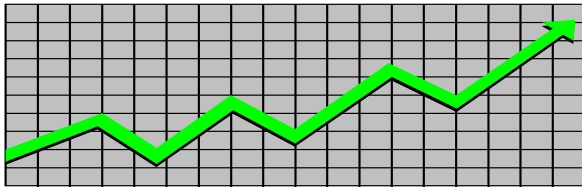


*State of New Jersey
Department of Human Services
Division of Family Development*

CURRENT PROGRAM STATISTICS



May 2010
Jeanette Page-Hawkins, Director

**DIVISION OF FAMILY DEVELOPMENT CURRENT PROGRAM STATISTICS
MAY 2010**

TABLE OF CONTENTS

HIGHLIGHTS:

WFNJ/TANF.....	ii
FOOD STAMP PROGRAM.....	ii
EMERGENCY ASSISTANCE.....	ii
GENERAL ASSISTANCE.....	iii
GA Emergency Assistance.....	iii
GA Program.....	iii
CHILD SUPPORT SERVICES.....	iii
WORK FIRST NEW JERSEY (WFNJ).....	iii
STATISTICS- BY STATE & COUNTY.....	1
Table 1: WFNJ/TANF Families & Persons (NJ Statewide) May 2008 to 2010.....	1
Table 2: WFNJ/TANF Families (by County)- May 2010.....	2
Table 2B: WFNJ/TANF Persons, Adults, & Children (by County)- May 2010.....	3
Table 3: TANF Work Participation Rates Over 12 Month Period (by County)- May 2010.....	4
Table 4: TANF Work Participation Rates Over 12 Month Period (NJ Statewide)- May 2010.....	5
Table 5: Food Stamp Program Households/Persons (NJ Statewide) May 2008 to 2010.....	6
Table 6: Food Stamp Recipient Trends (NJ Statewide) May 2008 to 2010.....	7
Table 7: Food Stamp Program Households/Persons (by County)- May 2010.....	8
Table 8: Emergency Assistance Program (NJ Statewide) May 2008 to 2010.....	9
Table 9: Emergency Assistance Program (by County)- May 2010.....	10
Table 10: General Assistance Program (NJ Statewide) May 2008 to 2010.....	11
Table 11: General Assistance Program (by County)- May 2010.....	12
Table 12: Child Support Services Distributions (NJ Statewide) FFY 2010.....	13
Table 13: Child Support Services Paternities Established- May 2010.....	14
Table 14: Child Support Services Cases With Orders- May 2010.....	15
Table 15: Child Support Services Collections On Current Support- May 2010.....	16
Table 16: Child Support Services Cases With Payments On Arrears- May 2010.....	17
Table 17: WFNJ Statistical Summary- May 2010.....	18
ACRONYMS.....	19
EXPLANATORY NOTES.....	19
WFNJ Statistical Summary (Table 17).....	20

**DIVISION OF FAMILY DEVELOPMENT CURRENT PROGRAM STATISTICS
MAY 2010**

Each month the Division of Family Development publishes its program statistics for: WFNJ/TANF, Food Stamps, Emergency Assistance, General Assistance (GA) and Child Support Services. When possible, information is provided separately for children and adults. Many tables also provide trend data with information broken down by county for readers to consider.

WFNJ/TANF

- At the end of May, the TANF caseload increased by 2,127 cases, from 36,589 in May 2009 to 38,716 in May 2010, a 5.8% increase.
- The counties with the highest family caseload percentage increase since May 2009 include Burlington (24.5%), Gloucester (16.2%), and Ocean (15.1%).
- The counties that decreased the most since May 2009 were Atlantic (-0.3%), Cumberland (-1.4%) and Salem (-4.3 %)
- Of the WFNJ/TANF families, 10,376 or 26.8% were child-only cases in May 2010
- The counties with the most child-only cases were Essex (1,713), Hudson (1,373), and Camden (1,190).
- Essex (21,012), Hudson (12,014), and Camden (10,343) counties have the greatest number of persons receiving TANF in May 2010.

FOOD STAMP PROGRAM

- In May 2010 there are 307,738 households receiving food stamps. Food Stamp households increased by 61,927, or 25.2%, since May 2009.
- There were 626,098 persons receiving food stamps as of May 2010, an increase of 123,781 or 24.6 % since May 2009.
- The three counties having the highest caseload increase since May 2009 are Ocean (38.7%), Middlesex (36.6%), and Sussex (30.5%)

EMERGENCY ASSISTANCE

- There were 5,842 families receiving emergency assistance (EA) in May 2010, an increase of 851 or 17.1% since May 2009.
- In May 2010, EA payments were made for 1,507 SSI recipients

**DIVISION OF FAMILY DEVELOPMENT CURRENT PROGRAM STATISTICS
MAY 2010**

GENERAL ASSISTANCE

GA Emergency Assistance

- There were 8,689 emergency assistance payments made to GA recipients in May 2010, an increase of 484 or 5.9% since May 2009.
- The three counties that show an annual percent increase in emergency assistance payments are Ocean (64.6%), Hunterdon (34.1%), and Cape May (30.5%).

GA Program

- The total numbers of persons for GA has increased from 47,344 to 53,246 since May 2009, an increase of 12.5%.
- There were 35,368 Employable GA and 17,878 Unemployable GA recipients in May 2010.
- Middlesex (53.1%), Ocean (37.3%), and Hudson (29.9%) counties showed the highest percent increase for GA persons since May 2009.

CHILD SUPPORT SERVICES (Quarterly Report)

- The total collection for the Child Support Services Program was about 315 million dollars from January 2009 to March 2010, an increase of 5.5 percent over the same period for FFY 2009.
- Total distributions increased over 3 percent from March 2009.

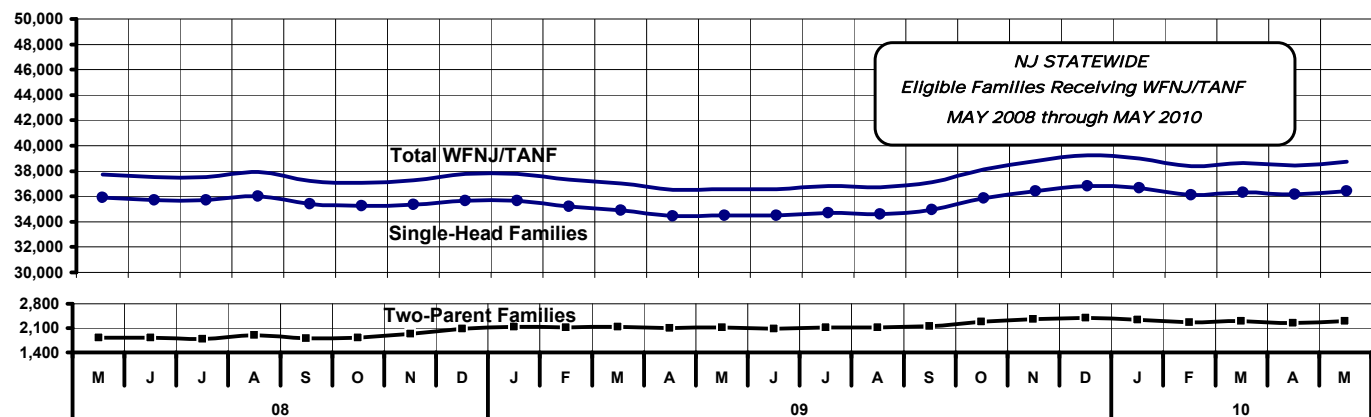
WORK FIRST NEW JERSEY (WFNJ)

- During the report month of May 2010, there were 3,820 families where at least one member is employed and an additional 525 families where WFNJ assistance cases were closed due to employment – related earnings.
- The three counties with the greatest number of employed active recipients were: Essex (952), Hudson (458), and Camden (322).
- There were 3,719 former TANF cases receiving post-TANF support in the form of child care assistance.

TABLE 1: WFNJ/TANF PROGRAM

STATEWIDE NUMBER OF APPLICATIONS AND TERMINATIONS DURING MAY 2010;
 NUMBER OF ELIGIBLE FAMILIES & PERSONS RECEIVING WFNJ/TANF FOR MAY 2010

MAY 2008 THROUGH MAY 2010												
		Cases Added	Cases Closed	Child-Only Cases ‡	Total Singl-Head Families	2- Parent Families	Total WFNJ/TANF Families	%CHNG (1 Yr.)	%CHNG			
									Total Persons	(1 Yr.)	Adults	Children
2008	MAY	3,484	3,443	10,033	35,916	1,824	37,740	(0.6)	94,999	(1.5)	29,531	65,468
	JUN	3,357	3,576	9,881	35,699	1,822	37,521	(3.2)	94,421	(2.4)	29,462	64,959
	JUL	3,457	3,463	9,716	35,720	1,795	37,515	(2.4)	94,427	(1.9)	29,594	64,833
	AUG	3,705	3,295	9,664	36,022	1,903	37,925	(1.8)	95,856	(1.1)	30,164	65,692
	SEP	3,323	4,035	9,593	35,416	1,797	37,213	(3.3)	93,901	(3.1)	29,417	64,484
	OCT	3,729	3,849	9,384	35,270	1,823	37,093	(4.2)	94,297	(3.1)	29,532	64,765
	NOV	3,848	3,654	9,435	35,347	1,940	37,287	(3.1)	94,960	(2.2)	29,792	65,168
	DEC	3,718	3,252	9,586	35,669	2,084	37,753	(2.2)	96,175	(1.3)	30,251	65,924
2008 AVERAGE		3,578	3,571	9,662	35,632	1,874	37,506		94,880		29,718	65,162
2009	JAN	3,436	3,414	9,633	35,643	2,132	37,775	(1.5)	96,244	(0.5)	30,244	66,000
	FEB	3,249	3,715	9,761	35,188	2,121	37,309	(1.1)	94,788	(0.3)	29,669	65,119
	MAR	3,257	3,532	9,963	34,903	2,131	37,034	(1.8)	93,762	(1.3)	29,202	64,560
	APR	3,231	3,748	9,908	34,422	2,095	36,517	(3.1)	92,401	(2.5)	28,704	63,697
	MAY	3,452	3,380	9,877	34,476	2,113	36,589	(3.0)	92,673	(2.4)	28,825	63,848
	JUN	3,429	3,429	9,800	34,512	2,077	36,589	(2.5)	92,422	(2.1)	28,866	63,556
	JUL	3,342	3,095	9,651	34,721	2,115	36,836	(1.8)	93,182	(1.3)	29,300	63,882
	AUG	3,859	3,957	9,643	34,614	2,124	36,738	(3.1)	92,919	(3.1)	29,219	63,700
	SEP	3,728	3,363	9,744	34,951	2,152	37,103	(0.3)	93,634	(0.3)	29,511	64,123
	OCT	4,233	3,211	9,719	35,842	2,283	38,125	2.8	96,667	2.5	30,689	65,978
	NOV	3,942	3,273	9,882	36,430	2,364	38,794	4.0	98,503	3.7	31,276	67,227
	DEC	3,457	3,018	10,038	36,838	2,395	39,233	3.9	99,453	3.4	31,590	67,863
2009 AVERAGE		3,551	3,428	9,802	35,212	2,175	37,387		94,721		29,758	64,963
2010	JAN	3,175	3,408	10,228	36,659	2,341	39,000	3.2	98,701	2.6	31,113	67,588
	FEB	2,784	3,386	10,335	36,123	2,275	38,398	2.9	96,930	2.3	30,338	66,592
	MAR	2,927	2,690	10,505	36,324	2,311	38,635	4.3	97,171	3.6	30,441	66,730
	APR	3,024	3,241	10,460	36,173	2,245	38,418	5.2	96,580	4.5	30,203	66,377
	MAY	3,391	3,093	10,376	36,405	2,311	38,716	5.8	97,692	5.4	30,651	67,041
2010 AVG to date		3,060	3,164	10,381	36,337	2,297	38,633		97,415		30,549	66,866



Data is derived from NJ MMIS Shared Data Warehouse.

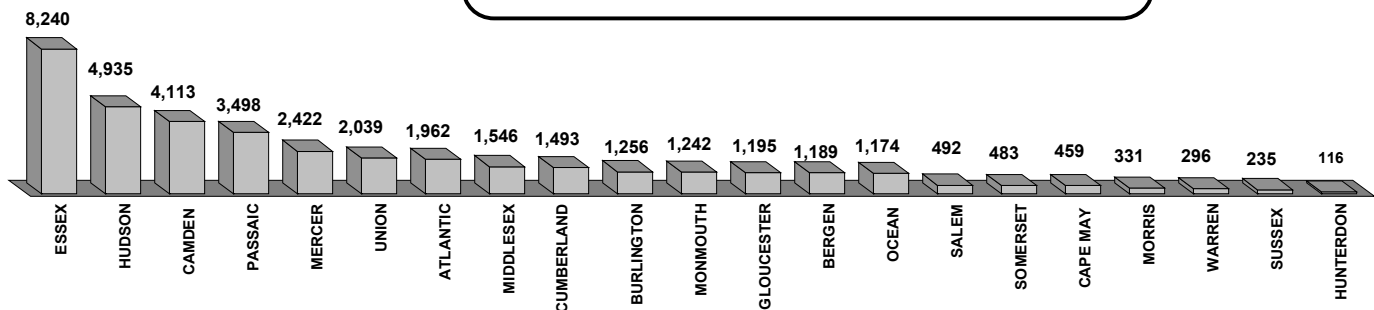
‡ Child-only cases are defined as families where no eligible adult receives TANF program benefits, yet the family continues to be headed by at least one of the biological parents, or grandparents, or other appropriate adult.

Table 2
WFNJ/TANF
PROGRAM

NUMBER OF APPLICATIONS AND TERMINATIONS BY COUNTY DURING MAY 2010, AND
NUMBER OF ELIGIBLE FAMILIES RECEIVING WFNJ/TANF REPORTED FOR MAY 2010

County	Cases Added	Cases Closed**	Child-		Total		Total WFNJ/TANF Families	% Chng (3 Mon)	% Chng (1 Yr)
			Only Cases ‡	1-Adult Cases	Singl-Head Families	2-Parent Families			
ATLANTIC	148	110	548	1,264	1,812	150	1,962	(0.9)	(0.3) *
BERGEN	110	77	275	801	1,076	113	1,189	1.4	7.8
BURLINGTON	138	135	358	807	1,165	91	1,256	(0.2)	24.5 Δ
CAMDEN	286	279	1,190	2,727	3,917	196	4,113	0.5	6.3
CAPE MAY	25	50	120	298	418	41	459	(6.7)	2.0
CUMBERLAND	152	148	553	838	1,391	102	1,493	(0.8)	(1.4) *
ESSEX	827	753	1,713	6,108	7,821	419	8,240	(1.2)	5.2
GLOUCESTER	99	110	259	846	1,105	90	1,195	0.3	16.2 Δ
HUDSON	386	407	1,373	3,303	4,676	259	4,935	(1.2)	1.0
HUNTERDON	19	16	16	85	101	15	116	5.5	14.9
MERCER	192	168	651	1,630	2,281	141	2,422	2.1	6.0
MIDDLESEX	132	130	623	861	1,484	62	1,546	(3.3)	3.5
MONMOUTH	102	91	363	837	1,200	42	1,242	0.3	5.7
MORRIS	37	33	108	187	295	36	331	2.5	7.8
OCEAN	93	96	367	702	1,069	105	1,174	(0.3)	15.1 Δ
PASSAIC	278	160	860	2,453	3,313	185	3,498	6.0	12.0
SALEM	59	64	127	323	450	42	492	(0.6)	(4.3) *
SOMERSET	35	41	156	294	450	33	483	(2.4)	11.8
SUSSEX	36	35	47	167	214	21	235	7.3	10.8
UNION	193	167	600	1,310	1,910	129	2,039	1.6	2.2
WARREN	44	23	69	188	257	39	296	10.9	6.5
NJ TOTAL	3,391	3,093	10,376	26,029	36,405	2,311	38,716	0.2	5.8

Total WFNJ/TANF Families
MAY 2010
By County



Data is derived from NJ MMIS Shared Data Warehouse.

‡ Child-only cases are defined as families where no eligible adult receives TANF program benefits, yet the family continues to be headed by at least one of the biological parents, or grandparents, or other appropriate adult

** "Cases closed" include cases that received a benefit in the prior month, but did not receive any TANF benefit for the report month.

Δ=higher caseload % change

*=lower caseload % change

Table 2B

NUMBER OF PARTICIPATING PERSONS, ADULTS, AND CHILDREN
BY COUNTY FOR MAY 2010

WFNJ/TANF

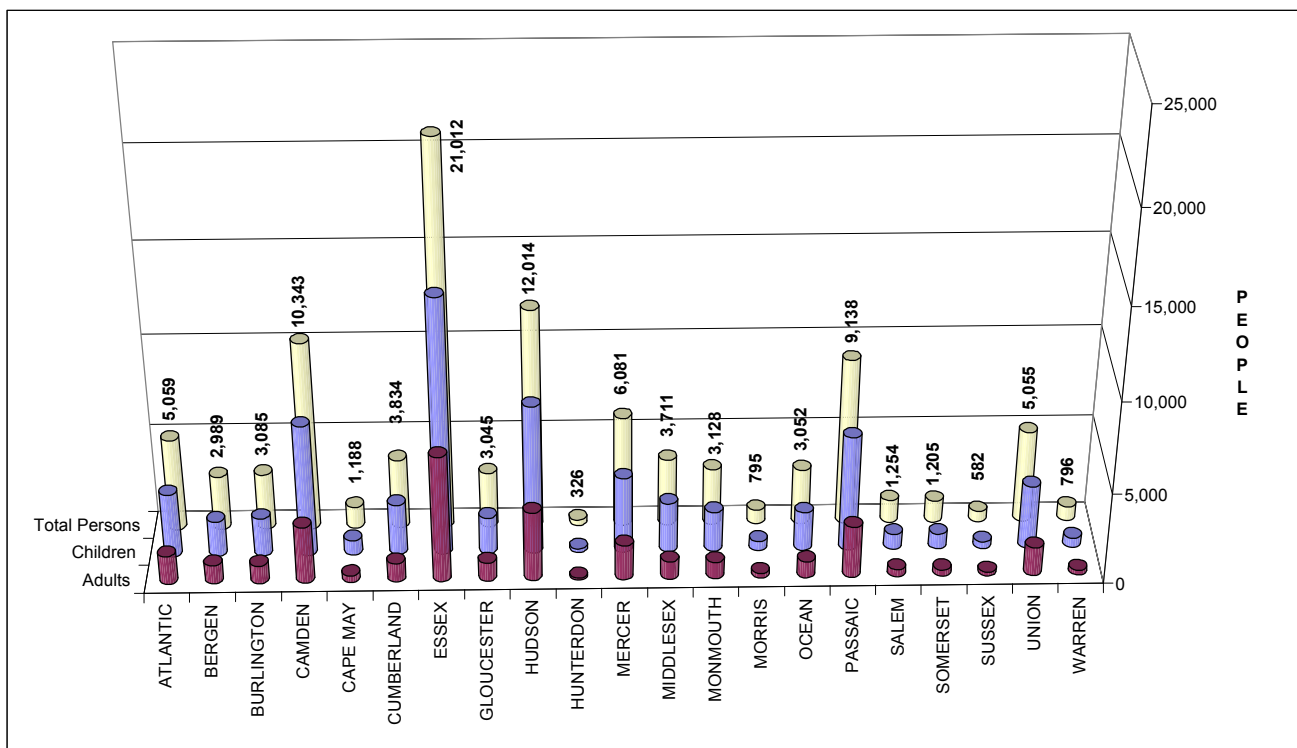
PROGRAM

Δ= ↑ Caseload %

*= ↓ Caseload %

PERSONS

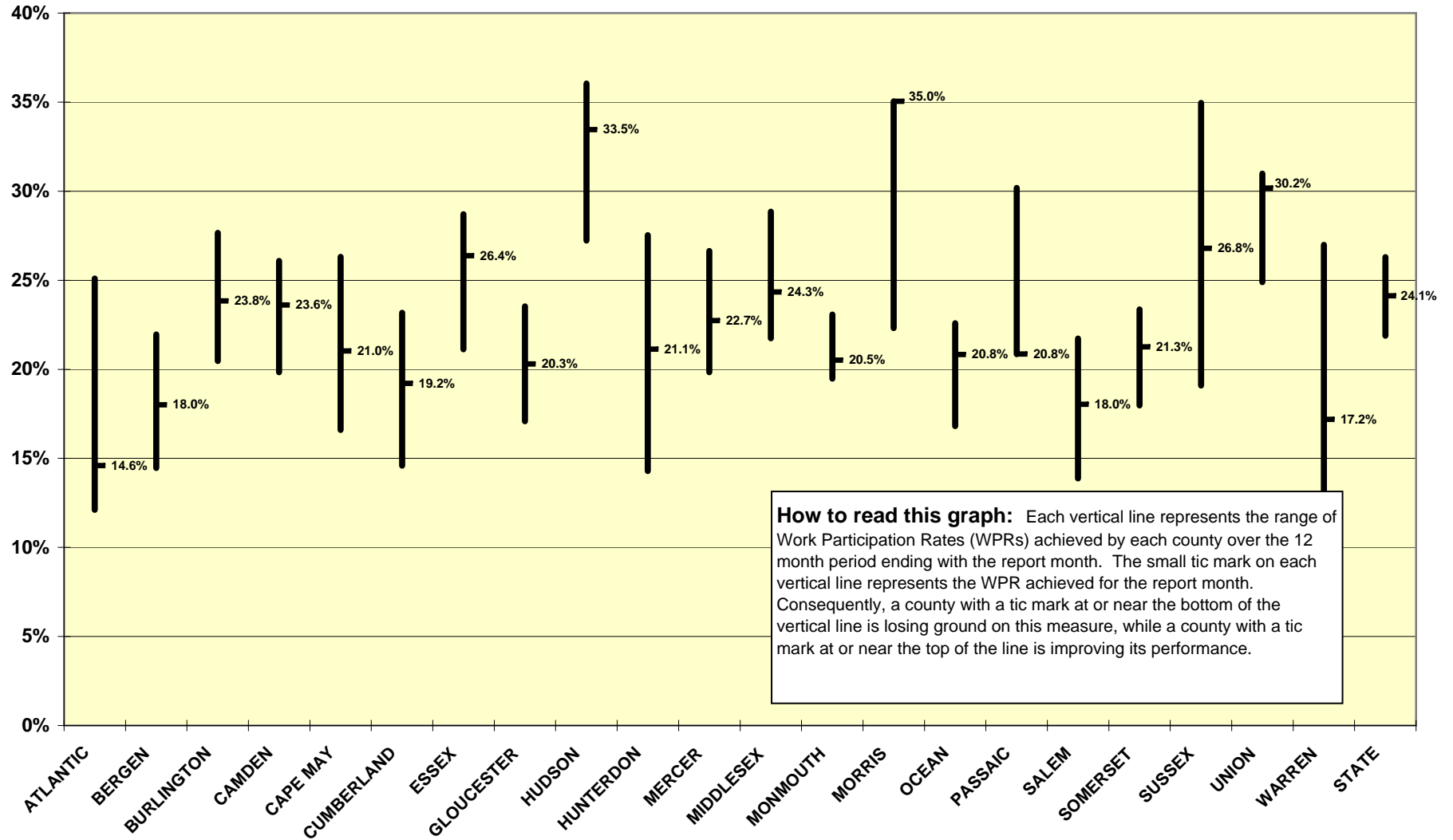
County	Adults	Children	Child/Adult Ratio	Total Persons	% Chng (1 Yr)	Persons Per Case
ATLANTIC	1,564	3,495	2.23	5,059	(1.8) *	2.58
BERGEN	1,027	1,962	1.91	2,989	10.8	2.51
BURLINGTON	989	2,096	2.12	3,085	23.3 Δ	2.46
CAMDEN	3,119	7,224	2.32	10,343	6.1	2.51
CAPE MAY	380	808	2.13	1,188	(0.3)	2.59
CUMBERLAND	1,042	2,792	2.68	3,834	(1.8) *	2.57
ESSEX	6,946	14,066	2.03	21,012	5.0	2.55
GLOUCESTER	1,026	2,019	1.97	3,045	16.0	2.55
HUDSON	3,821	8,193	2.14	12,014	0.6	2.43
HUNTERDON	115	211	1.83	326	24.0 Δ	2.81
MERCER	1,912	4,169	2.18	6,081	5.5	2.51
MIDDLESEX	985	2,726	2.77	3,711	2.4	2.40
MONMOUTH	921	2,207	2.40	3,128	3.5	2.52
MORRIS	259	536	2.07	795	0.6	2.40
OCEAN	912	2,140	2.35	3,052	18.6 Δ	2.60
PASSAIC	2,823	6,315	2.24	9,138	12.3	2.61
SALEM	407	847	2.08	1,254	(4.2) *	2.55
SOMERSET	360	845	2.35	1,205	9.0	2.49
SUSSEX	209	373	1.78	582	8.2	2.48
UNION	1,568	3,487	2.22	5,055	0.9	2.48
WARREN	266	530	1.99	796	4.3	2.69
NJ TOTAL	30,651	67,041	2.19	97,692	5.4	2.52



Data is derived from NJ MMIS Shared Data Warehouse.

TABLE 3

**Work Participation Rates Achieved Over 12 Month Period
Ending With MAY 2010**



How to read this graph: Each vertical line represents the range of Work Participation Rates (WPRs) achieved by each county over the 12 month period ending with the report month. The small tic mark on each vertical line represents the WPR achieved for the report month. Consequently, a county with a tic mark at or near the bottom of the vertical line is losing ground on this measure, while a county with a tic mark at or near the top of the line is improving its performance.

TABLE 4

**WFNJ/TANF Work Participation Rates
for 12-Month Period Ending with MAY 2010
Statewide**

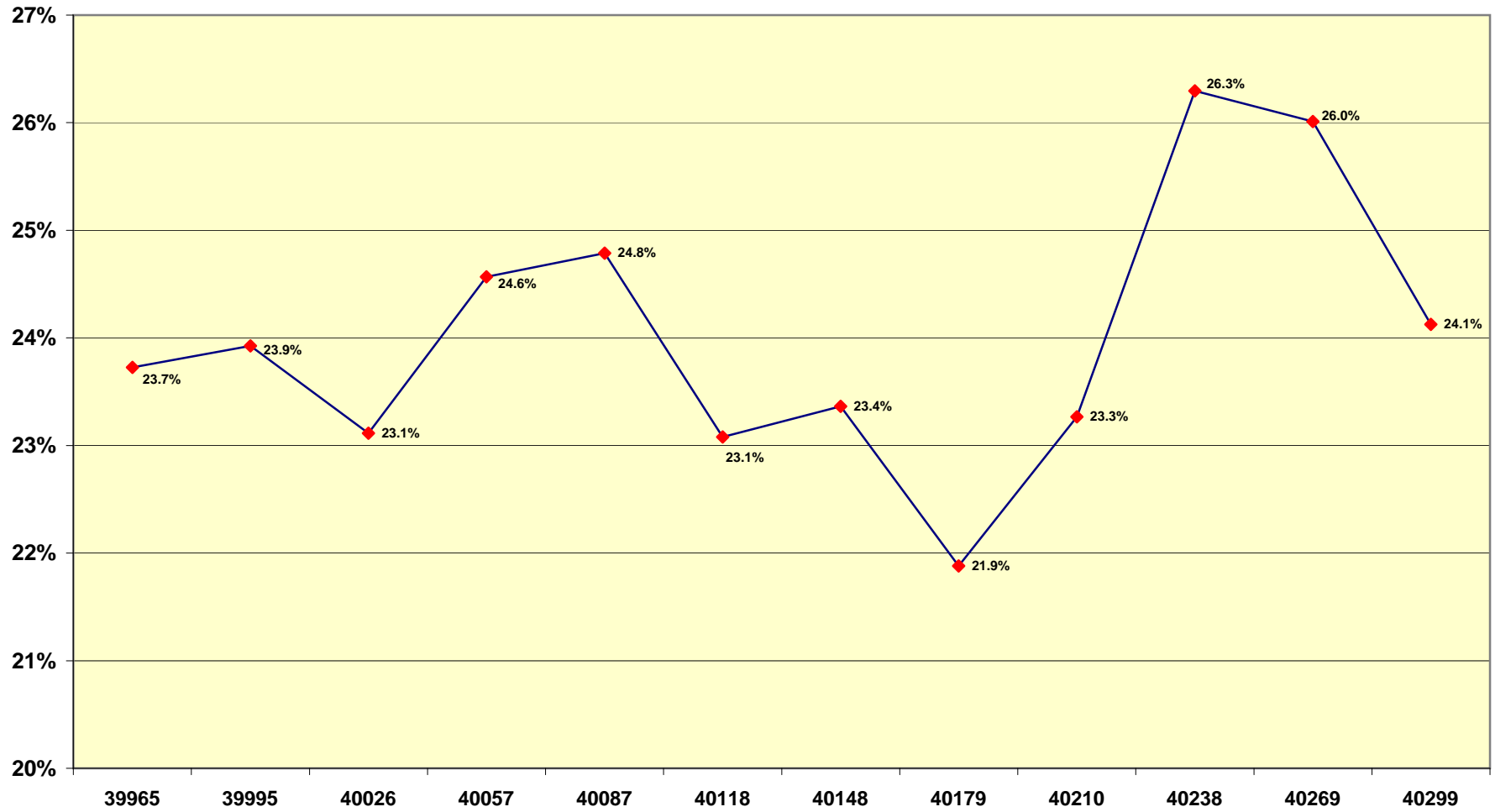


Table 5
FOOD STAMP
PROGRAM

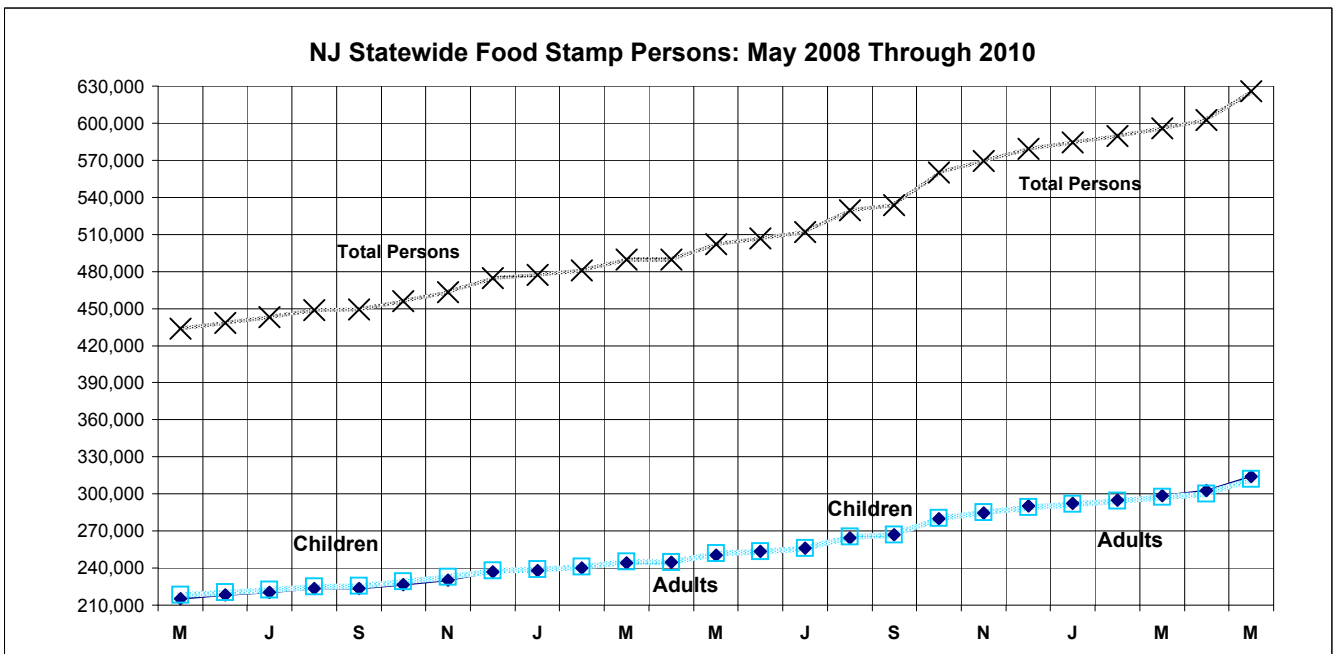
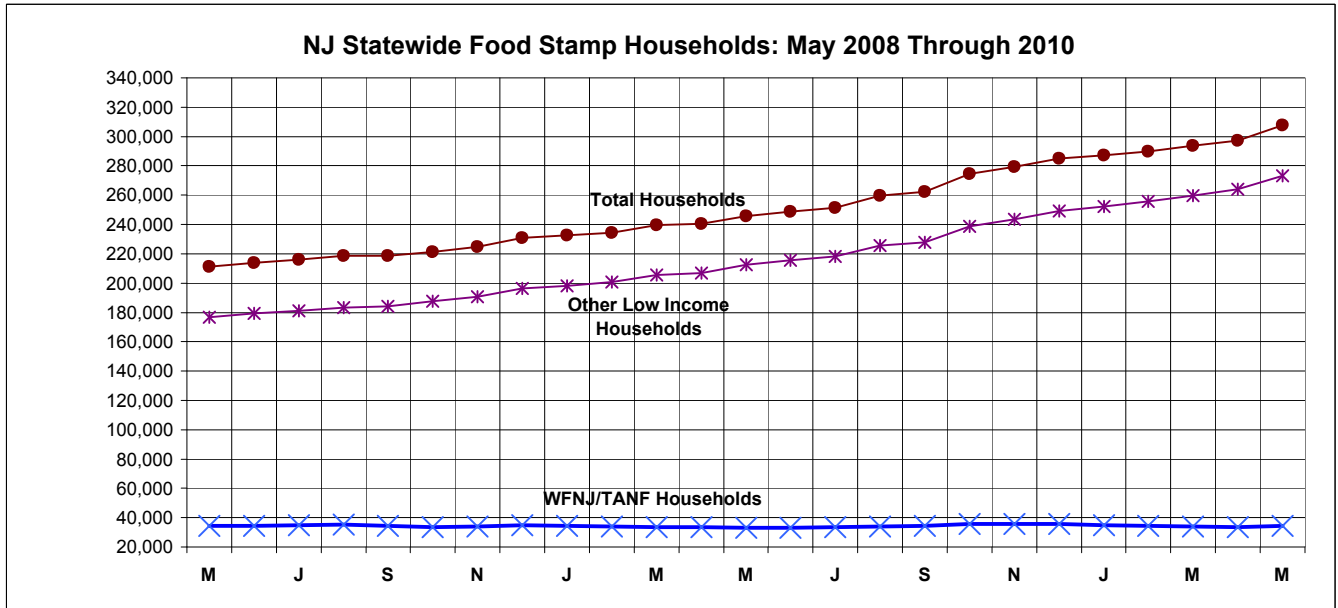
**NUMBER OF PARTICIPATING HOUSEHOLDS, PERSONS, ADULTS
AND CHILDREN FOR MAY 2010 (STATEWIDE)**

MAY 2008 THROUGH MAY 2010

		HOUSEHOLDS				PERSONS			
		WFNJ/ TANF	Other low income	TOTAL	% CHNG (1 Yr.)	Adults	Children	TOTAL	% CHNG (1 Yr.)
2008	MAY	34,563	176,840	211,403	5.5%	215,426	218,058	433,484	5.2%
	JUN	34,579	179,354	213,933	6.2%	218,236	220,325	438,561	5.7%
	JUL	35,061	180,889	215,950	7.0%	220,464	222,376	442,840	6.2%
	AUG	35,222	183,313	218,535	8.1%	223,468	225,195	448,663	7.5%
	SEP	34,468	184,229	218,697	8.1%	223,461	225,638	449,099	7.5%
	OCT	33,710	187,758	221,468	8.8%	226,814	229,196	456,010	8.5%
	NOV	33,927	190,913	224,840	11.8%	230,439	232,556	462,995	11.5%
	DEC	34,649	196,287	230,936	12.8%	236,701	238,148	474,849	12.3%
2008 AVERAGE		34,522	184,948	219,470		224,376	226,437	450,813	
2009	JAN	34,395	198,019	232,414	12.8%	237,816	239,202	477,018	12.2%
	FEB	33,755	200,808	234,563	15.3%	239,844	240,879	480,723	14.9%
	MAR	33,746	205,701	239,447	15.5%	244,291	245,228	489,519	14.9%
	APR	33,416	206,939	240,355	14.8%	244,875	244,931	489,806	14.1%
	MAY	33,284	212,527	245,811	16.3%	250,580	251,737	502,317	15.9%
	JUN	33,122	215,589	248,711	16.3%	253,318	253,684	507,002	15.6%
	JUL	33,544	217,984	251,528	16.5%	256,028	256,002	512,030	15.6%
	AUG	33,887	225,661	259,548	18.8%	264,251	265,227	529,478	18.0%
	SEP	34,352	228,021	262,373	20.0%	267,071	266,771	533,842	18.9%
	OCT	35,665	238,792	274,457	23.9%	279,691	280,347	560,038	22.8%
	NOV	35,741	243,568	279,309	24.2%	284,511	284,930	569,441	23.0%
	DEC	35,548	349,329	284,877	23.4%	290,251	289,056	579,307	22.0%
2009 AVERAGE		34,205	228,578	254,449		259,377	259,833	519,210	
2010	JAN	34,895	252,224	287,119	23.5%	292,314	291,880	584,194	22.5%
	FEB	34,377	255,624	290,001	23.6%	295,116	294,430	589,546	22.6%
	MAR	34,054	259,820	293,874	22.7%	298,683	297,304	595,987	21.7%
	APR	33,483	263,828	297,311	23.7%	302,558	300,046	602,604	23.0%
	MAY	34,487	273,251	307,738	25.2%	314,097	312,001	626,098	24.6%
2010 AVG to date		34,259	260,949	295,209		300,554	299,132	599,686	

Data is derived from NJ MMIS Shared Data Warehouse.

**TABLE 6: FOOD STAMP PROGRAM
TRENDS FOR PARTICIPATING HOUSEHOLDS & PERSONS
MAY 2008 THROUGH MAY 2010 (STATEWIDE)**



Data is derived from NJ MMIS Shared Data Warehouse.

Table 7 **NUMBER OF PARTICIPATING HOUSEHOLDS, PERSONS, ADULTS AND CHILDREN BY COUNTY FOR MAY 2010**

FOOD STAMP PROGRAM

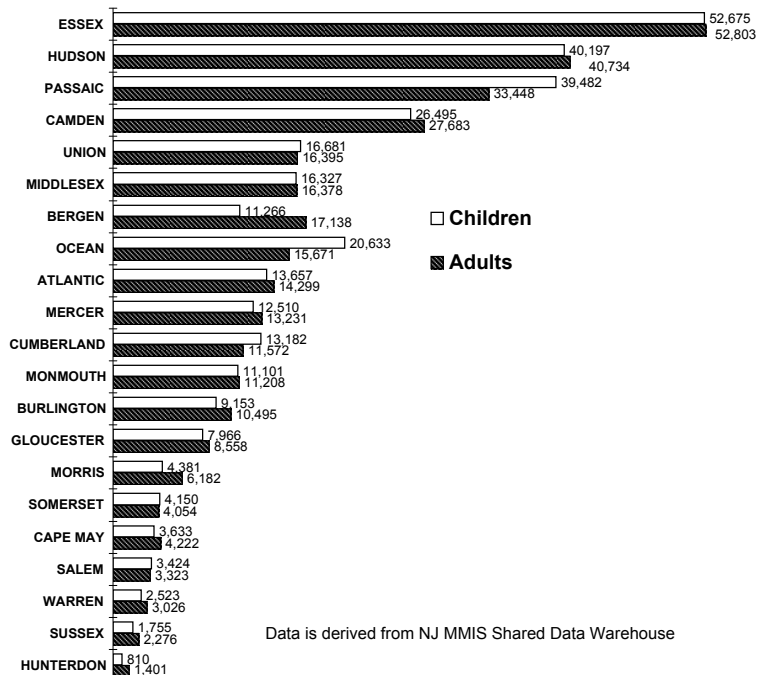
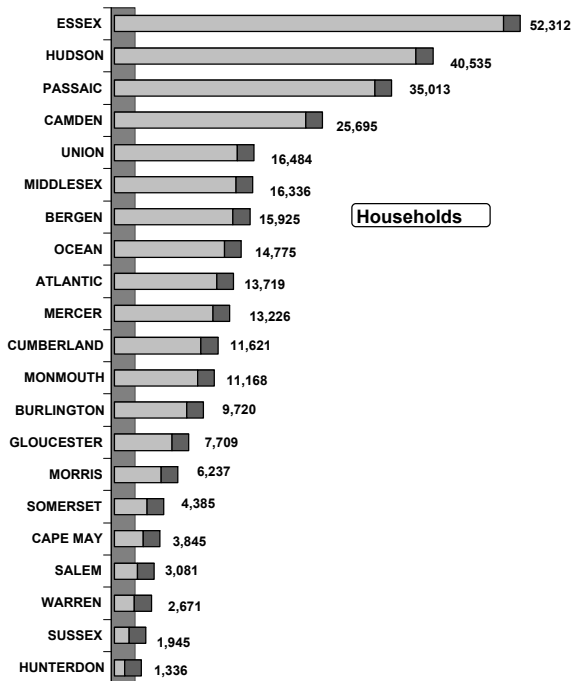
PROGRAM

Δ= ↑ Caseload %

*= ↓ Caseload %

County	HOUSEHOLDS				PERSONS			
	WFNJ/ TANF	Other low income	TOTAL	% Chng (1 Yr)	Adults	Children	TOTAL	% Chng (1 Yr)
ATLANTIC	1,702	12,017	13,719	25.1	14,299	13,657	27,956	24.8
BERGEN	1,072	14,853	15,925	22.9	17,138	11,266	28,404	25.9
BURLINGTON	1,081	8,639	9,720	24.3	10,495	9,153	19,648	24.1
CAMDEN	3,653	22,042	25,695	20.3 *	27,683	26,495	54,178	18.5 *
CAPE MAY	421	3,424	3,845	15.7 *	4,222	3,633	7,855	19.6 *
CUMBERLAND	1,286	10,335	11,621	24.8	11,572	13,182	24,754	21.8
ESSEX	7,704	44,608	52,312	23.2	52,803	52,675	105,478	20.8
GLOUCESTER	1,035	6,674	7,709	22.0	8,558	7,966	16,524	23.8
HUDSON	4,383	36,152	40,535	27.7	40,734	40,197	80,931	25.8
HUNTERDON	108	1,228	1,336	30.1	1,401	810	2,211	33.4 Δ
MERCER	2,134	11,092	13,226	24.2	13,231	12,510	25,741	23.4
MIDDLESEX	1,377	14,959	16,336	36.6 Δ	16,378	16,327	32,705	39.0 Δ
MONMOUTH	1,106	10,062	11,168	25.2	11,208	11,101	22,309	25.4
MORRIS	283	5,954	6,237	30.0	6,182	4,381	10,563	31.9
OCEAN	1,022	13,753	14,775	38.7 Δ	15,671	20,633	36,304	38.2 Δ
PASSAIC	3,157	31,856	35,013	20.4	33,448	39,482	72,930	20.5
SALEM	429	2,652	3,081	20.2 *	3,323	3,424	6,747	19.4 *
SOMERSET	406	3,979	4,385	22.6	4,054	4,150	8,204	23.2
SUSSEX	195	1,750	1,945	30.5 Δ	2,276	1,755	4,031	33.4
UNION	1,685	14,799	16,484	29.6	16,395	16,681	33,076	29.7
WARREN	248	2,423	2,671	25.4	3,026	2,523	5,549	25.2
NJ TOTAL	34,487	273,251	307,738	25.2	314,097	312,001	626,098	24.6

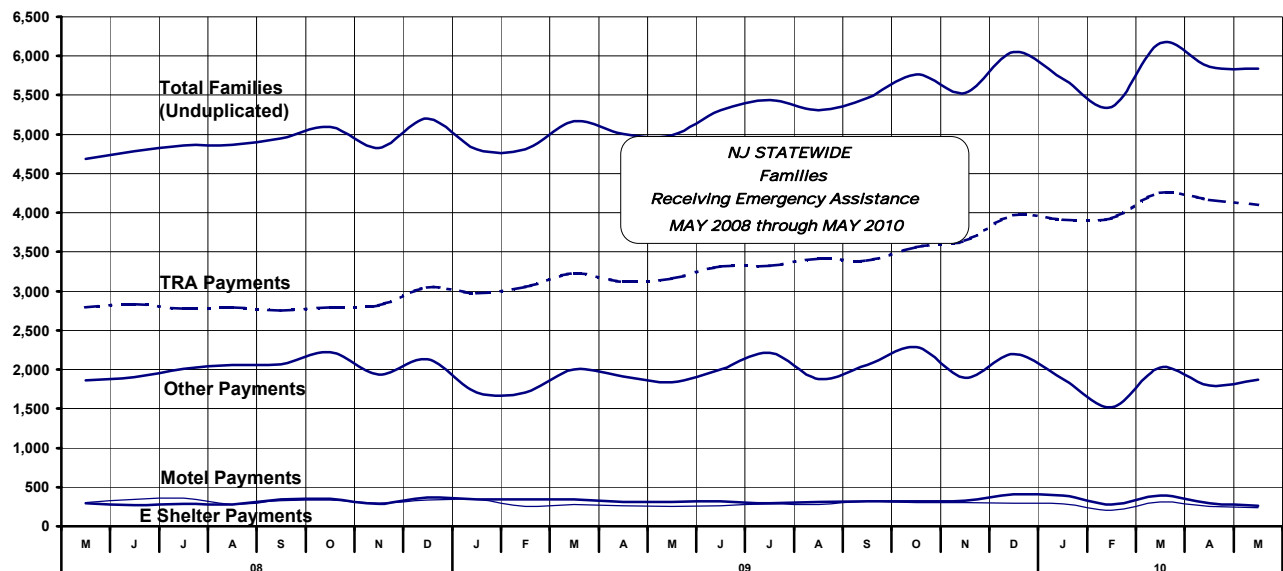
Total Food Stamp Recipients
MAY 2010 By County



Data is derived from NJ MMIS Shared Data Warehouse

Table 8 TOTAL NUMBER OF ELIGIBLE FAMILIES RECEIVING EMERGENCY ASSISTANCE PAYMENTS
EMERGENCY ASSISTANCE MAY 2008 THROUGH MAY 2010 - STATEWIDE

	TOTAL WFNJ/EA		Temp Rent Asst.		Motel Housing		Emergency Shelter		Other EA	
	Families (Undupl)	% CHNG (1 YR)	Payments (Undupl)	% CHNG (1 YR)	Payments (Undupl)	% CHNG (1 YR)	Payments (Undupl)	% CHNG (1 YR)	Payments (Undupl)	% CHNG (1 YR)
2008										
MAY	4,686	-2.8%	2,796	1.1%	297	-9.7%	303	-15.1%	1,859	0.7%
JUN	4,789	0.9%	2,834	5.0%	270	-7.5%	341	-7.3%	1,905	2.4%
JUL	4,857	2.6%	2,779	2.0%	289	-1.4%	356	7.9%	2,008	5.1%
AUG	4,869	0.2%	2,791	2.0%	281	-21.5%	274	-17.0%	2,056	2.8%
SEP	4,946	2.7%	2,750	1.1%	340	-4.8%	330	-11.8%	2,066	9.5%
OCT	5,094	0.1%	2,794	-0.1%	351	-0.6%	332	-11.2%	2,223	1.0%
NOV	4,824	2.0%	2,821	2.0%	288	-12.2%	294	-16.2%	1,938	3.4%
DEC	5,205	7.6%	3,044	7.8%	369	21.8%	337	-6.4%	2,129	12.5%
2008 AVERAGE	4,909		2,826		311		321		2,023	
2009										
JAN	4,808	-1.0%	2,969	3.1%	342	-3.7%	340	-5.8%	1,706	-7.6%
FEB	4,813	6.4%	3,056	8.0%	342	35.2%	254	-10.9%	1,710	2.1%
MAR	5,170	9.7%	3,224	12.7%	342	2.1%	274	-11.0%	2,003	14.5%
APR	5,009	3.4%	3,123	10.7%	312	-1.0%	258	-24.6%	1,908	0.6%
MAY	4,991	6.5%	3,164	13.2%	313	5.4%	251	-17.2%	1,839	-1.1%
JUN	5,308	10.8%	3,315	17.0%	317	17.4%	258	-24.3%	2,004	5.2%
JUL	5,435	11.9%	3,320	19.5%	293	1.4%	288	-19.1%	2,211	10.1%
AUG	5,307	9.0%	3,417	22.4%	313	11.4%	280	2.2%	1,881	-8.5%
SEP	5,462	10.4%	3,392	23.3%	320	-5.9%	316	-4.2%	2,058	-0.4%
OCT	5,764	13.2%	3,563	27.5%	319	-9.1%	304	-8.4%	2,286	2.8%
NOV	5,528	14.6%	3,641	29.1%	326	13.2%	305	3.7%	1,894	-2.3%
DEC	6,048	16.2%	3,967	30.3%	411	11.4%	296	-12.2%	2,198	3.2%
2009 AVERAGE	5,304		3,346		329		285		1,975	
2010										
JAN	5,708	18.7%	3,914	31.8%	395	15.5%	282	-17.1%	1,881	10.3%
FEB	5,351	11.2%	3,930	28.6%	275	-19.6%	203	-20.1%	1,516	-11.3%
MAR	6,162	19.2%	4,254	31.9%	391	14.3%	310	13.1%	2,025	1.1%
APR	5,860	17.0%	4,164	33.3%	293	-6.1%	251	-2.7%	1,795	-5.9%
MAY	5,842	17.1%	4,098	29.5%	259	-17.3%	240	-4.4%	1,867	1.5%
2010 AVG to date	5,785		4,072		323		257		1,817	



WFNJ/EA data is derived from NJ MMIS Shared Data Warehouse.

Table 9 NUMBER OF TOTAL ELIGIBLE FAMILIES RECEIVING EMERGENCY ASSISTANCE PAYMENTS BY COUNTY (UNDUPLICATED CASES) MAY 2010

County	EMERGENCY ASSISTANCE		Temp Rent Asst. Payments (Undupl)	Motel Housing Payments (Undupl)	Emergency Shelter Payments (Undupl)	Other WFNJ/EA Payments (Undupl)	SSI Recipients Receiving EA**
	TOTAL WFNJ/EA Families (Undupl)	% CHNG From May 09					
ATLANTIC	336	-12.7% *	295	18	6	62	41
BERGEN	309	17.0%	239	2	0	98	204
BURLINGTON	227	14.1%	103	29	0	121	122
CAMDEN	305	4.8%	201	19	27	101	49
CAPE MAY	129	-8.5% *	75	51	0	13	82
CUMBERLAND	59	34.1%	34	0	8	20	12
ESSEX	1,657	25.1%	1,266	0	84	476	211
GLOUCESTER	162	1.3%	132	5	16	34	30
HUDSON	389	-7.8%	302	4	3	98	19
HUNTERDON	49	28.9%	40	4	1	11	21
MERCER	510	-1.2%	310	9	0	236	244
MIDDLESEX	205	38.5%	120	19	19	77	69
MONMOUTH	96	12.9%	17	31	0	57	11
MORRIS	65	71.1% Δ	54	0	3	11	10
OCEAN	225	64.2% Δ	173	42	1	42	79
PASSAIC	480	66.1% Δ	246	4	31	255	164
SALEM	48	-12.7% *	40	2	1	9	4
SOMERSET	149	50.5%	111	13	5	40	60
SUSSEX	91	18.2%	68	3	1	29	36
UNION	284	26.8%	217	0	31	64	37
WARREN	67	24.1%	55	4	3	13	2
NJ TOTAL	5,842	17.1%	4,098	259	240	1,867	1,507

Δ = ↑ Caseload %

* = ↓ Caseload %

**SSI-EA includes pay code 24 and is derived from NJ Division of Family Development FAMIS Report #FM430-03A

WFNJ/EA data is derived from NJ MMIS Shared Data Warehouse.

Number WFNJ Families Receiving EA by County
MAY 2010

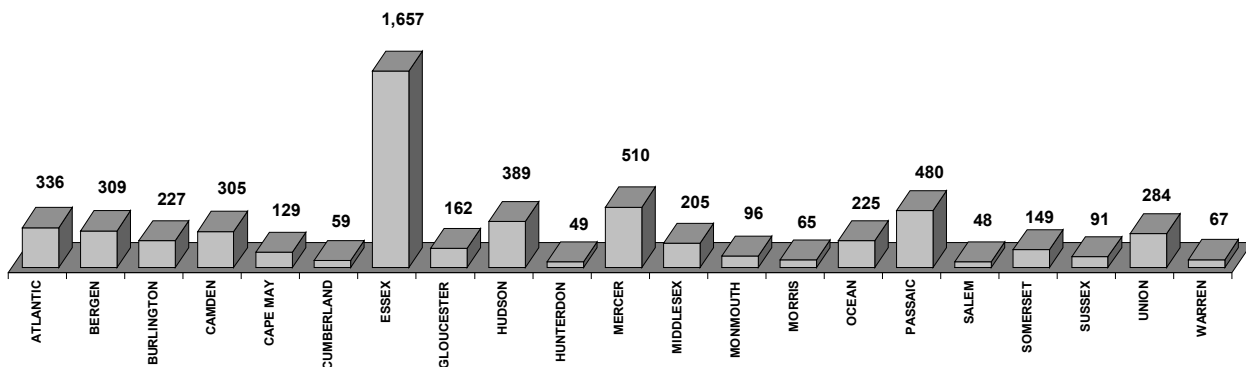
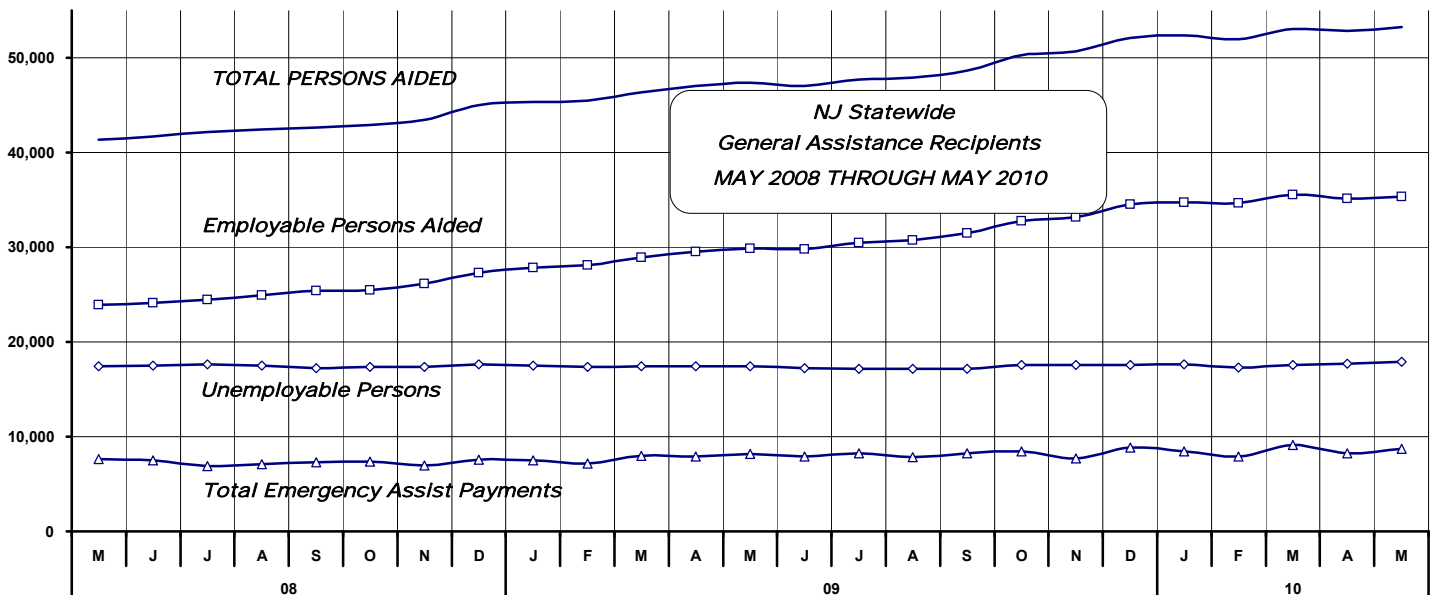


Table 10
GENERAL
ASSISTANCE
PROGRAM

NUMBER OF EMPLOYABLE AND UNEMPLOYABLE RECIPIENTS
AND EMERGENCY ASSISTANCE PAYMENTS FOR MAY 2010 - STATEWIDE

MAY 2008 THROUGH MAY 2010

	All Cases Aided						Emergency Assistance Payments			
	Employable	% Chng (1 Yr)	Unemployable	% Chng (1 Yr)	Total	% Chng (1 Yr)	Temporary Rental Assistance	Other GA-EA	Total	% Chng (1 Yr)
2008 MAY	23,929	7.2%	17,405	11.7%	41,334	9.0%	3,180	4,445	7,625	7.4%
JUN	24,148	10.4%	17,525	9.6%	41,673	10.1%	3,155	4,361	7,516	8.1%
JUL	24,478	12.8%	17,658	9.4%	42,136	11.4%	3,034	3,874	6,908	1.4%
AUG	24,942	12.6%	17,506	7.6%	42,448	10.5%	3,047	4,023	7,070	1.9%
SEP	25,387	16.3%	17,232	5.5%	42,619	11.7%	3,052	4,214	7,266	10.7%
OCT	25,502	15.7%	17,389	5.6%	42,891	11.4%	3,230	4,143	7,373	7.1%
NOV	26,120	19.1%	17,346	6.0%	43,466	13.5%	3,284	3,709	6,993	10.7%
DEC	27,331	22.2%	17,645	6.9%	44,976	15.7%	3,400	4,138	7,538	8.3%
2008 AVERAGE	25,230		17,463		42,693		3,173	4,113	7,286	
2009 JAN	27,853	22.7%	17,471	4.4%	45,324	14.9%	3,461	4,069	7,530	7.5%
FEB	28,124	22.5%	17,354	4.8%	45,478	15.1%	3,545	3,595	7,140	5.3%
MAR	28,936	25.0%	17,438	3.8%	46,374	16.1%	3,823	4,181	8,004	12.7%
APR	29,555	24.6%	17,448	2.0%	47,003	15.1%	3,846	4,085	7,931	6.3%
MAY	29,878	24.9%	17,466	0.4%	47,344	14.5%	3,863	4,342	8,205	7.6%
JUN	29,808	23.4%	17,221	-1.7%	47,029	12.9%	3,817	4,120	7,937	5.6%
JUL	30,504	24.6%	17,192	-2.6%	47,696	13.2%	3,981	4,296	8,277	19.8%
AUG	30,741	23.2%	17,177	-1.9%	47,918	12.9%	3,937	3,872	7,809	10.5%
SEP	31,485	24.0%	17,162	-0.4%	48,647	14.1%	4,013	4,219	8,232	13.3%
OCT	32,740	28.4%	17,538	0.9%	50,278	17.2%	4,093	4,333	8,426	14.3%
NOV	33,154	26.9%	17,539	1.1%	50,693	16.6%	3,921	3,750	7,671	9.7%
DEC	34,506	26.3%	17,571	-0.4%	52,077	15.8%	4,160	4,672	8,832	17.2%
2009 AVERAGE	30,607		17,381		47,988		3,872	4,128	8,000	
2010 JAN	34,714	24.6%	17,631	0.9%	52,345	15.5%	4,197	4,218	8,415	11.8%
FEB	34,659	23.2%	17,312	-0.2%	51,971	14.3%	4,155	3,755	7,910	10.8%
MAR	35,534	22.8%	17,537	0.6%	53,071	14.4%	4,280	4,845	9,125	14.0%
APR	35,109	18.8%	17,698	1.4%	52,807	12.3%	4,253	3,996	8,249	4.0%
MAY	35,368	18.4%	17,878	2.4%	53,246	12.5%	4,242	4,447	8,689	5.9%
2010 AVG to date	35,077		17,611		52,688		4,225	4,252	8,478	



Source: NJ Division of Family Development, GA Fiscal Unit

TABLE 11

GENERAL
ASSISTANCE
PROGRAMEMPLOYABLE AND UNEMPLOYABLE RECIPIENTS
AND EMERGENCY ASSISTANCE PAYMENTS BY COUNTY

MAY 2010

County	Total Cases Aided						Emergency Assistance Payments			
	Employable	% Chng (From May 09)	Unemployable	% Chng (From May 09)	Total	% Chng (From May 09)	Temporary Rental Assist.	Other GA-EA	Total	% Chng (From May 09)
ATLANTIC	1,850	-4.5%	991	-20.9%	2,841	-10.9% *	277	51	328	-27.4% *
BERGEN	922	22.3%	693	0.7%	1,615	12.0%	404	109	513	26.4%
BURLINGTON	1,332	24.5%	766	3.0%	2,098	15.7%	108	309	417	-3.0%
CAMDEN	3,627	15.7%	2,516	4.5%	6,143	10.8%	377	303	680	-4.9%
CAPE MAY	758	12.3%	186	-8.8%	944	7.4%	193	316	509	30.5% Δ
CUMBERLAND	1,845	33.0%	711	-4.8%	2,556	19.8%	19	48	67	-52.5% *
ESSEX	9,007	10.4%	2,156	6.9%	11,163	9.7%	992	912	1,904	6.0%
GLOUCESTER	1,013	41.7%	553	5.1%	1,566	26.2%	107	136	243	-10.0%
HUDSON	3,220	51.0%	1,919	5.3%	5,139	29.9% Δ	160	111	271	19.9%
HUNTERDON	214	7.0%	211	31.1%	425	17.7%	138	110	248	34.1% Δ
MERCER	1,874	11.8%	1,084	4.6%	2,958	9.1%	291	330	621	5.8%
MIDDLESEX	908	131.0%	658	4.4%	1,566	53.1% Δ	169	150	319	-3.6%
MONMOUTH	710	13.4%	547	-4.0%	1,257	5.1%	44	192	236	-7.1%
MORRIS	557	27.5%	479	10.1%	1,036	18.8%	205	86	291	4.7%
OCEAN	1,554	58.7%	1,010	13.6%	2,564	37.3% Δ	238	246	484	64.6% Δ
PASSAIC	3,170	5.5%	1,357	-2.2%	4,527	3.1%	21	547	568	15.7%
SALEM	399	9.6%	208	-11.5%	607	1.3% *	43	72	115	-3.4%
SOMERSET	306	3.4%	256	0.8%	562	2.2%	82	63	145	-3.3%
SUSSEX	203	-4.2%	170	6.9%	373	0.5% *	62	70	132	-13.7% *
UNION	1,585	5.5%	1,224	11.3%	2,809	8.0%	258	223	481	10.8%
WARREN	314	42.1%	183	-9.4%	497	17.5%	54	63	117	14.7%
NJ TOTAL	35,368	18.4%	17,878	2.4%	53,246	12.5%	4,242	4,447	8,689	5.9%

Δ= ↑ Caseload %

* = ↓ Caseload %

Source: NJ Division of Family Development, GA Fiscal Unit

TABLE 12

OFFICE OF CHILD
SUPPORT SERVICES

OFFICE OF CHILD SUPPORT SERVICES

State Summary

TITLE IV-D SOURCE COLLECTION REPORT

Comparison of Quarter-2 (FFY 09 vs. FFY 10)

COLLECTION SOURCE	TOTAL 1/1/2009 - 3/31/2009	% OF TOTAL COLL	TOTAL 1/1/2010 - 3/31/2010	% OF TOTAL COLL	DOLLAR CHANGE	% CHANGE
FEDERAL TAX	\$ 16,209,440	5.45%	\$ 21,423,381	6.82%	\$ 5,213,941	32.17%
STATE TAX	\$ 136,321	0.05%	\$ 210,956	0.07%	\$ 74,635	54.75%
UIB	\$ 26,290,231	8.83%	\$ 37,148,816	11.83%	\$ 10,858,585	41.30%
INC WITHHOLD	\$ 180,845,802	60.77%	\$ 187,783,562	59.79%	\$ 6,937,760	3.84%
FROM OTHER STATES	\$ 12,807,016	4.30%	\$ 12,204,821	3.89%	\$ (602,195)	-4.70%
OTHER	\$ 61,294,815	20.60%	\$ 55,305,641	17.61%	\$ (5,989,174)	-9.77%
TOTAL COLLECTIONS*	\$ 297,583,625	100%	\$ 314,077,177	100%	\$ 16,493,552	5.54%
DISTRIBUTED COLLECTIONS**	\$ 278,511,277		\$ 288,002,043		\$ 9,490,766	3.41%

* Includes collections on both current support and arrears.

** Includes collections on both current support and arrears; also includes money sent to other states.

SOURCE: NJKiDS (Based on Federal Quarterly Report of Collections - OCSE-34A except Distributed Collections)
Distributed Collections obtained from Federal Data Report - OCSE-157, which is reported annually to Congress and used in the calculation of incentive dollars earned by each state.

TABLE 13

OFFICE OF CHILD
SUPPORT SERVICES

OFFICE OF CHILD SUPPORT SERVICES

State Summary

TITLE IV-D PATERNITY ESTABLISHMENT REPORT

Comparison of May (FFY 09 vs. FFY 10)

County Office	May 2009			May 2010			Increase or Decrease (-) from FFY 2009 to FFY 2010
	Total Children Born Out of Wedlock*	Number of Paternities Established	Percent of Paternities Established	Total Children Born Out of Wedlock*	Number of Paternities Established	Percent of Paternities Established	
Atlantic	9,067	8,096	89.3%	11,416	9,932	87.0%	-2.3%
Bergen	5,843	5,432	93.0%	6,126	5,540	90.4%	-2.5%
Burlington	8,290	7,453	89.9%	10,463	9,269	88.6%	-1.3%
Camden	24,585	21,357	86.9%	32,179	27,870	86.6%	-0.3%
Cape May	1,949	1,881	96.5%	2,535	2,373	93.6%	-2.9%
Cumberland	9,346	9,097	97.3%	12,241	11,762	96.1%	-1.2%
Essex	40,877	33,788	82.7%	52,034	42,542	81.8%	-0.9%
Gloucester	6,152	5,822	94.6%	7,736	7,255	93.8%	-0.9%
Hudson	18,660	15,034	80.6%	23,917	18,713	78.2%	-2.3%
Hunterdon	658	611	92.9%	633	589	93.0%	0.2%
Mercer	10,772	9,266	86.0%	13,880	11,795	85.0%	-1.0%
Middlesex	9,931	8,973	90.4%	12,073	10,819	89.6%	-0.7%
Monmouth	8,856	7,937	89.6%	10,324	9,097	88.1%	-1.5%
Morris	2,562	2,421	94.5%	2,608	2,427	93.1%	-1.4%
Ocean	7,903	7,341	92.9%	8,496	7,804	91.9%	-1.0%
Passaic	18,787	16,512	87.9%	20,865	18,015	86.3%	-1.5%
Salem	2,609	2,288	87.7%	3,044	2,660	87.4%	-0.3%
Somerset	3,234	2,864	88.6%	3,553	3,081	86.7%	-1.8%
Sussex	1,238	1,171	94.6%	1,233	1,153	93.5%	-1.1%
Union	12,381	10,874	87.8%	16,267	14,019	86.2%	-1.6%
Warren	1,876	1,803	96.1%	1,867	1,773	95.0%	-1.1%
Central Office	109	90	82.6%	18	14	77.8%	-4.8%
NJ TOTALS	205,685	180,111	87.6%	253,508	218,502	86.2%	-1.4%

SOURCE: NJKiDS (Based on Federal Performance Measures - OCSE-157)

* Information on Out of Wedlock Births obtained from NJ Bureau of Vital Statistics

TABLE 14

OFFICE OF CHILD
SUPPORT SERVICES

OFFICE OF CHILD SUPPORT SERVICES

State Summary

TITLE IV-D REPORT OF CASES WITH ORDERS

Comparison of May (FFY 09 vs. FFY 10)

County Office	May 2009			May 2010			Increase or Decrease (-) from FFY 2009 to FFY 2010
	TOTAL CASES	CASES WITH ORDERS	% OF CASES WITH ORDERS	TOTAL CASES	CASES WITH ORDERS	% OF CASES WITH ORDERS	
Atlantic	14,137	12,016	85.0%	15,852	12,582	79.4%	-5.6%
Bergen	13,565	12,526	92.3%	14,660	13,016	88.8%	-3.6%
Burlington	16,780	14,963	89.2%	18,236	15,567	85.4%	-3.8%
Camden	38,216	31,421	82.2%	42,150	32,067	76.1%	-6.1%
Cape May	3,695	3,379	91.4%	4,120	3,519	85.4%	-6.0%
Cumberland	14,619	13,771	94.2%	15,712	14,523	92.4%	-1.8%
Essex	56,060	43,704	78.0%	59,810	44,672	74.7%	-3.3%
Gloucester	11,071	10,288	92.9%	12,110	10,843	89.5%	-3.4%
Hudson	29,892	22,979	76.9%	34,192	24,444	71.5%	-5.4%
Hunterdon	1,934	1,771	91.6%	1,997	1,766	88.4%	-3.1%
Mercer	18,269	15,121	82.8%	19,840	16,219	81.7%	-1.0%
Middlesex	19,930	17,625	88.4%	21,219	18,340	86.4%	-2.0%
Monmouth	17,850	15,964	89.4%	18,811	16,249	86.4%	-3.1%
Morris	6,441	6,075	94.3%	6,776	6,262	92.4%	-1.9%
Ocean	16,826	15,418	91.6%	17,698	16,019	90.5%	-1.1%
Passaic	26,183	21,827	83.4%	28,352	22,602	79.7%	-3.6%
Salem	4,704	4,273	90.8%	5,146	4,545	88.3%	-2.5%
Somerset	6,464	5,544	85.8%	7,261	5,939	81.8%	-4.0%
Sussex	3,154	2,921	92.6%	3,301	2,990	90.6%	-2.0%
Union	23,137	20,155	87.1%	25,579	21,613	84.5%	-2.6%
Warren	3,602	3,343	92.8%	3,674	3,401	92.6%	-0.2%
Central Office	215	125	58.1%	130	3	2.3%	-55.8%
NJ TOTALS	346,744	295,209	85.1%	376,626	307,181	81.6%	-3.6%

SOURCE: NJKiDS (Based on Federal Performance Measures - OCSE-157)

TABLE 15
OFFICE OF CHILD
SUPPORT SERVICES

OFFICE OF CHILD SUPPORT SERVICES

State Summary

TITLE IV-D COLLECTIONS ON CURRENT SUPPORT

Comparison of May (FFY 09 vs. FFY 10)

County Office	May 2009			May 2010			Increase or Decrease (-) from FFY 2009 to FFY 2010
	Total Current Support Due	Total Current Support Distributed	Total Coll Rate	Total Current Support Due	Total Current Support Distributed	Total Coll Rate	
Atlantic	\$4,313,164	\$2,874,959	66.7%	\$4,297,987	\$2,854,727	66.4%	-0.2%
Bergen	\$8,240,380	\$5,775,193	70.1%	\$8,624,923	\$6,130,815	71.1%	1.0%
Burlington	\$6,811,285	\$4,636,434	68.1%	\$6,870,641	\$4,593,215	66.9%	-1.2%
Camden	\$9,136,115	\$5,338,934	58.4%	\$9,087,657	\$5,417,170	59.6%	1.2%
Cape May	\$1,357,530	\$902,611	66.5%	\$1,268,857	\$894,895	70.5%	4.0%
Cumberland	\$4,027,470	\$2,143,768	53.2%	\$3,677,015	\$2,103,348	57.2%	4.0%
Essex	\$13,734,995	\$7,764,773	56.5%	\$13,434,366	\$7,807,617	58.1%	1.6%
Gloucester	\$4,284,913	\$2,674,434	62.4%	\$4,264,570	\$2,746,757	64.4%	2.0%
Hudson	\$7,953,947	\$5,054,637	63.5%	\$8,011,228	\$5,227,129	65.2%	1.7%
Hunterdon	\$1,491,224	\$1,121,573	75.2%	\$1,517,154	\$1,162,695	76.6%	1.4%
Mercer	\$5,241,878	\$3,220,001	61.4%	\$5,229,204	\$3,326,479	63.6%	2.2%
Middlesex	\$7,912,771	\$4,998,294	63.2%	\$8,086,030	\$5,227,464	64.6%	1.5%
Monmouth	\$7,614,369	\$4,949,024	65.0%	\$7,627,021	\$5,122,229	67.2%	2.2%
Morris	\$4,558,298	\$3,200,980	70.2%	\$4,836,262	\$3,438,358	71.1%	0.9%
Ocean	\$6,821,017	\$4,556,173	66.8%	\$6,937,958	\$4,770,019	68.8%	2.0%
Passaic	\$7,487,265	\$4,423,745	59.1%	\$7,552,165	\$4,550,590	60.3%	1.2%
Salem	\$1,363,670	\$804,550	59.0%	\$1,301,445	\$841,128	64.6%	5.6%
Somerset	\$3,461,427	\$2,320,653	67.0%	\$3,549,167	\$2,458,916	69.3%	2.2%
Sussex	\$1,850,601	\$1,278,469	69.1%	\$1,967,469	\$1,445,127	73.5%	4.4%
Union	\$7,702,014	\$4,689,180	60.9%	\$7,817,925	\$4,820,489	61.7%	0.8%
Warren	\$1,616,327	\$1,091,277	67.5%	\$1,605,964	\$1,110,601	69.2%	1.6%
Central Office	\$46,263	\$23,681	51.2%	\$308	\$0	0.0%	-51.2%
NJ TOTALS	\$117,026,925	\$73,843,343	63.1%	\$117,565,317	\$76,049,767	64.7%	1.6%

SOURCE: NJKiDS (Based on Federal Performance Measures - OCSE-157)

TABLE 16

OFFICE OF CHILD
SUPPORT SERVICES

OFFICE OF CHILD SUPPORT SERVICES

State Summary

TITLE IV-D CASES WITH AN ARREARS PAYMENT

Comparison of May (FFY 09 vs. FFY 10)

County Office	May 2009			May 2010			Increase or Decrease (-) from FFY 2009 to FFY 2010
	Total Cases with Arrears	Total Cases with Arrears Payments	Percent of Cases with Payments on Arrears	Total Cases with Arrears	Total Cases with Arrears Payments	Percent of Cases with Payments on Arrears	
Atlantic	N/A	N/A	N/A	8,400	236	2.8%	N/A
Bergen	N/A	N/A	N/A	8,801	280	3.2%	N/A
Burlington	N/A	N/A	N/A	9,626	277	2.9%	N/A
Camden	N/A	N/A	N/A	20,008	630	3.1%	N/A
Cape May	N/A	N/A	N/A	2,379	90	3.8%	N/A
Cumberland	N/A	N/A	N/A	10,267	303	3.0%	N/A
Essex	N/A	N/A	N/A	31,223	738	2.4%	N/A
Gloucester	N/A	N/A	N/A	7,380	225	3.0%	N/A
Hudson	N/A	N/A	N/A	16,948	453	2.7%	N/A
Hunterdon	N/A	N/A	N/A	1,154	31	2.7%	N/A
Mercer	N/A	N/A	N/A	10,189	225	2.2%	N/A
Middlesex	N/A	N/A	N/A	12,493	313	2.5%	N/A
Monmouth	N/A	N/A	N/A	10,827	281	2.6%	N/A
Morris	N/A	N/A	N/A	4,343	123	2.8%	N/A
Ocean	N/A	N/A	N/A	10,460	291	2.8%	N/A
Passaic	N/A	N/A	N/A	15,321	444	2.9%	N/A
Salem	N/A	N/A	N/A	2,975	72	2.4%	N/A
Somerset	N/A	N/A	N/A	3,862	125	3.2%	N/A
Sussex	N/A	N/A	N/A	2,012	64	3.2%	N/A
Union	N/A	N/A	N/A	14,690	388	2.6%	N/A
Warren	N/A	N/A	N/A	2,331	70	3.0%	N/A
Central Office	N/A	N/A	N/A	1	0	0.0%	N/A
NJ TOTALS	N/A	N/A	N/A	205,690	5,659	2.8%	N/A

SOURCE: NJKiDS (Based on Federal Performance Measures - OCSE-157)

Data from May 2009 was unavailable for comparative purposes due to caseload conversion to NJKiDS; comparative data expected to be available for October 2010 report.

Table 17

WORK FIRST NEW JERSEY STATISTICAL SUMMARY

WFNJ

MAY 2010

COUNTY	EMPLOYMENT DIRECTED ACTIVITIES			EMPLOYED OPEN (WFNJ RECIPIENT)	SUPPORT SERVICES ON ACTIVE CASE		CLOSED FOR EMPLOYMENT THIS MONTH	POST ASSISTANCE CHILD CARE
	CWEP	ALL OTHER TRAINING	JOB SEARCH		CHILD CARE	TRAINING REL. EXPENSES		
ATLANTIC	174	183	42	165	176	206	20	149
BERGEN	147	71	106	120	146	166	9	72
BURLINGTON	414	135	22	146	220	374	17	141
CAMDEN	617	408	122	322	624	710	45	355
CAPE MAY	57	13	18	65	38	47	11	29
CUMBERLAND	201	86	216	52	70	206	17	130
ESSEX	806	1,885	400	952	1,543	2,173	114	846
GLOUCESTER	116	51	35	146	176	31	29	121
HUDSON	559	887	99	458	790	939	82	526
HUNTERDON	31	1	22	19	21	0	4	13
MERCER	527	245	192	290	464	376	23	208
MIDDLESEX	250	74	168	191	168	277	31	187
MONMOUTH	257	151	66	159	277	280	14	193
MORRIS	64	26	19	41	53	45	5	53
OCEAN	100	231	39	99	173	142	13	168
PASSAIC	1,034	332	28	245	417	679	37	166
SALEM	82	26	17	43	51	93	14	50
SOMERSET	80	44	29	75	84	61	10	73
SUSSEX	47	10	27	26	49	51	4	30
UNION	548	152	83	170	273	369	23	170
WARREN	30	7	15	36	23	7	3	39
STATE	6,141	5,018	1,765	3,820	5,836	7,232	525	3,719

Data is derived from NJ Division of Family Development's OMEGA reports

**DIVISION OF FAMILY DEVELOPMENT CURRENT PROGRAM STATISTICS
MAY 2010**

ACRONYMS

ACSES: Automated Child Support Enforcement System

CASS: Consolidated Assistance and Support System

EMERGENCY ASSISTANCE (EA) - Payments to those eligible for WFNJ/TANF or WFNJ/GA, authorized during the 30 consecutive days immediately following the emergency (defined as a substantial loss of shelter, food, clothing, or household furnishings by fire, flood or other similar disaster) or if the eligible individual or family is in an imminent or actual state of homelessness.

FOOD STAMP PROGRAM (FS) - Authorized by Congress as a nutritional supplement program to provide low income households with more food of greater variety and better nutrition. Program eligibility is based on household income, resources, and expenses for medical, shelter, and dependent care. CWA staff refers certain recipients to the New Jersey Department of Labor for participation in the Food Stamp Employment and Training Program.

FAMIS: Family Assistance Management Information System

GAAS: General Assistance Automated System

NJKIDS: New Jersey Kids Deserve Support

NJ MMIS SHARED DATA WAREHOUSE: The Shared Data Warehouse (SDW) is the repository for New Jersey's DFD and Medicaid data. Since 2003, Ingenix has administered the SDW and provided access to the data through a reporting tool known as Business Objects.

OMEGA: Online Management of Economic Goal Achievement

SSI-EA: Supplemental Security Income-Emergency Assistance

WFNJ: Work First New Jersey - Fully implemented July 1, 1997, this is New Jersey's welfare reform program which responds to the requirements of the Federal Personal Responsibility and Work Opportunity Reconciliation Act (**PRWORA**) of 1996. PRWORA establishes Temporary Assistance for Needy Families (**TANF**) as the replacement for AFDC cash assistance. WFNJ includes two segments, **WFNJ/TANF** for families with children, and **WFNJ/GA** (General Assistance) for single adults and couples without dependent children. The emphasis is on achieving self-sufficiency and limits lifetime receipt of financial assistance to a total of five years.

EXPLANATORY NOTES

The Department of Human Services Division of Family Development provides basic income and an opportunity to achieve self-sufficiency for individuals and families served by the Division's programs. The Division provides leadership, direction and supervision to those public agencies responsible for administering those programs and plans for and develops policies to promote self-sufficiency.

**DIVISION OF FAMILY DEVELOPMENT CURRENT PROGRAM STATISTICS
MAY 2010**

WFNJ Statistical Summary (Table 17)

Employment Directed Activities (EDA) - From Activities Summary Report (OMEGA report # RM064). Unduplicated count of persons participating in Community Work Experience Program (CWEP), All Other Training, or Job Search.

Number of Persons Employed This Month, Still Receiving TANF – Individuals with open “empl” activity on OMEGA. Ad hoc report.

Participants Receiving Child Care Services - From Issuance Disbursement Summary (OMEGA report # RM703). Total number of active participants who show receipt of **Child Care**.

Number of Persons Closed on FAMIS Due to Employment- From FAMIS report # FM463.

Post TANF and Receiving Child Care - Persons no longer in receipt of TANF but still receiving child care. From Issuance Disbursement Summary (OMEGA report # RM703).