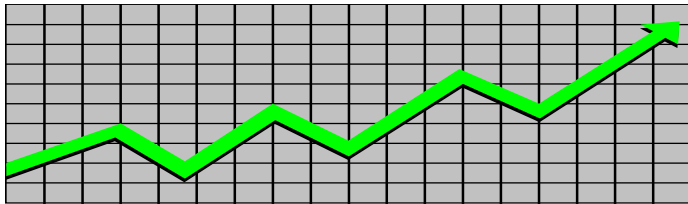


State of New Jersey
Department of Human Services
Division of Family Development

CURRENT PROGRAM STATISTICS



October 2019
Natasha Johnson, Assistant Commissioner

**DIVISION OF FAMILY DEVELOPMENT CURRENT PROGRAM STATISTICS
OCTOBER 2019**

TABLE OF CONTENTS

HIGHLIGHTS:

WFNJ/TANF	ii
NJ SNAP	ii
EMERGENCY ASSISTANCE	ii
GENERAL ASSISTANCE	iii
GA Emergency Assistance.....	iii
GA Program.....	iii
CHILD SUPPORT SERVICES	iii
WORK FIRST NEW JERSEY (WFNJ)	iii
STATISTICS- BY STATE & COUNTY	1
Table 1: WFNJ/TANF Families & Persons (NJ Statewide) October 2017 to 2019.....	1
Table 2: WFNJ/TANF Families (by County)- October 2019.....	2
Table 2B: WFNJ/TANF Persons, Adults, & Children (by County)- October 2019.....	3
Table 3: TANF Work Participation Rates Over 12 Month Period (by County)- October 2019.....	4
Table 4: TANF Work Participation Rates Over 12 Month Period (NJ Statewide) October 2019.....	5
Table 5: NJ SNAP Households/Persons (NJ Statewide) October 2017 to 2019.....	6
Table 6: NJ SNAP Recipient Trends (NJ Statewide) October 2017 to 2019.....	7
Table 7: NJ SNAP Households/Persons (by County)- October 2019.....	8
Table 8: Emergency Assistance Program (NJ Statewide) October 2017 to 2019.....	9
Table 9: Emergency Assistance Program (by County)- October 2019.....	10
Table 10: General Assistance Program (NJ Statewide) October 2017 to 2019.....	11
Table 11: General Assistance Program (by County)- October 2019	12
Table 12: Child Support Services Distributions (NJ Statewide) FFY 2019.....	13
Table 13: Child Support Services Paternities Established- October 2019.....	14
Table 14: Child Support Services Cases With Orders- October 2019.....	15
Table 15: Child Support Services Collections On Current Support- October 2019.....	16
Table 16: Child Support Services Cases With Payments On Arrears- October 2019.....	17
Table 17: WFNJ Statistical Summary- October 2019.....	18
ACRONYMS	19
EXPLANATORY NOTES	20
WFNJ Statistical Summary (Table 17).....	20

**DIVISION OF FAMILY DEVELOPMENT CURRENT PROGRAM STATISTICS
OCTOBER 2019**

Each month the Division of Family Development publishes its program statistics for: WFNJ/TANF, NJ SNAP, Emergency Assistance, General Assistance, and Child Support Services. When possible, information is provided separately for children and adults. Many tables also provide trend data with information broken down by county for readers to consider. This report is compiled and prepared by The Bureau of Research & Reporting.

WFNJ/TANF

- As of the end of October, the TANF caseload had decreased by 1,755 cases, from 12,461 in October 2018 to 10,706 in October 2019, a decrease of 14.1%.

- The counties with caseloads that increased the most since October 2018 were Warren (3.0%), Hunterdon (11.1%) and Cape May (13.5%).

- The counties with caseloads that decreased the most since October 2018 were Camden (-18.4%), Cumberland (-22.5%) and Sussex (-40.4%).

- Of the WFNJ/TANF cases, 3,556 or 33.2% were child-only in October 2019.

- The counties with the most child-only cases were Camden (572), Essex (403) and Passaic (376).

- Essex (4,616), Hudson (3,385), Camden (3,372), Passaic (2,967) and Atlantic (1,757) counties had the greatest number of persons receiving TANF in October 2019.

NJ SNAP (formerly FOOD STAMPS)

- In October 2019, there were 338,382 households receiving NJ SNAP benefits. The number of NJ SNAP households decreased by 24,503 or 6.8%, since October 2018.

- There were 666,215 persons receiving NJ SNAP benefits as of October 2019, a decrease of 55,615 or 7.7% since October 2018.

- The counties having the highest caseload decrease since October 2018 are Burlington (-10.9%), Somerset (11.2%) and Cumberland (-11.7%).

EMERGENCY ASSISTANCE

- There were 1,830 TANF families receiving Emergency Assistance (EA) in October 2019, an increase of 208 or 12.8% since October 2018.

- In October 2019, EA payments were made for 678 SSI recipients.

**DIVISION OF FAMILY DEVELOPMENT CURRENT PROGRAM STATISTICS
OCTOBER 2019**

- There were 2,209 GA cases with Emergency Assistance payments in October 2019, an increase of 221 or 11.1% since October 2018.
 - The counties that showed the highest percent increase in Emergency Assistance payments were Sussex (63.2%), Somerset (67.3%) and Monmouth (100.0%).
 - The counties that showed the highest percent decrease in Emergency Assistance payments were Gloucester (-14.8%), Mercer (-17.2%) and Passaic (-18.7%).

GENERAL ASSISTANCE

- The total numbers of cases receiving GA has decreased from 11,301 to 9,997 since October 2018, a decrease of 11.5%.
- There were 3,980 Employable GA and 6,017 Unemployable GA cases in October 2019.
- The counties that showed a percent increase for GA cases were Somerset (11.9%), Hunterdon (26.8%) and Sussex (35.2%) since October 2018.
- The counties that showed the highest percent decrease for GA cases since October 2018 were Mercer (-18.5%), Ocean (-18.5%) and Bergen (-22.7%).
- In October 2019, GA cases showed a 4.1% decrease since September 2019.

CHILD SUPPORT SERVICES (Quarterly Report)

- The total collection for the Child Support Services Program was about \$304 million from July 2019 to September 2019, an increase of 2.0 percent over the same period for FFY 2018.
- Total distributions increased 1.1% from September 2018.

WORK FIRST NEW JERSEY (WFNJ)

- During the report month of October 2019, there were 1,140 families in which at least one member was employed and an additional 140 families whose WFNJ assistance cases were closed due to employment - related earnings.
- The three counties with the greatest number of employed active WFNJ recipients were: Essex (280), Camden (140) and Hudson (126).
- There were 948 former TANF cases receiving post-TANF support in the form of child care assistance.

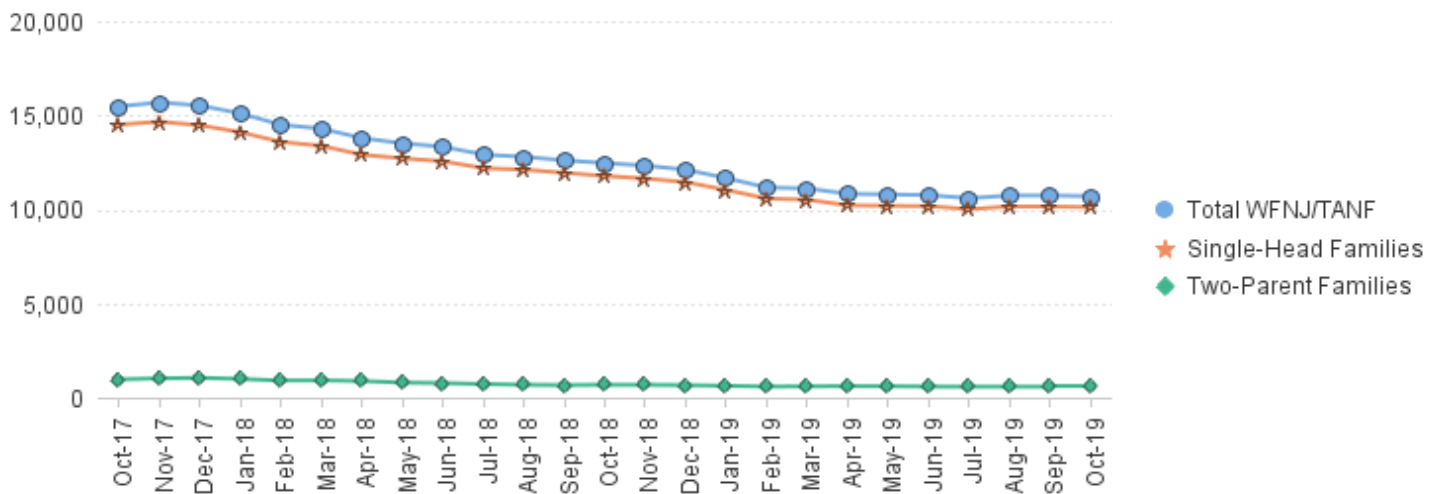
TABLE 1: WFNJ/TANF PROGRAM

STATEWIDE NUMBER OF APPLICATIONS AND TERMINATIONS DURING OCTOBER 2019

NUMBER OF ELIGIBLE FAMILIES & PERSONS RECEIVING WFNJ/TANF FOR OCTOBER 2019

OCTOBER 2017 THROUGH OCTOBER 2019												
		Cases Added	Cases Closed	Child-Only	Total	2-Parent	Total	%CHNG	Total	%CHNG	Adults	Children
				Cases ‡	Single-Head Families	Families	WFNJ/TANF Families	(1 Yr.)		(1 Yr.)		
2017	OCT	1,534	1,704	4,876	14,504	972	15,476	-23.2%	38,907	-22.1%	11,572	27,335
	NOV	1,539	1,581	4,885	14,662	1,022	15,684	-20.1%	39,534	-18.9%	11,821	27,713
	DEC	1,434	1,686	4,850	14,470	1,054	15,524	-19.2%	39,246	-17.6%	11,728	27,518
2017	Average	1,444	1,818	5,178	15,395	1,069	16,464		41,327		12,355	28,972
2018	JAN	1,289	1,706	4,770	14,103	994	15,097	-18.9%	38,222	-17.7%	11,321	26,901
	FEB	1,226	1,885	4,695	13,589	910	14,499	-19.3%	36,645	-18.2%	10,714	25,931
	MAR	1,097	1,398	4,670	13,377	918	14,295	-18.7%	35,943	-18.3%	10,543	25,400
	APR	1,050	1,548	4,610	12,905	883	13,788	-18.6%	34,557	-18.6%	10,061	24,496
	MAY	1,177	1,506	4,514	12,715	800	13,515	-17.6%	33,791	-18.0%	9,801	23,990
	JUN	1,287	1,555	4,483	12,558	773	13,331	-17.4%	33,203	-18.1%	9,621	23,582
	JUL	1,111	1,517	4,389	12,192	723	12,915	-18.6%	32,023	-19.6%	9,249	22,774
	AUG	1,241	1,440	4,349	12,114	681	12,795	-18.8%	32,848	-17.2%	9,127	23,721
	SEP	1,341	1,600	4,287	11,944	665	12,609	-19.2%	31,154	-20.7%	8,987	22,167
	OCT	1,318	1,455	4,222	11,778	683	12,461	-19.5%	31,066	-20.2%	8,922	22,144
	NOV	1,191	1,381	4,180	11,645	681	12,326	-21.4%	30,734	-22.3%	8,827	21,907
	DEC	929	1,194	4,128	11,449	664	12,113	-22.0%	30,318	-22.7%	8,649	21,669
2018	Average	1,188	1,515	4,441	12,531	781	13,312		33,375		9,652	23,724
2019	JAN	967	1,444	4,093	11,034	628	11,662	-22.8%	29,021	-24.1%	8,197	20,824
	FEB	791	1,408	3,913	10,577	589	11,166	-23.0%	27,815	-24.1%	7,842	19,973
	MAR	989	1,340	3,986	10,516	597	11,113	-22.3%	27,603	-23.2%	7,724	19,879
	APR	998	1,271	3,906	10,216	614	10,830	-21.5%	26,968	-22.0%	7,538	19,430
	MAY	1,084	1,174	3,830	10,191	606	10,797	-20.1%	26,865	-20.5%	7,573	19,292
	JUN	1,024	1,135	3,790	10,175	588	10,763	-19.3%	26,674	-19.7%	7,561	19,113
	JUL	1,040	1,231	3,710	10,014	580	10,594	-18.0%	26,323	-17.8%	7,464	18,859
	AUG	1,209	1,135	3,723	10,158	582	10,740	-16.1%	26,735	-18.6%	7,599	19,136
	SEP	1,055	1,048	3,679	10,153	586	10,739	-14.8%	26,803	-14.0%	7,646	19,157
	OCT	1,137	1,253	3,556	10,120	586	10,706	-14.1%	26,933	-13.3%	7,736	19,197
2019	AVG to date	1,029	1,244	3,819	10,315	596	10,911		27,174		7,688	19,486

**NJ STATEWIDE
Eligible Families Receiving WFNJ/TANF
OCTOBER 2017 THROUGH OCTOBER 2019**



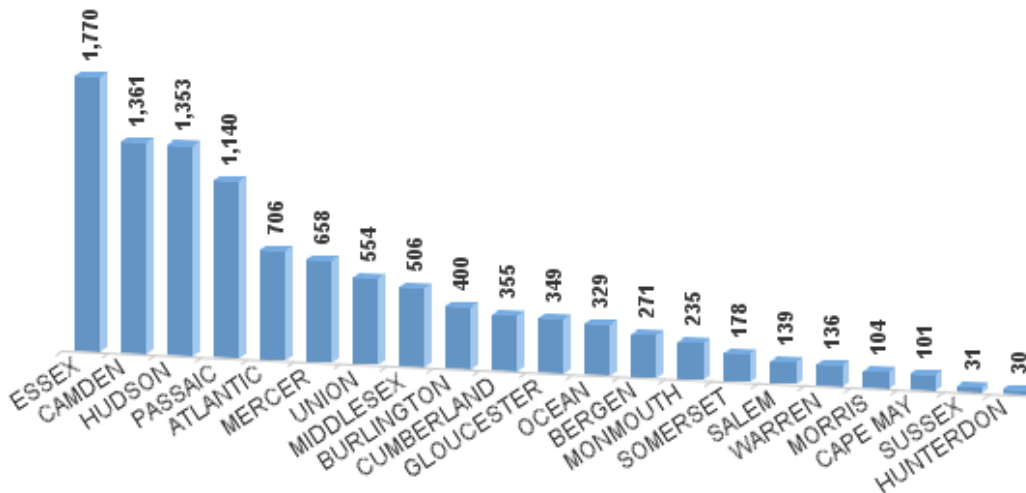
Data is derived from NJ MMIS Shared Data Warehouse Issuance files.
Effective July 2013 this data query source was converted to the SDW

‡ Child-only cases are defined as families in which no eligible adult receives TANF program benefits, yet the family continues to be headed by at least one of the biological parents, or grandparents, or other appropriate adult.

TABLE 2:
WFNJ/TANF PROGRAM NUMBER OF APPLICATIONS AND TERMINATIONS BY COUNTY DURING OCTOBER 2019
NUMBER OF ELIGIBLE FAMILIES RECEIVING WFNJ/TANF FOR OCTOBER 2019

County	Cases Added	Cases Closed **	Child-	Total		Total		%CHNG (3 Mon)	%CHNG (1 Yr.)
			Only Cases ‡	1-Adult Cases	Single-Head Families	2-Parent Families	WFNJ/TANF Families		
ATLANTIC	73	54	285	385	670	36	706	5.2%	-15.8%
BERGEN	27	20	64	184	248	23	271	3.4%	-12.6%
BURLINGTON	46	60	140	244	384	16	400	-1.2%	-17.9%
CAMDEN	114	183	572	744	1,316	45	1,361	-4.0%	-18.4% *
CAPE MAY	12	5	42	54	96	5	101	2.0%	13.5% Δ
CUMBERLAND	43	58	148	185	333	22	355	-6.8%	-22.5% *
ESSEX	246	289	403	1,276	1,679	91	1,770	2.1%	-18.0%
GLOUCESTER	48	34	138	198	336	13	349	5.1%	-3.9%
HUDSON	141	164	373	895	1,268	85	1,353	-2.9%	-14.0%
HUNTERDON	5	1	12	15	27	3	30	15.4%	11.1% Δ
MERCER	62	111	235	391	626	32	658	-5.6%	-11.1%
MIDDLESEX	56	46	203	271	474	32	506	3.7%	-7.0%
MONMOUTH	22	13	94	133	227	8	235	-0.4%	-17.0%
MORRIS	14	12	25	63	88	16	104	1.0%	1.0%
OCEAN	31	29	109	206	315	14	329	-2.9%	-3.2%
PASSAIC	87	75	376	710	1,086	54	1,140	0.7%	-14.5%
SALEM	15	21	56	77	133	6	139	0.7%	-4.1%
SOMERSET	22	14	57	113	170	8	178	4.1%	-13.2%
SUSSEX	4	6	10	16	26	5	31	3.3%	-40.4% *
UNION	62	48	181	316	497	57	554	2.4%	-9.8%
WARREN	7	10	33	88	121	15	136	-5.6%	3.0% Δ
NJ Total	1,137	1,253	3,556	6,564	10,120	586	10,706	-0.3%	-14.1%

**Total WFNJ/TANF Families
 OCTOBER 2019
 By County**



Data is derived from NJ MMIS Shared Data Warehouse Issuance files.
 Effective July 2013 this data query source was converted to the SDW

‡ Child-only cases are defined as families in which no eligible adult receives TANF program benefits, yet the family continues to be headed by at least one of the biological parents, or grandparents, or other appropriate adult

** 'Cases closed' include cases that received a benefit in the prior month, but did not receive any TANF benefit for the report month.

Δ=higher caseload % change

*=lower caseload % change

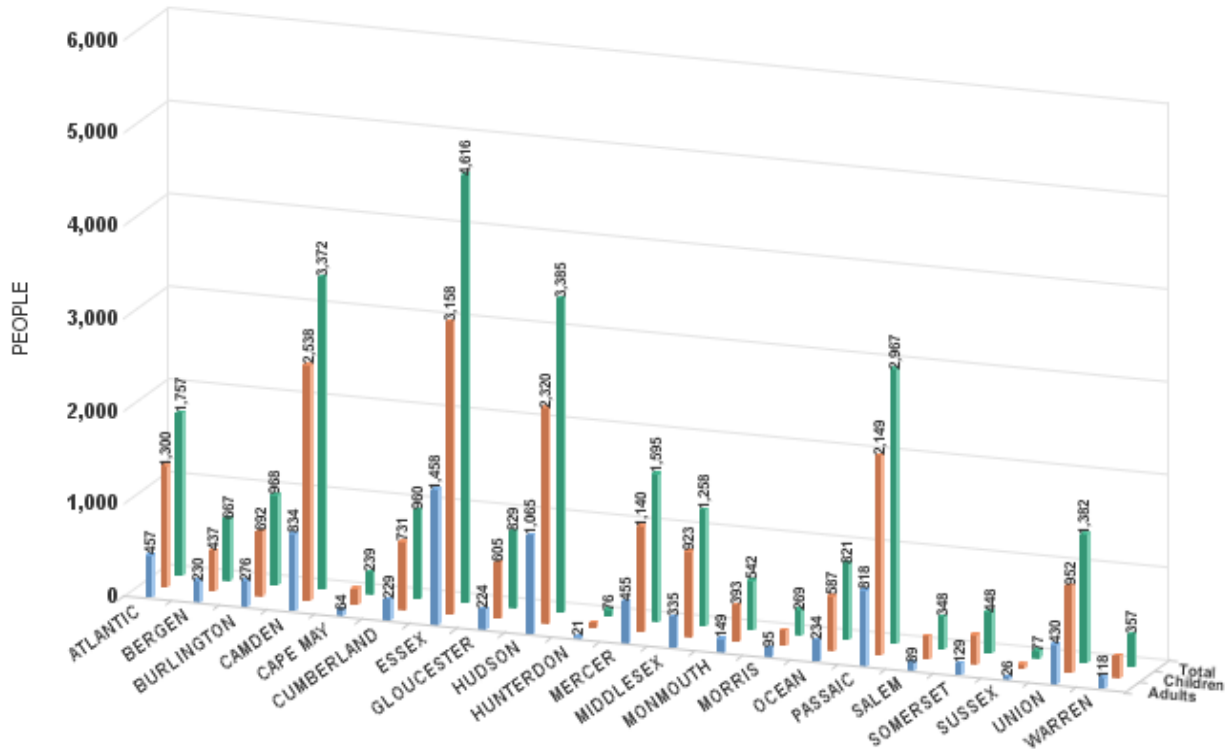
TABLE 2B :
WFNJ/TANF
PROGARM **NUMBER OF PARTICIPATING PERSONS, ADULTS, AND CHILDREN**
BY COUNTY FOR OCTOBER 2019

PERSONS

County	Adults	Children	Child/Adult Ratio	Total Persons	% Chng (1 Yr)	Persons Per Case
ATLANTIC	457	1,300	2.84	1,757	-15.7%	2.49
BERGEN	230	437	1.90	667	-12.6%	2.46
BURLINGTON	276	692	2.51	968	-20.9% *	2.42
CAMDEN	834	2,538	3.04	3,372	-17.2%	2.48
CAPE MAY	64	175	2.73	239	13.3% Δ	2.37
CUMBERLAND	229	731	3.19	960	-21.9% *	2.70
ESSEX	1,458	3,158	2.17	4,616	-15.3%	2.61
GLOUCESTER	224	605	2.70	829	-6.4%	2.38
HUDSON	1,065	2,320	2.18	3,385	-11.6%	2.50
HUNTERDON	21	55	2.62	76	10.1% Δ	2.53
MERCER	455	1,140	2.51	1,595	-10.5%	2.42
MIDDLESEX	335	923	2.76	1,258	-3.8%	2.49
MONMOUTH	149	393	2.64	542	-14.9%	2.31
MORRIS	95	174	1.83	269	4.3% Δ	2.59
OCEAN	234	587	2.51	821	-5.1%	2.50
PASSAIC	818	2,149	2.63	2,967	-15.8%	2.60
SALEM	89	259	2.91	348	-4.1%	2.50
SOMERSET	129	319	2.47	448	-10.2%	2.52
SUSSEX	26	51	1.96	77	-36.4% *	2.48
UNION	430	952	2.21	1,382	-10.5%	2.49
WARREN	118	239	2.03	357	1.7%	2.63
NJ Total	7,736	19,197	2.48	26,933	-13.3%	2.52

Δ=higher caseload % change

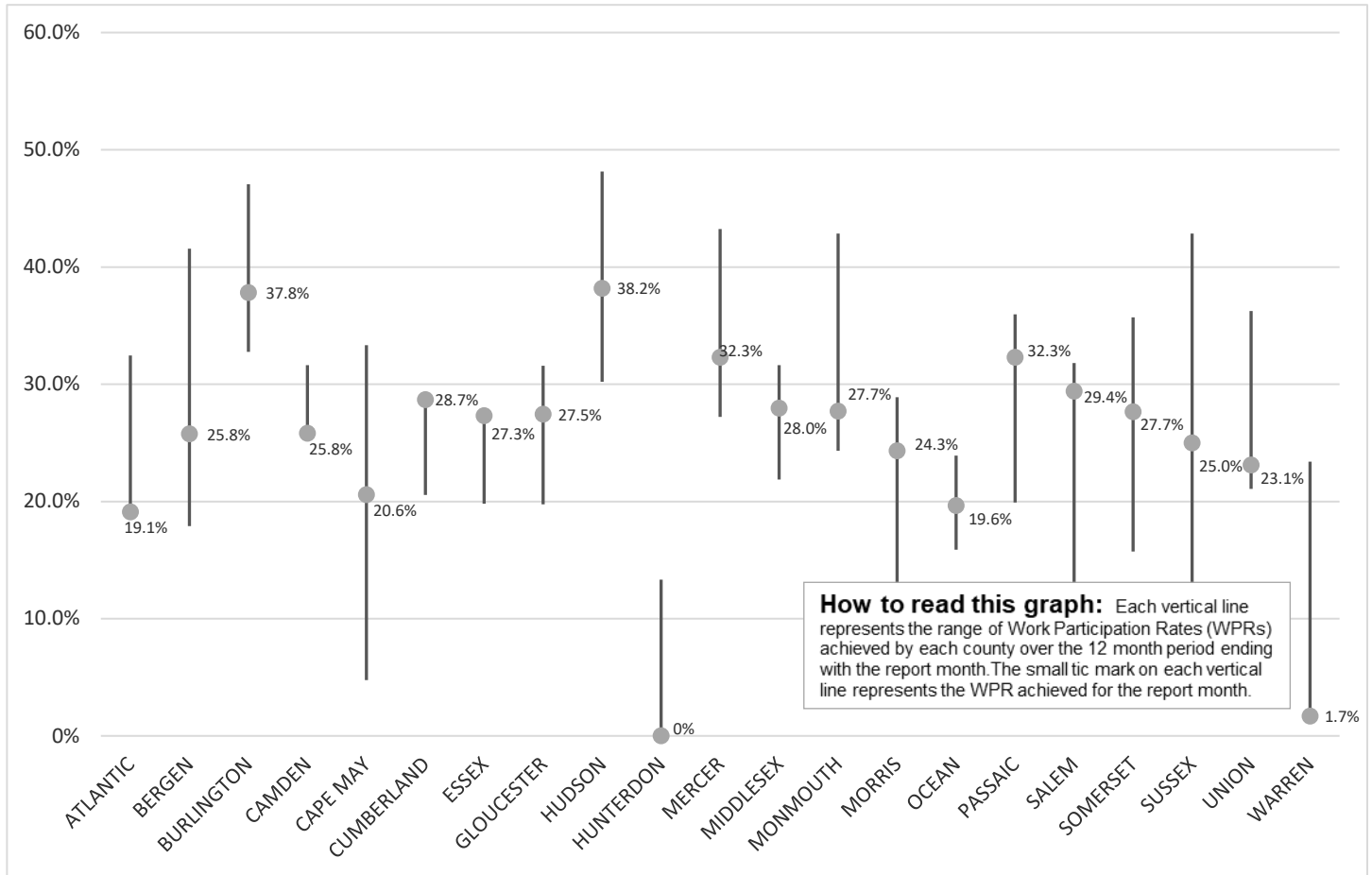
*=lower caseload % change



Data is derived from NJ MMIS Shared Data Warehouse Issuance files.
 Effective July 2013 this data query source was converted to the SDW

TABLE 3 :

Work Participation Rates Achieved Over 12 Month Period
Ending with OCTOBER 2019

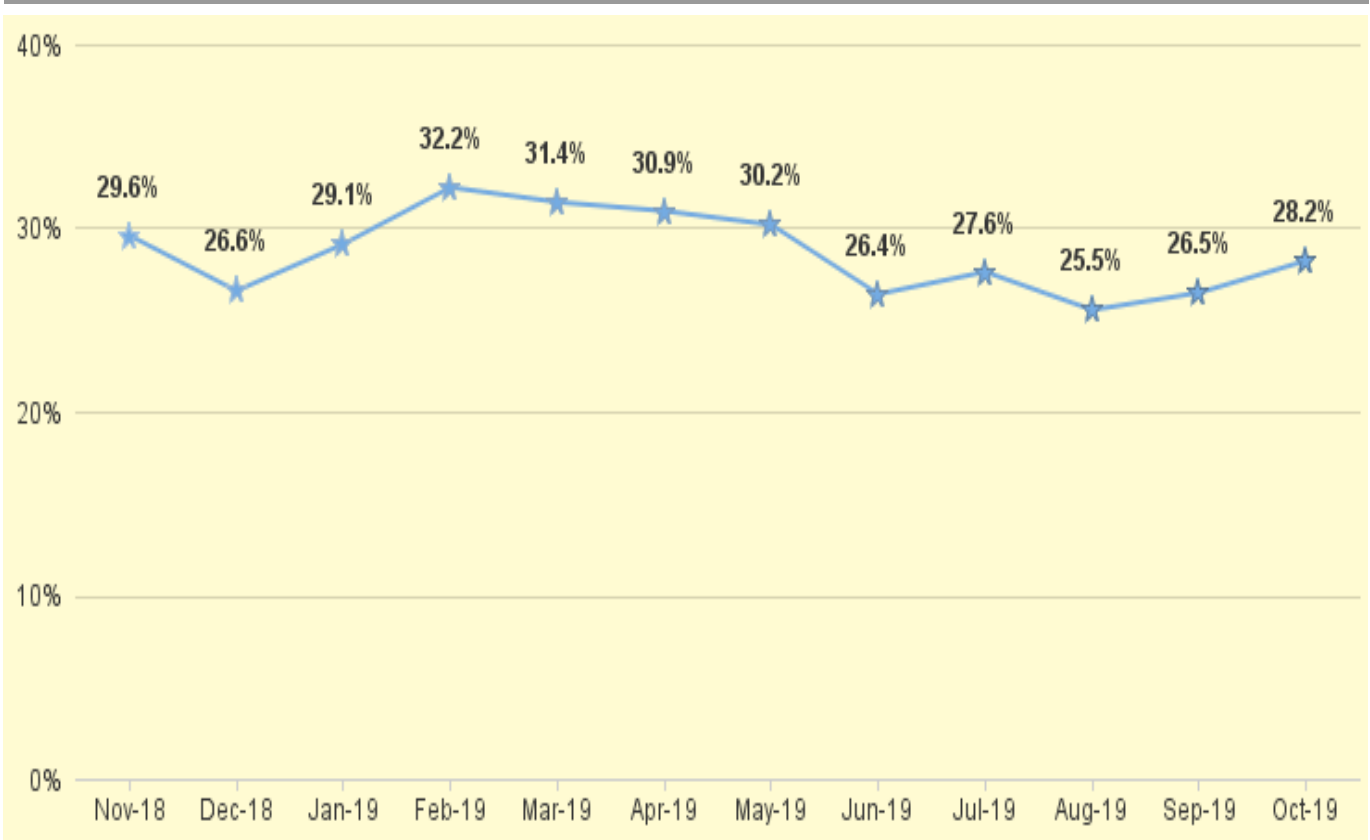


Data is derived from NJ MMIS Shared Data Warehouse Issuance files.

Effective July 2013 this data query source was converted to the SDW

TABLE 4 :

WFNJ/TANF Work Participation Rates
for 12-Month Period Ending with OCTOBER 2019 Statewide



* The Work Participation rate measures the number of countable Temporary Assistance for Needs Families (TANF) participants based on federal formula. The reported rate is considered to be preliminary until officially calculated by the federal government soon after the close of each federal fiscal year.

TABLE 5 :

NJ SNAP
(FOOD STAMPS)NUMBER OF PARTICIPATING HOUSEHOLDS, PERSONS, ADULTS
AND CHILDREN FOR OCTOBER 2019 (STATEWIDE)

OCTOBER 2017 THROUGH OCTOBER 2019

		HOUSEHOLDS				PERSONS				Age 60+	People with a disability
		WFNJ/ TANF	Other low income	Total	% CHNG (1 YR)	Adults	Children	TOTAL	% CHNG (1 YR)		
2017	OCT	14,762	370,462	385,224	-8.3%	403,103	363,198	766,301	-8.5%	130,948	219,170
	NOV	14,783	370,436	385,219	-8.0%	403,158	364,706	767,864	-8.1%	130,391	219,210
	DEC	14,648	371,916	386,564	-7.4%	404,418	367,199	771,617	-7.4%	130,292	222,460
2017	Average	15,509	379,521	395,030		413,501	374,531	788,032		131,220	220,759
2018	JAN	13,996	366,670	380,666	-6.9%	398,026	360,502	758,528	-7.1%	128,879	218,735
	FEB	13,566	364,750	378,316	-6.7%	395,314	357,938	753,252	-7.0%	128,094	217,046
	MAR	13,362	366,128	379,490	-5.8%	396,620	360,051	756,671	-5.9%	127,792	216,741
	APR	12,787	360,385	373,172	-7.0%	390,319	353,157	743,476	-7.2%	126,571	214,558
	MAY	12,646	358,605	371,251	-6.4%	388,870	351,724	740,594	-6.4%	125,945	213,705
	JUN	12,636	360,531	373,167	-5.5%	391,455	353,883	745,338	-5.3%	130,916	213,689
	JUL	12,142	355,160	367,302	-6.3%	385,535	346,628	732,163	-6.3%	129,767	211,396
	AUG	12,162	354,922	367,084	-6.1%	385,645	345,658	731,303	-6.2%	129,230	210,919
	SEP	11,978	355,023	367,001	-6.0%	386,047	344,801	730,848	-6.2%	128,684	210,278
	OCT	11,828	351,057	362,885	-5.8%	381,993	339,837	721,830	-5.8%	127,534	208,715
	NOV	11,524	349,288	360,812	-6.3%	380,136	336,835	716,971	-6.6%	126,941	208,324
	DEC	11,056	347,269	358,325	-7.3%	377,967	334,264	712,231	-7.7%	126,299	210,239
2018	Average	12,474	357,482	369,956		388,161	348,773	736,934		128,054	212,862
2019	JAN	11,080	347,492	358,572	-5.8%	378,698	333,780	712,478	-6.1%	125,563	208,860
	FEB	9,524	325,936	335,460	-11.3%	354,132	303,701	657,833	-12.7%	121,511	199,781
	MAR	10,469	341,314	351,783	-7.3%	372,223	325,898	698,121	-7.7%	123,658	205,933
	APR	10,136	336,819	346,955	-7.0%	367,367	319,361	686,728	-7.6%	122,716	204,624
	MAY	10,284	337,321	347,605	-6.4%	368,192	319,432	687,624	-7.2%	122,594	203,974
	JUN	10,149	336,301	346,450	-7.2%	367,279	317,566	684,845	-8.1%	122,060	203,512
	JUL	9,962	333,891	343,853	-6.4%	365,264	314,222	679,486	-7.2%	121,238	202,824
	AUG	10,570	336,384	346,954	-5.5%	368,890	317,373	686,263	-6.2%	121,200	203,620
	SEP	10,319	331,162	341,481	-7.0%	363,290	310,676	673,966	-7.8%	120,200	202,119
	OCT	10,242	328,140	338,382	-6.8%	360,298	305,917	666,215	-7.7%	119,254	200,853
2019	AVG to date	10,274	335,476	345,750		366,563	316,793	683,356		121,999	203,610

This Table is based on those Households & Persons that received SNAP issuances (benefits) during the month

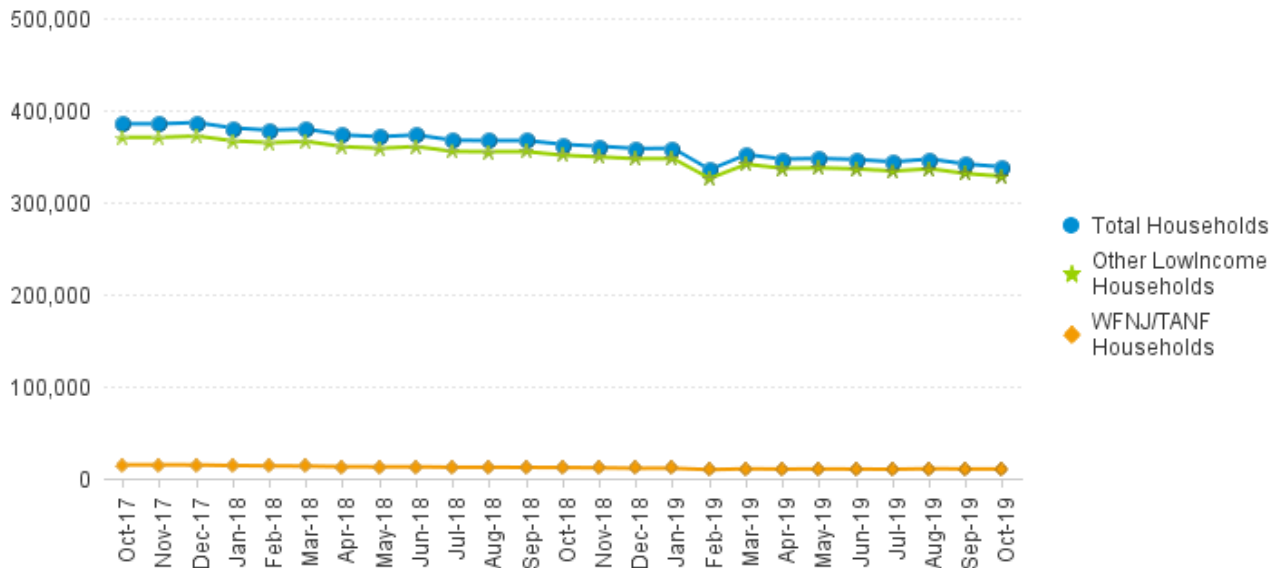
Data is derived from NJ MMIS Shared Data Warehouse.

Effective July 2013 this data query source was converted to the SDW.

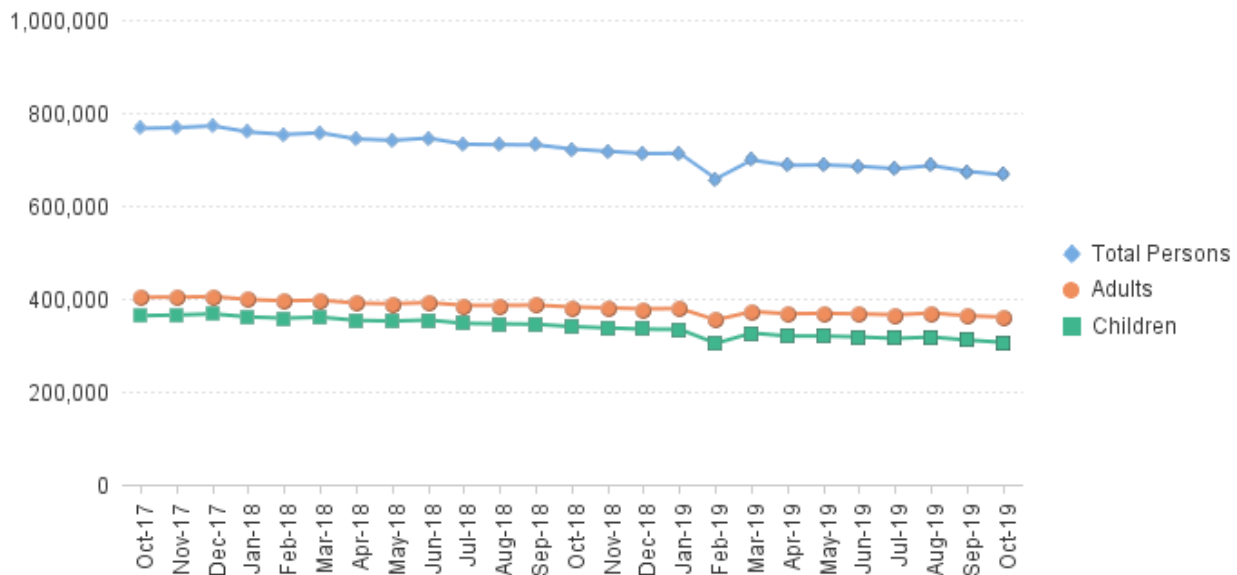
* Age 60+ and People with a disability columns are independent subsets of total persons. An individual might appear in both columns

**TABLE 6: NJ SNAP (FOOD STAMPS)
TRENDS FOR PARTICIPATING HOUSEHOLDS & PERSONS
OCTOBER 2017 THROUGH OCTOBER 2019 (STATEWIDE)**

Statewide NJ SNAP Households: OCTOBER 2017 Through OCTOBER 2019



Statewide NJ SNAP Persons: OCTOBER 2017 Through OCTOBER 2019



Data is derived from NJ MMIS Shared Data Warehouse Issuance files.

Effective July 2013 this data query source was converted to the SDW

TABLE 7 :

NJ SNAP

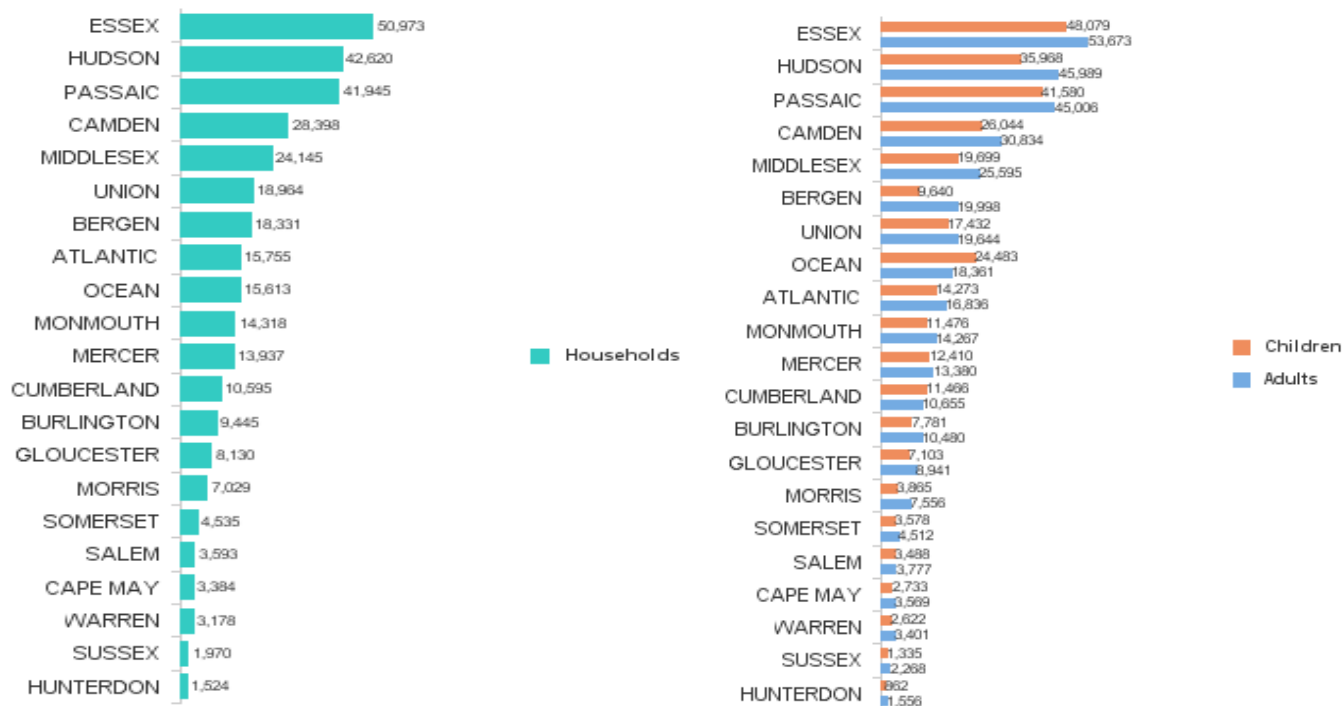
NUMBER OF PARTICIPATING HOUSEHOLDS, PERSONS, ADULTS AND CHILDREN BY COUNTY FOR OCTOBER 2019

County	HOUSEHOLDS				PERSONS				Age 60+	People with a disability
	WFNJ/TANF	Other low income	TOTAL	% Chng (1 Yr)	Adults	Children	TOTAL	% Chng (1 Yr)		
ATLANTIC	622	15,133	15,755	-9.0%	16,836	14,273	31,109	-10.2%	4,602	9,053
BERGEN	262	18,069	18,331	-5.7%	19,998	9,640	29,638	-8.2%	11,497	14,332
BURLINGTON	375	9,070	9,445	-10.9% *	10,480	7,781	18,261	-12.1% *	2,680	6,066
CAMDEN	1,222	27,176	28,398	-7.7%	30,834	26,044	56,878	-8.1%	7,367	16,536
CAPE MAY	101	3,283	3,384	-6.2%	3,569	2,733	6,302	-7.4%	1,008	2,128
CUMBERLAND	329	10,266	10,595	-11.7% *	10,655	11,466	22,121	-12.6% *	2,598	6,415
ESSEX	1,979	48,994	50,973	-5.8%	53,673	48,079	101,752	-7.0%	14,453	26,328
GLOUCESTER	297	7,833	8,130	-2.4% Δ	8,941	7,103	16,044	-4.3%	2,153	5,431
HUDSON	1,259	41,361	42,620	-8.1%	45,989	35,968	81,957	-8.8%	17,245	25,112
HUNTERDON	33	1,491	1,524	-0.2% Δ	1,556	862	2,418	-1.0% Δ	534	981
MERCER	626	13,311	13,937	-7.1%	13,380	12,410	25,790	-8.2%	3,865	8,807
MIDDLESEX	469	23,676	24,145	-6.2%	25,595	19,699	45,294	-7.8%	11,852	16,153
MONMOUTH	220	14,098	14,318	-6.9%	14,267	11,476	25,743	-8.3%	5,274	8,888
MORRIS	107	6,922	7,029	-6.7%	7,556	3,865	11,421	-8.9%	3,923	5,032
OCEAN	314	15,299	15,613	-5.3%	18,361	24,483	42,844	-5.3%	4,970	9,385
PASSAIC	1,104	40,841	41,945	-5.1%	45,006	41,580	86,586	-5.7%	13,732	20,145
SALEM	121	3,472	3,593	-2.8%	3,777	3,488	7,265	-1.8% Δ	835	2,203
SOMERSET	156	4,379	4,535	-11.2% *	4,512	3,578	8,090	-11.8% *	1,982	3,085
SUSSEX	43	1,927	1,970	-1.0% Δ	2,268	1,335	3,603	0.5% Δ	705	1,511
UNION	474	18,490	18,964	-6.8%	19,644	17,432	37,076	-7.8%	7,021	11,102
WARREN	129	3,049	3,178	-4.2%	3,401	2,622	6,023	-6.3%	958	2,160
NJ TOTAL	10,242	328,140	338,382	-6.8%	360,298	305,917	666,215	-7.7%	119,254	200,853

Δ=higher caseload % change

*=lower caseload % change

Total NJ SNAP Recipients
OCTOBER 2019 by County



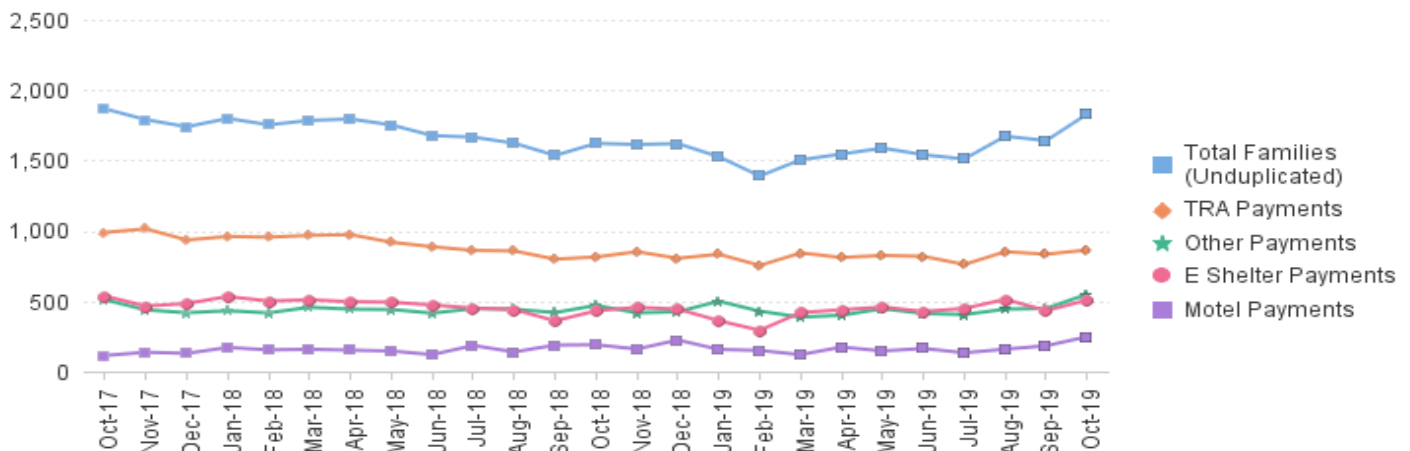
Data is derived from NJ MMIS Shared Data Warehouse.
Effective July 2013 this data query source was converted to the SDW.

* Age 60+ and People with a disability columns are independent subsets of total persons. An individual might appear in both columns.

TABLE 8 : EMERGENCY ASSISTANCE TOTAL NUMBER OF ELIGIBLE FAMILIES RECEIVING EMERGENCY ASSISTANCE PAYMENTS OCTOBER 2017 THROUGH OCTOBER 2019 - STATEWIDE (STATEWIDE)

		Total WFNJ/EA Families (Undupl)		Temp Rent Asst. Payments (Undupl)		Motel Housing Payments (Undupl)		Shelter/Transitional Housing Payments (Undupl)		Other WFNJ/EA Payments (Undupl)	
			% CHNG (1 YR)		% CHNG (1 YR)		% CHNG (1 YR)		% CHNG (1 YR)		% CHNG (1 YR)
2017	OCT	1,867	-32.7%	989	-39.5%	114	-63.5%	536	-0.6%	510	-14.6%
	NOV	1,790	-30.3%	1,014	-36.7%	137	-19.9%	465	-6.4%	438	-26.0%
	DEC	1,740	-29.2%	935	-39.6%	129	-21.8%	484	-1.4%	418	-28.8%
2017 Average		2,021		1,185		134		491		468	
2018	JAN	1,799	-24.0%	960	-35.0%	171	-6.6%	533	9.2%	432	-15.3%
	FEB	1,754	-20.7%	955	-30.6%	154	27.3%	501	0.8%	417	-11.8%
	MAR	1,785	-23.4%	968	-31.1%	158	-4.2%	510	-1.4%	457	-16.3%
	APR	1,795	-13.6%	973	-26.4%	152	12.6%	496	11.2%	443	1.8%
	MAY	1,753	-15.0%	919	-27.1%	146	10.6%	493	3.6%	441	-0.2%
	JUN	1,677	-18.5%	887	-24.7%	120	-8.4%	473	-3.5%	415	-14.6%
	JUL	1,666	-12.1%	861	-23.7%	185	46.8%	451	-5.1%	447	18.3%
	AUG	1,623	-17.9%	857	-21.3%	139	20.9%	441	-18.2%	443	-6.9%
	SEP	1,536	-18.2%	799	-23.3%	188	52.8%	360	-25.0%	419	-17.5%
	OCT	1,622	-13.1%	814	-17.7%	190	66.7%	432	-19.4%	470	-7.8%
	NOV	1,614	-9.8%	852	-16.0%	160	16.8%	456	-1.9%	417	-4.8%
	DEC	1,620	-6.9%	805	-13.9%	224	73.6%	444	-8.3%	425	1.7%
2018 Average		1,687		888		166		466		436	
2019	JAN	1,527	-15.1%	834	-13.1%	157	-8.2%	361	-32.3%	500	15.7%
	FEB	1,390	-20.8%	754	-21.0%	150	-2.6%	293	-41.5%	429	2.9%
	MAR	1,505	-15.7%	843	-12.9%	120	-24.1%	419	-17.8%	387	-15.3%
	APR	1,546	-13.9%	811	-16.6%	174	14.5%	439	-11.5%	400	-9.7%
	MAY	1,588	-9.4%	825	-10.2%	146	0.0%	458	-7.1%	446	1.1%
	JUN	1,541	-8.1%	819	-7.7%	164	36.7%	427	-9.7%	413	-0.5%
	JUL	1,511	-9.3%	761	-11.6%	133	-28.1%	448	-0.7%	405	-9.4%
	AUG	1,673	3.1%	852	-0.6%	159	14.4%	513	16.3%	443	0.0%
	SEP	1,641	6.8%	834	4.4%	183	-2.7%	433	20.3%	449	7.2%
	OCT	1,830	12.8%	864	6.1%	247	30.0%	508	17.6%	549	16.8%
2019 AVG to date		1,575		820		163		430		442	

NJ STATEWIDE Families Receiving Emergency Assistance OCTOBER 2017 THROUGH OCTOBER 2019



WFNJ/EA data is derived from NJ MMIS Shared Data Warehouse. Effective July 2013 this data query source was converted to the SDW.

* Effective Feb '11 Transitional Housing Payments were removed from 'Other EA Payments' and added to 'Shelter Payments'.

TABLE 9 :

EMERGENCY ASSISTANCE (BY COUNTY) TOTAL NUMBER OF ELIGIBLE FAMILIES RECEIVING EMERGENCY ASSISTANCE PAYMENTS BY COUNTY (UNDUPLICATED CASES) FOR OCTOBER 2019

County	TOTAL	%	Temp	Motel	Shelter/Transitional	Other	SSI
	WFNJ/EA Families (Undupl)	CHNG From OCT 18	Rent Asst. Payments (Undupl)	Housing Payments (Undupl)	Housing Payments (Undupl)	WFNJ/EA Payments (Undupl)	Recipients Receiving EA **
ATLANTIC	102	8.5%	75	11	0	29	93
BERGEN	63	28.6%	26	0	25	25	15
BURLINGTON	109	9.0%	12	22	74	10	36
CAMDEN	69	-22.5% *	18	15	29	20	22
CAPE MAY	24	140.0% Δ	14	11	0	3	7
CUMBERLAND	2	-66.7% *	0	0	1	1	1
ESSEX	285	30.7%	85	0	170	56	13
GLOUCESTER	38	111.1% Δ	9	2	13	22	10
HUDSON	214	4.9%	138	7	38	82	67
HUNTERDON	6	100.0% Δ	5	0	0	2	4
MERCER	121	34.4%	45	34	24	48	85
MIDDLESEX	145	10.7%	53	60	10	74	36
MONMOUTH	29	0%	2	5	22	4	8
MORRIS	30	20.0%	11	10	3	10	22
OCEAN	84	35.5%	49	27	0	30	18
PASSAIC	285	-1.0%	217	3	39	63	81
SALEM	6	50.0%	0	1	4	2	3
SOMERSET	68	3.0%	35	6	22	24	77
SUSSEX	1	-80.0% *	0	0	0	1	4
UNION	120	3.4%	58	26	30	32	73
WARREN	29	93.3%	12	7	4	11	3
NJ Total	1,830	12.8%	864	247	508	549	678

Δ=higher caseload % change

*=lower caseload % change

** SSI-EA includes pay codes 22 and 24, data is derived from NJ Division of Family Development FAMIS Report #FM430-03A
 WFNJ/EA data is derived from NJ MMIS Shared Data Warehouse.
 Effective July 2013 this data query source was converted to the SDW.

Number WFNJ Families Receiving EA by County OCTOBER 2019

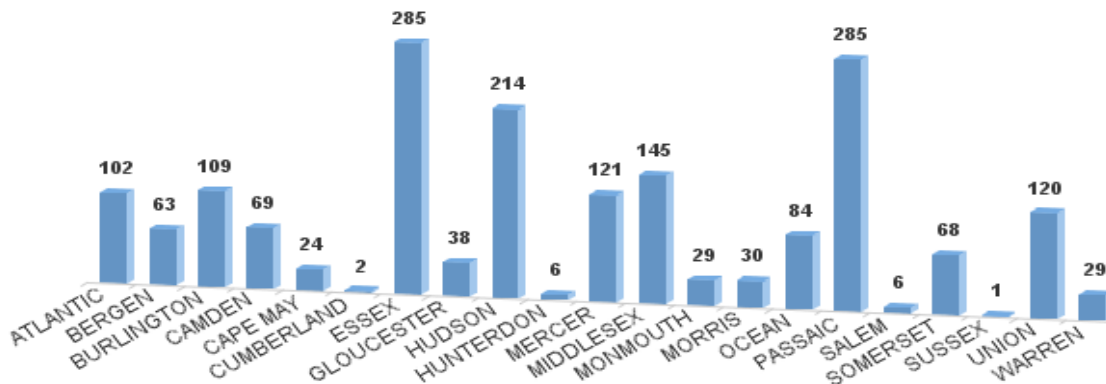
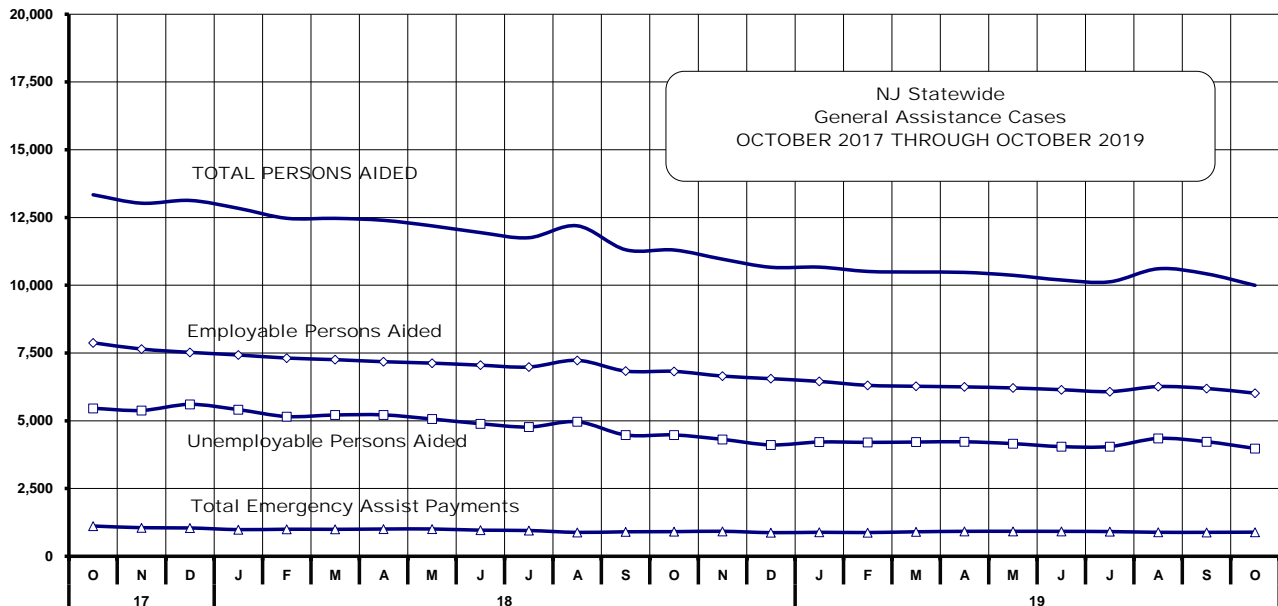


Table 10
GENERAL ASSISTANCE PROGRAM
NUMBER OF EMPLOYABLE AND UNEMPLOYABLE RECIPIENTS AND EMERGENCY ASSISTANCE PAYMENTS FOR OCTOBER 2019 - STATEWIDE
OCTOBER 2017 THROUGH OCTOBER 2019

	Total Cases						Emergency Assistance Cases			
	Employable	% Chng (1 Yr)	Unemployable	% Chng (1 Yr)	Total	% Chng (1 Yr)	Temporary Rental Assistance	Other GA-EA	Total	% Chng (1 Yr)
2017 OCT	5,461	-26.5%	7,878	-14.1%	13,339	-19.6%	1,117	1,148	2,265	-19.2%
NOV	5,382	-24.0%	7,646	-15.9%	13,028	-19.5%	1,055	936	1,991	-26.2%
DEC	5,606	-17.8%	7,524	-15.8%	13,130	-16.7%	1,045	1,059	2,104	-17.5%
2017 AVERAGE	5,932		8,219		14,151		1,178	1,118	2,296	
2018 JAN	5,411	-17.4%	7,428	-15.3%	12,839	-16.2%	984	1,113	2,097	-16.6%
FEB	5,157	-19.8%	7,314	-15.6%	12,471	-17.4%	999	1,069	2,068	-12.9%
MAR	5,214	-19.2%	7,255	-16.6%	12,469	-17.7%	995	1,055	2,050	-15.9%
APR	5,217	-16.8%	7,179	-15.4%	12,396	-16.0%	1,006	1,210	2,216	-8.1%
MAY	5,065	-17.0%	7,127	-15.2%	12,192	-16.0%	1,008	1,151	2,159	-10.3%
JUN	4,892	-18.9%	7,052	-15.6%	11,944	-16.9%	963	1,053	2,016	-16.2%
JUL	4,770	-15.9%	6,984	-14.6%	11,754	-15.1%	951	1,066	2,017	-7.4%
AUG	4,964	-13.7%	7,230	-11.0%	12,194	-12.1%	882	1,122	2,004	-14.2%
SEP	4,476	-18.0%	6,834	-13.5%	11,310	-15.3%	904	1,054	1,958	-8.2%
OCT	4,478	-18.0%	6,823	-13.4%	11,301	-15.3%	909	1,079	1,988	-12.2%
NOV	4,314	-19.8%	6,649	-13.0%	10,963	-15.9%	923	998	1,921	-3.5%
DEC	4,110	-26.7%	6,554	-12.9%	10,664	-18.8%	872	1,007	1,879	-10.7%
2018 AVERAGE	4,839		7,036		11,875		950	1,081	2,031	
2019 JAN	4,216	-22.1%	6,453	-13.1%	10,669	-16.9%	886	1,018	1,904	-9.2%
FEB	4,203	-18.5%	6,307	-13.8%	10,510	-15.7%	876	1,023	1,899	-8.2%
MAR	4,215	-19.2%	6,273	-13.5%	10,488	-15.9%	904	1,077	1,981	-3.4%
APR	4,225	-19.0%	6,250	-12.9%	10,475	-15.5%	921	1,244	2,165	-2.3%
MAY	4,157	-17.9%	6,211	-12.9%	10,368	-15.0%	922	1,923	2,845	31.8%
JUN	4,047	-17.3%	6,147	-12.8%	10,194	-14.7%	920	1,166	2,086	3.5%
JUL	4,050	-15.1%	6,077	-13.0%	10,127	-13.8%	912	1,082	1,994	-1.1%
AUG	4,348	-12.4%	6,261	-13.4%	10,609	-13.0%	885	1,210	2,095	4.5%
SEP	4,228	-5.5%	6,193	-9.4%	10,421	-7.9%	884	1,275	2,159	10.3%
OCT	3,980	-11.1%	6,017	-11.8%	9,997	-11.5%	890	1,319	2,209	11.1%
2019 AVG to date	4,167		6,219		10,386		900	1,234	2,134	



Source: NJ Division of Family Development, GA Fiscal Unit

TABLE 11

GENERAL
ASSISTANCE
PROGRAM**EMPLOYABLE AND UNEMPLOYABLE CASES
AND EMERGENCY ASSISTANCE CASES RECEIVING PAYMENTS BY COUNTY**

OCTOBER 2019

County	Total Cases					Emergency Assistance Cases				
	Employable	% Chng (From Oct 18)	Unemployable	% Chng (From Oct 18)	Total	% Chng (From Oct 18)	Temporary Rental Assist.	Other GA-EA	Total	% Chng (From Oct 18)
ATLANTIC	362	-16.8%	264	-19.8%	626	-18.1%	73	39	112	-13.2%
BERGEN	215	-6.1%	356	-30.2%	571	-22.7% *	107	31	138	-7.4%
BURLINGTON	181	-12.6%	351	-16.0%	532	-14.9%	30	169	199	35.4%
CAMDEN	425	-15.2%	643	-13.6%	1,068	-14.2%	53	108	161	-4.7%
CAPE MAY	66	24.5%	67	-16.3%	133	0.0%	16	38	54	22.7%
CUMBERLAND	178	-11.4%	208	-17.8%	386	-15.0%	1	13	14	27.3%
ESSEX	701	-11.0%	497	3.5%	1,198	-5.5%	39	147	186	12.0%
GLOUCESTER	107	-15.1%	203	-10.6%	310	-12.2%	11	35	46	-14.8% *
HUDSON	348	-14.7%	713	-19.5%	1,061	-18.0%	79	67	146	9.0%
HUNTERDON	73	19.7%	83	33.9%	156	26.8% Δ	14	32	46	43.8%
MERCER	144	-28.4%	417	-14.4%	561	-18.5% *	38	39	77	-17.2% *
MIDDLESEX	186	-13.9%	379	-9.5%	565	-11.0%	83	138	221	-6.0%
MONMOUTH	70	-26.3%	200	9.3%	270	-2.9%	0	42	42	100.0% Δ
MORRIS	101	-23.5%	189	-15.6%	290	-18.5% *	72	42	114	32.6%
OCEAN	207	25.5%	295	-0.3%	502	8.9%	53	116	169	28.0%
PASSAIC	130	-17.2%	548	-10.7%	678	-12.1%	82	18	100	-18.7% *
SALEM	25	-28.6%	66	-13.2%	91	-18.0%	3	3	6	20.0%
SOMERSET	87	19.2%	82	5.1%	169	11.9% Δ	37	50	87	67.3% Δ
SUSSEX	50	31.6%	46	39.4%	96	35.2% Δ	0	31	31	63.2% Δ
UNION	219	-17.0%	297	-6.6%	516	-11.3%	83	121	204	34.2%
WARREN	105	12.9%	113	6.6%	218	9.5%	16	40	56	60.0%
NJ TOTAL	3,980	-11.1%	6,017	-11.8%	9,997	-11.5%	890	1,319	2,209	11.1%

Δ = ↑ Caseload %

* = ↓ Caseload %

Source: NJ Division of Family Development, GA Fiscal Unit

TABLE 12
OFFICE OF CHILD
SUPPORT
SERVICES

OFFICE OF CHILD SUPPORT SERVICES

Quarterly Performance Report

State Summary

TITLE IV-D SOURCE COLLECTION REPORT

Comparison of Quarter-4 (FFY 18 vs. FFY 19)

COLLECTION SOURCE	TOTAL 7/1/2018 - 9/30/2018	% OF TOTAL COLLECTIONS	TOTAL 7/1/2019 - 9/30/2019	% OF TOTAL COLLECTIONS	DOLLAR CHANGE	% CHANGE
FEDERAL TAX	\$ 1,479,724	0.50%	\$ 1,869,980	0.61%	\$ 390,256	26.37%
STATE TAX	\$ 2,167,780	0.73%	\$ 2,331,443	0.77%	\$ 163,663	7.55%
UIB	\$ 6,126,839	2.05%	\$ 6,507,378	2.14%	\$ 380,539	6.21%
INC WITHHOLD	\$ 209,595,891	70.23%	\$ 213,858,362	70.26%	\$ 4,262,471	2.03%
FROM OTHER STATES	\$ 11,861,017	3.97%	\$ 11,955,752	3.93%	\$ 94,735	0.80%
ADMIN ENFORCEMENT	\$ 3,683,272	1.23%	\$ 4,430,431	1.46%	\$ 747,159	20.29%
OTHER	\$ 63,547,795	21.29%	\$ 63,439,467	20.84%	\$ (108,328)	-0.17%
TOTAL COLLECTIONS*	\$ 298,462,318	100%	\$ 304,392,813	100%	\$ 5,930,495	1.99%
DISBURSED COLLECTIONS**	\$ 266,215,508		\$ 269,216,031		\$ 3,000,523	1.13%

* Includes collections on both current support and arrears.

** Includes collections on both current support and arrears; also includes money sent to other states.

SOURCE: NJKiDS (Based on Federal Quarterly Report of Collections - OCSE-34A except Disbursed Collections)
Disbursed Collections obtained from Federal Data Report - OCSE-157, which is reported annually to Congress and used in the calculation of incentive dollars earned by each state.

TABLE 13

OFFICE OF CHILD
SUPPORT SERVICES**OFFICE OF CHILD SUPPORT SERVICES**

State Summary

TITLE IV-D PATERNITY ESTABLISHMENT REPORT

Comparison of October (FFY 18 vs. FFY 19)

County Office	OCTOBER 2018			OCTOBER 2019			Increase or Decrease (-) from FFY 2018 to FFY 2019
	Total Children Born Out of Wedlock*	Number of Paternities Established	Percent of Paternities Established	Total Children Born Out of Wedlock*	Number of Paternities Established	Percent of Paternities Established	
Atlantic	7,132	7,035	98.6%	6,677	6,611	99.0%	0.4%
Bergen	3,474	3,418	98.4%	3,299	3,247	98.4%	0.0%
Burlington	5,822	5,633	96.8%	5,270	5,106	96.9%	0.1%
Camden	17,813	17,107	96.0%	16,202	15,730	97.1%	1.1%
Cape May	1,420	1,398	98.5%	1,318	1,302	98.8%	0.3%
Cumberland	7,188	7,107	98.9%	6,806	6,730	98.9%	0.0%
Essex	28,904	27,028	93.5%	26,598	24,979	93.9%	0.4%
Gloucester	5,012	4,934	98.4%	4,665	4,589	98.4%	-0.1%
Hudson	11,826	11,106	93.9%	10,747	10,244	95.3%	1.4%
Hunterdon	323	320	99.1%	292	294	100.7%	1.6%
Mercer	8,166	7,842	96.0%	7,584	7,322	96.5%	0.5%
Middlesex	7,298	7,080	97.0%	6,757	6,561	97.1%	0.1%
Monmouth	6,151	5,888	95.7%	5,696	5,468	96.0%	0.3%
Morris	1,457	1,439	98.8%	1,354	1,333	98.4%	-0.3%
Ocean	5,333	5,183	97.2%	5,014	4,883	97.4%	0.2%
Passaic	12,631	11,916	94.3%	11,161	10,624	95.2%	0.8%
Salem	2,859	2,774	97.0%	2,804	2,713	96.8%	-0.3%
Somerset	1,701	1,644	96.6%	1,527	1,489	97.5%	0.9%
Sussex	634	625	98.6%	577	574	99.5%	0.9%
Union	11,134	10,540	94.7%	10,564	10,035	95.0%	0.3%
Warren	1,041	1,034	99.3%	987	975	98.8%	-0.5%
NJ TOTALS	147,319	141,051	95.7%	135,899	130,809	96.3%	0.5%

SOURCE: NJKiDS (Based on Federal Performance Measures - OCSE-157)

* Information on Out of Wedlock Births obtained from NJ Bureau of Vital Statistics

TABLE 14

OFFICE OF CHILD
SUPPORT SERVICES

OFFICE OF CHILD SUPPORT SERVICES

State Summary

TITLE IV-D REPORT OF CASES WITH ORDERS

Comparison of October (FFY 18 vs. FFY 19)

County Office	OCTOBER 2018			OCTOBER 2019			Increase or Decrease (-) from FFY 2018 to FFY 2019
	TOTAL CASES	CASES WITH ORDERS	% OF CASES WITH ORDERS	TOTAL CASES	CASES WITH ORDERS	% OF CASES WITH ORDERS	
Atlantic	12,806	11,242	87.8%	12,179	10,923	89.7%	1.9%
Bergen	12,167	11,761	96.7%	11,907	11,444	96.1%	-0.6%
Burlington	14,543	12,713	87.4%	13,514	12,251	90.7%	3.2%
Camden	30,748	26,778	87.1%	28,450	26,357	92.6%	5.6%
Cape May	3,240	2,933	90.5%	3,128	2,856	91.3%	0.8%
Cumberland	12,402	11,747	94.7%	12,049	11,417	94.8%	0.0%
Essex	45,950	36,833	80.2%	43,241	35,582	82.3%	2.1%
Gloucester	10,955	10,429	95.2%	10,637	10,127	95.2%	0.0%
Hudson	22,900	18,468	80.6%	21,267	17,926	84.3%	3.6%
Hunterdon	1,485	1,422	95.8%	1,453	1,372	94.4%	-1.3%
Mercer	14,798	13,074	88.3%	14,075	12,622	89.7%	1.3%
Middlesex	18,144	16,879	93.0%	17,450	16,359	93.7%	0.7%
Monmouth	15,100	14,247	94.4%	14,295	13,631	95.4%	1.0%
Morris	6,086	5,914	97.2%	5,890	5,743	97.5%	0.3%
Ocean	15,290	14,550	95.2%	14,795	14,083	95.2%	0.0%
Passaic	23,680	17,697	74.7%	21,435	17,009	79.4%	4.6%
Salem	4,466	4,274	95.7%	4,336	4,133	95.3%	-0.4%
Somerset	5,074	4,755	93.7%	4,712	4,423	93.9%	0.2%
Sussex	2,805	2,712	96.7%	2,653	2,582	97.3%	0.6%
Union	18,925	17,674	93.4%	18,301	17,199	94.0%	0.6%
Warren	3,067	2,839	92.6%	3,049	2,822	92.6%	0.0%
NJ TOTALS	294,631	258,941	87.9%	278,816	250,861	90.0%	2.1%

SOURCE: NJKiDS (Based on Federal Performance Measures - OCSE-157)

TABLE 15

OFFICE OF CHILD
SUPPORT SERVICES

OFFICE OF CHILD SUPPORT SERVICES

State Summary

**TITLE IV-D COLLECTIONS ON CURRENT SUPPORT
Comparison of October (FFY 18 vs. FFY 19)**

County Office	OCTOBER 2018			OCTOBER 2019			Increase or Decrease (-) from FFY 2018 to FFY 2019
	Total Current Support Due	Total Current Support Distributed	Total Collection Rate	Total Current Support Due	Total Current Support Distributed	Total Collection Rate	
Atlantic	\$3,892,367	\$2,633,305	67.7%	\$3,845,504	\$2,592,168	67.4%	-0.2%
Bergen	\$8,838,178	\$6,892,006	78.0%	\$8,666,561	\$6,680,388	77.1%	-0.9%
Burlington	\$6,073,064	\$4,353,332	71.7%	\$5,901,159	\$4,146,438	70.3%	-1.4%
Camden	\$8,233,501	\$5,048,318	61.3%	\$8,112,976	\$4,979,854	61.4%	0.1%
Cape May	\$1,111,813	\$789,215	71.0%	\$1,108,218	\$774,006	69.8%	-1.1%
Cumberland	\$3,168,154	\$1,934,514	61.1%	\$3,150,016	\$1,891,881	60.1%	-1.0%
Essex	\$11,365,700	\$6,944,438	61.1%	\$10,989,841	\$6,698,231	60.9%	-0.2%
Gloucester	\$4,370,697	\$2,987,377	68.4%	\$4,297,848	\$2,925,253	68.1%	-0.3%
Hudson	\$7,371,256	\$5,166,018	70.1%	\$7,364,599	\$5,107,829	69.4%	-0.7%
Hunterdon	\$1,292,280	\$1,063,439	82.3%	\$1,239,644	\$1,010,228	81.5%	-0.8%
Mercer	\$4,348,549	\$2,784,533	64.0%	\$4,233,100	\$2,691,411	63.6%	-0.5%
Middlesex	\$8,156,826	\$5,797,132	71.1%	\$7,897,245	\$5,543,971	70.2%	-0.9%
Monmouth	\$7,781,511	\$5,775,496	74.2%	\$7,468,620	\$5,566,829	74.5%	0.3%
Morris	\$4,731,022	\$3,576,713	75.6%	\$4,520,348	\$3,447,591	76.3%	0.7%
Ocean	\$6,982,074	\$5,152,169	73.8%	\$6,770,450	\$4,993,339	73.8%	0.0%
Passaic	\$6,827,479	\$4,514,927	66.1%	\$6,637,379	\$4,331,514	65.3%	-0.9%
Salem	\$1,146,580	\$718,062	62.6%	\$1,134,760	\$688,844	60.7%	-1.9%
Somerset	\$3,313,708	\$2,727,853	82.3%	\$3,116,515	\$2,563,911	82.3%	-0.1%
Sussex	\$1,899,113	\$1,503,070	79.1%	\$1,827,695	\$1,470,564	80.5%	1.3%
Union	\$7,095,153	\$5,011,984	70.6%	\$7,023,025	\$4,882,015	69.5%	-1.1%
Warren	\$1,399,505	\$1,057,268	75.5%	\$1,337,143	\$990,133	74.0%	-1.5%
NJ TOTALS	\$109,398,528	\$76,431,170	69.9%	\$106,642,645	\$73,976,398	69.4%	-0.5%

SOURCE: NJKiDS (Based on Federal Performance Measures - OCSE-157)

TABLE 16
OFFICE OF CHILD
SUPPORT SERVICES

OFFICE OF CHILD SUPPORT SERVICES

State Summary

TITLE IV-D CASES ARREARS COLLECTION REPORT

Comparison of October (FFY 18 vs. FFY 19)

County Office	OCTOBER 2018			OCTOBER 2019			Increase or Decrease (-) from FFY 2018 to FFY 2019
	Total Cases with Arrears	Total Amount Collected	Average Arrears Collection per Case	Total Cases with Arrears	Total Amount Collected	Average Arrears Collection per Case	
Atlantic	7,531	\$667,854	\$88.68	7,216	\$806,068	\$111.71	\$23.03
Bergen	7,699	\$1,265,321	\$164.35	7,420	\$1,070,515	\$144.27	-\$20.07
Burlington	8,501	\$952,514	\$112.05	8,181	\$971,964	\$118.81	\$6.76
Camden	17,514	\$1,332,866	\$76.10	16,654	\$1,395,009	\$83.76	\$7.66
Cape May	2,062	\$244,549	\$118.60	1,973	\$180,790	\$91.63	-\$26.97
Cumberland	7,801	\$491,355	\$62.99	7,477	\$483,930	\$64.72	\$1.74
Essex	23,378	\$2,421,102	\$103.56	22,460	\$2,254,190	\$100.36	-\$3.20
Gloucester	7,149	\$743,366	\$103.98	6,838	\$693,227	\$101.38	-\$2.60
Hudson	12,894	\$1,360,640	\$105.53	12,380	\$1,244,348	\$100.51	-\$5.01
Hunterdon	913	\$166,586	\$182.46	838	\$146,136	\$174.39	-\$8.07
Mercer	8,734	\$803,757	\$92.03	8,452	\$802,448	\$94.94	\$2.92
Middlesex	11,397	\$1,396,466	\$122.53	10,954	\$1,129,280	\$103.09	-\$19.44
Monmouth	9,181	\$1,281,407	\$139.57	8,718	\$1,053,645	\$120.86	-\$18.71
Morris	4,072	\$713,230	\$175.15	3,871	\$569,923	\$147.23	-\$27.93
Ocean	9,694	\$1,073,130	\$110.70	9,210	\$1,118,385	\$121.43	\$10.73
Passaic	11,948	\$1,239,927	\$103.78	11,519	\$1,166,263	\$101.25	-\$2.53
Salem	2,725	\$206,191	\$75.67	2,538	\$209,918	\$82.71	\$7.04
Somerset	3,237	\$491,302	\$151.78	2,960	\$404,447	\$136.64	-\$15.14
Sussex	1,847	\$375,539	\$203.32	1,714	\$225,434	\$131.53	-\$71.80
Union	11,815	\$1,538,256	\$130.20	11,378	\$1,366,362	\$120.09	-\$10.11
Warren	1,847	\$208,461	\$112.86	1,762	\$168,577	\$95.67	-\$17.19
NJ TOTALS	171,939	\$18,973,819	\$110.35	164,513	\$17,460,859	\$106.14	-\$4.22

SOURCE:OCSE-157 Child Support Enforcement Annual Data Report

Table 17
WFNJ

WORK FIRST NEW JERSEY STATISTICAL SUMMARY

OCTOBER 2019

COUNTY	EMPLOYMENT DIRECTED ACTIVITIES			EMPLOYED OPEN (WFNJ RECIPIENT)	SUPPORT SERVICES ON ACTIVE CASE		CLOSED FOR EMPLOYMENT THIS MONTH	POST ASSISTANCE CHILD CARE
	CWEP	ALL OTHER TRAINING	JOB SEARCH		CHILD CARE	TRAINING REL. EXPENSES		
	ATLANTIC	37	75		19	56		
BERGEN	74	12	42	14	60	43	5	5
BURLINGTON	36	15	46	63	59	55	4	77
CAMDEN	133	175	5	140	172	116	13	76
CAPE MAY	6	17	6	11	9	10	0	4
CUMBERLAND	56	61	51	25	30	73	6	24
ESSEX	298	332	20	280	352	396	24	269
GLOUCESTER	16	14	8	38	18	18	5	31
HUDSON	121	210	37	126	347	279	21	84
HUNTERDON	0	0	4	1	2	0	0	0
MERCER	70	109	75	85	121	100	11	70
MIDDLESEX	29	17	59	50	58	42	16	63
MONMOUTH	23	13	11	30	27	22	2	49
MORRIS	7	7	18	19	12	6	2	5
OCEAN	4	95	0	14	20	25	3	35
PASSAIC	173	138	10	68	170	139	11	30
SALEM	16	12	18	15	9	13	1	4
SOMERSET	45	18	10	31	35	40	3	16
SUSSEX	5	0	0	4	0	0	0	2
UNION	136	41	2	44	66	81	6	31
WARREN	9	12	6	26	11	2	2	14
STATE	1,294	1,373	447	1,140	1,598	1,610	140	948

Data is derived from NJ Division of Family Development's FAMIS Reports RM064-01 & RM703-51, AdHoc Reports 5549 & 5598 and SDW Report WR00022WZ_CC

**DIVISION OF FAMILY DEVELOPMENT CURRENT PROGRAM STATISTICS
OCTOBER 2019**

ACRONYMS

EMERGENCY ASSISTANCE (EA) - Payments to those eligible for WFNJ/TANF or WFNJ/GA, authorized during the 30 consecutive days immediately following the emergency (defined as a substantial loss of shelter, food, clothing, or household furnishings by fire, flood or other similar disaster) or if eligible individual or family is in an imminent or actual state of homelessness.

NJ SNAP - Formerly the Food Stamp Program, now known as **NJ SNAP** (NJ Supplemental Nutrition Assistance Program) authorized by Congress as a nutritional supplement program to provide low income households with more food of greater variety and better nutrition. Program eligibility is based on household income, resources, and expenses for medical, shelter, and dependent care. CWA staff refers certain recipients to the New Jersey Department of Labor for participation in the Food Stamp Employment and Training Program.

FAMIS: Family Assistance Management Information System

GAAS: General Assistance Automated System

NJKiDS: New Jersey Kids Deserve Support (Child Support Information Management System)

NJ MMIS SHARED DATA WAREHOUSE: The Shared Data Warehouse (SDW) is the repository for New Jersey's DFD and Medicaid data. Since 2003, OptumInsight has administered the SDW and provided access to the data through a reporting tool known as Business Objects.

OMEGA: Online Management of Economic Goal Achievement

SSI-EA: Supplemental Security Income-Emergency Assistance

WFNJ: Work First New Jersey - Fully implemented July 1, 1997, this is New Jersey's welfare reform program which responds to the requirements of the Federal Personal Responsibility and Work Opportunity Reconciliation Act (**PRWORA**) of 1996. PRWORA established Temporary Assistance for Needy Families (**TANF**) as the replacement for AFDC cash assistance. WFNJ includes two segments, **WFNJ/TANF** for families with children, and **WFNJ/GA** (General Assistance) for single adults and couples without dependent children. WFNJ emphasizes achieving self-sufficiency and limits lifetime receipt of financial assistance to a total of five years.

**DIVISION OF FAMILY DEVELOPMENT CURRENT PROGRAM STATISTICS
OCTOBER 2019**

EXPLANATORY NOTES

The Department of Human Services Division of Family Development provides basic income and an opportunity to achieve self-sufficiency for individuals and families served by the Division's programs. The Division provides leadership, direction and supervision to those public agencies responsible for administering those programs and plans for and develops policies to promote self-sufficiency.

WFNJ Statistical Summary (Table 17)

Employment Directed Activities (EDA) - From Activities Summary Report (OMEGA report # RM064). Unduplicated count of persons participating in Community Work Experience Program (CWEP), All Other Training, or Job Search.

Number of Persons Employed This Month, Still Receiving TANF Individuals with open "empl" activity on OMEGA. Ad hoc report.

Participants Receiving Child Care Services - From Issuance Disbursement Summary (OMEGA report # RM703). Total number of active participants who show receipt of **Child Care**.

Number of Persons Closed on FAMIS Due to Employment - From FAMIS report #5549-RM-2.

Post TANF and Receiving Child Care - Persons no longer in receipt of TANF but still receiving child care. From Share Data Warehouse Child Care case count based on Child Care payments (SDW report WR00022WZ_CC).