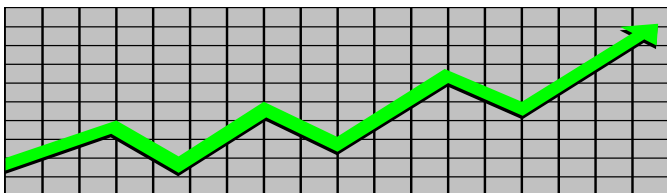


State of New Jersey  
Department of Human Services  
Division of Family Development

---

# CURRENT PROGRAM STATISTICS



---

**September 2017**  
**Natasha Johnson, Director**

**DIVISION OF FAMILY DEVELOPMENT CURRENT PROGRAM STATISTICS  
SEPTEMBER 2017**

**TABLE OF CONTENTS**

**HIGHLIGHTS:**

<b>WFNJ/TANF.....</b>	<b>ii</b>
<b>NJ SNAP.....</b>	<b>ii</b>
<b>EMERGENCY ASSISTANCE.....</b>	<b>ii</b>
<b>GENERAL ASSISTANCE.....</b>	<b>iii</b>
GA Emergency Assistance.....	iii
GA Program.....	iii
<b>CHILD SUPPORT SERVICES.....</b>	<b>iii</b>
<b>WORK FIRST NEW JERSEY (WFNJ).....</b>	<b>iii</b>
<b>STATISTICS- BY STATE &amp; COUNTY.....</b>	<b>1</b>
Table 1: WFNJ/TANF Families & Persons (NJ Statewide) September 2015 to 2017.....	1
Table 2: WFNJ/TANF Families (by County)- September 2017.....	2
Table 2B: WFNJ/TANF Persons, Adults, & Children (by County)- September 2017.....	3
Table 3: TANF Work Participation Rates Over 12 Month Period (by County)- September 2017....	4
Table 4: TANF Work Participation Rates Over 12 Month Period (NJ Statewide) September 2017	5
Table 5: NJ SNAP Households/Persons (NJ Statewide) September 2015 to 2017.....	6
Table 6: NJ SNAP Recipient Trends (NJ Statewide) September 2015 to 2017.....	7
Table 7: NJ SNAP Households/Persons (by County)- September 2017.....	8
Table 8: Emergency Assistance Program (NJ Statewide) September 2015 to 2017.....	9
Table 9: Emergency Assistance Program (by County)- September 2017.....	10
Table 10: General Assistance Program (NJ Statewide) September 2015 to 2017.....	11
Table 11: General Assistance Program (by County)- September 2017.....	12
Table 12: Child Support Services Distributions (NJ Statewide) FFY 2017.....	13
Table 13: Child Support Services Paternities Established- September 2017.....	14
Table 14: Child Support Services Cases With Orders- September 2017.....	15
Table 15: Child Support Services Collections On Current Support- September 2017.....	16
Table 16: Child Support Services Cases With Payments On Arrears- September 2017.....	17
Table 17: WFNJ Statistical Summary- September 2017.....	18
<b>ACRONYMS.....</b>	<b>19</b>
<b>EXPLANATORY NOTES.....</b>	<b>20</b>
WFNJ Statistical Summary (Table 17).....	20

**DIVISION OF FAMILY DEVELOPMENT CURRENT PROGRAM STATISTICS  
SEPTEMBER 2017**

---

Each month the Division of Family Development publishes its program statistics for: WFNJ/TANF, NJ SNAP, Emergency Assistance, General Assistance, and Child Support Services. When possible, information is provided separately for children and adults. Many tables also provide trend data with information broken down by county for readers to consider. This report is compiled and prepared by The Bureau of Research & Reporting.

---

**WFNJ/TANF**

- As of the end of September, the TANF caseload had decreased by 4,832 cases, from 20,441 in September 2016 to 15,609 in September 2017, a decrease of 23.6%.
- The counties with caseloads that decreased the most since September 2016 were Union (-33.0%), Bergen (-37.6%) and Cape May (-43.1%) .
- Of the WFNJ/TANF cases, 4,963 or 31.8% were child-only in September 2017.
- The counties with the most child-only cases were Essex (755), Camden (738) and Passaic (508).
- Essex (6,945), Camden (5,130), Passaic (5,082), Hudson (4,568) and Atlantic (2,969) counties had the greatest number of persons receiving TANF in September 2017.

**NJ SNAP (formerly FOOD STAMPS)**

- In September 2017, there were 390,501 households receiving NJ SNAP benefits. The number of NJ SNAP households decreased by 33,254 or 7.8%, since September 2016.
- There were 778,980 persons receiving NJ SNAP benefits as of September 2017, a decrease of 66,198 or 7.8% since September 2016.
- The county that showed a percent increase for NJ SNAP benefits as of September 2017, was Warren (0.1%).
- The counties having the highest caseload decrease since September 2016 are Cape May (-10.9%), Union (-11.0%) and Burlington (-12.2%).

**EMERGENCY ASSISTANCE**

- There were 1,878 families receiving Emergency Assistance (EA) in September 2017, a decrease of 872 or 31.7% since September 2016.
- In September 2017, EA payments were made for 436 SSI recipients.

**DIVISION OF FAMILY DEVELOPMENT CURRENT PROGRAM STATISTICS  
SEPTEMBER 2017**

**GENERAL ASSISTANCE**

**GA Emergency Assistance**

- There were 2,134 Emergency Assistance payments made to GA cases in September 2017, a decrease of 498 or 18.9% since September 2016.
- The counties that showed the highest percent increase in emergency assistance payments were Warren (33.3%), Gloucester (39.1%) and Sussex (66.7%).
- The counties that showed the highest percent decrease in emergency assistance payments were Morris (-36.0%), Mercer (-37.3%) and Cumberland (-61.0%).

**GA Program**

- The total numbers of cases receiving GA has decreased from 16,701 to 13,360 since September 2016, a decrease of 20.0%.
- There were 5,458 Employable GA and 7,902 Unemployable GA cases in September 2017.
- The counties that showed a percent increase for GA cases were Monmouth (6.0%) and Cape May (7.0%) since September 2016.
- The counties that showed the highest percent decrease for GA cases since September 2016 were Morris (-27.3%), Passaic (-30.6%) and Salem (-32.3%).
- In September 2017, GA cases showed a 3.7 percent decrease since August 2017.

**CHILD SUPPORT SERVICES (Quarterly Report)**

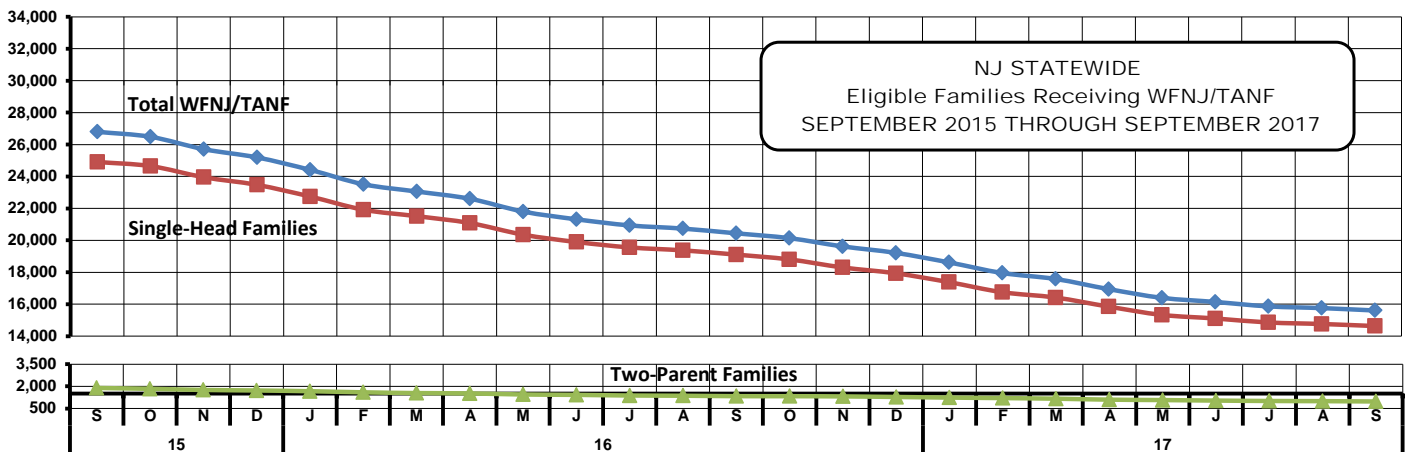
- The total collection for the Child Support Services Program was about \$303 million from July 2017 to September 2017, a decrease of 5.3 percent over the same period for FFY 2016.
- Total distributions decreased 8.2% from September 2016.

**WORK FIRST NEW JERSEY (WFNJ)**

- During the report month of September 2017, there were 1,573 families in which at least one member was employed and an additional 300 families whose WFNJ assistance cases were closed due to employment - related earnings.
- The three counties with the greatest number of employed active WFNJ recipients were: Essex (340), Camden (229) and Hudson (169).
- There were 2,226 former TANF cases receiving post-TANF support in the form of child care assistance.

**TABLE 1: WFNJ/TANF PROGRAM**  
**STATEWIDE NUMBER OF APPLICATIONS AND TERMINATIONS DURING SEPTEMBER 2017**  
**NUMBER OF ELIGIBLE FAMILIES & PERSONS RECEIVING WFNJ/TANF FOR SEPTEMBER 2017**

		SEPTEMBER 2015 THROUGH SEPTEMBER 2017										
		Cases Added	Cases Closed	Child-Only Cases ‡	Total Singl-Head Families	2- Parent Families	Total WFNJ/TANF Families	%CHNG (1 Yr.)	Total Persons	%CHNG (1 Yr.)	Adults	Children
<b>2015</b>	SEP	2,263	2,767	6,787	24,908	1,888	26,796	(19.8)	68,235	(21.0)	21,897	46,338
	OCT	2,505	2,908	6,768	24,652	1,832	26,484	(20.8)	67,259	(22.1)	21,548	45,711
	NOV	1,888	2,665	6,696	23,955	1,754	25,709	(21.9)	65,212	(23.3)	20,767	44,445
	DEC	2,029	2,647	6,690	23,476	1,719	25,195	(22.3)	63,676	(24.0)	20,224	43,452
<b>2015 Average</b>		<b>2,161</b>	<b>2,831</b>	<b>7,039</b>	<b>26,179</b>	<b>2,059</b>	<b>28,238</b>		<b>72,179</b>		<b>23,258</b>	<b>48,921</b>
<b>2016</b>	JAN	1,774	2,617	6,569	22,745	1,669	24,414	(23.2)	61,590	(24.8)	19,514	42,076
	FEB	1,663	2,558	6,479	21,919	1,594	23,513	(24.3)	58,994	(26.1)	18,628	40,366
	MAR	1,922	2,516	6,469	21,516	1,543	23,059	(23.9)	57,608	(26.1)	18,133	39,475
	APR	1,788	2,363	6,357	21,085	1,520	22,605	(23.4)	56,458	(25.5)	17,768	38,690
	MAY	1,763	2,568	6,216	20,357	1,446	21,803	(24.5)	54,214	(26.7)	17,033	37,181
	JUN	1,839	2,417	6,094	19,898	1,421	21,319	(24.4)	52,864	(26.8)	16,646	36,218
	JUL	1,938	2,445	5,987	19,558	1,378	20,936	(24.7)	51,942	(26.8)	16,327	35,615
	AUG	1,924	2,146	5,931	19,374	1,363	20,737	(23.7)	51,450	(25.6)	16,169	35,281
	SEP	1,943	2,360	5,912	19,108	1,333	20,441	(23.7)	50,626	(25.8)	15,862	34,764
	OCT	1,701	2,090	5,858	18,807	1,331	20,138	(24.0)	49,962	(25.7)	15,611	34,351
	NOV	1,614	2,222	5,766	18,305	1,317	19,622	(23.7)	48,737	(25.3)	15,173	33,564
	DEC	1,592	2,088	5,762	17,937	1,280	19,217	(23.7)	47,656	(25.2)	14,735	32,921
<b>2016 Average</b>		<b>1,788</b>	<b>2,366</b>	<b>6,117</b>	<b>20,051</b>	<b>1,433</b>	<b>21,484</b>		<b>53,508</b>		<b>16,800</b>	<b>36,709</b>
<b>2017</b>	JAN	1,479	2,069	5,658	17,384	1,236	18,620	(23.7)	46,466	(24.6)	14,198	32,268
	FEB	1,436	2,167	5,591	16,753	1,203	17,956	(23.6)	44,778	(24.1)	13,568	31,210
	MAR	1,440	1,861	5,516	16,420	1,162	17,582	(23.8)	43,992	(23.6)	13,228	30,764
	APR	1,328	2,018	5,416	15,850	1,096	16,946	(25.0)	42,479	(24.8)	12,626	29,853
	MAY	1,295	1,835	5,222	15,332	1,069	16,401	(24.8)	41,214	(24.0)	12,248	28,966
	JUN	1,440	1,750	5,115	15,110	1,034	16,144	(24.3)	40,521	(23.3)	12,063	28,458
	JUL	1,431	1,780	5,042	14,859	1,007	15,866	(24.2)	39,840	(23.3)	11,831	28,009
	AUG	1,446	1,617	5,001	14,764	995	15,759	(24.0)	39,673	(22.9)	11,753	27,920
	SEP	1,525	1,747	4,963	14,635	974	15,609	(23.6)	39,270	(22.4)	11,620	27,650
<b>2017 AVG to date</b>		<b>1,424</b>	<b>1,872</b>	<b>5,280</b>	<b>15,679</b>	<b>1,086</b>	<b>16,765</b>		<b>42,026</b>		<b>12,571</b>	<b>29,455</b>



Data is derived from NJ MMIS Shared Data Warehouse Issuance files.  
 Effective July 2013 this data query source was converted to the SDW

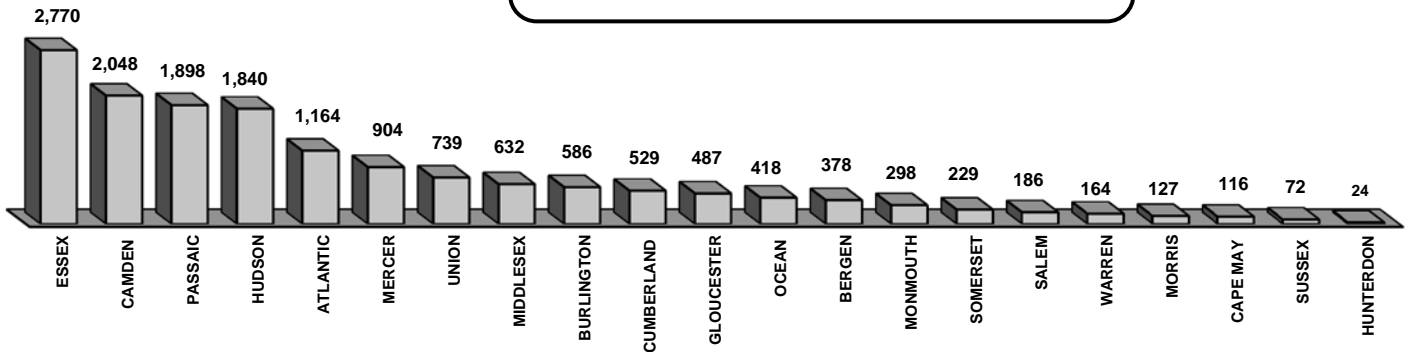
‡ Child-only cases are defined as families in which no eligible adult receives TANF program benefits, yet the family continues to be headed by at least one of the biological parents, or grandparents, or other appropriate adult.

Table 2  
WFNJ/TANF  
PROGRAM

NUMBER OF APPLICATIONS AND TERMINATIONS BY COUNTY DURING SEPTEMBER 2017  
NUMBER OF ELIGIBLE FAMILIES RECEIVING WFNJ/TANF REPORTED FOR SEPTEMBER 2017

County	Cases Added	Cases Closed**	Child-		Total		Total		
			Only Cases ‡	1-Adult Cases	Singl-Head Families	2-Parent Families	WFNJ/TANF Families	% Chng (3 Mon)	% Chng (1 Yr)
ATLANTIC	81	117	395	676	1,071	93	1,164	(6.0)	(14.3)
BERGEN	34	65	97	248	345	33	378	(6.7)	(37.6) *
BURLINGTON	62	59	182	367	549	37	586	(1.8)	(23.8)
CAMDEN	166	208	738	1,196	1,934	114	2,048	(2.2)	(13.5)
CAPE MAY	8	18	46	65	111	5	116	(10.1)	(43.1) *
CUMBERLAND	67	55	197	288	485	44	529	0.4	(26.1)
ESSEX	361	378	755	1,876	2,631	139	2,770	0.5	(28.0)
GLOUCESTER	41	53	172	287	459	28	487	(3.4)	(15.9)
HUDSON	210	192	500	1,223	1,723	117	1,840	2.5	(27.2)
HUNTERDON	4	2	5	18	23	1	24	14.3	(20.0)
MERCER	77	117	339	519	858	46	904	(3.6)	(22.6)
MIDDLESEX	60	79	290	321	611	21	632	(3.7)	(28.3)
MONMOUTH	28	31	122	168	290	8	298	3.1	(9.1)
MORRIS	13	22	36	67	103	24	127	(3.1)	(23.5)
OCEAN	44	49	145	249	394	24	418	(4.1)	(30.3)
PASSAIC	120	138	508	1,279	1,787	111	1,898	(2.5)	(23.3)
SALEM	21	25	66	110	176	10	186	0.5	(2.6) Δ
SOMERSET	30	22	80	138	218	11	229	3.6	(17.3)
SUSSEX	15	5	23	43	66	6	72	12.5	(1.4) Δ
UNION	60	91	218	436	654	85	739	(4.5)	(33.0) *
WARREN	23	21	49	98	147	17	164	2.5	(5.7) Δ
<b>NJ TOTAL</b>	<b>1,525</b>	<b>1,747</b>	<b>4,963</b>	<b>9,672</b>	<b>14,635</b>	<b>974</b>	<b>15,609</b>	<b>(1.6)</b>	<b>(23.6)</b>

Total WFNJ/TANF Families  
SEPTEMBER 2017  
By County



Data is derived from NJ MMIS Shared Data Warehouse Issuance files.  
Effective July 2013 this data query source was converted to the SDW

‡ Child-only cases are defined as families in which no eligible adult receives TANF program benefits, yet the family continues to be headed by at least one of the biological parents, or grandparents, or other appropriate adult

\*\* "Cases closed" include cases that received a benefit in the prior month, but did not receive any TANF benefit for the report month.

"Δ=higher caseload % change

"\*=lower caseload % change

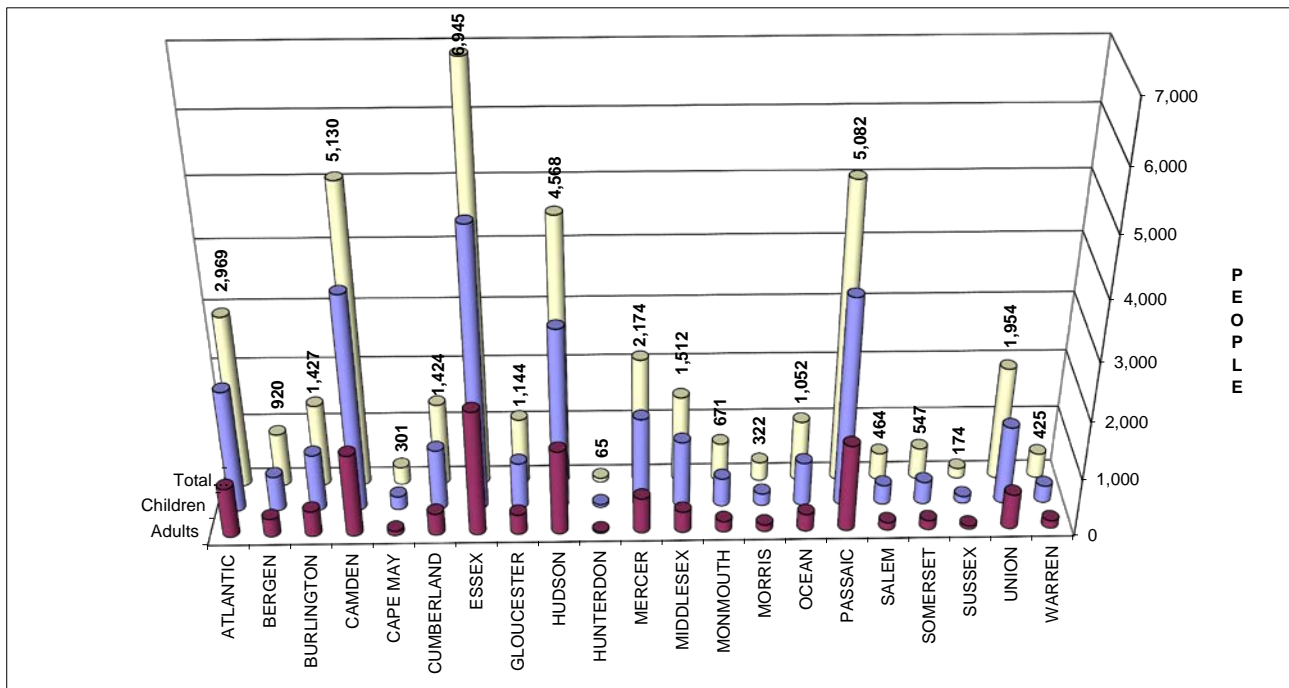
Table 2B  
WFNJ/TANF  
PROGRAM

**NUMBER OF PARTICIPATING PERSONS, ADULTS, AND CHILDREN  
BY COUNTY FOR SEPTEMBER 2017**

Δ= ↑ Caseload %  
\*= ↓ Caseload %

PERSONS

County	Adults	Children	Child/Adult Ratio	Total Persons	% Chng (1 Yr)	Persons Per Case
ATLANTIC	862	2,107	2.44	2,969	(15.4)	2.55
BERGEN	314	606	1.93	920	(34.8) *	2.43
BURLINGTON	441	986	2.24	1,427	(25.2)	2.44
CAMDEN	1,424	3,706	2.60	5,130	(12.1)	2.50
CAPE MAY	75	226	3.01	301	(43.4) *	2.59
CUMBERLAND	376	1,048	2.79	1,424	(25.6)	2.69
ESSEX	2,154	4,791	2.22	6,945	(26.8)	2.51
GLOUCESTER	343	801	2.34	1,144	(19.4)	2.35
HUDSON	1,457	3,111	2.14	4,568	(23.0)	2.48
HUNTERDON	20	45	2.25	65	(32.3)	2.71
MERCER	611	1,563	2.56	2,174	(21.4)	2.40
MIDDLESEX	363	1,149	3.17	1,512	(26.8)	2.39
MONMOUTH	184	487	2.65	671	(15.1)	2.25
MORRIS	115	207	1.80	322	(18.1)	2.54
OCEAN	297	755	2.54	1,052	(32.6) *	2.52
PASSAIC	1,501	3,581	2.39	5,082	(23.1)	2.68
SALEM	130	334	2.57	464	(3.5) Δ	2.49
SOMERSET	160	387	2.42	547	(19.1)	2.39
SUSSEX	55	119	2.16	174	(5.4) Δ	2.42
UNION	606	1,348	2.22	1,954	(25.0)	2.64
WARREN	132	293	2.22	425	(4.1) Δ	2.59
<b>NJ TOTAL</b>	<b>11,620</b>	<b>27,650</b>	<b>2.38</b>	<b>39,270</b>	<b>(22.4)</b>	<b>2.52</b>



Data is derived from NJ MMIS Shared Data Warehouse Issuance files.  
Effective July 2013 this data query source was converted to the SDW

TABLE 3

Work Participation Rates Achieved Over 12 Month Period  
Ending With SEPTEMBER 2017

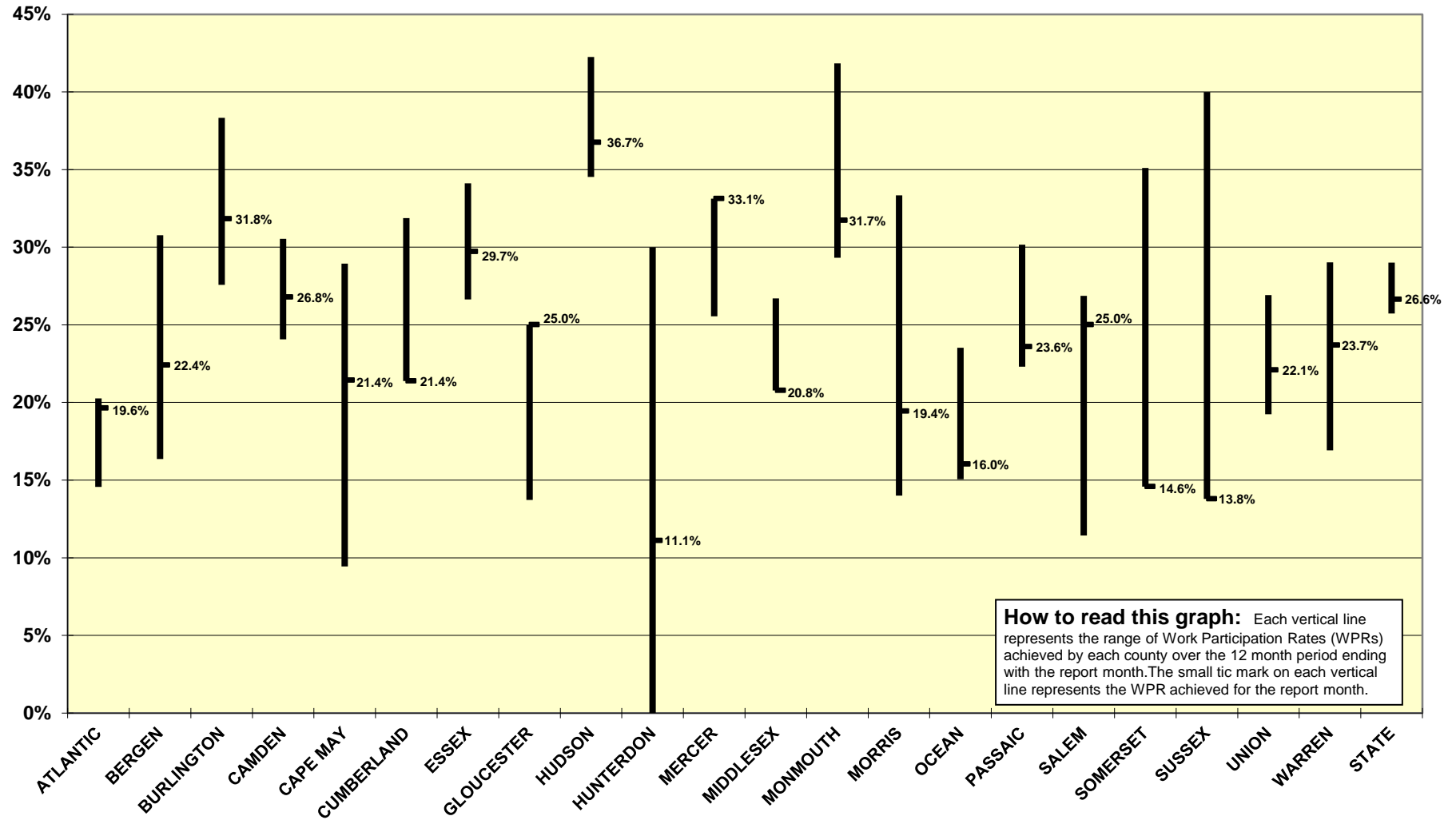
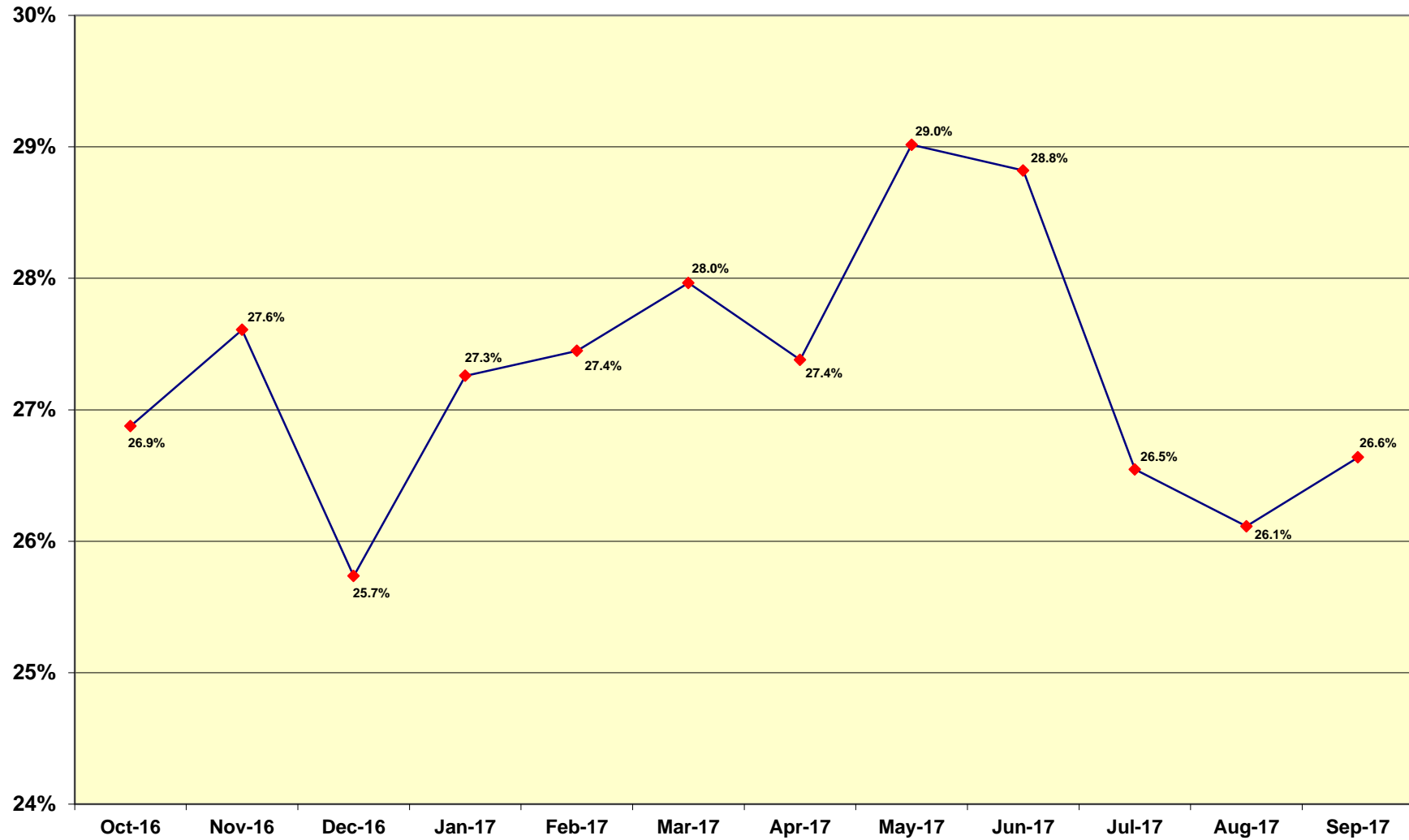




TABLE 4

WFNJ/TANF Work Participation Rates  
for 12-Month Period Ending with SEPTEMBER 2017 Statewide



\* The Work Participation rate measures the number of countable Temporary Assistance for Needy Families (TANF) participants based on federal formula. The reported rate is considered to be preliminary until officially calculated by the federal government soon after the close of each federal fiscal year.

Table 5  
NJ SNAP  
(FOOD STAMPS)

**NUMBER OF PARTICIPATING HOUSEHOLDS, PERSONS, ADULTS  
AND CHILDREN FOR SEPTEMBER 2017 (STATEWIDE)**

SEPTEMBER 2015 THROUGH SEPTEMBER 2017

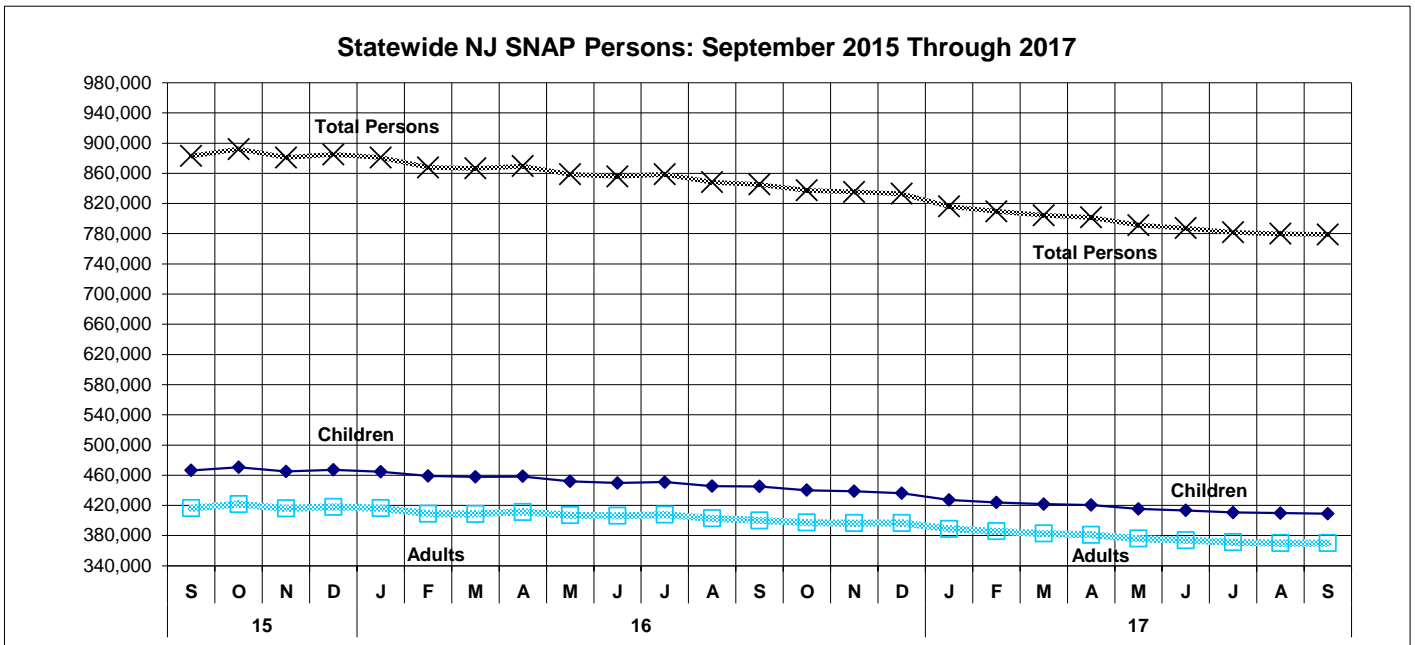
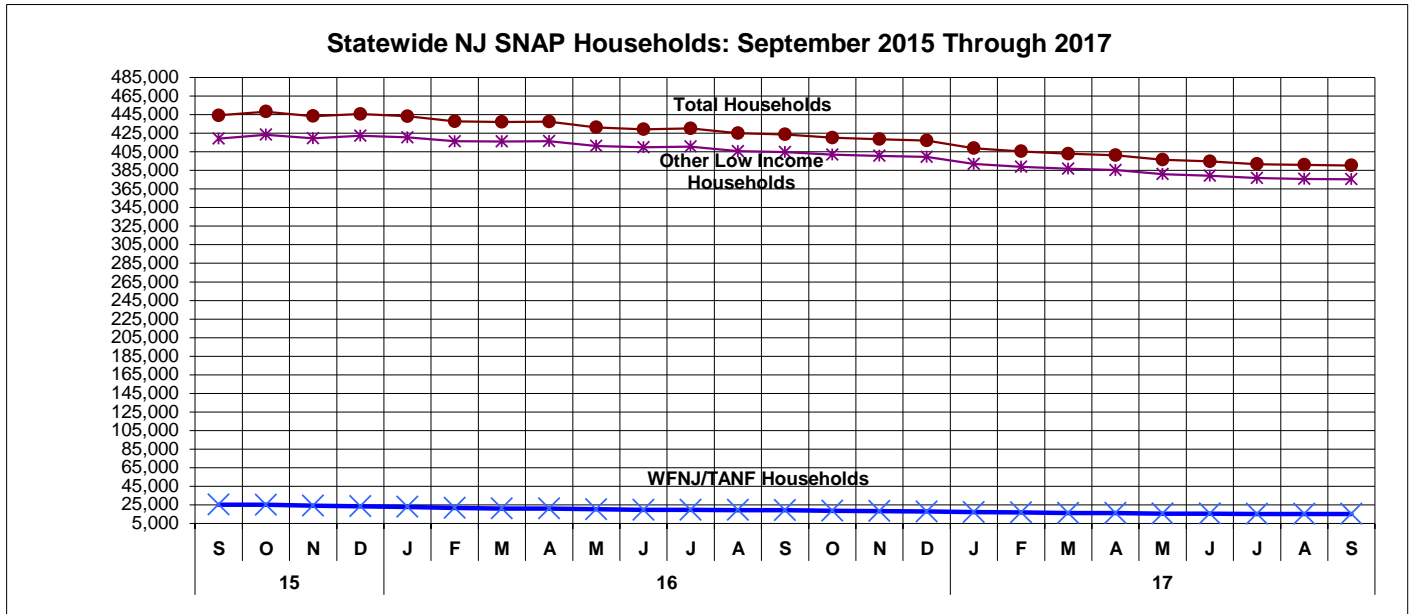
		HOUSEHOLDS				PERSONS					
		WFNJ/ TANF	Other low income	TOTAL	% CHNG (1 Yr.)	Adults	Children	TOTAL	% CHNG (1 Yr.)	Age 60+	People with a disability
<b>2015</b>	SEP	25,122	419,181	<b>444,303</b>	-1.2%	466,474	416,349	<b>882,823</b>	-1.6%		
	OCT	24,881	423,504	<b>448,385</b>	-1.3%	470,446	421,700	<b>892,146</b>	-1.4%		
	NOV	23,856	419,586	<b>443,442</b>	-2.6%	464,987	415,952	<b>880,939</b>	-2.9%		
	DEC	23,235	422,453	<b>445,688</b>	-2.0%	467,065	417,872	<b>884,937</b>	-2.4%		
<b>2015 Average</b>		<b>26,270</b>	<b>420,824</b>	<b>447,094</b>		<b>469,732</b>	<b>419,153</b>	<b>888,886</b>			
<b>2016</b>	JAN	22,704	420,599	<b>443,303</b>	-2.4%	464,619	416,207	<b>880,826</b>	-2.6%		
	FEB	21,540	416,382	<b>437,922</b>	-2.9%	458,883	408,965	<b>867,848</b>	-3.3%		
	MAR	20,936	416,167	<b>437,103</b>	-2.3%	457,814	408,604	<b>866,418</b>	-2.6%		
	APR	20,886	416,683	<b>437,569</b>	-2.3%	458,373	411,189	<b>869,562</b>	-2.3%		
	MAY	20,066	411,401	<b>431,467</b>	-3.5%	451,706	406,955	<b>858,661</b>	-3.4%		
	JUN	19,521	409,831	<b>429,352</b>	-3.5%	449,541	406,259	<b>855,800</b>	-3.2%		
	JUL	19,521	410,696	<b>430,217</b>	-3.4%	450,900	407,672	<b>858,572</b>	-3.1%		
	AUG	19,335	405,719	<b>425,054</b>	-4.6%	445,381	402,834	<b>848,215</b>	-4.2%		
	SEP	19,095	404,660	<b>423,755</b>	-4.6%	445,123	400,055	<b>845,178</b>	-4.3%		
	OCT	18,374	401,887	<b>420,261</b>	-6.3%	440,110	397,229	<b>837,339</b>	-6.1%		
	NOV	18,083	400,647	<b>418,730</b>	-5.6%	438,718	396,519	<b>835,237</b>	-5.2%		
	DEC	17,706	399,542	<b>417,248</b>	-6.4%	436,173	396,733	<b>832,906</b>	-5.9%		
<b>2016 Average</b>		<b>19,814</b>	<b>409,518</b>	<b>429,332</b>		<b>449,778</b>	<b>404,935</b>	<b>854,714</b>			
<b>2017</b>	JAN	17,044	391,958	<b>409,002</b>	-7.7%	427,349	388,777	<b>816,126</b>	-7.3%		
	FEB	16,687	388,842	<b>405,529</b>	-7.4%	423,886	385,701	<b>809,587</b>	-6.7%		
	MAR	16,158	386,779	<b>402,937</b>	-7.8%	421,536	382,755	<b>804,291</b>	-7.2%		
	APR	15,935	385,361	<b>401,296</b>	-8.3%	420,390	381,088	<b>801,478</b>	-7.8%		
	MAY	15,525	381,043	<b>396,568</b>	-8.1%	415,301	375,949	<b>791,250</b>	-7.9%		
	JUN	15,348	379,341	<b>394,689</b>	-8.1%	413,436	373,920	<b>787,356</b>	-8.0%		
	JUL	15,109	376,747	<b>391,856</b>	-8.9%	410,582	371,153	<b>781,735</b>	-8.9%		
	AUG	15,071	375,901	<b>390,972</b>	-8.0%	409,795	370,000	<b>779,795</b>	-8.1%	132,403	221,507
	SEP	15,032	375,469	<b>390,501</b>	-7.8%	409,052	369,928	<b>778,980</b>	-7.8%	132,065	221,449
<b>2017 AVG to date</b>		<b>15,768</b>	<b>382,382</b>	<b>398,150</b>		<b>416,814</b>	<b>377,697</b>	<b>794,511</b>		<b>132,234</b>	<b>221,478</b>

This Table is based on those Households & Persons that received SNAP issuances (benefits) during the month.

Data is derived from NJ MMIS Shared Data Warehouse.  
Effective July 2013 this data query source was converted to the SDW.

\* Age 60+ and People with a disability columns are independent subsets of the total persons. An individual might appear in both columns.

**TABLE 6: NJ SNAP (FOOD STAMPS)  
TRENDS FOR PARTICIPATING HOUSEHOLDS & PERSONS  
SEPTEMBER 2015 THROUGH SEPTEMBER 2017 (STATEWIDE)**



Data is derived from NJ MMIS Shared Data Warehouse.  
Effective July 2013 this data query source was converted to the SDW.

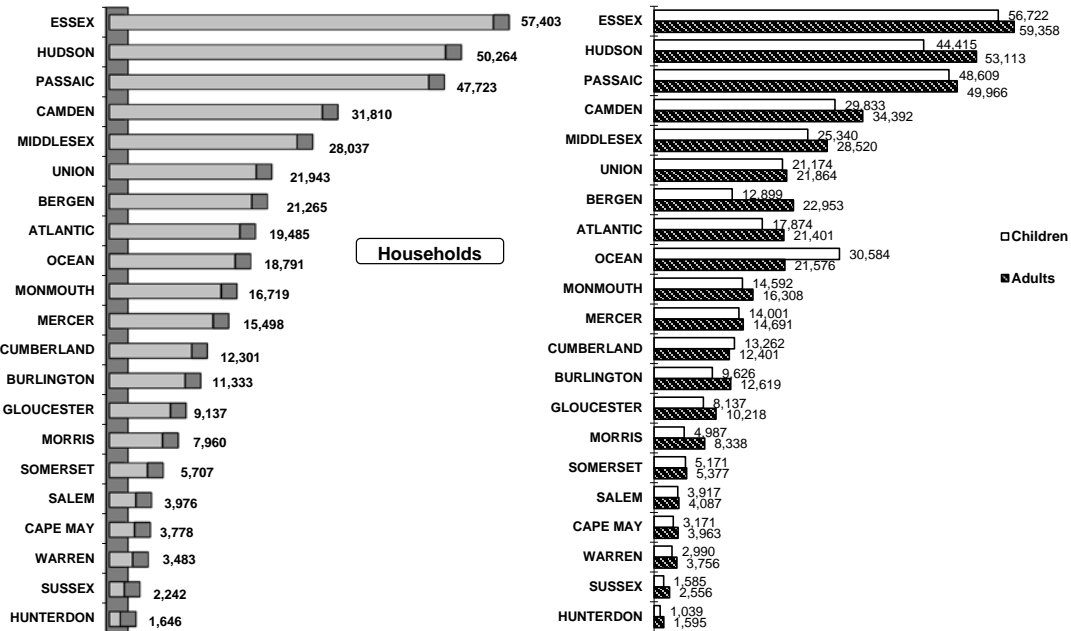
Table 7  
NJ SNAP

**NUMBER OF PARTICIPATING HOUSEHOLDS, PERSONS, ADULTS  
AND CHILDREN BY COUNTY FOR SEPTEMBER 2017**

County	HOUSEHOLDS				PERSONS					
	WFNJ/ TANF	Other low income	TOTAL	% Chng (1 Yr)	Adults	Children	TOTAL	% Chng (1 Yr)	Age 60+	People with a disability
ATLANTIC	1,089	18,396	19,485	(5.4)	21,401	17,874	39,275	(5.4)	5,346	10,165
BERGEN	375	20,890	21,265	(7.5)	22,953	12,899	35,852	(9.2)	12,386	15,408
BURLINGTON	527	10,806	11,333	(12.2) *	12,619	9,626	22,245	(11.4) *	3,109	7,013
CAMDEN	1,916	29,894	31,810	(4.7) Δ	34,392	29,833	64,225	(5.3)	8,294	18,750
CAPE MAY	123	3,655	3,778	(10.9) *	3,963	3,171	7,134	(14.8) *	1,109	2,416
CUMBERLAND	502	11,799	12,301	(9.6)	12,401	13,262	25,663	(9.4)	2,932	7,248
ESSEX	2,869	54,534	57,403	(9.9)	59,358	56,722	116,080	(9.6)	16,203	29,319
GLOUCESTER	406	8,731	9,137	(8.1)	10,218	8,137	18,355	(8.0)	2,444	5,853
HUDSON	1,748	48,516	50,264	(9.2)	53,113	44,415	97,528	(8.7)	19,386	27,454
HUNTERDON	27	1,619	1,646	(5.6)	1,595	1,039	2,634	(7.3)	608	1,056
MERCER	861	14,637	15,498	(6.4)	14,691	14,001	28,692	(7.0)	4,256	9,757
MIDDLESEX	648	27,389	28,037	(6.1)	28,520	25,340	53,860	(6.6)	12,397	17,032
MONMOUTH	292	16,427	16,719	(7.2)	16,308	14,592	30,900	(8.1)	5,747	9,879
MORRIS	122	7,838	7,960	(7.4)	8,338	4,987	13,325	(7.3)	4,157	5,365
OCEAN	412	18,379	18,791	(10.3)	21,576	30,584	52,160	(9.2)	5,740	10,625
PASSAIC	1,826	45,897	47,723	(5.5)	49,966	48,609	98,575	(4.7)	15,007	22,191
SALEM	168	3,808	3,976	(3.0) Δ	4,087	3,917	8,004	(3.8) Δ	938	2,391
SOMERSET	213	5,494	5,707	(7.7)	5,377	5,171	10,548	(9.3)	2,160	3,363
SUSSEX	66	2,176	2,242	(4.8)	2,556	1,585	4,141	(2.4) Δ	832	1,658
UNION	692	21,251	21,943	(11.0) *	21,864	21,174	43,038	(10.5) *	7,941	12,234
WARREN	150	3,333	3,483	0.1 Δ	3,756	2,990	6,746	(1.5) Δ	1,073	2,272
<b>NJ TOTAL</b>	<b>15,032</b>	<b>375,469</b>	<b>390,501</b>	<b>(7.8)</b>	<b>409,052</b>	<b>369,928</b>	<b>778,980</b>	<b>(7.8)</b>	<b>132,065</b>	<b>221,449</b>

Δ= ↑ Caseload %  
\*= ↓ Caseload %

Total NJ SNAP Recipients  
SEPTEMBER 2017 By County



Data is derived from NJ MMIS Shared Data Warehouse  
Effective July 2013 this data query source was converted to the SDW

\* Age 60+ and People with a disability columns are independent subsets of the total persons. An individual might appear in both columns.

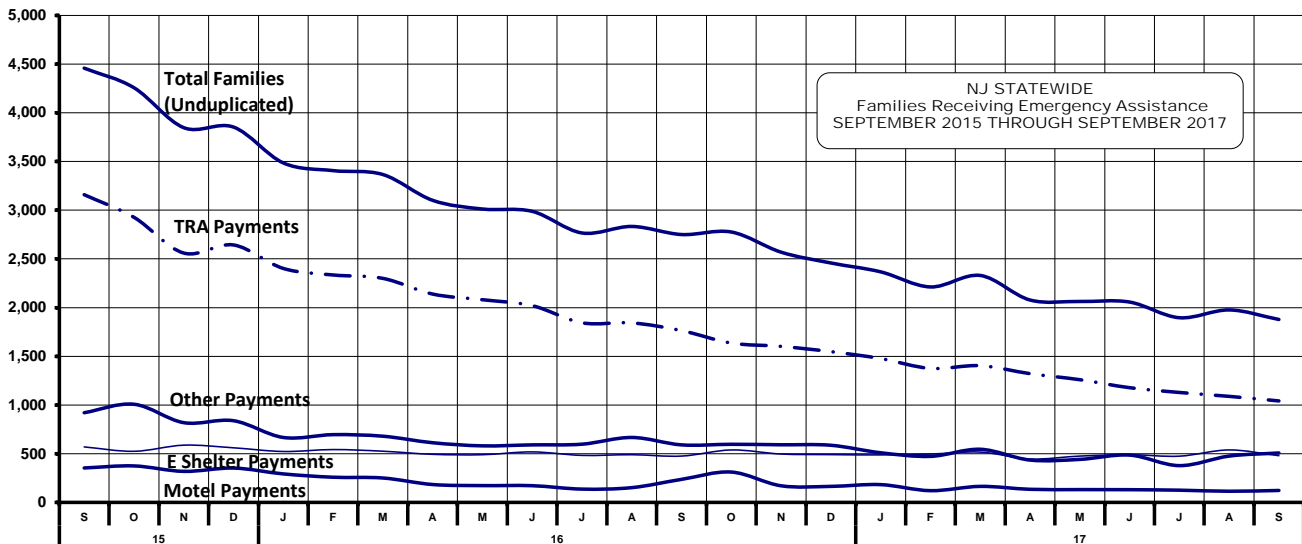
Table 8

**TOTAL NUMBER OF ELIGIBLE FAMILIES RECEIVING EMERGENCY ASSISTANCE PAYMENTS**

EMERGENCY ASSISTANCE (STATEWIDE)

**SEPTEMBER 2015 THROUGH SEPTEMBER 2017 - STATEWIDE**

		TOTAL WFNJ/EA		Temp		Motel		Shelter/Transitional		Other	
		Families (Undupl)	% CHNG (1 YR)	Rent Asst. Payments (Undupl)	% CHNG (1 YR)	Housing Payments (Undupl)	% CHNG (1 YR)	Housing Payments (Undupl)	% CHNG (1 YR)	EA Payments (Undupl)	% CHNG (1 YR)
<b>2015</b>	SEP	4,458	-31.9%	3,159	-28.9%	354	-43.8%	570	-19.0%	921	-48.1%
	OCT	4,257	-36.0%	2,927	-37.0%	375	-44.4%	525	-15.6%	1,008	-42.0%
	NOV	3,847	-37.0%	2,560	-41.4%	319	-39.9%	588	-7.0%	819	-38.5%
	DEC	3,853	-37.8%	2,643	-40.1%	353	-38.2%	561	-12.8%	839	-41.9%
<b>2015 Average</b>		<b>5,007</b>		<b>3,594</b>		<b>407</b>		<b>581</b>		<b>1,088</b>	
<b>2016</b>	JAN	3,485	-40.8%	2,402	-43.8%	293	-48.4%	523	-15.8%	667	-50.2%
	FEB	3,406	-40.1%	2,335	-43.8%	259	-45.6%	543	-6.7%	696	-44.1%
	MAR	3,366	-41.8%	2,300	-45.5%	251	-51.3%	526	-9.6%	680	-45.6%
	APR	3,101	-46.1%	2,139	-49.4%	184	-58.7%	494	-20.3%	613	-49.5%
	MAY	3,012	-45.1%	2,081	-47.9%	173	-58.4%	490	-18.2%	581	-50.3%
	JUN	2,988	-43.6%	2,020	-48.3%	172	-49.6%	519	-17.5%	591	-48.6%
	JUL	2,766	-45.8%	1,844	-50.2%	137	-65.6%	483	-14.5%	598	-42.4%
	AUG	2,833	-39.5%	1,843	-45.3%	152	-52.1%	490	-7.9%	667	-37.4%
	SEP	2,750	-38.3%	1,764	-44.2%	237	-33.1%	476	-16.5%	591	-35.8%
	OCT	2,776	-34.8%	1,636	-44.1%	312	-16.8%	539	2.7%	597	-40.8%
	NOV	2,569	-33.2%	1,602	-37.4%	171	-46.4%	497	-15.5%	592	-27.7%
	DEC	2,458	-36.2%	1,548	-41.4%	165	-53.3%	491	-12.5%	587	-30.0%
<b>2016 Average</b>		<b>2,959</b>		<b>1,960</b>		<b>209</b>		<b>506</b>		<b>622</b>	
<b>2017</b>	JAN	2,367	-32.1%	1,477	-38.5%	183	-37.5%	488	-6.7%	510	-23.5%
	FEB	2,212	-35.1%	1,376	-41.1%	121	-53.3%	497	-8.5%	473	-32.0%
	MAR	2,330	-30.8%	1,404	-39.0%	165	-34.3%	517	-1.7%	546	-19.7%
	APR	2,078	-33.0%	1,322	-38.2%	135	-26.6%	446	-9.7%	435	-29.0%
	MAY	2,063	-31.5%	1,260	-39.5%	132	-23.7%	476	-2.9%	442	-23.9%
	JUN	2,057	-31.2%	1,178	-41.7%	131	-23.8%	490	-5.6%	486	-17.8%
	JUL	1,896	-31.5%	1,129	-38.8%	126	-8.0%	475	-1.7%	378	-36.8%
	AUG	1,976	-30.3%	1,089	-40.9%	115	-24.3%	539	10.0%	476	-28.6%
	SEP	1,878	-31.7%	1,042	-40.9%	123	-48.1%	480	0.8%	508	-14.0%
<b>2017 AVG to date</b>		<b>2,095</b>		<b>1,253</b>		<b>137</b>		<b>490</b>		<b>473</b>	



WFNJ/EA data is derived from NJ MMIS Shared Data Warehouse. Effective July 2013 this data query source was converted to the SDW.

\* Effective Feb '11 Transitional Housing Payments were removed from "Other EA Payments" and added to "Shelter Payments."

Table 9  
EMERGENCY  
ASSISTANCE  
(BY COUNTY)

**NUMBER OF TOTAL ELIGIBLE FAMILIES RECEIVING EMERGENCY ASSISTANCE PAYMENTS  
BY COUNTY (UNDUPLICATED CASES) SEPTEMBER 2017**

County	TOTAL WFNJ/EA Families (Undupl)	% CHNG From Sep 16	Temp Rent Asst. Payments (Undupl)	Motel Housing Payments (Undupl)	Shelter/Transitional Housing Payments (Undupl)	Other WFNJ/EA Payments (Undupl)	SSI Recipients Receiving EA**
ATLANTIC	116	-3.3%	81	0	4	51	63
BERGEN	60	-36.2%	31	0	24	10	8
BURLINGTON	97	-39.4%	24	7	68	12	21
CAMDEN	71	-23.7%	30	7	33	13	12
CAPE MAY	17	-55.3% *	6	12	0	3	9
CUMBERLAND	4	-33.3%	1	0	3	1	4
ESSEX	390	-39.4%	191	0	152	78	102
GLOUCESTER	31	-16.2%	12	7	11	17	9
HUDSON	186	-36.3%	114	10	39	62	15
HUNTERDON	1	-85.7% *	1	0	0	0	0
MERCER	86	-48.2%	55	3	2	41	36
MIDDLESEX	83	0.0%	16	31	16	27	11
MONMOUTH	23	187.5% Δ	3	2	18	2	0
MORRIS	24	-50.0%	13	4	3	8	24
OCEAN	68	-27.7%	54	11	1	24	6
PASSAIC	394	-34.8%	285	5	46	110	65
SALEM	2	-77.8% *	0	0	0	2	1
SOMERSET	62	-20.5%	28	8	22	17	25
SUSSEX	7	-53.3%	1	0	5	1	7
UNION	143	0.7% Δ	90	12	31	26	16
WARREN	13	8.3% Δ	6	4	2	3	2
<b>NJ TOTAL</b>	<b>1,878</b>	<b>-31.7%</b>	<b>1,042</b>	<b>123</b>	<b>480</b>	<b>508</b>	<b>436</b>

Δ= ↑ Caseload %

\* = ↓ Caseload %

\*\*SSI-EA includes pay codes 22 and 24, data is derived from NJ Division of Family Development FAMIS Report #FM430-03A

WFNJ/EA data is derived from NJ MMIS Shared Data Warehouse.

Effective July 2013 this data query source was converted to the SDW

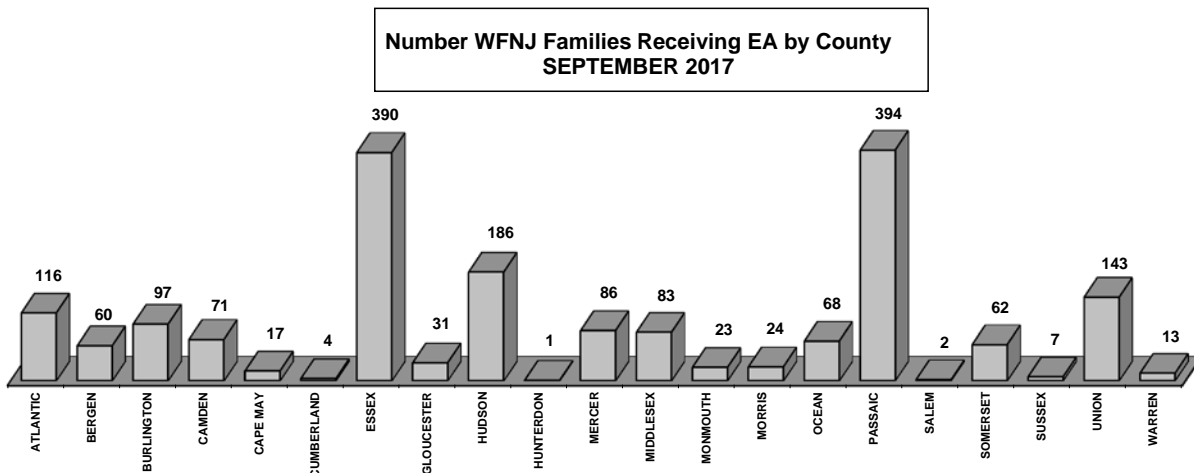
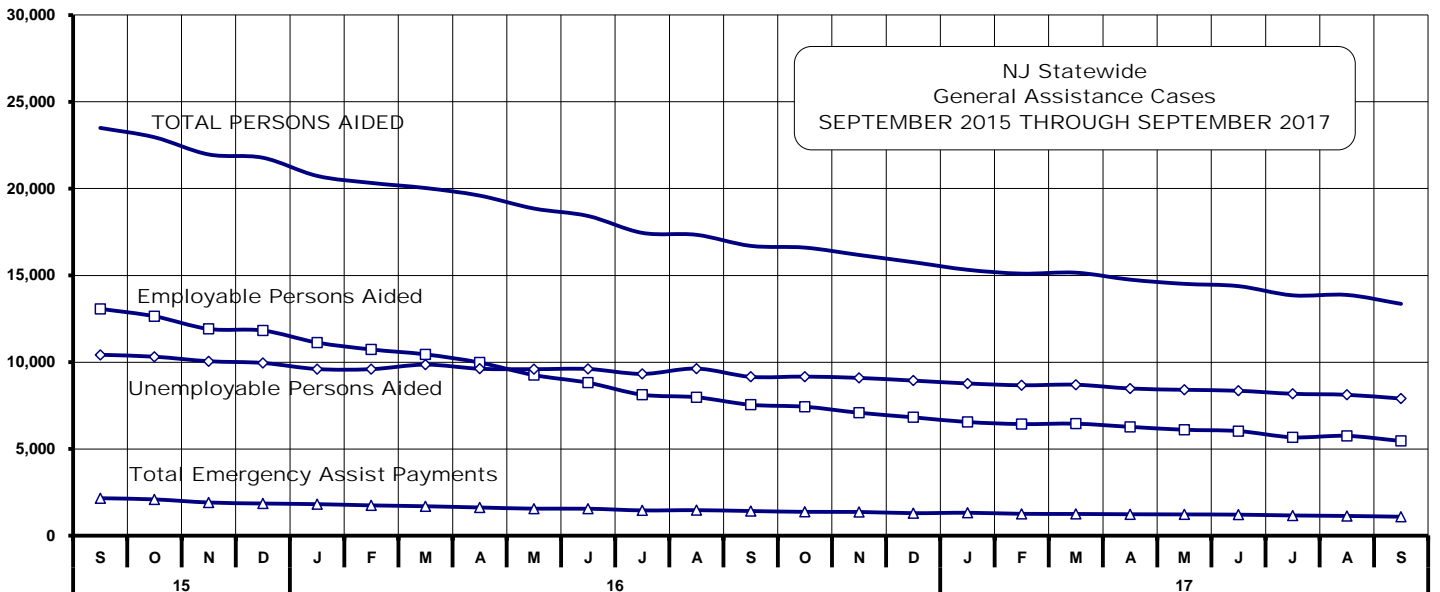


Table 10 **NUMBER OF EMPLOYABLE AND UNEMPLOYABLE RECIPIENTS AND EMERGENCY ASSISTANCE PAYMENTS FOR SEPTEMBER 2017 - STATEWIDE ASSISTANCE PROGRAM**  
 SEPTEMBER 2015 THROUGH SEPTEMBER 2017

PROGRAM		Total Cases				Emergency Assistance Cases					
		Employable	% Chng (1 Yr)	Unemployable	% Chng (1 Yr)	Total	% Chng (1 Yr)	Temporary Rental Assistance	Other GA-EA	Total	% Chng (1 Yr)
<b>2015</b>	SEP	13,073	-29.2%	10,425	-13.3%	<b>23,498</b>	-22.9%	2,161	1,706	<b>3,867</b>	-25.4%
	OCT	12,644	-29.9%	10,315	-15.1%	<b>22,959</b>	-23.9%	2,093	1,828	<b>3,921</b>	-28.8%
	NOV	11,914	-31.4%	10,054	-16.2%	<b>21,968</b>	-25.2%	1,914	1,509	<b>3,423</b>	-26.1%
	DEC	11,825	-31.2%	9,954	-15.5%	<b>21,779</b>	-24.8%	1,856	1,876	<b>3,732</b>	-28.2%
<b>2015 Average</b>		<b>14,284</b>		<b>10,811</b>		<b>25,095</b>		<b>2,401</b>	<b>2,077</b>	<b>4,478</b>	
<b>2016</b>	JAN	11,130	-33.8%	9,604	-17.8%	<b>20,734</b>	-27.2%	1,819	1,504	<b>3,323</b>	-35.8%
	FEB	10,731	-34.0%	9,597	-15.9%	<b>20,328</b>	-26.6%	1,748	1,578	<b>3,326</b>	-32.1%
	MAR	10,449	-35.2%	9,585	-15.7%	<b>20,034</b>	-27.2%	1,698	1,654	<b>3,352</b>	-36.8%
	APR	9,977	-35.2%	9,620	-14.2%	<b>19,597</b>	-26.3%	1,627	1,612	<b>3,239</b>	-36.9%
	MAY	9,257	-38.7%	9,596	-12.8%	<b>18,853</b>	-27.8%	1,559	1,163	<b>2,722</b>	-43.8%
	JUN	8,816	-39.9%	9,607	-12.2%	<b>18,423</b>	-28.0%	1,556	1,365	<b>2,921</b>	-38.3%
	JUL	8,126	-42.1%	9,324	-13.4%	<b>17,450</b>	-29.6%	1,459	1,236	<b>2,695</b>	-41.5%
	AUG	7,978	-41.1%	9,360	-11.5%	<b>17,338</b>	-28.1%	1,473	1,389	<b>2,862</b>	-30.1%
	SEP	7,545	-42.3%	9,156	-12.2%	<b>16,701</b>	-28.9%	1,423	1,209	<b>2,632</b>	-31.9%
	OCT	7,432	-41.2%	9,169	-11.1%	<b>16,601</b>	-27.7%	1,375	1,427	<b>2,802</b>	-28.5%
	NOV	7,084	-40.5%	9,093	-9.6%	<b>16,177</b>	-26.4%	1,369	1,328	<b>2,697</b>	-21.2%
	DEC	6,823	-42.3%	8,938	-10.2%	<b>15,761</b>	-27.6%	1,300	1,251	<b>2,551</b>	-31.6%
<b>2016 Average</b>		<b>8,779</b>		<b>9,387</b>		<b>18,166</b>		<b>1,534</b>	<b>1,393</b>	<b>2,927</b>	
<b>2017</b>	JAN	6,551	-41.1%	8,773	-8.7%	<b>15,324</b>	-26.1%	1,323	1,190	<b>2,513</b>	-24.4%
	FEB	6,433	-40.1%	8,669	-9.7%	<b>15,102</b>	-25.7%	1,262	1,111	<b>2,373</b>	-28.7%
	MAR	6,455	-38.2%	8,701	-9.2%	<b>15,156</b>	-24.3%	1,254	1,185	<b>2,439</b>	-27.2%
	APR	6,273	-37.1%	8,483	-11.8%	<b>14,756</b>	-24.7%	1,237	1,174	<b>2,411</b>	-25.6%
	MAY	6,105	-34.0%	8,407	-12.4%	<b>14,512</b>	-23.0%	1,227	1,180	<b>2,407</b>	-11.6%
	JUN	6,029	-31.6%	8,352	-13.1%	<b>14,381</b>	-21.9%	1,214	1,192	<b>2,406</b>	-17.6%
	JUL	5,672	-30.2%	8,178	-12.3%	<b>13,850</b>	-20.6%	1,167	1,011	<b>2,178</b>	-19.2%
	AUG	5,754	-27.9%	8,120	-13.2%	<b>13,874</b>	-20.0%	1,139	1,196	<b>2,335</b>	-18.4%
	SEP	5,458	-27.7%	7,902	-13.7%	<b>13,360</b>	-20.0%	1,095	1,039	<b>2,134</b>	-18.9%
<b>2017 AVG to date</b>		<b>6,081</b>		<b>8,398</b>		<b>14,479</b>		<b>1,213</b>	<b>1,142</b>	<b>2,355</b>	



Source: NJ Division of Family Development, GA Fiscal Unit

TABLE 11

GENERAL  
ASSISTANCE  
PROGRAM**EMPLOYABLE AND UNEMPLOYABLE CASES  
AND EMERGENCY ASSISTANCE CASES RECEIVING PAYMENTS BY COUNTY**

SEPTEMBER 2017

County	Total Cases				Emergency Assistance Cases					
	Employable	% Chng (From Sep 16)	Unemployable	% Chng (From Sep 16)	Total	% Chng (From Sep 16)	Temporary Rental Assist.	Other GA-EA	Total	% Chng (From Sep 16)
<b>ATLANTIC</b>	585	-34.9%	405	0.2%	<b>990</b>	-24.0%	150	31	181	5.8%
<b>BERGEN</b>	353	-29.3%	600	-17.5%	<b>953</b>	-22.3%	143	26	169	-30.2%
<b>BURLINGTON</b>	288	-37.4%	520	-11.4%	<b>808</b>	-22.8%	35	142	177	-24.0%
<b>CAMDEN</b>	568	-17.9%	959	-12.4%	<b>1,527</b>	-14.5%	61	92	153	-8.4%
<b>CAPE MAY</b>	49	-2.0%	104	11.8%	<b>153</b>	7.0% Δ	27	45	72	0.0%
<b>CUMBERLAND</b>	206	-26.4%	332	-1.5%	<b>538</b>	-12.8%	4	12	16	-61.0% *
<b>ESSEX</b>	971	-20.5%	533	-20.8%	<b>1,504</b>	-20.6%	66	155	221	-30.1%
<b>GLOUCESTER</b>	190	-39.1%	288	-8.0%	<b>478</b>	-23.5%	15	49	64	39.1% Δ
<b>HUDSON</b>	501	-35.7%	1,105	-13.7%	<b>1,606</b>	-22.0%	94	58	152	-6.2%
<b>HUNTERDON</b>	38	18.8%	70	-19.5%	<b>108</b>	-9.2%	11	18	29	-35.6%
<b>MERCER</b>	216	-17.2%	478	-18.3%	<b>694</b>	-18.0%	48	31	79	-37.3% *
<b>MIDDLESEX</b>	244	-33.0%	414	2.0%	<b>658</b>	-14.5%	68	69	137	-16.5%
<b>MONMOUTH</b>	60	17.6%	186	2.8%	<b>246</b>	6.0% Δ	2	16	18	-35.7%
<b>MORRIS</b>	128	-34.7%	229	-22.4%	<b>357</b>	-27.3% *	68	37	105	-36.0% *
<b>OCEAN</b>	197	-16.2%	334	-2.9%	<b>531</b>	-8.3%	58	47	105	-22.2%
<b>PASSAIC</b>	302	-39.0%	625	-25.6%	<b>927</b>	-30.6% *	106	19	125	-35.2%
<b>SALEM</b>	42	27.3%	88	-44.7%	<b>130</b>	-32.3% *	6	7	13	-27.8%
<b>SOMERSET</b>	65	-11.0%	67	-22.1%	<b>132</b>	-17.0%	21	22	43	-12.2%
<b>SUSSEX</b>	63	-19.2%	45	9.8%	<b>108</b>	-9.2%	4	26	30	66.7% Δ
<b>UNION</b>	293	-31.9%	410	-20.8%	<b>703</b>	-25.8%	98	107	205	-3.3%
<b>WARREN</b>	99	-5.7%	110	4.8%	<b>209</b>	-0.5% Δ	10	30	40	33.3% Δ
<b>NJ TOTAL</b>	5,458	-27.7%	7,902	-13.7%	<b>13,360</b>	-20.0%	1,095	1,039	2,134	-18.9%

Δ = ↑ Caseload %

\* = ↓ Caseload %

Source: NJ Division of Family Development, GA Fiscal Unit



TABLE 12  
OFFICE OF CHILD  
SUPPORT  
SERVICES

**OFFICE OF CHILD SUPPORT SERVICES**  
Quarterly Performance Report  
State Summary  
**TITLE IV-D SOURCE COLLECTION REPORT**  
Comparison of Quarter-4 (FFY 16 vs. FFY 17)

COLLECTION SOURCE	TOTAL 7/1/2016 - 9/30/2016	% OF TOTAL COLLECTIONS	TOTAL 7/1/2017 - 9/30/2017	% OF TOTAL COLLECTIONS	DOLLAR CHANGE	% CHANGE
FEDERAL TAX	\$ 1,242,063	0.39%	\$ 2,318,806	0.76%	\$ 1,076,743	86.69%
STATE TAX	\$ 1,791,466	0.56%	\$ 2,014,414	0.66%	\$ 222,948	12.45%
UIB	\$ 6,980,063	2.18%	\$ 6,570,564	2.17%	\$ (409,499)	-5.87%
INC WITHHOLD	\$ 224,643,122	70.10%	\$ 211,412,753	69.69%	\$ (13,230,369)	-5.89%
FROM OTHER STATES	\$ 12,702,234	3.96%	\$ 11,999,722	3.96%	\$ (702,512)	-5.53%
ADMIN ENFORCEMENT	\$ 3,089,472	0.96%	\$ 4,078,370	1.34%	\$ 988,898	32.01%
OTHER	\$ 70,032,526	21.85%	\$64,955,033	21.41%	\$ (5,077,493)	-7.25%
<b>TOTAL COLLECTIONS*</b>	<b>\$ 320,480,946</b>	<b>100%</b>	<b>\$ 303,349,662</b>	<b>100%</b>	<b>\$ (17,131,284)</b>	<b>-5.35%</b>
<b>DISTRIBUTED COLLECTIONS**</b>	<b>\$ 297,975,492</b>		<b>\$ 273,417,204</b>		<b>\$ (24,558,288)</b>	<b>-8.24%</b>

\* Includes collections on both current support and arrears.

\*\* Includes collections on both current support and arrears; also includes money sent to other states.

SOURCE: NJKiDS (Based on Federal Quarterly Report of Collections - OCSE-34A except Distributed Collections)  
Distributed Collections obtained from Federal Data Report - OCSE-157, which is reported annually to Congress and used in the calculation of incentive dollars earned by each state.

TABLE 13

OFFICE OF CHILD  
SUPPORT SERVICES**OFFICE OF CHILD SUPPORT SERVICES**

State Summary

**TITLE IV-D PATERNITY ESTABLISHMENT REPORT**

Comparison of September (FFY 16 vs. FFY 17)

County Office	SEPTEMBER 2016			SEPTEMBER 2017			Increase or Decrease (-) from FFY 2016 to FFY 2017
	Total Children Born Out of Wedlock*	Number of Paternities Established	Percent of Paternities Established	Total Children Born Out of Wedlock*	Number of Paternities Established	Percent of Paternities Established	
Atlantic	7,992	7,837	98.1%	7,628	7,468	97.9%	-0.2%
Bergen	4,124	4,022	97.5%	3,845	3,778	98.3%	0.7%
Burlington	6,813	6,546	96.1%	6,328	6,100	96.4%	0.3%
Camden	21,662	20,324	93.8%	20,114	19,027	94.6%	0.8%
Cape May	1,680	1,643	97.8%	1,565	1,538	98.3%	0.5%
Cumberland	8,235	8,153	99.0%	7,694	7,613	98.9%	-0.1%
Essex	35,271	32,370	91.8%	32,604	30,186	92.6%	0.8%
Gloucester	5,676	5,581	98.3%	5,402	5,290	97.9%	-0.4%
Hudson	14,510	13,527	93.2%	13,437	12,613	93.9%	0.6%
Hunterdon	424	415	97.9%	382	374	97.9%	0.0%
Mercer	9,485	9,069	95.6%	8,896	8,565	96.3%	0.7%
Middlesex	8,695	8,426	96.9%	8,035	7,805	97.1%	0.2%
Monmouth	7,137	6,818	95.5%	6,652	6,363	95.7%	0.1%
Morris	1,873	1,831	97.8%	1,646	1,620	98.4%	0.7%
Ocean	6,159	5,955	96.7%	5,761	5,600	97.2%	0.5%
Passaic	15,240	14,091	92.5%	14,050	13,036	92.8%	0.3%
Salem	2,896	2,802	96.8%	2,924	2,822	96.5%	-0.2%
Somerset	2,111	2,039	96.6%	1,917	1,846	96.3%	-0.3%
Sussex	781	768	98.3%	726	714	98.3%	0.0%
Union	12,968	11,955	92.2%	12,132	11,397	93.9%	1.8%
Warren	1,239	1,215	98.1%	1,167	1,156	99.1%	1.0%
<b>NJ TOTALS</b>	<b>174,971</b>	<b>165,387</b>	<b>94.5%</b>	<b>162,905</b>	<b>154,911</b>	<b>95.1%</b>	<b>0.6%</b>

SOURCE: NJKiDS (Based on Federal Performance Measures - OCSE-157)

\* Information on Out of Wedlock Births obtained from NJ Bureau of Vital Statistics

TABLE 14

OFFICE OF CHILD  
SUPPORT SERVICES**OFFICE OF CHILD SUPPORT SERVICES**

State Summary

## TITLE IV-D REPORT OF CASES WITH ORDERS

Comparison of September (FFY 16 vs. FFY 17)

County Office	September 2016			September 2017			Increase or Decrease (-) from FFY 2016 to FFY 2017
	TOTAL CASES	CASES WITH ORDERS	% OF CASES WITH ORDERS	TOTAL CASES	CASES WITH ORDERS	% OF CASES WITH ORDERS	
Atlantic	13,899	12,228	88.0%	13,643	11,852	86.9%	-1.1%
Bergen	13,554	12,894	95.1%	13,017	12,465	95.8%	0.6%
Burlington	15,849	13,825	87.2%	15,155	13,368	88.2%	1.0%
Camden	35,663	28,812	80.8%	33,799	28,053	83.0%	2.2%
Cape May	3,754	3,291	87.7%	3,471	3,141	90.5%	2.8%
Cumberland	13,429	12,732	94.8%	12,953	12,139	93.7%	-1.1%
Essex	53,089	40,968	77.2%	50,118	39,127	78.1%	0.9%
Gloucester	11,810	11,167	94.6%	11,594	10,943	94.4%	-0.2%
Hudson	27,005	21,322	79.0%	25,384	20,283	79.9%	0.9%
Hunterdon	1,788	1,717	96.0%	1,602	1,548	96.6%	0.6%
Mercer	16,808	14,408	85.7%	15,849	13,862	87.5%	1.7%
Middlesex	20,510	18,853	91.9%	19,375	17,919	92.5%	0.6%
Monmouth	16,562	15,490	93.5%	15,744	14,836	94.2%	0.7%
Morris	6,879	6,585	95.7%	6,512	6,238	95.8%	0.1%
Ocean	16,951	15,945	94.1%	16,080	15,334	95.4%	1.3%
Passaic	26,896	19,388	72.1%	25,557	18,654	73.0%	0.9%
Salem	4,745	4,544	95.8%	4,712	4,539	96.3%	0.6%
Somerset	5,874	5,300	90.2%	5,526	5,145	93.1%	2.9%
Sussex	3,041	2,952	97.1%	2,977	2,830	95.1%	-2.0%
Union	21,738	19,376	89.1%	20,480	18,793	91.8%	2.6%
Warren	3,428	3,098	90.4%	3,320	3,003	90.5%	0.1%
<b>NJ TOTALS</b>	<b>333,272</b>	<b>284,895</b>	<b>85.5%</b>	<b>316,868</b>	<b>274,072</b>	<b>86.5%</b>	<b>1.0%</b>

SOURCE: NJKiDS (Based on Federal Performance Measures - OCSE-157)

TABLE 15

OFFICE OF CHILD  
SUPPORT SERVICES**OFFICE OF CHILD SUPPORT SERVICES**

State Summary

**TITLE IV-D COLLECTIONS ON CURRENT SUPPORT**

Comparison of September (FFY 16 vs. FFY 17)

County Office	September 2016			September 2017			Increase or Decrease (-) from FFY 2016 to FFY 2017
	Total Current Support Due	Total Current Support Distributed	Total Collection Rate	Total Current Support Due	Total Current Support Distributed	Total Collection Rate	
Atlantic	\$4,204,358	\$2,743,082	65.2%	\$3,638,678	\$2,424,661	66.6%	1.4%
Bergen	\$9,630,613	\$7,295,043	75.7%	\$8,359,873	\$6,433,778	77.0%	1.2%
Burlington	\$6,749,713	\$4,701,274	69.7%	\$5,828,217	\$4,127,839	70.8%	1.2%
Camden	\$8,754,386	\$5,217,030	59.6%	\$7,863,073	\$4,718,273	60.0%	0.4%
Cape May	\$1,278,636	\$887,764	69.4%	\$1,092,798	\$779,134	71.3%	1.9%
Cumberland	\$3,421,822	\$2,001,975	58.5%	\$2,997,583	\$1,796,128	59.9%	1.4%
Essex	\$13,637,510	\$7,819,293	57.3%	\$10,779,823	\$6,499,624	60.3%	3.0%
Gloucester	\$4,831,795	\$3,090,518	64.0%	\$4,298,129	\$2,780,459	64.7%	0.7%
Hudson	\$8,357,613	\$5,527,495	66.1%	\$6,970,105	\$4,751,037	68.2%	2.0%
Hunterdon	\$1,554,167	\$1,245,729	80.2%	\$1,268,819	\$1,019,382	80.3%	0.2%
Mercer	\$5,086,215	\$3,180,200	62.5%	\$4,195,486	\$2,616,580	62.4%	-0.2%
Middlesex	\$9,320,883	\$6,286,274	67.4%	\$7,740,666	\$5,391,180	69.6%	2.2%
Monmouth	\$8,739,581	\$6,220,874	71.2%	\$7,366,952	\$5,348,185	72.6%	1.4%
Morris	\$5,046,301	\$3,723,244	73.8%	\$4,502,283	\$3,289,602	73.1%	-0.7%
Ocean	\$7,865,004	\$5,693,299	72.4%	\$6,745,755	\$4,914,365	72.9%	0.5%
Passaic	\$7,630,098	\$4,747,761	62.2%	\$6,390,019	\$4,114,300	64.4%	2.2%
Salem	\$1,386,512	\$797,765	57.5%	\$1,180,037	\$702,030	59.5%	2.0%
Somerset	\$3,655,041	\$2,884,307	78.9%	\$3,210,820	\$2,515,322	78.3%	-0.6%
Sussex	\$2,045,966	\$1,534,574	75.0%	\$1,823,314	\$1,412,707	77.5%	2.5%
Union	\$7,945,625	\$5,203,437	65.5%	\$6,659,825	\$4,551,443	68.3%	2.9%
Warren	\$1,500,950	\$1,107,014	73.8%	\$1,341,339	\$989,628	73.8%	0.0%
<b>NJ TOTALS</b>	<b>\$122,642,787</b>	<b>\$81,907,953</b>	<b>66.8%</b>	<b>\$104,253,594</b>	<b>\$71,175,657</b>	<b>68.3%</b>	<b>1.5%</b>

SOURCE: NJKiDS (Based on Federal Performance Measures - OCSE-157)

TABLE 16

OFFICE OF CHILD  
SUPPORT SERVICES**OFFICE OF CHILD SUPPORT SERVICES**

State Summary

**TITLE IV-D CASES ARREARS COLLECTION REPORT**

Comparison of September (FFY 16 vs. FFY 17)

County Office	September 2016			September 2017			Increase or Decrease (-) from FFY 2016 to FFY 2017
	Total Cases with Arrears	Total Amount Collected	Average Arrears Collection per Case	Total Cases with Arrears	Total Amount Collected	Average Arrears Collection per Case	
Atlantic	8,479	\$547,778	\$64.60	7,664	\$569,865	\$74.36	\$9.75
Bergen	8,675	\$1,673,873	\$192.95	7,684	\$945,595	\$123.06	-\$69.89
Burlington	9,345	\$760,026	\$81.33	8,695	\$872,796	\$100.38	\$19.05
Camden	18,283	\$1,188,658	\$65.01	17,581	\$1,266,583	\$72.04	\$7.03
Cape May	2,315	\$193,909	\$83.76	2,129	\$244,556	\$114.87	\$31.11
Cumberland	8,458	\$479,683	\$56.71	7,932	\$508,732	\$64.14	\$7.42
Essex	28,457	\$2,051,187	\$72.08	24,004	\$2,267,858	\$94.48	\$22.40
Gloucester	7,758	\$532,269	\$68.61	7,336	\$613,346	\$83.61	\$15.00
Hudson	15,222	\$1,248,918	\$82.05	13,387	\$1,287,711	\$96.19	\$14.14
Hunterdon	1,039	\$120,899	\$116.36	971	\$117,727	\$121.24	\$4.88
Mercer	9,769	\$761,755	\$77.98	8,811	\$764,344	\$86.75	\$8.77
Middlesex	13,033	\$1,136,711	\$87.22	11,600	\$1,285,980	\$110.86	\$23.64
Monmouth	10,413	\$968,896	\$93.05	9,229	\$1,042,224	\$112.93	\$19.88
Morris	4,608	\$476,027	\$103.30	4,055	\$524,911	\$129.45	\$26.14
Ocean	10,672	\$878,335	\$82.30	9,813	\$960,560	\$97.89	\$15.58
Passaic	13,719	\$1,117,319	\$81.44	12,023	\$1,171,863	\$97.47	\$16.03
Salem	2,955	\$168,119	\$56.89	2,746	\$183,403	\$66.79	\$9.90
Somerset	3,536	\$364,500	\$103.08	3,358	\$431,349	\$128.45	\$25.37
Sussex	2,069	\$226,329	\$109.39	1,869	\$226,194	\$121.02	\$11.63
Union	13,494	\$1,193,199	\$88.42	12,000	\$1,185,793	\$98.82	\$10.39
Warren	2,096	\$167,949	\$80.13	1,915	\$164,853	\$86.09	\$5.96
<b>NJ TOTALS</b>	<b>194,395</b>	<b>\$16,256,339</b>	<b>\$83.63</b>	<b>174,802</b>	<b>\$16,636,243</b>	<b>\$95.17</b>	<b>\$11.55</b>

SOURCE: OCSE-157 Child Support Enforcement Annual Data Report

Table 17  
WFNJ

## WORK FIRST NEW JERSEY STATISTICAL SUMMARY

### SEPTEMBER 2017

COUNTY	EMPLOYMENT DIRECTED ACTIVITIES			EMPLOYED OPEN (WFNJ RECIPIENT)	SUPPORT SERVICES ON ACTIVE CASE		CLOSED FOR EMPLOYMENT THIS MONTH	POST ASSISTANCE CHILD CARE
	CWEP	ALL	JOB		CHILD CARE	TRAINING REL. EXPENSES		
		OTHER TRAINING	SEARCH					
<b>ATLANTIC</b>	100	143	36	125	43	298	22	66
<b>BERGEN</b>	50	2	51	16	27	28	9	65
<b>BURLINGTON</b>	82	20	40	81	71	70	7	133
<b>CAMDEN</b>	222	124	13	229	225	297	43	272
<b>CAPE MAY</b>	2	7	2	9	1	8	6	22
<b>CUMBERLAND</b>	50	51	44	42	22	60	8	53
<b>ESSEX</b>	426	489	97	340	334	584	72	501
<b>GLOUCESTER</b>	19	16	3	28	9	21	8	45
<b>HUDSON</b>	123	305	16	169	164	400	31	288
<b>HUNTERDON</b>	1	0	4	1	3	0	1	4
<b>MERCER</b>	134	59	107	123	87	114	18	128
<b>MIDDLESEX</b>	41	19	46	52	30	40	12	102
<b>MONMOUTH</b>	34	13	27	58	57	52	3	67
<b>MORRIS</b>	10	0	26	10	10	9	4	18
<b>OCEAN</b>	7	83	0	20	23	23	9	91
<b>PASSAIC</b>	341	277	37	152	214	245	24	164
<b>SALEM</b>	2	15	9	13	5	5	1	12
<b>SOMERSET</b>	47	15	14	28	15	33	4	37
<b>SUSSEX</b>	11	1	2	6	5	0	1	12
<b>UNION</b>	279	82	6	48	65	132	13	121
<b>WARREN</b>	16	3	3	23	18	3	4	25
<b>STATE</b>	<b>1,997</b>	<b>1,724</b>	<b>583</b>	<b>1,573</b>	<b>1,428</b>	<b>2,422</b>	<b>300</b>	<b>2,226</b>

Data is derived from NJ Division of Family Development's FAMIS Reports RM064-01 &amp; RM703-51, AdHoc Reports 5549 &amp; 5598 and SDW Report WR00022WZ\_CC

**DIVISION OF FAMILY DEVELOPMENT CURRENT PROGRAM STATISTICS  
SEPTEMBER 2017**

## **ACRONYMS**

**EMERGENCY ASSISTANCE (EA)** - Payments to those eligible for WFNJ/TANF or WFNJ/GA, authorized during the 30 consecutive days immediately following the emergency (defined as a substantial loss of shelter, food, clothing, or household furnishings by fire, flood or other similar disaster) or if eligible individual or family is in an imminent or actual state of homelessness.

**NJ SNAP** - Formerly the Food Stamp Program, now known as **NJ SNAP** (NJ Supplemental Nutrition Assistance Program) authorized by Congress as a nutritional supplement program to provide low income households with more food of greater variety and better nutrition. Program eligibility is based on household income, resources, and expenses for medical, shelter, and dependent care. CWA staff refers certain recipients to the New Jersey Department of Labor for participation in the Food Stamp Employment and Training Program.

**FAMIS:** Family Assistance Management Information System

**GAAS:** General Assistance Automated System

**NJKIDS:** New Jersey Kids Deserve Support (Child Support Information Management System)

**NJ MMIS SHARED DATA WAREHOUSE:** The Shared Data Warehouse (SDW) is the repository for New Jersey's DFD and Medicaid data. Since 2003, OptumInsight has administered the SDW and provided access to the data through a reporting tool known as Business Objects.

**OMEGA:** Online Management of Economic Goal Achievement

**SSI-EA:** Supplemental Security Income-Emergency Assistance

**WFNJ:** Work First New Jersey - Fully implemented July 1, 1997, this is New Jersey's welfare reform program which responds to the requirements of the Federal Personal Responsibility and Work Opportunity Reconciliation Act (**PRWORA**) of 1996. PRWORA established Temporary Assistance for Needy Families (**TANF**) as the replacement for AFDC cash assistance. WFNJ includes two segments, **WFNJ/TANF** for families with children, and **WFNJ/GA** (General Assistance) for single adults and couples without dependent children. WFNJ emphasizes achieving self-sufficiency and limits lifetime receipt of financial assistance to a total of five years.

**DIVISION OF FAMILY DEVELOPMENT CURRENT PROGRAM STATISTICS  
SEPTEMBER 2017**

**EXPLANATORY NOTES**

The Department of Human Services Division of Family Development provides basic income and an opportunity to achieve self-sufficiency for individuals and families served by the Division's programs. The Division provides leadership, direction and supervision to those public agencies responsible for administering those programs and plans for and develops policies to promote self-sufficiency.

**WFNJ Statistical Summary (Table 17)**

**Employment Directed Activities (EDA)** - From Activities Summary Report (OMEGA report # RM064). Unduplicated count of persons participating in Community Work Experience Program (CWEP), All Other Training, or Job Search.

**Number of Persons Employed This Month, Still Receiving TANF** Individuals with open "empl" activity on OMEGA. Ad hoc report.

**Participants Receiving Child Care Services** - From Issuance Disbursement Summary (OMEGA report # RM703). Total number of active participants who show receipt of **Child Care**.

**Number of Persons Closed on FAMIS Due to Employment** - From FAMIS report #5549-RM-2.

**Post TANF and Receiving Child Care** - Persons no longer in receipt of TANF but still receiving child care. From Share Data Warehouse Child Care case count based on Child Care payments (SDW report WR00022WZ\_CC).