

NJSDC-P2000-1

NJSDC 2000 CENSUS PUBLICATION

**TOTAL RESIDENT POPULATION
NEW JERSEY, COUNTIES MUNICIPALITIES:
1980, 1990 AND 2000**



State of New Jersey
James E. McGreevey, Governor

New Jersey Department of Labor
Albert G. Kroll, Commissioner

Division of Labor Market and Demographic Research
New Jersey State Data Center
PO Box 388
Trenton, NJ 08625-0388
(609) 292-0076

April 2001

TABLE OF CONTENTS

	Page
NOTES ON DATA AND THE NJSDC/BIDC	1
New Jersey's Census 2000 Population Counts	3
Graph: Change in New Jersey's Population: 1980 to 1990 and 1990 to 2000	8
Table 1. Total Population, New Jersey Counties: 1980, 1990 and 2000	9
Map: New Jersey Population Change: 1980-1990	10
Map: New Jersey Population Change: 1990-2000	11
Table 2: Resident Population of Municipalities by County: 1980, 1990 and 2000	
Atlantic County	12
Bergen County	13
Burlington County	16
Camden County	18
Cape May County	20
Cumberland County	21
Essex County	22
Gloucester County	23
Hudson County	24
Hunterdon County	25
Mercer County	26
Middlesex County	27
Monmouth County	28
Morris County	30
Ocean County	32
Passaic County	34
Salem County	35
Somerset County	36
Sussex County	37
Union County	38
Warren County	39

NOTES ON DATA AND THE NEW JERSEY STATE DATA CENTER

The 2000 Census counts presented in this book are based on the PL94-171 (redistricting) data released on March 8, 2001.

The New Jersey State Data Center

The lead agency of the New Jersey State Data Center (NJSDC) prepared this report. The NJSDC is a cooperative project of the State of New Jersey and the US Census Bureau. Serving data users in the public, private and academic sectors, the NJSDC has three main objectives:

- ❑ To expand access to and use of census and other statistics
- ❑ To provide technical assistance and analytical support in the use of these statistics
- ❑ To provide user training on timely, census-related topics

The NJSDC Network consists of a network of over 120 state, county, regional and local agencies. The lead agency is housed within the Division of Labor Market and Demographic Research, New Jersey Department of Labor. A complete NJSDC contact list can be found on the web at <http://www.state.nj.us/labor/lra/>. Once on the site, click on the NJSDC Logo for more information about the NJSDC.

A variety of statistical reports from State and Federal agencies may be accessed through the NJSDC network. Most statistics are from the US Bureau of the Census' regular and special censuses and surveys. The NJSDC will publish New Jersey data from the 2000 Census of population and housing when they are available on a flow basis. Data from the US Bureau of Labor Statistics, Bureau of Economic Analysis and the State and sub-state demographic and economic data prepared/compiled by the New Jersey Department of Labor are also available through the NJSDC.

These data are made available in either printed reports or on the Internet. Users of the New Jersey Department of Labor's *Labor Fast Facts* website (<http://www.state.nj.us/labor/lra/>) have access to up-to-date publicly available data for New Jersey in multiple electronic formats.

The Report

This report presents New Jersey resident population by county and municipality from the 1980, 1990 and 2000 Censuses. Changes between 1980 and 1990 and 1990 and 2000 are also included.

PL94-171 (Redistricting) Data

The objective of the redistricting data is to meet the requirements of Public Law 94-171. Under the provisions of the law, the Census Bureau was required to provide each governor and the majority and minority leaders of each state legislature with Census

2000 population totals for counties, American Indian areas, cities, towns, county subdivisions, census tracts, block groups, and blocks within a year following Census Day (e.g. April 1, 2001). New Jersey also received data for local voting districts, state legislative districts and congressional districts. These Census 2000 Public Law 94-171 Redistricting Data include population totals by race, Hispanic or Latino origin, and voting age.

Data Definitions

Resident Population – Resident population includes those residing in New Jersey but excludes overseas military and federal civilian employees and their dependents living with them. It differs from apportionment population, which is available at the state level only and which includes resident population plus overseas military and federal civilian employees (and their dependents living with them) allocated to their home state, as reported by the federal employing agencies. Apportionment population is used to allocate seats for the House of Representatives to states.

New Jersey's Census 2000 Population Counts

The state's total population reached 8,414,350 as of April 1, 2000, which allowed New Jersey to maintain its number nine ranking in population among the nation's fifty states. The increase of 684,162 residents in New Jersey since the 1990 census represented a faster rate of growth (8.9%) than in the 1980s (5.0%) and earned the state a 33rd ranking nationally in 1990 to 2000 growth rates. The nation's total population rose 13.2 percent between 1990 and 2000 to a total of 281,421,906.

County and Regional Highlights

Somerset was the fastest growing county, while Middlesex added the most residents.

According to the 2000 Census, Somerset County had the highest rate of population growth in New Jersey from 1990 to 2000 with a 23.8 percent increase, which was substantially greater than the 8.9 percent statewide rate. Ten other New Jersey counties experienced higher than statewide growth rates during the 1990-00 period: Ocean (17.9%), Hunterdon (13.2%), Atlantic (12.6%), Warren (11.8%), Middlesex (11.7%), Morris (11.6%), Monmouth (11.2%), Gloucester (10.7%), Hudson (10.1%) and Sussex (10.1%).

Middlesex County had the largest net population increase (+78,382) in the state from 1990 to 2000, followed by Ocean (+77,713), Monmouth (+62,177), Bergen (+58,738), Somerset (+57,211) and Hudson (+55,876) counties. Together, these six counties accounted for almost 60 percent of the state's total population growth.

Bergen County remained the populous county in New Jersey.

With 884,118 residents, Bergen County still had the largest population of any county in the state. Salem County remained the least populous county. With 64,285 residents, Salem was the only county that had less than 100,000 residents, and the only New Jersey county to lose population — down by about 1,000 residents (or -1.5%).

Population rebounded in the industrialized northeastern counties during the 1990s.

The six industrialized counties (Bergen, Essex, Hudson, Morris, Passaic and Union) in the state's northeastern region experienced population declines during the 1980s (-2.4%). This region's total population increased 6.9 percent from 1990 to 2000. In fact, all counties in this region gained population during the 1990s. Essex County lost 73,098 (or 8.6%) of its residents during the 1980s but had a net population gain of 15,427 (or 2.0%) during the 1990s. Bergen (-2.4%), Hudson (-0.7%) and Union (-2.0%) counties also lost population in the 1980s but experienced substantial population growth during the 1990s (Bergen +7.1%, Hudson +10.1%, Union +5.8%). The annual rate of population growth accelerated in Morris and Passaic counties from 3.4 percent and 1.2 percent in the 1980s to 11.6 percent and 7.9 percent, respectively, in the 1990s.

Rural northwestern counties outpaced statewide growth.

Sussex (+10.1%) and Warren (+11.8%) counties in the state's northwestern region experienced significant gains in population from 1990 to 2000. The rate of population growth was faster in Sussex County (+12.8% vs. Warren's +8.5%) in the 1980s but was faster in Warren County during the 1990s. The region's substantial rate of population growth (11.0% in the 1980s and 10.8% in the 1990s), however, was based on a relatively small population. Approximately 3 percent of New Jersey's total population resided in these two counties as of 2000.

Coastal region remained the population magnet of New Jersey.

Four counties along the state's Atlantic Ocean coast — Atlantic, Cape May, Monmouth and Ocean — had the highest population growth during both the 1980s (16.0%) and the 1990s (13.4%) among the state's five geographic regions. These four counties accounted for more than one-quarter (25.6%) of the state's 1990-2000 population increase. Ocean County was the state's fastest growing county during the 1980s (+25.2%). Its population growth rate slowed down somewhat from 1990 to 2000 (+17.9%). Population growth rate in Monmouth County accelerated from 9.9 percent in the 1980s to 11.2 percent in the 1990s. Both Atlantic and Cape May counties had a 15.6 percent growth between 1980 and 1990. Their rates of population growth between 1990 and 2000 were 12.6 percent and 7.6 percent, respectively.

Foreign immigrants fueled population growth in central counties.

Population growth in the state's central counties (Hunterdon, Mercer, Middlesex and Somerset) continued to outpace the state as a whole, although the region's 13.0 percent rate of growth during the 1990s was somewhat lower than the coastal region (13.4%). From 1990 and 2000, the region accounted for about 25.5 percent of the state's total population growth. Somerset (23.8%) and Hunterdon (13.2%) counties were the first and third fastest growing counties in New Jersey from 1990 to 2000. Their 1980s' growth rates (Hunterdon 23.4% and Somerset 18.3%) ranked the 2nd and 3rd in the state. The rate of population growth accelerated in Mercer County (from 5.8% in the 1980s to 7.7% in the 1990s) but decelerated slightly in Middlesex County (from 12.7% in the 1980s to 11.7% in the 1990s). Although not available from 2000 Census data so far, it is likely that much of the region's population growth during the 1990s was attributable to its gain from international immigration. Both Mercer and Middlesex counties received sizable influxes of foreign immigrants during the 1990s. It is likely that Somerset County had substantial gains from both international and domestic migration.

Population grew moderately in southern counties.

The population growth rate in the four New Jersey counties that are part of the Philadelphia Metropolitan Area (Burlington, Camden, Gloucester and Salem) and their southern neighbor, Cumberland County was 5.0 percent between 1990 and 2000, down from the 1980s' 8.1 percent. Gloucester County (+10.7% in the 1990s, +15.1% in the 1980s) and Burlington County (+7.2% in the 1990s, +9.0% in the 1980s) continued to lead the southern region's population growth. It is likely that both counties gained population from both domestic and international migration. Camden (+1.2% in the 1990s, +6.6% in the 1980s) and Cumberland (+6.1% in the 1990s, +3.9% in the 1980s) had moderate

population growth while Salem County (-1.5% in the 1990s, +1.0% in the 1980s) experienced a decline of approximately 1,000 residents.

Municipal Highlights

Municipalities with populations between 10,000 and 50,000 grew fastest.

During the 1990s, New Jersey municipalities with populations greater than 10,000 but less than 50,000 grew at a faster rate (11.7%) than their larger and smaller counterparts. Approximately 53 percent of New Jerseyans resided in the 210 municipalities that constituted this group as of 2000. They accounted for more than two-thirds (68.8%) of the state's total population growth between 1990 and 2000. Suburban townships in the state's central and coastal counties (e.g., Middlesex County's South Brunswick Township; Somerset County's Bridgewater Township and Montgomery Township; Ocean County's Jackson Township and Stafford Township; and Monmouth County's Howell Township) led population growth in this group during the decade of 1990s.

Population continued to grow in three major cities.

Total population in the state's four largest cities (with 100,000 residents or more) increased 3.8 percent during the period. Newark City's net loss of 1,675 residents (or -0.6%) between 1990 and 2000 was substantially lower than its 1980s' loss (-54,027 or -16.4%). Jersey City, Paterson City and Elizabeth City (New Jersey's 2nd, 3rd and 4th largest cities, respectively) continued their moderate population growth in the 1990s. The other two major cities in the state's central and southern regions lost population from 1990 to 2000: Trenton City repeated its 1980s' population decline (-3.7%) in the 1990s, while Camden City experienced a population decline of -8.7 percent during the 1990s, down from +3.0 percent growth during the 1980s.

Lakewood Township had the largest population gain in the state.

With a net increase of 15,304 residents, Lakewood Township, Ocean County added more population than any other municipality in New Jersey during the 1990s. Six other municipalities (Ocean's Dover Township, Middlesex's South Brunswick Township, Hudson's Jersey City, Union's Elizabeth City, Camden's Gloucester Township and Somerset's Bridgewater Township) gained more than 10,000 population during the 1990s. Another 39 municipalities in the state had net population growth of 5,000 or more in the same period. Most of them were suburban townships in Hudson, Middlesex, Monmouth and Somerset counties.

Thirteen New Jersey municipalities lost more than 1,000 residents between 1990 and 2000.

With a net loss of 7,588 residents, Camden City had the largest population decline in the state during the 1990s although it had a moderate population growth (+2,582) in the 1980s. Five other municipalities also had gained population during the 1980s but experienced population declines of 1,000 or more from 1990 to 2000: Burlington County's Wrightstown Borough, Pemberton Township and North Hanover Township; Monmouth County's Middletown Township; and Camden County's Lindenwold Borough. The population decline of Essex County's East Orange City and Newark City; Burlington County's Willingboro Township; Mercer County's Trenton City; Camden County's

Bellmawr Borough and Gloucester City; and Salem County's Salem City was a continuation of their 1980s' trend.

Greenwich Township was the fastest growing municipality.

At 129.9%, Warren County's Greenwich Township had the highest rate of population growth among the state's 566 municipalities between 1990 and 2000. Gloucester County's Woolwich Township was the only other municipality which doubled (+107.8%) its population during the 1990s. Population in nine other municipalities increased more than 50 percent in the same period. Most of these fast growing municipalities (9 out of 11) were small townships and boroughs with less than 10,000 residents in 1990: Harrison Township, Gloucester County; Montgomery Township, Somerset County; Millstone Township, Monmouth County; Washington Township, Mercer County; Lumberton Township, Burlington County; Edgewater Borough, Bergen County; and Helmetta Borough, Middlesex County as well as the aforementioned Greenwich Township and Woolwich Township. Stafford Township, Ocean County and Burlington Township, Burlington County were the largest municipalities (populations in 2000 of 22,532 and 20,294 respectively) that had more than a 50 percent growth rate in the decade.

Eleven municipalities lost more than fifteen percent of their residents.

The majority of these rapid declining municipalities are located in the southern regions' Burlington County (Wrightstown Borough, Woodland Township, North Hanover Township, Washington Township) and Camden County (Tavistock Borough and Laurel Springs Borough). The other municipalities in this group are: Walpack Township, Sussex County; Loch Arbour Village, Monmouth County; Netcong Borough; Morris County; Teterboro Borough, Bergen County; and Lakehurst Borough, Ocean County. All of them are small municipalities with less than 10,000 residents.

Newark City was still the most populous municipality.

Despite its population decline, the City of Newark in Essex County was still the state's most populous municipality with 273,546 residents as of 2000. Hudson County's Jersey City (population 240,055) was the second largest city, followed by Passaic County's Paterson City (population 149,222) and Union County's Elizabeth City (population 120,568). No other municipalities in New Jersey had more than 100,000 residents since 1980.

There were changes in the rank order of the state's ten most populous municipalities since 1990. In 2000, Edison Township of Middlesex County replaced Woodbridge Township (of the same county) as the state's fifth largest municipality. Dover Township of Ocean County had the steepest upward mobility from 10th in 1990 to 7th in 2000. Hamilton Township of Mercer County also moved up (from 9th to 8th) during the period while Trenton City (Mercer County) and Camden City (Camden County) moved down to the 9th and 10th positions from the 7th and 8th, respectively.

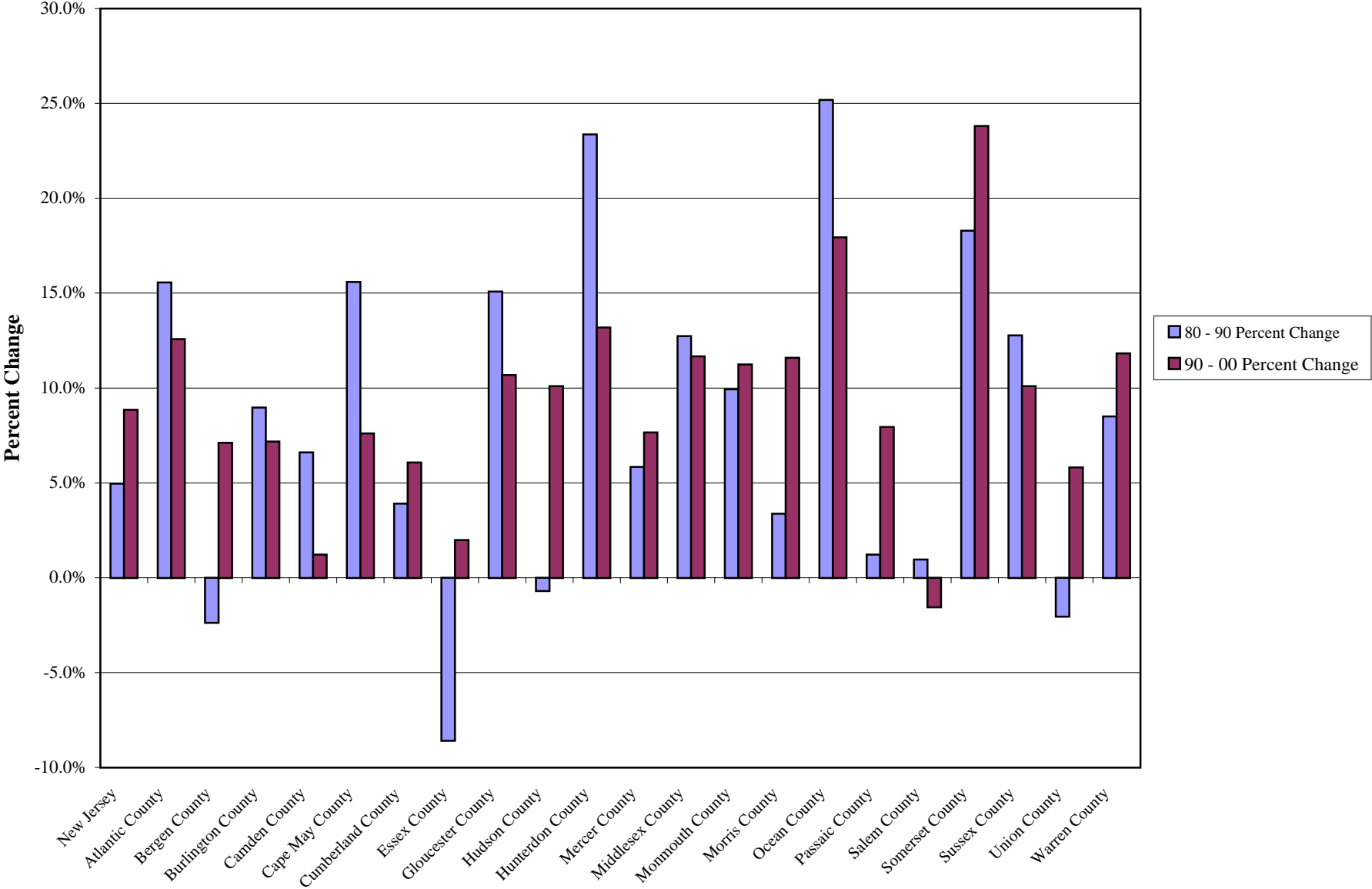
Mid-size cities fared well in the 1990-2000 decade.

There were 12 cities with 35,000 residents or more but were not large enough to be the state's top ten municipalities. Population of five cities in this group rebounded during the 1990s from their decline of the 1980s: Passaic County's Clifton City (+9.7%); Hudson County's Bayonne City (+0.6%); Atlantic County's Atlantic City (+6.7%); Union County's Linden City (+7.3%) and Hudson County's Hoboken City (+15.5%). The other six cities accelerated their population growth from 1990 to 2000: Passaic County's Passaic City (+16.9%), Hudson County's Union City (+15.6%), Cumberland County's Vineland City (+2.7%), Middlesex County's New Brunswick City (+16.5%), Union County's Plainfield City (+2.7%) and Bergen County's Hackensack City (+15.2%). Essex County's East Orange City was the only city in this group that still had a declining number of residents during the 1990s (-5.1%). However, its rate of population decline was slower than in the 1980s (-5.6%).

Four smallest municipalities still had less than 100 residents.

Bergen County's Teterboro Borough (population: 18); Camden County's Pine Valley Borough (population: 20) and Tavistock Borough (population: 24); and Sussex County's Walpack Township (population: 41) were the state's smallest municipalities in 2000. Together with Cape May County's Cape May Point Borough (population: 241), Monmouth County's Loch Arbour Village (population: 380), Ocean County's Harvey Cedars Borough (population: 359), Bergen County's Rockleigh Borough (population: 391), Somerset County's Millstone Borough (population: 410) and Ocean County's Mantoloking Borough (population: 423), they constituted the state's ten least populous municipalities as of April 2000. Millstone Borough was the only new entrant to this group. It ranked 12th in 1990.

Change in New Jersey's Population: 1980 to 1990 and 1990 to 2000



New Jersey and Counties

Source: US Bureau of the Census: 1980, 1990 and 2000 Censuses of Population and Housing

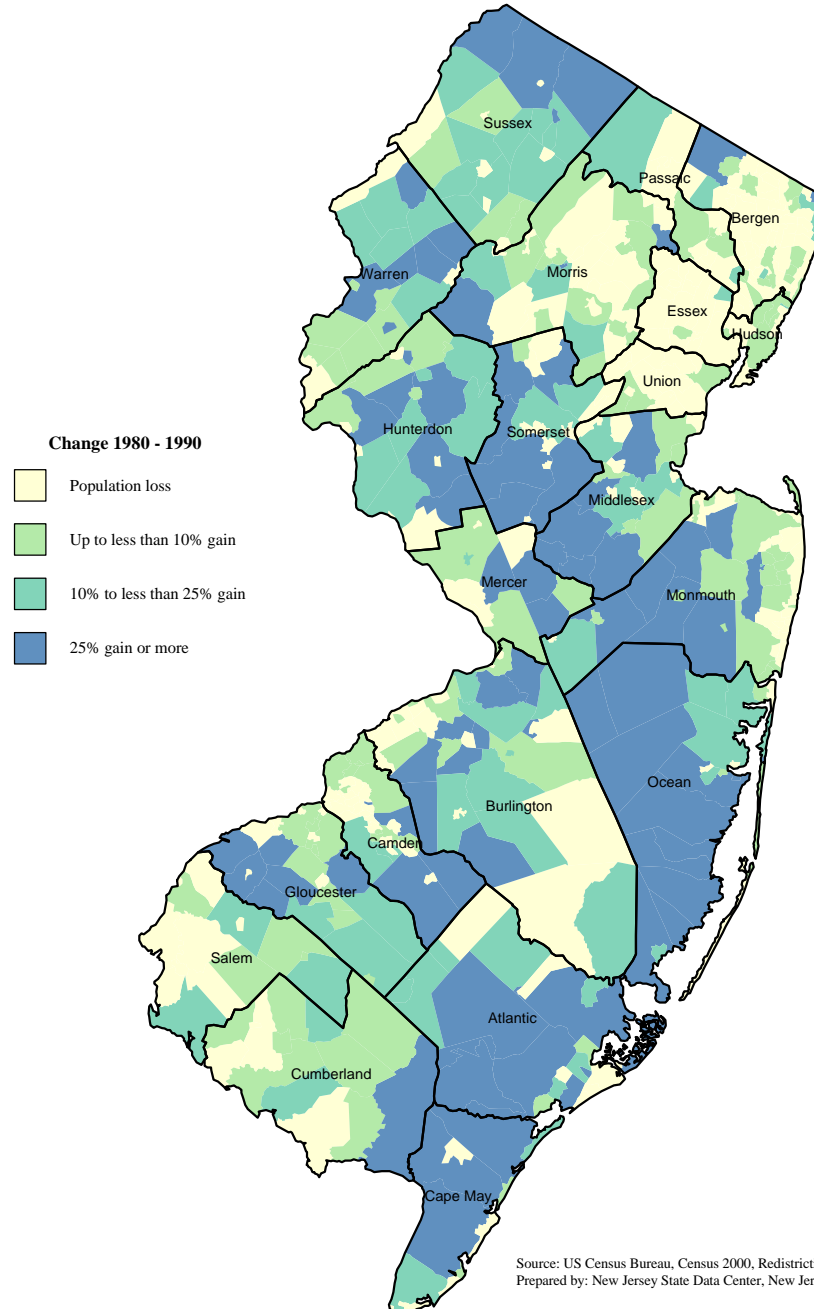
Table 1. Total Population, New Jersey Counties: 1980, 1990 and 2000

New Jersey Counties	Total Population			Population Change			
	Census	Census	Census	1980-1990		1990-2000	
	1980	1990	2000	Numbe	Percent	Numl	Percent
STATE TOTAL	7,365,011	7,730,188	8,414,350	365,177	5.0%	684,162	8.9%
Atlantic County	194,119	224,327	252,552	30,208	15.6%	28,225	12.6%
Bergen County	845,385	825,380	884,118	-20,005	-2.4%	58,738	7.1%
Burlington County	362,542	395,066	423,394	32,524	9.0%	28,328	7.2%
Camden County	471,650	502,824	508,932	31,174	6.6%	6,108	1.2%
Cape May County	82,266	95,089	102,326	12,823	15.6%	7,237	7.6%
Cumberland Count	132,866	138,053	146,438	5,187	3.9%	8,385	6.1%
Essex County	851,304	778,206	793,633	-73,098	-8.6%	15,427	2.0%
Gloucester County	199,917	230,082	254,673	30,165	15.1%	24,591	10.7%
Hudson County	556,972	553,099	608,975	-3,873	-0.7%	55,876	10.1%
Hunterdon County	87,361	107,776	121,989	20,415	23.4%	14,213	13.2%
Mercer County	307,863	325,824	350,761	17,961	5.8%	24,937	7.7%
Middlesex County	595,893	671,780	750,162	75,887	12.7%	78,382	11.7%
Monmouth County	503,173	553,124	615,301	49,951	9.9%	62,177	11.2%
Morris County	407,630	421,353	470,212	13,723	3.4%	48,859	11.6%
Ocean County	346,038	433,203	510,916	87,165	25.2%	77,713	17.9%
Passaic County	447,585	453,060	489,049	5,475	1.2%	35,989	7.9%
Salem County	64,676	65,294	64,285	618	1.0%	-1,009	-1.5%
Somerset County	203,129	240,279	297,490	37,150	18.3%	57,211	23.8%
Sussex County	116,119	130,943	144,166	14,824	12.8%	13,223	10.1%
Union County	504,094	493,819	522,541	-10,275	-2.0%	28,722	5.8%
Warren County	84,429	91,607	102,437	7,178	8.5%	10,830	11.8%

Source: US Bureau of the Census: 1980, 1990 and 2000 Censuses of Population and Housing

New Jersey Population Trends

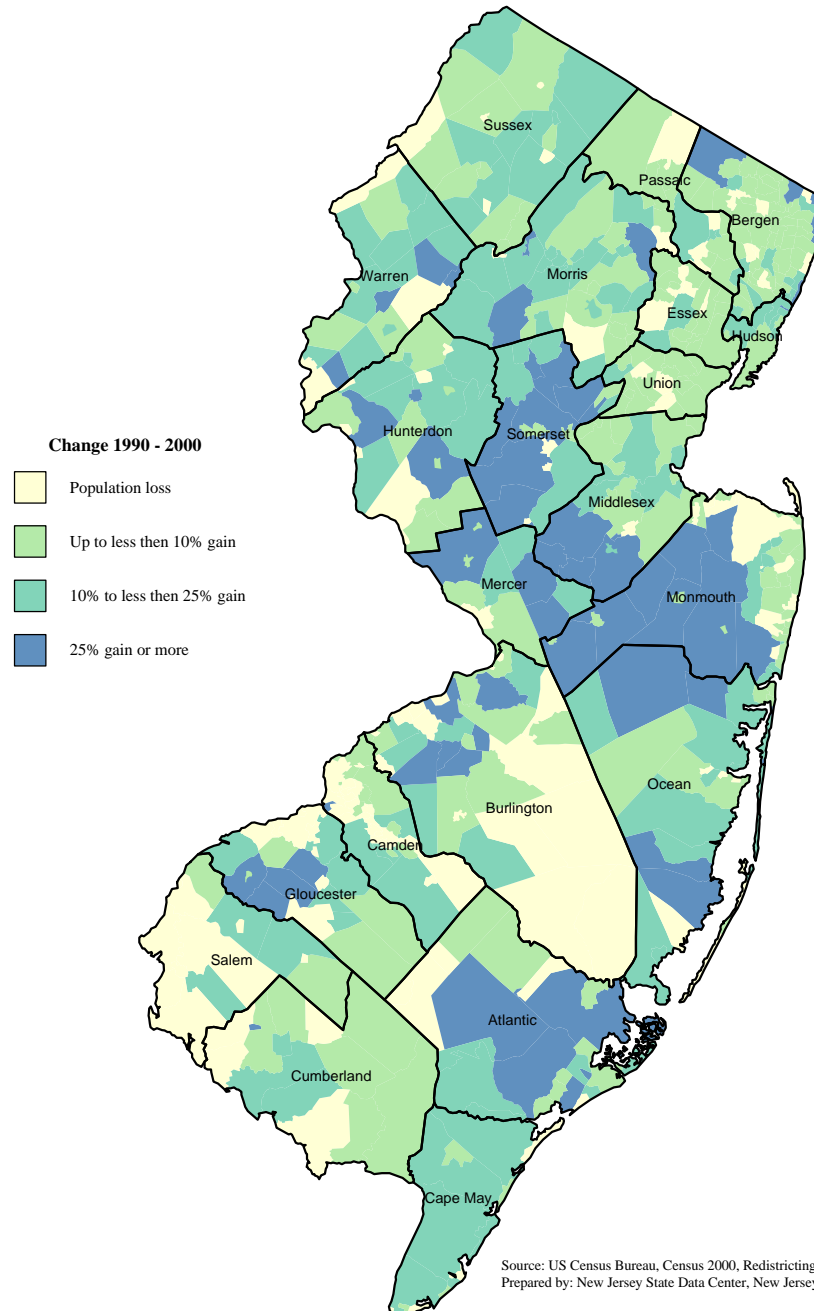
Change in New Jersey's Population from 1980 to 1990



Source: US Census Bureau, Census 2000, Redistricting Data Summary File
Prepared by: New Jersey State Data Center, New Jersey Department of Labor

New Jersey Population Trends

Change in New Jersey's Population from 1990 to 2000



Source: US Census Bureau, Census 2000, Redistricting Data Summary File
Prepared by: New Jersey State Data Center, New Jersey Department of Labor

Table 2: Resident Population of Municipalities by County: 1980, 1990 and 2000
Atlantic County & Municipalities

ATLANTIC County Municipalities	Total Population			Population Change			
	Census	Census	Census	1980-1990		1990-2000	
	1980	1990	2000	Number	Percent	Number	Percent
Absecon city	6,859	7,298	7,638	439	6.4%	340	4.7%
Atlantic City city	40,199	37,986	40,517	-2,213	-5.5%	2,531	6.7%
Brigantine city	8,318	11,354	12,594	3,036	36.5%	1,240	10.9%
Buena borough	3,642	4,441	3,873	799	21.9%	-568	-12.8%
Buena Vista township	6,959	7,655	7,436	696	10.0%	-219	-2.9%
Corbin City city	254	412	468	158	62.2%	56	13.6%
Egg Harbor township	19,381	24,544	30,726	5,163	26.6%	6,182	25.2%
Egg Harbor City city	4,618	4,583	4,545	-35	-0.8%	-38	-0.8%
Estell Manor city	848	1,404	1,585	556	65.6%	181	12.9%
Folsom borough	1,892	2,181	1,972	289	15.3%	-209	-9.6%
Galloway township	12,176	23,330	31,209	11,154	91.6%	7,879	33.8%
Hamilton township	9,499	16,012	20,499	6,513	68.6%	4,487	28.0%
Hammonton town	12,298	12,208	12,604	-90	-0.7%	396	3.2%
Linwood city	6,144	6,866	7,172	722	11.8%	306	4.5%
Longport borough	1,249	1,224	1,054	-25	-2.0%	-170	-13.9%
Margate City city	9,179	8,431	8,193	-748	-8.1%	-238	-2.8%
Mullica township	5,243	5,896	5,912	653	12.5%	16	0.3%
Northfield city	7,795	7,305	7,725	-490	-6.3%	420	5.7%
Pleasantville city	13,435	16,027	19,012	2,592	19.3%	2,985	18.6%
Port Republic city	837	992	1,037	155	18.5%	45	4.5%
Somers Point city	10,330	11,216	11,614	886	8.6%	398	3.5%
Ventnor City city	11,704	11,005	12,910	-699	-6.0%	1,905	17.3%
Weymouth township	1,260	1,957	2,257	697	55.3%	300	15.3%
TOTAL ATLANTIC COUNTY	194,119	224,327	252,552	30,208	15.6%	28,225	12.6%

Source: US Bureau of the Census: 1980, 1990 and 2000 Censuses of Population and Housing

Table 2: Resident Population of Municipalities by County: 1980, 1990 and 2000
Bergen County & Municipalities

BERGEN County Municipalities	Total Population			Population Change			
	Census	Census	Census	1980-1990		1990-2000	
	1980	1990	2000	Number	Percent	Number	Percent
Allendale borough	5,901	5,900	6,699	-1	0.0%	799	13.5%
Alpine borough	1,549	1,716	2,183	167	10.8%	467	27.2%
Bergenfield borough	25,568	24,458	26,247	-1,110	-4.3%	1,789	7.3%
Bogota borough	8,344	7,824	8,249	-520	-6.2%	425	5.4%
Carlstadt borough	6,166	5,510	5,917	-656	-10.6%	407	7.4%
Cliffside Park borough	21,464	20,393	23,007	-1,071	-5.0%	2,614	12.8%
Closter borough	8,164	8,094	8,383	-70	-0.9%	289	3.6%
Cresskill borough	7,609	7,558	7,746	-51	-0.7%	188	2.5%
Demarest borough	4,963	4,800	4,845	-163	-3.3%	45	0.9%
Dumont borough	18,334	17,187	17,503	-1,147	-6.3%	316	1.8%
East Rutherford borough	7,849	7,902	8,716	53	0.7%	814	10.3%
Edgewater borough	4,628	5,001	7,677	373	8.1%	2,676	53.5%
Elmwood Park borough	18,377	17,623	18,925	-754	-4.1%	1,302	7.4%
Emerson borough	7,793	6,930	7,197	-863	-11.1%	267	3.9%
Englewood city	23,701	24,850	26,203	1,149	4.8%	1,353	5.4%
Englewood Cliffs borough	5,698	5,634	5,322	-64	-1.1%	-312	-5.5%
Fair Lawn borough	32,229	30,548	31,637	-1,681	-5.2%	1,089	3.6%
Fairview borough	10,519	10,733	13,255	214	2.0%	2,522	23.5%
Fort Lee borough	32,449	31,997	35,461	-452	-1.4%	3,464	10.8%
Franklin Lakes borough	8,769	9,873	10,422	1,104	12.6%	549	5.6%
Garfield city	26,803	26,727	29,786	-76	-0.3%	3,059	11.4%
Glen Rock borough	11,497	10,883	11,546	-614	-5.3%	663	6.1%
Hackensack city	36,039	37,049	42,677	1,010	2.8%	5,628	15.2%
Harrington Park borough	4,532	4,623	4,740	91	2.0%	117	2.5%
Hasbrouck Heights borough	12,166	11,488	11,662	-678	-5.6%	174	1.5%
Haworth borough	3,509	3,384	3,390	-125	-3.6%	6	0.2%
Hillsdale borough	10,495	9,750	10,087	-745	-7.1%	337	3.5%
Ho-Ho-Kus borough	4,129	3,935	4,060	-194	-4.7%	125	3.2%
Leonia borough	8,027	8,365	8,914	338	4.2%	549	6.6%
Little Ferry borough	9,399	9,989	10,800	590	6.3%	811	8.1%

(continued)

Table 2: Resident Population of Municipalities by County: 1980, 1990 and 2000
Bergen County & Municipalities

BERGEN County Municipalities	Total Population			Population Change			
	Census	Census	Census	1980-1990		1990-2000	
	1980	1990	2000	Number	Percent	Number	Percent
Lodi borough	23,956	22,355	23,971	-1,601	-6.7%	1,616	7.2%
Lyndhurst township	20,326	18,262	19,383	-2,064	-10.2%	1,121	6.1%
Mahwah township	12,127	17,905	24,062	5,778	47.6%	6,157	34.4%
Maywood borough	9,895	9,473	9,523	-422	-4.3%	50	0.5%
Midland Park borough	7,381	7,047	6,947	-334	-4.5%	-100	-1.4%
Montvale borough	7,318	6,946	7,034	-372	-5.1%	88	1.3%
Moonachie borough	2,706	2,817	2,754	111	4.1%	-63	-2.2%
New Milford borough	16,876	15,990	16,400	-886	-5.3%	410	2.6%
North Arlington borough	16,587	13,790	15,181	-2,797	-16.9%	1,391	10.1%
Northvale borough	5,046	4,563	4,460	-483	-9.6%	-103	-2.3%
Norwood borough	4,413	4,858	5,751	445	10.1%	893	18.4%
Oakland borough	13,443	11,997	12,466	-1,446	-10.8%	469	3.9%
Old Tappan borough	4,168	4,254	5,482	86	2.1%	1,228	28.9%
Oradell borough	8,658	8,024	8,047	-634	-7.3%	23	0.3%
Palisades Park borough	13,732	14,536	17,073	804	5.9%	2,537	17.5%
Paramus borough	26,474	25,067	25,737	-1,407	-5.3%	670	2.7%
Park Ridge borough	8,515	8,102	8,708	-413	-4.9%	606	7.5%
Ramsey borough	12,899	13,228	14,351	329	2.6%	1,123	8.5%
Ridgefield borough	10,294	9,996	10,830	-298	-2.9%	834	8.3%
Ridgefield Park village	12,738	12,454	12,873	-284	-2.2%	419	3.4%
Ridgewood village	25,208	24,152	24,936	-1,056	-4.2%	784	3.2%
River Edge borough	11,111	10,603	10,946	-508	-4.6%	343	3.2%
River Vale township	9,489	9,410	9,449	-79	-0.8%	39	0.4%
Rochelle Park township	5,603	5,587	5,528	-16	-0.3%	-59	-1.1%
Rockleigh borough	192	270	391	78	40.6%	121	44.8%
Rutherford borough	19,068	17,790	18,110	-1,278	-6.7%	320	1.8%
Saddle Brook township	14,084	13,296	13,155	-788	-5.6%	-141	-1.1%
Saddle River borough	2,763	2,950	3,201	187	6.8%	251	8.5%
South Hackensack township	2,229	2,106	2,249	-123	-5.5%	143	6.8%
Teaneck township	39,007	37,825	39,260	-1,182	-3.0%	1,435	3.8%

(continued)

**Table 2: Resident Population of Municipalities by County 1980, 1990 & 2000
Bergen County & Municipalities**

BERGEN County Municipalities	Total Population			Population Change			
	Census	Census	Census	1980-1990		1990-2000	
	1980	1990	2000	Number	Percent	Number	Percent
Tenaflly borough	13,552	13,326	13,806	-226	-1.7%	480	3.6%
Teterboro borough	19	22	18	3	15.8%	-4	-18.2%
Upper Saddle River borough	7,958	7,198	7,741	-760	-9.6%	543	7.5%
Waldwick borough	10,802	9,757	9,622	-1,045	-9.7%	-135	-1.4%
Wallington borough	10,741	10,828	11,583	87	0.8%	755	7.0%
Washington township	9,550	9,245	8,938	-305	-3.2%	-307	-3.3%
Westwood borough	10,714	10,446	10,999	-268	-2.5%	553	5.3%
Woodcliff Lake borough	5,644	5,303	5,745	-341	-6.0%	442	8.3%
Wood-Ridge borough	7,929	7,506	7,644	-423	-5.3%	138	1.8%
Wyckoff township	15,500	15,372	16,508	-128	-0.8%	1,136	7.4%
TOTAL, BERGEN COUNTY	845,385	825,380	884,118	-20,005	-2.4%	58,738	7.1%

Source: US Bureau of the Census: 1980, 1990 and 2000 Censuses of Population and Housing

**Table 2: Resident Population of Municipalities by County: 1980, 1990 and 2000
Burlington County & Municipalities**

BURLINGTON County Municipalities	Total Population			Population Change			
	Census	Census	Census	1980-1990		1990-2000	
	1980	1990	2000	Number	Percent	Number	Percent
Bass River township	1,344	1,580	1,510	236	17.6%	-70	-4.4%
Beverly city	2,919	2,973	2,661	54	1.8%	-312	-10.5%
Bordentown city	4,441	4,341	3,969	-100	-2.3%	-372	-8.6%
Bordentown township	7,170	7,683	8,380	513	7.2%	697	9.1%
Burlington city	10,246	9,835	9,736	-411	-4.0%	-99	-1.0%
Burlington township	11,527	12,454	20,294	927	8.0%	7,840	63.0%
Chesterfield township	3,867	5,152	5,955	1,285	33.2%	803	15.6%
Cinnaminson township	16,072	14,583	14,595	-1,489	-9.3%	12	0.1%
Delanco township	3,730	3,316	3,237	-414	-11.1%	-79	-2.4%
Delran township	14,811	13,178	15,536	-1,633	-11.0%	2,358	17.9%
Eastampton township	3,814	4,962	6,202	1,148	30.1%	1,240	25.0%
Edgewater Park township	9,273	8,388	7,864	-885	-9.5%	-524	-6.2%
Evesham township	21,508	35,309	42,275	13,801	64.2%	6,966	19.7%
Fieldsboro borough	597	579	522	-18	-3.0%	-57	-9.8%
Florence township	9,084	10,266	10,746	1,182	13.0%	480	4.7%
Hainesport township	3,236	3,249	4,126	13	0.4%	877	27.0%
Lumberton township	5,236	6,705	10,461	1,469	28.1%	3,756	56.0%
Mansfield township	2,523	3,874	5,090	1,351	53.5%	1,216	31.4%
Maple Shade township	20,525	19,211	19,079	-1,314	-6.4%	-132	-0.7%
Medford township	17,622	20,526	22,253	2,904	16.5%	1,727	8.4%
Medford Lakes borough	4,958	4,462	4,173	-496	-10.0%	-289	-6.5%
Moorestown township	15,596	16,116	19,017	520	3.3%	2,901	18.0%
Mount Holly township	10,818	10,639	10,728	-179	-1.7%	89	0.8%
Mount Laurel township	17,614	30,270	40,221	12,656	71.9%	9,951	32.9%
New Hanover township	14,258	9,546	9,744	-4,712	-33.0%	198	2.1%
North Hanover township	9,050	9,994	7,347	944	10.4%	-2,647	-26.5%
Palmyra borough	7,085	7,056	7,091	-29	-0.4%	35	0.5%
Pemberton borough	1,198	1,367	1,210	169	14.1%	-157	-11.5%
Pemberton township	29,720	31,342	28,691	1,622	5.5%	-2,651	-8.5%
Riverside township	7,941	7,974	7,911	33	0.4%	-63	-0.8%

(continued)

**Table 2: Resident Population of Municipalities by County: 1980, 1990 and 2000
Burlington County & Municipalities**

BURLINGTON County Municipalities	Total Population			Population Change			
	Census	Census	Census	1980-1990		1990-2000	
	1980	1990	2000	Number	Percent	Number	Percent
Riverton borough	3,068	2,775	2,759	-293	-9.6%	-16	-0.6%
Shamong township	4,537	5,765	6,462	1,228	27.1%	697	12.1%
Southampton township	8,808	10,202	10,388	1,394	15.8%	186	1.8%
Springfield township	2,691	3,028	3,227	337	12.5%	199	6.6%
Tabernacle township	6,236	7,360	7,170	1,124	18.0%	-190	-2.6%
Washington township	808	805	621	-3	-0.4%	-184	-22.9%
Westampton township	3,383	6,004	7,217	2,621	77.5%	1,213	20.2%
Willingboro township	39,912	36,291	33,008	-3,621	-9.1%	-3,283	-9.0%
Woodland township	2,285	2,063	1,170	-222	-9.7%	-893	-43.3%
Wrightstown borough	3,031	3,843	748	812	26.8%	-3,095	-80.5%
TOTAL, BURLINGTON COUNTY	362,542	395,066	423,394	32,524	9.0%	28,328	7.2%

Source: US Bureau of the Census: 1980, 1990 and 2000 Censuses of Population and Housing

**Table 2: Resident Population of Municipalities by County: 1980, 1990 and 2000
Camden County & Municipalities**

CAMDEN County Municipalities	Total Population			Population Change			
	Census	Census	Census	1980-1990		1990-2000	
	1980	1990	2000	Number	Percent	Number	Percent
Audubon borough	9,533	9,205	9,182	-328	-3.4%	-23	-0.2%
Audubon Park borough	1,274	1,150	1,102	-124	-9.7%	-48	-4.2%
Barrington borough	7,418	6,774	7,084	-644	-8.7%	310	4.6%
Bellmawr borough	13,721	12,603	11,262	-1,118	-8.1%	-1,341	-10.6%
Berlin borough	5,786	5,672	6,149	-114	-2.0%	477	8.4%
Berlin township	5,348	5,466	5,290	118	2.2%	-176	-3.2%
Brooklawn borough	2,133	1,805	2,354	-328	-15.4%	549	30.4%
Camden city	84,910	87,492	79,904	2,582	3.0%	-7,588	-8.7%
Cherry Hill township	68,785	69,348	69,965	563	0.8%	617	0.9%
Chesilhurst borough	1,590	1,526	1,520	-64	-4.0%	-6	-0.4%
Clementon borough	5,764	5,601	4,986	-163	-2.8%	-615	-11.0%
Collingswood borough	15,838	15,289	14,326	-549	-3.5%	-963	-6.3%
Gibbsboro borough	2,510	2,383	2,435	-127	-5.1%	52	2.2%
Gloucester township	45,156	53,797	64,350	8,641	19.1%	10,553	19.6%
Gloucester City city	13,121	12,649	11,484	-472	-3.6%	-1,165	-9.2%
Haddon township	15,875	14,837	14,651	-1,038	-6.5%	-186	-1.3%
Haddonfield borough	12,337	11,628	11,659	-709	-5.7%	31	0.3%
Haddon Heights borough	8,361	7,860	7,547	-501	-6.0%	-313	-4.0%
Hi-Nella borough	1,250	1,045	1,029	-205	-16.4%	-16	-1.5%
Laurel Springs borough	2,249	2,341	1,970	92	4.1%	-371	-15.8%
Lawnside borough	3,042	2,841	2,692	-201	-6.6%	-149	-5.2%
Lindenwold borough	18,196	18,734	17,414	538	3.0%	-1,320	-7.0%
Magnolia borough	4,881	4,861	4,409	-20	-0.4%	-452	-9.3%
Merchantville borough	3,972	4,095	3,801	123	3.1%	-294	-7.2%
Mount Ephraim borough	4,863	4,517	4,495	-346	-7.1%	-22	-0.5%
Oaklyn borough	4,223	4,430	4,188	207	4.9%	-242	-5.5%
Pennsauken township	33,775	34,738	35,737	963	2.9%	999	2.9%
Pine Hill borough	8,684	9,854	10,880	1,170	13.5%	1,026	10.4%
Pine Valley borough	23	19	20	-4	-17.4%	1	5.3%
Runnemede borough	9,461	9,042	8,533	-419	-4.4%	-509	-5.6%

(continued)

**Table 2: Resident Population of Municipalities by County: 1980, 1990 and 2000
Camden County & Municipalities**

CAMDEN County Municipalities	Total Population			Population Change			
	Census	Census	Census	1980-1990		1990-2000	
	1980	1990	2000	Number	Percent	Number	Percent
Somerdale borough	5,900	5,440	5,192	-460	-7.8%	-248	-4.6%
Stratford borough	8,005	7,614	7,271	-391	-4.9%	-343	-4.5%
Tavistock borough	9	35	24	26	288.9%	-11	-31.4%
Voorhees township	12,919	24,559	28,126	11,640	90.1%	3,567	14.5%
Waterford township	8,126	10,940	10,494	2,814	34.6%	-446	-4.1%
Winslow township	20,034	30,087	34,611	10,053	50.2%	4,524	15.0%
Woodlynne borough	2,578	2,547	2,796	-31	-1.2%	249	9.8%
TOTAL, CAMDEN COUNTY	471,650	502,824	508,932	31,174	6.6%	6,108	1.2%

Source: US Bureau of the Census: 1980, 1990 and 2000 Censuses of Population and Housing

Table 2: Resident Population of Municipalities by County: 1980, 1990 and 2000
Cape May County & Municipalities

CAPE MAY County Municipalities	Total Population			Population Change			
	Census	Census	Census	1980-1990		1990-2000	
	1980	1990	2000	Number	Percent	Number	Percent
Avalon borough	2,162	1,809	2,143	-353	-16.3%	334	18.5%
Cape May city	4,853	4,668	4,034	-185	-3.8%	-634	-13.6%
Cape May Point borough	255	248	241	-7	-2.7%	-7	-2.8%
Dennis township	3,989	5,574	6,492	1,585	39.7%	918	16.5%
Lower township	17,105	20,820	22,945	3,715	21.7%	2,125	10.2%
Middle township	11,373	14,771	16,405	3,398	29.9%	1,634	11.1%
North Wildwood city	4,714	5,017	4,935	303	6.4%	-82	-1.6%
Ocean City city	13,949	15,512	15,378	1,563	11.2%	-134	-0.9%
Sea Isle City city	2,644	2,692	2,835	48	1.8%	143	5.3%
Stone Harbor borough	1,187	1,025	1,128	-162	-13.6%	103	10.0%
Upper township	6,713	10,681	12,115	3,968	59.1%	1,434	13.4%
West Cape May borough	1,091	1,026	1,095	-65	-6.0%	69	6.7%
West Wildwood borough	360	453	448	93	25.8%	-5	-1.1%
Wildwood city	4,913	4,484	5,436	-429	-8.7%	952	21.2%
Wildwood Crest borough	4,149	3,631	3,980	-518	-12.5%	349	9.6%
Woodbine borough	2,809	2,678	2,716	-131	-4.7%	38	1.4%
TOTAL, CAPE MAY COUNTY	82,266	95,089	102,326	12,823	15.6%	7,237	7.6%

Source: US Bureau of the Census: 1980, 1990 and 2000 Censuses of Population and Housing

**Table 2: Resident Population of Municipalities by County: 1980, 1990 and 2000
Cumberland County & Municipalities**

CUMBERLAND County Municipalities	Total Population			Population Change			
	Census	Census	Census	1980-1990		1990-2000	
	1980	1990	2000	Number	Percent	Number	Percent
Bridgeton city	18,795	18,942	22,771	147	0.8%	3,829	20.2%
Commercial township	4,674	5,026	5,259	352	7.5%	233	4.6%
Deerfield township	2,523	2,933	2,927	410	16.3%	-6	-0.2%
Downe township	1,803	1,702	1,631	-101	-5.6%	-71	-4.2%
Fairfield township	5,693	5,699	6,283	6	0.1%	584	10.2%
Greenwich township	973	911	847	-62	-6.4%	-64	-7.0%
Hopewell township	4,365	4,215	4,434	-150	-3.4%	219	5.2%
Lawrence township	2,116	2,433	2,721	317	15.0%	288	11.8%
Maurice River township	4,577	6,648	6,928	2,071	45.2%	280	4.2%
Millville city	24,815	25,992	26,847	1,177	4.7%	855	3.3%
Shiloh borough	604	408	534	-196	-32.5%	126	30.9%
Stow Creek township	1,365	1,437	1,429	72	5.3%	-8	-0.6%
Upper Deerfield township	6,810	6,927	7,556	117	1.7%	629	9.1%
Vineland city	53,753	54,780	56,271	1,027	1.9%	1,491	2.7%
TOTAL, CUMBERLAND COUNTY	132,866	138,053	146,438	5,187	3.9%	8,385	6.1%

Source: US Bureau of the Census: 1980, 1990 and 2000 Censuses of Population and Housing

**Table 2: Resident Population of Municipalities by County: 1980, 1990 and 2000
Essex County & Municipalities**

ESSEX County Municipalities	Total Population			Population Change			
	Census	Census	Census	1980-1990		1990-2000	
	1980	1990	2000	Number	Percent	Number	Percent
Belleville township	35,367	34,213	35,928	-1,154	-3.3%	1,715	5.0%
Bloomfield township	47,792	45,061	47,683	-2,731	-5.7%	2,622	5.8%
Caldwell borough	7,624	7,549	7,584	-75	-1.0%	35	0.5%
Cedar Grove township	12,600	12,053	12,300	-547	-4.3%	247	2.0%
City of Orange township	31,136	29,925	32,868	-1,211	-3.9%	2,943	9.8%
East Orange city	77,878	73,552	69,824	-4,326	-5.6%	-3,728	-5.1%
Essex Fells borough	2,363	2,139	2,162	-224	-9.5%	23	1.1%
Fairfield township	7,987	7,615	7,063	-372	-4.7%	-552	-7.2%
Glen Ridge borough	7,855	7,076	7,271	-779	-9.9%	195	2.8%
Irvington township	61,493	61,018	60,695	-475	-0.8%	-323	-0.5%
Livingston township	28,040	26,609	27,391	-1,431	-5.1%	782	2.9%
Maplewood township	22,950	21,652	23,868	-1,298	-5.7%	2,216	10.2%
Millburn township	19,543	18,630	19,765	-913	-4.7%	1,135	6.1%
Montclair township	38,321	37,729	38,977	-592	-1.5%	1,248	3.3%
Newark city	329,248	275,221	273,546	-54,027	-16.4%	-1,675	-0.6%
North Caldwell borough	5,832	6,706	7,375	874	15.0%	669	10.0%
Nutley township	28,998	27,099	27,362	-1,899	-6.5%	263	1.0%
Roseland borough	5,330	4,847	5,298	-483	-9.1%	451	9.3%
South Orange Village township	15,864	16,390	16,964	526	3.3%	574	3.5%
Verona township	14,166	13,597	13,533	-569	-4.0%	-64	-0.5%
West Caldwell township	11,407	10,422	11,233	-985	-8.6%	811	7.8%
West Orange township	39,510	39,103	44,943	-407	-1.0%	5,840	14.9%
TOTAL, ESSEX COUNTY	851,304	778,206	793,633	-73,098	-8.6%	15,427	2.0%

Source: US Bureau of the Census: 1980, 1990 and 2000 Censuses of Population and Housing

**Table 2: Resident Population of Municipalities by County: 1980, 1990 and 2000
Gloucester County & Municipalities**

GLOUCESTER County Municipalities	Total Population			Population Change			
	Census	Census	Census	1980-1990		1990-2000	
	1980	1990	2000	Number	Percent	Number	Percent
Clayton borough	6,013	6,155	7,139	142	2.4%	984	16.0%
Deptford township	23,473	24,137	26,763	664	2.8%	2,626	10.9%
East Greenwich township	4,142	5,258	5,430	1,116	26.9%	172	3.3%
Elk township	3,187	3,806	3,514	619	19.4%	-292	-7.7%
Franklin township	12,396	14,482	15,466	2,086	16.8%	984	6.8%
Glassboro borough	14,574	15,614	19,068	1,040	7.1%	3,454	22.1%
Greenwich township	5,406	5,102	4,879	-304	-5.6%	-223	-4.4%
Harrison township	3,585	4,715	8,788	1,130	31.5%	4,073	86.4%
Logan township	3,078	5,147	6,032	2,069	67.2%	885	17.2%
Mantua township	9,193	10,074	14,217	881	9.6%	4,143	41.1%
Monroe township	21,639	26,703	28,967	5,064	23.4%	2,264	8.5%
National Park borough	3,552	3,413	3,205	-139	-3.9%	-208	-6.1%
Newfield borough	1,563	1,592	1,616	29	1.9%	24	1.5%
Paulsboro borough	6,944	6,577	6,160	-367	-5.3%	-417	-6.3%
Pitman borough	9,744	9,365	9,331	-379	-3.9%	-34	-0.4%
South Harrison township	1,486	1,919	2,417	433	29.1%	498	26.0%
Swedesboro borough	2,031	2,024	2,055	-7	-0.3%	31	1.5%
Washington township	27,878	41,960	47,114	14,082	50.5%	5,154	12.3%
Wenonah borough	2,303	2,331	2,317	28	1.2%	-14	-0.6%
West Deptford township	18,002	19,380	19,368	1,378	7.7%	-12	-0.1%
Westville borough	4,786	4,573	4,500	-213	-4.5%	-73	-1.6%
Woodbury city	10,353	10,904	10,307	551	5.3%	-597	-5.5%
Woodbury Heights borough	3,460	3,392	2,988	-68	-2.0%	-404	-11.9%
Woolwich township	1,129	1,459	3,032	330	29.2%	1,573	107.8%
TOTAL, GLOUCESTER COUNTY	199,917	230,082	254,673	30,165	15.1%	24,591	10.7%

Source: US Bureau of the Census: 1980, 1990 and 2000 Censuses of Population and Housing

**Table 2: Resident Population of Municipalities by County: 1980, 1990 and 2000
Hudson County & Municipalities**

HUDSON County Municipalities	Total Population			Population Change			
	Census	Census	Census	1980-1990		1990-2000	
	1980	1990	2000	Number	Percent	Number	Percent
Bayonne city	65,047	61,444	61,842	-3,603	-5.5%	398	0.6%
East Newark borough	1,923	2,157	2,377	234	12.2%	220	10.2%
Guttenberg town	7,340	8,268	10,807	928	12.6%	2,539	30.7%
Harrison town	12,242	13,425	14,424	1,183	9.7%	999	7.4%
Hoboken city	42,460	33,397	38,577	-9,063	-21.3%	5,180	15.5%
Jersey City city	223,532	228,537	240,055	5,005	2.2%	11,518	5.0%
Kearny town	35,735	34,874	40,513	-861	-2.4%	5,639	16.2%
North Bergen township	47,019	48,414	58,092	1,395	3.0%	9,678	20.0%
Secaucus town	13,719	14,061	15,931	342	2.5%	1,870	13.3%
Union City city	55,593	58,012	67,088	2,419	4.4%	9,076	15.6%
Weehawken township	13,168	12,385	13,501	-783	-5.9%	1,116	9.0%
West New York town	39,194	38,125	45,768	-1,069	-2.7%	7,643	20.0%
TOTAL, HUDSON COUNTY	556,972	553,099	608,975	-3,873	-0.7%	55,876	10.1%

Source: US Bureau of the Census: 1980, 1990 and 2000 Censuses of Population and Housing

**Table 2: Resident Population of Municipalities by County: 1980, 1990 and 2000
Hunterdon County & Municipalities**

HUNTERDON County Municipalities	Total Population			Population Change			
	Census	Census	Census	1980-1990		1990-2000	
	1980	1990	2000	Number	Percent	Number	Percent
Alexandria township	2,798	3,594	4,698	796	28.4%	1,104	30.7%
Bethlehem township	3,045	3,104	3,820	59	1.9%	716	23.1%
Bloomsbury borough	864	890	886	26	3.0%	-4	-0.4%
Califon borough	1,023	1,073	1,055	50	4.9%	-18	-1.7%
Clinton town	1,910	2,054	2,632	144	7.5%	578	28.1%
Clinton township	7,345	10,816	12,957	3,471	47.3%	2,141	19.8%
Delaware township	3,816	4,512	4,478	696	18.2%	-34	-0.8%
East Amwell township	3,468	4,332	4,455	864	24.9%	123	2.8%
Flemington borough	4,132	4,047	4,200	-85	-2.1%	153	3.8%
Franklin township	2,294	2,851	2,990	557	24.3%	139	4.9%
Frenchtown borough	1,573	1,528	1,488	-45	-2.9%	-40	-2.6%
Glen Gardner borough	834	1,665	1,902	831	99.6%	237	14.2%
Hampton borough	1,614	1,515	1,546	-99	-6.1%	31	2.0%
High Bridge borough	3,435	3,886	3,776	451	13.1%	-110	-2.8%
Holland township	4,593	4,892	5,124	299	6.5%	232	4.7%
Kingwood township	2,772	3,325	3,782	553	19.9%	457	13.7%
Lambertville city	4,044	3,927	3,868	-117	-2.9%	-59	-1.5%
Lebanon borough	820	1,036	1,065	216	26.3%	29	2.8%
Lebanon township	5,459	5,679	5,816	220	4.0%	137	2.4%
Milford borough	1,368	1,273	1,195	-95	-6.9%	-78	-6.1%
Raritan township	8,292	15,616	19,809	7,324	88.3%	4,193	26.9%
Readington township	10,855	13,400	15,803	2,545	23.4%	2,403	17.9%
Stockton borough	643	629	560	-14	-2.2%	-69	-11.0%
Tewksbury township	4,094	4,803	5,541	709	17.3%	738	15.4%
Union township	3,971	5,078	6,160	1,107	27.9%	1,082	21.3%
West Amwell township	2,299	2,251	2,383	-48	-2.1%	132	5.9%
TOTAL, HUNTERDON COUNTY	87,361	107,776	121,989	20,415	23.4%	14,213	13.2%

Source: US Bureau of the Census: 1980, 1990 and 2000 Censuses of Population and Housing

**Table 2: Resident Population of Municipalities by County: 1980, 1990 and 2000
Mercer County & Municipalities**

MERCER County Municipalities	Total Population			Population Change			
	Census	Census	Census	1980-1990		1990-2000	
	1980	1990	2000	Number	Percent	Number	Percent
East Windsor township	21,041	22,353	24,919	1,312	6.2%	2,566	11.5%
Ewing township	34,842	34,185	35,707	-657	-1.9%	1,522	4.5%
Hamilton township	82,801	86,553	87,109	3,752	4.5%	556	0.6%
Hightstown borough	4,581	5,126	5,216	545	11.9%	90	1.8%
Hopewell borough	2,001	1,968	2,035	-33	-1.6%	67	3.4%
Hopewell township	10,893	11,590	16,105	697	6.4%	4,515	39.0%
Lawrence township	19,724	25,787	29,159	6,063	30.7%	3,372	13.1%
Pennington borough	2,109	2,537	2,696	428	20.3%	159	6.3%
Princeton borough	12,035	12,016	14,203	-19	-0.2%	2,187	18.2%
Princeton township	13,683	13,198	16,027	-485	-3.5%	2,829	21.4%
Trenton city	92,124	88,675	85,403	-3,449	-3.7%	-3,272	-3.7%
Washington township	3,487	5,815	10,275	2,328	66.8%	4,460	76.7%
West Windsor township	8,542	16,021	21,907	7,479	87.6%	5,886	36.7%
TOTAL, MERCER COUNTY	307,863	325,824	350,761	17,961	5.8%	24,937	7.7%

Source: US Bureau of the Census: 1980, 1990 and 2000 Censuses of Population and Housing

**Table 2: Resident Population of Municipalities by County: 1980, 1990 and 2000
Middlesex County & Municipalities**

MIDDLESEX County Municipalities	Total Population			Population Change			
	Census	Census	Census	1980-1990		1990-2000	
	1980	1990	2000	Number	Percent	Number	Percent
Carteret borough	20,598	19,025	20,709	-1,573	-7.6%	1,684	8.9%
Cranbury township	1,927	2,500	3,227	573	29.7%	727	29.1%
Dunellen borough	6,593	6,528	6,823	-65	-1.0%	295	4.5%
East Brunswick township	37,711	43,548	46,756	5,837	15.5%	3,208	7.4%
Edison township	70,193	88,680	97,687	18,487	26.3%	9,007	10.2%
Helmetta borough	955	1,211	1,825	256	26.8%	614	50.7%
Highland Park borough	13,396	13,279	13,999	-117	-0.9%	720	5.4%
Jamesburg borough	4,114	5,294	6,025	1,180	28.7%	731	13.8%
Metuchen borough	13,762	12,804	12,840	-958	-7.0%	36	0.3%
Middlesex borough	13,480	13,055	13,717	-425	-3.2%	662	5.1%
Milltown borough	7,136	6,968	7,000	-168	-2.4%	32	0.5%
Monroe township	15,858	22,255	27,999	6,397	40.3%	5,744	25.8%
New Brunswick city	41,442	41,711	48,573	269	0.6%	6,862	16.5%
North Brunswick township	22,220	31,287	36,287	9,067	40.8%	5,000	16.0%
Old Bridge township	51,515	56,475	60,456	4,960	9.6%	3,981	7.0%
Perth Amboy city	38,951	41,967	47,303	3,016	7.7%	5,336	12.7%
Piscataway township	42,223	47,089	50,482	4,866	11.5%	3,393	7.2%
Plainsboro township	5,605	14,213	20,215	8,608	153.6%	6,002	42.2%
Sayreville borough	29,969	34,986	40,377	5,017	16.7%	5,391	15.4%
South Amboy city	8,322	7,863	7,913	-459	-5.5%	50	0.6%
South Brunswick township	17,127	25,792	37,734	8,665	50.6%	11,942	46.3%
South Plainfield borough	20,521	20,489	21,810	-32	-0.2%	1,321	6.4%
South River borough	14,361	13,692	15,322	-669	-4.7%	1,630	11.9%
Spotswood borough	7,840	7,983	7,880	143	1.8%	-103	-1.3%
Woodbridge township	90,074	93,086	97,203	3,012	3.3%	4,117	4.4%
TOTAL, MIDDLESEX COUNTY	595,893	671,780	750,162	75,887	12.7%	78,382	11.7%

Source: US Bureau of the Census: 1980, 1990 and 2000 Censuses of Population and Housing

**Table 2: Resident Population of Municipalities by County: 1980, 1990 and 2000
Monmouth County & Municipalities**

MONMOUTH County Municipalities	Total Population			Population Change			
	Census	Census	Census	1980-1990		1990-2000	
	1980	1990	2000	Number	Percent	Number	Percent
Aberdeen township	17,235	17,038	17,454	-197	-1.1%	416	2.4%
Allenhurst borough	912	759	718	-153	-16.8%	-41	-5.4%
Allentown borough	1,962	1,828	1,882	-134	-6.8%	54	3.0%
Asbury Park city	17,015	16,799	16,930	-216	-1.3%	131	0.8%
Atlantic Highlands borough	4,950	4,629	4,705	-321	-6.5%	76	1.6%
Avon-by-the-Sea borough	2,337	2,165	2,244	-172	-7.4%	79	3.6%
Belmar borough	6,771	5,877	6,045	-894	-13.2%	168	2.9%
Bradley Beach borough	4,772	4,475	4,793	-297	-6.2%	318	7.1%
Brielle borough	4,068	4,406	4,893	338	8.3%	487	11.1%
Colts Neck township	7,888	8,559	12,331	671	8.5%	3,772	44.1%
Deal borough	1,952	1,179	1,070	-773	-39.6%	-109	-9.2%
Eatontown borough	12,703	13,800	14,008	1,097	8.6%	208	1.5%
Englishtown borough	976	1,268	1,764	292	29.9%	496	39.1%
Fair Haven borough	5,679	5,270	5,937	-409	-7.2%	667	12.7%
Farmingdale borough	1,348	1,462	1,587	114	8.5%	125	8.5%
Freehold borough	10,020	10,742	10,976	722	7.2%	234	2.2%
Freehold township	19,202	24,710	31,537	5,508	28.7%	6,827	27.6%
Hazlet township	23,013	21,976	21,378	-1,037	-4.5%	-598	-2.7%
Highlands borough	5,187	4,849	5,097	-338	-6.5%	248	5.1%
Holmdel township	8,447	11,532	15,781	3,085	36.5%	4,249	36.8%
Howell township	25,065	38,987	48,903	13,922	55.5%	9,916	25.4%
Interlaken borough	1,037	910	900	-127	-12.2%	-10	-1.1%
Keansburg borough	10,613	11,069	10,732	456	4.3%	-337	-3.0%
Keyport borough	7,413	7,586	7,568	173	2.3%	-18	-0.2%
Little Silver borough	5,548	5,721	6,170	173	3.1%	449	7.8%
Loch Arbour village	369	380	280	11	3.0%	-100	-26.3%
Long Branch city	29,819	28,658	31,340	-1,161	-3.9%	2,682	9.4%
Manalapan township	18,914	26,716	33,423	7,802	41.2%	6,707	25.1%
Manasquan borough	5,354	5,369	6,310	15	0.3%	941	17.5%
Marlboro township	17,560	27,974	36,398	10,414	59.3%	8,424	30.1%

(continued)

**Table 2: Resident Population of Municipalities by County: 1980, 1990 and 2000
Monmouth County & Municipalities**

MONMOUTH County Municipalities	Total Population			Population Change			
	Census	Census	Census	1980-1990		1990-2000	
	1980	1990	2000	Number	Percent	Number	Percent
Matawan borough	8,837	9,270	8,910	433	4.9%	-360	-3.9%
Middletown township	62,574	68,183	66,327	5,609	9.0%	-1,856	-2.7%
Millstone township	3,926	5,069	8,970	1,143	29.1%	3,901	77.0%
Monmouth Beach borough	3,318	3,303	3,595	-15	-0.5%	292	8.8%
Neptune township	28,366	28,148	27,690	-218	-0.8%	-458	-1.6%
Neptune City borough	5,276	4,997	5,218	-279	-5.3%	221	4.4%
Ocean township	23,570	25,058	26,959	1,488	6.3%	1,901	7.6%
Oceanport borough	5,888	6,146	5,807	258	4.4%	-339	-5.5%
Red Bank borough	12,031	10,636	11,844	-1,395	-11.6%	1,208	11.4%
Roosevelt borough	835	884	933	49	5.9%	49	5.5%
Rumson borough	7,623	6,701	7,137	-922	-12.1%	436	6.5%
Sea Bright borough	1,812	1,693	1,818	-119	-6.6%	125	7.4%
Sea Girt borough	2,650	2,099	2,148	-551	-20.8%	49	2.3%
Shrewsbury borough	2,962	3,096	3,590	134	4.5%	494	16.0%
Shrewsbury township	995	1,098	1,098	103	10.4%	0	0.0%
South Belmar borough	1,566	1,482	1,806	-84	-5.4%	324	21.9%
Spring Lake borough	4,215	3,499	3,567	-716	-17.0%	68	1.9%
Spring Lake Heights borough	5,424	5,341	5,227	-83	-1.5%	-114	-2.1%
Tinton Falls borough	7,740	12,361	15,053	4,621	59.7%	2,692	21.8%
Union Beach borough	6,354	6,156	6,649	-198	-3.1%	493	8.0%
Upper Freehold township	2,750	3,277	4,282	527	19.2%	1,005	30.7%
Wall township	18,952	20,244	25,261	1,292	6.8%	5,017	24.8%
West Long Branch borough	7,380	7,690	8,258	310	4.2%	568	7.4%
TOTAL, MONMOUTH COUNTY	503,173	553,124	615,301	49,951	9.9%	62,177	11.2%

Source: US Bureau of the Census: 1980, 1990 and 2000 Censuses of Population and Housing

**Table 2: Resident Population of Municipalities by County: 1980, 1990 and 2000
Morris County & Municipalities**

MORRIS County Municipalities	Total Population			Population Change			
	Census	Census	Census	1980-1990		1990-2000	
	1980	1990	2000	Number	Percent	Number	Percent
Boonton town	8,620	8,343	8,496	-277	-3.2%	153	1.8%
Boonton township	3,273	3,566	4,287	293	9.0%	721	20.2%
Butler borough	7,616	7,392	7,420	-224	-2.9%	28	0.4%
Chatham borough	8,537	8,007	8,460	-530	-6.2%	453	5.7%
Chatham township	8,883	9,361	10,086	478	5.4%	725	7.7%
Chester borough	1,433	1,214	1,635	-219	-15.3%	421	34.7%
Chester township	5,198	5,958	7,282	760	14.6%	1,324	22.2%
Denville township	14,380	13,812	15,824	-568	-3.9%	2,012	14.6%
Dover town	14,681	15,115	18,188	434	3.0%	3,073	20.3%
East Hanover township	9,319	9,926	11,393	607	6.5%	1,467	14.8%
Florham Park borough	9,359	8,521	8,857	-838	-9.0%	336	3.9%
Hanover township	11,846	11,538	12,898	-308	-2.6%	1,360	11.8%
Harding township	3,236	3,640	3,180	404	12.5%	-460	-12.6%
Jefferson township	16,413	17,825	19,717	1,412	8.6%	1,892	10.6%
Kinnelon borough	7,770	8,470	9,365	700	9.0%	895	10.6%
Lincoln Park borough	8,806	10,978	10,930	2,172	24.7%	-48	-0.4%
Long Hill township*	7,275	7,826	8,777	551	7.6%	951	12.2%
Madison borough	15,357	15,850	16,530	493	3.2%	680	4.3%
Mendham borough	4,899	4,890	5,097	-9	-0.2%	207	4.2%
Mendham township	4,488	4,537	5,400	49	1.1%	863	19.0%
Mine Hill township	3,325	3,333	3,679	8	0.2%	346	10.4%
Montville township	14,290	15,600	20,839	1,310	9.2%	5,239	33.6%
Morris township	18,486	19,952	21,796	1,466	7.9%	1,844	9.2%
Morris Plains borough	5,305	5,219	5,236	-86	-1.6%	17	0.3%
Morristown town	16,614	16,189	18,544	-425	-2.6%	2,355	14.5%
Mountain Lakes borough	4,153	3,847	4,256	-306	-7.4%	409	10.6%
Mount Arlington borough	4,251	3,630	4,663	-621	-14.6%	1,033	28.5%
Mount Olive township	18,748	21,282	24,193	2,534	13.5%	2,911	13.7%
Netcong borough	3,557	3,311	2,580	-246	-6.9%	-731	-22.1%
Parsippany-Troy Hills township	49,868	48,478	50,649	-1,390	-2.8%	2,171	4.5%
Pequannock township	13,776	12,844	13,888	-932	-6.8%	1,044	8.1%

(continued)

**Table 2: Resident Population of Municipalities by County: 1980, 1990 and 2000
Morris County & Municipalities**

MORRIS County Municipalities	Total Population			Population Change			
	Census	Census	Census	1980-1990		1990-2000	
	1980	1990	2000	Number	Percent	Number	Percent
Randolph township	17,828	19,974	24,847	2,146	12.0%	4,873	24.4%
Riverdale borough	2,530	2,370	2,498	-160	-6.3%	128	5.4%
Rockaway borough	6,852	6,243	6,473	-609	-8.9%	230	3.7%
Rockaway township	19,850	19,572	22,930	-278	-1.4%	3,358	17.2%
Roxbury township	18,878	20,429	23,883	1,551	8.2%	3,454	16.9%
Victory Gardens borough	1,043	1,314	1,546	271	26.0%	232	17.7%
Washington township	11,402	15,592	17,592	4,190	36.7%	2,000	12.8%
Wharton borough	5,485	5,405	6,298	-80	-1.5%	893	16.5%
TOTAL, MORRIS COUNTY	407,630	421,353	470,212	13,723	3.4%	48,859	11.6%

Notes: *Passaic township changed its name to Long Hill township in November 1992.

Source: US Bureau of the Census: 1980, 1990 and 2000 Censuses of Population and Housing

Table 2: Resident Population of Municipalities by County: 1980, 1990 and 2000
Ocean County & Municipalities

OCEAN County Municipalities	Total Population			Population Change			
	Census	Census	Census	1980-1990		1990-2000	
	1980	1990	2000	Number	Percent	Number	Percent
Barnegat township	8,702	12,235	15,270	3,533	40.6%	3,035	24.8%
Barnegat Light borough	619	675	764	56	9.0%	89	13.2%
Bay Head borough	1,340	1,226	1,238	-114	-8.5%	12	1.0%
Beach Haven borough	1,714	1,475	1,278	-239	-13.9%	-197	-13.4%
Beachwood borough	7,687	9,324	10,375	1,637	21.3%	1,051	11.3%
Berkeley township	23,151	37,319	39,991	14,168	61.2%	2,672	7.2%
Brick township	53,629	66,473	76,119	12,844	23.9%	9,646	14.5%
Dover township	64,455	76,371	89,706	11,916	18.5%	13,335	17.5%
Eagleswood township	1,009	1,476	1,441	467	46.3%	-35	-2.4%
Harvey Cedars borough	363	362	359	-1	-0.3%	-3	-0.8%
Island Heights borough	1,575	1,470	1,751	-105	-6.7%	281	19.1%
Jackson township	25,644	33,233	42,816	7,589	29.6%	9,583	28.8%
Lacey township	14,161	22,141	25,346	7,980	56.4%	3,205	14.5%
Lakehurst borough	2,908	3,078	2,522	170	5.8%	-556	-18.1%
Lakewood township	38,464	45,048	60,352	6,584	17.1%	15,304	34.0%
Lavallette borough	2,072	2,299	2,665	227	11.0%	366	15.9%
Little Egg Harbor township	8,483	13,333	15,945	4,850	57.2%	2,612	19.6%
Long Beach township	3,488	3,407	3,329	-81	-2.3%	-78	-2.3%
Manchester township	27,987	35,976	38,928	7,989	28.5%	2,952	8.2%
Mantoloking borough	433	334	423	-99	-22.9%	89	26.6%
Ocean township	3,731	5,416	6,450	1,685	45.2%	1,034	19.1%
Ocean Gate borough	1,385	2,078	2,076	693	50.0%	-2	-0.1%
Pine Beach borough	1,796	1,954	1,950	158	8.8%	-4	-0.2%
Plumsted township	4,674	6,005	7,275	1,331	28.5%	1,270	21.1%
Point Pleasant borough	17,747	18,177	19,306	430	2.4%	1,129	6.2%
Point Pleasant Beach borough	5,415	5,112	5,314	-303	-5.6%	202	4.0%
Seaside Heights borough	1,802	2,366	3,155	564	31.3%	789	33.3%
Seaside Park borough	1,795	1,871	2,263	76	4.2%	392	21.0%
Ship Bottom borough	1,427	1,352	1,384	-75	-5.3%	32	2.4%
South Toms River borough	3,954	3,869	3,634	-85	-2.1%	-235	-6.1%

(continued)

Table 2: Resident Population of Municipalities by County, 1980, 1990 and 2000
Ocean County & Municipalities

OCEAN County Municipalities	Total Population			Population Change			
	Census	Census	Census	1980-1990		1990-2000	
	1980	1990	2000	Number	Percent	Number	Percent
Stafford township	10,385	13,325	22,532	2,940	28.3%	9,207	69.1%
Surf City borough	1,571	1,375	1,442	-196	-12.5%	67	4.9%
Tuckerton borough	2,472	3,048	3,517	576	23.3%	469	15.4%
TOTAL, OCEAN COUNTY	346,038	433,203	510,916	87,165	25.2%	77,713	17.9%

Source: US Bureau of the Census: 1980, 1990 and 2000 Censuses of Population and Housing

Table 2: Resident Population of Municipalities by County, 1980, 1990 and 2000
Passaic County & Municipalities

PASSAIC County Municipalities	Total Population			Population Change			
	Census	Census	Census	1980-1990		1990-2000	
	1980	1990	2000	Number	Percent	Number	Percent
Bloomingtondale borough	7,867	7,530	7,610	-337	-4.3%	80	1.1%
Clifton city	74,388	71,742	78,672	-2,646	-3.6%	6,930	9.7%
Haledon borough	6,607	6,951	8,252	344	5.2%	1,301	18.7%
Hawthorne borough	18,200	17,084	18,218	-1,116	-6.1%	1,134	6.6%
Little Falls township	11,496	11,294	10,855	-202	-1.8%	-439	-3.9%
North Haledon borough	8,177	7,987	7,920	-190	-2.3%	-67	-0.8%
Passaic city	52,463	58,041	67,861	5,578	10.6%	9,820	16.9%
Paterson city	137,970	140,891	149,222	2,921	2.1%	8,331	5.9%
Pompton Lakes borough	10,660	10,539	10,640	-121	-1.1%	101	1.0%
Prospect Park borough	5,142	5,053	5,779	-89	-1.7%	726	14.4%
Ringwood borough	12,625	12,623	12,396	-2	0.0%	-227	-1.8%
Totowa borough	11,448	10,177	9,892	-1,271	-11.1%	-285	-2.8%
Wanaque borough	10,025	9,711	10,266	-314	-3.1%	555	5.7%
Wayne township	46,474	47,025	54,069	551	1.2%	7,044	15.0%
West Milford township	22,750	25,430	26,410	2,680	11.8%	980	3.9%
West Paterson borough	11,293	10,982	10,987	-311	-2.8%	5	0.0%
TOTAL, PASSAIC COUNTY	447,585	453,060	489,049	5,475	1.2%	35,989	7.9%

Source: US Bureau of the Census: 1980, 1990 and 2000 Censuses of Population and Housing

Table 2: Resident Population of Municipalities by County, 1980, 1990 and 2000
Salem County & Municipalities

SALEM County Municipalities	Total Population			Population Change			
	Census	Census	Census	1980-1990		1990-2000	
	1980	1990	2000	Number	Percent	Number	Percent
Alloway township	2,680	2,795	2,774	115	4.3%	-21	-0.8%
Carneys Point township	8,396	8,443	7,684	47	0.6%	-759	-9.0%
Elmer borough	1,569	1,571	1,384	2	0.1%	-187	-11.9%
Elsinboro township	1,290	1,170	1,092	-120	-9.3%	-78	-6.7%
Lower Alloways Creek township	1,547	1,858	1,851	311	20.1%	-7	-0.4%
Mannington township	1,740	1,693	1,559	-47	-2.7%	-134	-7.9%
Oldmans township	1,847	1,683	1,798	-164	-8.9%	115	6.8%
Penns Grove borough	5,760	5,228	4,886	-532	-9.2%	-342	-6.5%
Pennsville township	13,848	13,794	13,194	-54	-0.4%	-600	-4.3%
Pilesgrove township	2,810	3,250	3,923	440	15.7%	673	20.7%
Pittsgrove township	6,954	8,121	8,893	1,167	16.8%	772	9.5%
Quinton township	2,887	2,511	2,786	-376	-13.0%	275	11.0%
Salem city	6,959	6,883	5,857	-76	-1.1%	-1,026	-14.9%
Upper Pittsgrove township	3,139	3,140	3,468	1	0.0%	328	10.4%
Woodstown borough	3,250	3,154	3,136	-96	-3.0%	-18	-0.6%
TOTAL, SALEM COUNTY	64,676	65,294	64,285	618	1.0%	-1,009	-1.5%

Source: US Bureau of the Census: 1980, 1990 and 2000 Censuses of Population and Housing

**Table 2: Resident Population of Municipalities by County, 1980, 1990 and 2000
Somerset County & Municipalities**

SOMERSET County Municipalities	Total Population			Population Change			
	Census	Census	Census	1980-1990		1990-2000	
	1980	1990	2000	Number	Percent	Number	Percent
Bedminster township	2,469	7,086	8,302	4,617	187.0%	1,216	17.2%
Bernards township	12,920	17,199	24,575	4,279	33.1%	7,376	42.9%
Bernardsville borough	6,715	6,597	7,345	-118	-1.8%	748	11.3%
Bound Brook borough	9,710	9,487	10,155	-223	-2.3%	668	7.0%
Branchburg township	7,846	10,888	14,566	3,042	38.8%	3,678	33.8%
Bridgewater township	29,175	32,509	42,940	3,334	11.4%	10,431	32.1%
Far Hills borough	677	657	859	-20	-3.0%	202	30.7%
Franklin township	31,358	42,780	50,903	11,422	36.4%	8,123	19.0%
Green Brook township	4,640	4,460	5,654	-180	-3.9%	1,194	26.8%
Hillsborough township	19,061	28,808	36,634	9,747	51.1%	7,826	27.2%
Manville borough	11,278	10,567	10,343	-711	-6.3%	-224	-2.1%
Millstone borough	530	450	410	-80	-15.1%	-40	-8.9%
Montgomery township	7,360	9,612	17,481	2,252	30.6%	7,869	81.9%
North Plainfield borough	19,108	18,820	21,103	-288	-1.5%	2,283	12.1%
Peapack and Gladstone borough	2,038	2,111	2,433	73	3.6%	322	15.3%
Raritan borough	6,128	5,798	6,338	-330	-5.4%	540	9.3%
Rocky Hill borough	717	693	662	-24	-3.3%	-31	-4.5%
Somerville borough	11,973	11,632	12,423	-341	-2.8%	791	6.8%
South Bound Brook borough	4,331	4,185	4,492	-146	-3.4%	307	7.3%
Warren township	9,805	10,830	14,259	1,025	10.5%	3,429	31.7%
Watchung borough	5,290	5,110	5,613	-180	-3.4%	503	9.8%
TOTAL, SOMERSET COUNTY	203,129	240,279	297,490	37,150	18.3%	57,211	23.8%

Source: US Bureau of the Census: 1980, 1990 and 2000 Censuses of Population and Housing

Table 2: Resident Population of Municipalities by County, 1980, 1990 and 2000
Sussex County & Municipalities

SUSSEX County Municipalities	Total Population			Population Change			
	Census	Census	Census	1980-1990		1990-2000	
	1980	1990	2000	Number	Percent	Number	Percent
Andover borough	892	700	658	-192	-21.5%	-42	-6.0%
Andover township	4,506	5,438	6,033	932	20.7%	595	10.9%
Branchville borough	870	851	845	-19	-2.2%	-6	-0.7%
Byram township	7,502	8,048	8,254	546	7.3%	206	2.6%
Frankford township	4,654	5,114	5,420	460	9.9%	306	6.0%
Franklin borough	4,486	4,977	5,160	491	10.9%	183	3.7%
Fredon township	2,281	2,763	2,860	482	21.1%	97	3.5%
Green township	2,450	2,709	3,220	259	10.6%	511	18.9%
Hamburg borough	1,832	2,566	3,105	734	40.1%	539	21.0%
Hampton township	3,916	4,438	4,943	522	13.3%	505	11.4%
Hardyston township	4,553	5,275	6,171	722	15.9%	896	17.0%
Hopatcong borough	15,531	15,586	15,888	55	0.4%	302	1.9%
Lafayette township	1,614	1,902	2,300	288	17.8%	398	20.9%
Montague township	2,066	2,832	3,412	766	37.1%	580	20.5%
Newton town	7,748	7,521	8,244	-227	-2.9%	723	9.6%
Ogdensburg borough	2,737	2,722	2,638	-15	-0.5%	-84	-3.1%
Sandyston township	1,485	1,732	1,825	247	16.6%	93	5.4%
Sparta township	13,333	15,157	18,080	1,824	13.7%	2,923	19.3%
Stanhope borough	3,638	3,393	3,584	-245	-6.7%	191	5.6%
Stillwater township	3,887	4,253	4,267	366	9.4%	14	0.3%
Sussex borough	2,418	2,201	2,145	-217	-9.0%	-56	-2.5%
Vernon township	16,302	21,211	24,686	4,909	30.1%	3,475	16.4%
Walpack township	150	67	41	-83	-55.3%	-26	-38.8%
Wantage township	7,268	9,487	10,387	2,219	30.5%	900	9.5%
TOTAL, SUSSEX COUNTY	116,119	130,943	144,166	14,824	12.8%	13,223	10.1%

Source: US Bureau of the Census: 1980, 1990 and 2000 Censuses of Population and Housing

Table 2: Resident Population of Municipalities by County, 1980, 1990 and 2000
Union County & Municipalities

UNION County Municipalities	Total Population			Population Change			
	Census	Census	Census	1980-1990		1990-2000	
	1980	1990	2000	Number	Percent	Number	Percent
Berkeley Heights township	12,549	11,980	13,407	-569	-4.5%	1,427	11.9%
Clark township	16,699	14,629	14,597	-2,070	-12.4%	-32	-0.2%
Cranford township	24,573	22,633	22,578	-1,940	-7.9%	-55	-0.2%
Elizabeth city	106,201	110,002	120,568	3,801	3.6%	10,566	9.6%
Fanwood borough	7,767	7,115	7,174	-652	-8.4%	59	0.8%
Garwood borough	4,752	4,227	4,153	-525	-11.0%	-74	-1.8%
Hillside township	21,440	21,044	21,747	-396	-1.8%	703	3.3%
Kenilworth borough	8,221	7,574	7,675	-647	-7.9%	101	1.3%
Linden city	37,836	36,701	39,394	-1,135	-3.0%	2,693	7.3%
Mountainside borough	7,118	6,657	6,602	-461	-6.5%	-55	-0.8%
New Providence borough	12,426	11,439	11,907	-987	-7.9%	468	4.1%
Plainfield city	45,555	46,567	47,829	1,012	2.2%	1,262	2.7%
Rahway city	26,723	25,325	26,500	-1,398	-5.2%	1,175	4.6%
Roselle borough	20,641	20,314	21,274	-327	-1.6%	960	4.7%
Roselle Park borough	13,377	12,805	13,281	-572	-4.3%	476	3.7%
Scotch Plains township	20,774	21,160	22,732	386	1.9%	1,572	7.4%
Springfield township	13,955	13,420	14,429	-535	-3.8%	1,009	7.5%
Summit city	21,071	19,757	21,131	-1,314	-6.2%	1,374	7.0%
Union township	50,184	50,024	54,405	-160	-0.3%	4,381	8.8%
Westfield town	30,447	28,870	29,644	-1,577	-5.2%	774	2.7%
Winfield township	1,785	1,576	1,514	-209	-11.7%	-62	-3.9%
TOTAL, UNION COUNTY	504,094	493,819	522,541	-10,275	-2.0%	28,722	5.8%

Source: US Bureau of the Census: 1980, 1990 and 2000 Censuses of Population and Housing

**Table 2: Resident Population of Municipalities by County: 1980, 1990 and 2000
Warren County & Municipalities**

WARREN County Municipalities	Total Population			Population Change			
	Census	Census	Census	1980-1990		1990-2000	
	1980	1990	2000	Number	Percent	Number	Percent
Allamuchy township	2,560	3,484	3,877	924	36.1%	393	11.3%
Alpha borough	2,644	2,530	2,482	-114	-4.3%	-48	-1.9%
Belvidere town	2,475	2,669	2,771	194	7.8%	102	3.8%
Blairstown township	4,360	5,331	5,747	971	22.3%	416	7.8%
Franklin township	2,341	2,404	2,768	63	2.7%	364	15.1%
Frelinghuysen township	1,435	1,779	2,083	344	24.0%	304	17.1%
Greenwich township	1,738	1,899	4,365	161	9.3%	2,466	129.9%
Hackettstown town	8,850	8,120	10,403	-730	-8.2%	2,283	28.1%
Hardwick township**	947	1,235	1,464	288	30.4%	229	18.5%
Harmony township	2,592	2,653	2,729	61	2.4%	76	2.9%
Hope township	1,468	1,719	1,891	251	17.1%	172	10.0%
Independence township	2,829	3,940	5,603	1,111	39.3%	1,663	42.2%
Knowlton township	2,074	2,543	2,977	469	22.6%	434	17.1%
Liberty township	1,730	2,493	2,765	763	44.1%	272	10.9%
Lopatcong township	4,998	5,052	5,765	54	1.1%	713	14.1%
Mansfield township	5,780	7,154	6,653	1,374	23.8%	-501	-7.0%
Oxford township	1,659	1,790	2,307	131	7.9%	517	28.9%
Pahaquarry township	26	20	NA	-6	-23.1%	NA	NA
Phillipsburg town	16,647	15,757	15,166	-890	-5.3%	-591	-3.8%
Pohatcong township	3,856	3,591	3,416	-265	-6.9%	-175	-4.9%
Washington borough	6,429	6,474	6,712	45	0.7%	238	3.7%
Washington township	4,243	5,367	6,248	1,124	26.5%	881	16.4%
White township	2748	3,603	4,245	855	31.1%	642	17.8%
TOTAL, WARREN COUNTY	84,429	91,607	102,437	7,178	8.5%	10,830	11.8%

Notes: **Hardwick township annexed Pahaquarry township in July 1997.

NA = Not Available

Source: US Bureau of the Census: 1980, 1990 and 2000 Censuses of Population and Housing