

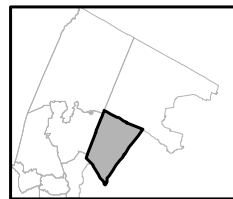
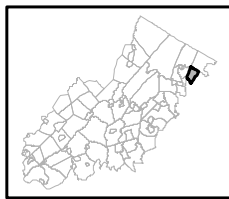
# Exhibit A: Borough Highlands Area



Regional Master Plan Overlay Zone Designation

- |  |                             |
|--|-----------------------------|
| Protection                                     | Lakes Greater Than 10 acres |
| Conservation                                   | Preservation Area           |
| Existing Community                             | Municipal Boundaries        |
| <b>Sub-Zone</b>                                |                             |
| Existing Community Environmentally Constrained |                             |
| Conservation Environmentally Constrained       |                             |
| Lake Community                                 |                             |
| Wildlife Management                            |                             |

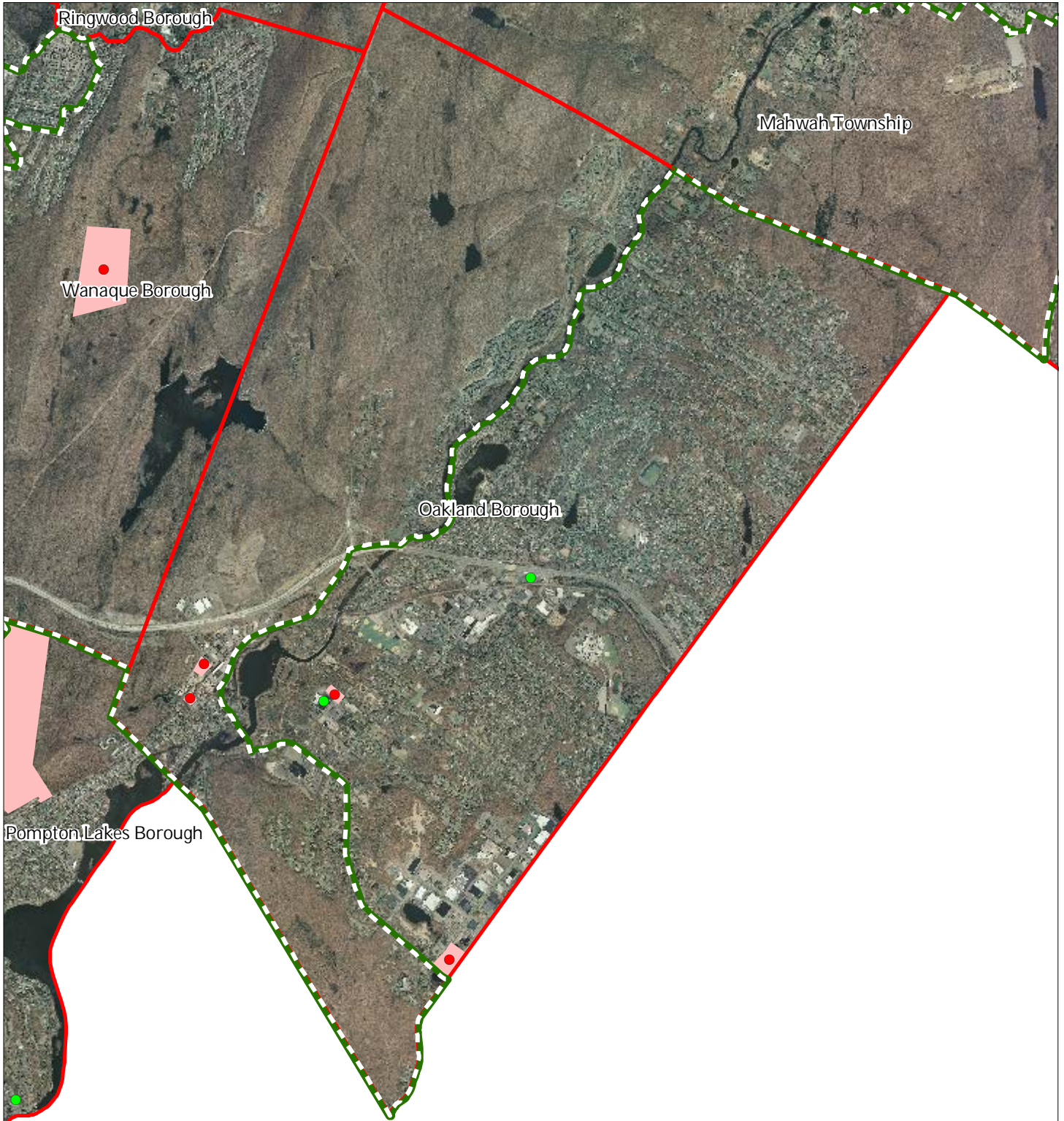
## Oakland Borough



1 inch = 0.583 miles



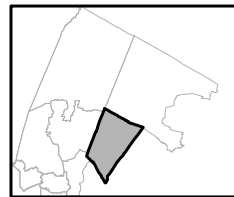
# Exhibit C: Highlands Contaminated Site Inventory



Highlands Contaminated Site Inventory

- Tier 1 Sites
- Tier 1 Sites (Polygons)
- Tier 2 Sites
- Preservation Area
- Municipal Boundaries

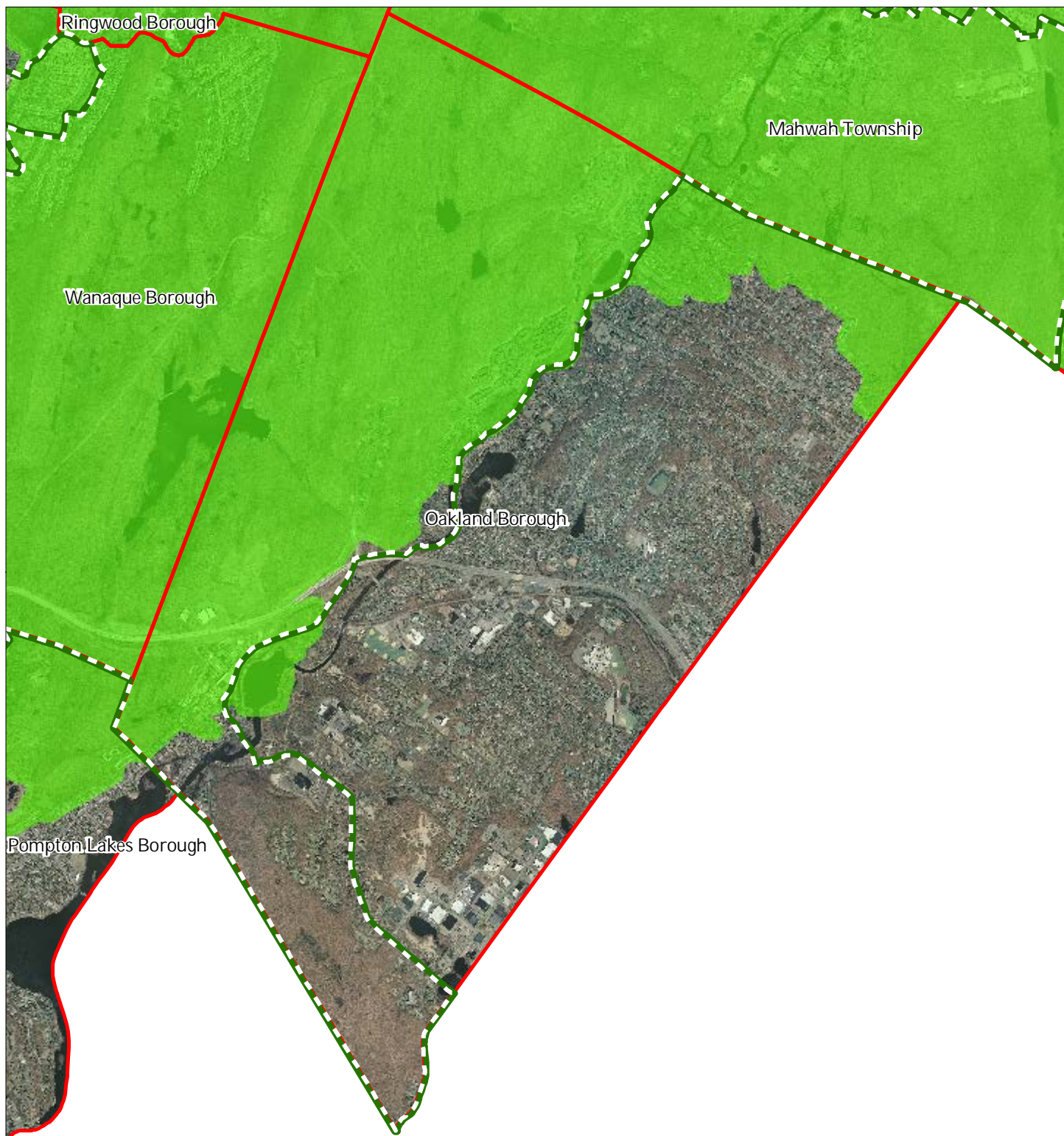
## Oakland Borough






1 inch = 0.583 miles

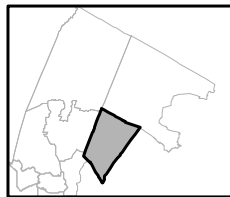
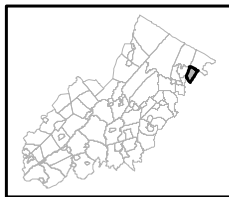


# Exhibit E: Forest Resource Area



-  Forest Resource Area
-  Preservation Area
-  Municipal Boundaries

## Oakland Borough






1 inch = 0.583 miles

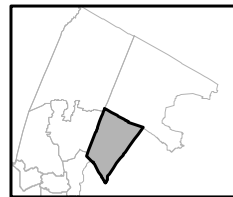


# Exhibit F: Total Forest Area



-  Forested Areas
-  Preservation Area
-  Municipal Boundaries

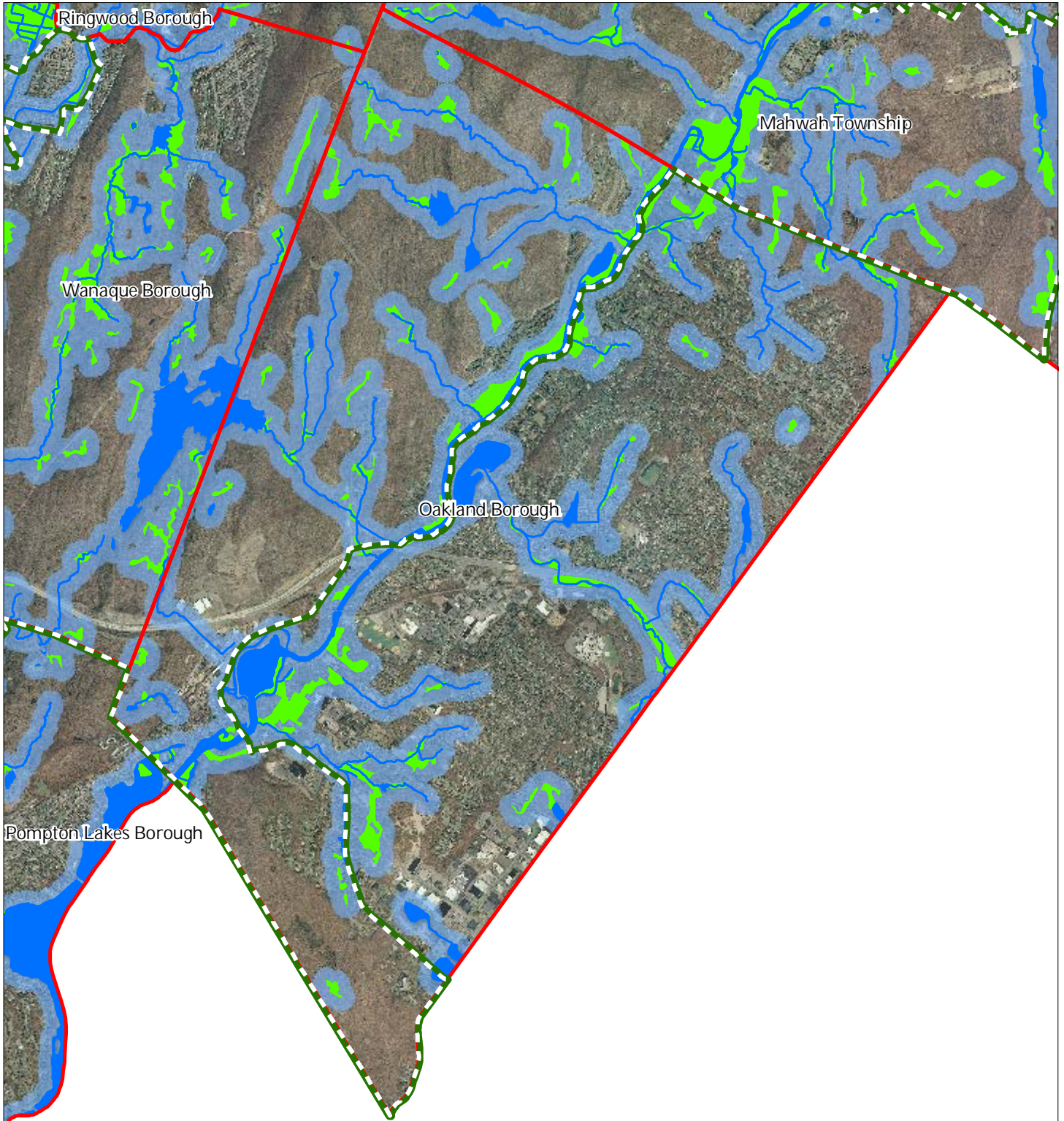
## Oakland Borough



1 inch = 0.583 miles

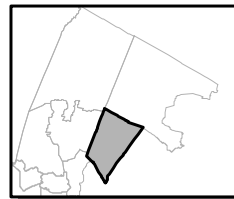
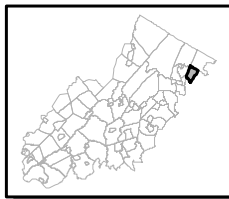


# Exhibit H: Highlands Open Waters



- Highlands Open Water Buffers (300ft)
- Streams
- Wetlands
- Lakes & Ponds
- Preservation Area
- Municipal Boundaries

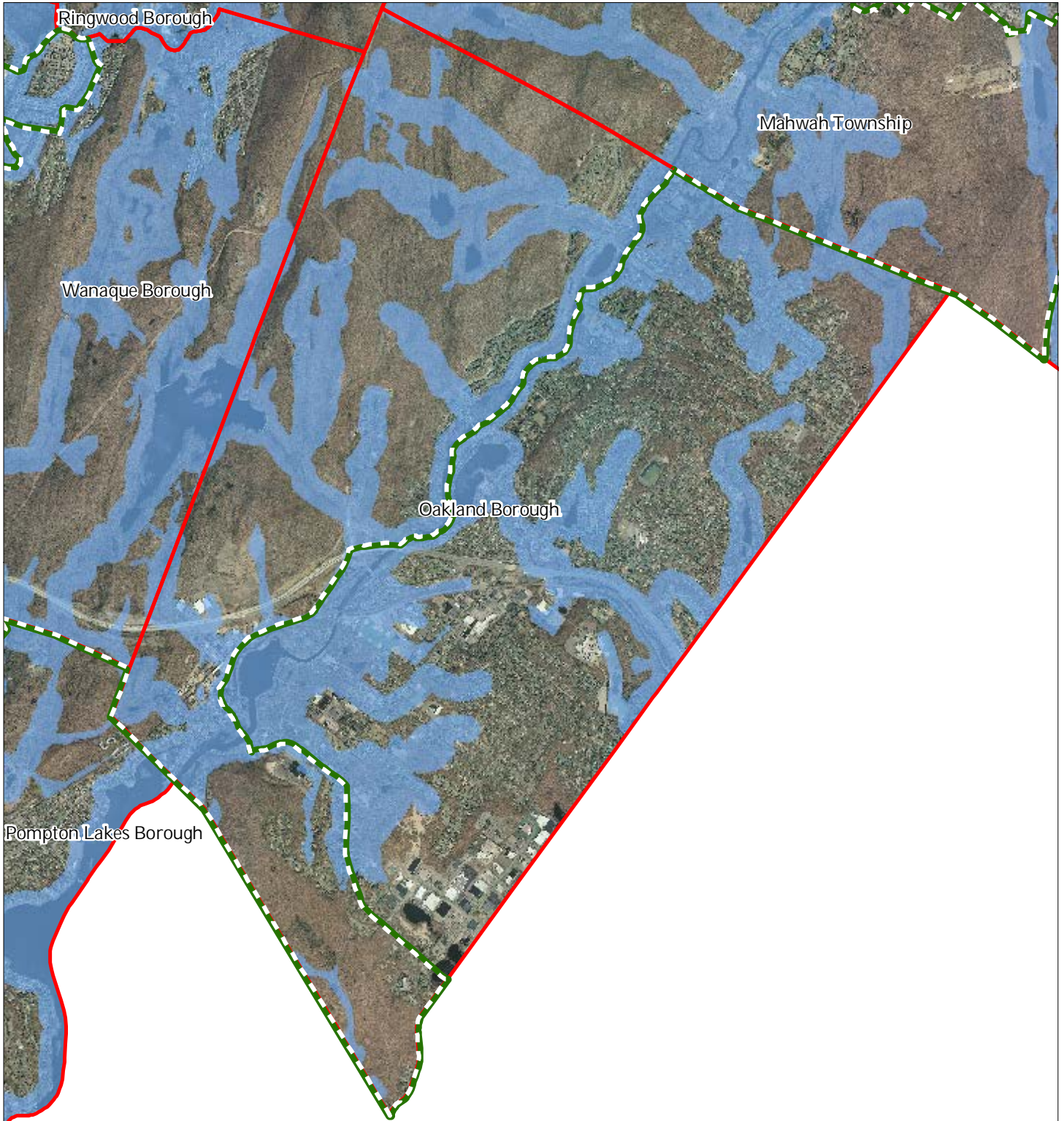
## Oakland Borough

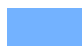




1 inch = 0.583 miles

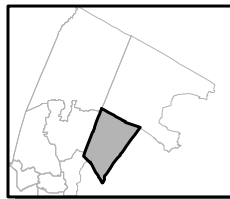
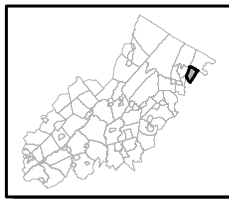


# Exhibit I: Highlands Riparian Areas



-  Riparian Area
-  Preservation Area
-  Municipal Boundaries

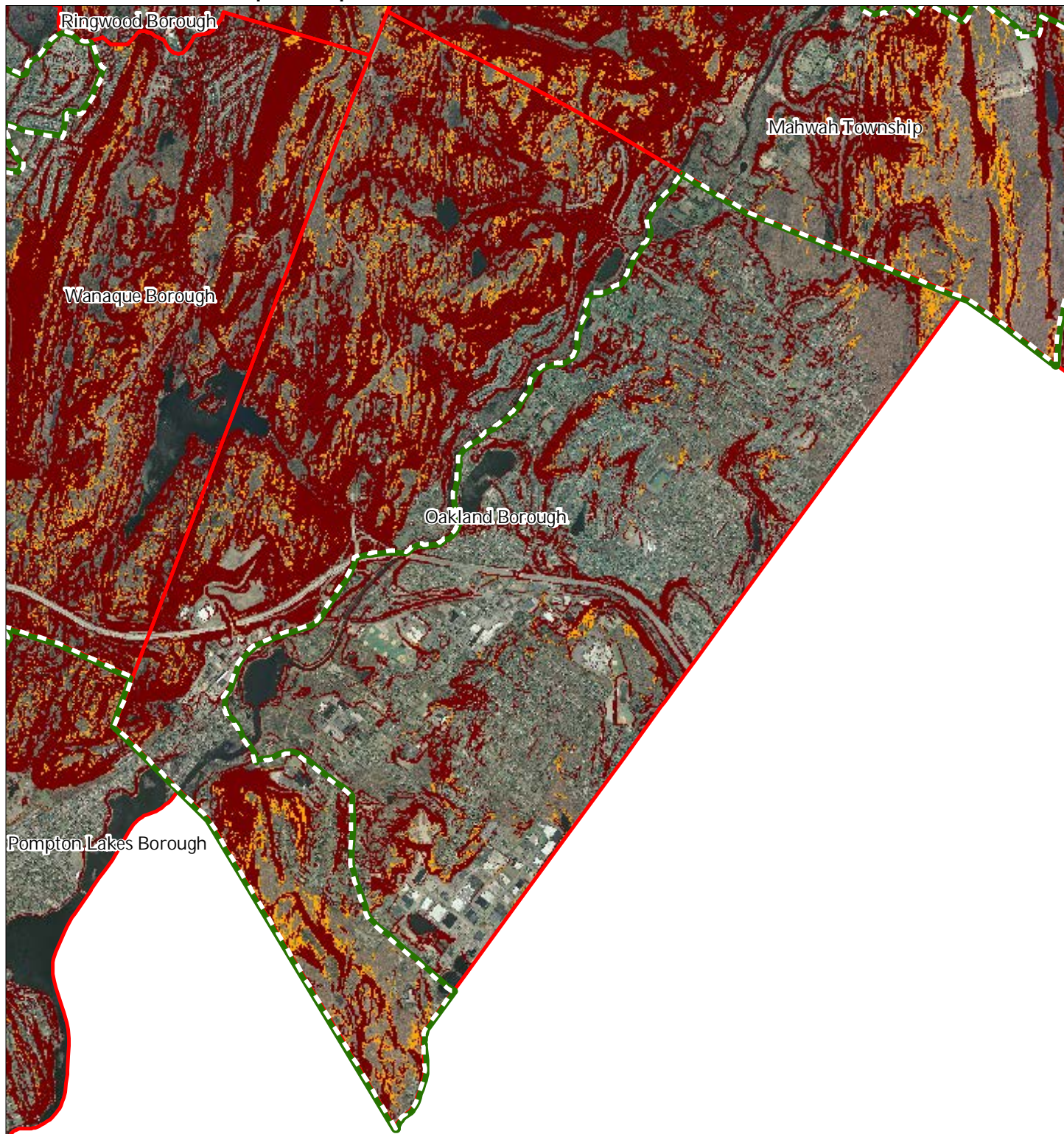
## Oakland Borough







1 inch = 0.583 miles



# Exhibit L: Steep Slope Protection Areas



### Steep Slopes

-  Moderate
-  Severe
-  Preservation Area
-  Municipal Boundaries

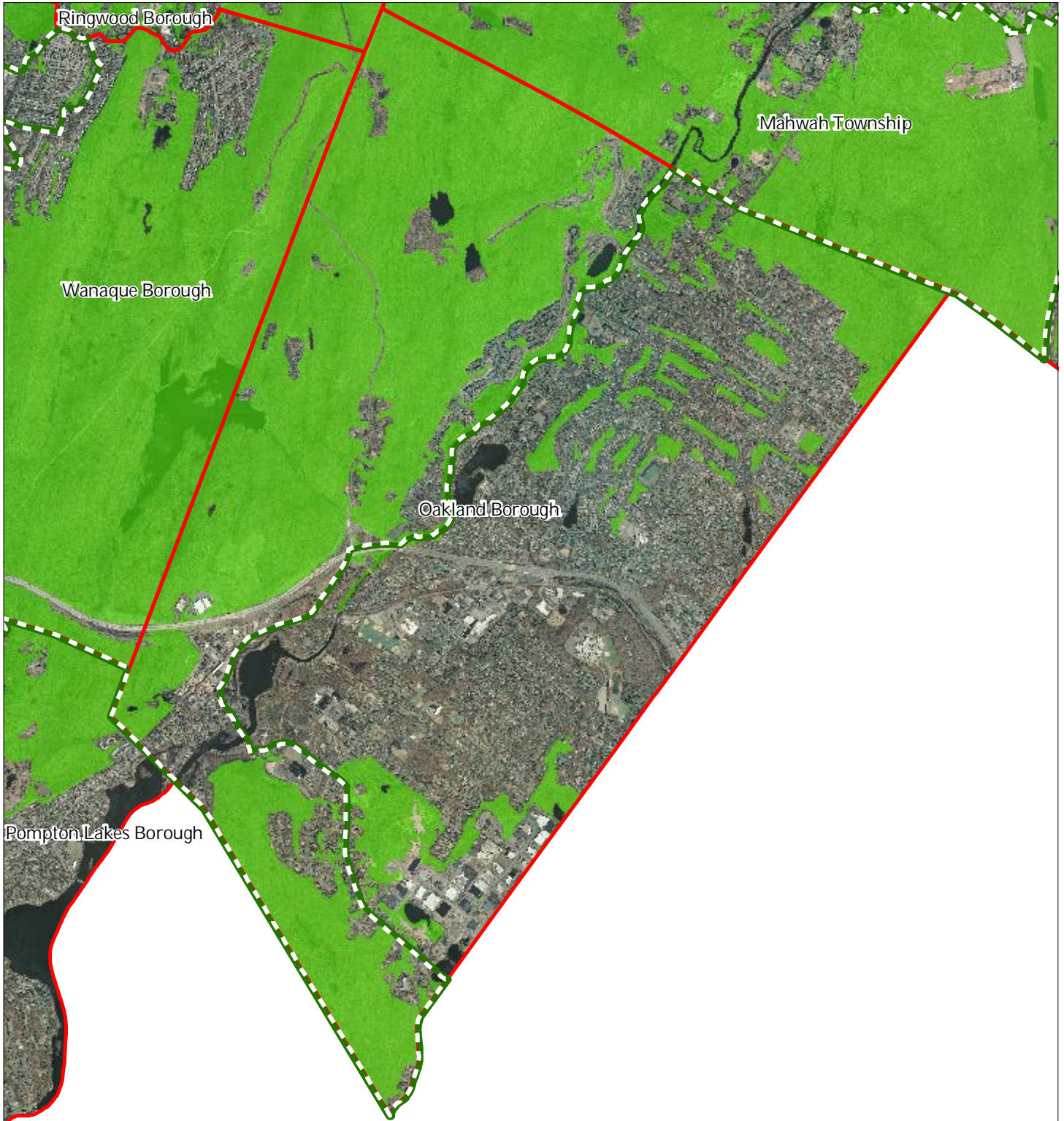
## Oakland Borough






1 inch = 0.583 miles

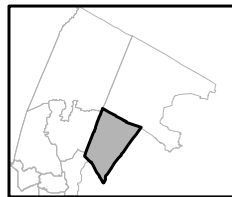
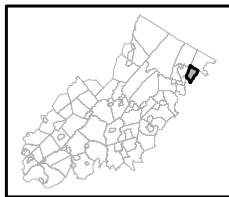


# Exhibit M: Critical Wildlife Habitat



-  Critical Wildlife Habitat
-  Preservation Area
-  Municipal Boundaries

## Oakland Borough

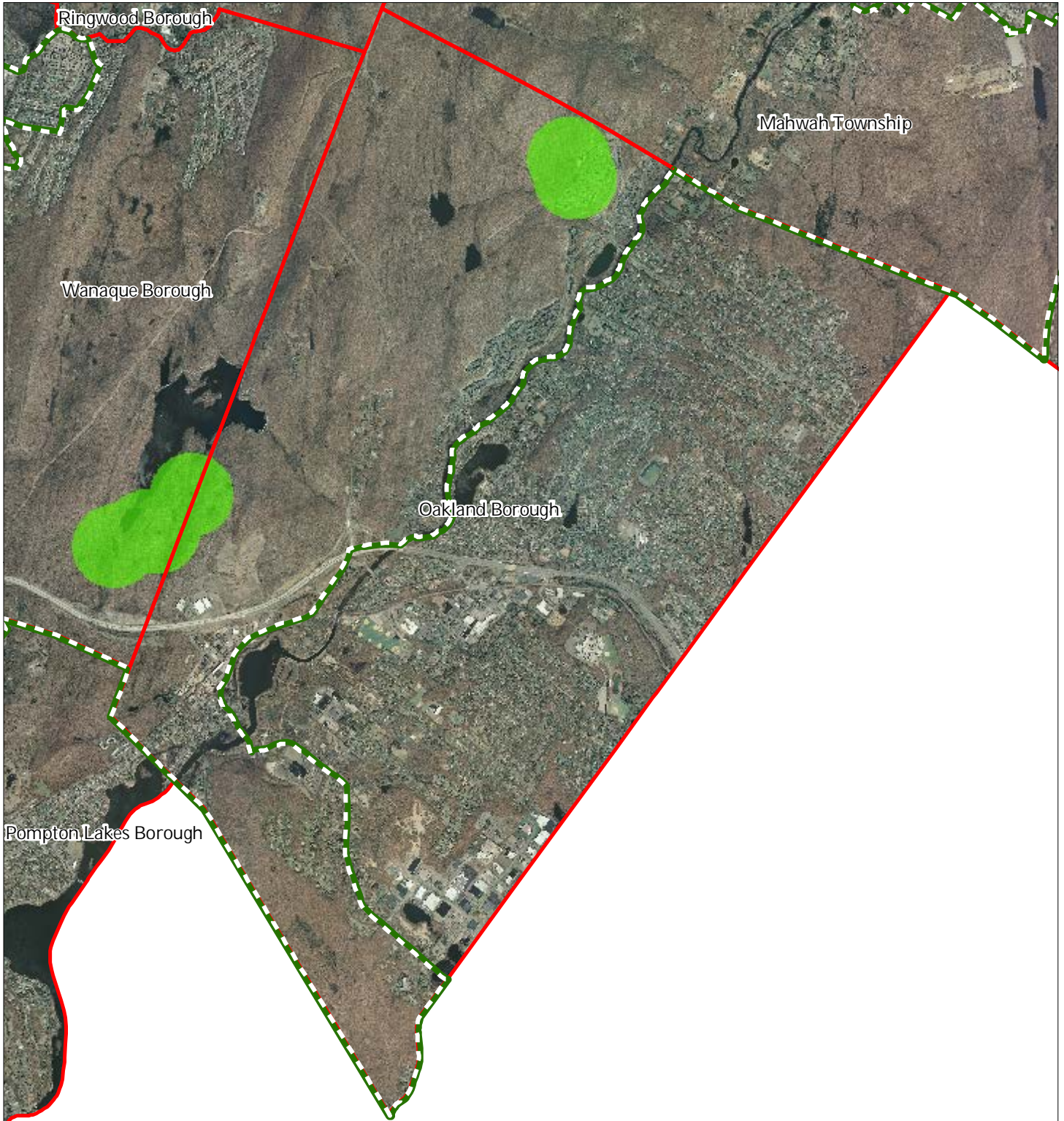





1 inch = 0.583 miles



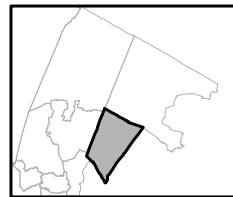
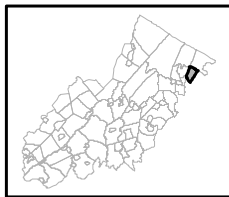


# Exhibit O: Vernal Pools, Vernal Pool Buffers



-  Vernal Pools + 1000ft Buffer
-  Preservation Area
-  Municipal Boundaries

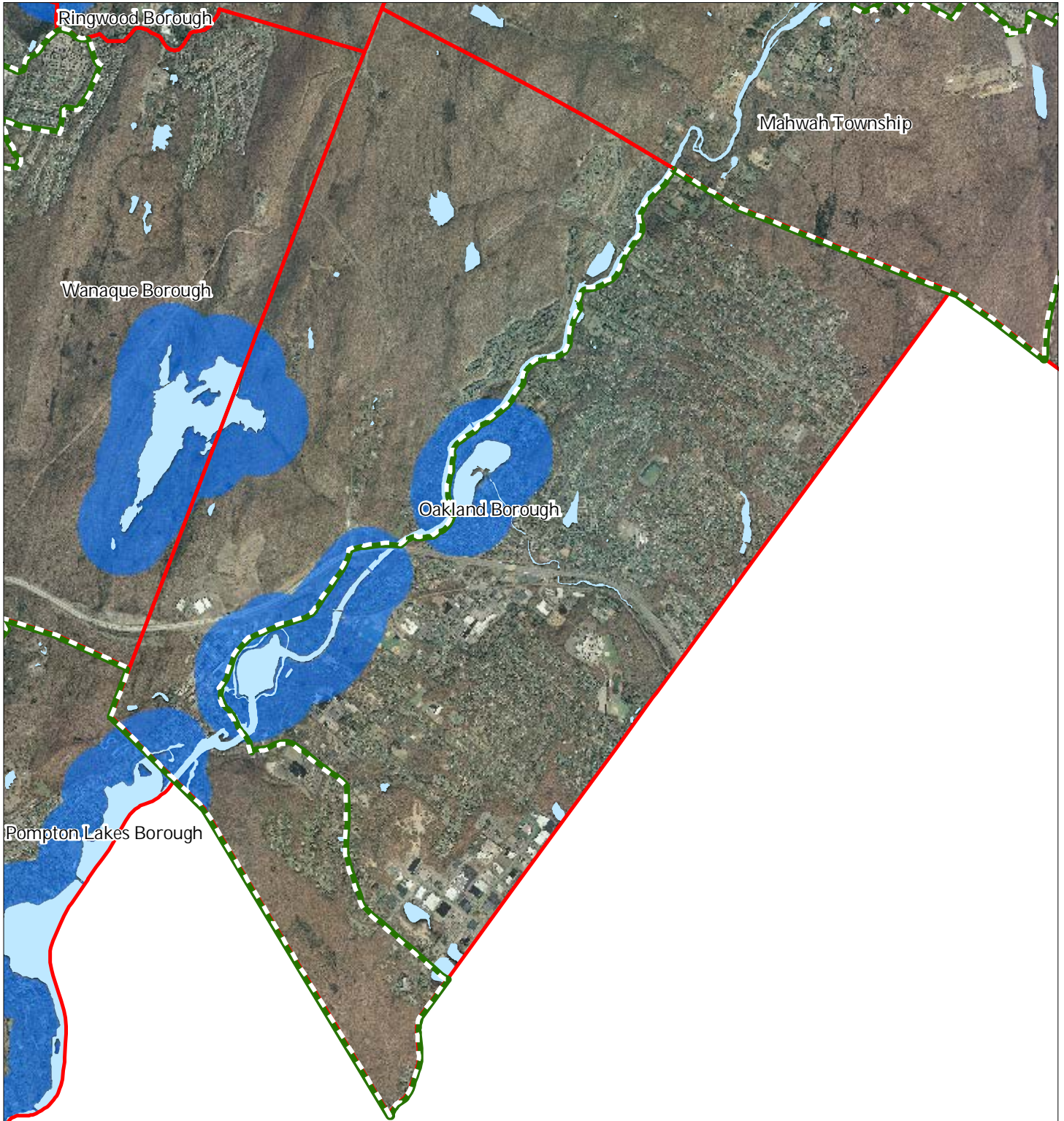
## Oakland Borough

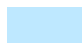





1 inch = 0.583 miles



# Exhibit Q: Lake Management Area



-  Lakes & Ponds
-  Lake Management Area
-  Preservation Area
-  Municipal Boundaries

## Oakland Borough

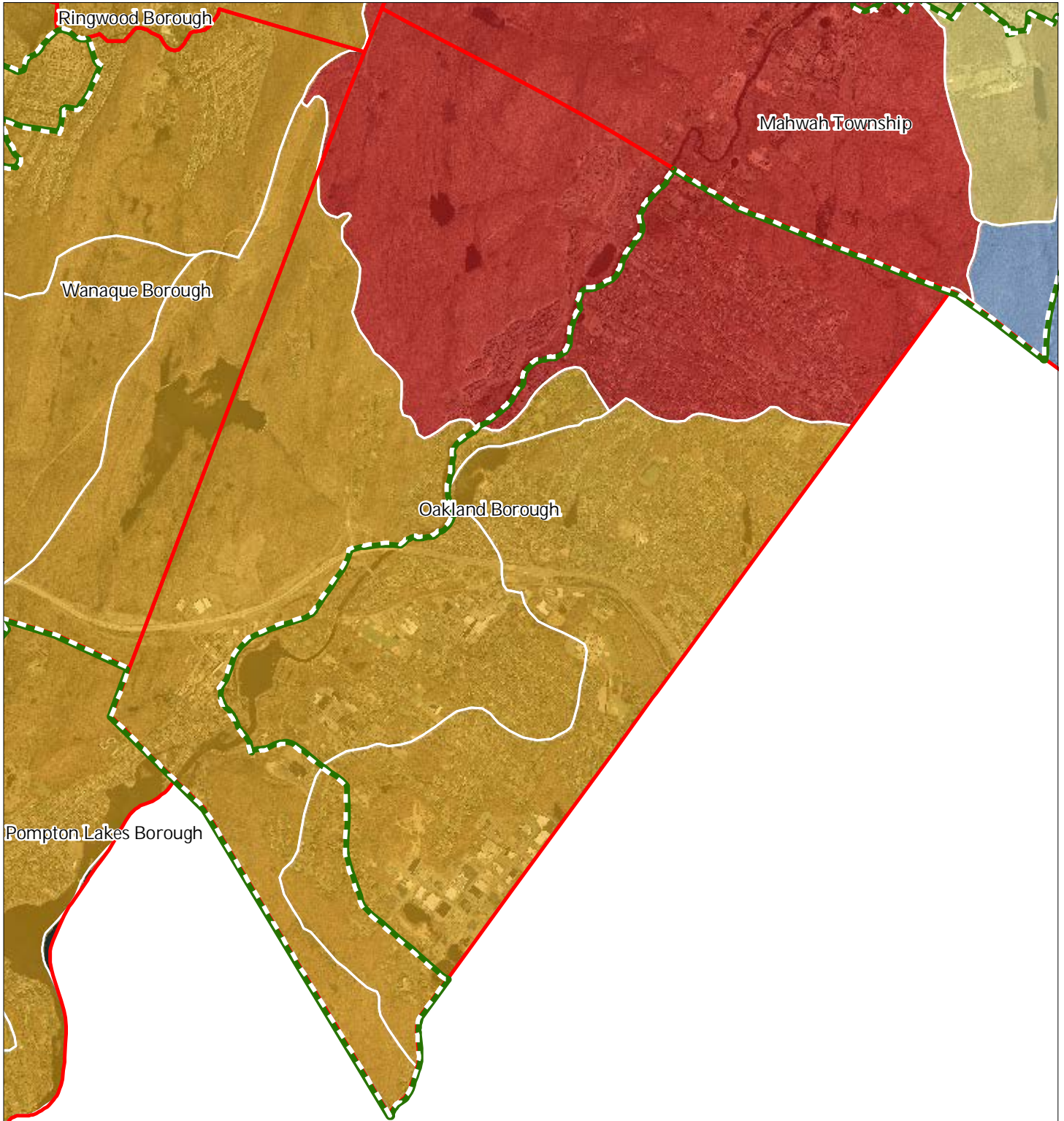


1 inch = 0.583 miles



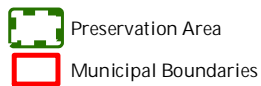
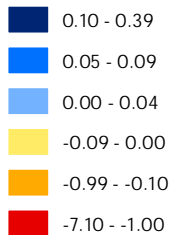
The logo for the Highlands Council of New Jersey, featuring a stylized blue mountain range above the text 'Highlands Council' and 'New Jersey'. A north arrow is located to the right of the logo.

# Exhibit R: Net Water Availability

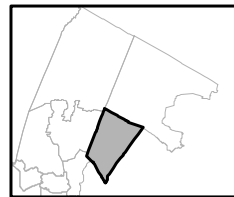
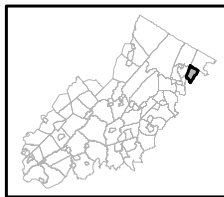


Net Water Availability By HUC14

Million Gallons Per Day (MGD)



## Oakland Borough

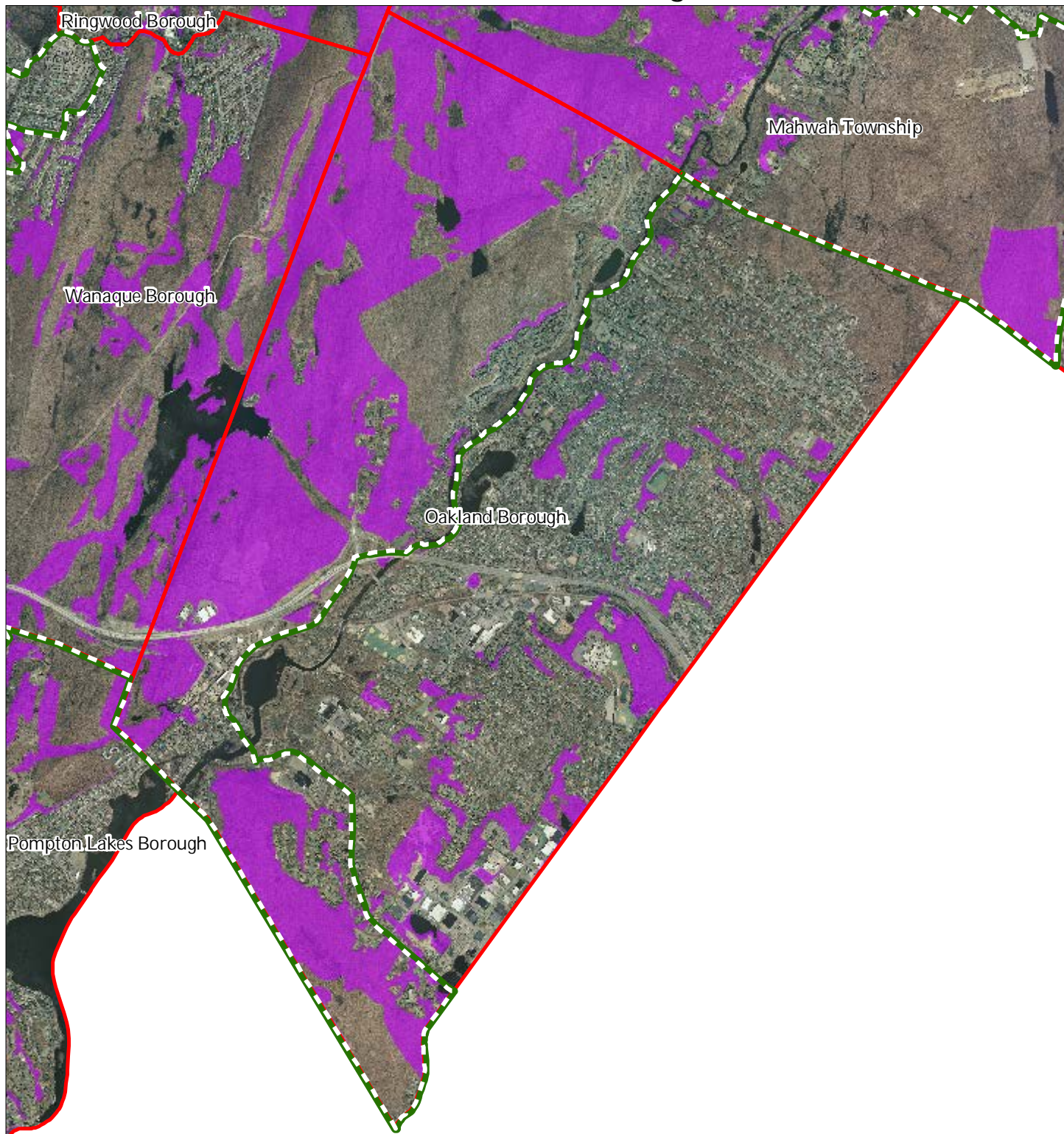





1 inch = 0.583 miles



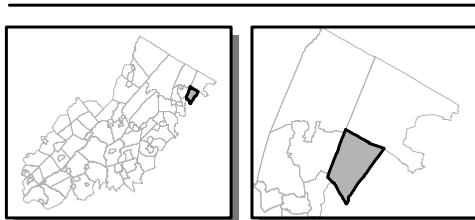
March 2014

# Exhibit S: Prime Ground Water Recharge Areas



-  Prime Ground Water Recharge Areas
-  Preservation Area
-  Municipal Boundaries

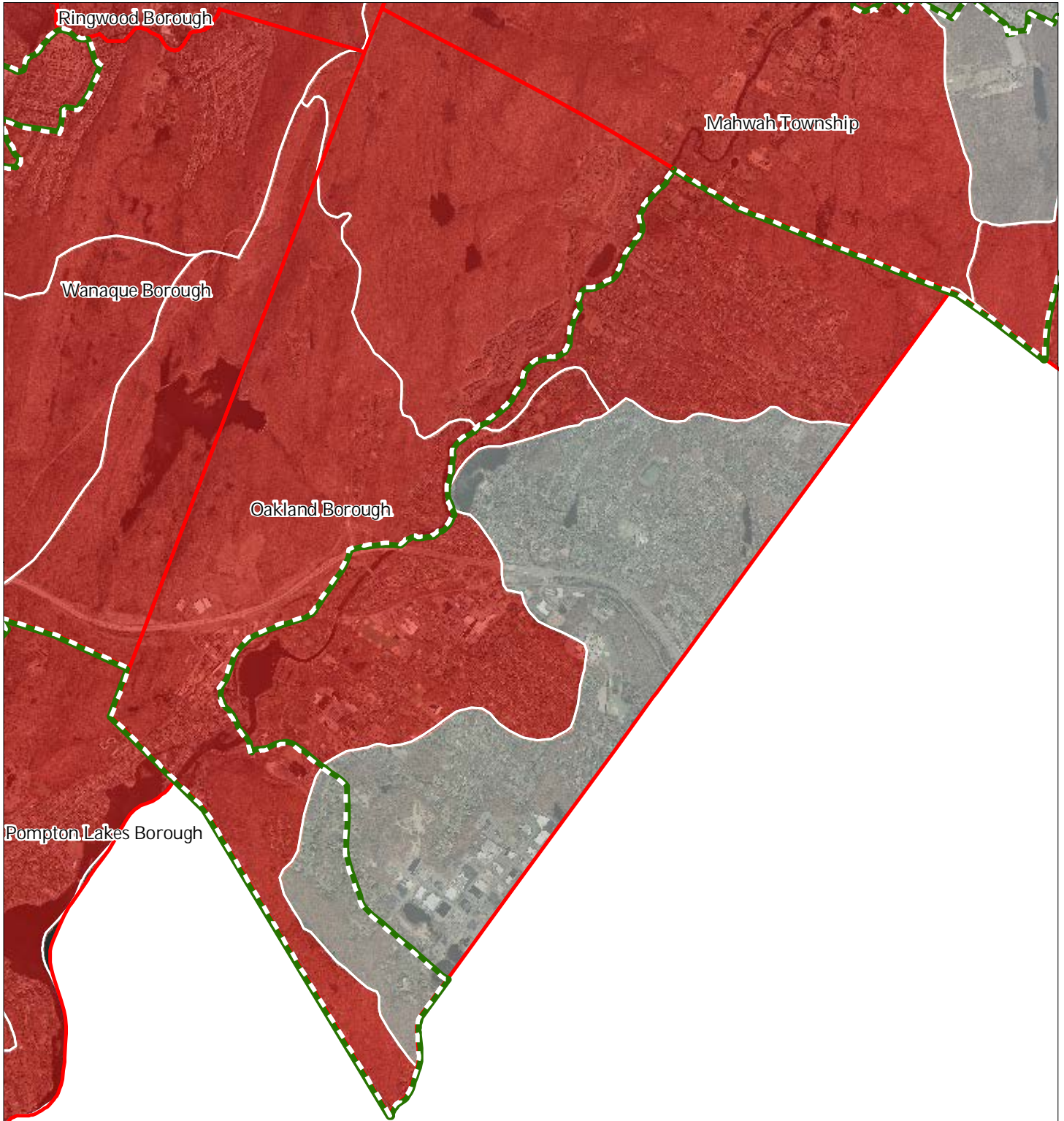
## Oakland Borough



1 inch = 0.583 miles



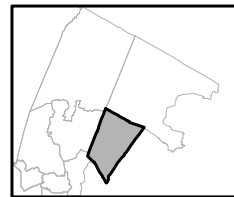
# Exhibit T: HUC 14s on NJDEP Impaired Waters List



Impaired Waters Overall Assessment by HUC14 Subwatershed

- Non Impacted
- Insufficient Data Available
- Moderate
- Water Quality Impaired
- Preservation Area
- Municipal Boundaries

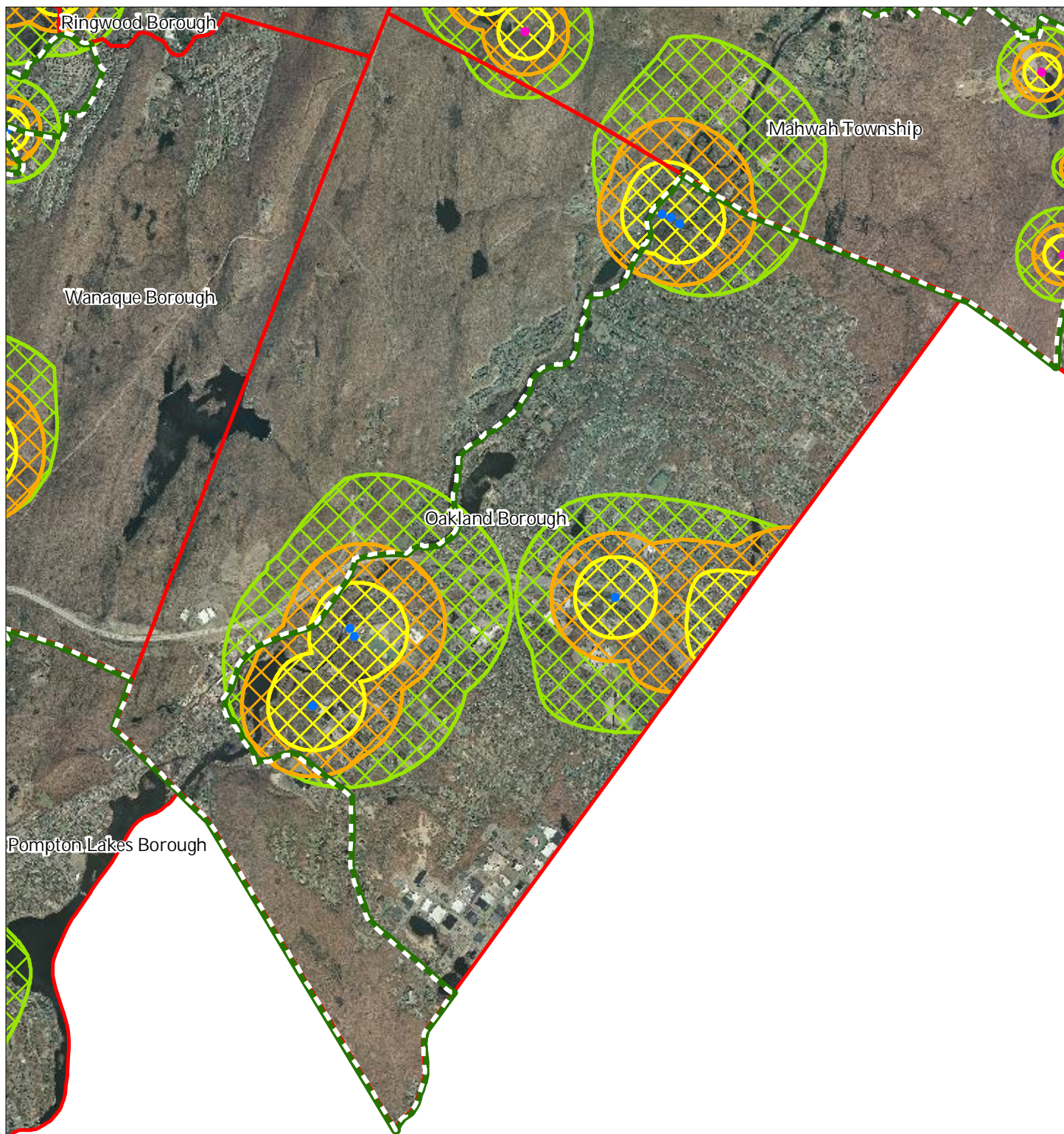
## Oakland Borough



1 inch = 0.583 miles



# Exhibit U: Wellhead Protection Areas



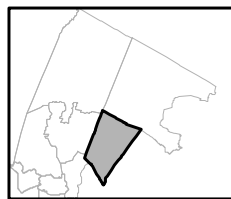
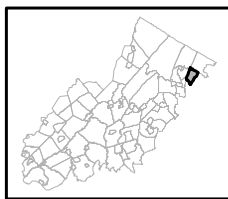
- Public Community Wells
- Public Non-Community Wells

### Wellhead Protection Areas

- 2-Year Tier
- 5-Year Tier
- 12-Year Tier

- Preservation Area
- Municipal Boundaries

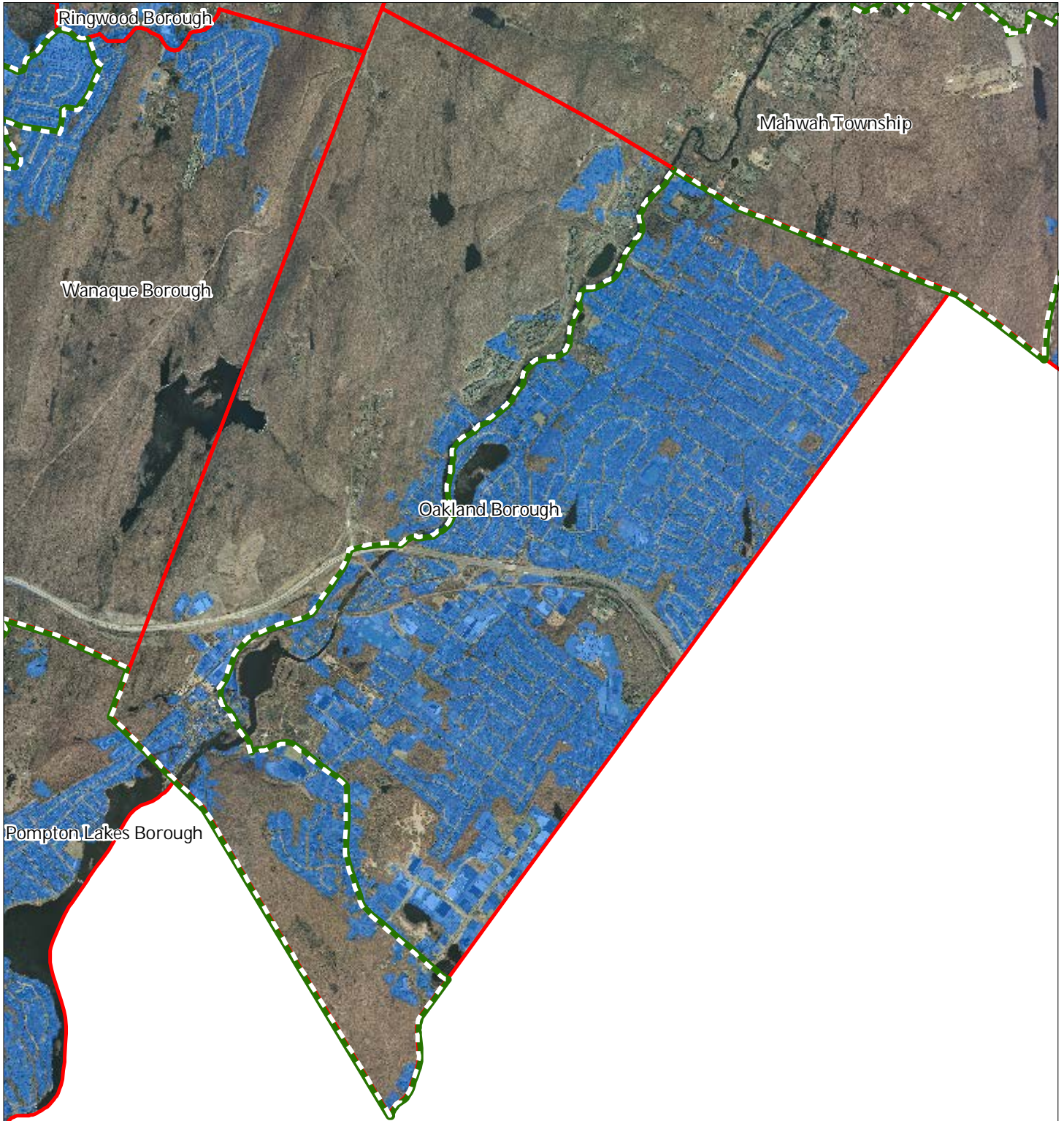
## Oakland Borough






1 inch = 0.583 miles

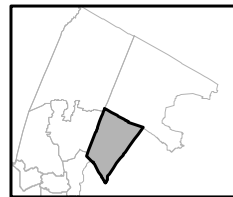
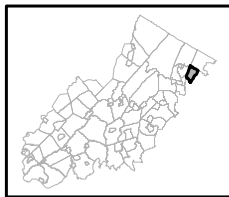


# Exhibit V: Public Community Water Systems



-  Public Community Water Systems
-  Preservation Area
-  Municipal Boundaries

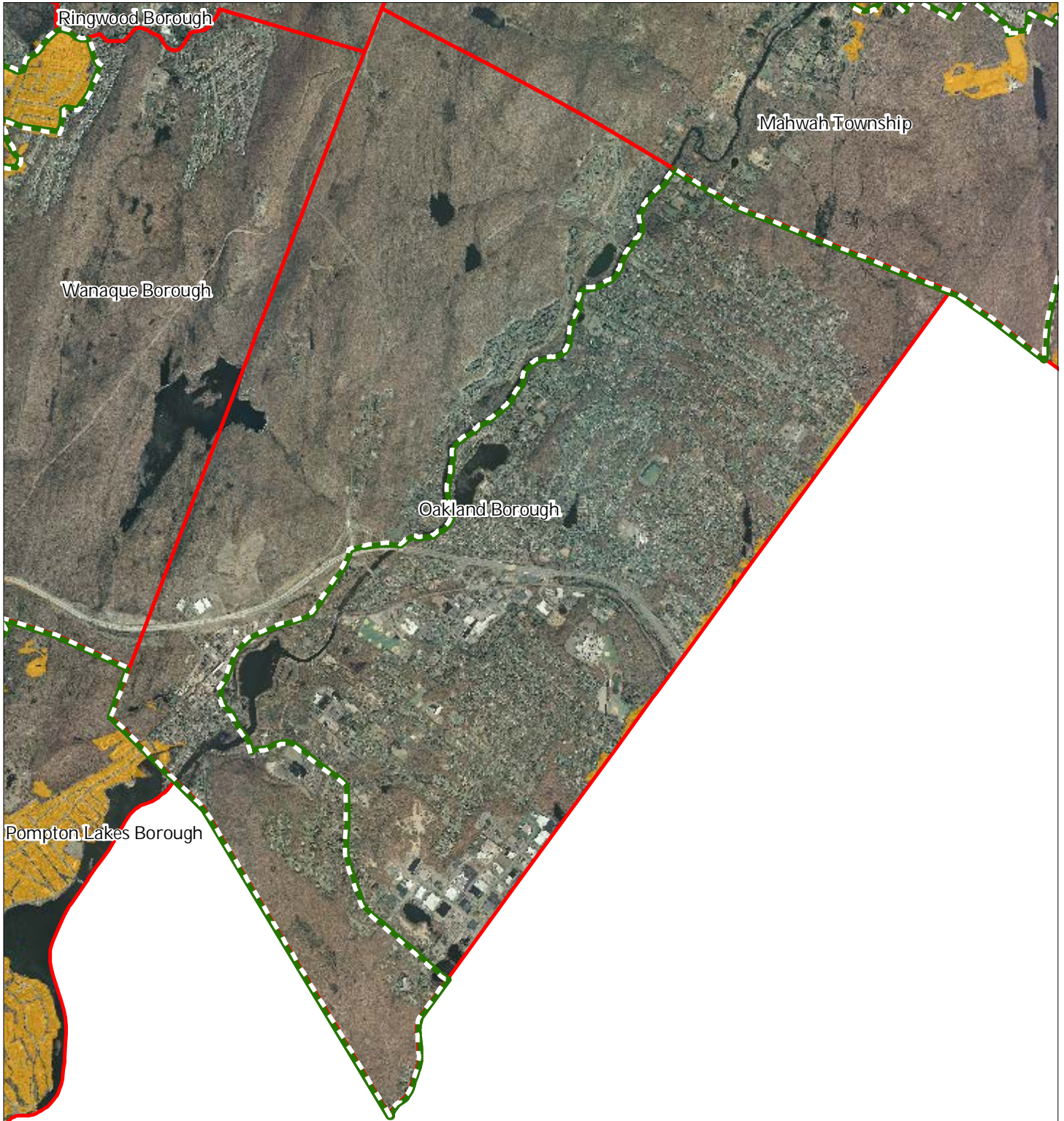
## Oakland Borough






1 inch = 0.583 miles



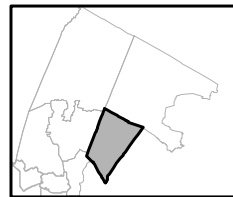
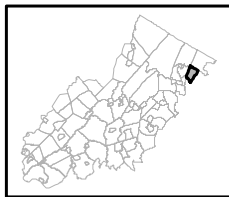
# Exhibit W: Highlands Domestic Sewerage Facilities



## Highlands Domestic Sewerage Facilities

-  Existing Area Served
-  Preservation Area
-  Municipal Boundaries

## Oakland Borough

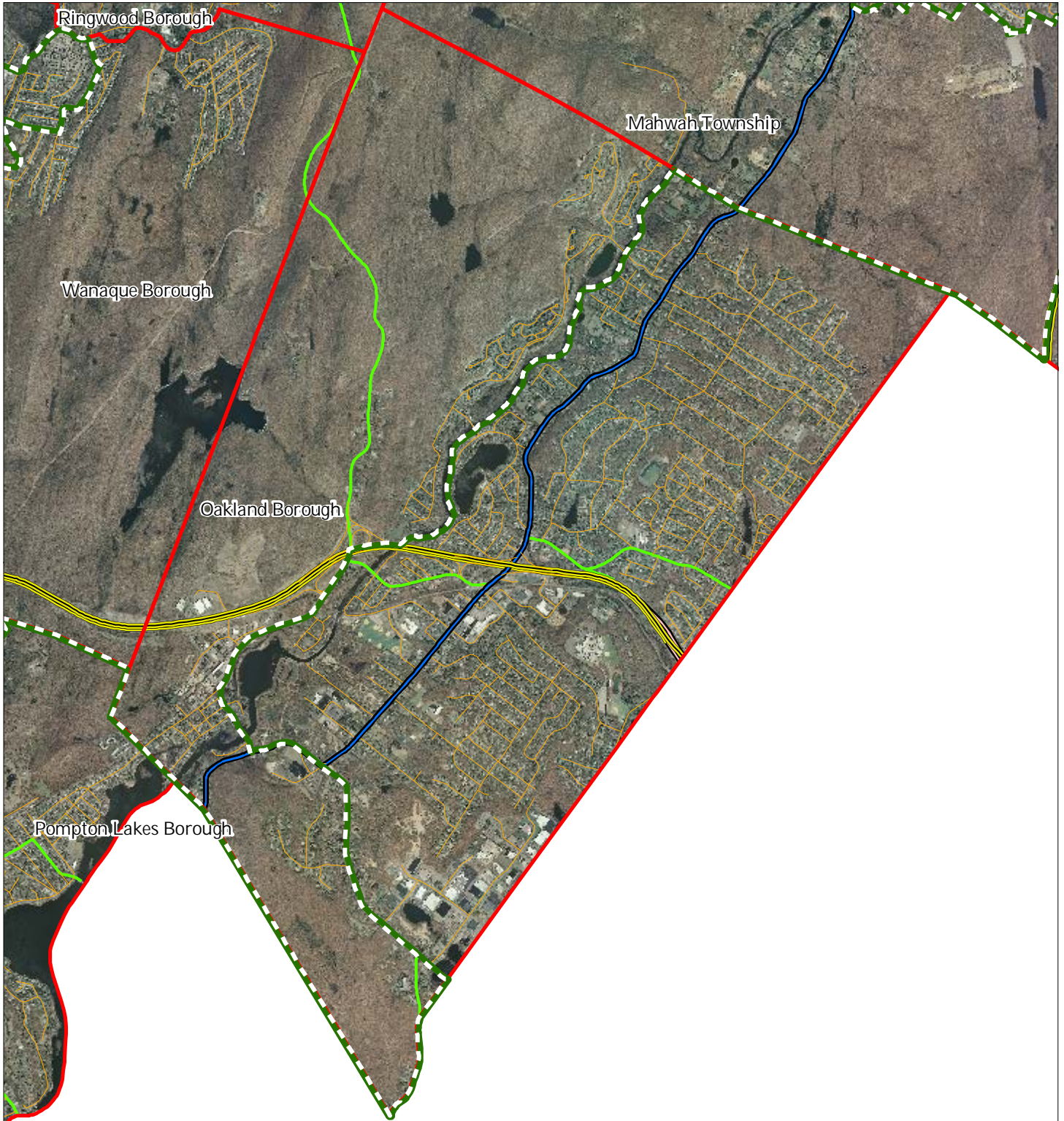


1 inch = 0.583 miles












# Exhibit Y: Highlands Roadway Network

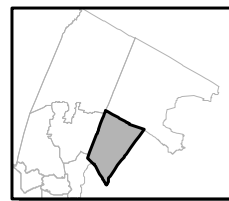
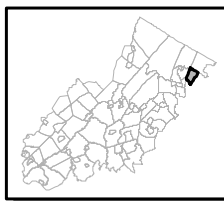


## Roadway Network

-  Interstate Highways
-  U.S. Routes
-  State Routes
-  County Routes
-  Local Routes

-  Preservation Area
-  Municipal Boundaries

## Oakland Borough

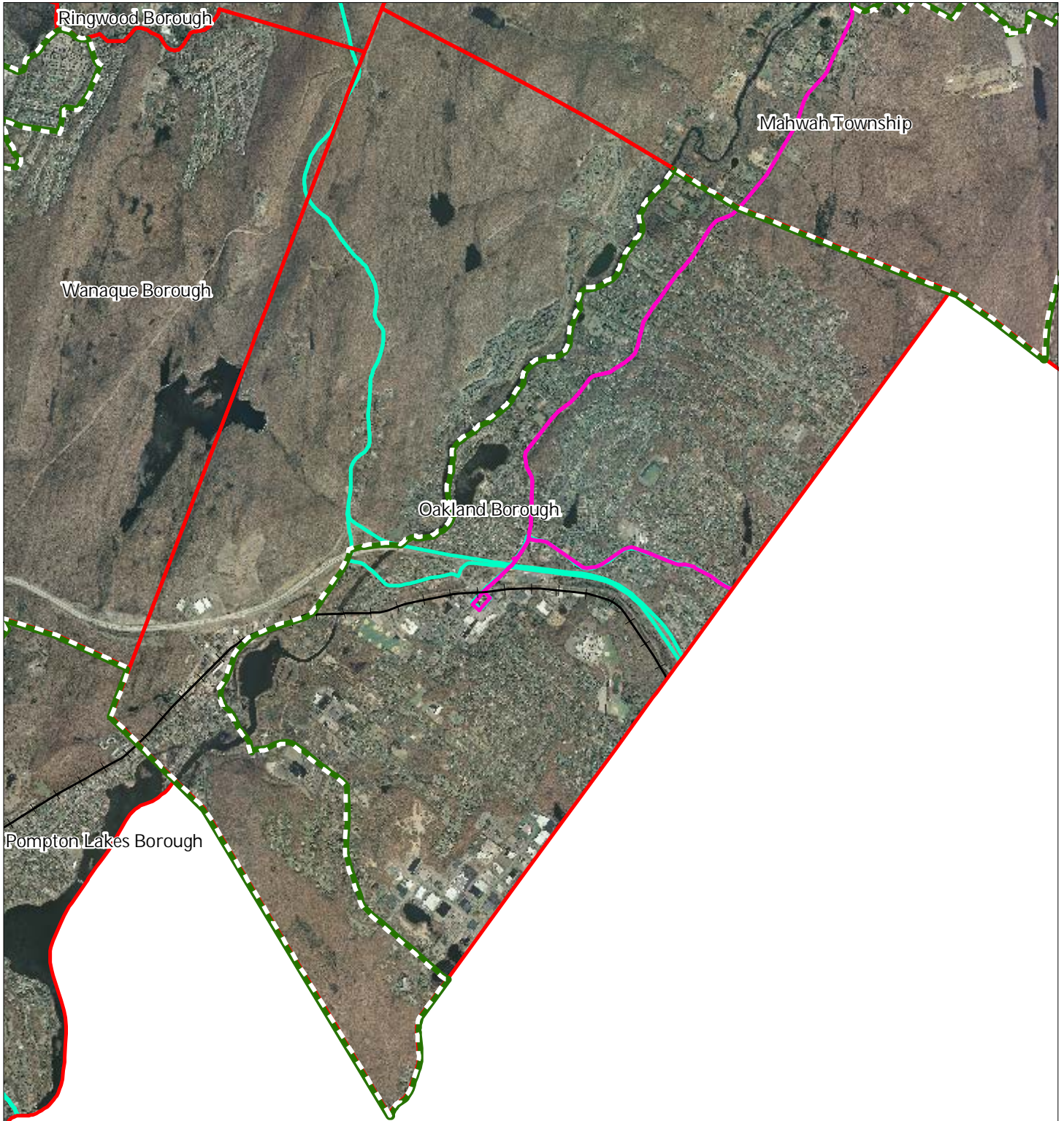


1 inch = 0.583 miles



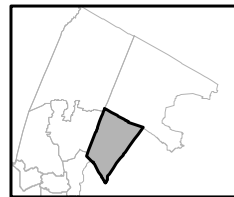
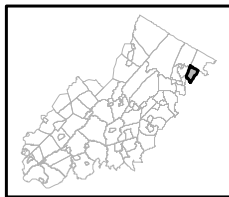
March 2014

# Exhibit Z: Highlands Transit Network



- |   |                      |
|---|----------------------|
| <b>Rail Network</b>                       | Rail Stations        |
| <i>Boonton Line</i>                       | Park and Ride Sites  |
| <i>Main Line &amp; Bergen County Line</i> | Private Bus Lines    |
| <i>Morris and Essex Line</i>              | NJ Transit Bus Lines |
| <i>Raritan Valley Line</i>                | Airports             |
| <b>Freight Rail Lines</b>                 |                      |
| <i>Freight Rail Lines</i>                 |                      |
| <i>Abandoned Freight Rail</i>             |                      |

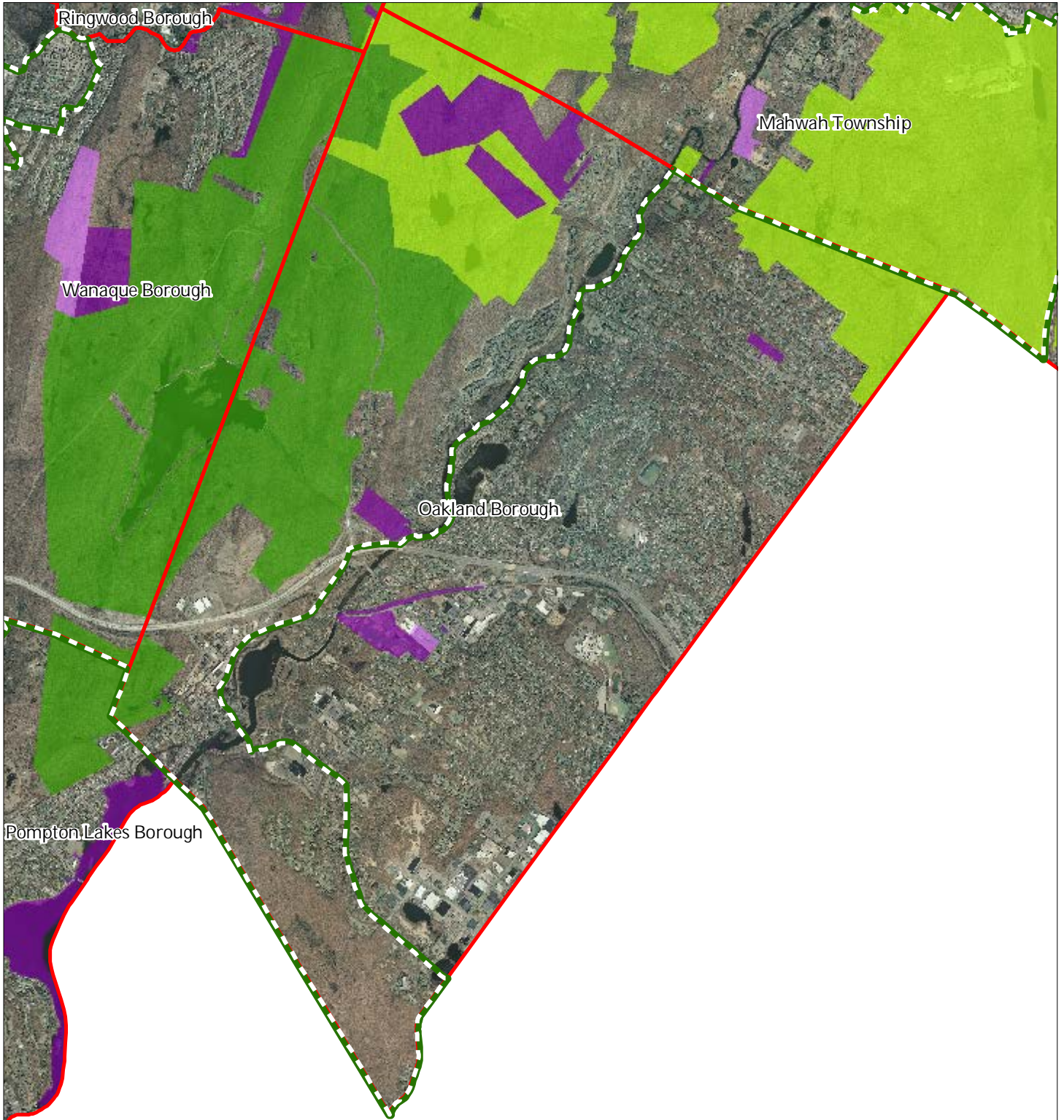
## Oakland Borough



1 inch = 0.583 miles

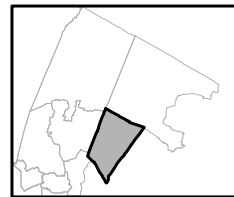
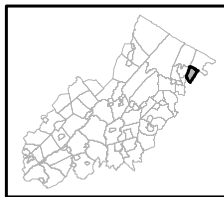


# Exhibit AA: Preserved Lands



- |   |                               |
|---|-------------------------------|
| <b>Preserved Lands</b>                  | <b>Conservation Easements</b> |
| Federal Open Space                      | Green Acres                   |
| State Open Space                        | <b>SADC Easements</b>         |
| County Open Space                       | SADC Final                    |
| Municipal Open Space                    | SADC Preserved                |
| Non-Profit/Private Open Space           | Municipal Boundaries          |
| Water Supply Watershed Lands            | Preservation Area             |
| Preserved Farmland                      |                               |
| Highlands Transfer of Development Lands |                               |

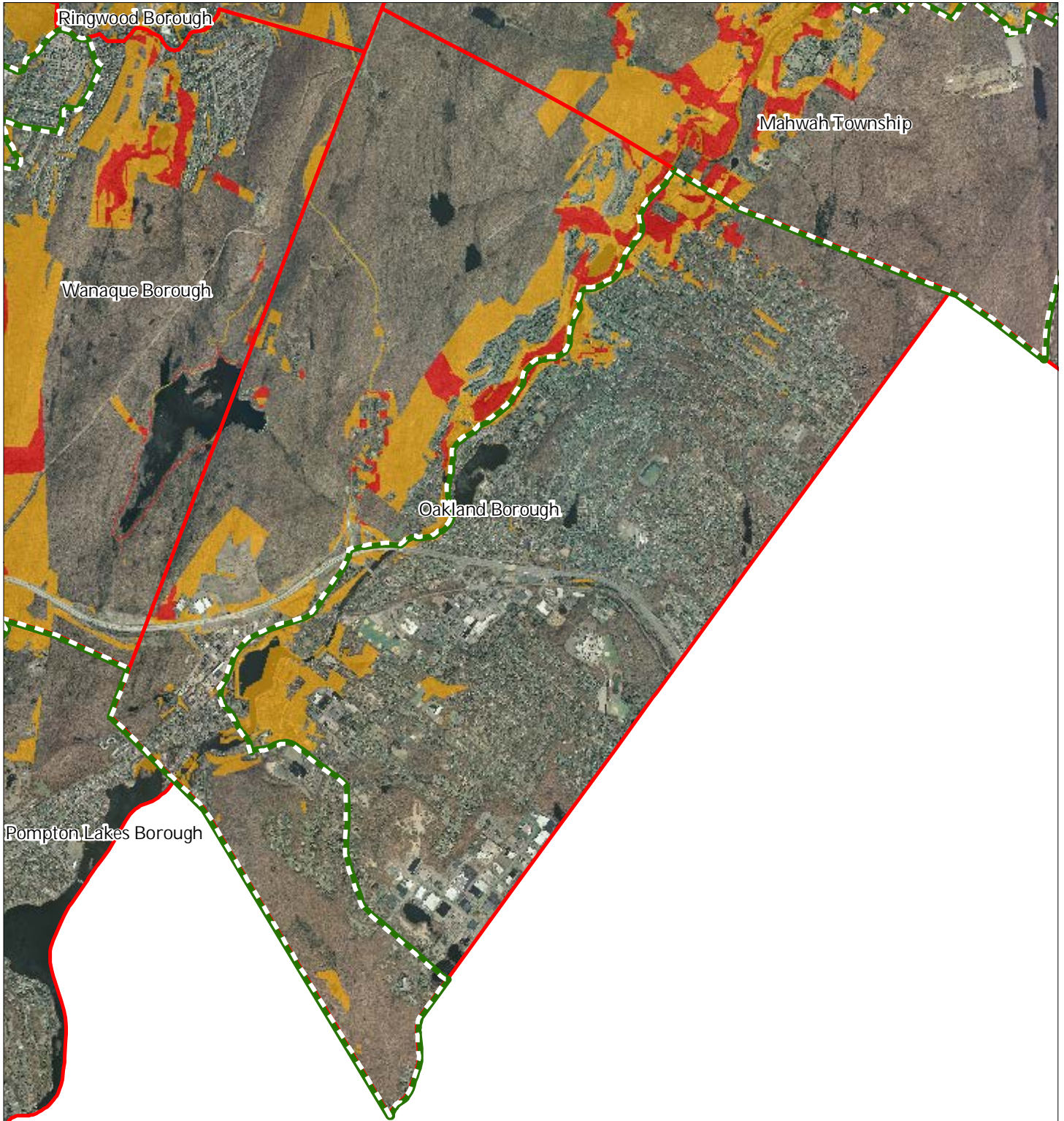
## Oakland Borough







1 inch = 0.583 miles



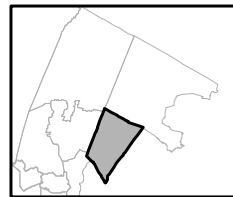
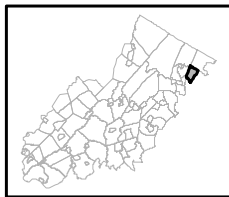
# Exhibit BB: Highlands Conservation Priority Areas



Conservation Priority Area

-  Moderate
-  High
-  Preservation Area
-  Municipal Boundaries

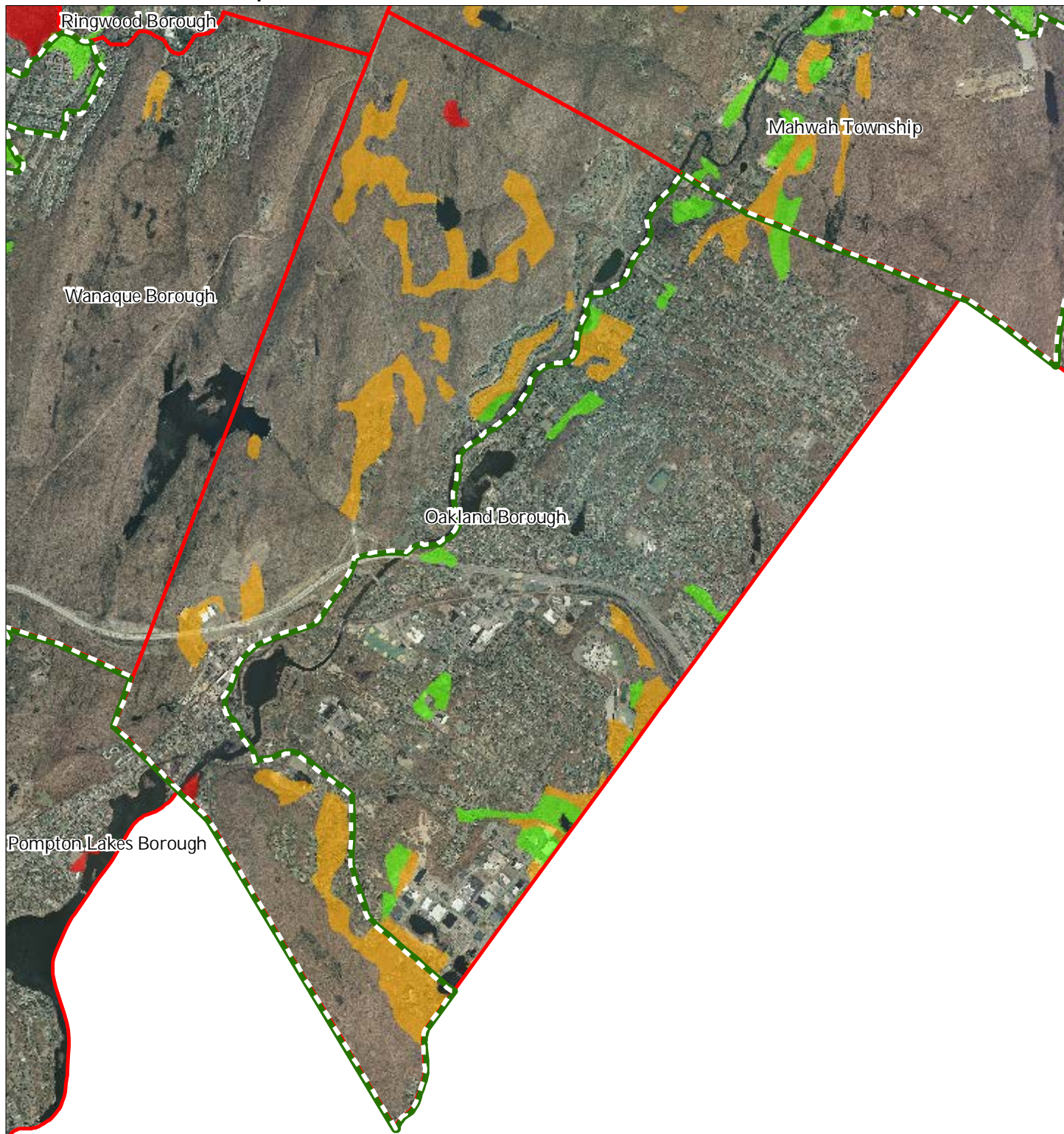
## Oakland Borough



1 inch = 0.583 miles



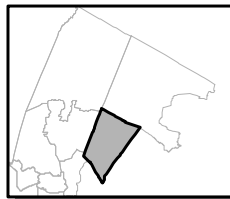
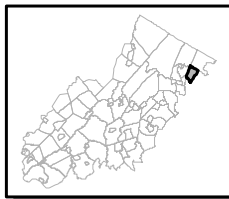
# Exhibit EE: Important Farmland Soils



### Important Farmland Soils

-  Prime Farmland
-  Farmland of Local Importance
-  Farmland of Statewide Importance
-  Farmland of Unique Importance
-  Preservation Area
-  Municipal Boundaries

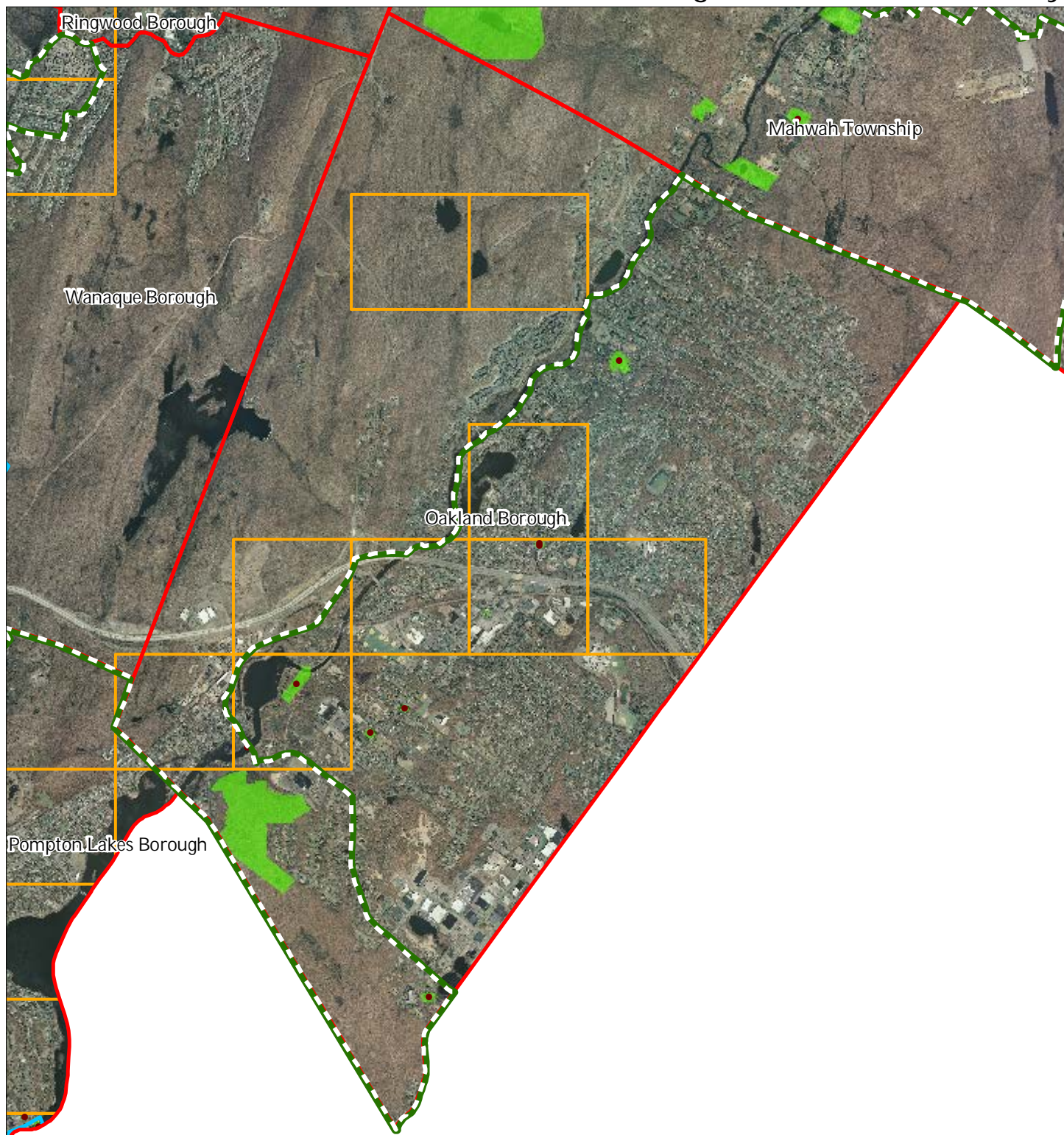
## Oakland Borough



1 inch = 0.583 miles

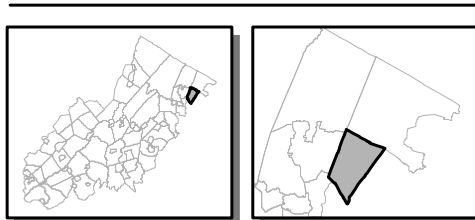


# Exhibit HH: Historic, Cultural, and Archaeological Resources Inventory



-  Preservation Area
-  Municipal Boundaries
-  Archaeological Grids (1 sqmi)
-  NJ Historic Districts
-  Historic Property Points
-  Historic Property Polygons

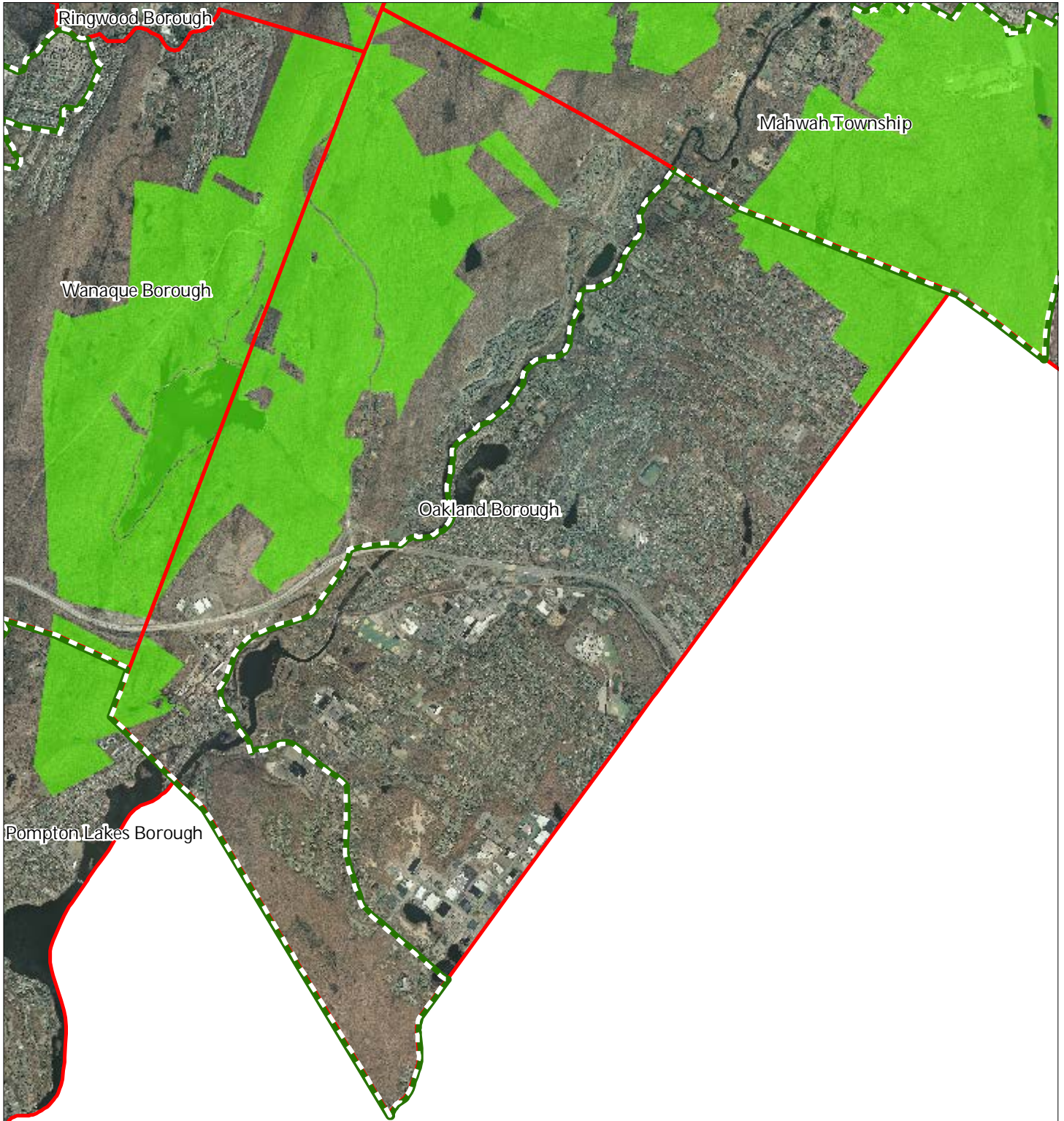
## Oakland Borough






1 inch = 0.583 miles

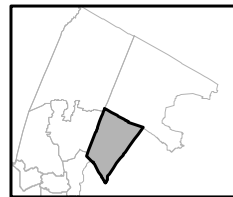
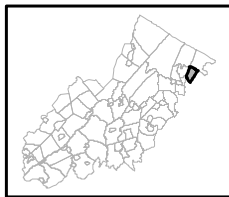


# Exhibit II: Baseline Scenic Resources Inventory



-  Scenic Resources
-  Municipal Boundaries
-  Preservation Area

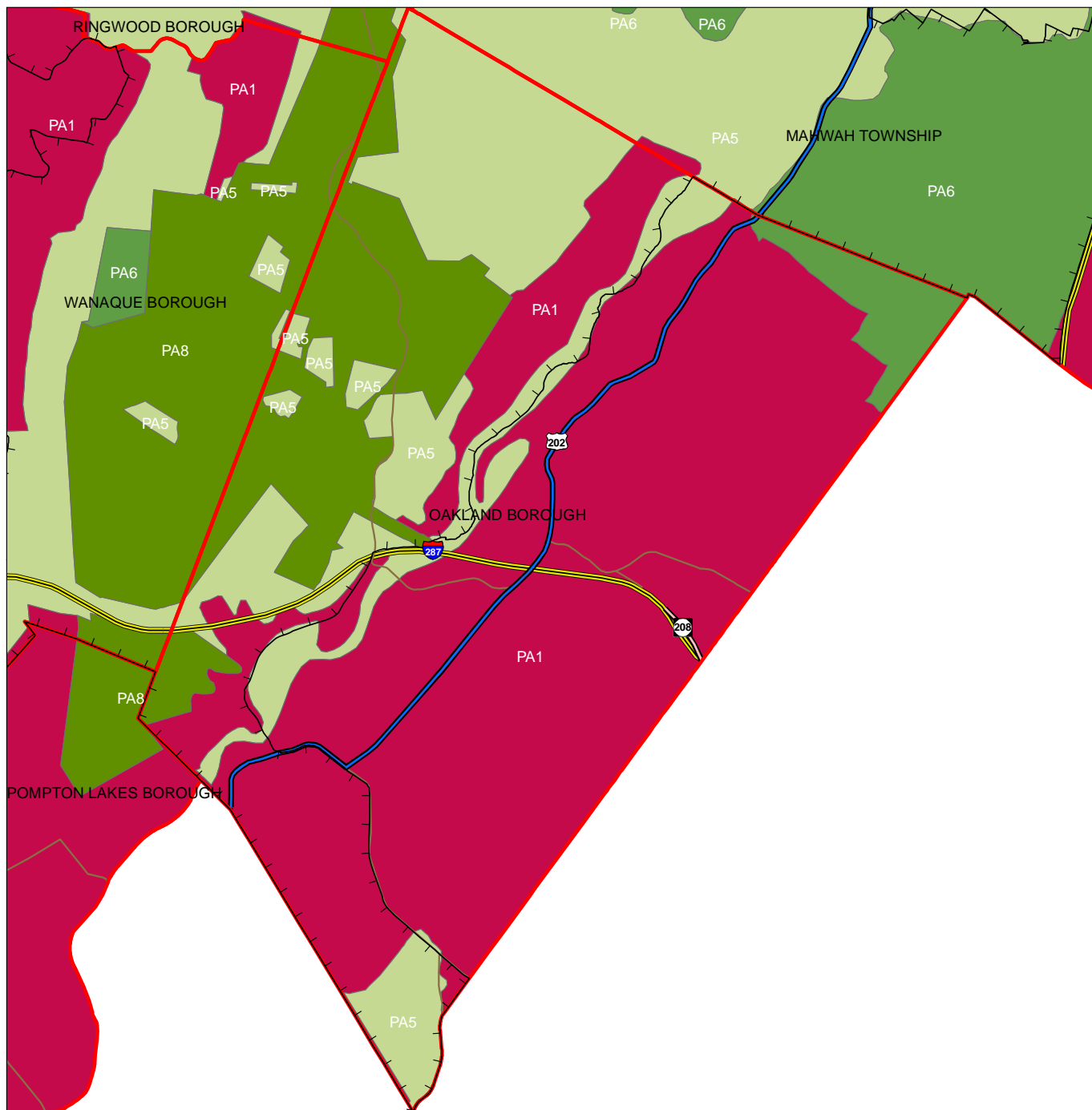
## Oakland Borough



1 inch = 0.583 miles



# Exhibit JJ: SDRP Planning Areas



**Legend**

- Preservation Area
- Municipal Boundaries
- Interstate Highways
- U.S. Routes
- State Routes
- County Routes
- Designated Centers\*

**State Planning Areas\***

- METROPOLITAN (PA1)
- SUBURBAN (PA2)
- FRINGE (PA3)
- RURAL (PA4)
- RURAL ENVIRONMENTALLY SENSITIVE (PA42)
- ENVIRONMENTALLY SENSITIVE (PA5)
- PARK (PA6)
- FEDERAL PARK (PA7)
- STATE PARK (PA8)
- WATER (PA11)
- MILITARY (PA12)

1 inch equals 0.62 miles

\* All designated centers expired on 1/7/2008 except Byram (expires 5/19/2010), Stanhope (expires 10/16/2008), and Sparta and Vernon (expire 7/16/2009). Center designation may be redesignated by the State Planning Commission and the Highlands Council. State Planning Areas are from the State Development and Redevelopment Plan.

