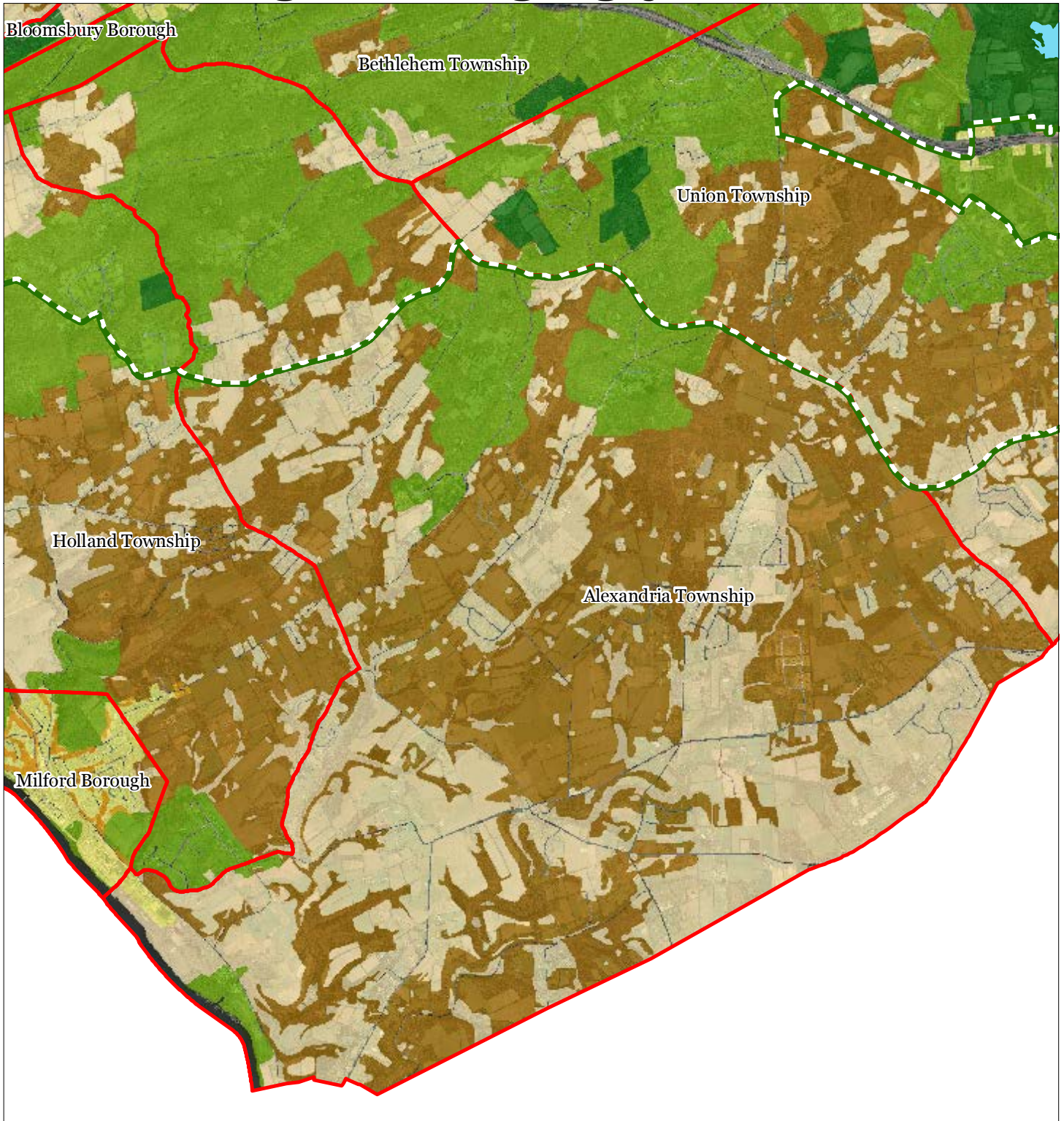


Exhibit A: Highlands Preservation Area Master Plan Element



Regional Master Plan Overlay Zone Designation

- | | |
|--|-----------------------------|
| Protection | Lakes Greater Than 10 acres |
| Conservation | Preservation Area |
| Existing Community | Municipal Boundaries |
| Sub-Zone | |
| Existing Community Environmentally Constrained | |
| Conservation Environmentally Constrained | |
| Lake Community | |
| Wildlife Management | |

Alexandria Township



1 inch = 0.94 miles



February 2012

Exhibit B - Land Use

Figure 4

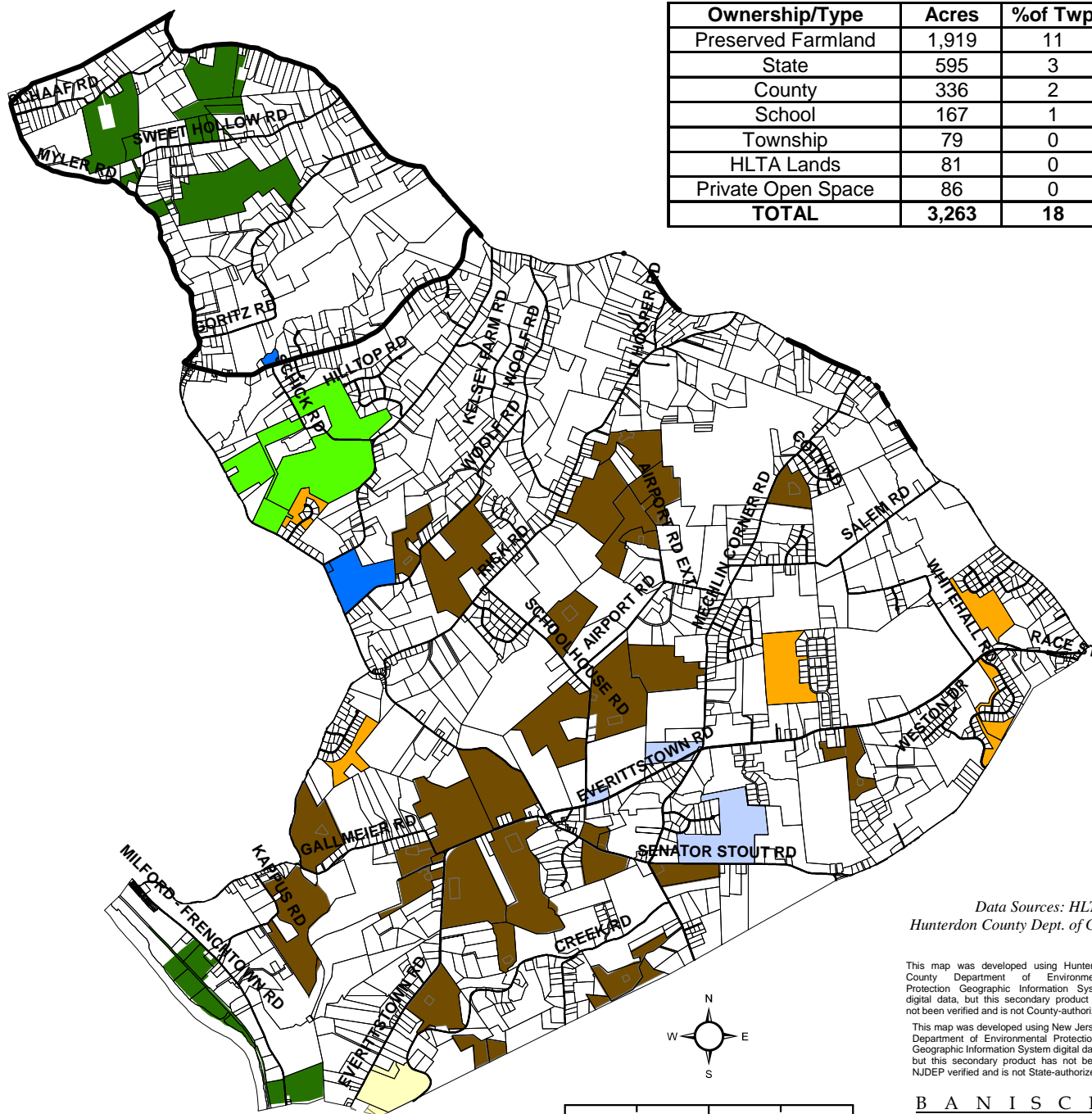
Preserved Lands

Alexandria Township,
 Hunterdon County, NJ
 October 2011

Legend

-  Highlands Preservation Area Boundary
-  Municipal Open Space
-  Private Open Space
-  HLTA Lands
-  County Open Space
-  State Open Space
-  Preserved Farm
-  Public Schools

Ownership/Type	Acres	% of Twp
Preserved Farmland	1,919	11
State	595	3
County	336	2
School	167	1
Township	79	0
HLTA Lands	81	0
Private Open Space	86	0
TOTAL	3,263	18

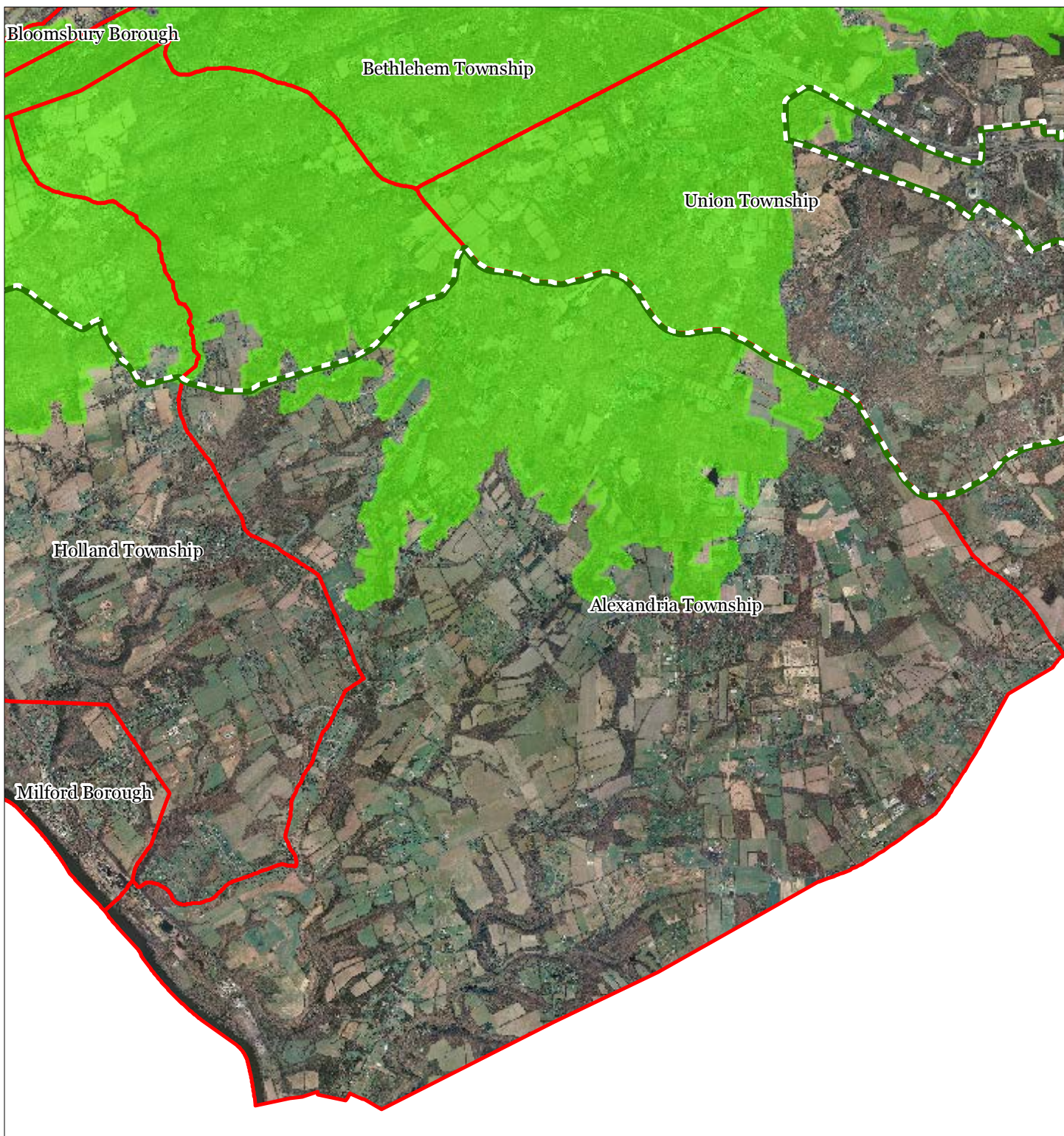





Data Sources: HLTA,
 Hunterdon County Dept. of GIS

This map was developed using Hunterdon County Department of Environmental Protection Geographic Information System digital data, but this secondary product has not been verified and is not County-authorized.

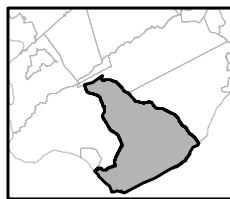
This map was developed using New Jersey Department of Environmental Protection Geographic Information System digital data, but this secondary product has not been NJDEP verified and is not State-authorized.

Exhibit E: Forest Resource Area



-  Forest Resource Area
-  Preservation Area
-  Municipal Boundaries

Alexandria Township






1 inch = 0.94 miles

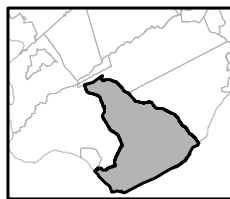


Exhibit F: Total Forest Area



-  Forested Areas
-  Preservation Area
-  Municipal Boundaries

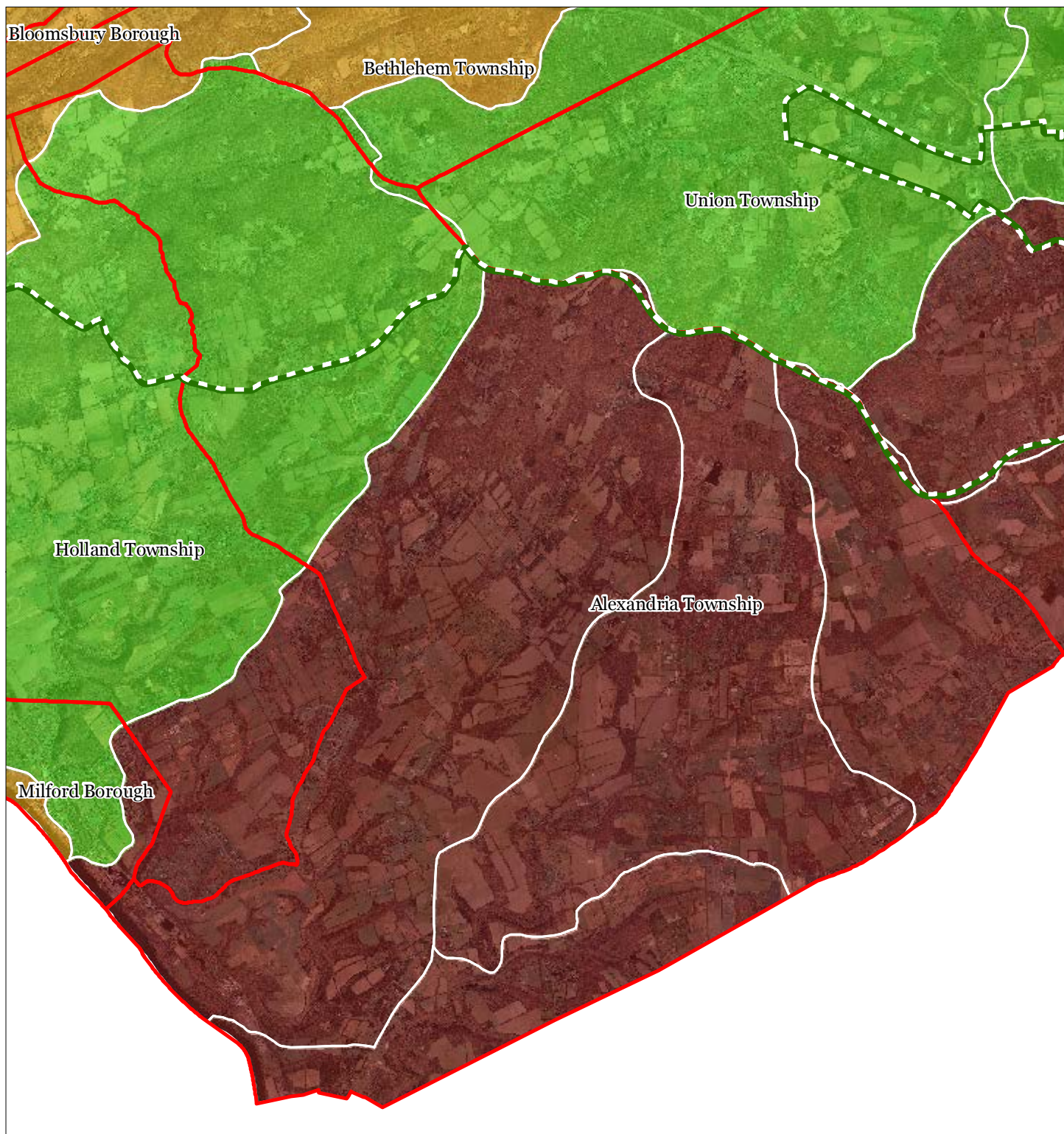
Alexandria Township








1 inch = 0.94 miles



Exhibit G: Forest Subwatersheds



Forest Integrity by HUC14 Subwatershed

-  *Low*
-  *Moderate*
-  *High*
-  Preservation Area
-  Municipal Boundaries

Alexandria Township

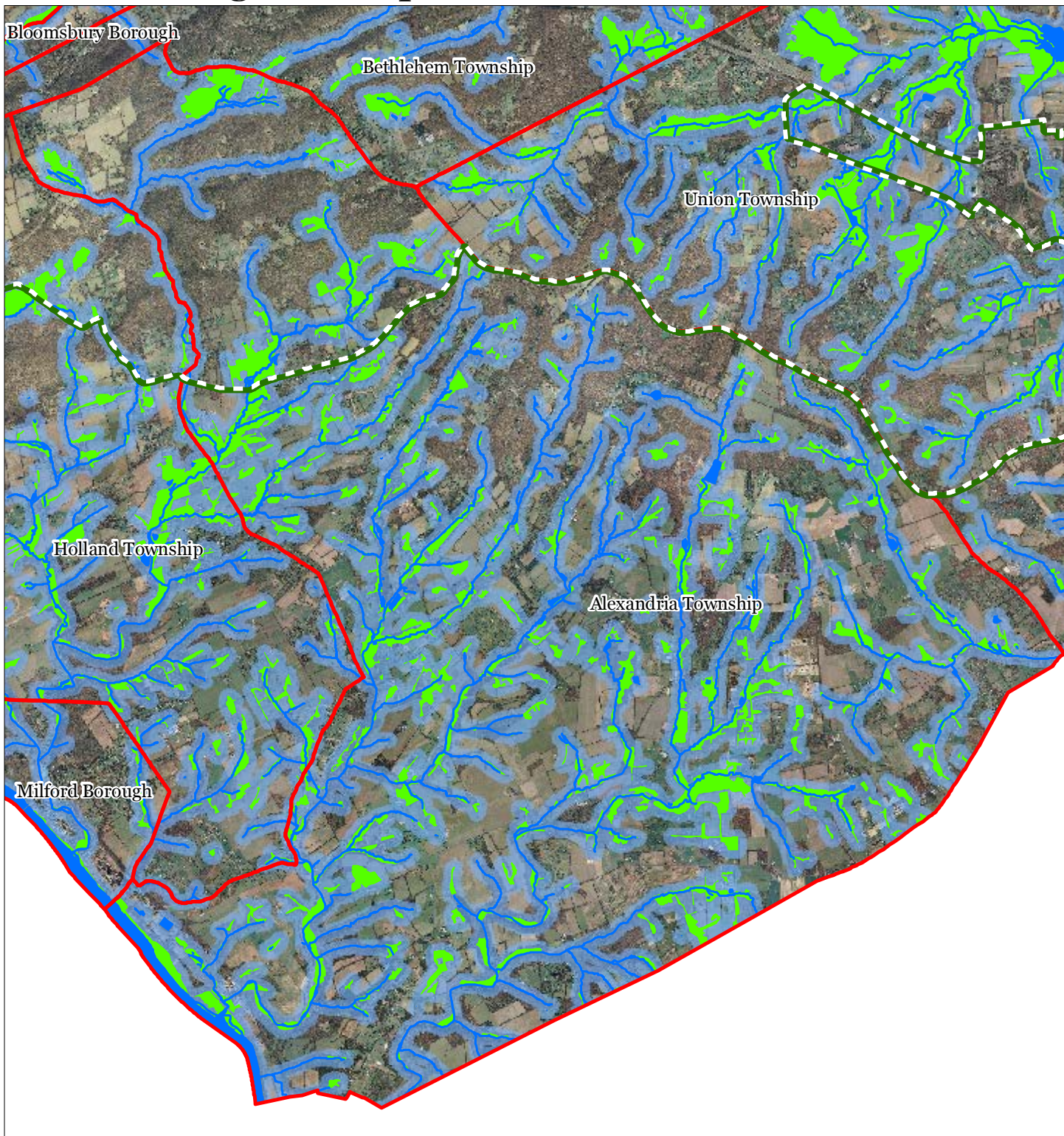


1 inch = 0.94 miles



February 2012

Exhibit H: Highlands Open Waters



- Highlands Open Water Buffers (300ft)
- Streams
- Wetlands
- Lakes & Ponds
- Preservation Area
- Municipal Boundaries

Alexandria Township

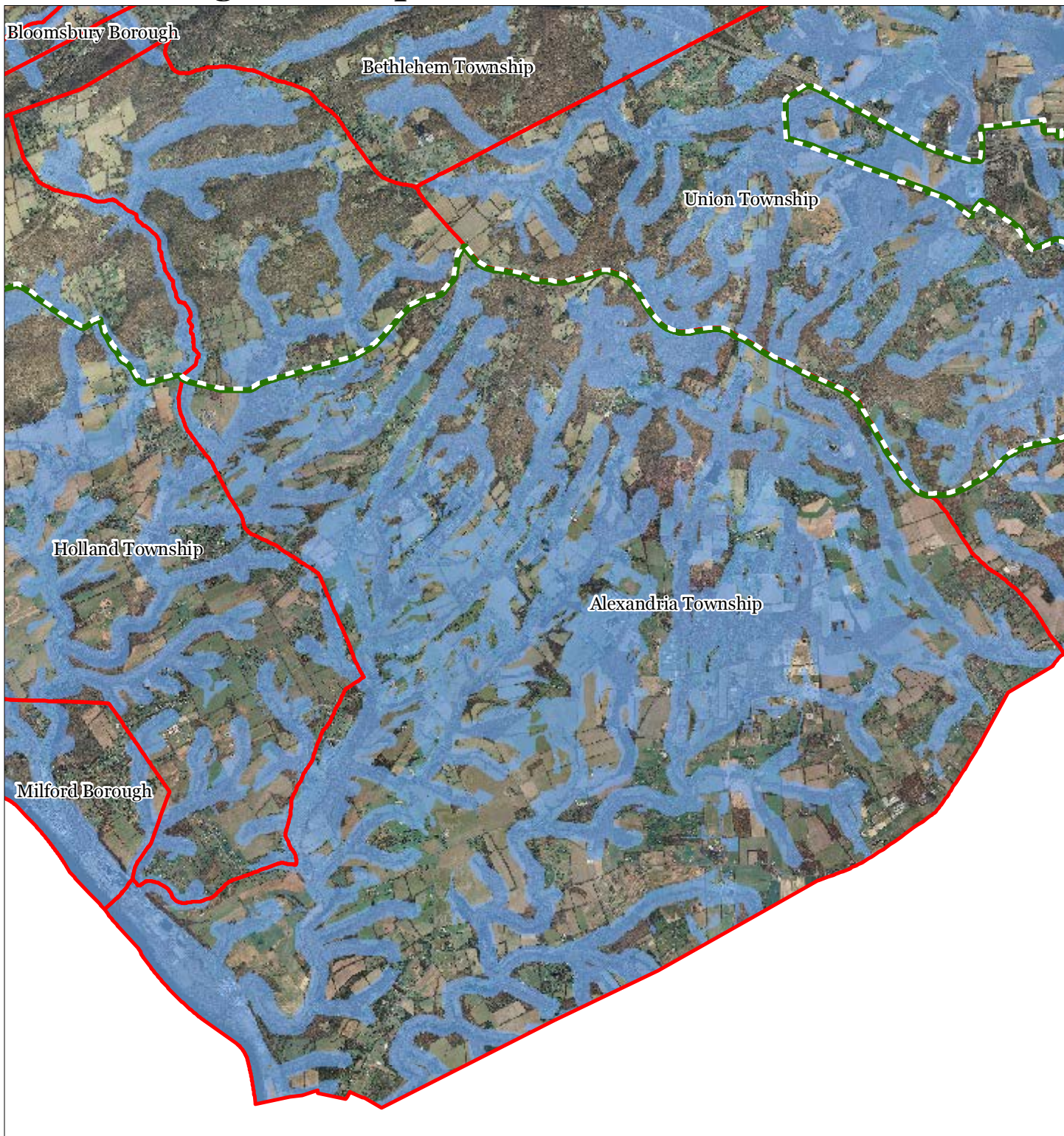


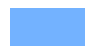


1 inch = 0.94 miles



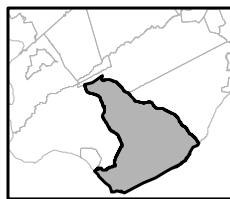
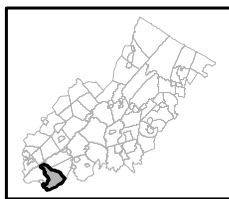
February 2012

Exhibit I: Highlands Riparian Areas



-  Riparian Area
-  Preservation Area
-  Municipal Boundaries

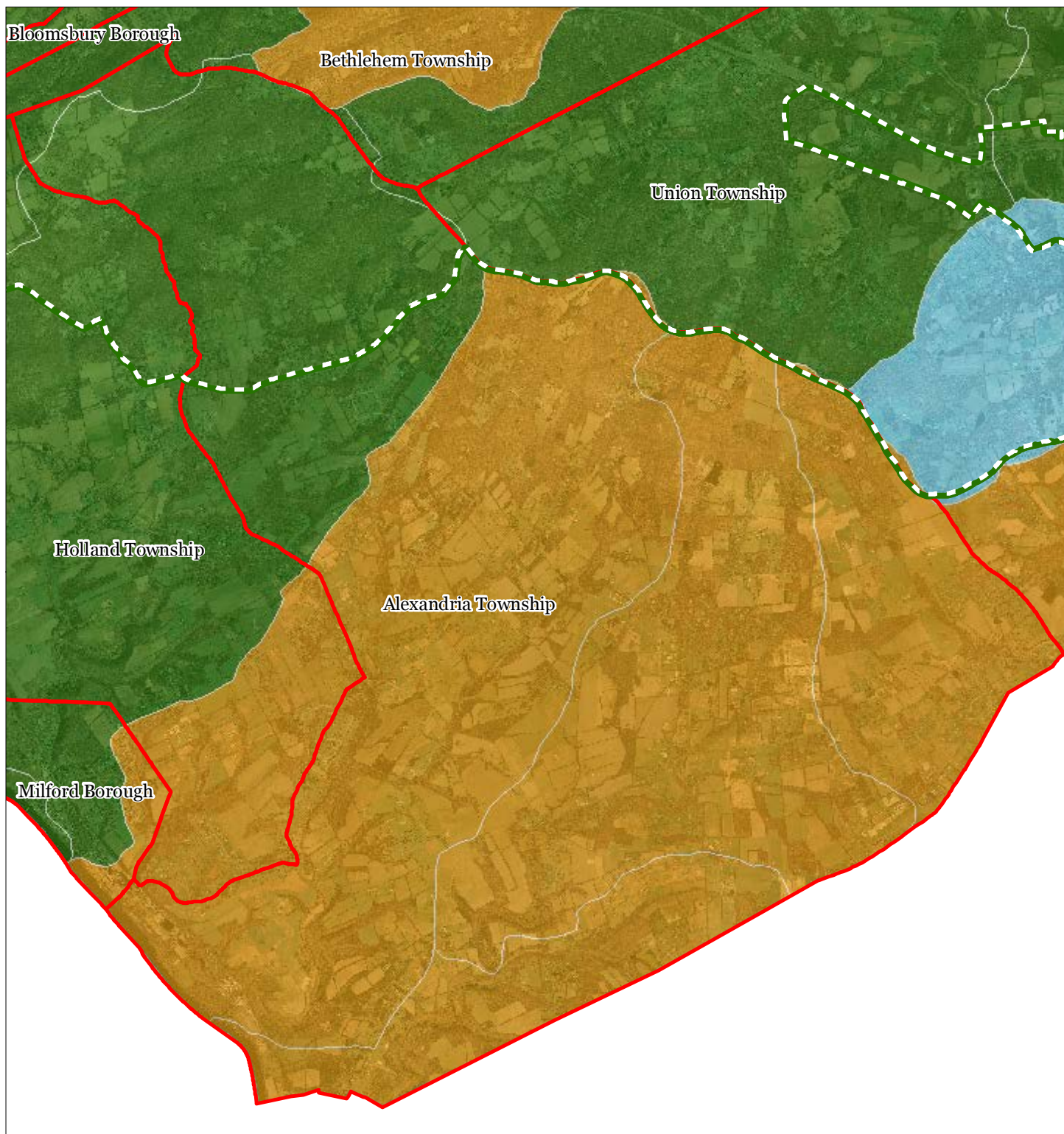
Alexandria Township



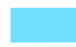




1 inch = 0.94 miles



Exhibit J: Watershed Values



Watershed Values by HUC14 Subwatershed

-  Low
-  Moderate
-  High
-  Preservation Area
-  Municipal Boundaries

Alexandria Township

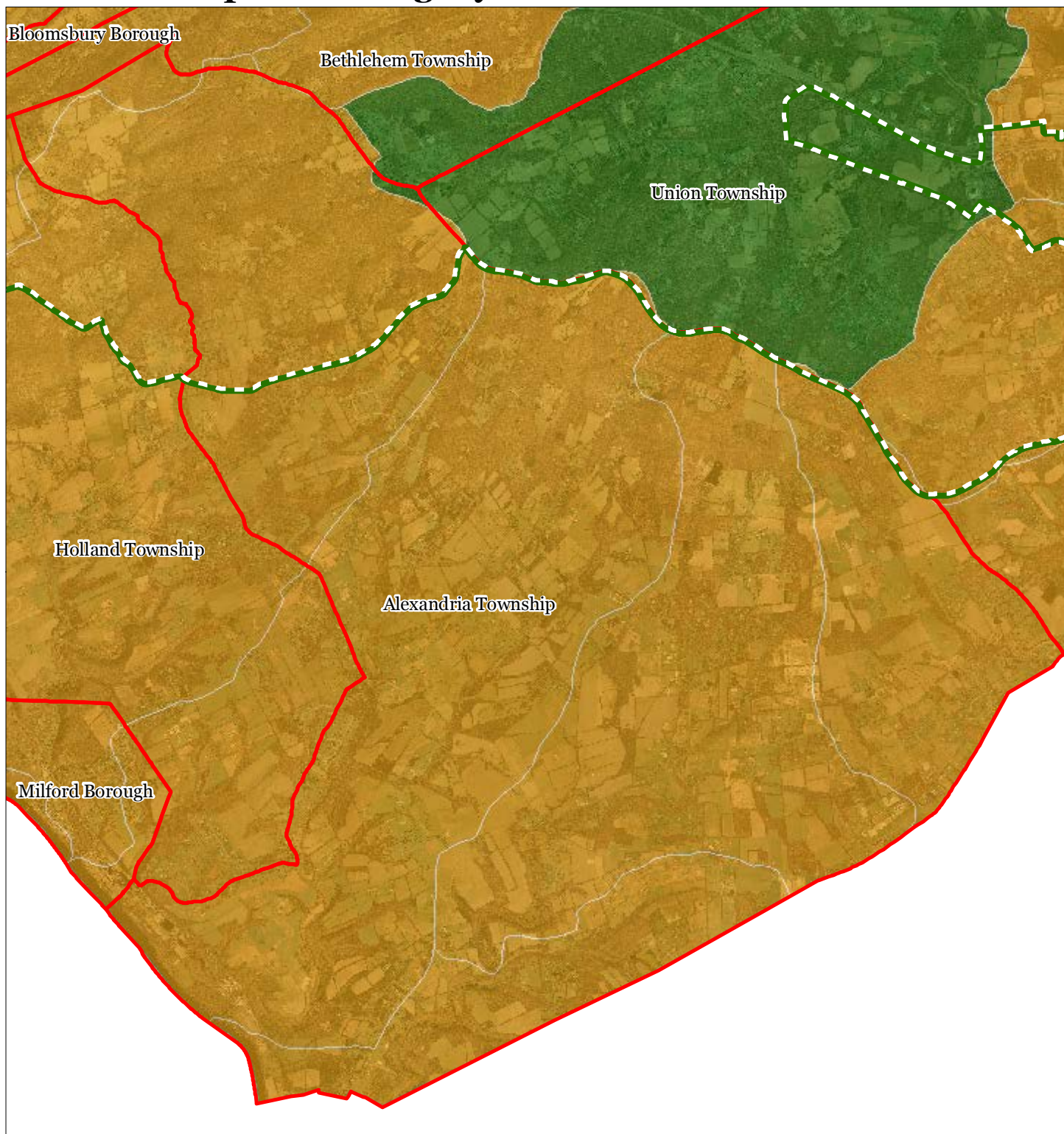


1 inch = 0.94 miles



February 2012

Exhibit K: Riparian Integrity



Riparian Integrity by HUC14 Subwatershed

- Low
- Moderate
- High
- Preservation Area
- Municipal Boundaries

Alexandria Township

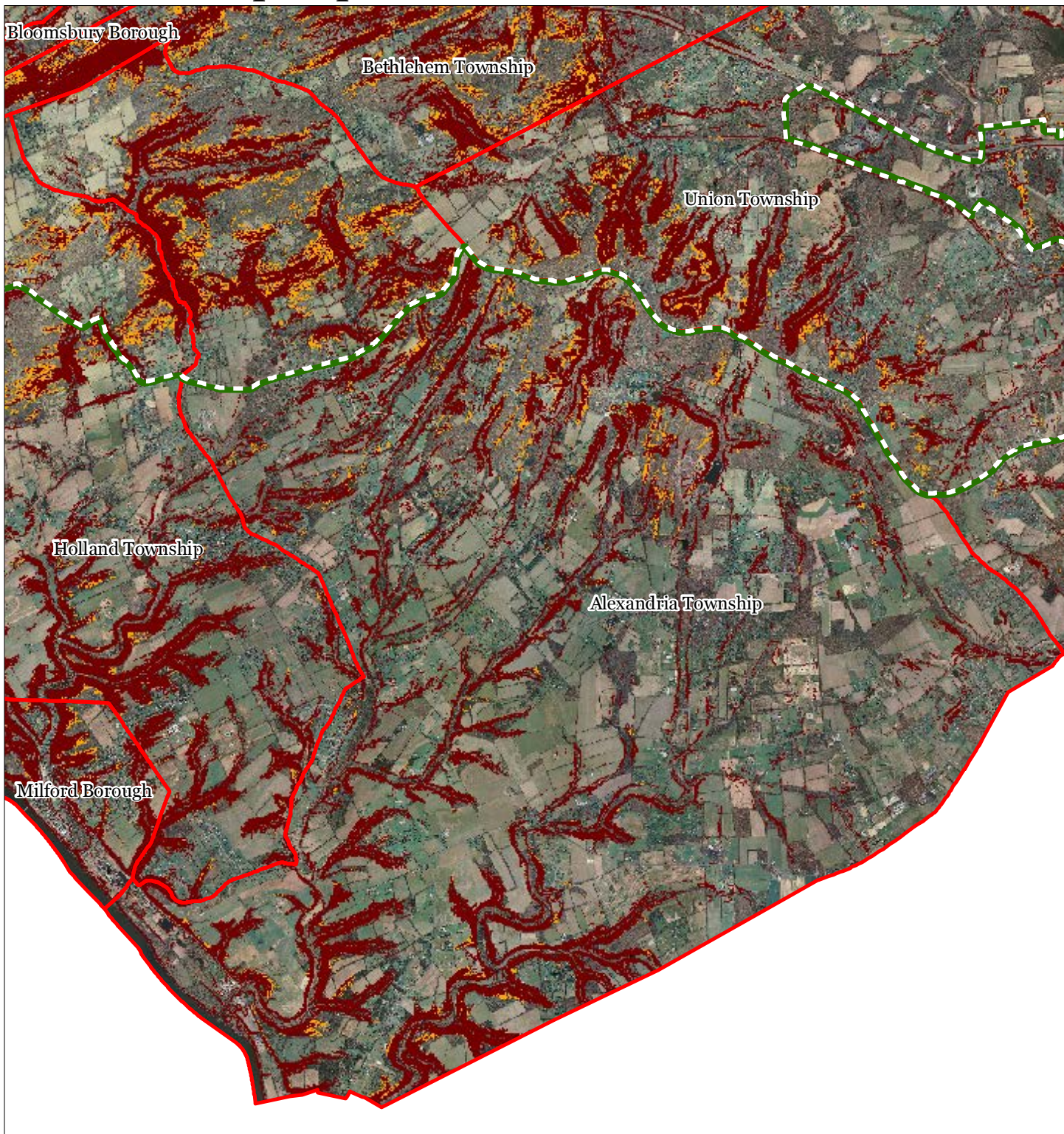


1 inch = 0.94 miles







February 2012

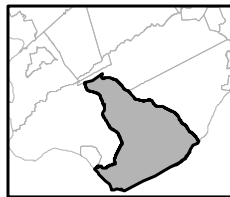
Exhibit L: Steep Slope Protection Areas



Steep Slopes

-  Moderate
-  Severe
-  Preservation Area
-  Municipal Boundaries

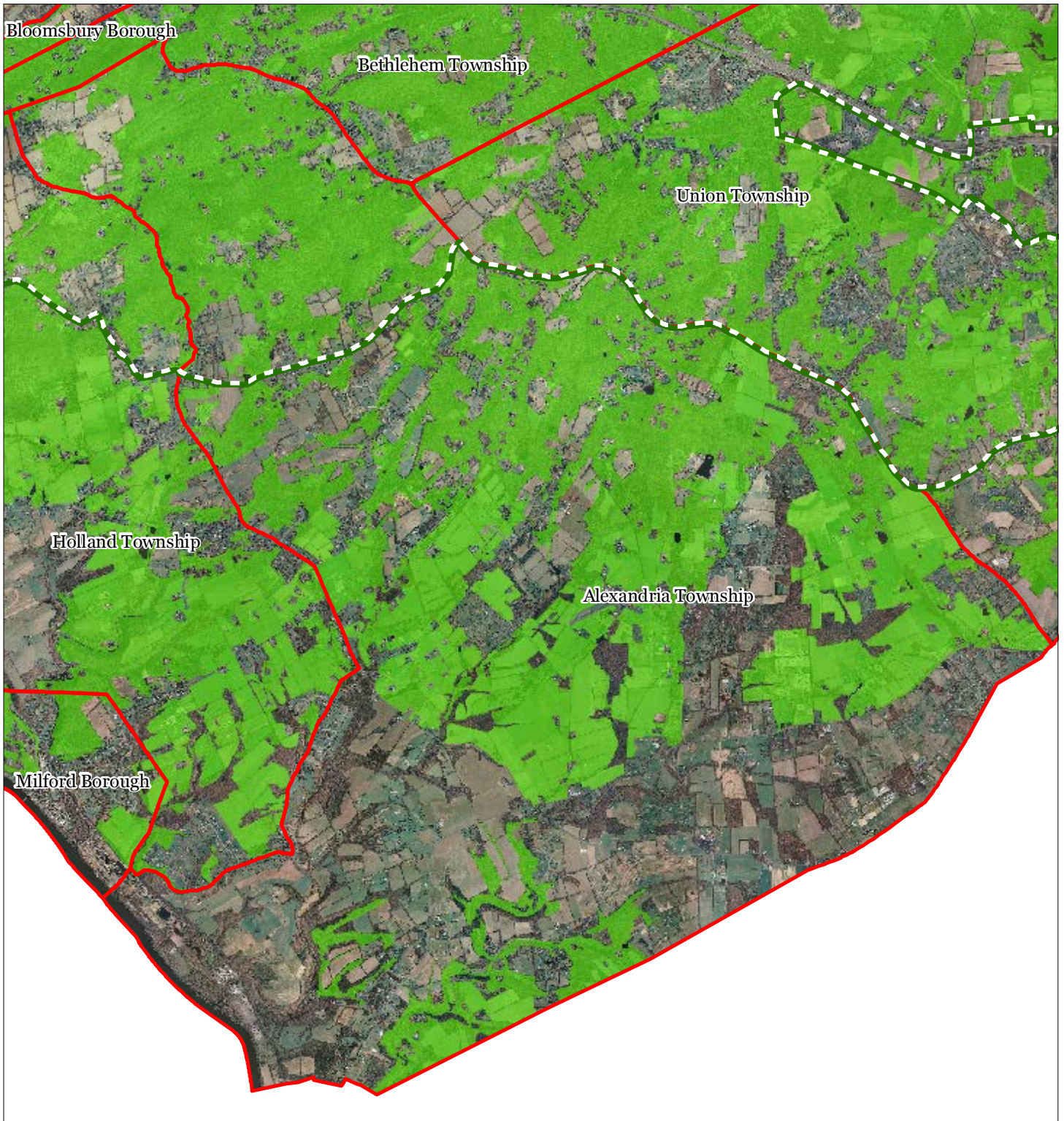
Alexandria Township






1 inch = 0.94 miles

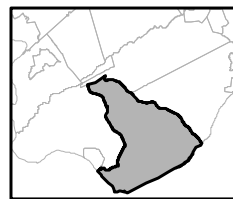


Exhibit M: Critical Wildlife Habitat



-  Critical Wildlife Habitat
-  Preservation Area
-  Municipal Boundaries

Alexandria Township






1 inch = 0.94 miles

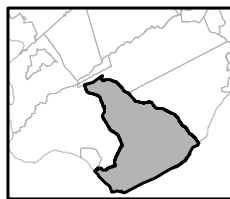


Exhibit O: Vernal Pools



-  Vernal Pools + 1000ft Buffer
-  Preservation Area
-  Municipal Boundaries

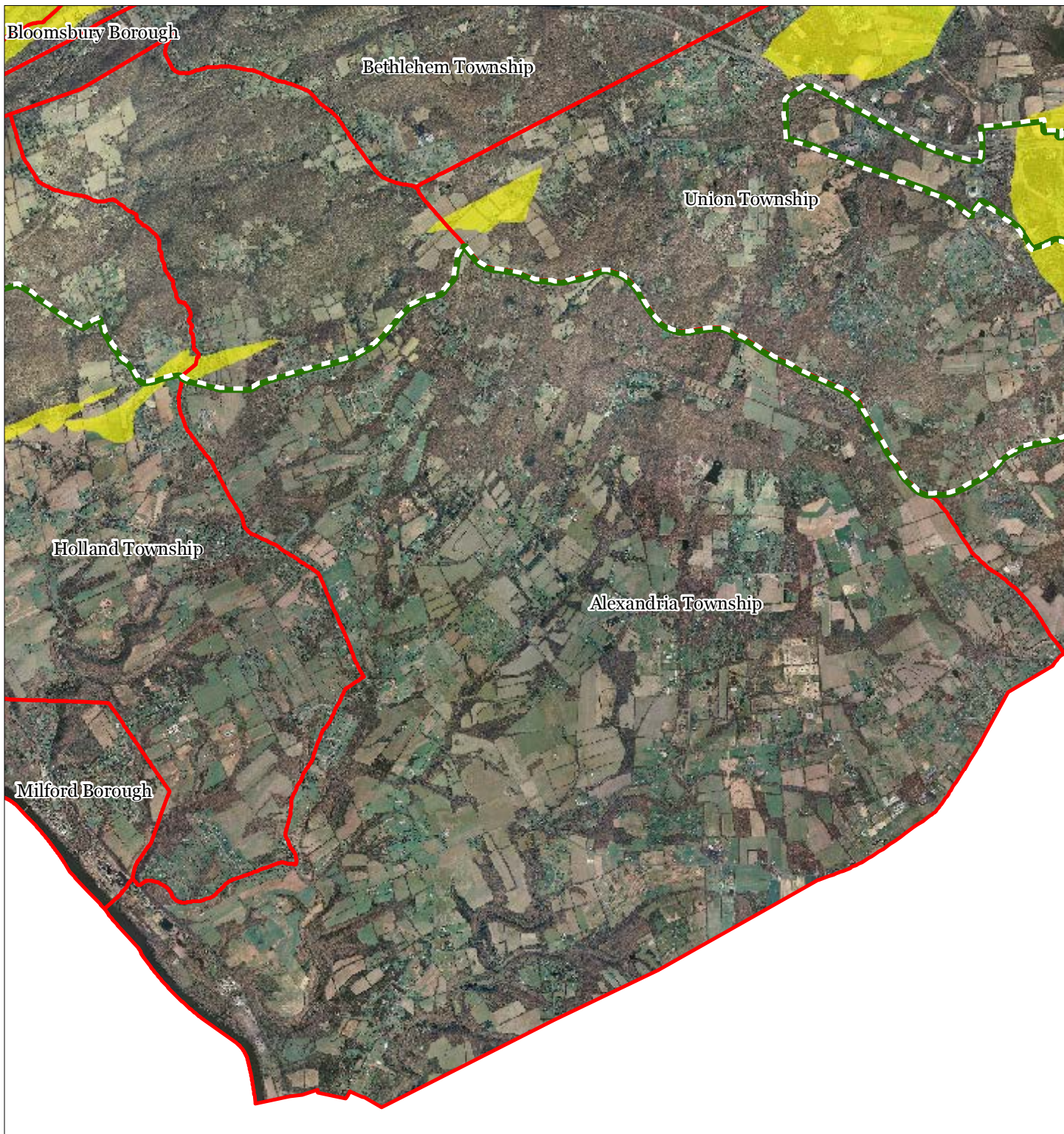
Alexandria Township






1 inch = 0.94 miles

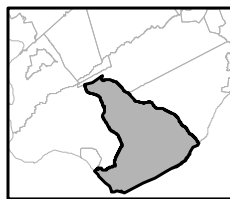
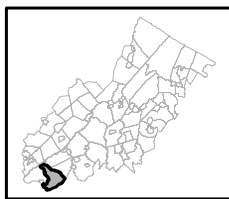


Exhibit P: Carbonate Rock Areas



-  Carbonate Rock Area
-  Preservation Area
-  Municipal Boundaries

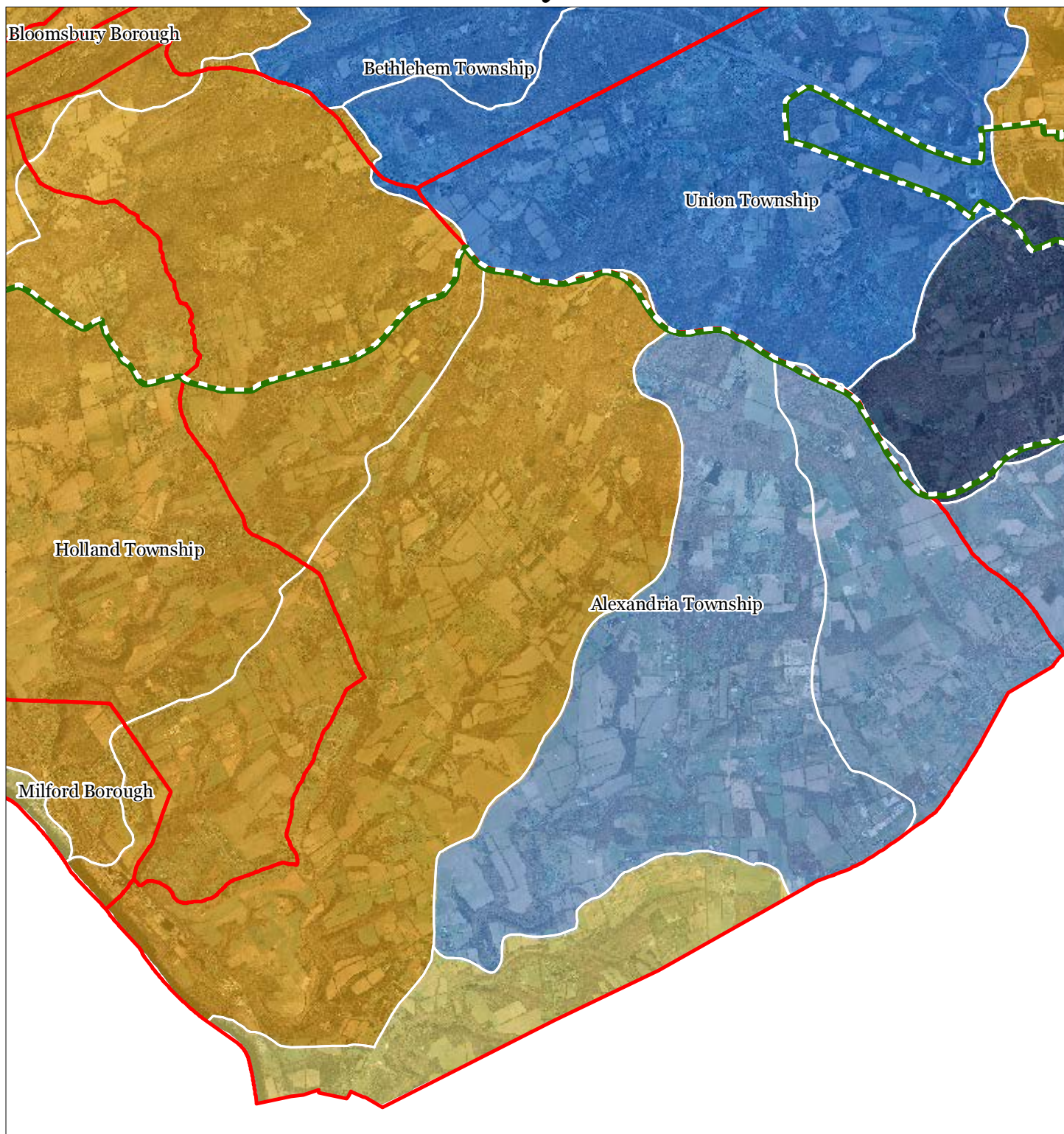
Alexandria Township



1 inch = 0.94 miles

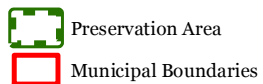
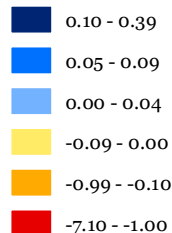


Exhibit R: Net Water Availability

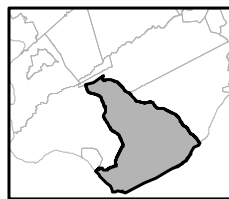


Net Water Availability By HUC14

Million Gallons Per Day (MGD)



Alexandria Township






1 inch = 0.94 miles



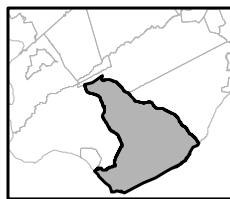
February 2012

Exhibit S: Prime Ground Water Recharge Areas



-  Prime Ground Water Recharge Areas
-  Preservation Area
-  Municipal Boundaries

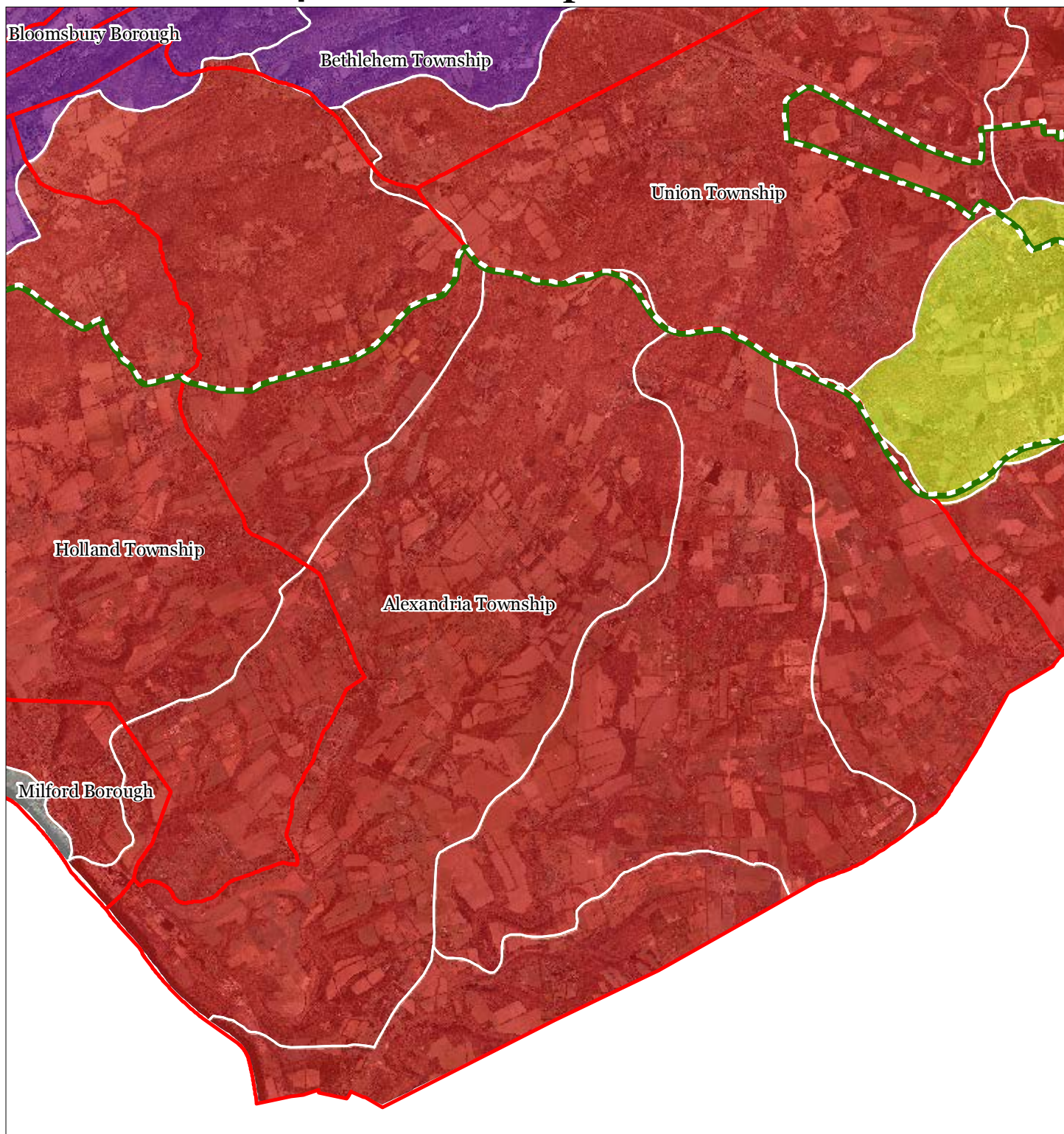
Alexandria Township



1 inch = 0.94 miles



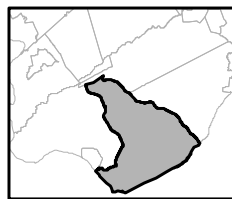
Exhibit T: HUC 14s on NJDEP Impaired Waters List



Impaired Waters Overall Assessment by HUC14 Subwatershed

- Non Impacted
- Insufficient Data Available
- Moderate
- Water Quality Impaired
- Preservation Area
- Municipal Boundaries

Alexandria Township

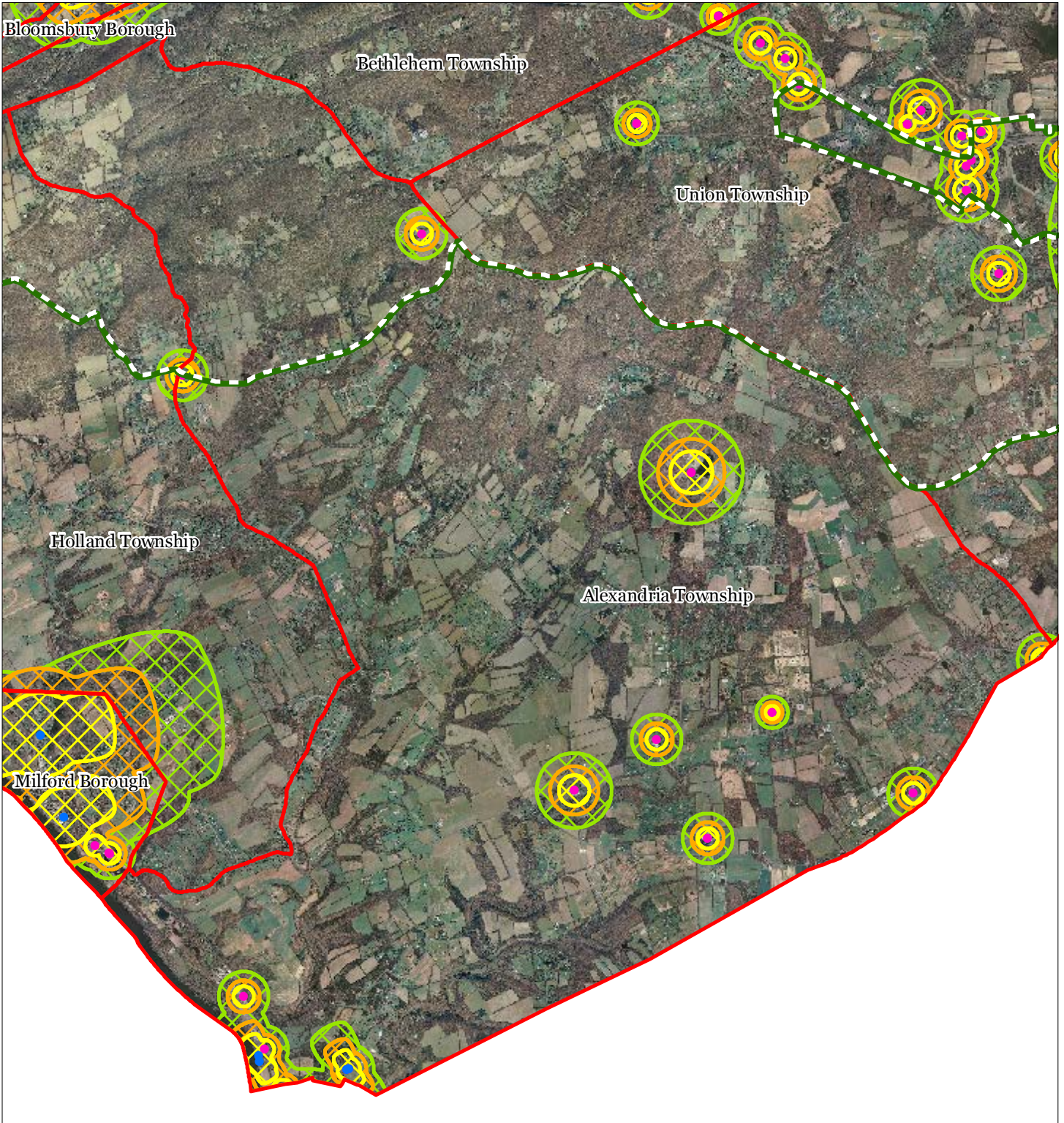


1 inch = 0.94 miles



February 2012

Exhibit U: Wellhead Protection Areas



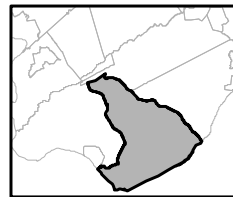
- Public Community Wells
- Public Non-Community Wells

Wellhead Protection Areas

- 2-Year Tier
- 5-Year Tier
- 12-Year Tier

- Preservation Area
- Municipal Boundaries

Alexandria Township



1 inch = 0.94 miles



Exhibit Y: Highlands Roadway Network



Roadway Network

Interstate Highways

U.S. Routes

State Routes

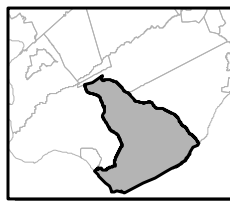
County Routes

Local Routes

Preservation Area

Municipal Boundaries

Alexandria Township

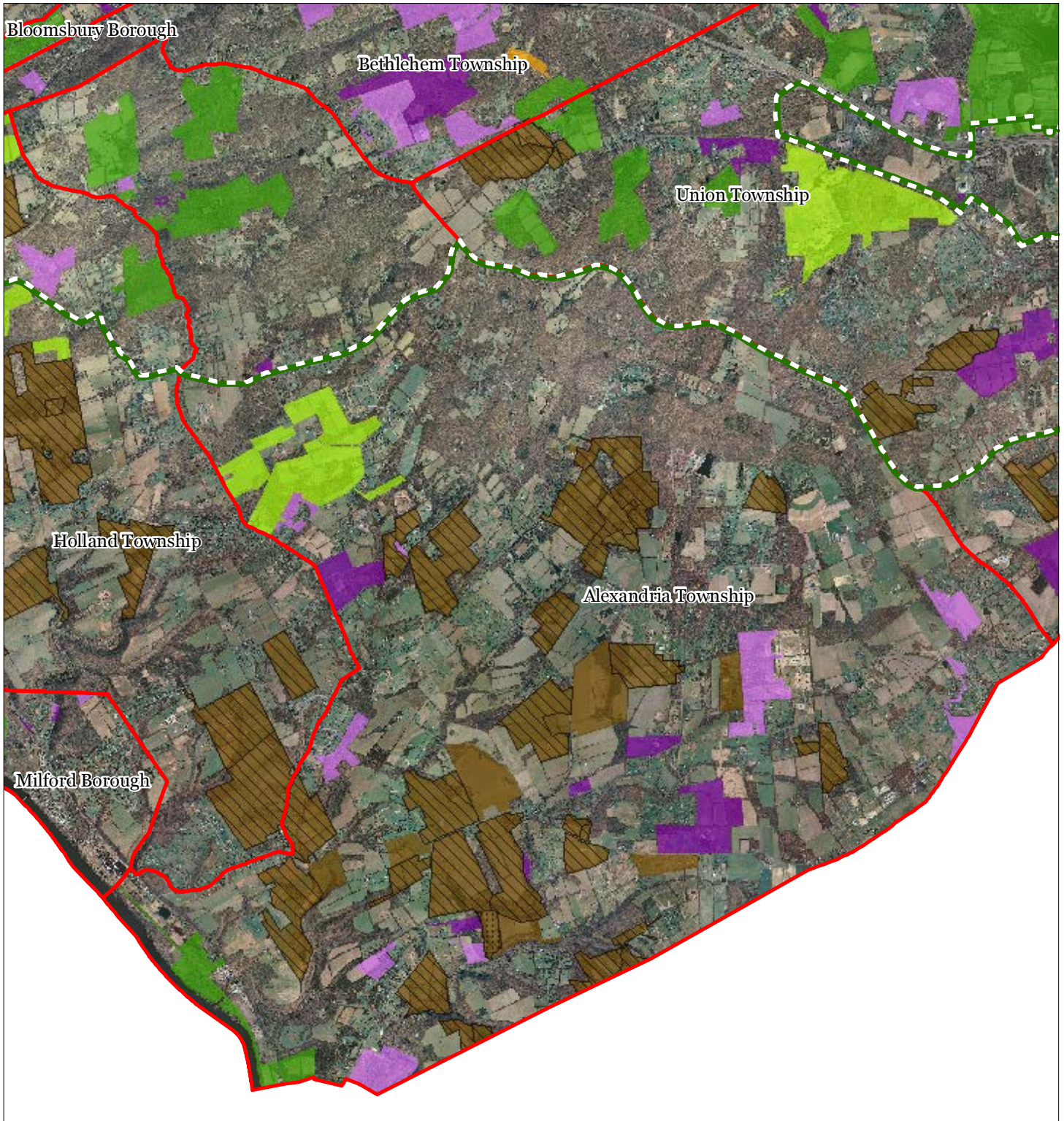


1 inch = 0.94 miles



February 2012

Exhibit AA: Preserved Lands



- | | |
|---|-------------------------------|
| Preserved Lands | Conservation Easements |
| Federal Open Space | Green Acres |
| State Open Space | SADC Easements |
| County Open Space | SADC Final |
| Municipal Open Space | SADC Preserved |
| Non-Profit/Private Open Space | Municipal Boundaries |
| Water Supply Watershed Lands | Preservation Area |
| Preserved Farmland | |
| Highlands Transfer of Development Lands | |

Alexandria Township

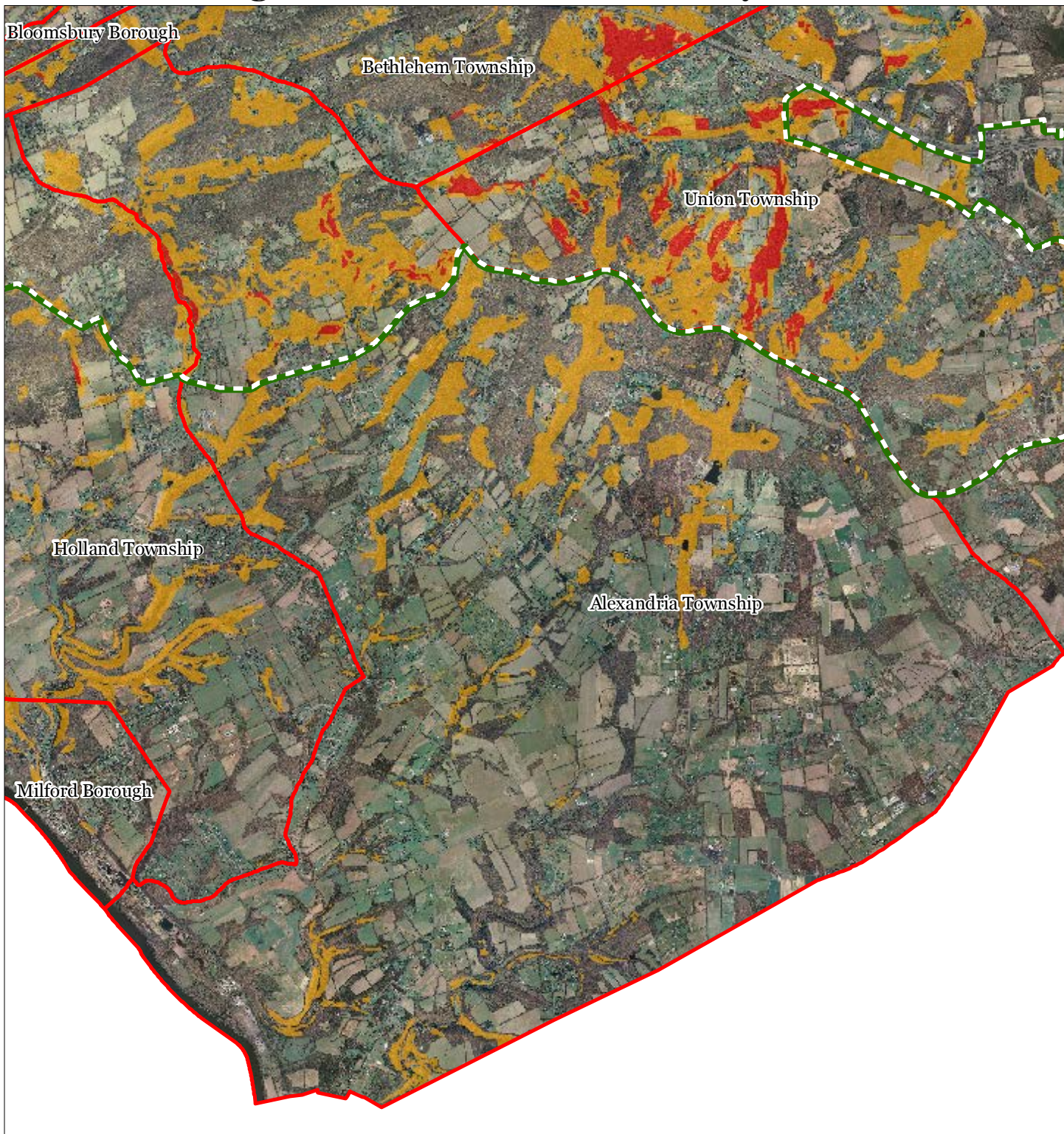


1 inch = 0.94 miles







February 2012

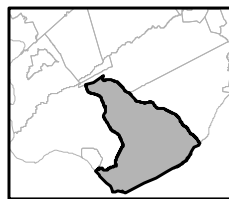
Exhibit BB: Highlands Conservation Priority Areas



Conservation Priority Area

-  Moderate
-  High
-  Preservation Area
-  Municipal Boundaries

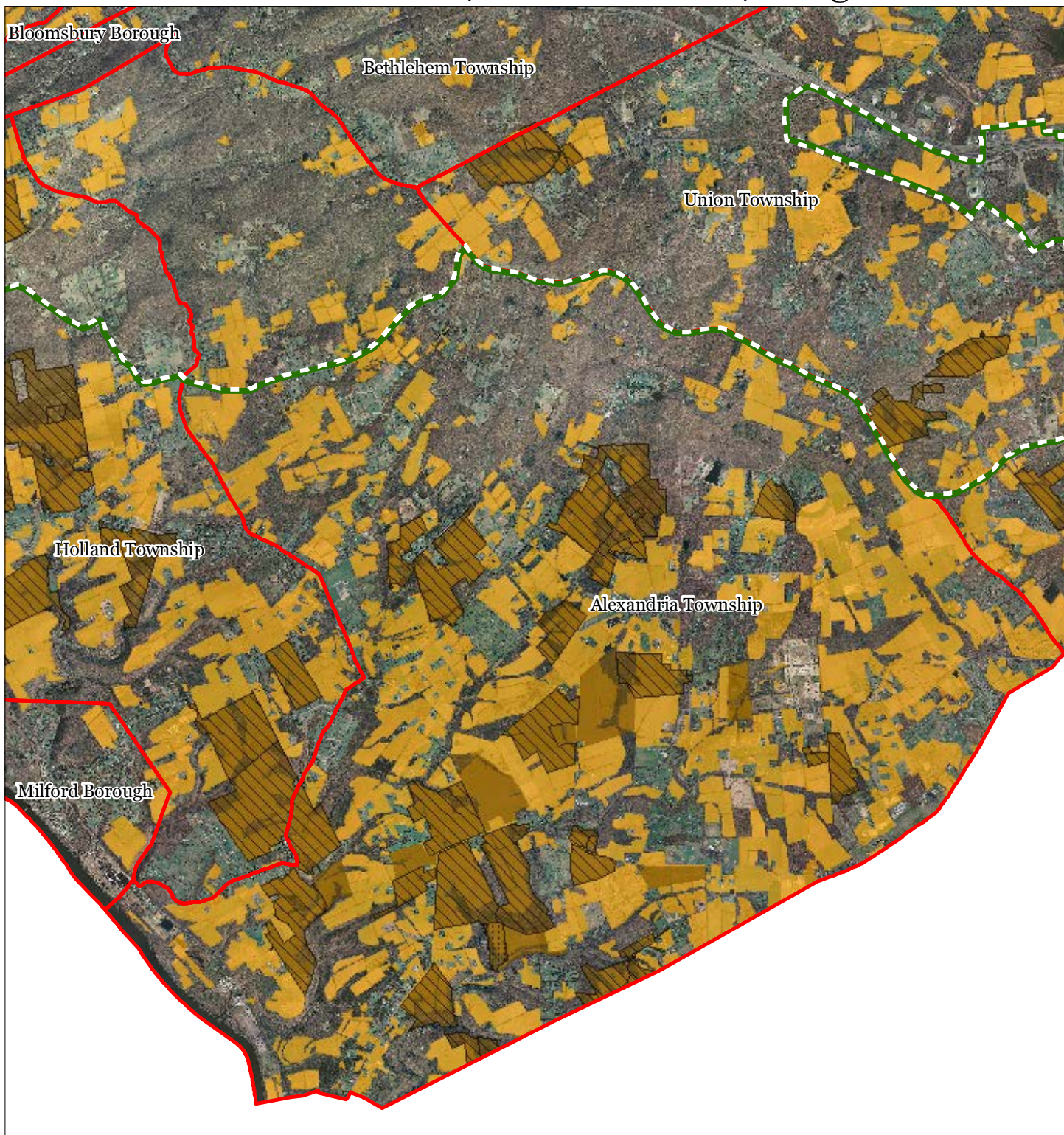
Alexandria Township



1 inch = 0.94 miles



Exhibit DD: Preserved Farms, SADC Easements, All Agricultural Uses



SADC Easements



SADC Final



Preservation Area



SADC Preserved



Municipal Boundaries

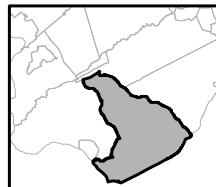
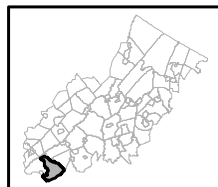


Preserved Farmland



Agriculture Uses

Alexandria Township



1 inch = 0.94 miles



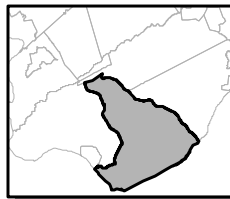
Exhibit EE: Important Farmland Soils



Important Farmland Soils

-  Prime Farmland
-  Farmland of Local Importance
-  Farmland of Statewide Importance
-  Farmland of Unique Importance
-  Preservation Area
-  Municipal Boundaries

Alexandria Township

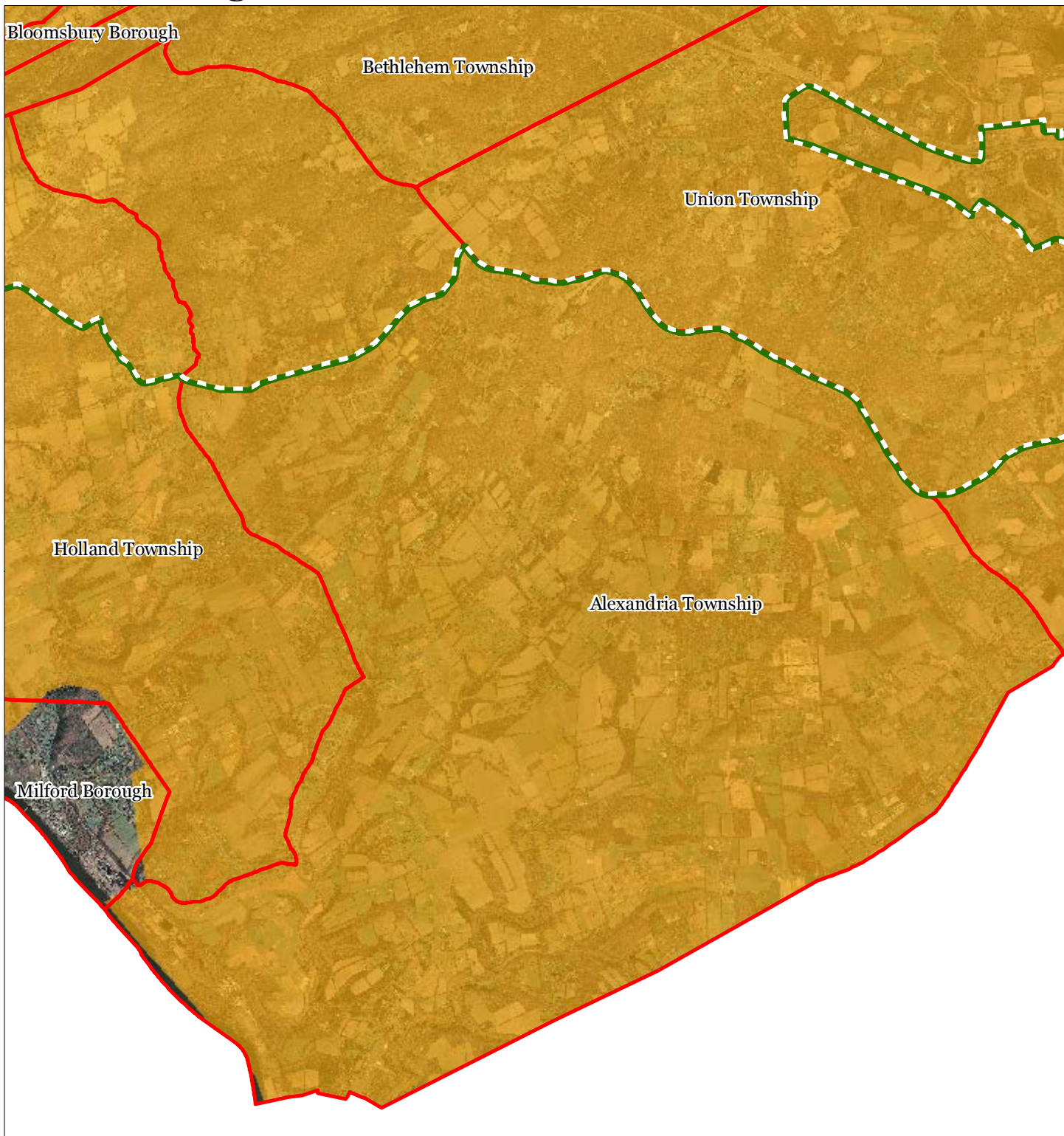





1 inch = 0.94 miles



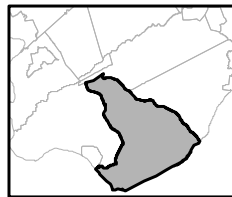
February 2012

Exhibit FF: Agricultural Resource Area



-  Agricultural Resource Area
-  Preservation Area
-  Municipal Boundaries

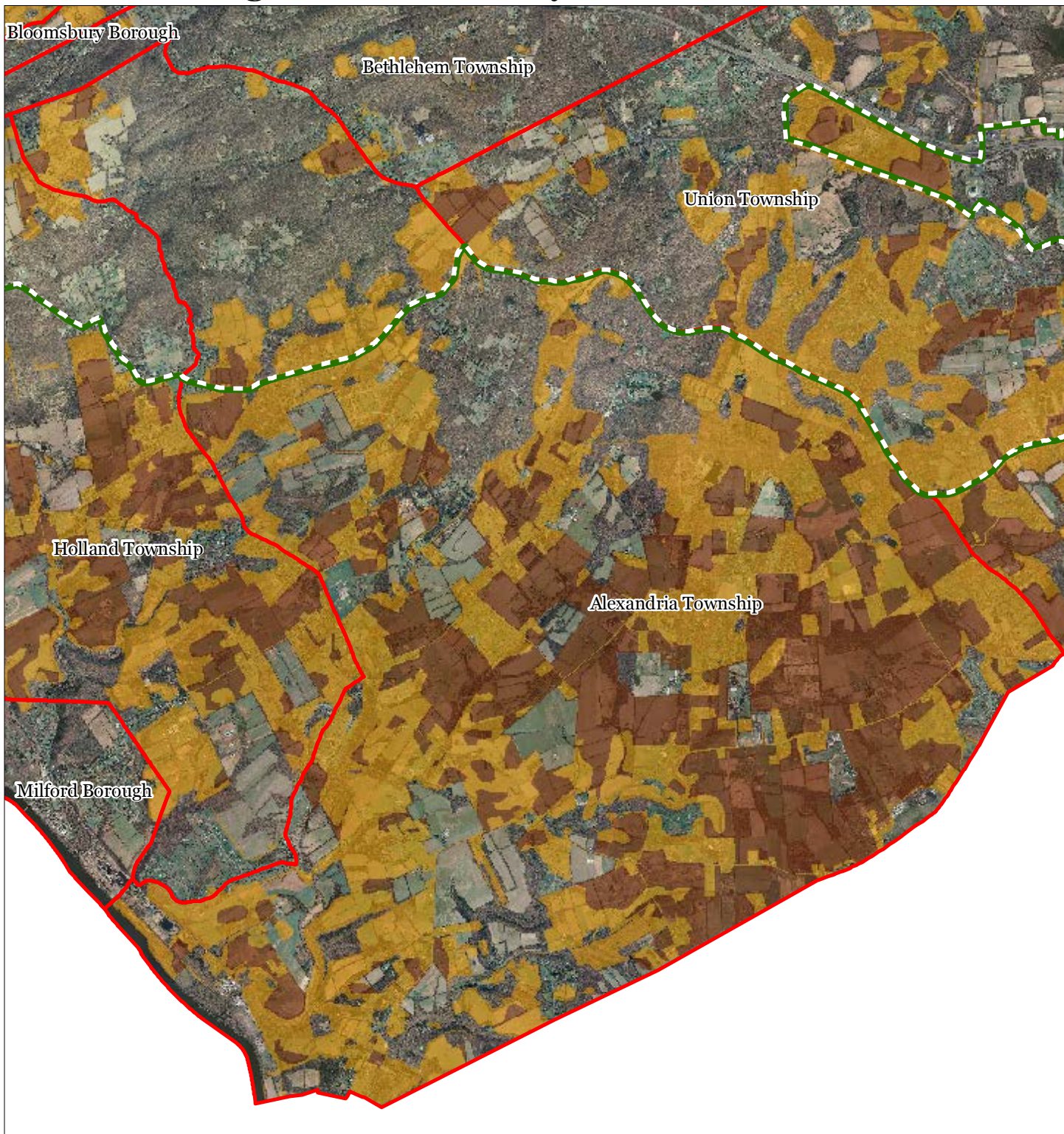
Alexandria Township







1 inch = 0.94 miles



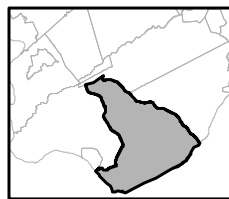
Exhibit GG: Agricultural Priority Area



Agricultural Priority Area

-  Moderate
-  High
-  Preservation Area
-  Municipal Boundaries

Alexandria Township

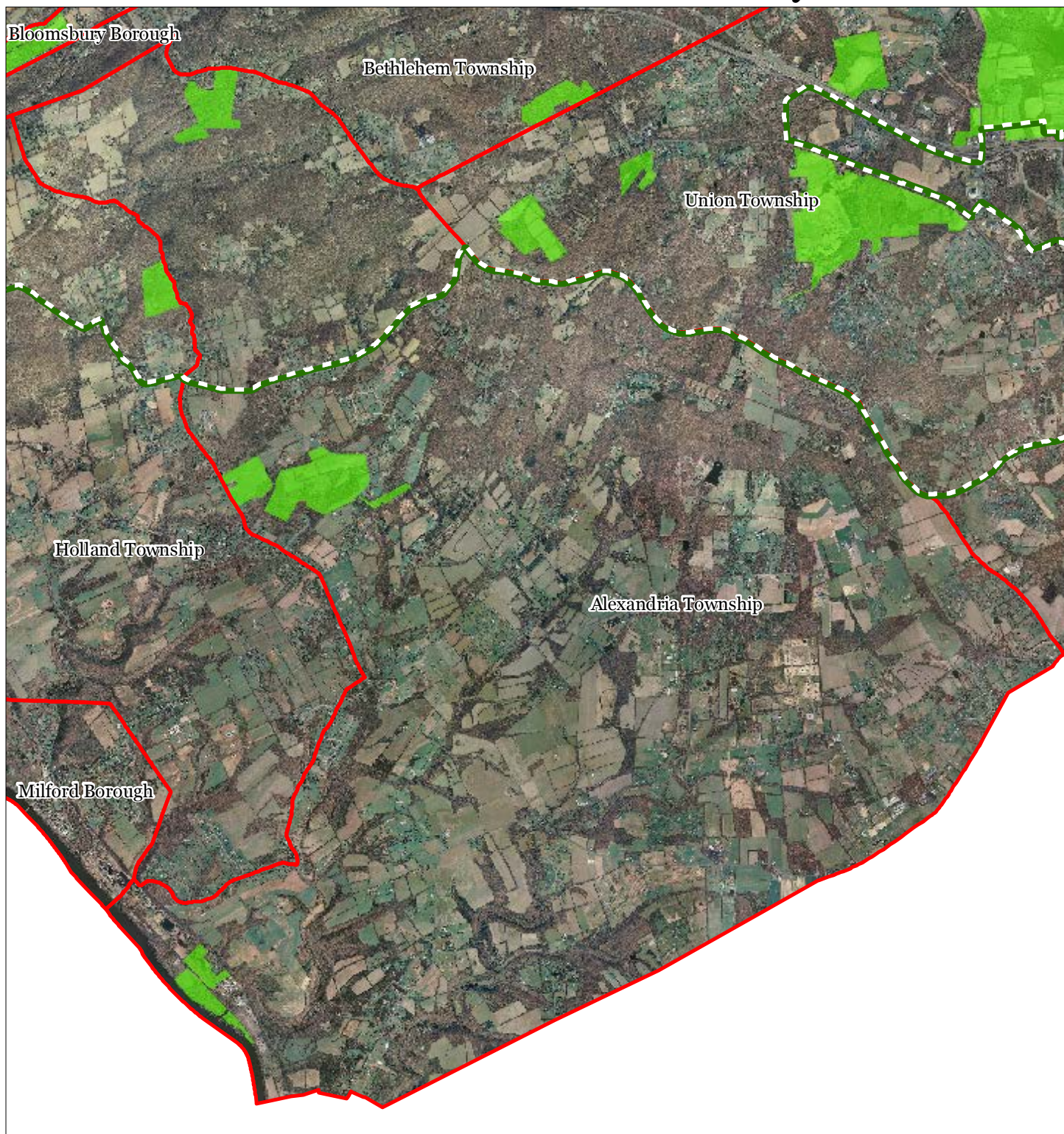





1 inch = 0.94 miles



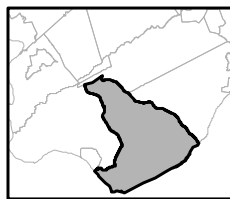
February 2012

Exhibit II: Baseline Scenic Resources Inventory



-  Scenic Resources
-  Municipal Boundaries
-  Preservation Area

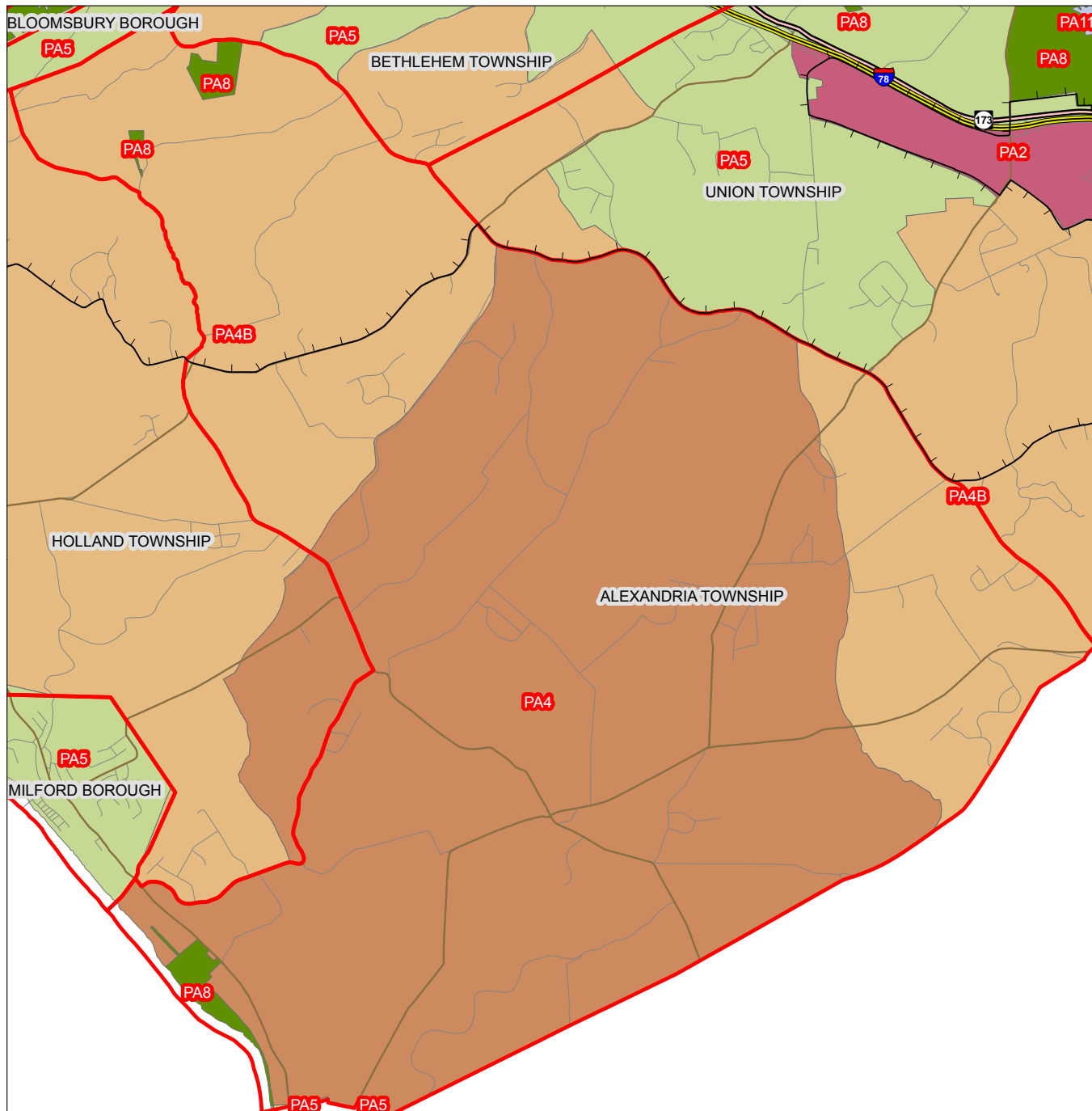
Alexandria Township



1 inch = 0.94 miles



Exhibit JJ - SDRP Planning Areas



Legend

- Preservation Area
- Municipal Boundaries
- Interstate Highways
- U.S. Routes
- State Routes
- County Routes
- Designated Centers*

State Planning Areas*

- METROPOLITAN (PA1)
- SUBURBAN (PA2)
- FRINGE (PA3)
- RURAL (PA4)
- RURAL ENVIRONMENTALLY SENSITIVE (PA42)

- ENVIRONMENTALLY SENSITIVE (PA5)
- PARK (PA6)
- FEDERAL PARK (PA7)
- STATE PARK (PA8)
- WATER (PA11)
- MILITARY (PA12)

* All designated centers expired as of 5/19/2010. Center designation may be redesignated by the State Planning Commission and the Highlands Council. State Planning Areas are from the State Development and Redevelopment Plan.

Figure

