



ALEXANDRIA TOWNSHIP

Hunterdon County, NJ



HIGHLANDS MASTER PLAN ELEMENT

Amending the

Alexandria Township Master Plan

Prepared by the New Jersey Highlands Water Protection and Planning Council in Support of the Highlands Regional Master Plan & the Alexandria Township Planning Board

HIGHLANDS PRESERVATION AREA ELEMENT

MASTER PLAN SUPPLEMENT TOWNSHIP OF ALEXANDRIA HUNTERDON COUNTY, NEW JERSEY

Alexandria Township Planning Board

Aram Papazian, Chairman

William Fritsche, Vice-Chairman

Paul Abraham, Mayor

Harry Swift, Township Committeeman

Michelle Garay

Michael Giannone

Peter Kluber

Phil Rochelle

Robert Runge

Judy Tucker


Jim Pauch

Steven P. Gruenberg, Board Attorney

Robert O'Brien, Board Engineer

The Planning Board presented, discussed, and accepted public comment on this draft Master Plan supplement at its duly-noticed public meeting of October 16, 2014. Copies of the document were made available for review by the public at least 10 days prior to that meeting, and adequate notice of the meeting advising that the Highlands Element was on the agenda for discussion, public comment, and adoption was provided in accordance with the Law.

This document is based on a model Highlands Preservation Area Element prepared by the Highlands Council and provided to Highlands municipalities. Modifications to the Highlands Council model document were prepared by the David J. Banisch, Planning Board Planner.


David Banisch, PP/AICP

10/24/14

Professional License No. 5565

TABLE OF CONTENTS

INTRODUCTION.....	1
POLICIES, GOALS & OBJECTIVES.....	3
A. PRESERVATION AREA GOALS	3
B. RELATIONSHIP BETWEEN HIGHLANDS ACT & MLUL.....	4
HOUSING PLAN	5
LAND PRESERVATION AND LAND STEWARDSHIP PLAN.....	6
AGRICULTURE RETENTION/FARMLAND PRESERVATION PLAN.....	9
COMMUNITY FACILITIES PLAN.....	12
SUSTAINABLE ECONOMIC DEVELOPMENT PLAN	13
HISTORIC PRESERVATION PLAN.....	14
A. HISTORIC, CULTURAL, AND ARCHAEOLOGICAL RESOURCES.....	14
B. SCENIC RESOURCES	15
RELATIONSHIP OF MASTER PLAN TO STATE/REGIONAL/LOCAL PLANS	17
EXHIBITS	19

INTRODUCTION

The Township of Alexandria is located in the New Jersey Highlands Region. It is one of 88 municipalities protected by and subject to the provisions of the Highlands Water Protection and Planning Act ("Highlands Act," N.J.S.A. 13:20-1 et seq.). The Highlands Act was enacted by the State Legislature on August 10, 2004. The Highlands Act created the Highlands Water Protection and Planning Council (the "Highlands Council") and charged it with crafting a comprehensive master plan for the Highlands Region.

The Highlands Regional Master Plan (RMP) was adopted by the Highlands Council on July 17, 2008, and became effective on September 8, 2008.

The Highlands Region encompasses some 1,343 square miles in the northwest part of New Jersey. The Highlands Act designates about half of the seven-county Region as Preservation Area (415,000 acres) and the other half as Planning Area (444,000 acres). The Act requires that jurisdictions having lands in the Preservation Area conform to the Highlands RMP with respect to that area, while for lands located in the Planning Area, conformance is voluntary.

The Township of Alexandria is located partially in each, the Preservation and Planning Area. The municipality affirmatively seeks to align its land use planning program with the provisions of the RMP with respect to that portion of the municipality located within the Preservation Area. For purposes of this document, these lands shall be formally designated as the "Township Highlands Preservation Area" with shortened references to the "Highlands Preservation Area" having the same meaning.

As a result of application of the "Highlands Water Protection and Planning Act Rules" (N.J.AC 7:38-1 et seq.), the Preservation Area in the Township of Alexandria has limited potential for development other than projects that would be exempt from the Highlands Act. Specifically, the Highlands Municipal Build-Out evaluation for Alexandria Township identified only one lot that could support non-exempt residential units, which is located in the Preservation Area. This lot will be regulated under the "Highlands Water Protection and Planning Act Rules" (N.J.AC 7:38-1 et seq.) and will therefore have very limited potential for development.

The Township Highlands Preservation Area Element sets forth the policies that shall guide future land use and development (to the extent applicable) within the Township Highlands Preservation Area. It provides the rationale and the framework for the adoption of land use requirements that are protective of Highlands resources and consistent with the Highlands RMP. In large part, these policies will be effectuated by adoption of a "Highlands Checklist Ordinance." This ordinance will require that applicants seeking development approvals for projects within the Township's Highlands Preservation Area to either provide confirmation of a Highlands Act exemption (pursuant to N.J.S.A. 13:20-28); or obtain evidence of RMP-compliance in the form of a Consistency Determination from the Highlands Council. The Township anticipates that most proposals for development will qualify for Highlands Act exemptions. Development not covered by such exemptions will, as applicable, be subject to the provisions of the Regional Master Plan, or in the Preservation Area, the Department of

TOWNSHIP OF ALEXANDRIA
HIGHLANDS PRESERVATION AREA MASTER PLAN HIGHLANDS ELEMENT

Environmental Protection (NJDEP) "Highlands Water Protection and Planning Act Rules" (N.J.AC 7:38-1 et seq), or both.

The Highlands Checklist Ordinance and any other regulatory requirement deemed necessary to effectuate these Highlands land use policies, shall apply to non-exempt land use activities in the Township Highlands Preservation Area. "Non-exempt" land use and development refers to uses, activities, and development projects not expressly listed as exemptions in the Highlands Act (N.J.S.A. 13:20-28). Land use activities, improvements, and development projects that are exempt from the Highlands Act shall remain subject to all other applicable provisions of the underlying municipal Master Plan, Zoning and Land Use Ordinances, and Development Regulations.

The Township Highlands Preservation Area Element amends or creates in limited form (where not already existing), the components needed to supplement the existing Alexandria Township Master Plan, as required for Plan Conformance in the Township Highlands Preservation Area. The Township Highlands Preservation Area Element is intended to apply in conjunction with the language of the existing Township Master Plan to the maximum extent feasible. In the event of conflicts between the two, the Township Highlands Preservation Area Element shall supersede, unless the existing municipal Master Plan provisions are more restrictive.

POLICIES, GOALS & OBJECTIVES

The Township Highlands Preservation Area is located in the northern portion of the municipality. It consists of approximately 2,721 acres of land (see Exhibit A, Township Highlands Preservation Area) which represents approximately 15% of the Township's total of 17,760 acres.

The Township Highlands Environmental Resource Inventory (ERI) (prepared by the Alexandria Township Planning Board with the assistance of Banisch Associates, Inc., adopted October 16, 2014) provides detailed information concerning the physical features, natural resources and specific characteristics of the Highlands Preservation Area. The ERI includes all of the information available through the Highlands Regional Master Plan and supporting technical documents, which document the wide array of natural and cultural resources that characterize the New Jersey Highlands Region.

The municipality recognizes the unique value of the Township Highlands Preservation Area and seeks to protect and enhance it, in keeping with the Highlands Act and the Highlands RMP. Accordingly, the overarching land use policy with respect to the Township Highlands Preservation Area is to place priority emphasis on the protection, enhancement and restoration of Highlands natural and cultural resources while ensuring that land use and development activities therein occur only in a manner and location that is consistent with the Highlands RMP.

In keeping with this policy, the following goals of the Highlands Act and Highlands RMP are embraced by the municipality and shall guide the land use and development of the Township Highlands Preservation Area:

A. PRESERVATION AREA GOALS

1. To protect, restore, and enhance the quality and quantity of surface and ground waters;
2. To preserve extensive and, to the maximum extent possible, contiguous areas of land in its natural state, thereby ensuring retention of the unique and significant natural, scenic, and other resources representative of the Township Highlands Preservation Area;
3. To protect the natural, scenic, and other resources of the Township Highlands Preservation Area, including but not limited to contiguous forests, wetlands, vegetated stream corridors, steep slopes, and critical habitat for fauna and flora;
4. To preserve farmland, historic sites, and other historic resources;
5. To preserve outdoor recreation opportunities on publicly owned land;
6. To promote conservation of water resources;

7. To promote Brownfield remediation and redevelopment, where applicable;
8. To promote compatible agricultural, horticultural, recreational, and cultural uses and opportunities within the framework of protecting the environment of the Township Highlands Preservation Area; and
9. To prohibit or limit to the maximum extent possible construction or development which is incompatible with preservation of this unique area.

B. RELATIONSHIP BETWEEN HIGHLANDS ACT & MLUL

The Municipal Land Use Law gives authority to New Jersey municipalities to govern land use and development within their borders. The Highlands Act augments that authority to allow municipalities the power to enforce the goals, policies, objectives, and programs of the Highlands Regional Master Plan. The Highlands Act and the RMP together provide the regional perspective from which local decisions and actions will emanate.

As a result of the passage of the Highlands Act, the future of land use planning has significantly changed for both municipalities and counties in the Highlands Region. The New Jersey Supreme Court, in upholding the constitutionality of the Highlands Act in OFF, LLC v. State, 197 N.J. 418 (2008), affirmed the Appellate Division's decision, which emphasized the broad scope of the Highlands Act to protect the natural and agricultural resources of the Highlands through a coordinated system of regional land use controls. The Highlands Act creates a system in which a regional plan is designed to be implemented primarily through local government units. The net effect is that the statutory authority of local government units in the Highlands Region, inclusive of that provided under the Municipal Land Use Law (MLUL), is not preempted by the Highlands Act, but rather is supplemented through the passage of the Highlands Act and the adoption of the Highlands Regional Master Plan. The Highlands Act provides, through the conformance of municipal master plans and ordinances with the Highlands RMP, authorities for municipal regulation that are in addition to those of the MLUL.

Accordingly, the criteria for approval of development applications under the ordinances that ultimately effectuate this Highlands Element will incorporate aspects of both the Municipal Land Use Law and the Highlands Act.

The Highlands Council will coordinate with NJDEP during Highlands permit review for any major Highlands development including the review of waivers on a case-by-case basis: 1) if determined to be necessary in order to protect public health and safety; 2) for redevelopment in accordance with a Highlands Redevelopment Area Designation or 3) in order to avoid the taking of property without just compensation.

HOUSING PLAN

The Alexandria Township Land Use Board adopted a Third Round Housing Element and Fair Share Plan (prepared by Banisch Associates, Inc.) on May 27, 2010. The document was endorsed by the Township Committee and submitted to the Council on Affordable Housing with a re-petition for substantive certification on December 29, 2010. As adopted, the Housing Element contains all goals and objectives regarding housing within the community, as required for consistency with the Highlands Regional Master Plan.

LAND PRESERVATION AND LAND STEWARDSHIP PLAN

The 2001 Master Plan has a Recreation Plan Element. The 2004 Reexamination Report recommends adopting an Open Space element of the Recreation Plan providing detailed information on existing and proposed open space preservation and recreational opportunities in the community. This Plan supplements the existing Recreation Plan Element, as applicable to the Township Highlands Preservation Area, to include the additional information and goals and objectives listed below. It is also the intent of the Planning Board to fully develop and adopt an Open Space Plan Element, applicable at minimum to the Highlands Preservation Area. Until such time as that task is complete, the narrative herein shall serve as the Land Preservation & Land Stewardship Plan Element.

A mapped inventory of Preserved Lands in the Township Highlands Preservation Area, current through August 2013, appears at Exhibit B, "Preserved Lands. This Plan in addition incorporates Exhibit C, "Highlands Conservation Priority Areas," and Exhibit F, "Highlands Agricultural Priority Area." This Plan recognizes and incorporates the definitions, derivations and delineations used to develop these maps, as provided in the ERI.

Preserved Lands in the Township Highlands Preservation Area include lands under ownership by the municipality and the state. In addition, Preserved Lands includes dedicated easements (such as Conservation Easements) to the extent these are currently known and identified (i.e., by deed description) for mapping purposes. (The Planning Board recognizes and will address the need for a more complete inventory of all such easements after Plan Conformance has been attained, with the assistance of the Highlands Council.) In total, the maps indicate 411 acres of Preserved Lands in the Township Highlands Preservation Area. Approximately 0% is currently used for active recreational purposes, % constitutes preserved farmland, and 100% is set aside for other preservation purposes, including passive recreational uses.

Highlands Conservation Priority Area lands are those designated a high priority for preservation due to exceptional water and ecological resource value. The priority order derives from the Highlands Council Resource Assessment methodology, which identifies and ranks Highlands lands based on a combination of indicators, including but not limited to: watershed conditions, Highlands Open Waters, riparian areas, prime ground water recharge areas, forests, critical habitat and steep slopes.

The Highlands Agricultural Priority Area, lastly, consists of those lands determined by the Highlands Council, in coordination with the NJDA and the State Agriculture Development Committee (SADC), based on an agricultural resource assessment, to have the highest agricultural resource values.

The following goals and objectives will guide the future identification, prioritization, dedication, and stewardship of Preserved Lands in the Township Highlands Preservation Area:

TOWNSHIP OF ALEXANDRIA
HIGHLANDS PRESERVATION AREA MASTER PLAN HIGHLANDS ELEMENT

1. To recognize and consider Highlands Council prioritization criteria in addition to existing Township criteria, in making determinations regarding non-agricultural Land Preservation (whether by fee simple or easement dedication). Highlands priorities are ordered as follows:
 - a. Lands within Highlands Conservation Priority Areas; and
 - b. Lands within Highlands Resource Areas generally, including but not limited to forested portions of Forest Resource Areas, Critical Habitat Areas, and Riparian Areas, particularly any portion of a Resource Area designated as "High Integrity" or "High Resource Value."
2. To maintain a current Recreation and Open Space Inventory (ROSI) where required by the NJDEP Green Acres Program.
3. To seek ways to establish and fund local land acquisition for preservation and stewardship programs or to expand existing open space and stewardship programs.
4. To identify lands subject to stewardship programs within this Land Preservation and Land Stewardship Plan and to provide that information to the Highlands Council.
5. To require that conservation or land stewardship easements imposed during the course of development applications be enforceable by the Highlands Council and at least one of the following entities, as qualified and amenable in accordance with the particular circumstances: the Township, the County Agriculture Development Board, the SADC, Green Acres, or a non-profit land trust organized pursuant to § 501 (c)(3) of the federal tax code and engaged in the protection of land for the purpose of providing long-term stewardship of land resources.
6. To establish a stewardship and monitoring program for preserved lands owned by or dedicated to the Township. This objective may be accomplished with the assistance of a non-profit land trust organized pursuant to § 501 (c)(3) of the federal tax code and engaged in the protection of land for the purpose of providing long-term stewardship of land resources.
7. To develop and implement a Forest Management Plan or Forest Stewardship Plan consistent with the standards of the NJ Forest Stewardship Program for application to municipally-owned forest lands.
8. To ensure periodic monitoring of easement restrictions protecting Critical Habitat Areas, associated species and ecological communities from any changes in land use or management practices that would impair these resources.
9. To implement Riparian Area restoration practices on Preserved Lands that give priority to ecological and watershed protection measures.

TOWNSHIP OF ALEXANDRIA
HIGHLANDS PRESERVATION AREA MASTER PLAN HIGHLANDS ELEMENT

10. To identify and preserve opportunities for outdoor recreation, including a variety of active and passive recreation options, in such locations and in such manner as to ensure environmental resource protections, while addressing the needs of the local population for physical activity, social interaction, connection with nature and the natural environment, and enjoyment of the outdoors.

AGRICULTURE RETENTION/FARMLAND PRESERVATION PLAN

The existing Master Plan has an Agriculture Retention/Farmland Preservation Plan Element providing detailed information on existing and proposed farmland preservation priorities in the community. This Plan supplements the existing Element, as applicable to the Township Highlands Preservation Area, to include the additional information and goals and objectives listed below

A mapped inventory of Preserved Farmland in the Township Highlands Preservation Area, current through August, 2013, appears at Exhibit D, "Preserved Farms, SADC Easements, All Agricultural Uses" (duplicated from the ERI). In addition, this Plan incorporates Exhibit E, "Important Farmland Soils" (also duplicated from the ERI), Exhibit F, "Agricultural Resource Area," and Exhibit G, "Highlands Agricultural Priority Area." This Plan recognizes and incorporates the definitions, derivations, and delineations used to develop these maps, as provided in the ERI and in all background technical data which derive from: the NJDA, the SADC, the NJDEP, and the Natural Resources Conservation Service (NRCS), the Highlands RMP and Highlands Council *Sustainable Agriculture Technical Report*.

Preserved Farmland includes farms that are preserved through the SADC Farmland Preservation Program, farms that have final approval from the SADC, and farms under the SADC eight-year easement program. "*All Agricultural Uses*" includes lands currently serving farming and/or other agricultural purposes, whether permanently deed restricted or not. The map of "*Important Farmland Soils*" provides a delineation of the farmland soil classifications as prepared by the U.S. Department of Agriculture (USDA), NRCS, Soil Survey Geographic Database for farmland soil quality, including:

- a) Prime Farmland Soils - Soils having the best combination of physical and chemical characteristics for producing food, feed, forage, fiber and oilseed crops. It has the soil quality, growing season, and moisture supply needed to produce high yields of crops when treated and managed according to acceptable farming methods. Prime farmland soils are not excessively erodible or saturated with water for a long period of time, and they either do not flood frequently or are protected from flooding.
- b) Soils of Statewide Importance – Soils that produce high yields of crops when treated and managed according to acceptable farming methods. This soil may support yields as high as Prime farmland if conditions are favorable.

The Agricultural Resource Area (ARA) consists of those areas of most concentrated and contiguous agricultural uses in the Township Highlands Preservation Area, using Important Farmland Soils as a critical factor in the delineation. Highlands Agricultural Priority Areas, lastly, are those determined by the Highlands Council, in coordination with the NJDA and SADC, based on an agricultural resource assessment, to have the highest agricultural resource values.

TOWNSHIP OF ALEXANDRIA
HIGHLANDS PRESERVATION AREA MASTER PLAN HIGHLANDS ELEMENT

The overriding policy of this Plan is to ensure the long-term sustainability of agricultural resources and the viability of agriculture as a business in the Township Highlands Preservation Area. Achieving this aim requires maintenance of a healthy agricultural environment with a sufficient agricultural land base. Accordingly, the below-listed goals and objectives will guide the future land use and management of the Township Agricultural Resource Area within the Township Highlands Preservation Area.

1. To promote farmland preservation and limit non-agricultural uses within the Agricultural Resource Areas.
2. To recognize and consider Highlands Council prioritization criteria in addition to existing Township criteria, in making determinations regarding Agricultural Land Preservation (whether by fee simple, easement dedication, transfer of development rights, or other agricultural land conservation techniques). Highlands priorities are ordered as follows:
 - a. Farmland designated as Agricultural Priority Area, as defined in the Agriculture Retention/Farmland Preservation Plan Element and delineated in Exhibit G; and
 - b. Farmland located within an Agricultural Resource Area, as defined in the Agriculture Retention/Farmland Preservation Plan Element and delineated in Exhibit F.
3. To limit non-agricultural uses within the Agricultural Resource Area to the extent feasible, to those designed to support the preservation of farmland, avoid conflicts with agriculture, maintain and enhance the sustainability and continued viability of the agricultural industry, protect Important Farmland Soils, and meet the resource management and protection requirements of the Conservation Plan Element.
4. To require that, where preservation of agricultural lands within the Agricultural Resource Area is not feasible, any residential development be permitted only under conservation design parameters, such as cluster development.
 - a. To require that cluster or conservation design development within the Agricultural Resource Area support the preservation of farmland, avoid conflicts with agriculture, maintain and enhance the sustainability and continued viability of the agricultural industry, protect Important Farmland Soils, and meet resource management and protection requirements of the Conservation Plan Element.
 - b. To require that all cluster or conservation design development within the Agricultural Resource Area be buffered appropriately to avoid conflicts between non-agricultural development and agricultural activities, and to protect existing agricultural uses and sensitive environmental resources.
 - c. To require that all land preserved in perpetuity for agricultural purposes as a result of clustering be subject to a conservation easement enforceable by

TOWNSHIP OF ALEXANDRIA
HIGHLANDS PRESERVATION AREA MASTER PLAN HIGHLANDS ELEMENT

the Highlands Council and at least one of the following: the municipality, the County Agriculture Development Board or the SADC.

- d. To permit retention of the original farmstead or construction of new farmsteads associated with preserved agricultural lands in cluster developments, wherever feasible.
 - e. To require implementation of best management practices, including development and implementation of a Farm Conservation Plan that addresses the protection of water and soil resources prepared by the USDA NRCS, Technical Service Provider (TSP), appropriate agent or NJDA staff, and approved by the local Soil Conservation District (SCD).
5. To permit family and farm labor housing in the Agricultural Resource Area as appropriate, to support the viability of permitted agricultural operations, subject to compliance with the resource management and protection requirements of the remainder of the Township Highlands Preservation Area Element.
 6. To promote the Right to Farm Act and to incorporate land use regulations that are consistent with and further its intents and purposes.
 7. To protect and enhance surface and ground water quality and natural resources within the ARA by promoting the use of Best Management Practices including the use of USDA NRCS and Farm Service Agency cost-share programs.
 8. To promote the long-term viability of the local agricultural industry by promoting and utilizing existing county, state, and federal agriculture related programs and developing land use regulations and programs where appropriate, in support of direct marketing, organic farming, niche markets, agri-tourism initiatives such as farmers' markets and roadside stands (located on or off the site of an active farm), ancillary business opportunities, community supported agriculture, and other such projects, programs, or activities.

COMMUNITY FACILITIES PLAN

The existing Community Facilities Plan Element of the Master Plan requires updates to identify detailed information on all existing community facilities needs, including but not limited to government offices, fire, police, and rescue squad facilities, parks and playgrounds, educational facilities, libraries, public works facilities and yards, treatment works, storage depots, and so forth. This Plan supplements the existing Element, as applicable to the Township Highlands Preservation Area, to include the additional goals and objectives that are listed below.

The overriding policy of this Plan is to ensure that community facilities reflect community needs while minimizing resource impacts and maximizing the efficiency of resource use. Achieving this aim requires attention to the design and location of community facilities. Accordingly, the below-listed goals and objectives will guide community facilities in the Township Highlands Preservation Area.

1. To locate and maintain community facilities and services that support compact development patterns and shared services, and provide a high level of service.
2. To identify existing and planned community facilities and to encourage shared service opportunities, whether at intra- or inter-municipal levels.
3. To identify for all such facilities, realistic options to enhance energy efficiencies, incorporate "green" building materials and technologies, reduce pollutant emissions, and minimize "carbon footprints;" and to develop a community strategy for implementing them.
4. To consider and incorporate all feasible Low Impact Development techniques in the design, development, operation and management of existing and proposed community facilities.
5. To incorporate the goals, objectives and resource protections discussed throughout this Highlands Element into the planning and development of properties and facilities under municipal jurisdiction.

SUSTAINABLE ECONOMIC DEVELOPMENT PLAN

A sustainable economy is important to the well-being of the Township and the wider economic region of which it is a part. It is the intent of the Planning Board to examine this issue and to prepare an economic development plan for future adoption, which will set forth strategies for strengthening the local economy and/or the municipal contribution toward the wider economy to which it belongs.

The goals and objectives of the Sustainable Economic Development Plan in addition include, but are not limited to:

1. To develop appropriate strategies to improve the local tax base and create jobs and economic opportunities, while remaining consistent with the other policies and objectives of the Highlands Element.
2. To ensure opportunities for home office, entrepreneurial and other small business activities, as appropriate.
3. To identify appropriate opportunities for development and/or redevelopment, including possible brownfield redevelopment that may further the goal of economic sustainability.
4. To encourage development of small business incubator programs, particularly those focused on advancing specific goals and objectives of the Highlands Element, such as initiatives in compact design, native species landscaping, Low Impact Development, energy efficiency and resource conservation.
5. To coordinate with the Highlands Council and other applicable state and/or county agencies to develop or participate in eco-, agri-, and/or heritage tourism programs, as appropriate.

HISTORIC PRESERVATION PLAN

The existing Master Plan has an Historic Preservation Plan Element setting forth the applicable goals and objectives, criteria for historic designation, and specific properties of historic interest in the community. This Plan supplements the existing Element, as applicable to the Township Highlands Preservation Area, to include the additional information and goals and objectives listed below.

A. HISTORIC, CULTURAL, AND ARCHAEOLOGICAL RESOURCES

The Township survey of historic sites appears as a figure within the Environmental Resources Inventory which is duplicated here at Exhibit H "Historic Cultural and Archaeological Resources Inventory." The list comes directly from the Highlands Region Historic, Cultural, and Archaeological Resources Inventory (updated as of June 2011), which includes: 1) all properties listed on the State or National Register of Historic Places; 2) all properties which have been deemed eligible for listing on the State or National Register; and 3) all properties for which a formal State Historic Preservation Office (SHPO) opinion has been issued.

This Plan recognizes that the historic, cultural and archaeological resources of the Township Highlands Preservation Area form an essential component of its character and aesthetic quality. They preserve a part of the history of the Township Highlands Preservation Area and provide a link to its past. They remind us of significant people, places and events in our history and they provide vital information about what life was like in this community in earlier times.

Accordingly, the below-listed goals and objectives shall apply to the Historic, Cultural, and Archaeological resources in the Township Highlands Preservation Area.

1. To examine the character and qualities of the community's Historic, Cultural, and Archaeological resources to gain further understanding of the extent of their contributions to the aesthetics, character, economic vitality, and sense of place of the community.
2. To consider the educational value of the community's Historic, Cultural, and Archaeological resources and encourage opportunities to celebrate and share information about the community's heritage.
3. To consider the character and qualities of the community's Historic, Cultural, and Archaeological resources in any development application that may affect them, whether directly or indirectly.
4. To examine the potential for development and adoption of regulatory provisions that are protective of the Historic, Cultural, and Archaeological resources of the community.

5. To consider the character and qualities of the community's Historic, Cultural, and Archaeological resources in development of the Land Use Plan, Community Facilities Plan, Circulation Plan, and all other aspects of the Highlands Element.

The following sites, districts and properties are listed in the Highlands Historic, Cultural, and Archaeological Resources Inventory, for the Township Highlands Preservation Area:

- a) Little York Historic District (ID#1559) - County Route 614 and Sweet Hollow Road;
- b) Little York Historic District Addendum (ID#4213);

B. SCENIC RESOURCES

The Township baseline survey of scenic resources appears at Exhibit I "Baseline Scenic Resources Inventory," duplicated from the ERI. The specific list of affected properties is provided below. The list comes directly from the Highlands Council as a first-step inventory of Scenic Resources having potential for local and/or regional designation. It includes national historic landmarks and federal, state and county publicly-owned parks, forests, and recreation areas.

The Highlands Council also adopted a Procedure for Nomination, Evaluation and Inventory of Highlands Regionally Significant Scenic Resources which establishes the process for formal nomination and inclusion of additional scenic resources in the Highlands Scenic Resource Inventory. The process requires the adoption and implementation of management plans to ensure that the scenic resources are protected and maintained.

This Plan recognizes the value and importance of scenic resources in preserving the aesthetic qualities of the Township Highlands Preservation Area. Accordingly, the below-listed goals and objectives shall apply to the future management of Scenic Resources in the Township Highlands Preservation Area.

1. To ensure that human development does not adversely affect the character or value of resources which are listed on the Highlands Scenic Resources Inventory.
2. To require that the impact of proposed human development on the scenic resources of the Highlands Preservation Area be addressed during local development review.
3. To utilize Highlands Scenic Resource designation standards, as applied at the local level, in considering scenic resources for designation.
4. To require that all development applications include identification of any scenic resources in the Highlands Region that are listed on the Highlands Scenic Resources Inventory and may be affected by the proposed development.
5. To develop regulatory standards to protect Scenic Resources from negative impacts due to development.

TOWNSHIP OF ALEXANDRIA
HIGHLANDS PRESERVATION AREA MASTER PLAN HIGHLANDS ELEMENT

6. To develop minimum standards for the protection and enhancement of the Scenic Resources listed in the Highlands Scenic Resources Inventory.

Sweet Hollow Preserve is the only location listed in the Highlands Scenic Resources Inventory in the Township Highlands Preservation Area

RELATIONSHIP OF MASTER PLAN TO STATE/REGIONAL/LOCAL PLANS

By adoption of this Highlands Element, the Township Master Plan is brought into alignment with the Highlands Regional Master Plan (RMP). The Highlands Element incorporates all of the policies, goals, and objectives of the Highlands RMP that are relevant to the use and development of land in the Township Highlands Preservation Area. The Highlands Element calls for the development and adoption of various land use regulations and specific environmental management plans, which together will effectuate its vision and in so doing, advance the intents and purposes of the Highlands RMP.

The Highlands Act provides that any portion of a municipality located in the Township Highlands Preservation Area is exempt from the State Planning Commission (SPC) Plan Endorsement process.

By aligning the municipal Master Plan with the Highlands RMP, its consistency with the State Development and Redevelopment Plan (SDRP) is achieved. A map depicting the municipality's SDRP Planning Areas appears at Exhibit J. The Township Highlands Preservation Area Element furthers SDRP policies, goals, and objectives in many ways, not least of which are the following:

1. Seeking to protect, preserve, restore, and enhance the natural resources of the Highlands Preservation Area;
2. Encouraging the use of smart growth principles in locations of the Area deemed appropriate for development and/or redevelopment;
3. Protecting historic, cultural and aesthetic resources;
4. Encouraging a sustainable local economy;
5. Protecting agricultural resources, supporting local agricultural businesses, and promoting sustainable agricultural practices;
6. Preserving open space and providing for an array of active and passive recreational opportunities; and
7. Ensuring a viable and well-integrated transportation network that incorporates and encourages multi-modal options and efficiency of land use.

The Township Highlands Preservation Area Element modifies the relationship of the Township development plan to those of the county and contiguous municipalities insofar as it affects the intents for land use and development within the Township Highlands Preservation Area. Given that the Township Highlands Preservation Area Element introduces a substantial number of new constraints to development based on environmental resources and carrying capacities, it is anticipated that the future impacts from development of the Township Highlands Preservation Area will be reduced from previous trends. A complete understanding will not exist however, until further analysis is undertaken to determine the full impacts of conformance with the RMP on the municipal

TOWNSHIP OF ALEXANDRIA
HIGHLANDS PRESERVATION AREA MASTER PLAN HIGHLANDS ELEMENT

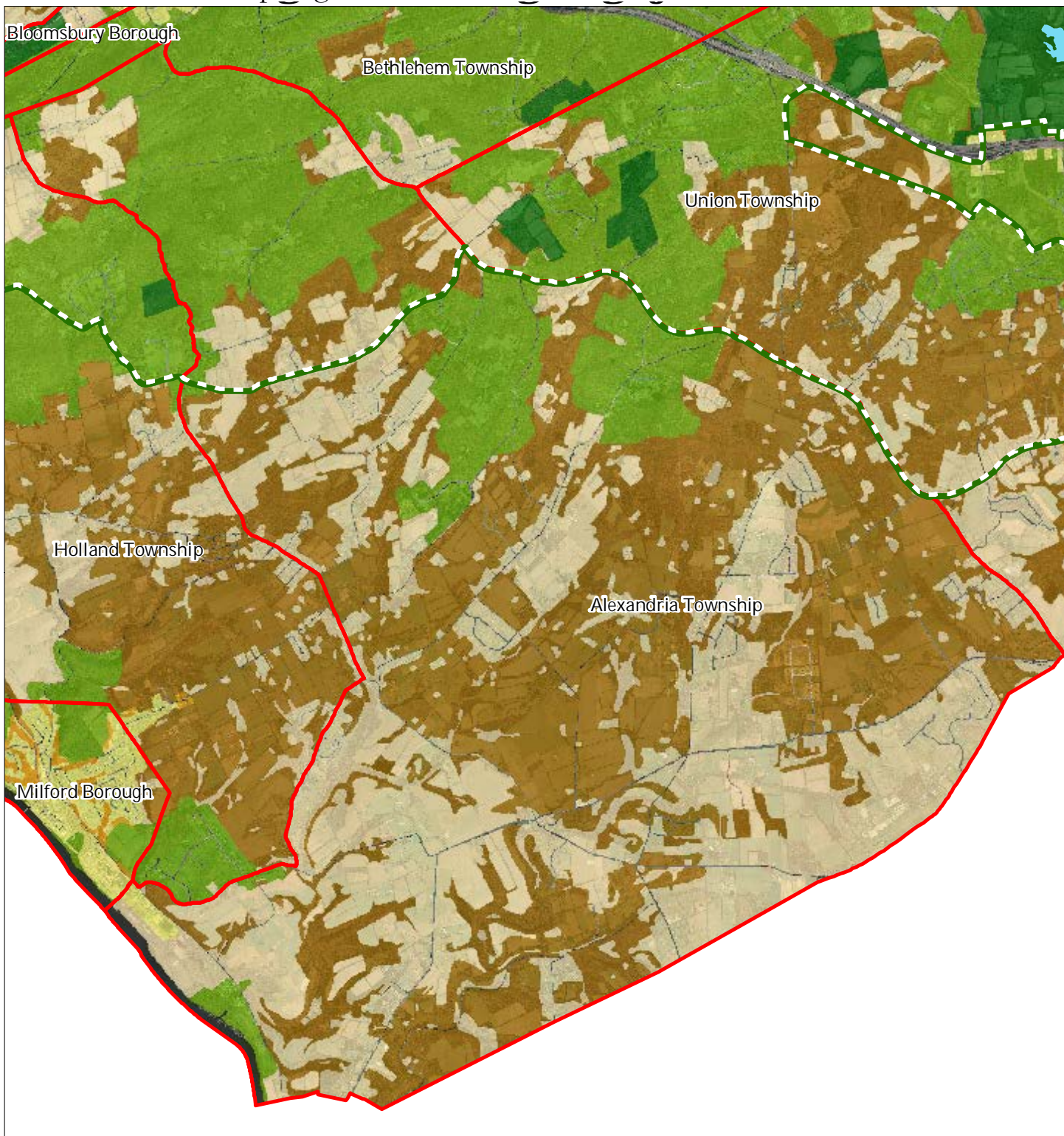
Land Use Plan. An important component of that analysis will be in regard to watershed-based planning. To the extent that the Township shares a HUC14 subwatershed with other municipal and/or county entities, a cooperative planning effort involving all parties will be vital to ensuring sound use and management of the available water resources. It will also be important to understand which, if any, of the adjoining municipalities and/or the county conform to the Highlands RMP and for what portions of their land areas. The land uses, the permitted densities and intensities of development, and the locations and extent of anticipated growth in neighboring Highlands communities that are also pursuing conformance with the RMP are all subject to change. Until information is available concerning such decision-making, a comparison between these master plans will not be meaningful. Further discussion of these aspects will therefore be provided in the next amendment to the Master Plan.

New Jersey municipalities adjacent to Alexandria Township include the following Hunterdon County towns: Borough of Milford; Holland Township; Kingwood Township; Bethlehem Township; Union Township; Franklin Township; and Frenchtown Borough. A review of the plans of adjoining municipalities, the county, and the state is intended to promote compatible land use planning among various jurisdictions. This review determined consistency among the goals and objectives of these plans and jurisdictions. Reviews will be conducted periodically with updated information prepared and provided as appropriate.

EXHIBITS

- A. Township Highlands Preservation Area
- B. Preserved Lands
- C. Highlands Conservation Priority Areas
- D. Preserved Farms, SADC Easements, All Agricultural Uses
- E. Important Farmland Soils
- F. Agricultural Resource Area
- G. Highlands Agricultural Priority Area
- H. Historic, Cultural, and Archaeological Resources Inventory
- I. Baseline Scenic Resources Inventory
- J. State Planning Areas

Exhibit A - Township Highlands Preservation Area



Regional Master Plan Overlay Zone Designation

- | | |
|------------------------------------------------|-----------------------------|
| Zone | Lakes Greater Than 10 acres |
| Protection | Preservation Area |
| Conservation | Municipal Boundaries |
| Existing Community | |
| Sub-Zone | |
| Existing Community Environmentally Constrained | |
| Conservation Environmentally Constrained | |
| Lake Community | |
| Wildlife Management | |

Alexandria Township



1 inch = 0.94 miles



February 2012

Exhibit B - Land Use

Figure 4

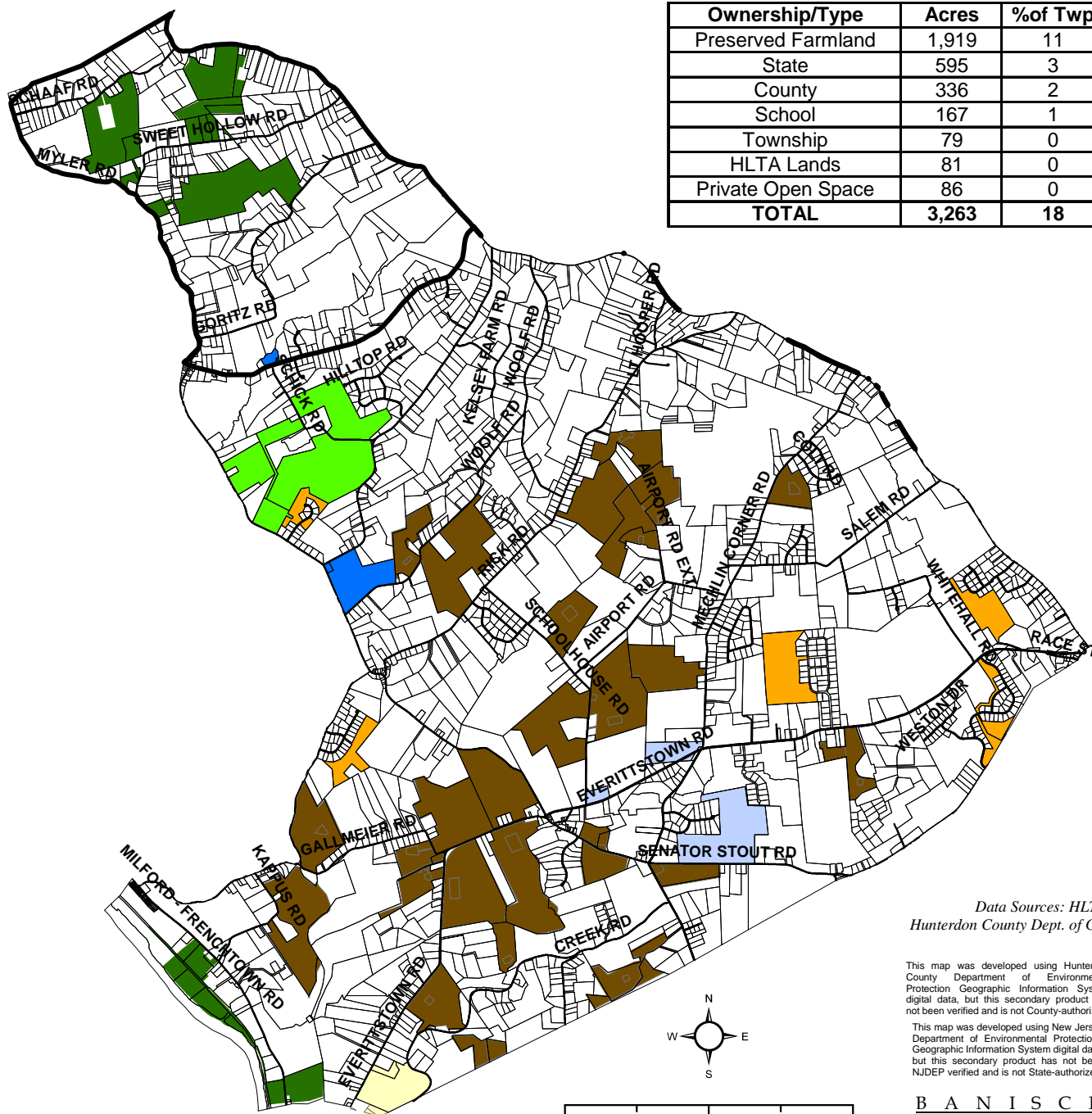
Preserved Lands

Alexandria Township,
 Hunterdon County, NJ
 October 2011

Legend

-  Highlands Preservation Area Boundary
-  Municipal Open Space
-  Private Open Space
-  HLTA Lands
-  County Open Space
-  State Open Space
-  Preserved Farm
-  Public Schools

Ownership/Type	Acres	% of Twp
Preserved Farmland	1,919	11
State	595	3
County	336	2
School	167	1
Township	79	0
HLTA Lands	81	0
Private Open Space	86	0
TOTAL	3,263	18

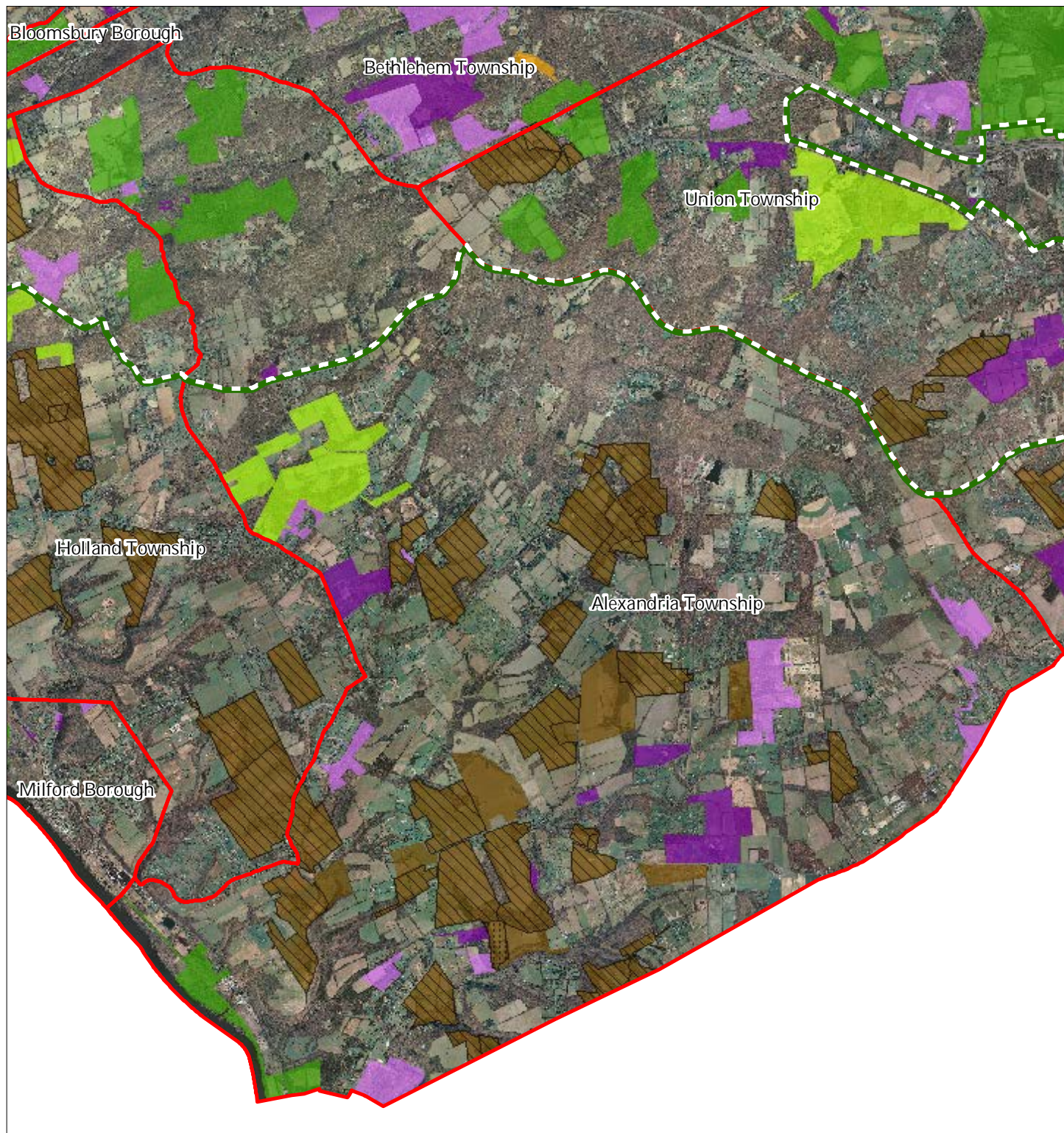


Data Sources: HLTA,
 Hunterdon County Dept. of GIS

This map was developed using Hunterdon County Department of Environmental Protection Geographic Information System digital data, but this secondary product has not been verified and is not County-authorized.

This map was developed using New Jersey Department of Environmental Protection Geographic Information System digital data, but this secondary product has not been NJDEP verified and is not State-authorized.

Exhibit B-2 - Preserved Lands



- | | |
|-----------------------------------------|-------------------------------|
| Preserved Lands | Conservation Easements |
| Federal Open Space | Green Acres |
| State Open Space | SADC Easements |
| County Open Space | SADC Final |
| Municipal Open Space | SADC Preserved |
| Non-Profit/Private Open Space | Municipal Boundaries |
| Water Supply Watershed Lands | Preservation Area |
| Preserved Farmland | |
| Highlands Transfer of Development Lands | |

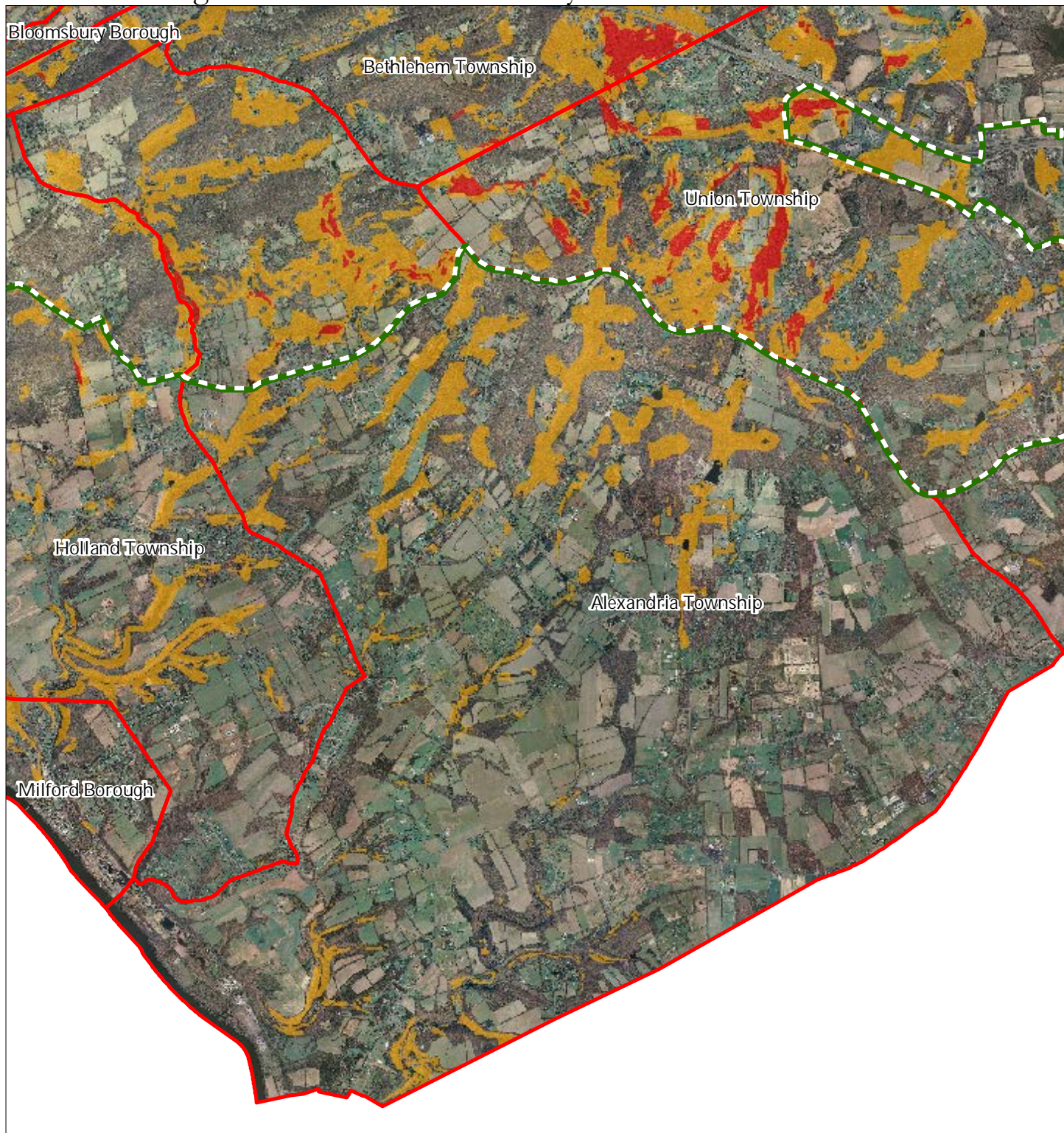
Alexandria Township







1 inch = 0.94 miles



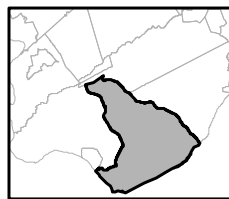
Exhibit C - Highlands Conservation Priority Areas



Conservation Priority Area

-  Moderate
-  High
-  Preservation Area
-  Municipal Boundaries

Alexandria Township

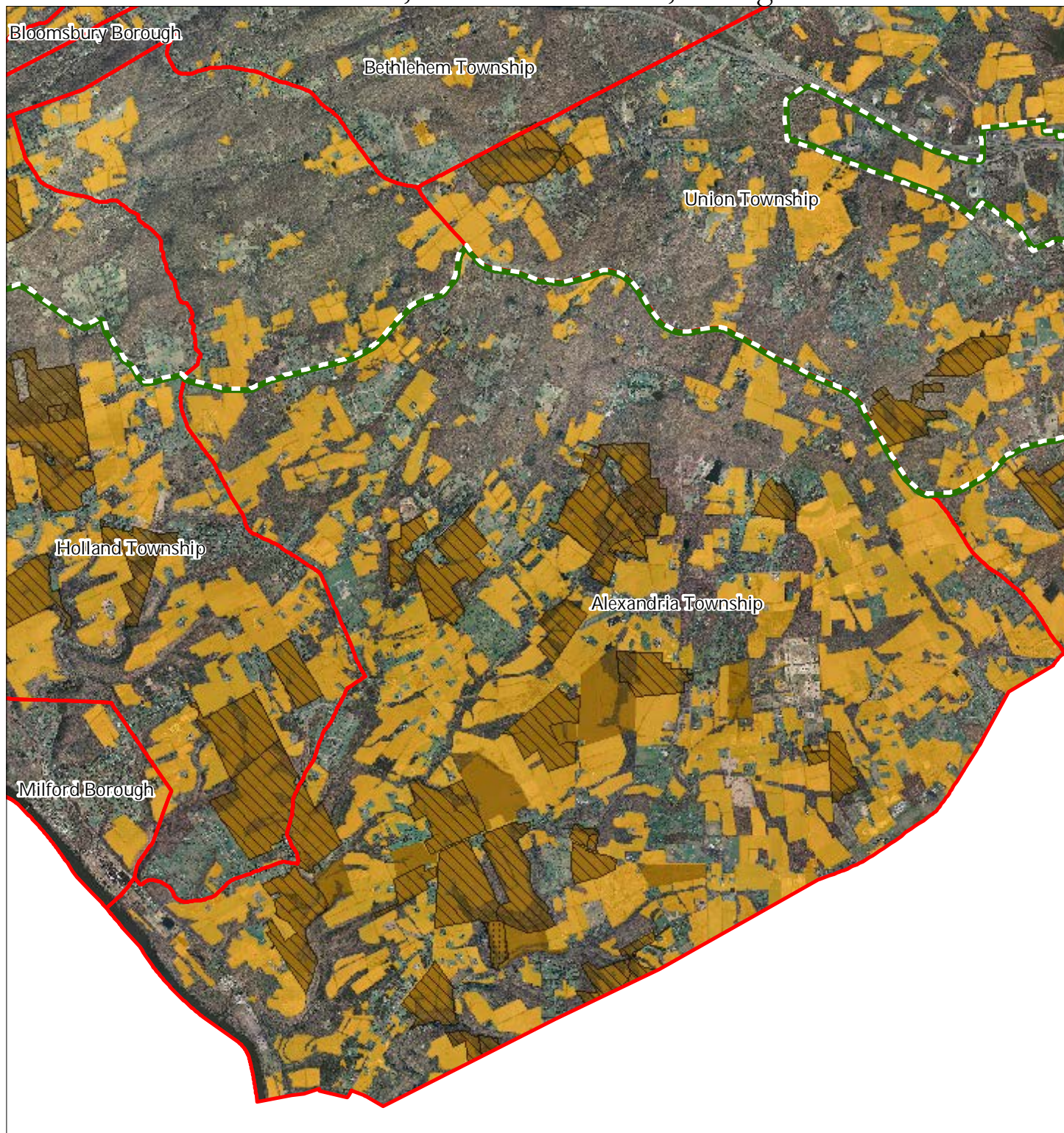


1 inch = 0.94 miles


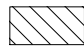



February 2012

Exhibit D - Preserved Farms, SADC Easements, All Agricultural Uses



SADC Easements

-  *SADC Final*
-  *SADC Preserved*
-  Preserved Farmland
-  Agriculture Uses
-  Preservation Area
-  Municipal Boundaries

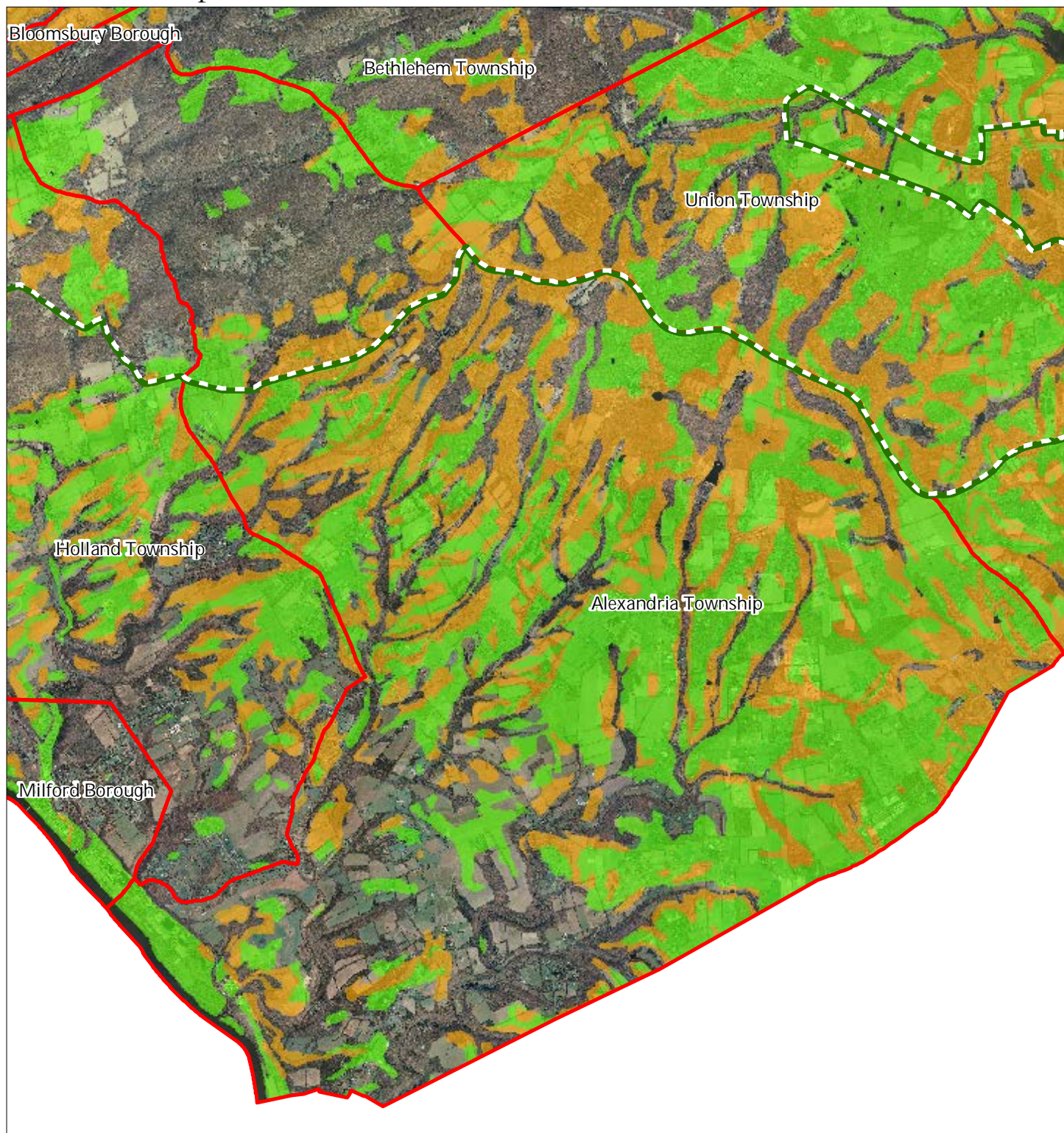
Alexandria Township



1 inch = 0.94 miles



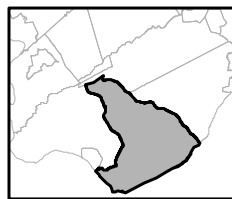
Exhibit E - Important Farmland Soils



Important Farmland Soils

- Prime Farmland
- Farmland of Local Importance
- Farmland of Statewide Importance
- Farmland of Unique Importance
- Preservation Area
- Municipal Boundaries

Alexandria Township

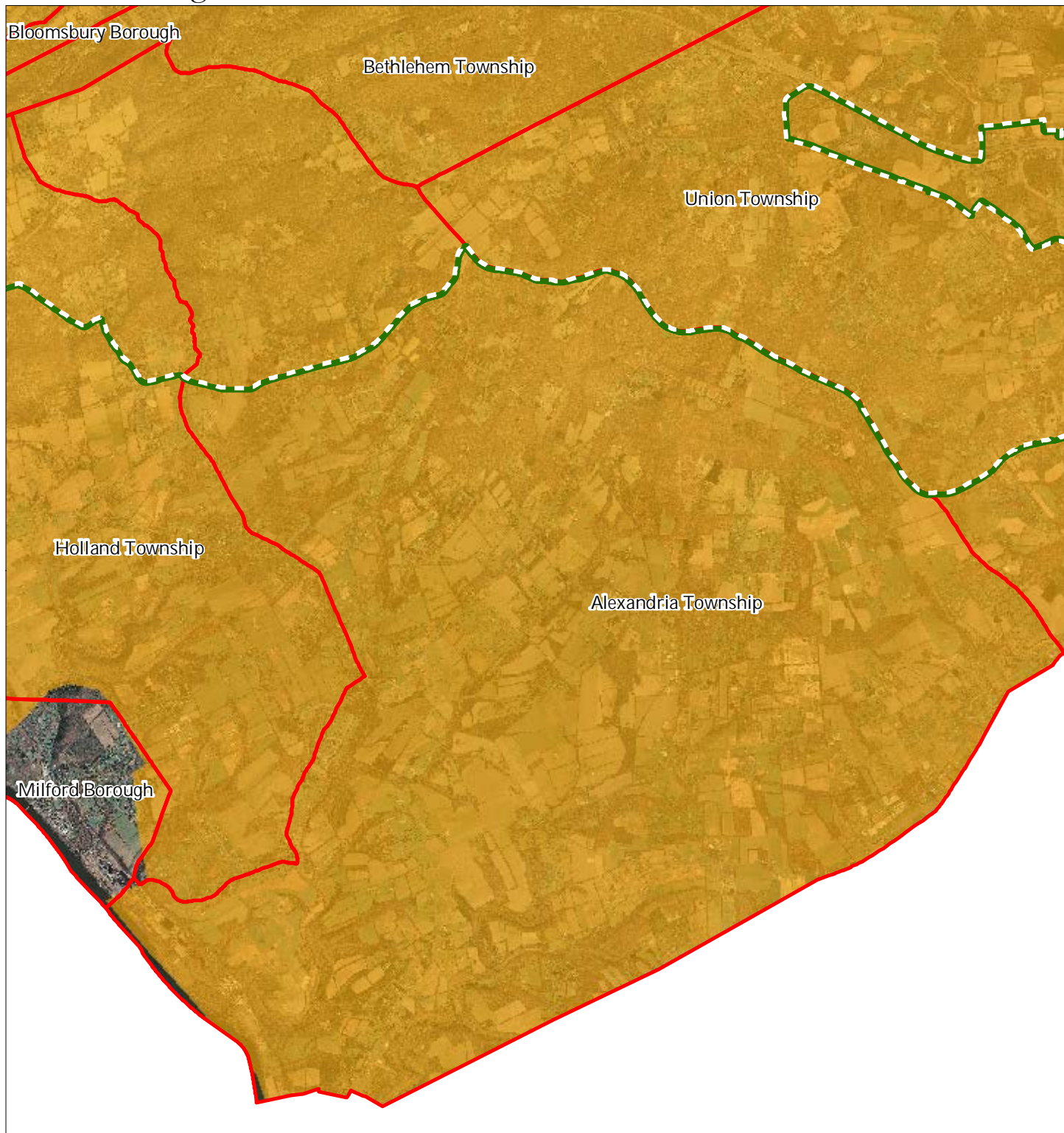





1 inch = 0.94 miles



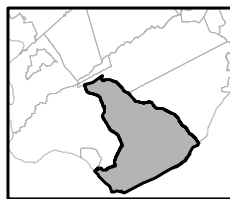
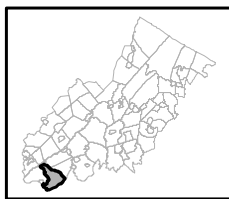
February 2012

Exhibit F - Agricultural Resource Area



-  Agricultural Resource Area
-  Preservation Area
-  Municipal Boundaries

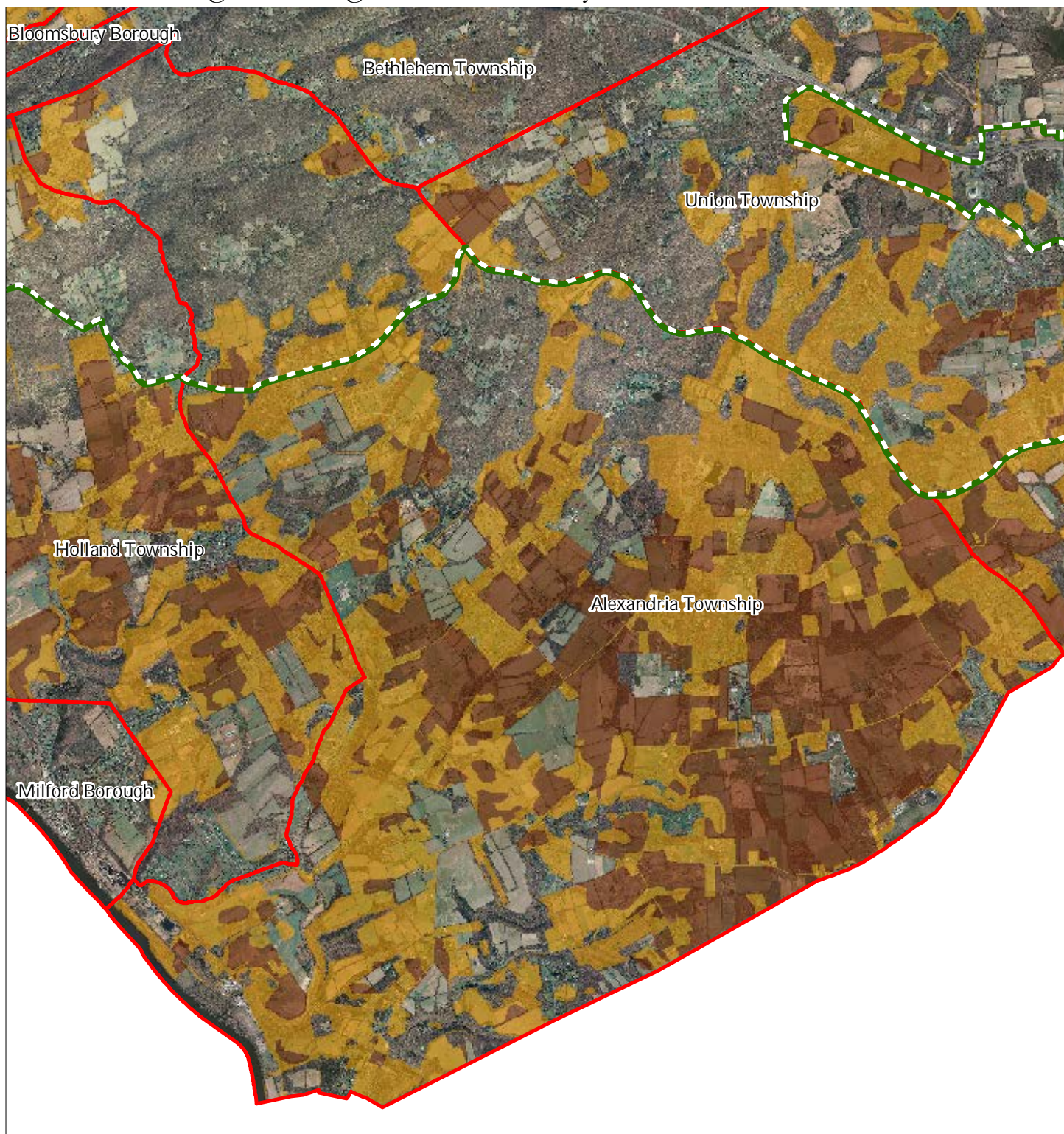
Alexandria Township



1 inch = 0.94 miles



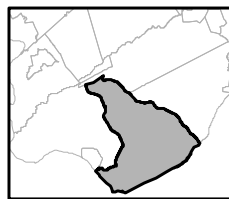
Exhibit G - Highlands Agricultural Priority Area



Agricultural Priority Area

-  Moderate
-  High
-  Preservation Area
-  Municipal Boundaries

Alexandria Township

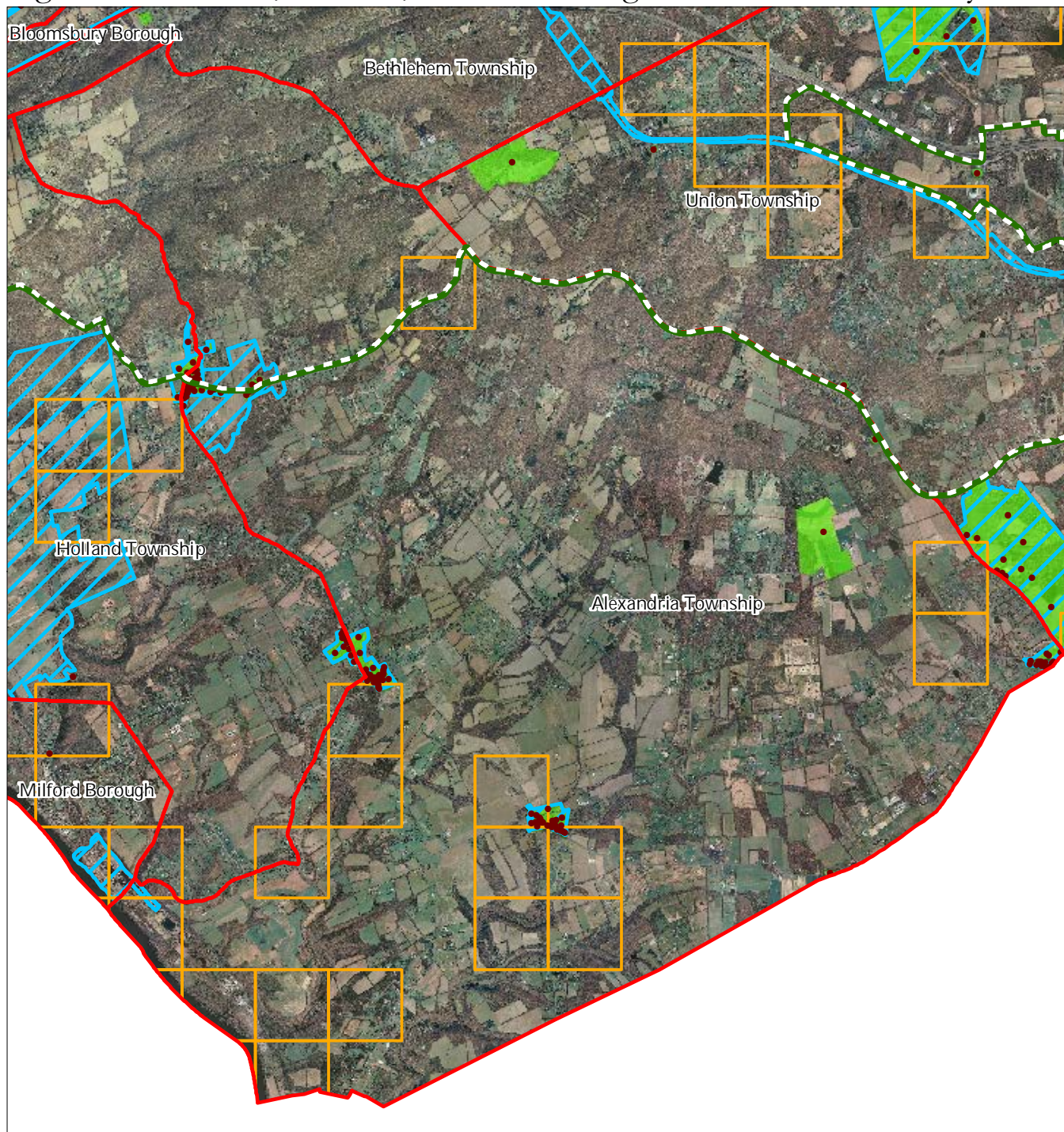


1 inch = 0.94 miles



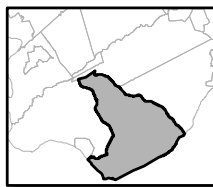
February 2012

Figure H - Historic, Cultural, and Archaeological Resources Inventory



-  Preservation Area
-  Municipal Boundaries
-  Archaeological Grids (1 sqmi)
-  NJ Historic Districts
-  Historic Property Points
-  Historic Property Polygons

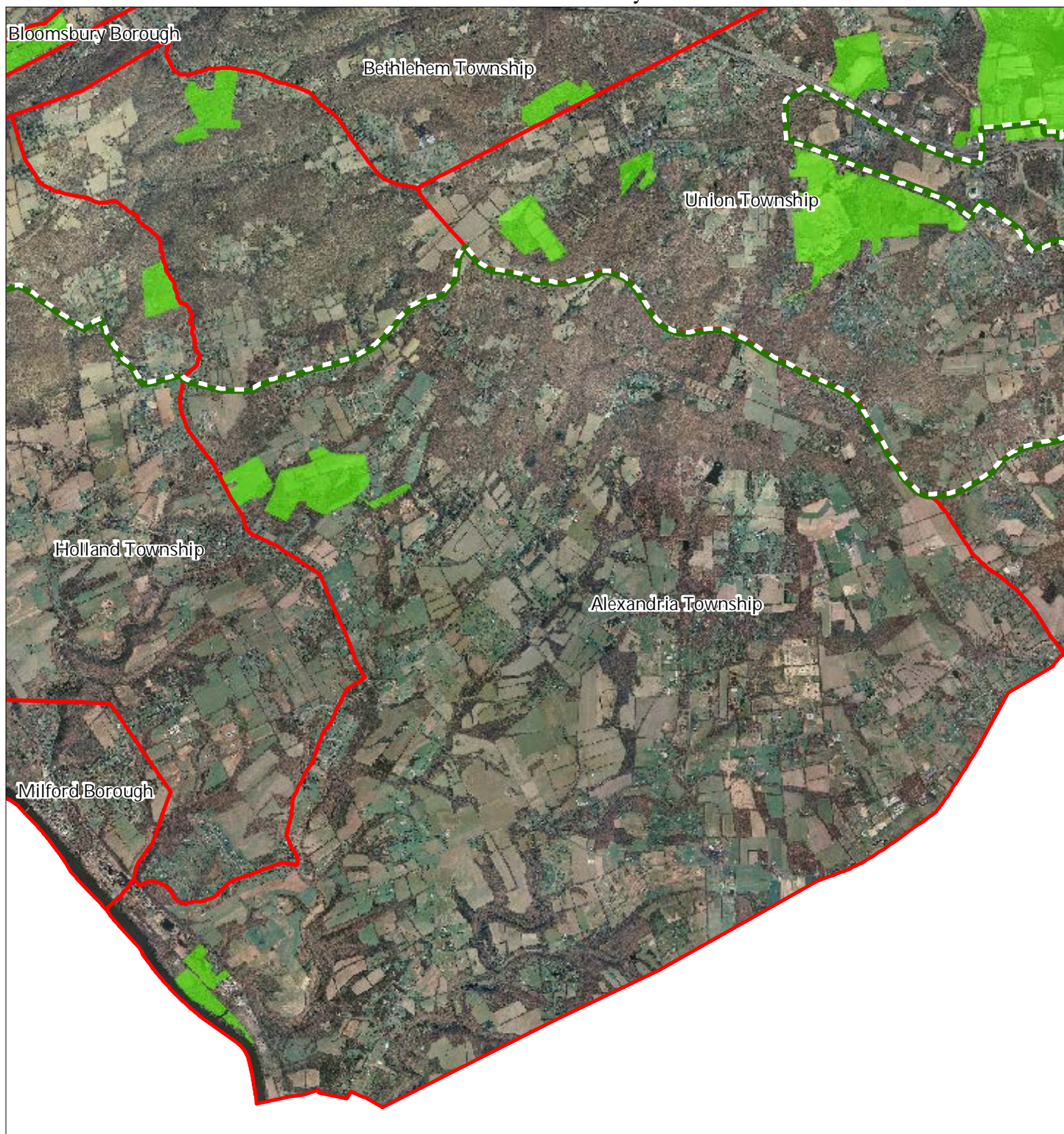
Alexandria Township






1 inch = 0.94 miles



Exhibit I - Baseline Scenic Resource Inventory



-  Scenic Resources
-  Municipal Boundaries
-  Preservation Area

Alexandria Township

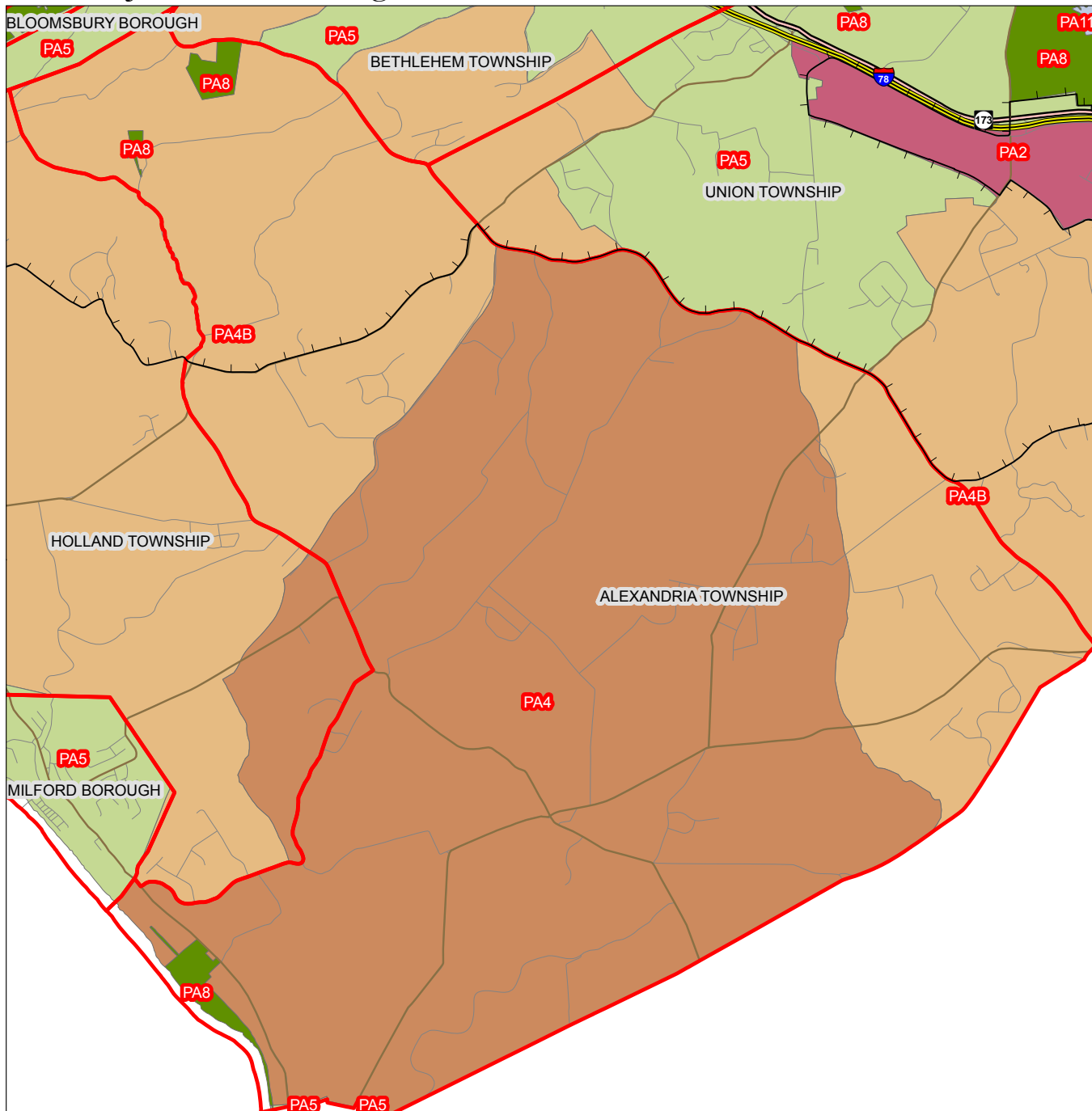


1 inch = 0.94 miles



February 2012

Exhibit J - State Planning Areas



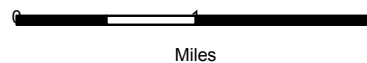
Legend

- Preservation Area
- Municipal Boundaries
- Interstate Highways
- U.S. Routes
- State Routes
- County Routes
- Designated Centers*

State Planning Areas*

- METROPOLITAN (PA1)
- SUBURBAN (PA2)
- FRINGE (PA3)
- RURAL (PA4)
- RURAL ENVIRONMENTALLY SENSITIVE (PA42)

- ENVIRONMENTALLY SENSITIVE (PA5)
- PARK (PA6)
- FEDERAL PARK (PA7)
- STATE PARK (PA8)
- WATER (PA11)
- MILITARY (PA12)



* All designated centers expired as of 5/19/2010. Center designation may be redesignated by the State Planning Commission and the Highlands Council. State Planning Areas are from the State Development and Redevelopment Plan.

