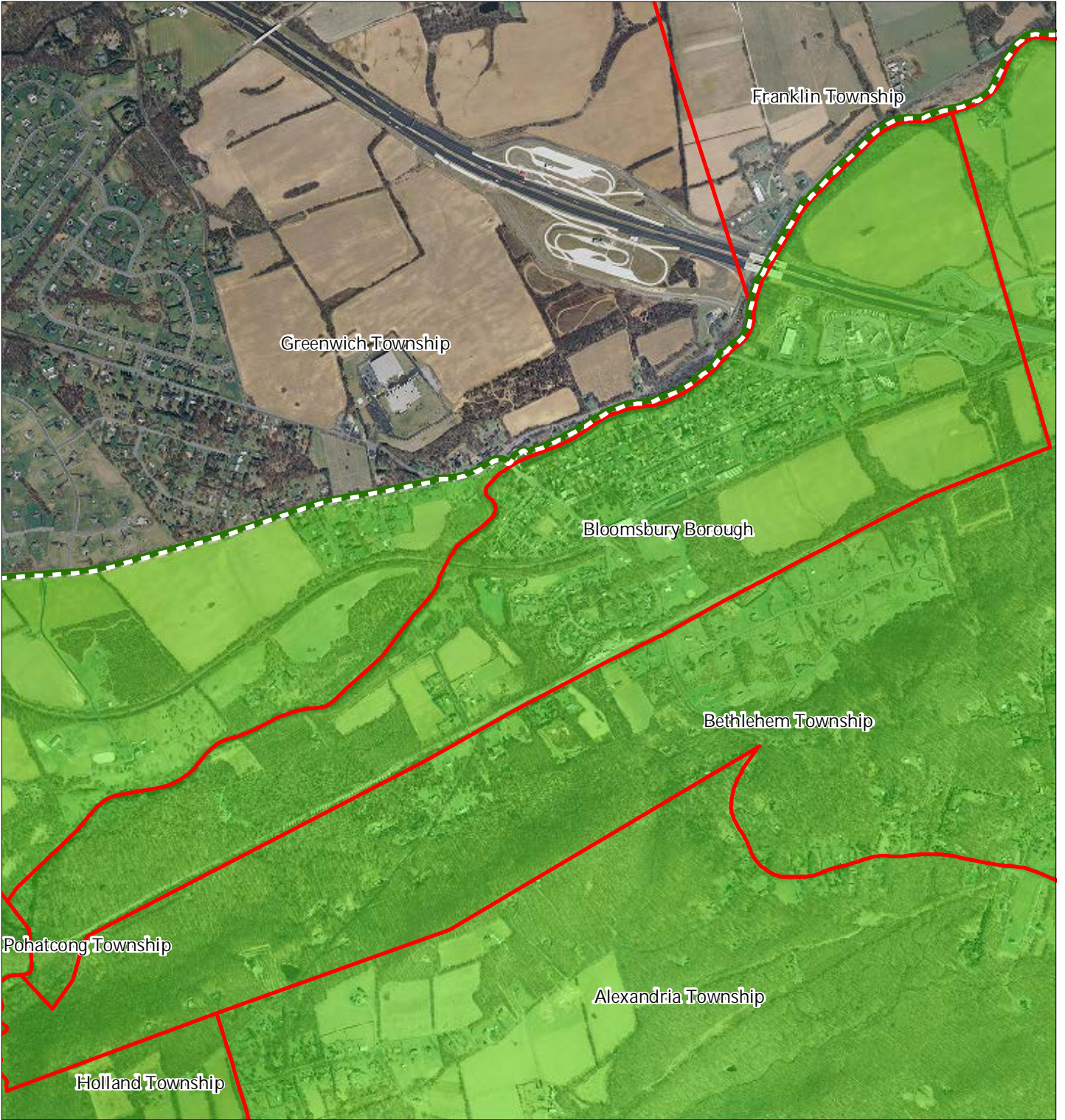


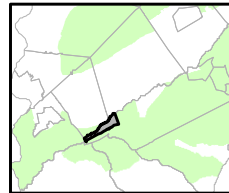
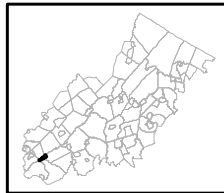


Figure 1: Preservation Area



-  Preservation Area
-  Municipal Boundaries

Bloomsbury Borough



1 inch = 0.28 miles



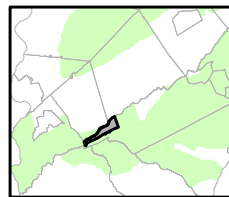
Figure 2: Land Use Capability Map Zones



Regional Master Plan Overlay Zone Designation

- | | |
|--|---|
|  <i>Protection</i> |  Lakes Greater Than 10 acres |
|  <i>Conservation</i> |  Preservation Area |
|  <i>Existing Community</i> |  Municipal Boundaries |
| Sub-Zone | |
|  <i>Existing Community Environmentally Constrained</i> | |
|  <i>Conservation Environmentally Constrained</i> | |
|  <i>Lake Community</i> | |
|  <i>Wildlife Management</i> | |

Bloomsbury Borough

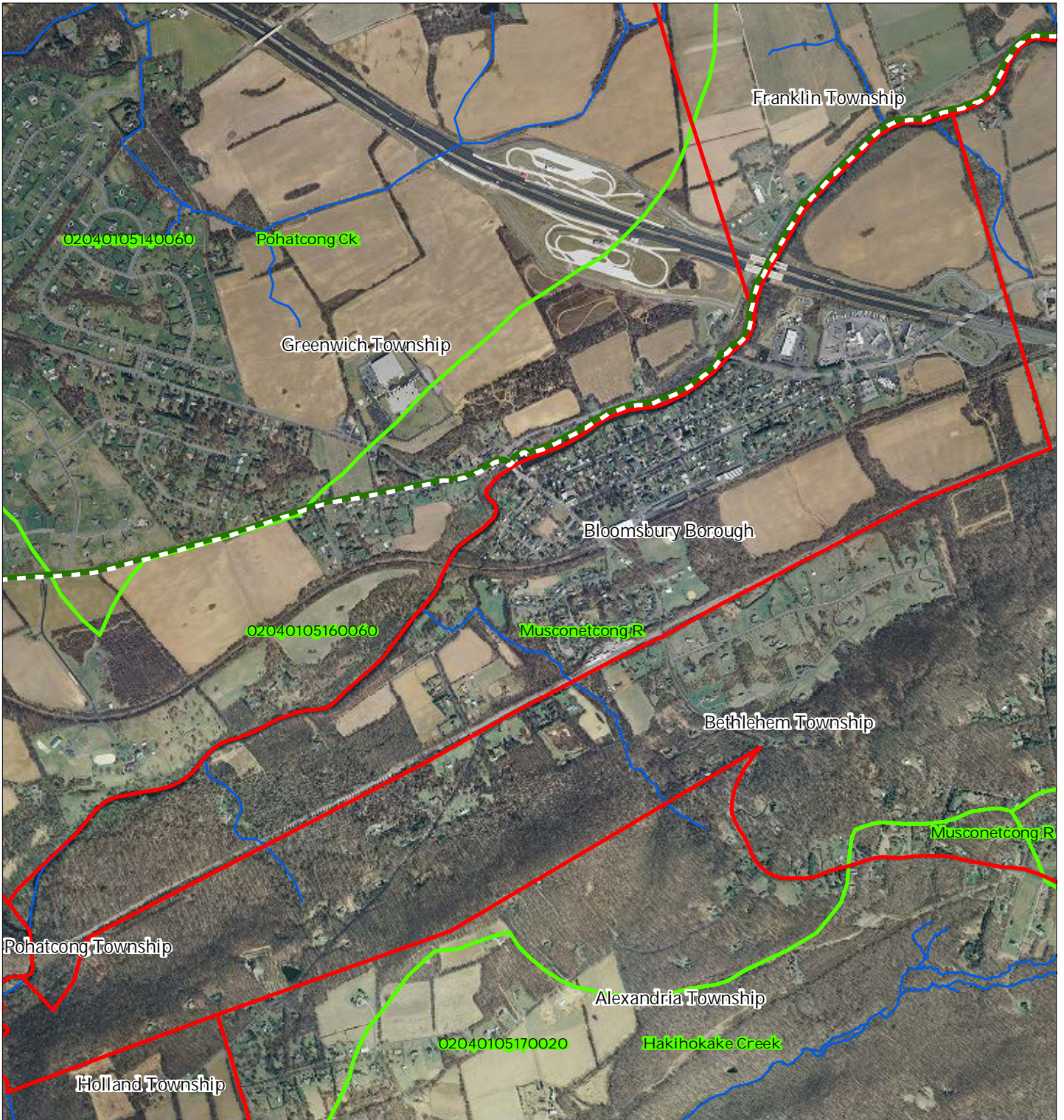






1 inch = 0.28 miles



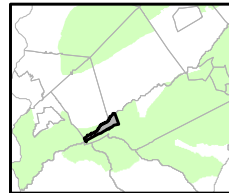
Sept 2011

Figure 3: HUC 14 Boundaries



-  HUC 14 Subwatersheds
-  Stream Centerlines
-  Preservation Area
-  Municipal Boundaries

Bloomsbury Borough






1 inch = 0.28 miles

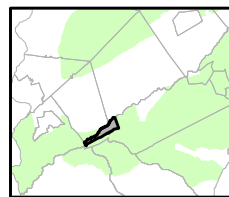
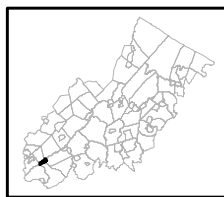


Figure 4: Forest Resource Area



-  Forest Resource Area
-  Preservation Area
-  Municipal Boundaries

Bloomsbury Borough






1 inch = 0.28 miles

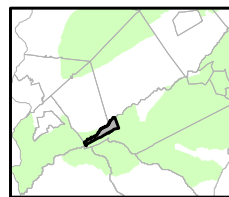
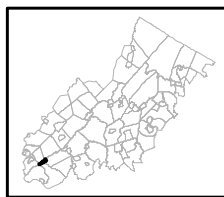


Figure 5: Total Forest Area



-  Forested Areas
-  Preservation Area
-  Municipal Boundaries

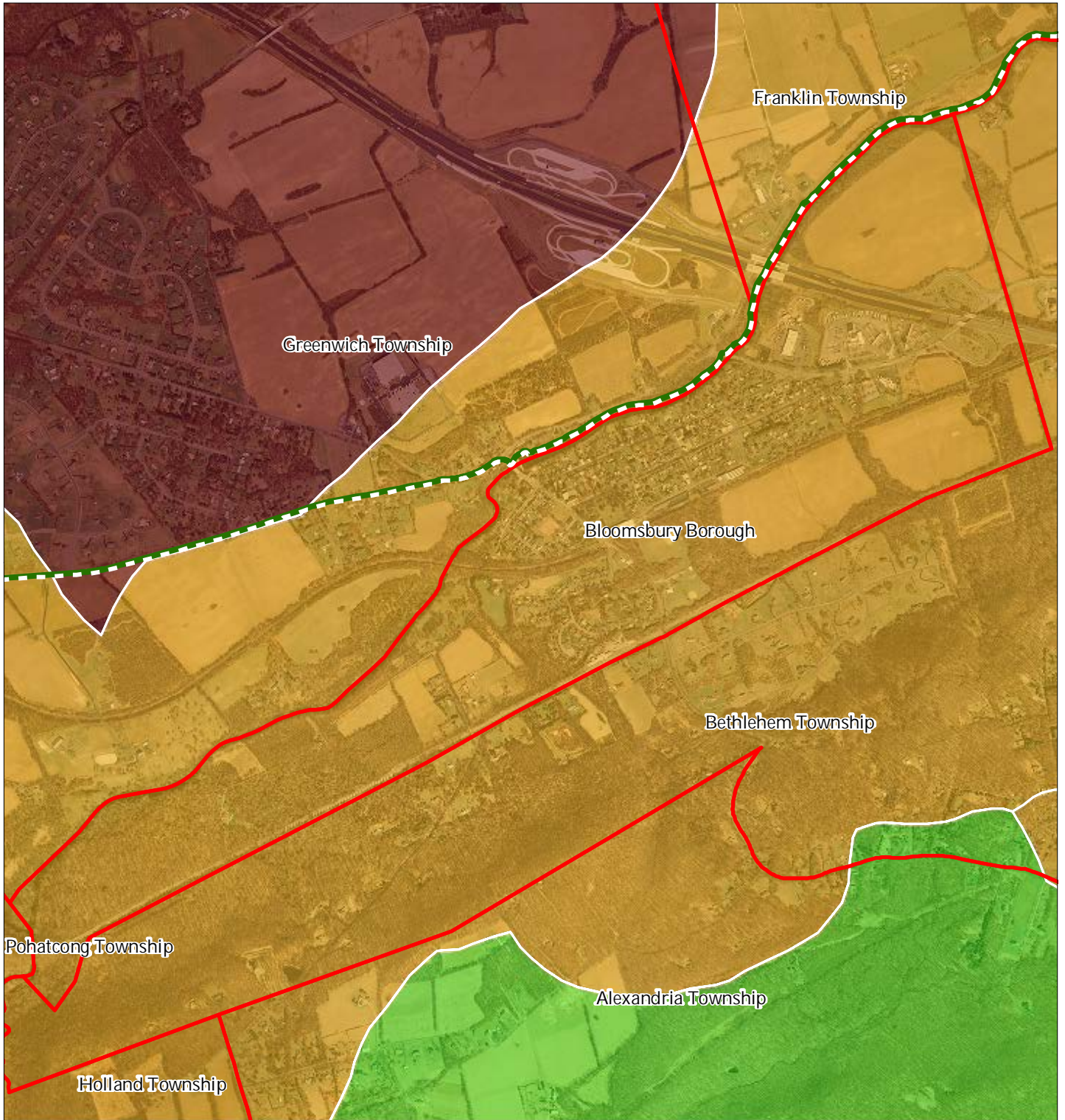
Bloomsbury Borough








1 inch = 0.28 miles



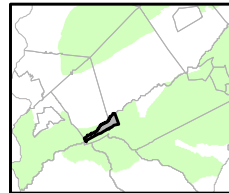
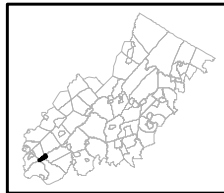
Figure 6: Forest Subwatersheds



Forest Integrity by HUC14 Subwatershed

-  *Low*
-  *Moderate*
-  *High*
-  Preservation Area
-  Municipal Boundaries

Bloomsbury Borough

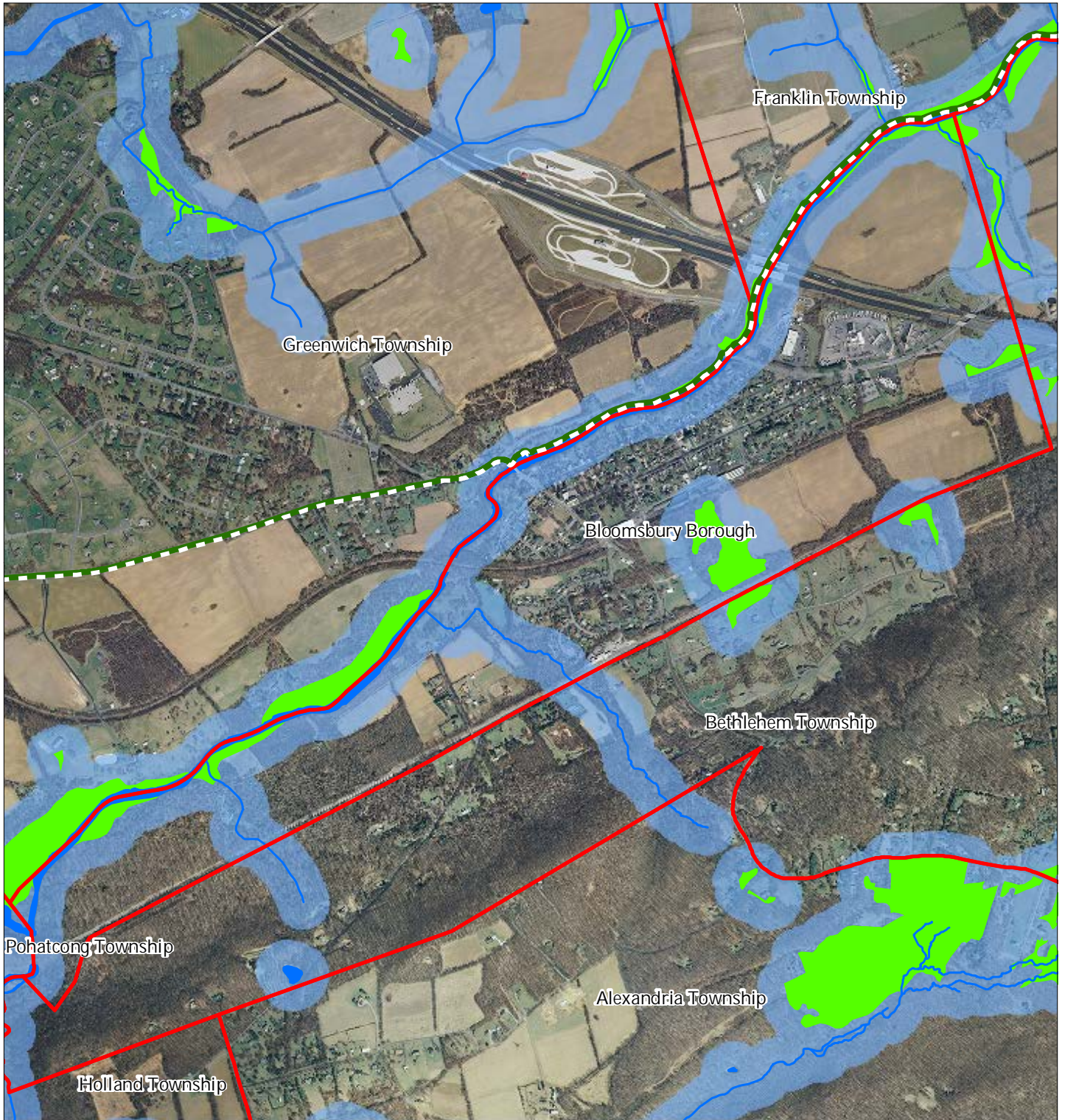


1 inch = 0.28 miles



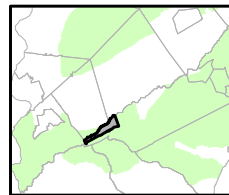
Sept 2011

Figure 7: Highlands Open Waters



- Highlands Open Water Buffers (300ft)
- Streams
- Wetlands
- Lakes & Ponds
- Preservation Area
- Municipal Boundaries

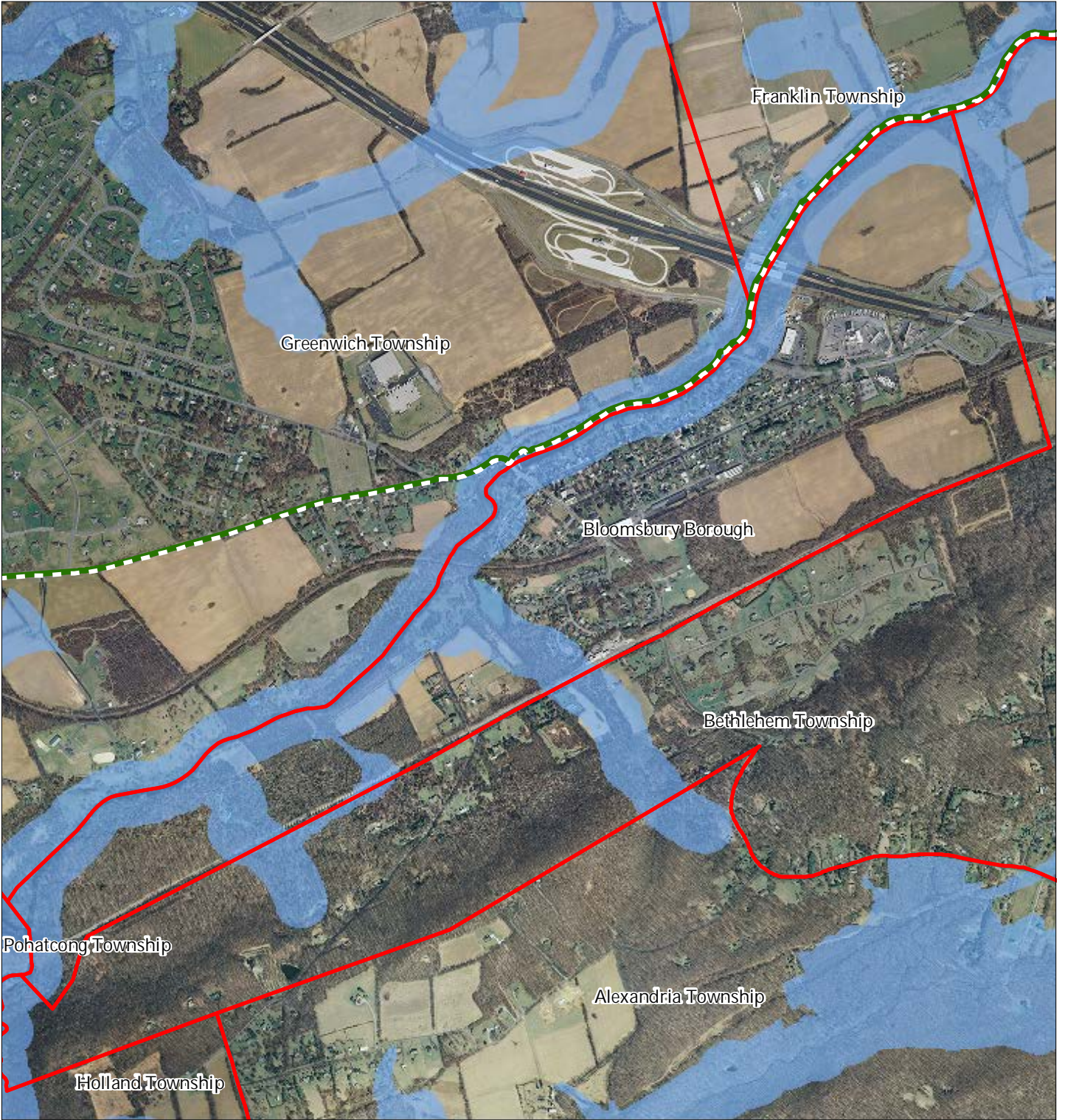
Bloomsbury Borough






1 inch = 0.28 miles

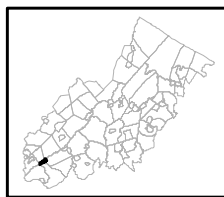


Figure 8: Highlands Riparian Areas



-  Riparian Area
-  Preservation Area
-  Municipal Boundaries

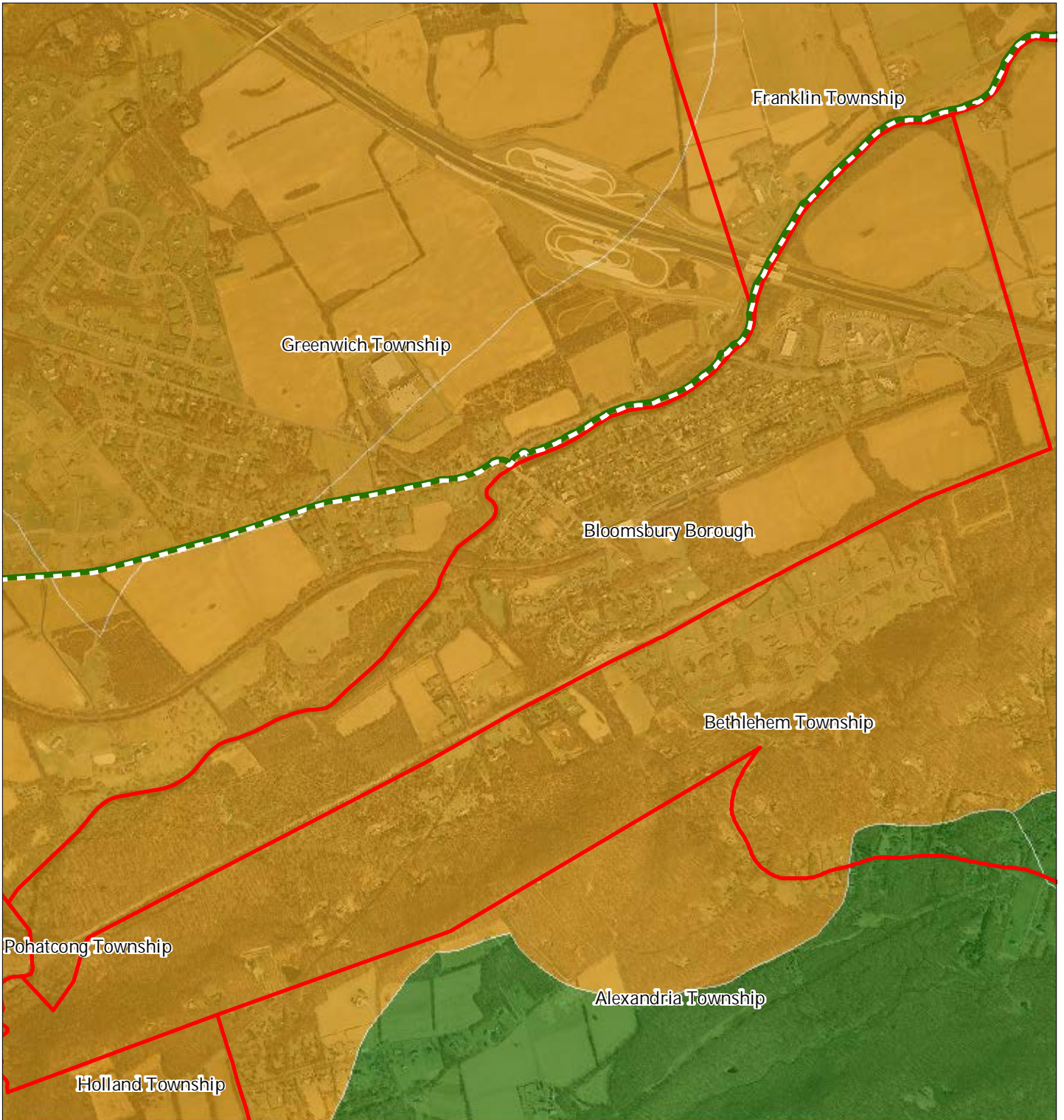
Bloomsbury Borough








1 inch = 0.28 miles



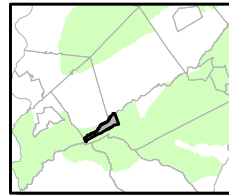
Figure 9: Watershed Values



Watershed Values by HUC14 Subwatershed

-  *Low*
-  *Moderate*
-  *High*
-  Preservation Area
-  Municipal Boundaries

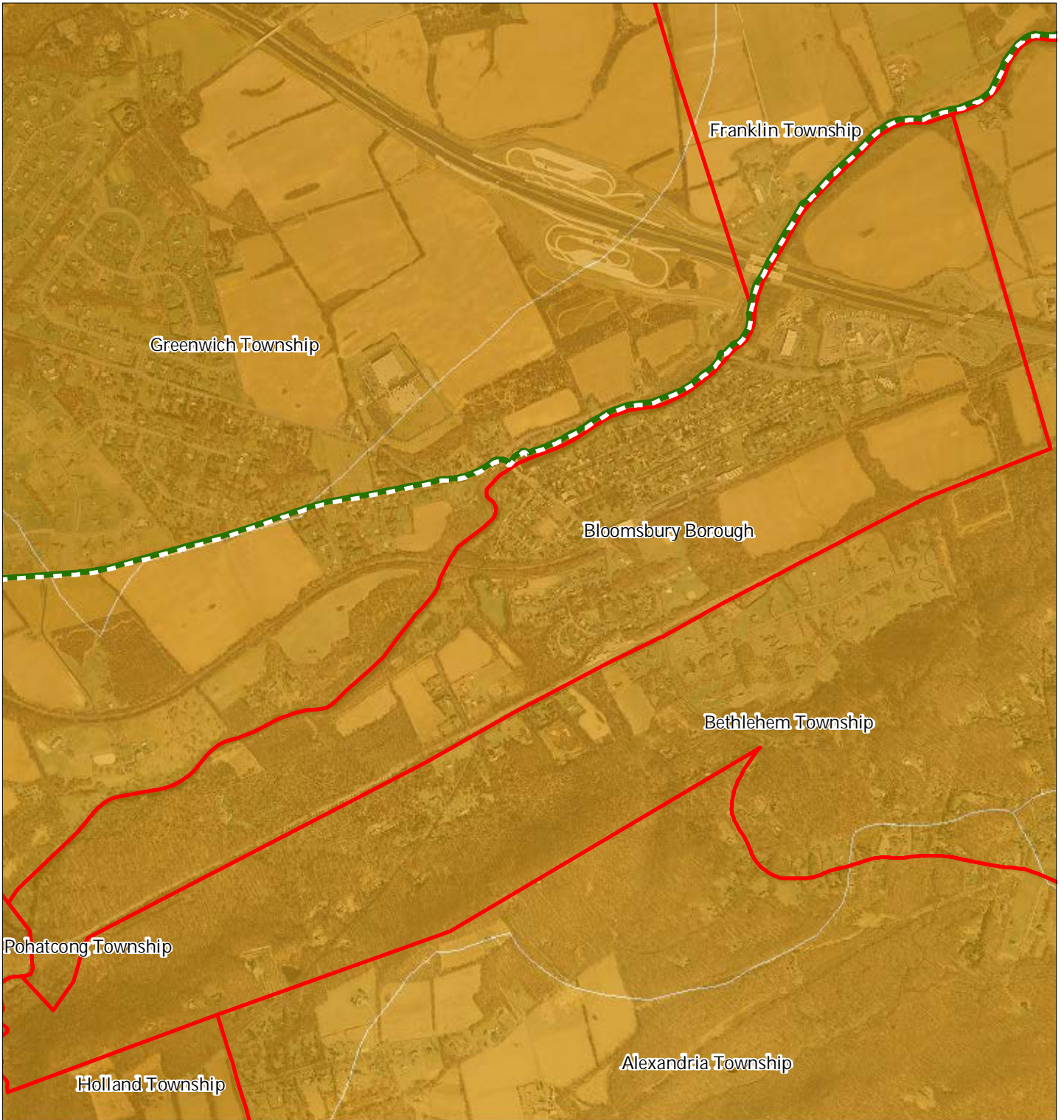
Bloomsbury Borough



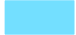




1 inch = 0.28 miles



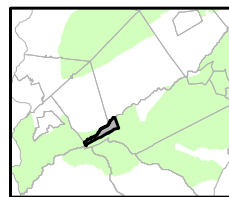
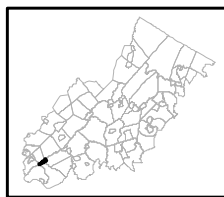
Figure 10: Riparian Integrity



Riparian Integrity by HUC14 Subwatershed

-  *Low*
-  *Moderate*
-  *High*
-  Preservation Area
-  Municipal Boundaries

Bloomsbury Borough



1 inch = 0.28 miles







Sept 2011

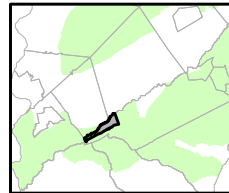
Figure 11: Steep Slope Protection Areas



Steep Slopes

-  Moderate
-  Severe
-  Preservation Area
-  Municipal Boundaries

Bloomsbury Borough






1 inch = 0.28 miles

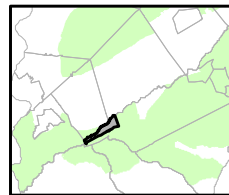
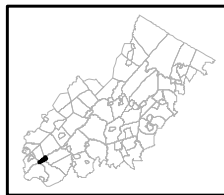


Figure 12: Critical Wildlife Habitat



-  Critical Wildlife Habitat
-  Preservation Area
-  Municipal Boundaries

Bloomsbury Borough






1 inch = 0.28 miles

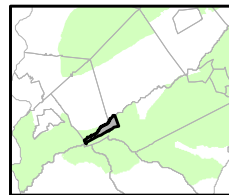


Figure 13: Significant Natural Areas



-  Significant Natural Areas
-  Preservation Area
-  Municipal Boundaries

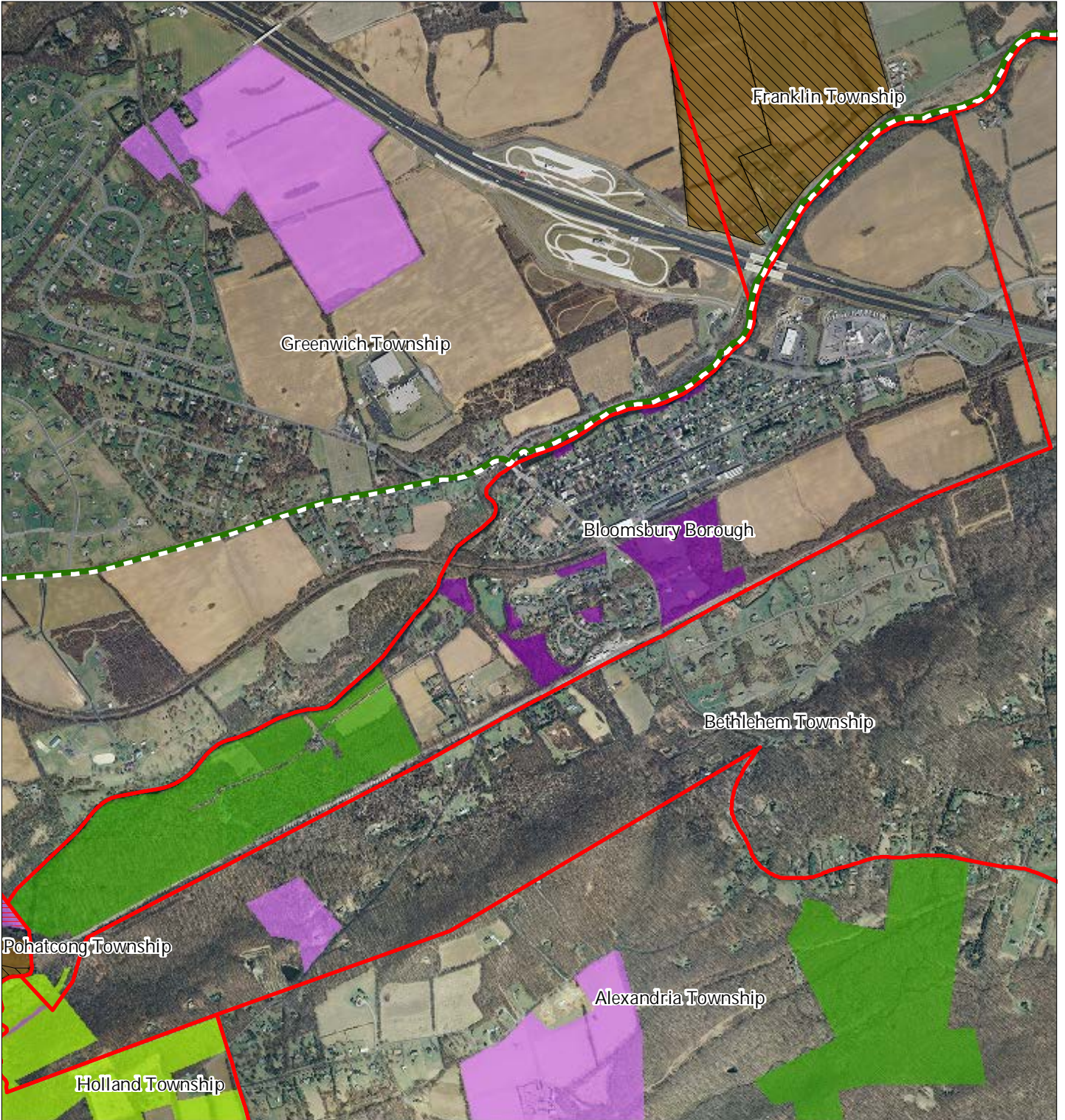
Bloomsbury Borough



1 inch = 0.28 miles

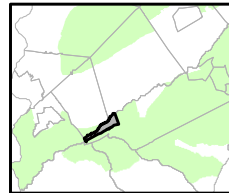
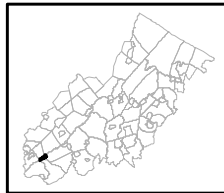


Figure 15: Preserved Lands



- | | |
|---|-------------------------------|
| Preserved Lands | Conservation Easements |
| Federal Open Space | Green Acres |
| State Open Space | SADC Easements |
| County Open Space | SADC Final |
| Municipal Open Space | SADC Preserved |
| Non-Profit/Private Open Space | Municipal Boundaries |
| Water Supply Watershed Lands | Preservation Area |
| Preserved Farmland | |
| Highlands Transfer of Development Lands | |

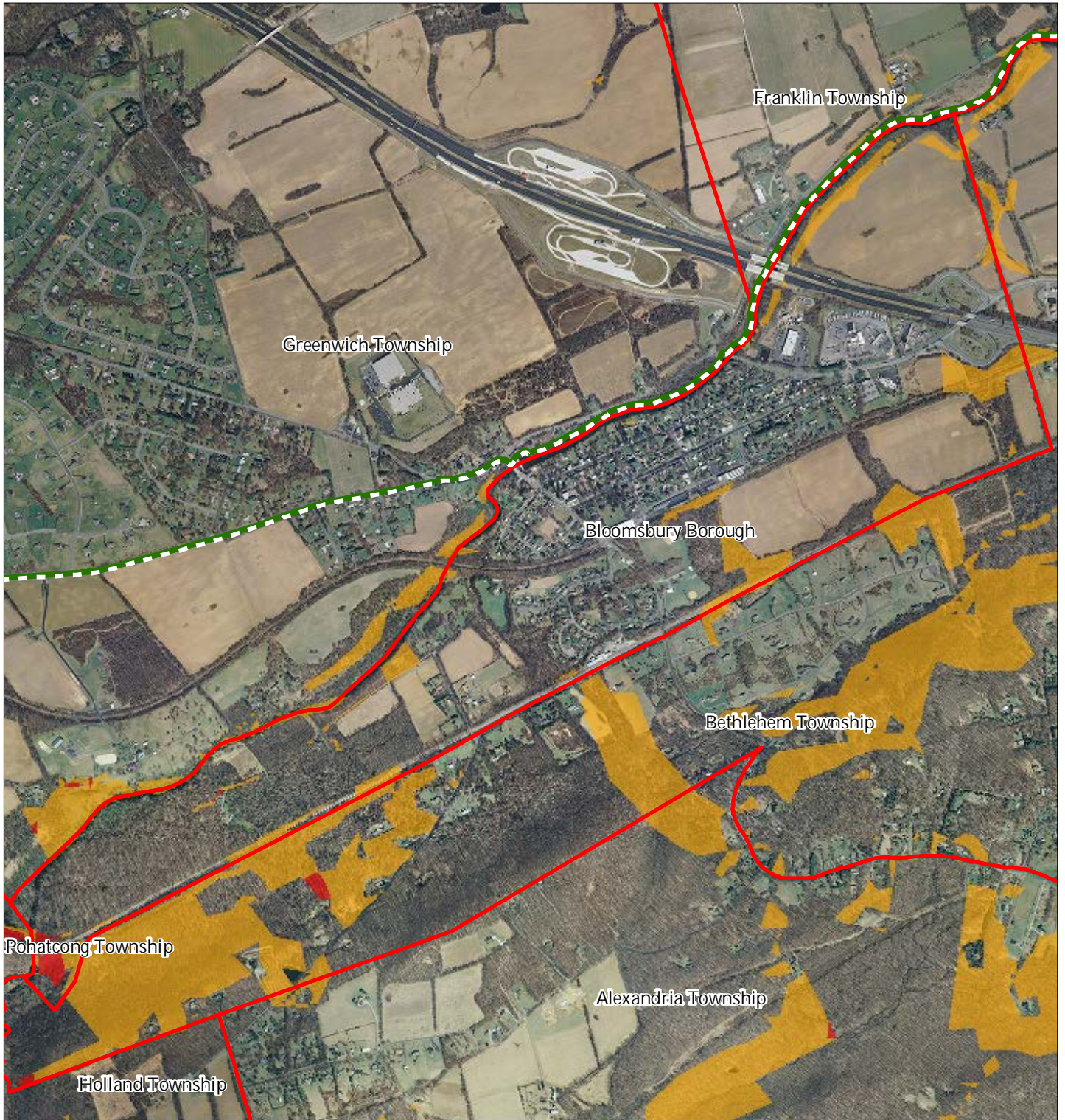
Bloomsbury Borough







1 inch = 0.28 miles



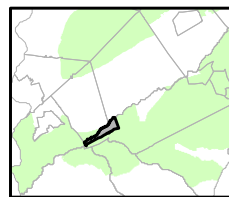
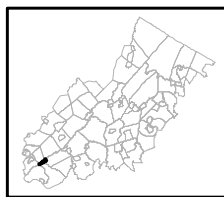
Figure 16: Highlands Conservation Priority Area



Conservation Priority Area

-  Moderate
-  High
-  Preservation Area
-  Municipal Boundaries

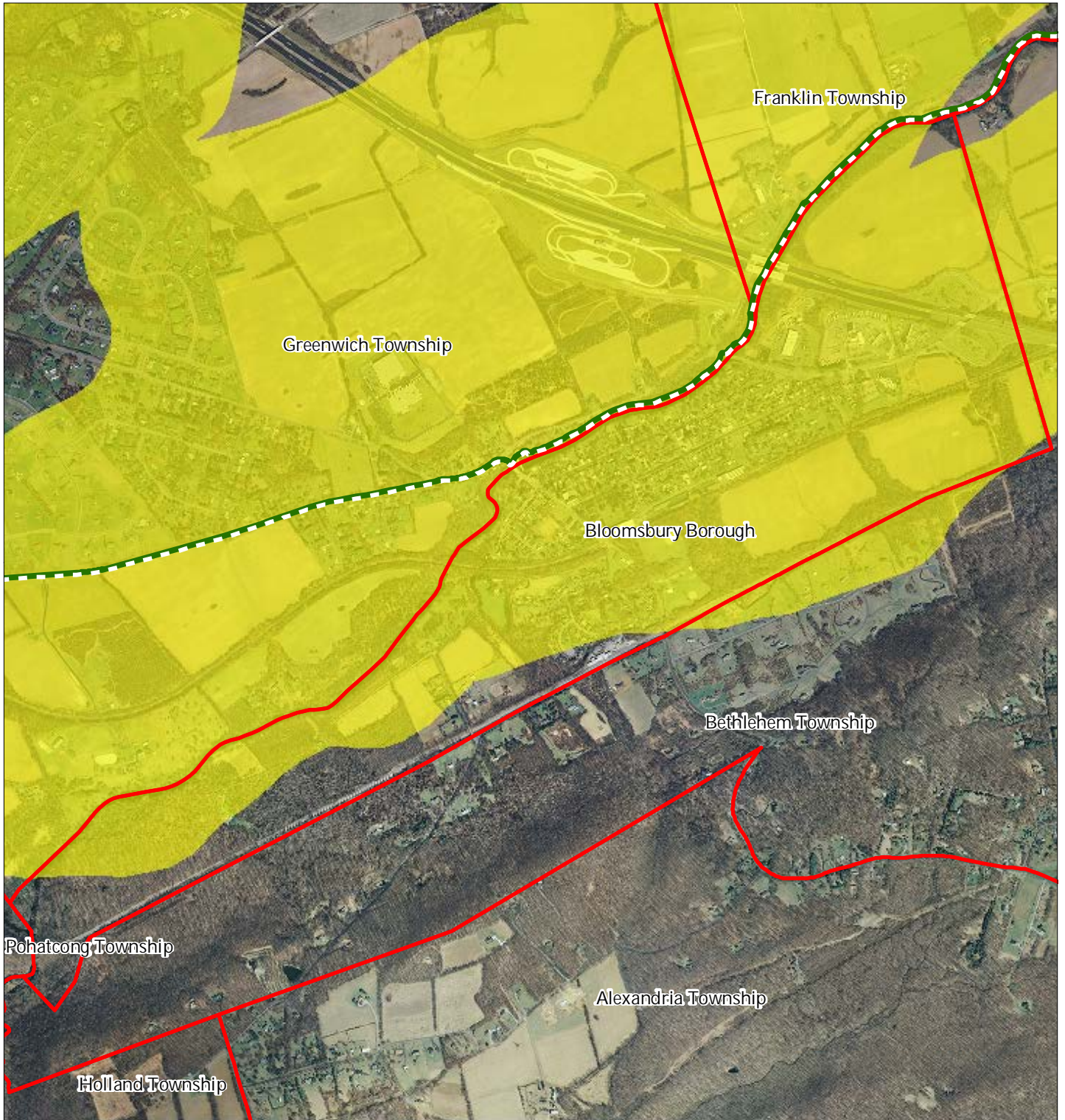
Bloomsbury Borough






1 inch = 0.28 miles

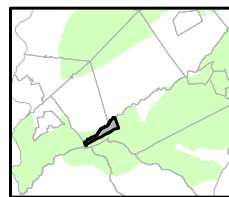
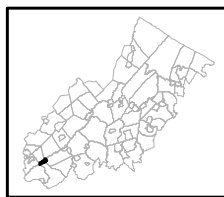


Figure 18: Carbonate Rock Area



-  Carbonate Rock Area
-  Preservation Area
-  Municipal Boundaries

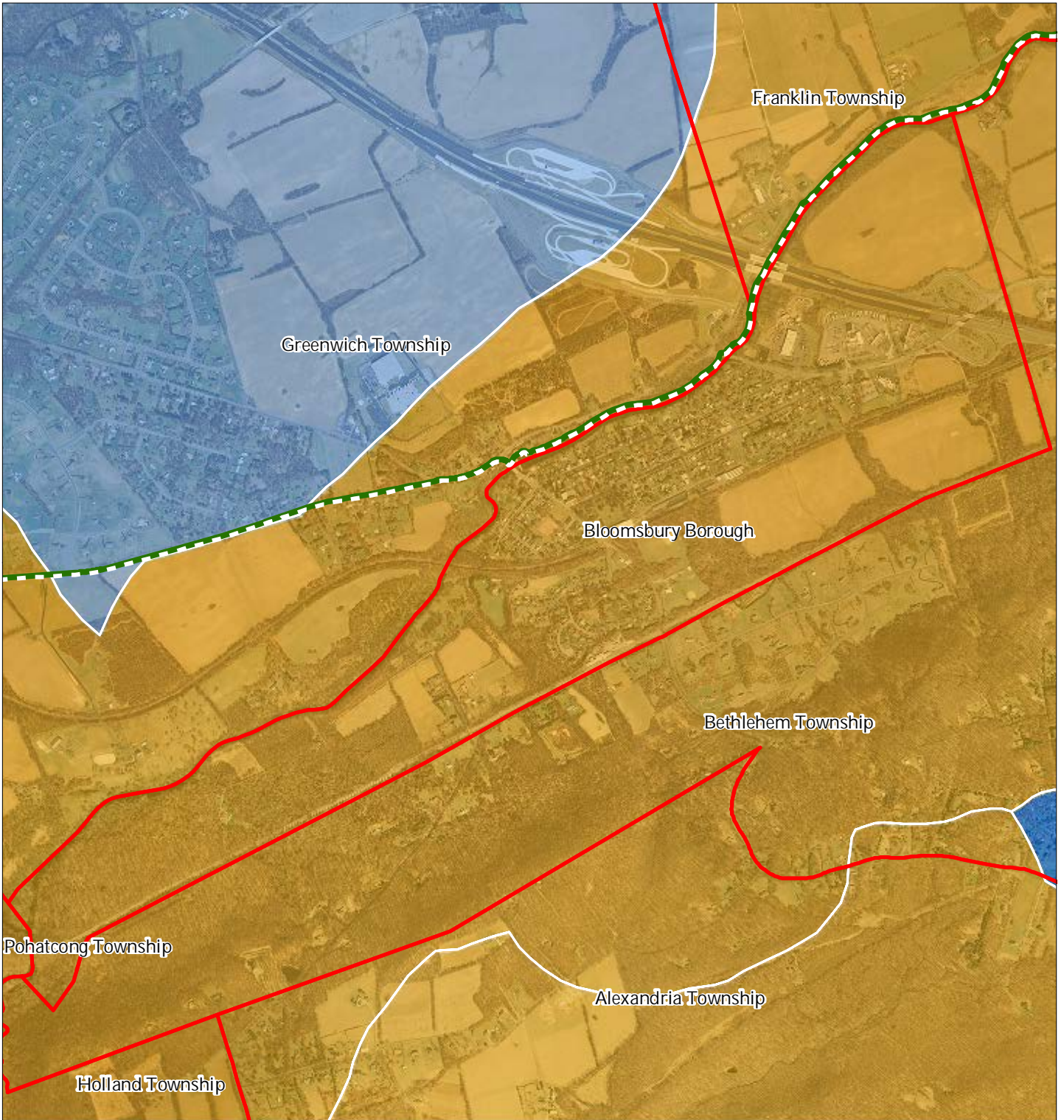
Bloomsbury Borough



1 inch = 0.28 miles





Figure 20: Net Water Availability



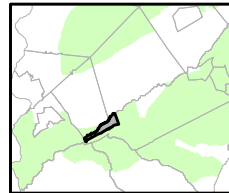
Net Water Availability By HUC14

Million Gallons Per Day (MGD)

- 0.10 - 0.39
- 0.05 - 0.09
- 0.00 - 0.04
- 0.09 - 0.00
- 0.99 - -0.10
- 7.10 - -1.00

-  Preservation Area
-  Municipal Boundaries

Bloomsbury Borough

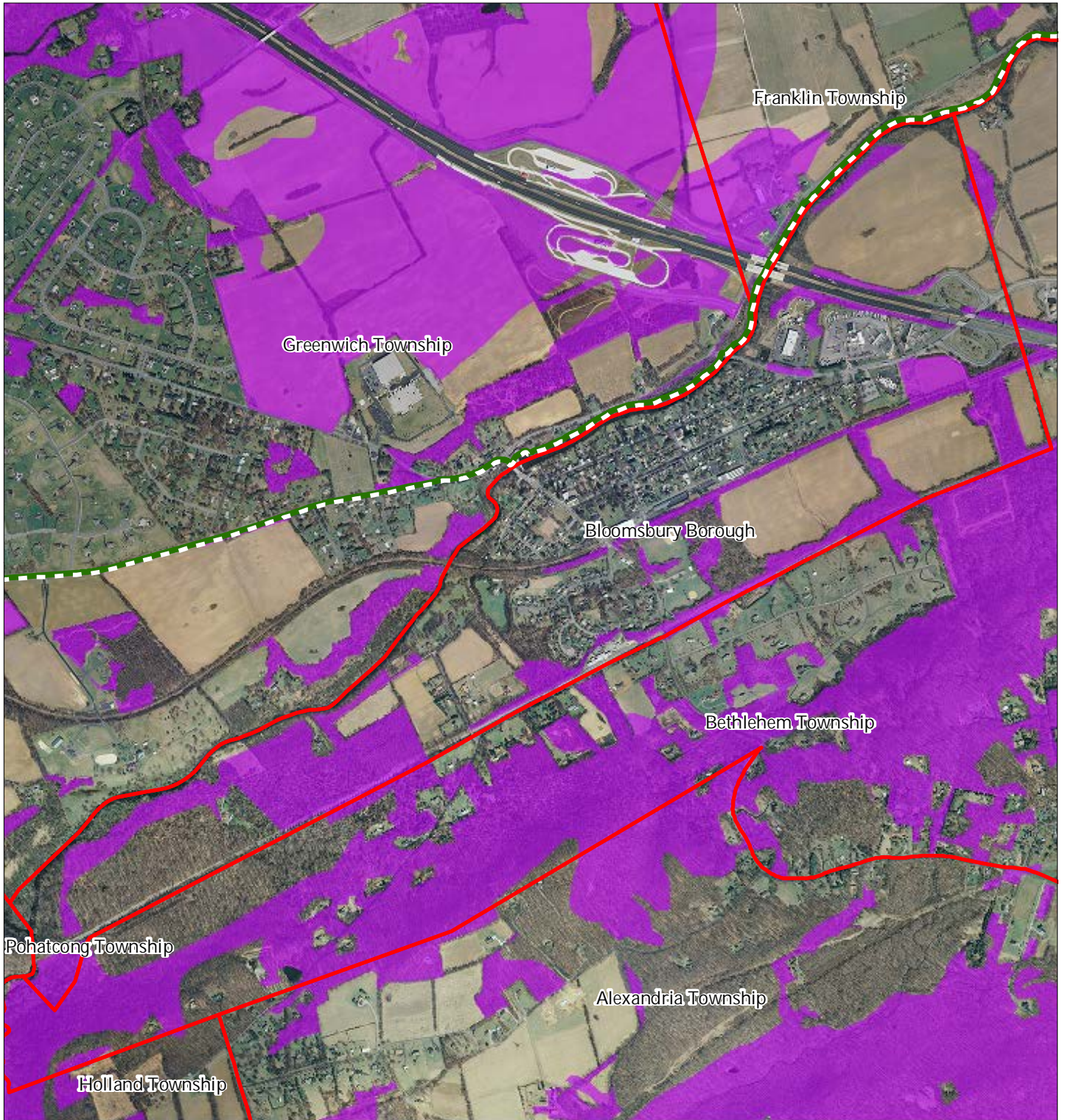





1 inch = 0.28 miles



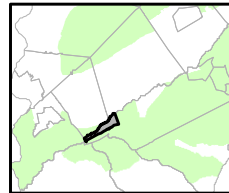
Sept 2011

Figure 21: Prime Ground Water Recharge Areas



-  Prime Groundwater Recharge Areas
-  Preservation Area
-  Municipal Boundaries

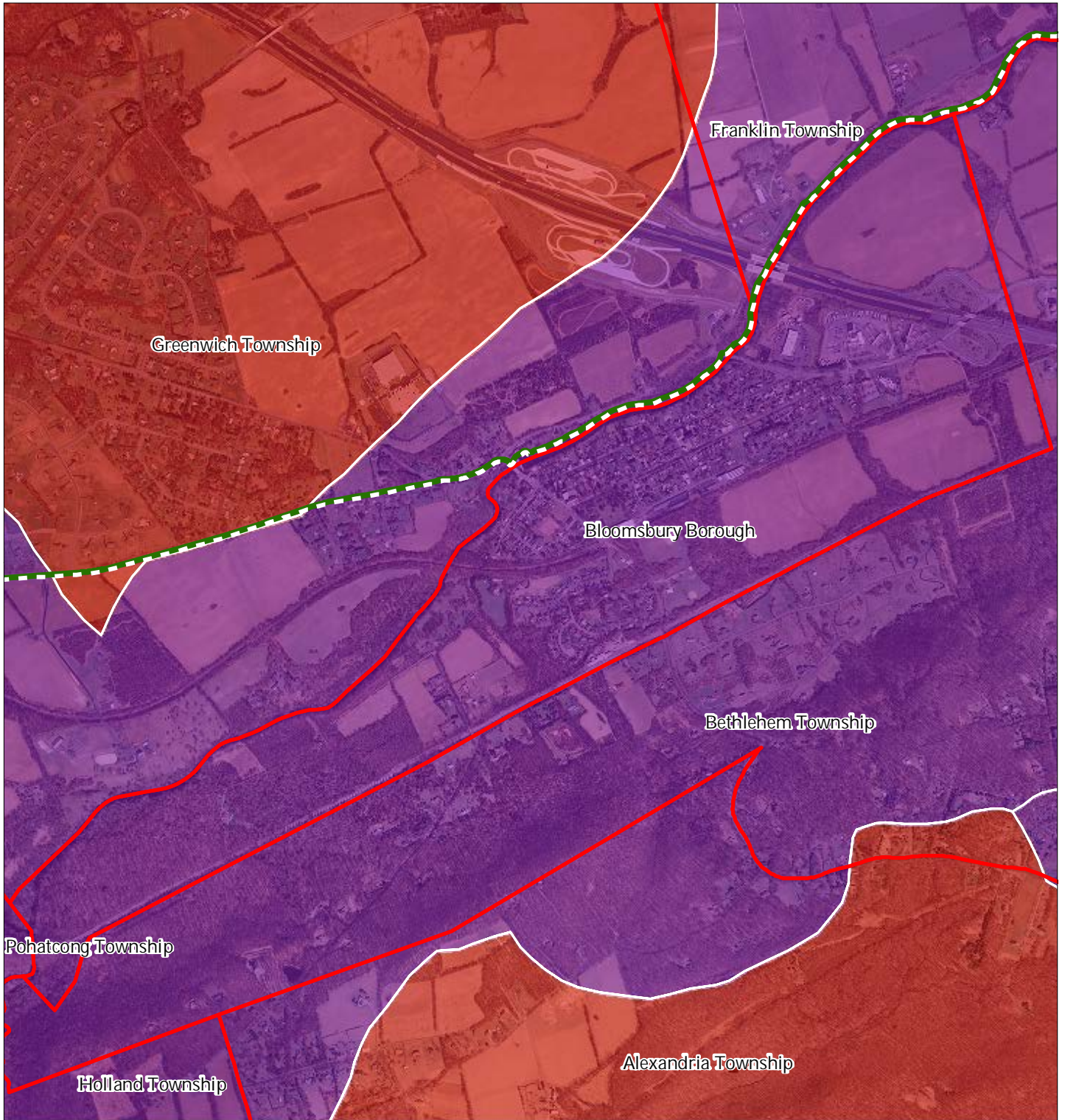
Bloomsbury Borough









1 inch = 0.28 miles



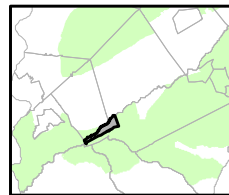
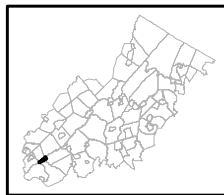
Figure 22: HUC 14s on NJDEP Impaired Waters List



Impaired Waters Overall Assessment by HUC14 Subwatershed

-  Non Impacted
-  Insufficient Data Available
-  Moderate
-  Water Quality Impaired
-  Preservation Area
-  Municipal Boundaries

Bloomsbury Borough

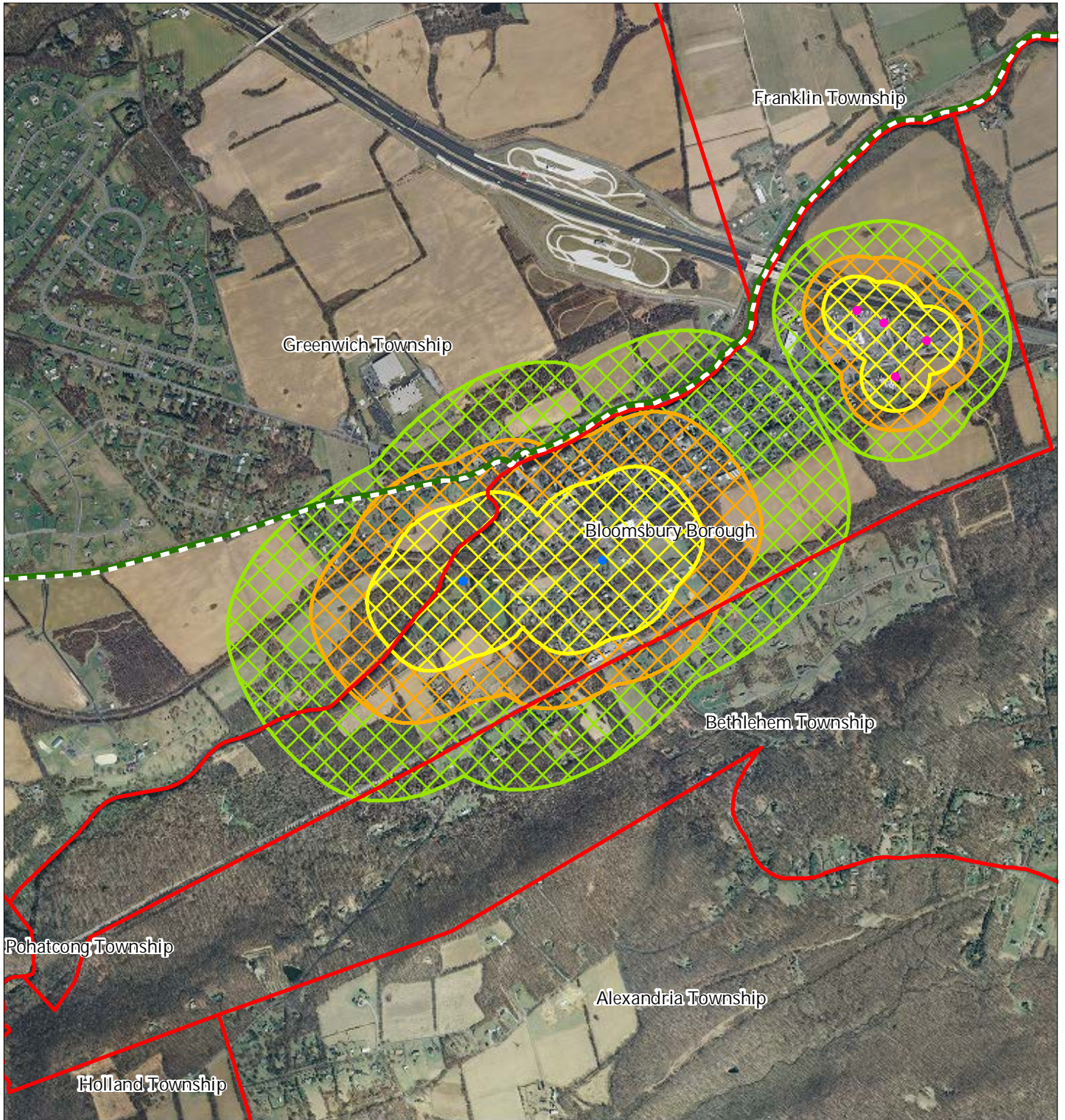


1 inch = 0.28 miles



Sept 2011



Figure 23: Wellhead Protection Areas



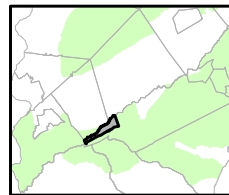
- Public Community Wells
- Public Non-Community Wells

Wellhead Protection Areas

-  2-Year Tier
-  5-Year Tier
-  12-Year Tier

-  Preservation Area
-  Municipal Boundaries

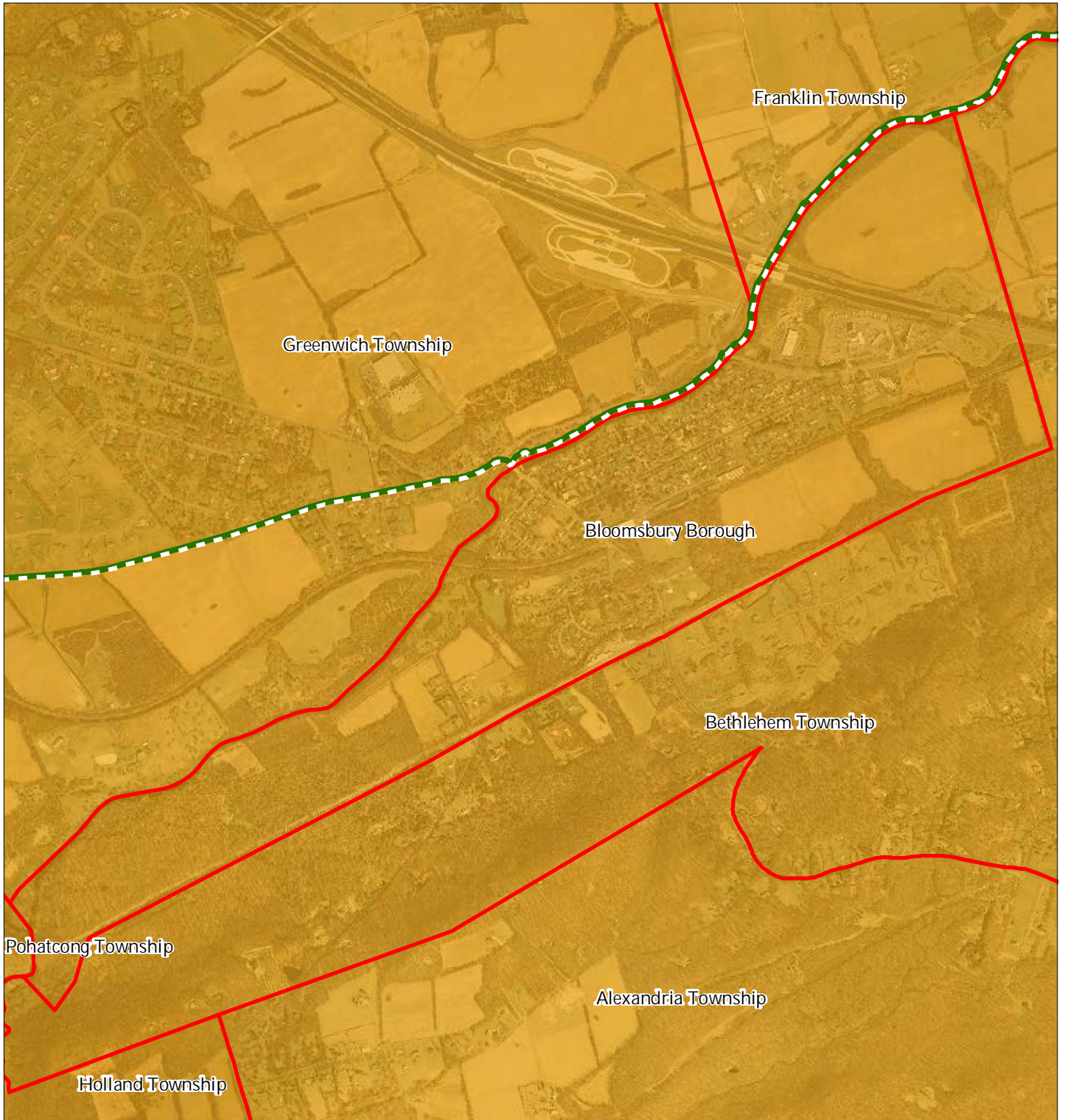
Bloomsbury Borough






1 inch = 0.28 miles

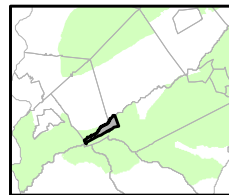
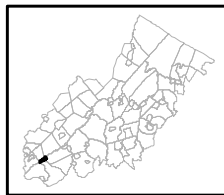


Figure 24: Agricultural Resource Area



-  Agricultural Resource Area
-  Preservation Area
-  Municipal Boundaries

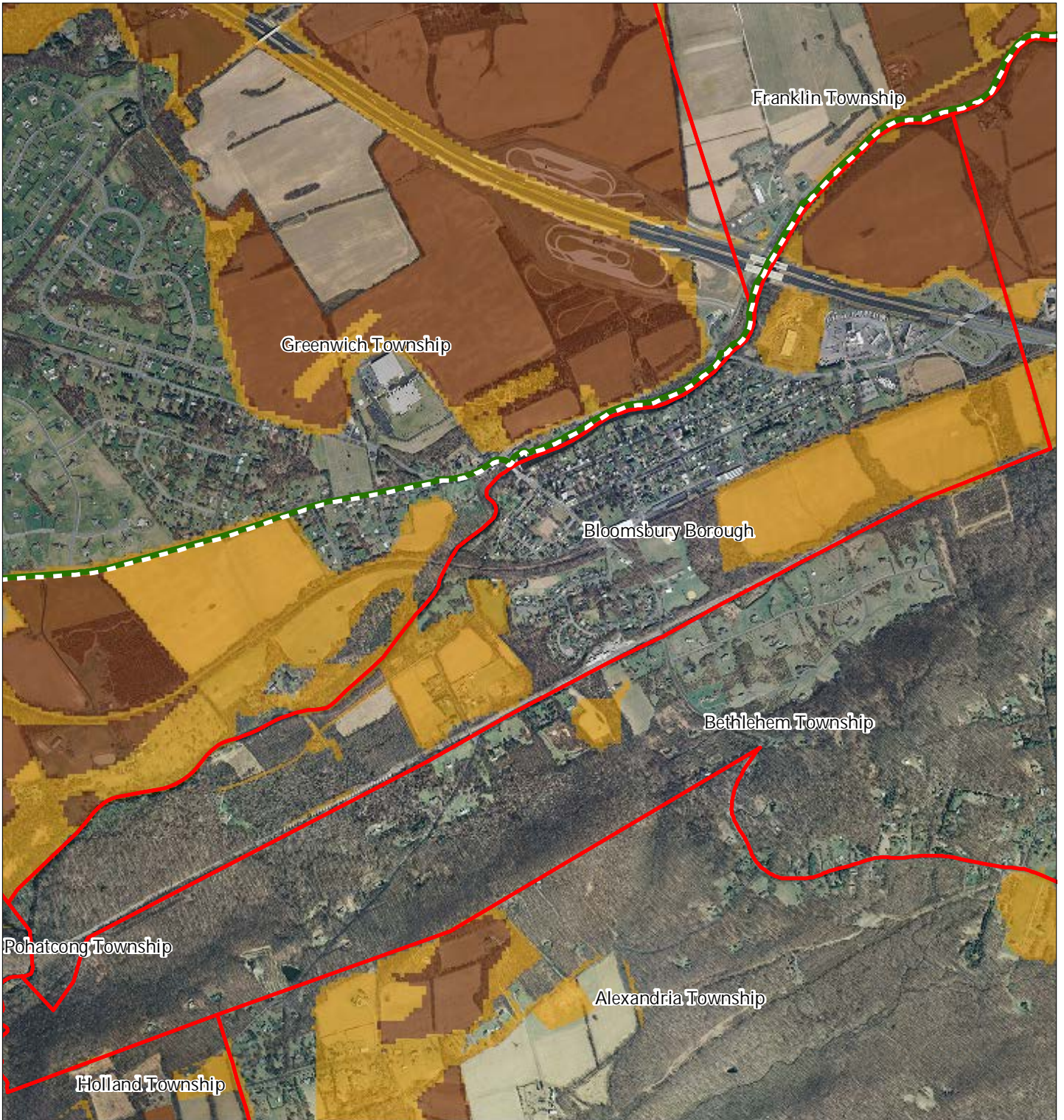
Bloomsbury Borough



1 inch = 0.28 miles



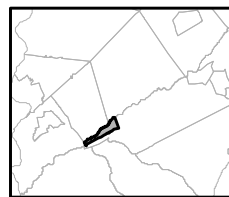
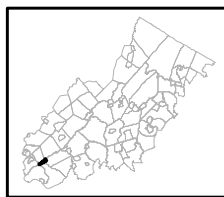
Figure 25: Agricultural Priority Area



Agricultural Priority Area

-  Moderate
-  High
-  Preservation Area
-  Municipal Boundaries

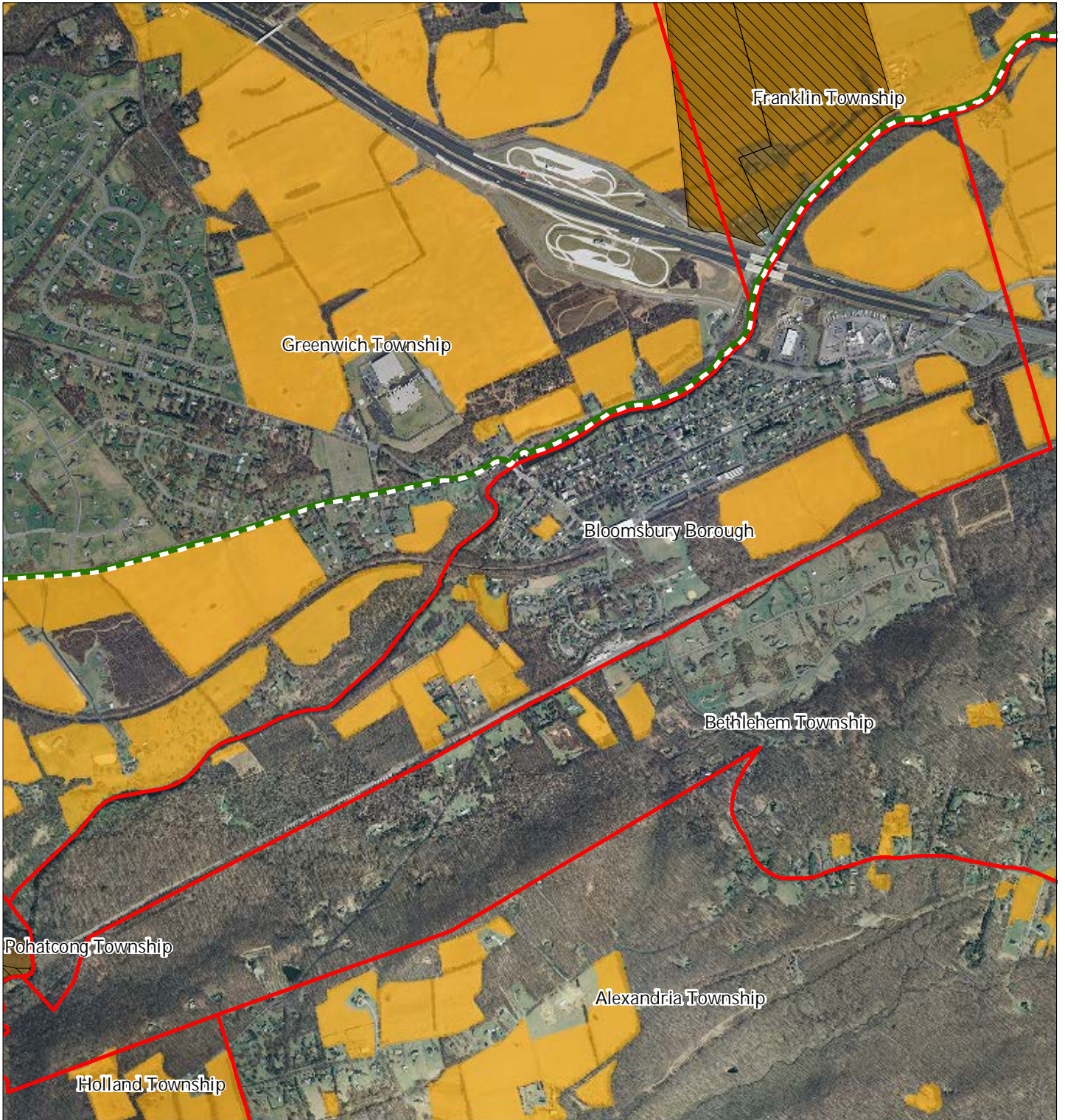
Bloomsbury Borough



1 inch = 0.28 miles



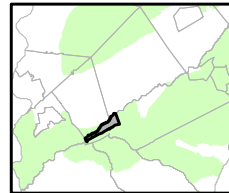
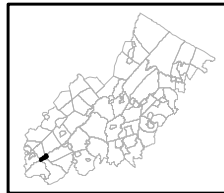
Figure 26: Preserved Farms, SADC Easements, All Agricultural Uses



SADC Easements

-  *SADC Final*
-  *SADC Preserved*
-  Preserved Farmland
-  Agriculture Uses
-  Preservation Area
-  Municipal Boundaries

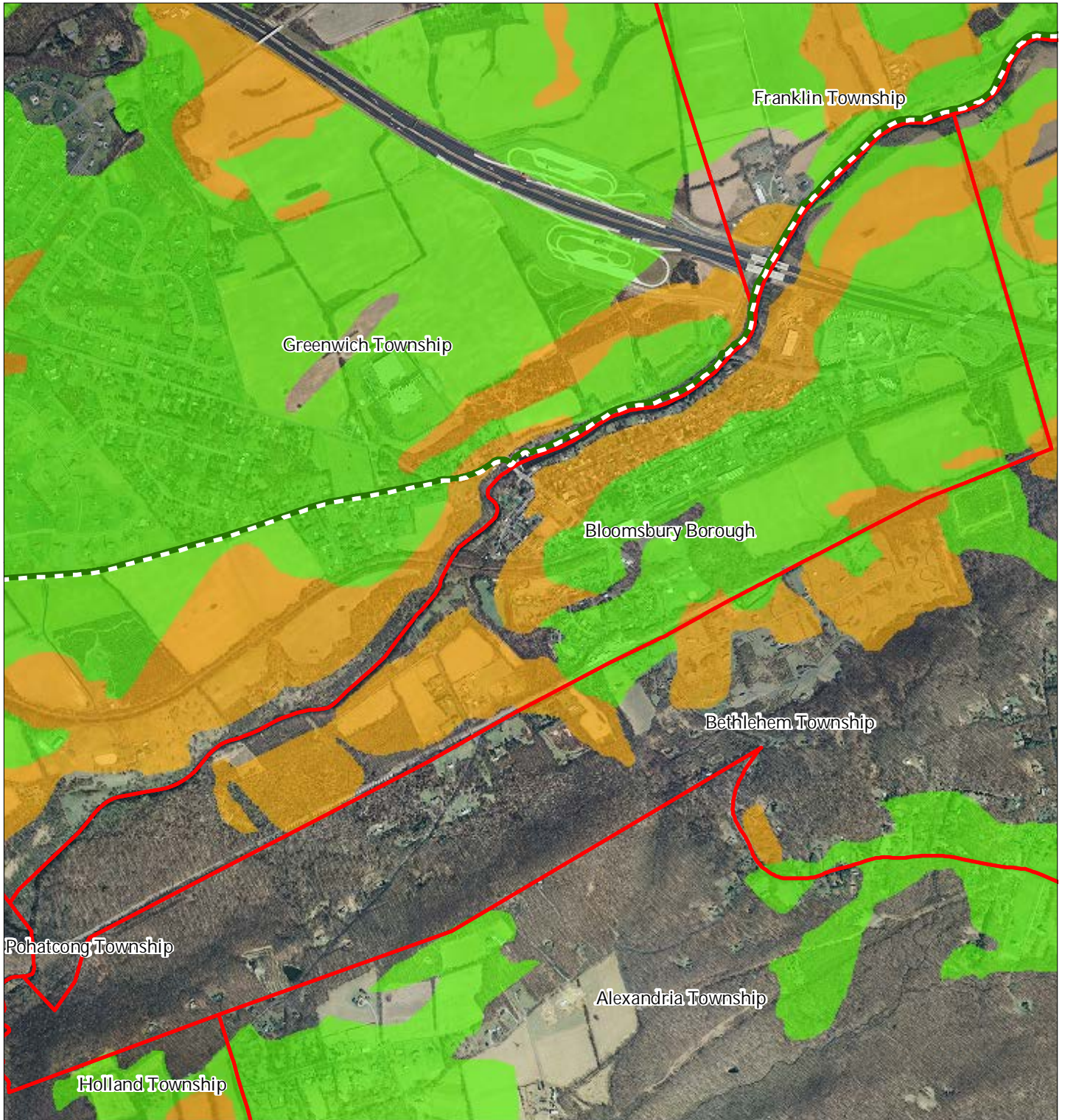
Bloomsbury Borough



1 inch = 0.28 miles



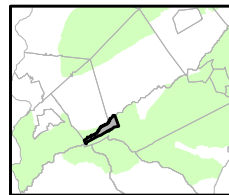
Figure 27: Important Farmland Soils



Important Farmland Soils

- Prime Farmland
- Farmland of Local Importance
- Farmland of Statewide Importance
- Farmland of Unique Importance
- Preservation Area
- Municipal Boundaries

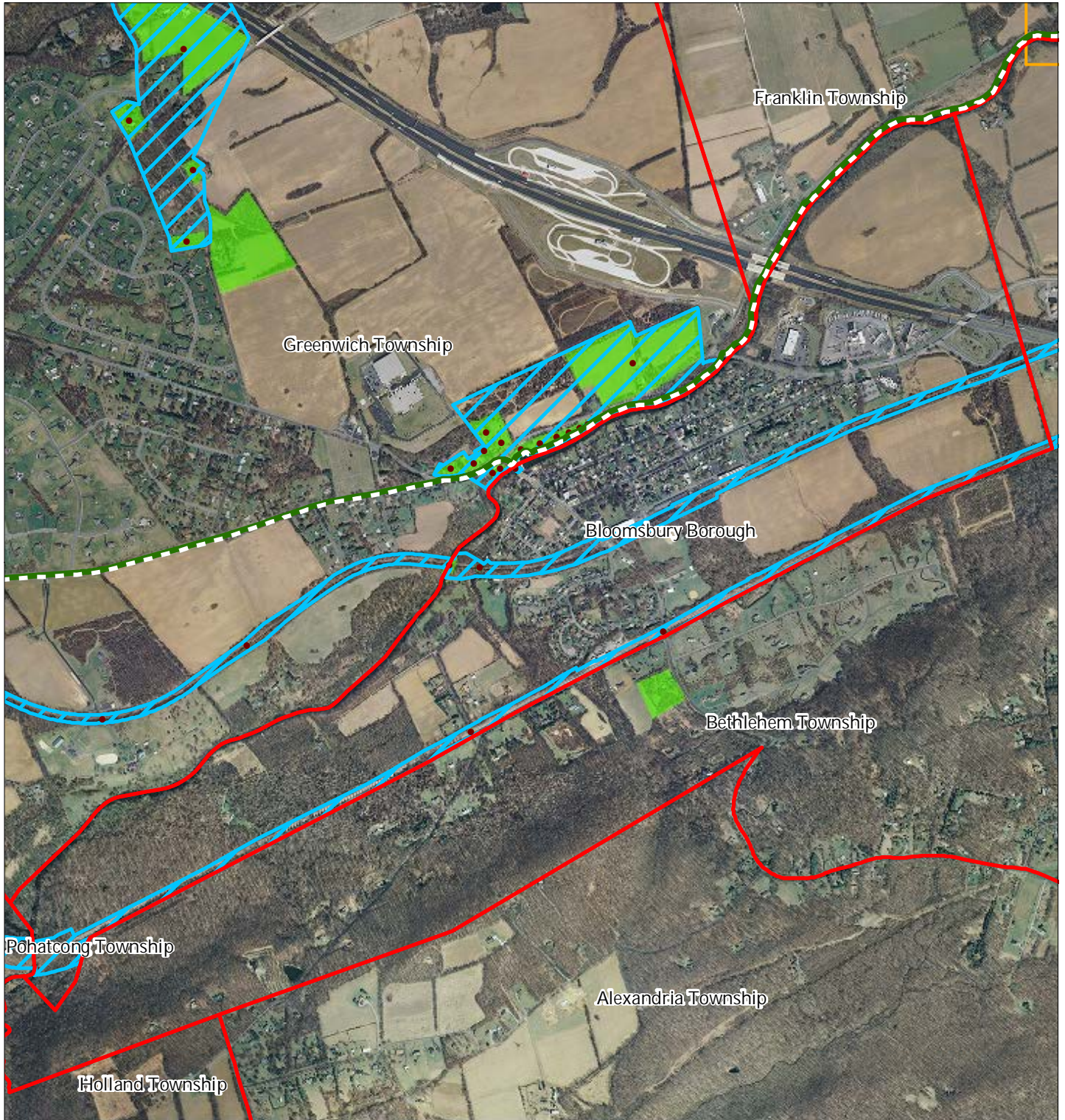
Bloomsbury Borough



1 inch = 0.28 miles

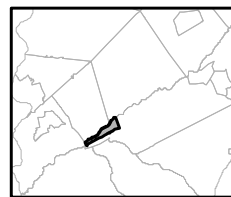
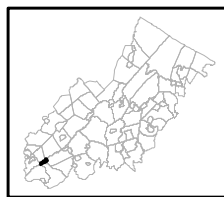


Figure 28: Historic, Cultural, and Archaeological Resources Inventory



-  Preservation Area
-  Municipal Boundaries
-  Archaeological Grids (1 sqmi)
-  NJ Historic Districts
-  Historic Property Points
-  Historic Property Polygons

Bloomsbury Borough






1 inch = 0.28 miles

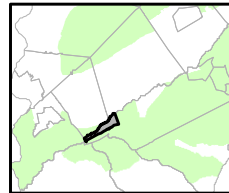


Figure 29: Baseline Scenic Resources Inventory



Bloomsbury Borough

-  Scenic Resources
-  Municipal Boundaries
-  Preservation Area



1 inch = 0.28 miles



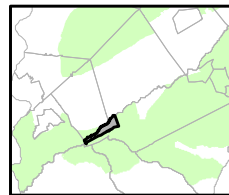
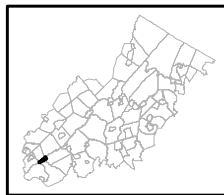
Figure 30: Highlands Contaminated Site Inventory



Highlands Contaminated Site Inventory

- Tier 1 Sites
- Tier 1 Sites (Polygons)
- Tier 2 Sites
- Preservation Area
- Municipal Boundaries

Bloomsbury Borough






1 inch = 0.28 miles

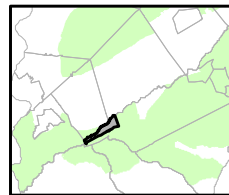
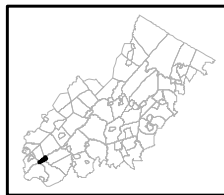


Figure 31: Public Community Water Systems



-  Public Community Water Systems
-  Preservation Area
-  Municipal Boundaries

Bloomsbury Borough



1 inch = 0.28 miles




Figure 33: Highlands Roadway Network




Roadway Network

 Interstate Highways

 U.S. Routes

 State Routes

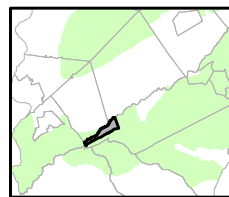
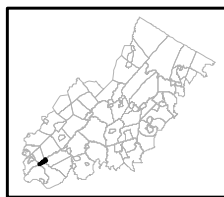
 County Routes

 Local Routes

 Preservation Area

 Municipal Boundaries

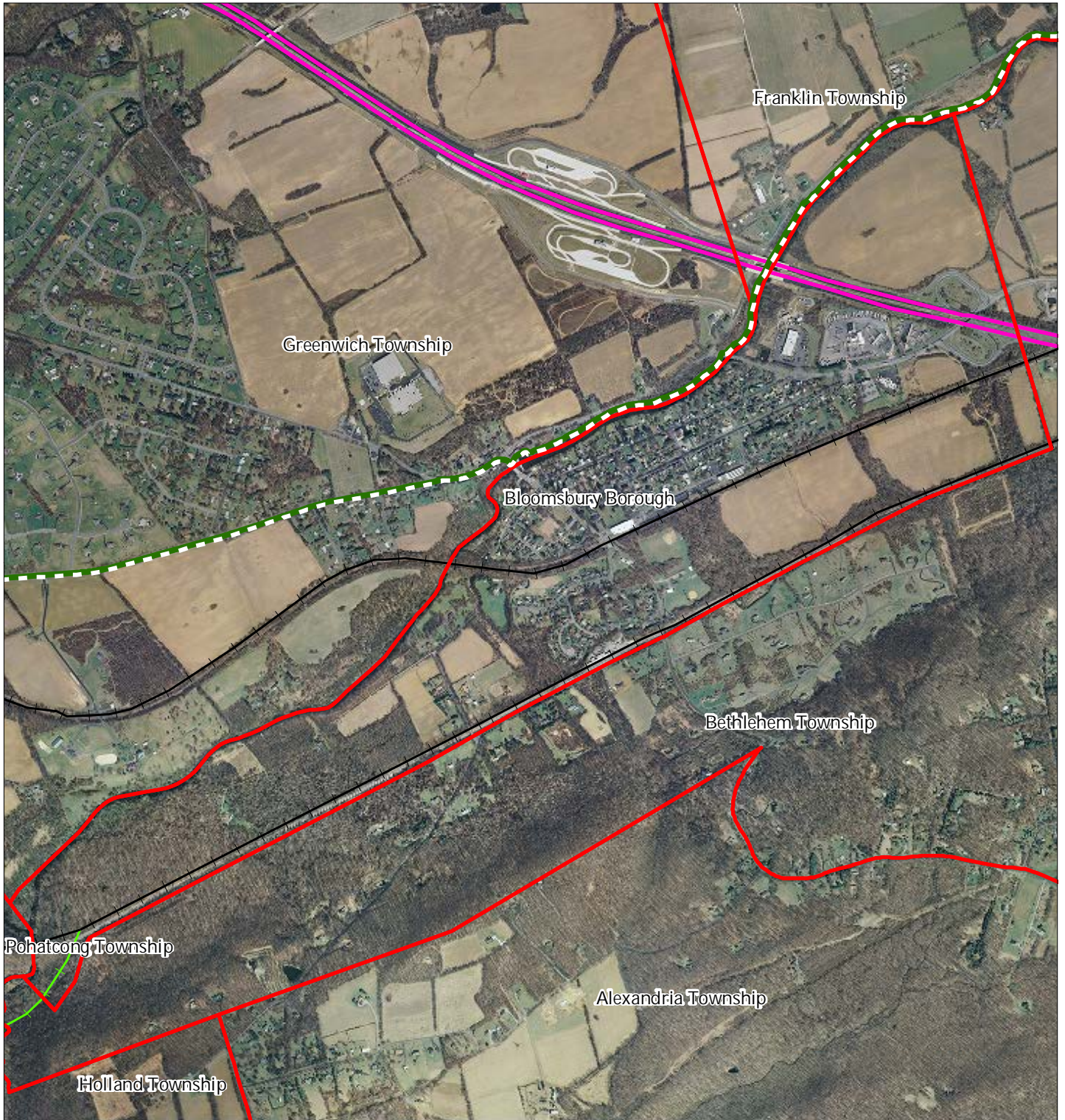
Bloomsbury Borough



1 inch = 0.28 miles

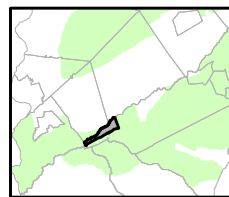
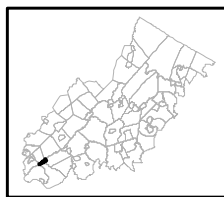


Figure 34: Highlands Transit Network



- | | |
|----------------------------------|------------------------|
| Rail Network | ● Rail Stations |
| — Boonton Line | ● Park and Ride Sites |
| — Main Line & Bergen County Line | — Private Bus Lines |
| — Morris and Essex Line | — NJ Transit Bus Lines |
| — Raritan Valley Line | ✈ Airports |
| Freight Rail Lines | |
| — Freight Rail Lines | |
| — Abandoned Freight Rail | |

Bloomsbury Borough



1 inch = 0.28 miles

