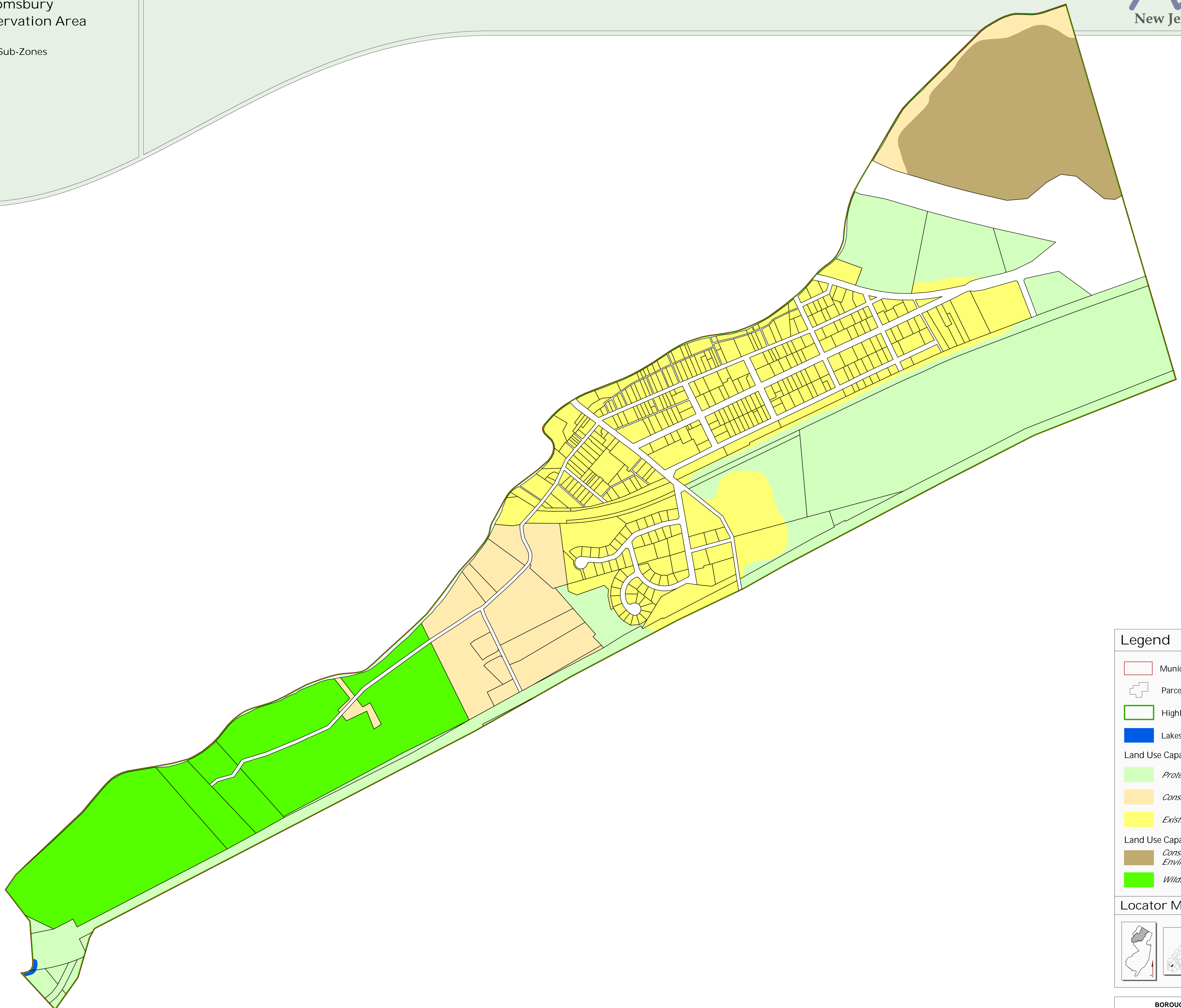


Exhibit 1:

Borough of Bloomsbury
Highlands Preservation Area

Highlands Zones and Sub-Zones

BOROUGH OF BLOOMSBURY, HUNTERDON COUNTY, NJ



Legend

- Municipal Boundary
- Parcel Boundaries
- Highlands Preservation Area
- Lakes Greater Than 10 Acres
- Land Use Capability Zone
 - Protection
 - Conservation
 - Existing Community
- Land Use Capability Sub-Zone
 - Conservation Environmentally Constrained
 - Wildlife Management

Locator Maps

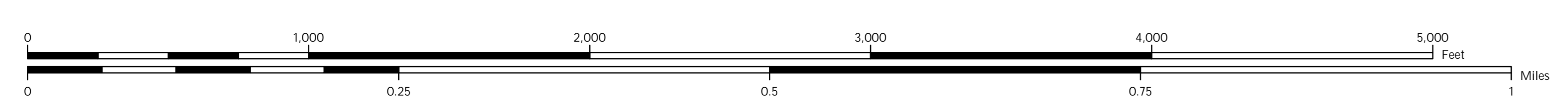
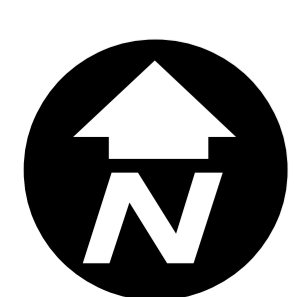
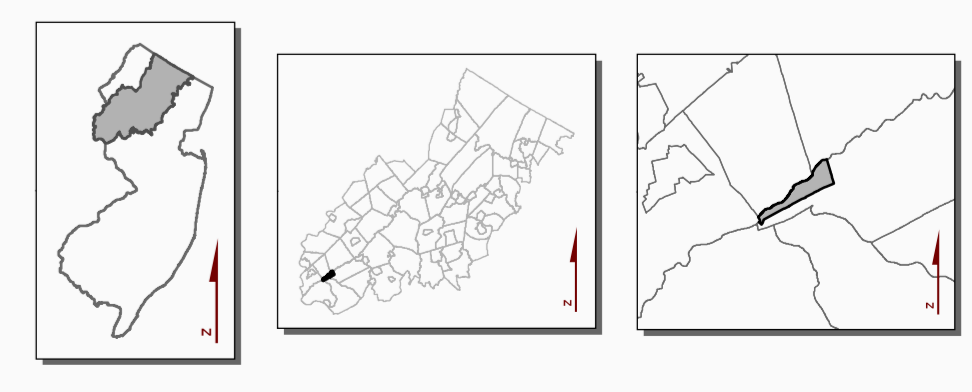
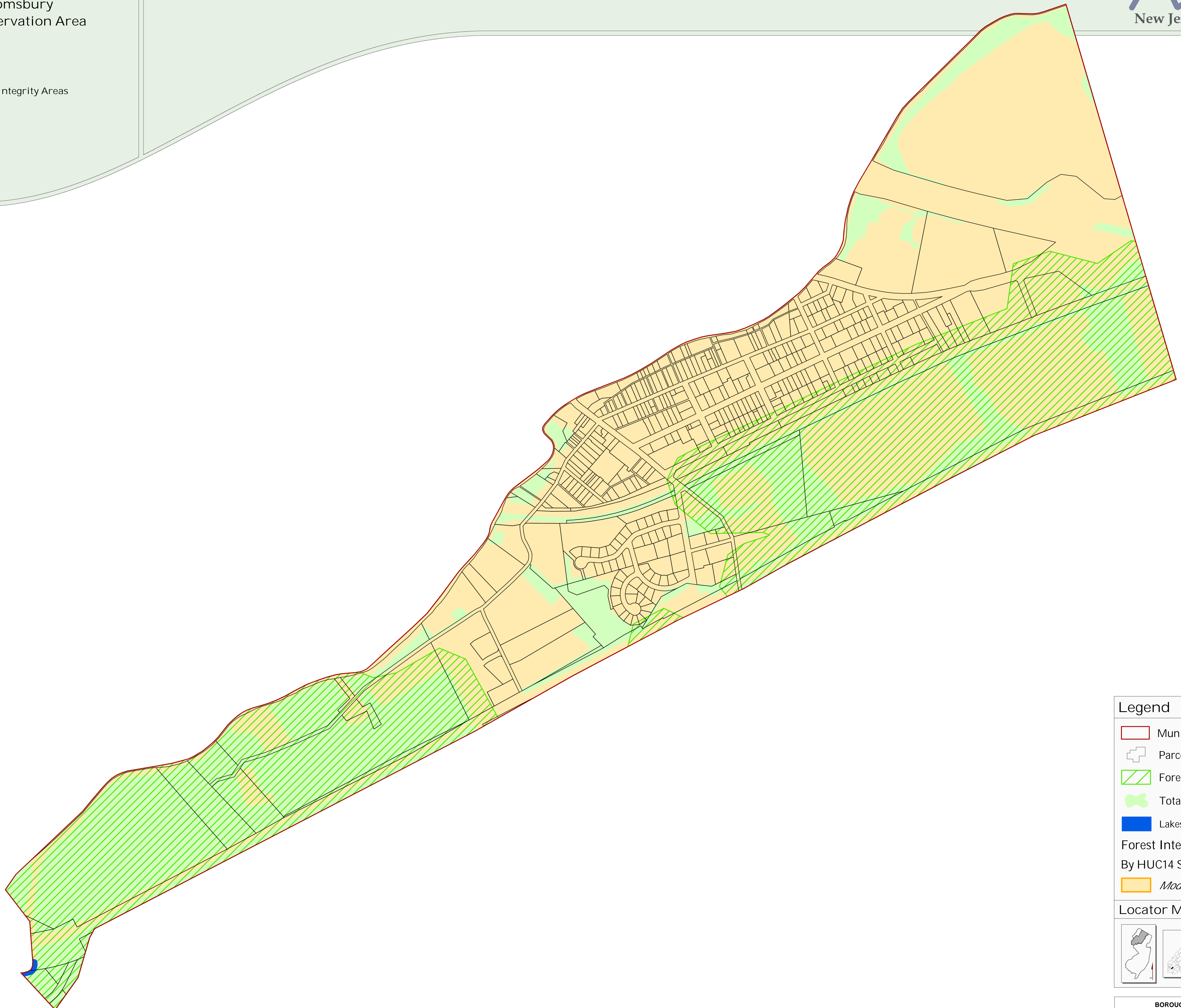


Exhibit 2:

Borough of Bloomsbury
Highlands Preservation Area

Forest Resource Area
Total Forest Area
Forest Subwatershed Integrity Areas

BOROUGH OF BLOOMSBURY, HUNTERDON COUNTY, NJ



Legend

- Municipal Boundary
- Parcel Boundaries
- Forest Resource Area
- Total Forest Area
- Lakes Greater Than 10 Acres

Forest Integrity
By HUC14 Subwatershed

- Moderate

Locator Maps

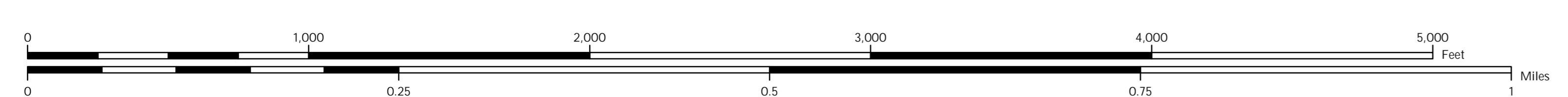
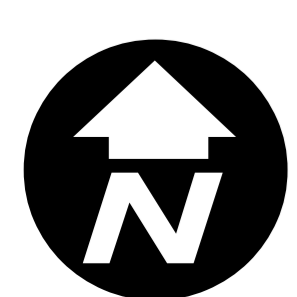
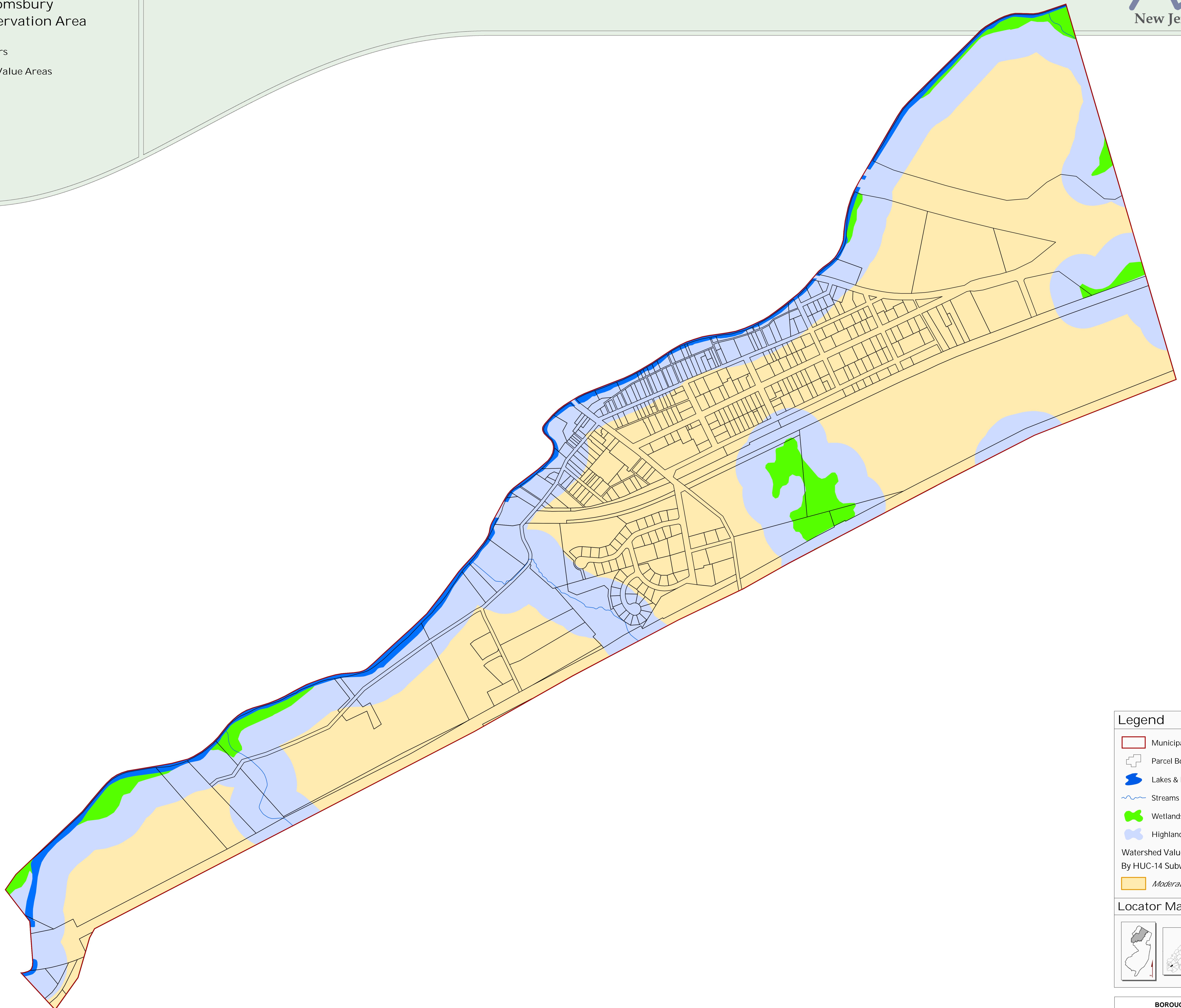


Exhibit 3:

Borough of Bloomsbury
Highlands Preservation Area

Highlands Open Waters
Watershed Resource Value Areas

BOROUGH OF BLOOMSBURY, HUNTERDON COUNTY, NJ



Legend

- Municipal Boundary
- Parcel Boundaries
- Lakes & Ponds
- Streams
- Wetlands
- Highlands Open Water Buffers (300ft)

Watershed Values
By HUC-14 Subwatershed

- Moderate

Locator Maps

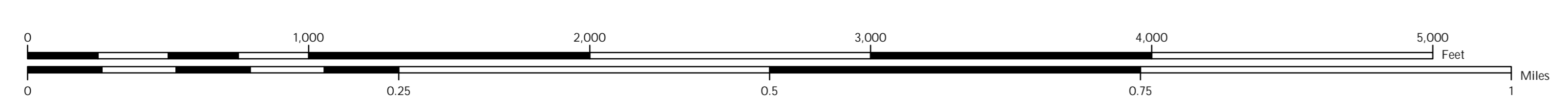
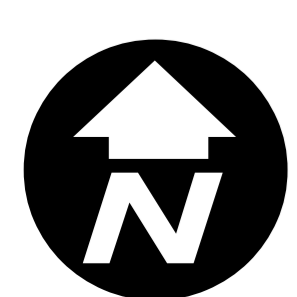
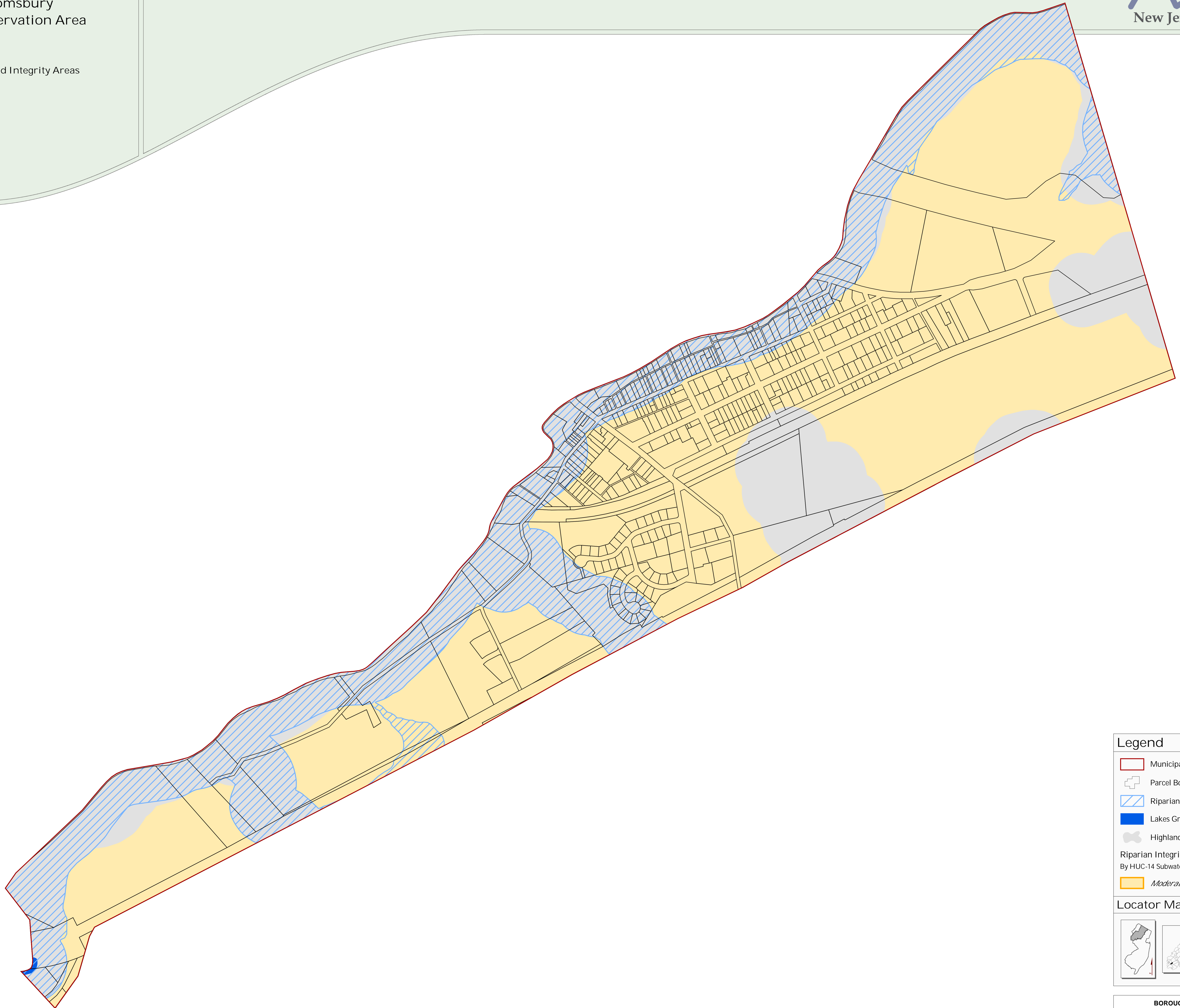


Exhibit 4:

Borough of Bloomsbury
Highlands Preservation Area

Riparian Area
Riparian Subwatershed Integrity Areas

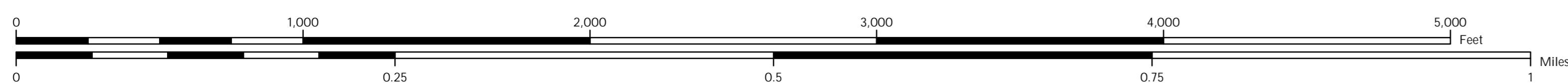
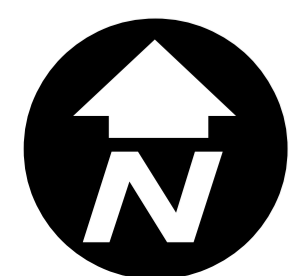
BOROUGH OF BLOOMSBURY, HUNTERDON COUNTY, NJ



Legend

- Municipal Boundary
- Parcel Boundaries
- Riparian Area
- Lakes Greater Than 10 Acres
- Highlands Open Water Buffers (300ft)
- Riparian Integrity
By HUC-14 Subwatershed
- Moderate

Locator Maps



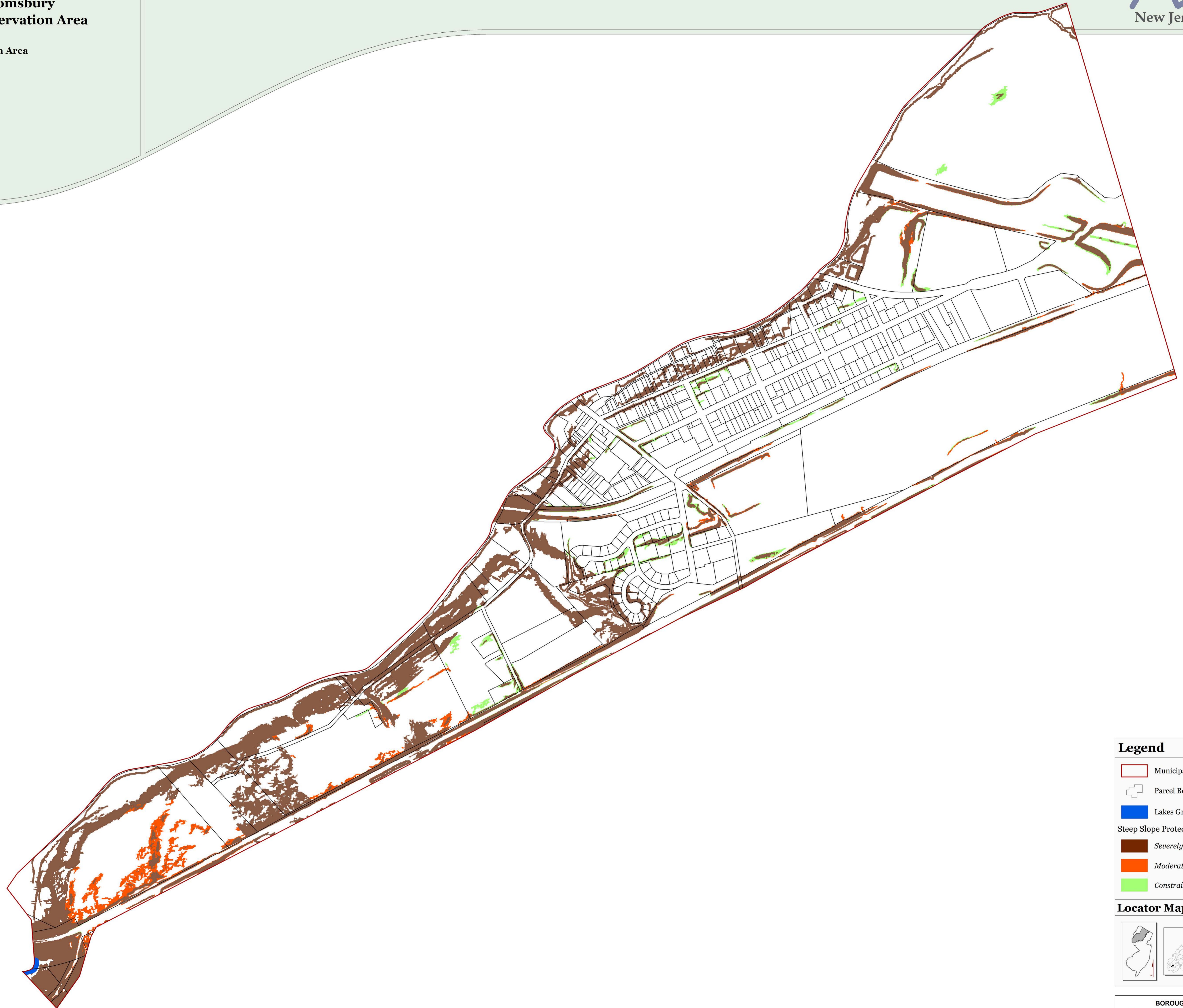
BOROUGH OF
BLOOMSBURY
HUNTERDON COUNTY, N.J.
MAP PREPARED BY THE NEW JERSEY
HIGHLANDS COUNCIL, AUGUST 17, 2011

Exhibit 5:

**Borough of Bloomsbury
Highlands Preservation Area**

Steep Slope Protection Area

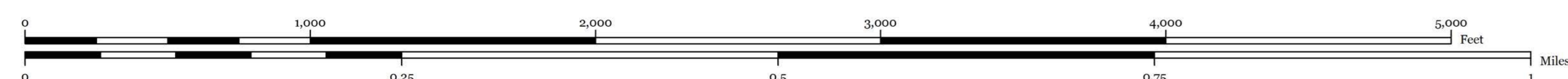
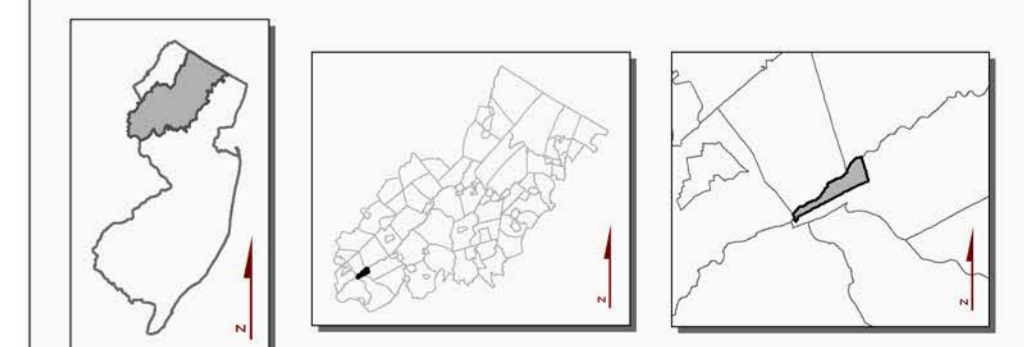
BOROUGH OF BLOOMSBURY, HUNTERDON COUNTY, NJ



Legend

- Municipal Boundary
- Parcel Boundaries
- Lakes Greater Than 10 Acres
- Steep Slope Protection Area**
- Severely Constrained*
- Moderately Constrained*
- Constrained/Limited Constrained*

Locator Maps



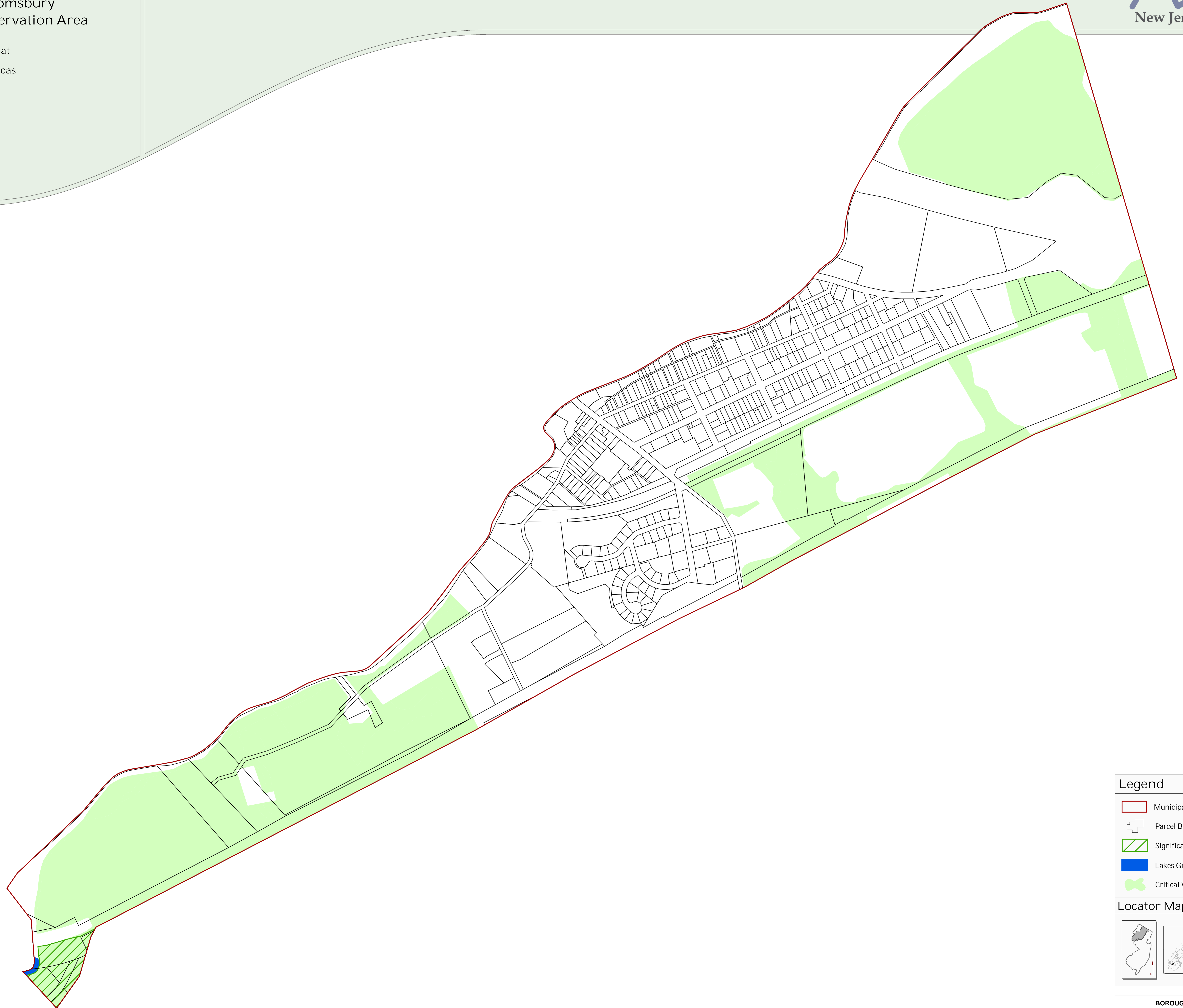
BOROUGH OF BLOOMSBURY
HUNTERDON COUNTY, N.J.
MAP PREPARED BY THE NEW JERSEY
HIGHLANDS COUNCIL, AUGUST 17, 2011

Exhibit 6:

Borough of Bloomsbury
Highlands Preservation Area

Critical Wildlife Habitat
Significant Natural Areas

BOROUGH OF BLOOMSBURY, HUNTERDON COUNTY, NJ



Legend

- Municipal Boundary
- Parcel Boundaries
- Significant Natural Areas
- Lakes Greater Than 10 Acres
- Critical Wildlife Habitat

Locator Maps

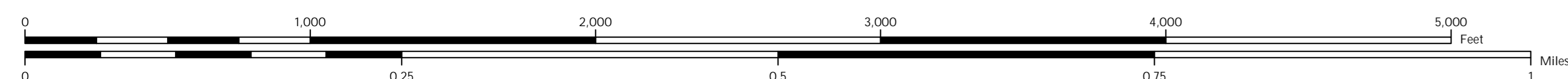
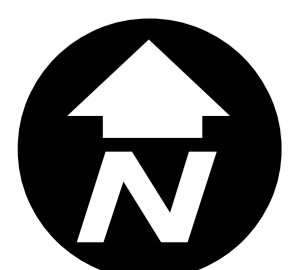
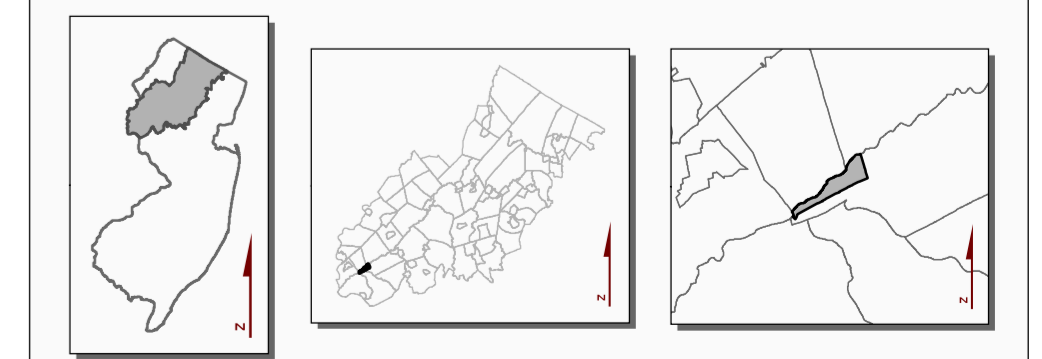
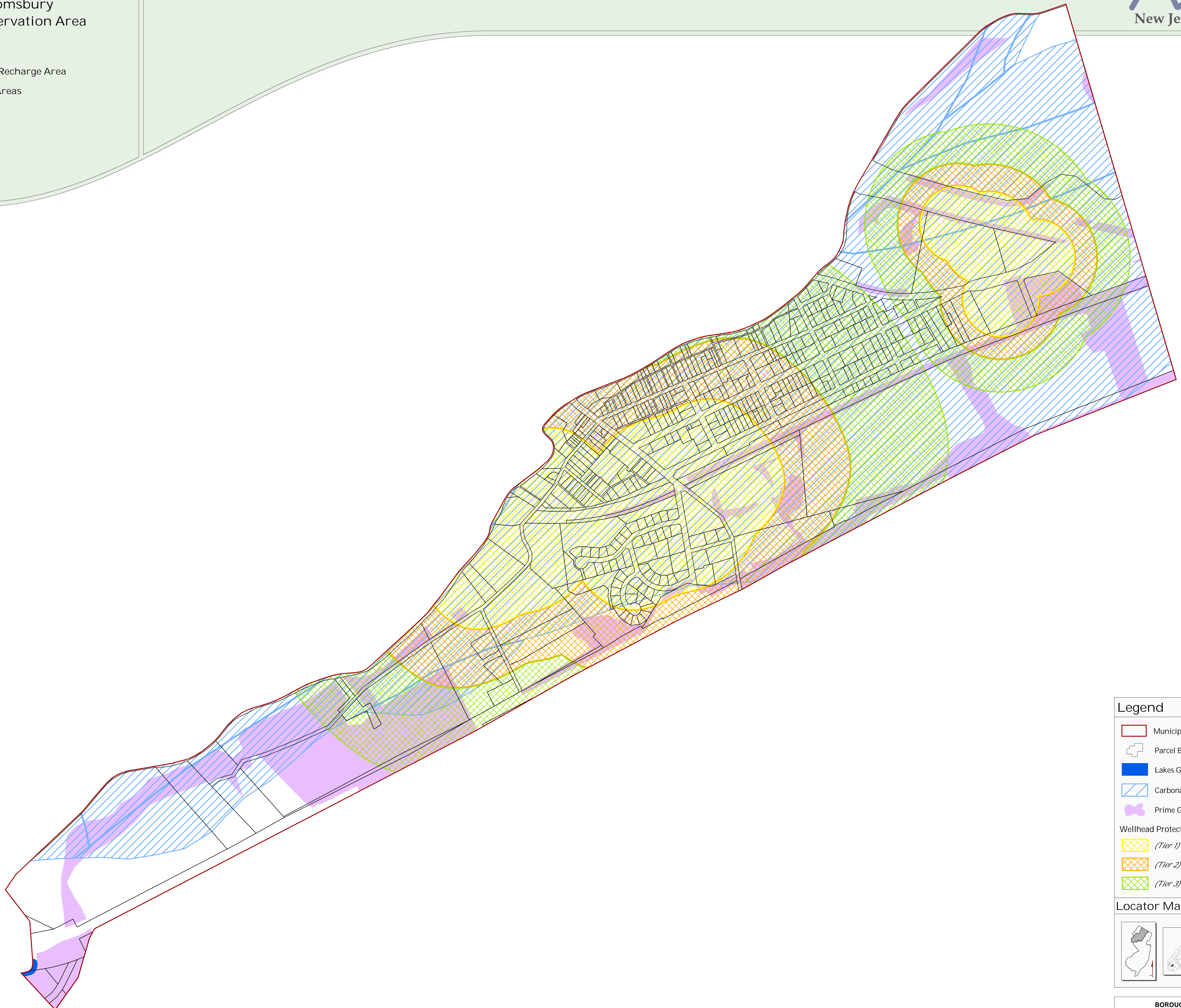


Exhibit 7:

Borough of Bloomsbury
Highlands Preservation Area

Carbonate Rock Area
Prime Ground Water Recharge Area
Wellhead Protection Areas

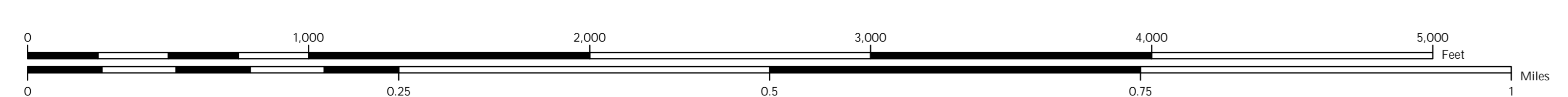
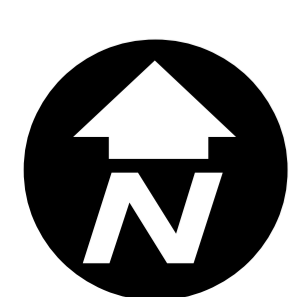
BOROUGH OF BLOOMSBURY, HUNTERDON COUNTY, NJ



Legend

- Municipal Boundary
- Parcel Boundaries
- Lakes Greater Than 10 Acres
- Carbonate Rock Areas
- Prime Ground Water Recharge Areas
- Wellhead Protection Areas
 - (Tier 1) 2-Year
 - (Tier 2) 5-Year
 - (Tier 3) 12-Year

Locator Maps



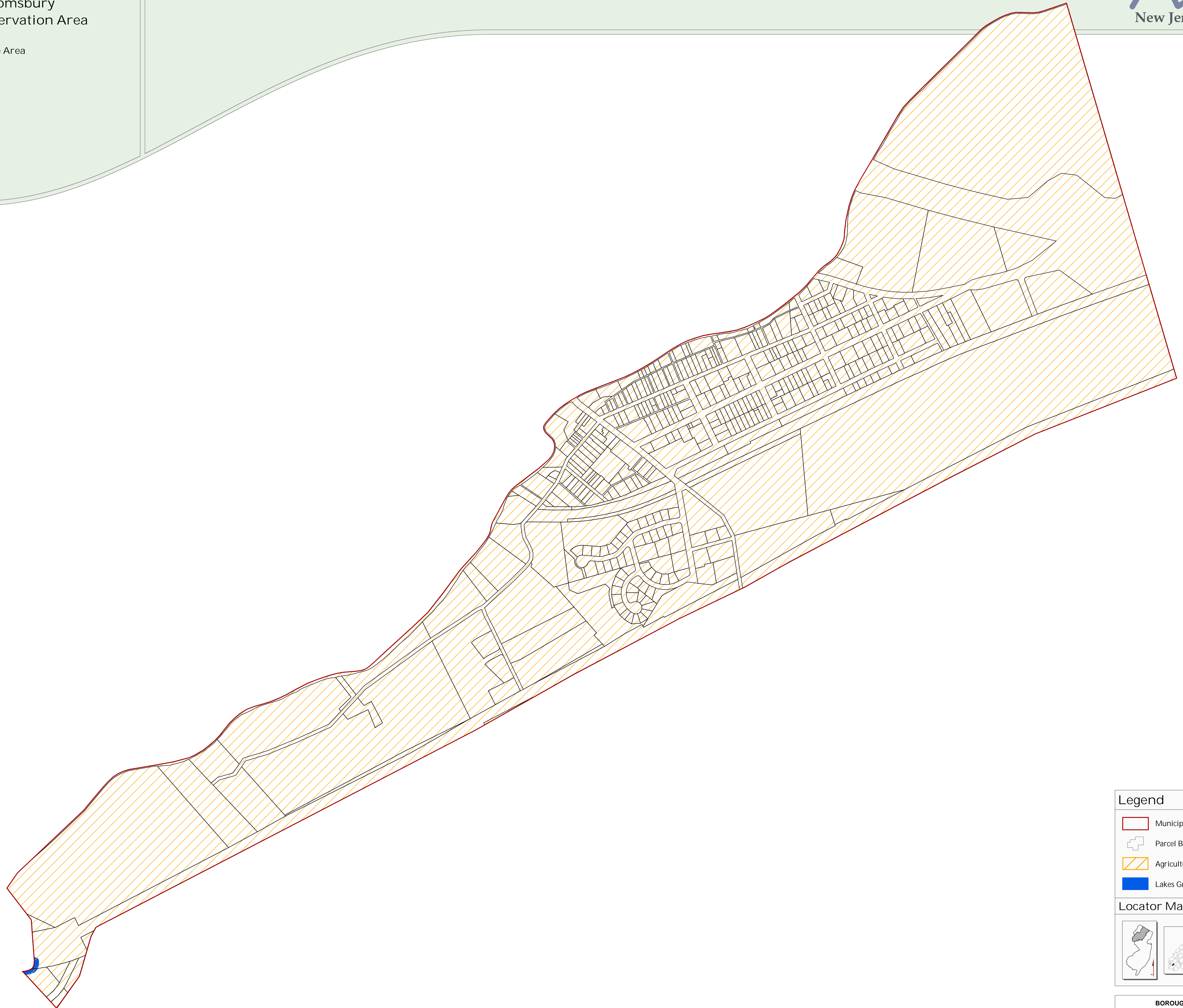
BOROUGH OF
BLOOMSBURY
HUNTERDON COUNTY, N.J.
MAP PREPARED BY THE NEW JERSEY
HIGHLANDS COUNCIL, AUGUST 17, 2011

Exhibit 8:

Borough of Bloomsbury
Highlands Preservation Area

Agricultural Resource Area

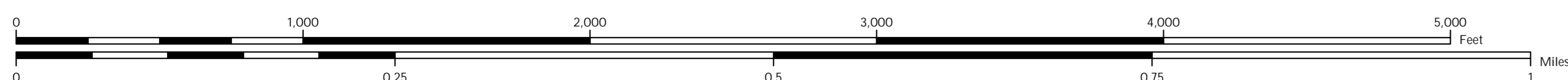
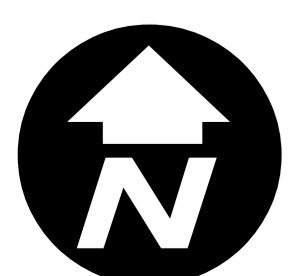
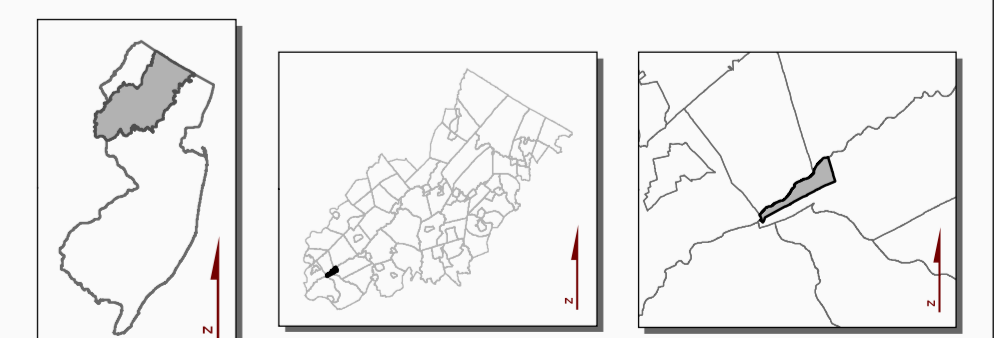
BOROUGH OF BLOOMSBURY, HUNTERDON COUNTY, NJ



Legend

- Municipal Boundary
- Parcel Boundaries
- Agricultural Resource Area
- Lakes Greater Than 10 Acres

Locator Maps



BOROUGH OF
BLOOMSBURY
HUNTERDON COUNTY, N.J.

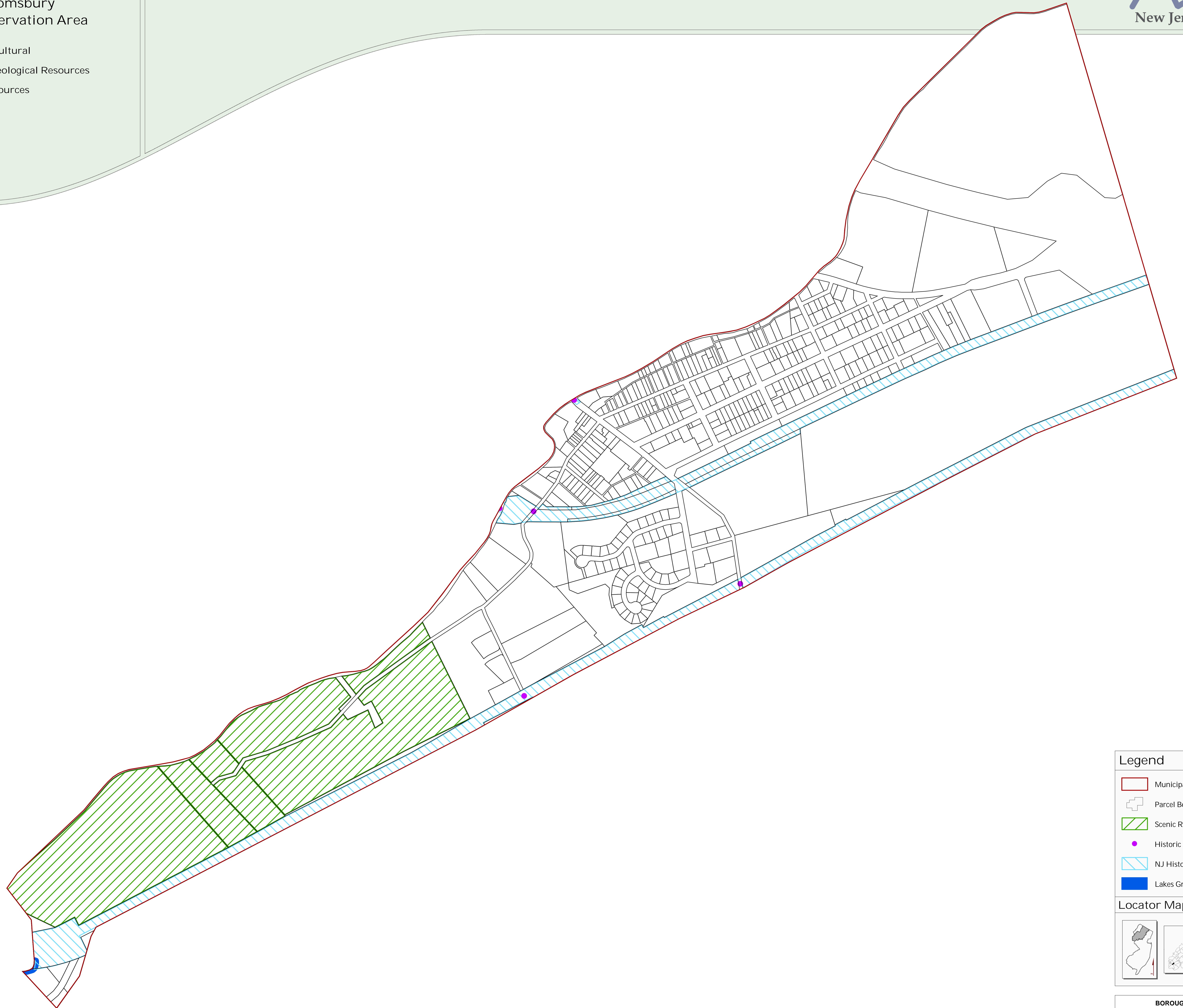
MAP PREPARED BY THE NEW JERSEY
HIGHLANDS COUNCIL, AUGUST 17, 2010

Exhibit 9:

Borough of Bloomsbury
Highlands Preservation Area

Highlands Historic, Cultural
and Archaeological Resources
Highlands Scenic Resources

BOROUGH OF BLOOMSBURY, HUNTERDON COUNTY, NJ



Legend

- Municipal Boundary
- Parcel Boundaries
- Scenic Resources
- Historic Properties
- NJ Historic Districts
- Lakes Greater Than 10 Acres

Locator Maps

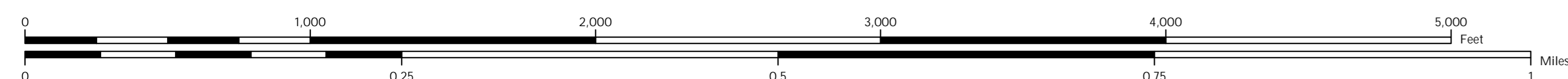
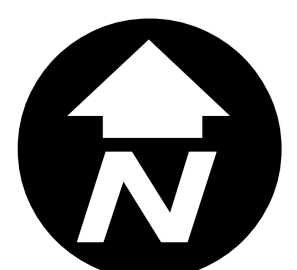
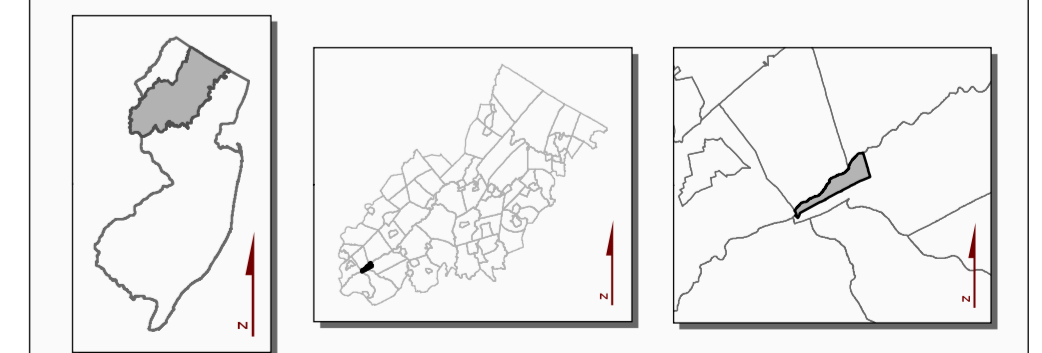
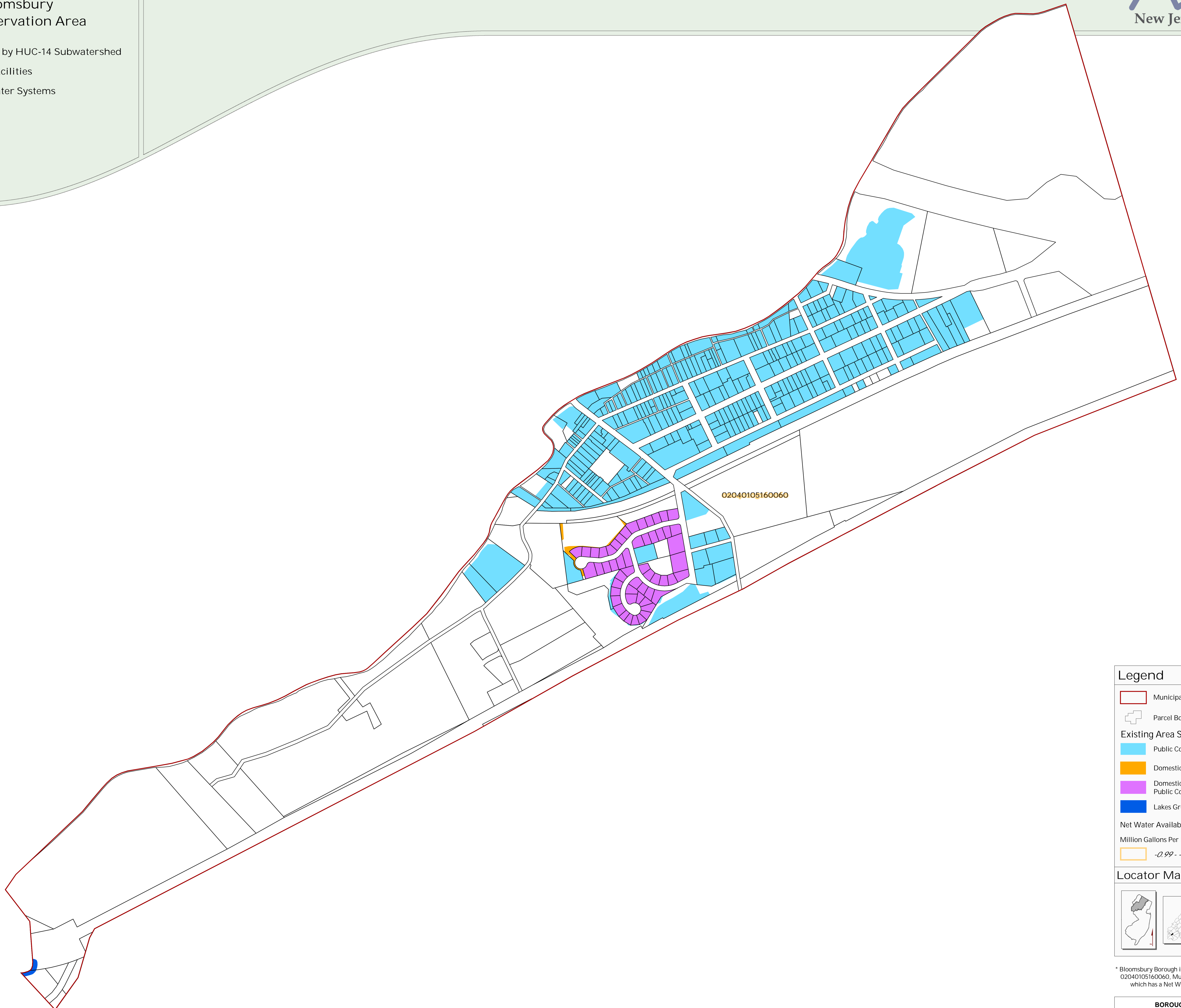


Exhibit 10:

Borough of Bloomsbury
Highlands Preservation Area

Net Water Availability by HUC-14 Subwatershed
Domestic Sewerage Facilities
Public Community Water Systems

BOROUGH OF BLOOMSBURY, HUNTERDON COUNTY, NJ



Legend

- Municipal Boundary
- Parcel Boundaries

Existing Area Served for:

- Public Community Water Systems
- Domestic Sewerage Facilities
- Domestic Sewerage Facilities and Public Community Water Systems
- Lakes Greater Than 10 Acres

Net Water Availability By HUC14 Subwatershed*
Million Gallons Per Day (MGD)

- 0.99 - -0.10

Locator Maps

* Bloomsbury Borough is entirely within HUC14 Subwatershed 02040105160060, Musconetcong R (Warren Glen to I-78), which has a Net Water Availability of -0.1654 MGD.

