

Exhibit A: Land Use Capability Map Zones



Regional Master Plan Overlay Zone Designation

- | | |
|--|-----------------------------|
| Protection | Lakes Greater Than 10 acres |
| Conservation | Preservation Area |
| Existing Community | Municipal Boundaries |
| Sub-Zone | |
| Existing Community Environmentally Constrained | |
| Conservation Environmentally Constrained | |
| Lake Community | |
| Wildlife Management | |

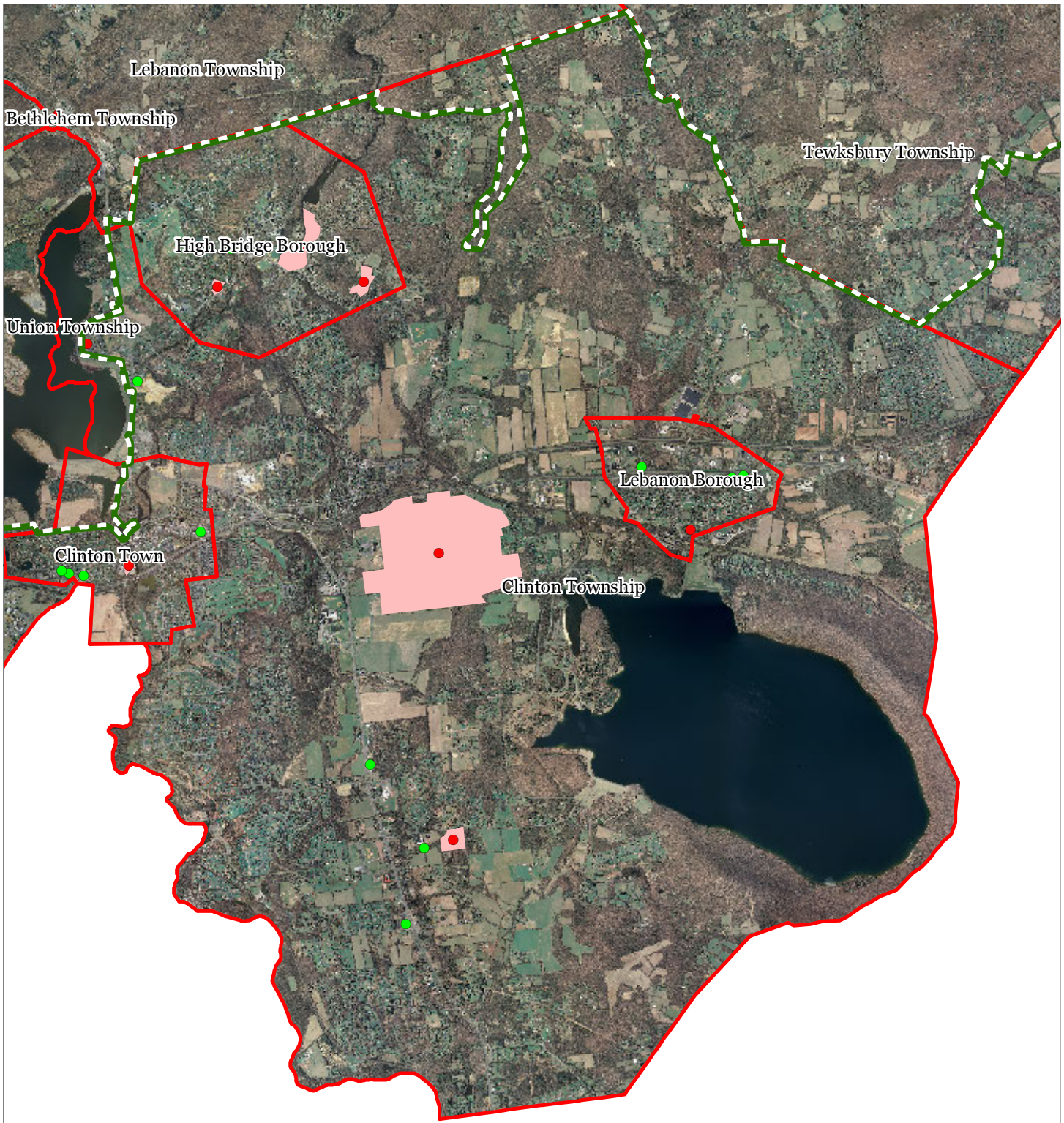
Clinton Township



1 inch = 0.956 miles



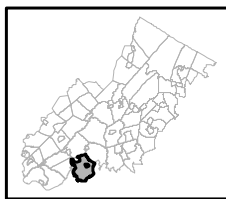
Exhibit C: Highlands Contaminated Site Inventory



Highlands Contaminated Site Inventory

- Tier 1 Sites
- Tier 1 Sites (Polygons)
- Tier 2 Sites
- Preservation Area
- Municipal Boundaries

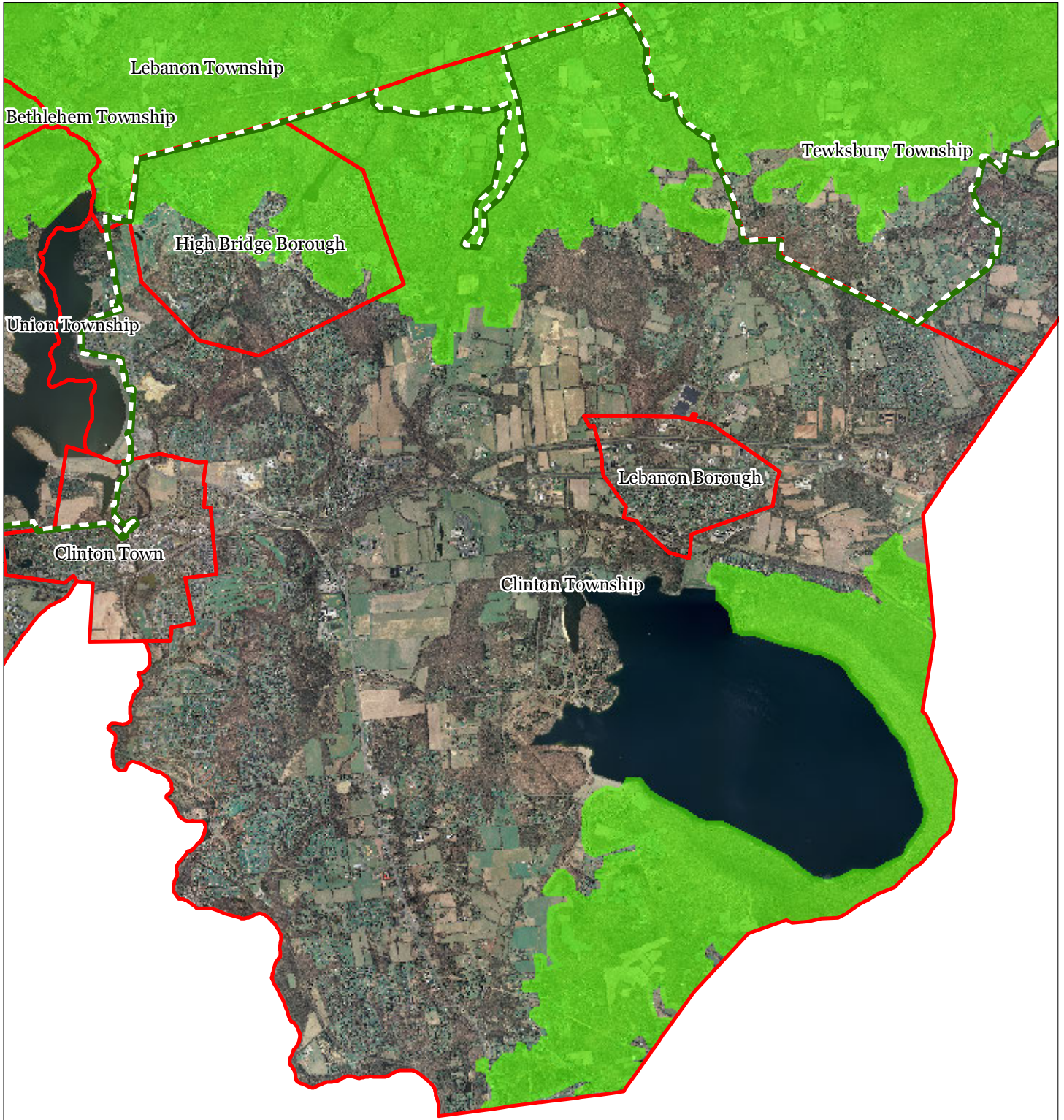
Clinton Township






1 inch = 0.956 miles

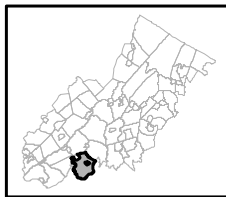


Exhibit E: Forest Resource Area



-  Forest Resource Area
-  Preservation Area
-  Municipal Boundaries

Clinton Township






1 inch = 0.956 miles

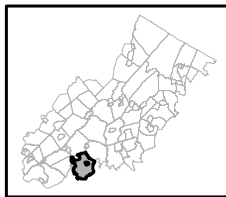


Exhibit F: Total Forest Area



-  Forested Areas
-  Preservation Area
-  Municipal Boundaries

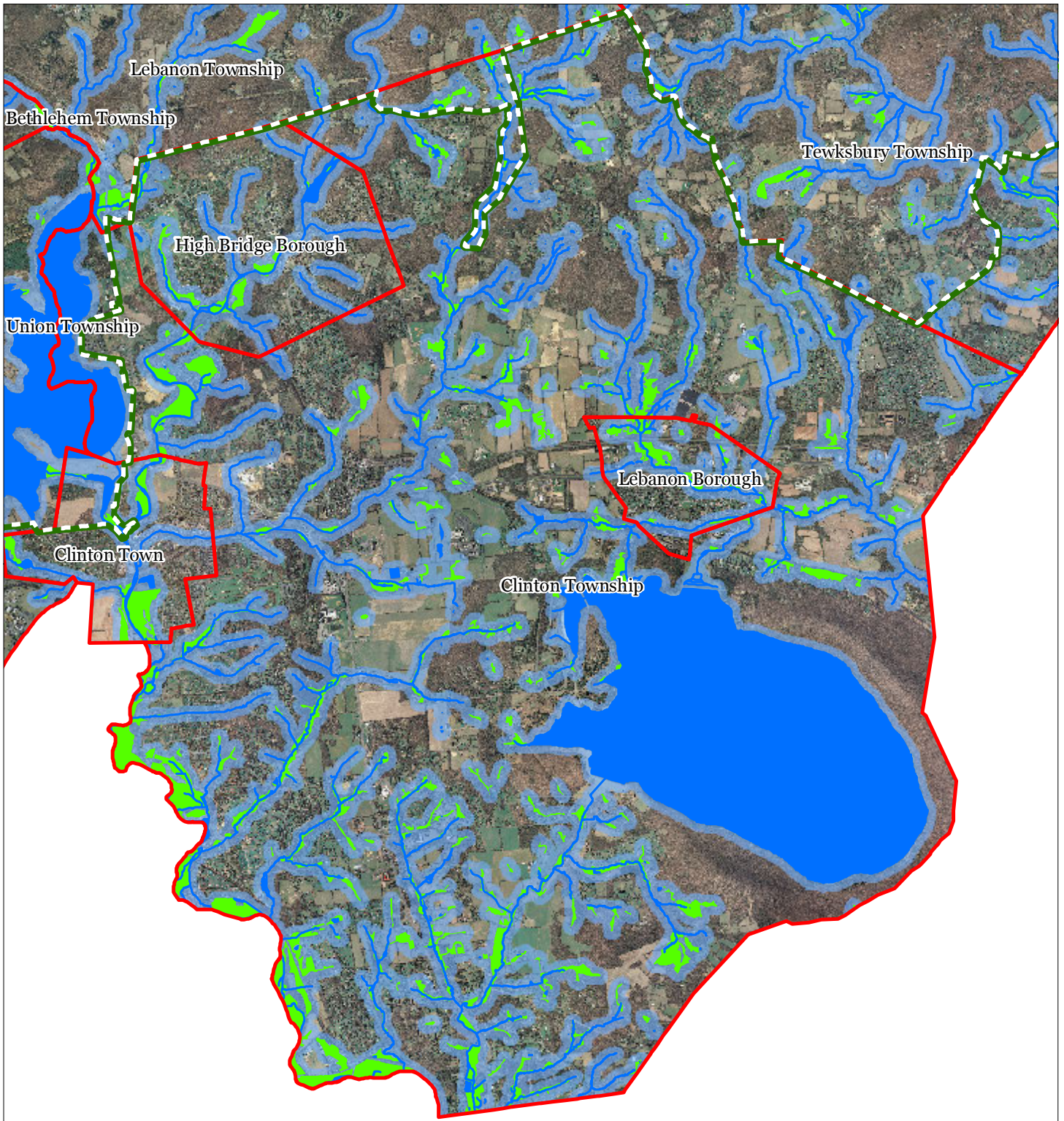
Clinton Township



1 inch = 0.956 miles



Exhibit H: Highlands Open Waters



-  Highlands Open Water Buffers (300ft)
-  Streams
-  Wetlands
-  Lakes & Ponds
-  Preservation Area
-  Municipal Boundaries

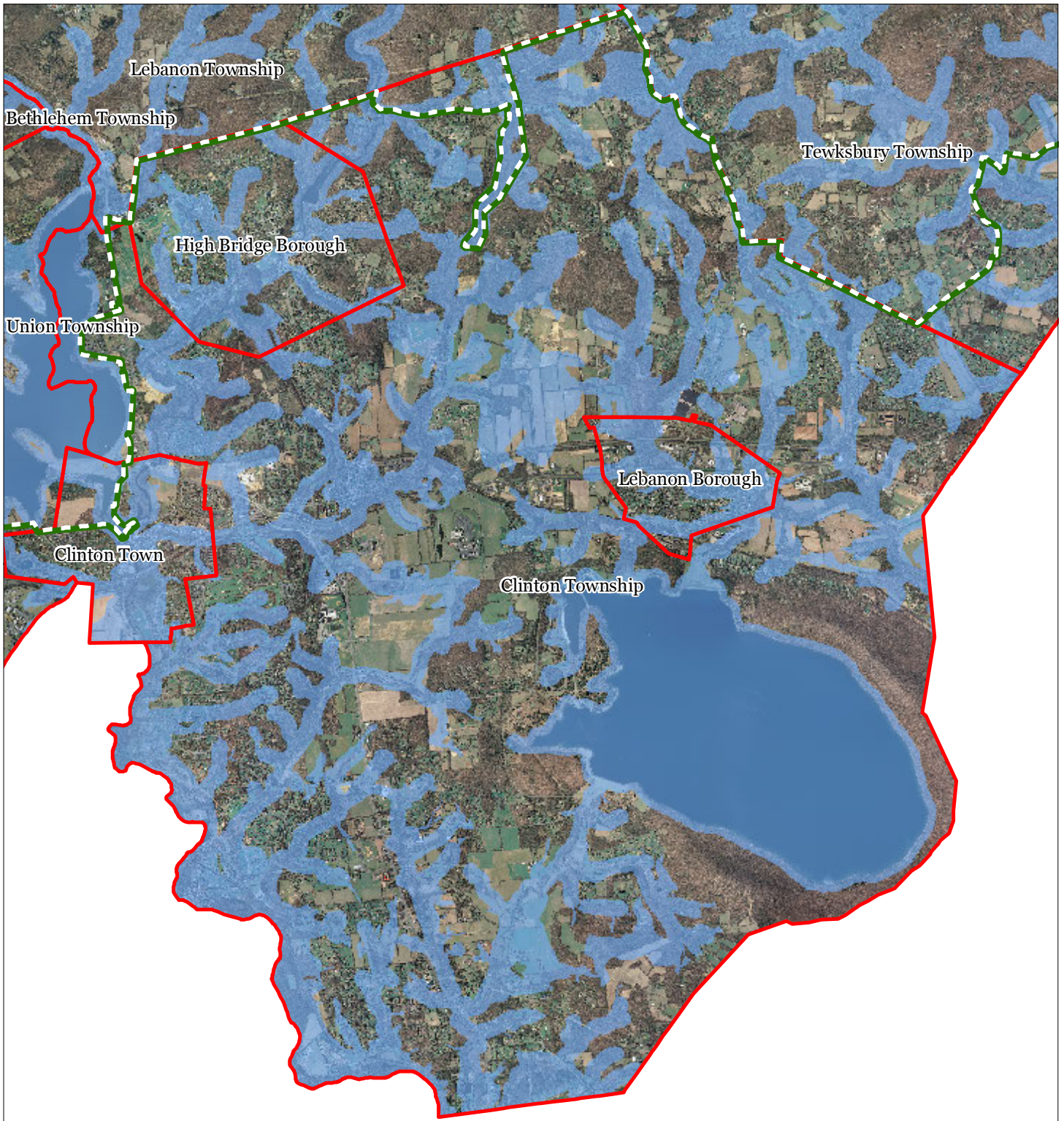
Clinton Township

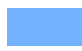




1 inch = 0.956 miles

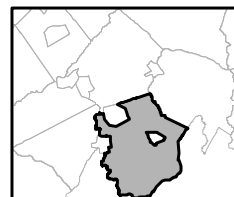
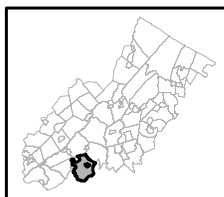


Exhibit I: Highlands Riparian Areas



-  Riparian Area
-  Preservation Area
-  Municipal Boundaries

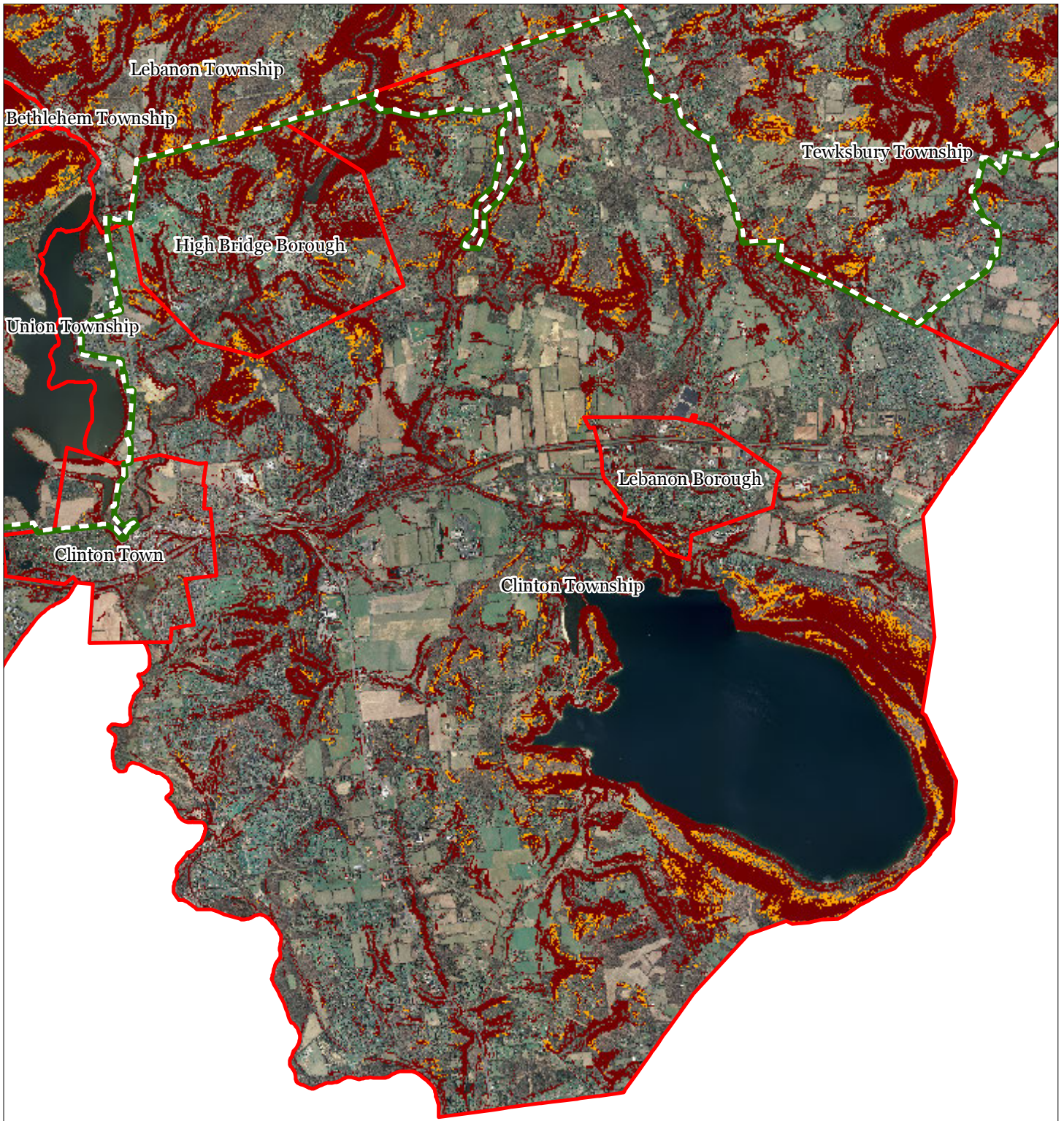
Clinton Township







1 inch = 0.956 miles



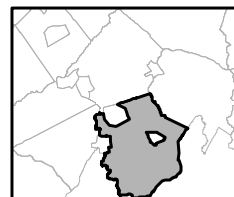
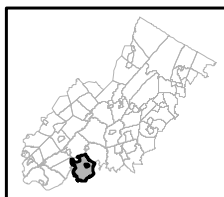
Exhibit L: Steep Slope Protection Areas



Steep Slopes

-  Moderate
-  Severe
-  Preservation Area
-  Municipal Boundaries

Clinton Township






1 inch = 0.956 miles

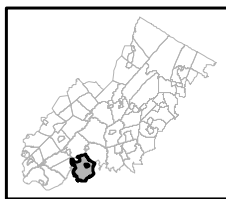


Exhibit M: Critical Wildlife Habitat



-  Critical Wildlife Habitat
-  Preservation Area
-  Municipal Boundaries

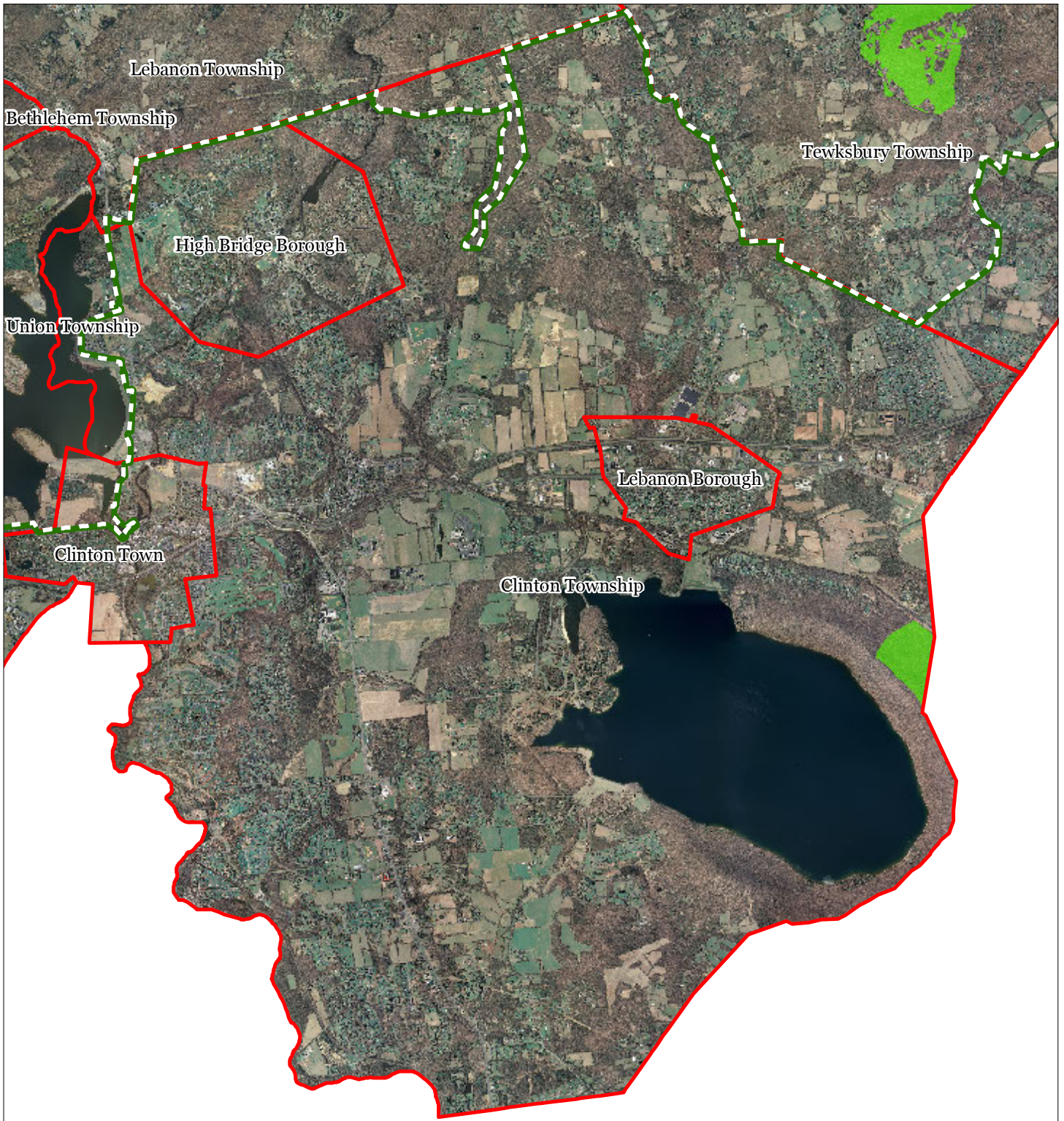
Clinton Township






1 inch = 0.956 miles

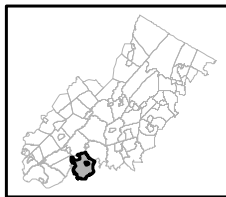


Exhibit N: Significant Natural Areas



-  Significant Natural Areas
-  Preservation Area
-  Municipal Boundaries

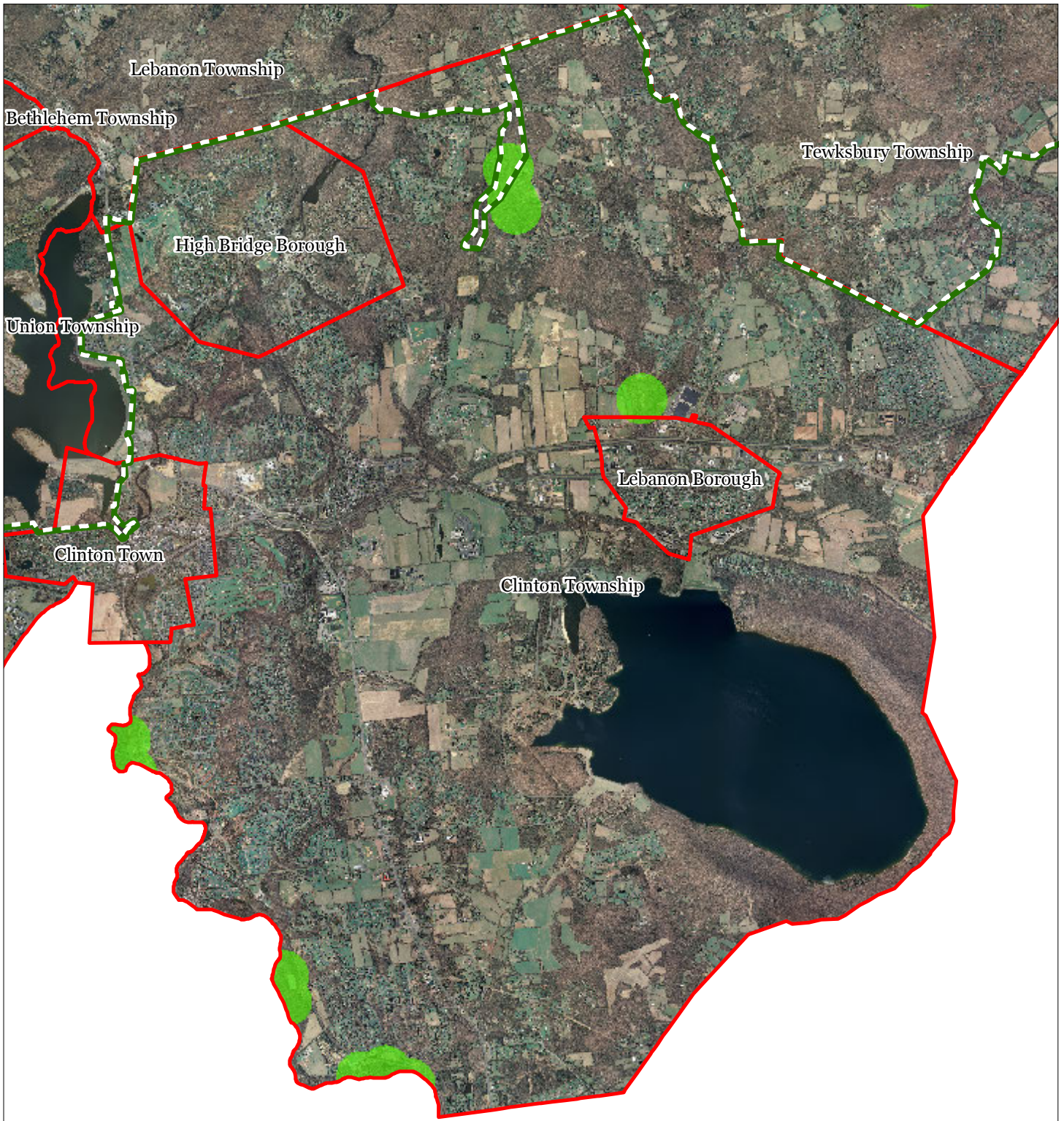
Clinton Township






1 inch = 0.956 miles

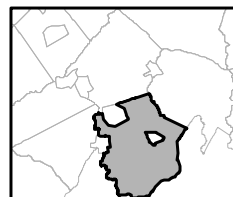
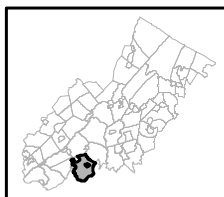


Exhibit O: Vernal Pools



-  Vernal Pools + 1000ft Buffer
-  Preservation Area
-  Municipal Boundaries

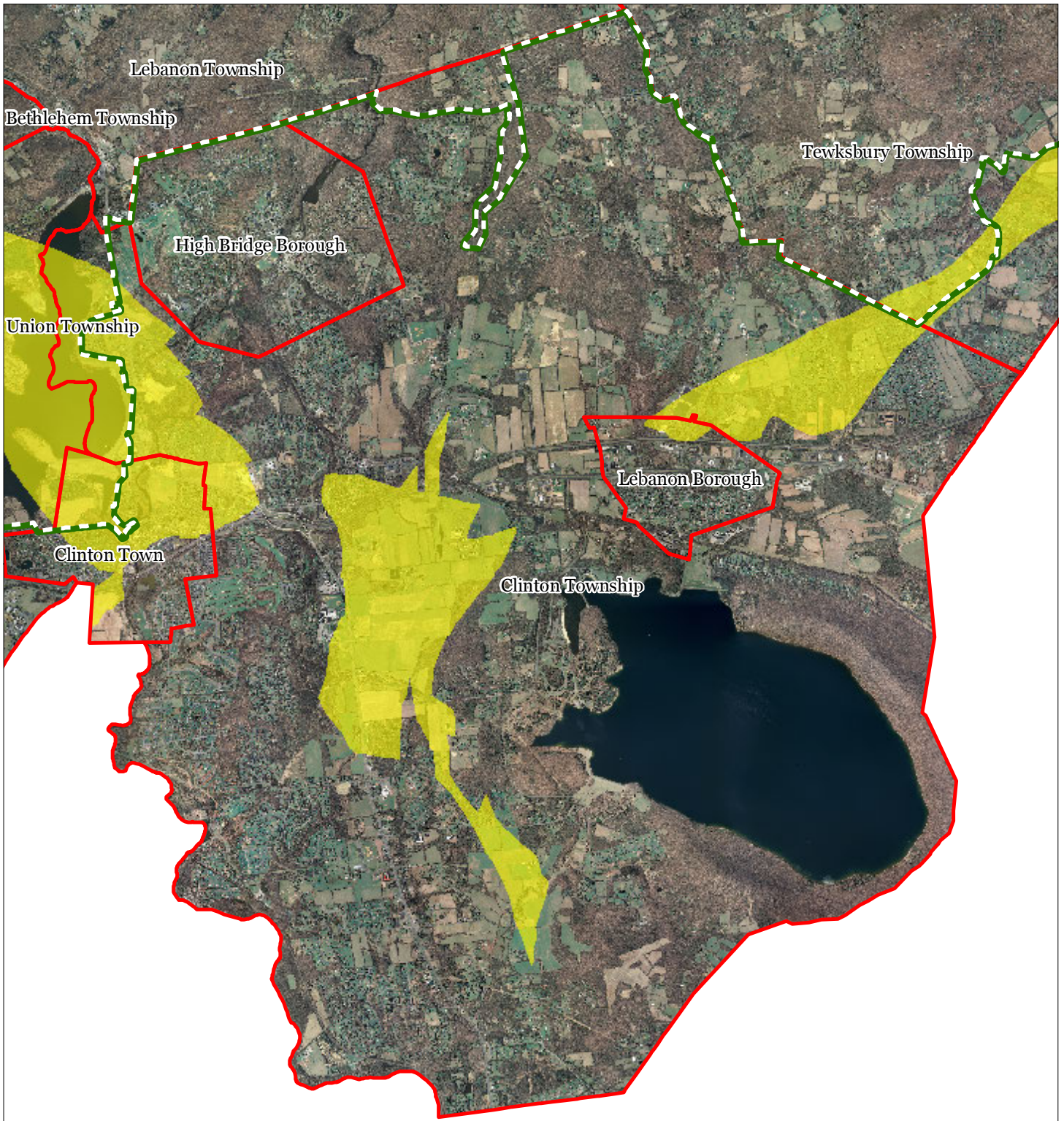
Clinton Township






1 inch = 0.956 miles

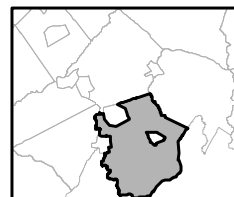
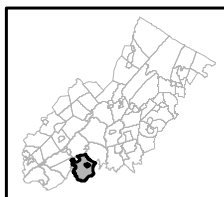


Exhibit P: Carbonate Rock Area



-  Carbonate Rock Area
-  Preservation Area
-  Municipal Boundaries

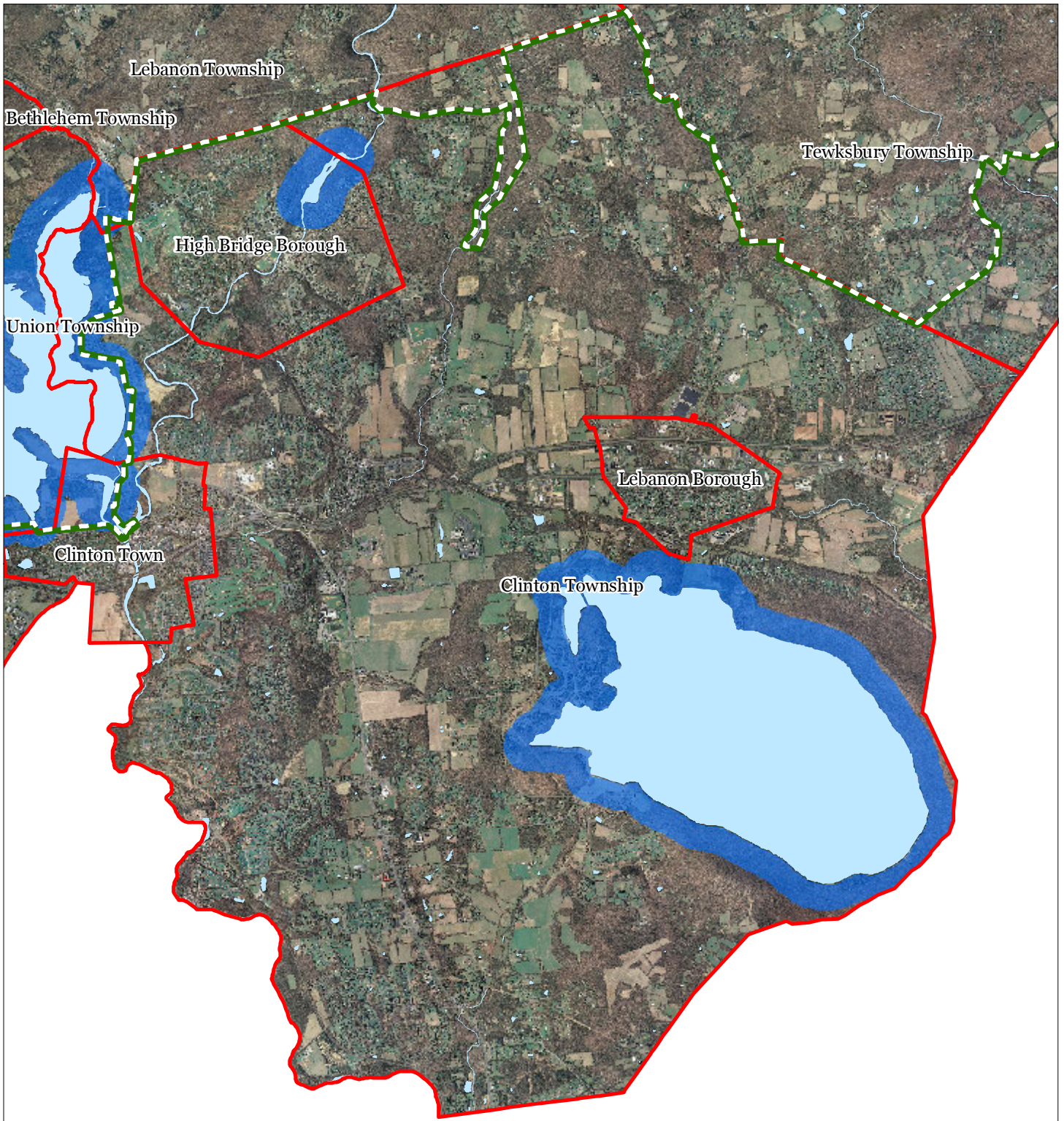
Clinton Township

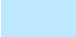





1 inch = 0.956 miles

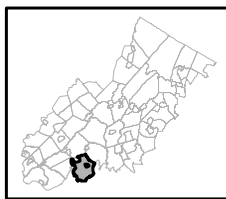


Exhibit Q: Lake Management Area



-  Lakes & Ponds
-  Lake Management Area
-  Preservation Area
-  Municipal Boundaries

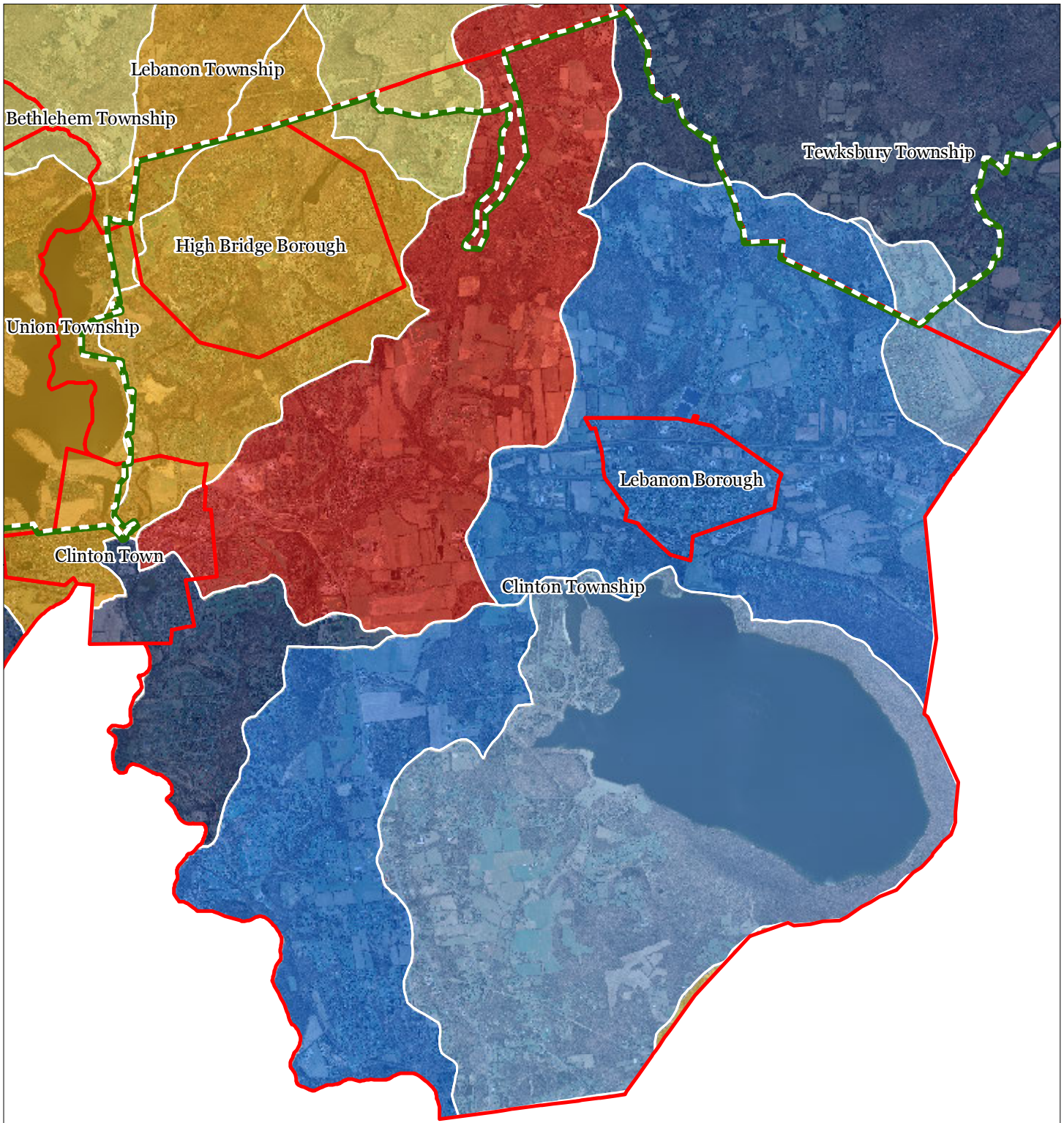
Clinton Township



1 inch = 0.956 miles



Exhibit R: Net Water Availability

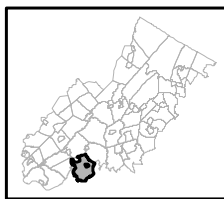


Net Water Availability By HUC14
Million Gallons Per Day (MGD)

- 0.10 - 0.39
- 0.05 - 0.09
- 0.00 - 0.04
- 0.09 - 0.00
- 0.99 - -0.10
- 7.10 - -1.00

- Preservation Area
- Municipal Boundaries

Clinton Township






1 inch = 0.956 miles

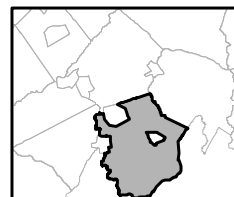
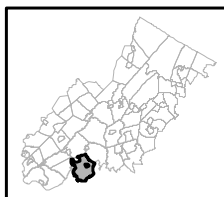


Exhibit S: Prime Ground Water Recharge Areas



-  Prime Groundwater Recharge Areas
-  Preservation Area
-  Municipal Boundaries

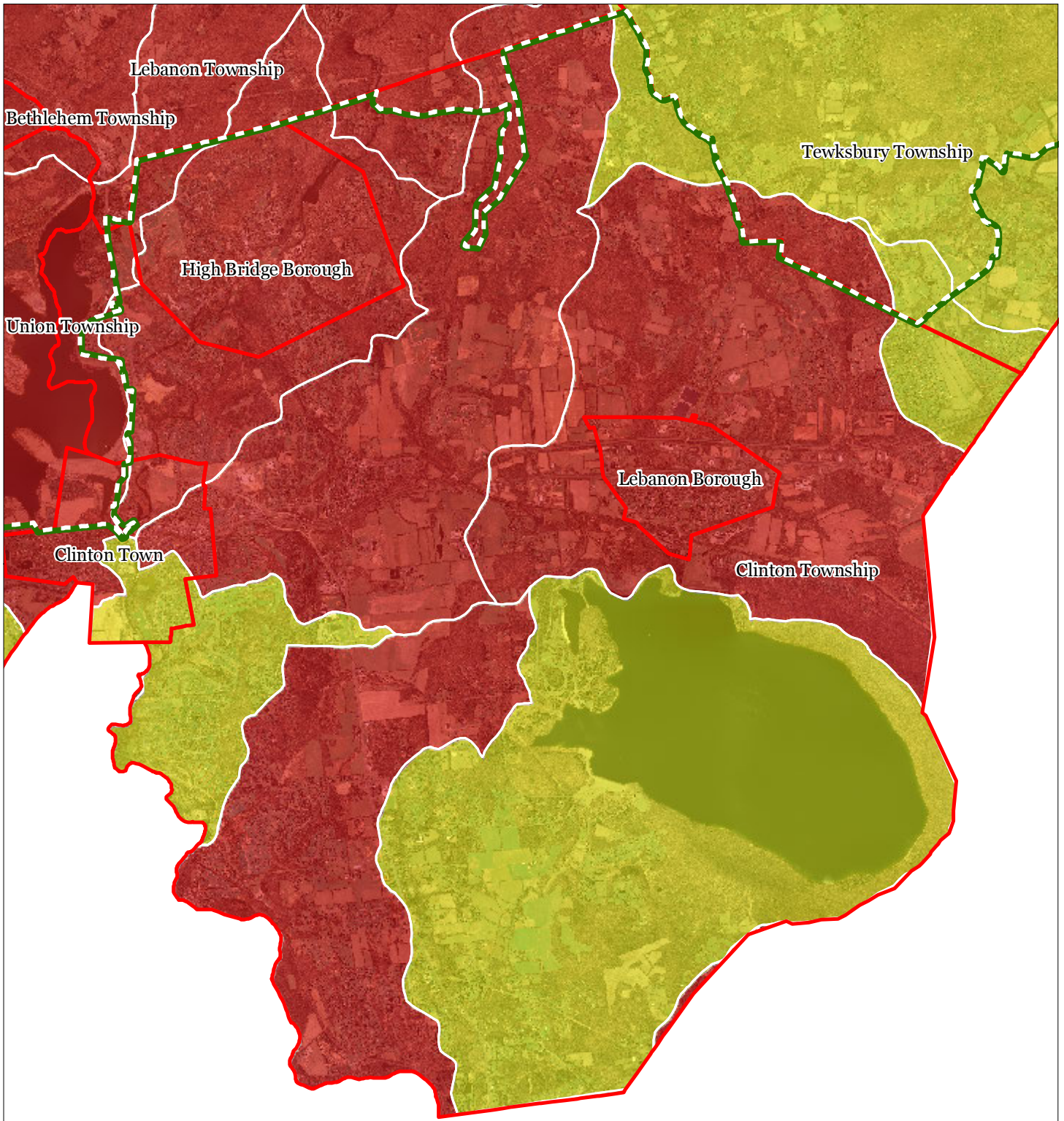
Clinton Township



1 inch = 0.956 miles



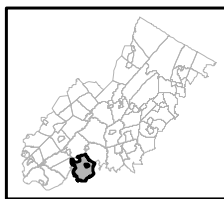
Exhibit T: HUC 14s on NJDEP Impaired Waters List



Impaired Waters Overall Assessment by HUC14 Subwatershed

- Non Impacted
- Insufficient Data Available
- Moderate
- Water Quality Impaired
- Preservation Area
- Municipal Boundaries

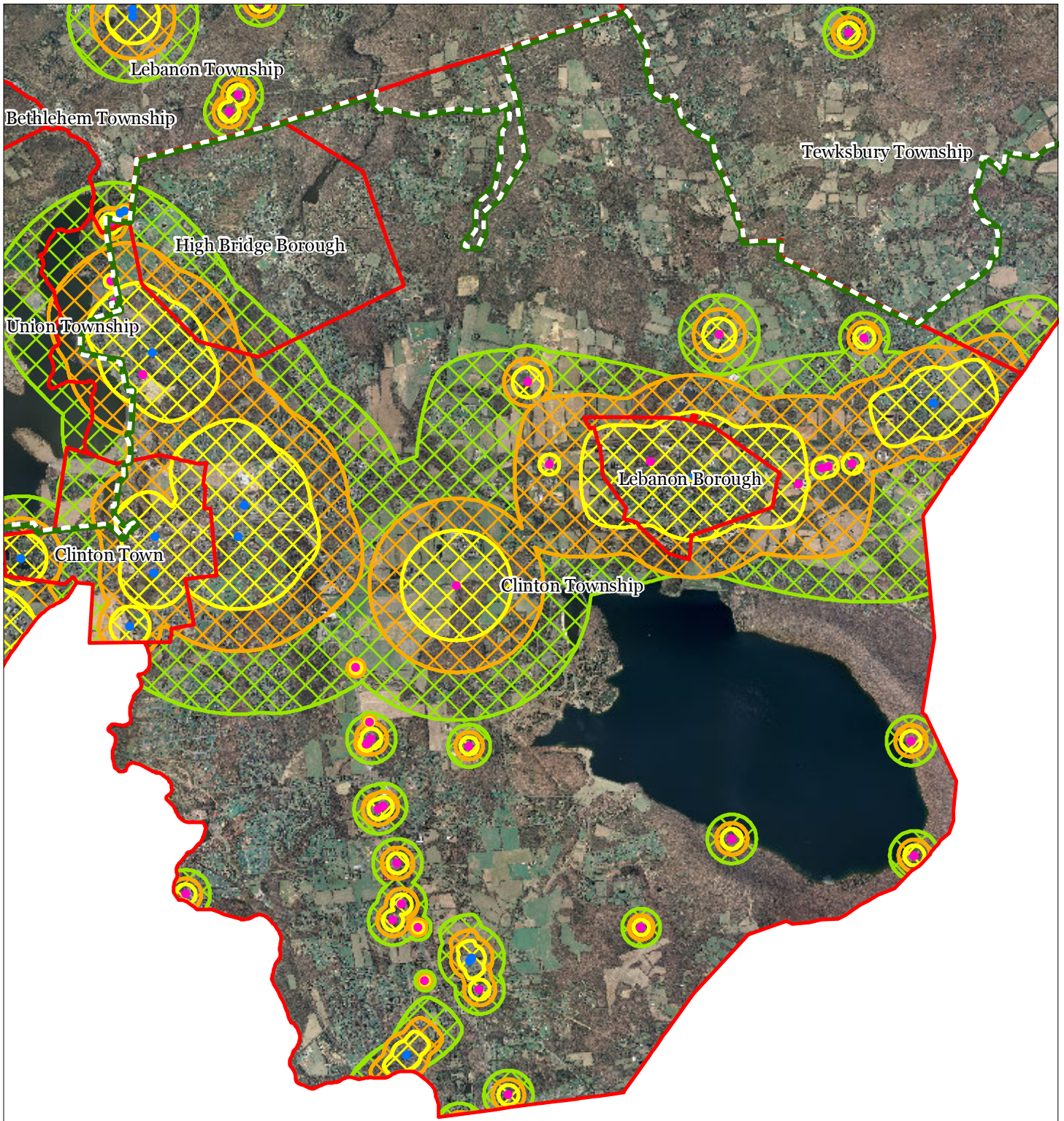
Clinton Township



1 inch = 0.956 miles





Exhibit U: Wellhead Protection Areas



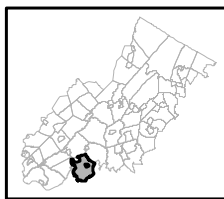
- Public Community Wells
- Public Non-Community Wells

Wellhead Protection Areas

-  2-Year Tier
-  5-Year Tier
-  12-Year Tier

-  Preservation Area
-  Municipal Boundaries

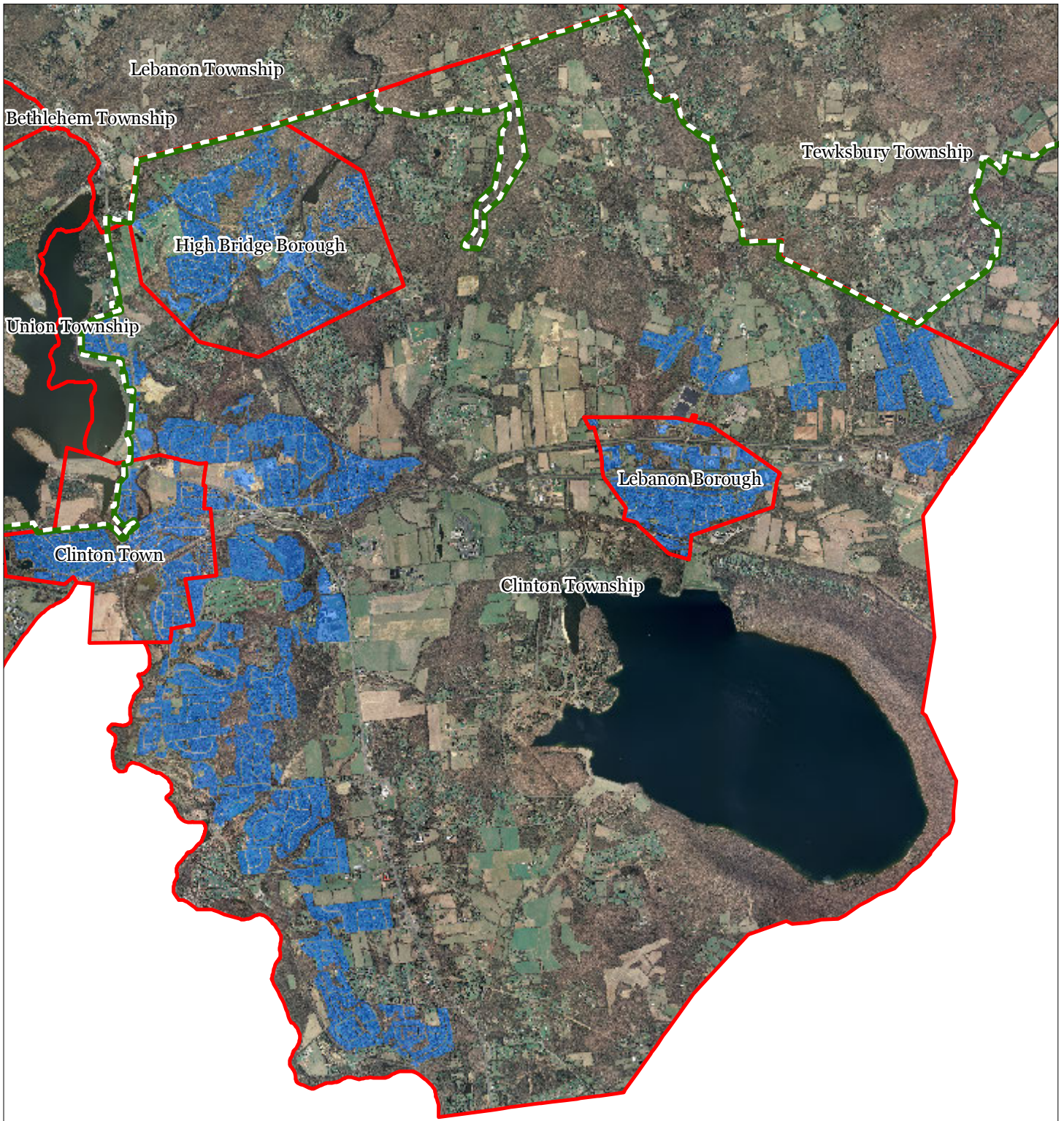
Clinton Township






1 inch = 0.956 miles

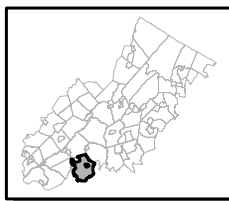


Exhibit V: Public Community Water Systems



-  Public Community Water Systems
-  Preservation Area
-  Municipal Boundaries

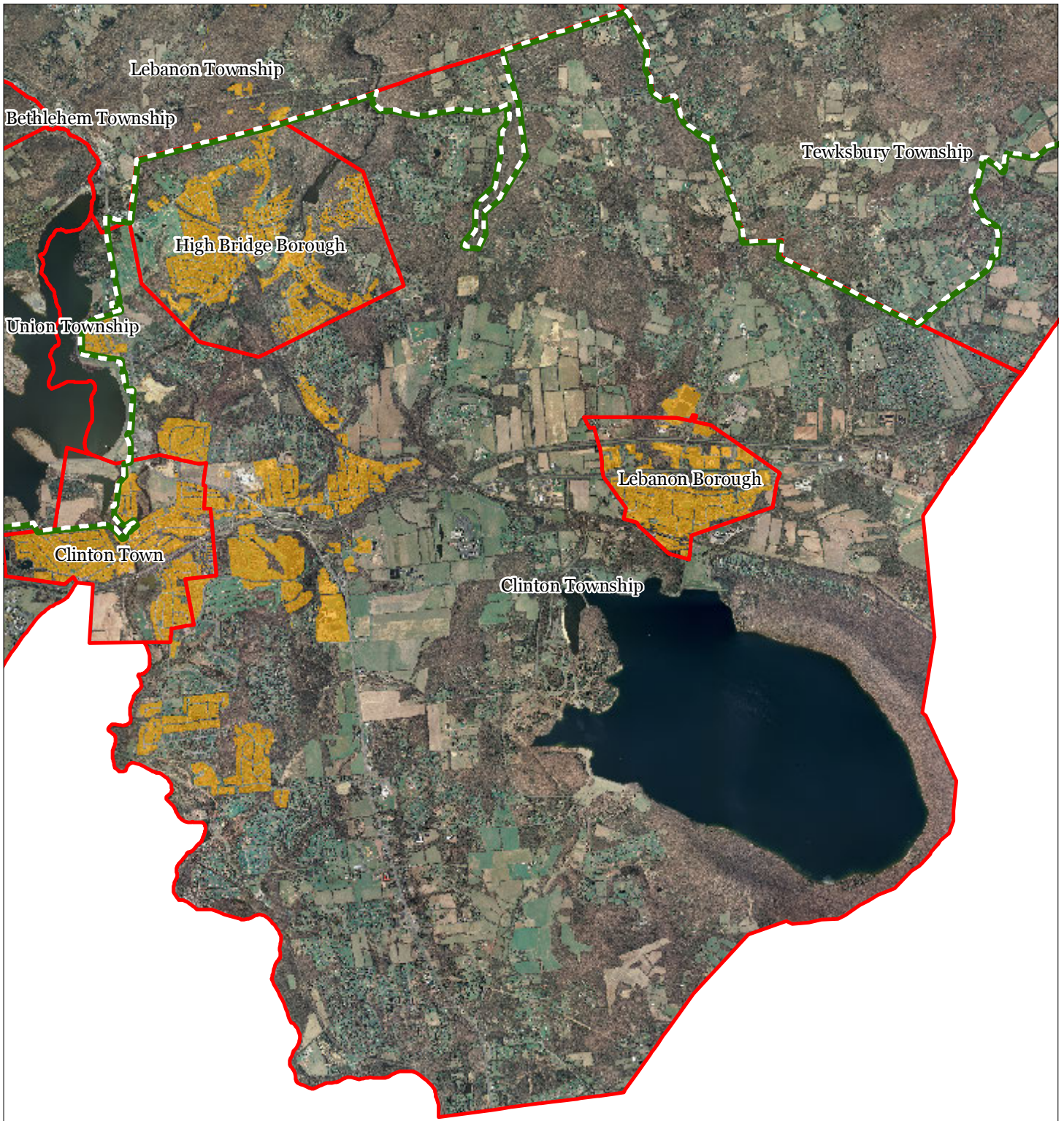
Clinton Township






1 inch = 0.956 miles



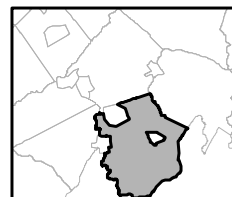
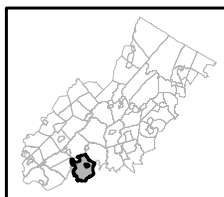
Exhibit W: Highlands Domestic Sewerage Facilities



Highlands Domestic Sewerage Facilities

-  Existing Area Served
-  Preservation Area
-  Municipal Boundaries

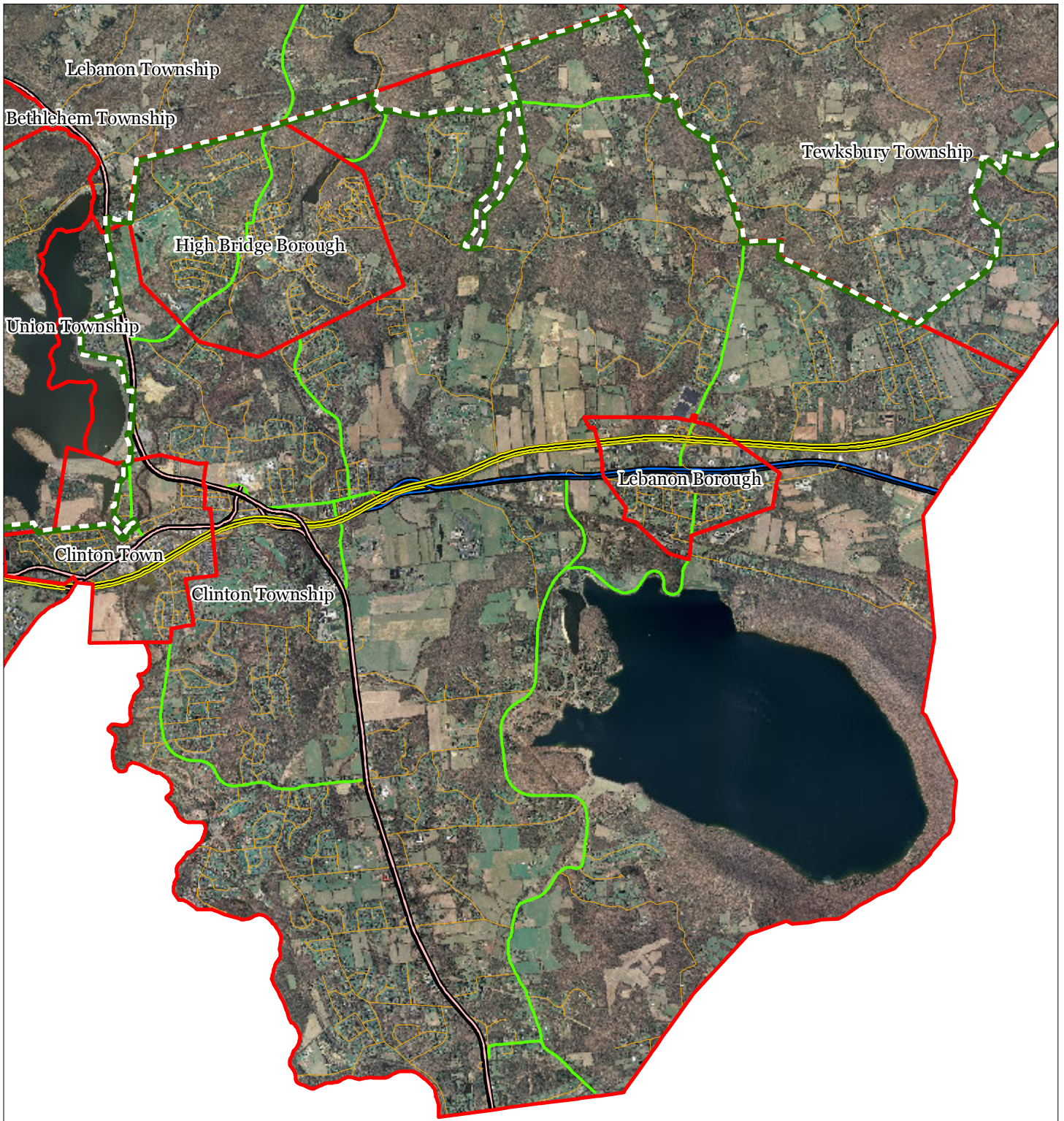
Clinton Township



1 inch = 0.956 miles



Exhibit Y: Highlands Roadway Network




Roadway Network


 Interstate Highways

 U.S. Routes

 State Routes

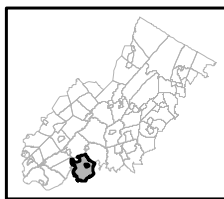
 County Routes

 Local Routes

 Preservation Area

 Municipal Boundaries

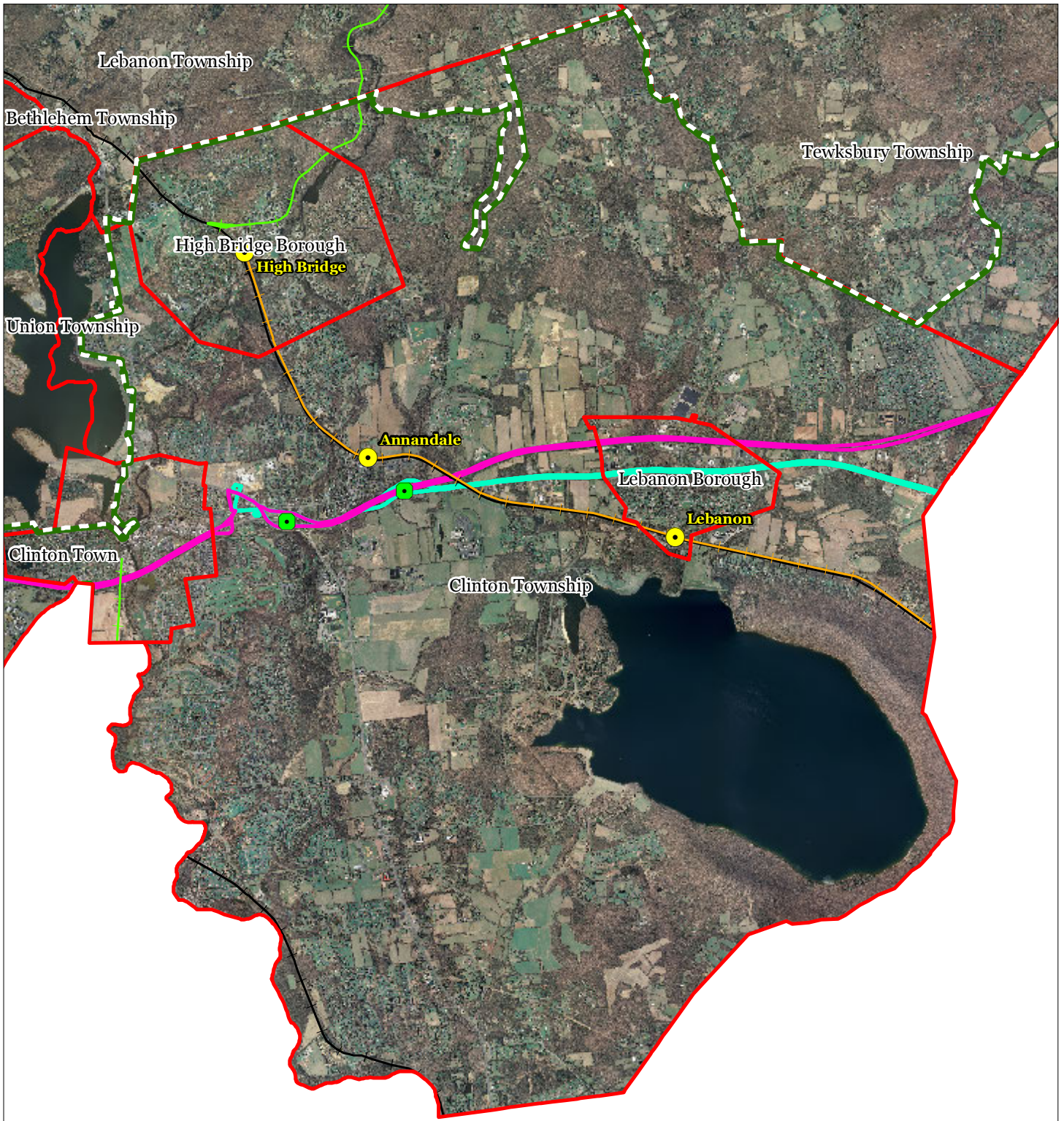
Clinton Township



1 inch = 0.956 miles

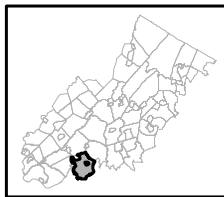


Exhibit Z: Highlands Transit Network



- | | |
|--------------------------------|----------------------|
| Rail Network | Rail Stations |
| Boonton Line | Park and Ride Sites |
| Main Line & Bergen County Line | Private Bus Lines |
| Morris and Essex Line | NJ Transit Bus Lines |
| Raritan Valley Line | Airports |
| Freight Rail Lines | |
| Freight Rail Lines | |
| Abandoned Freight Rail | |

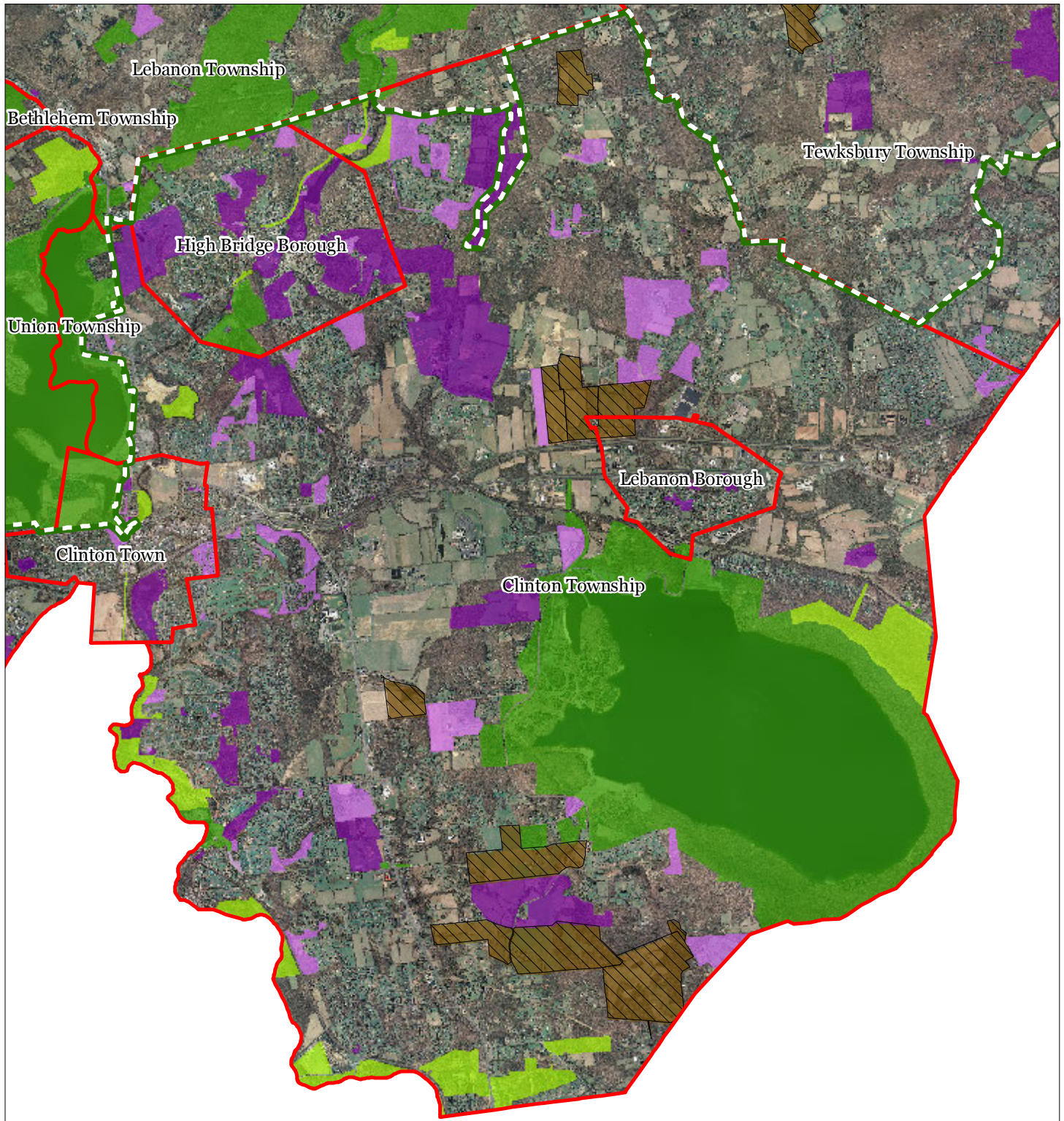
Clinton Township



1 inch = 0.956 miles

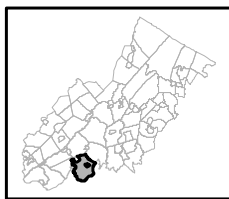


Exhibit AA: Preserved Lands



- | | |
|---|-------------------------------|
| Preserved Lands | Conservation Easements |
| Federal Open Space | Green Acres |
| State Open Space | SADC Easements |
| County Open Space | SADC Final |
| Municipal Open Space | SADC Preserved |
| Non-Profit/Private Open Space | Municipal Boundaries |
| Water Supply Watershed Lands | Preservation Area |
| Preserved Farmland | |
| Highlands Transfer of Development Lands | |

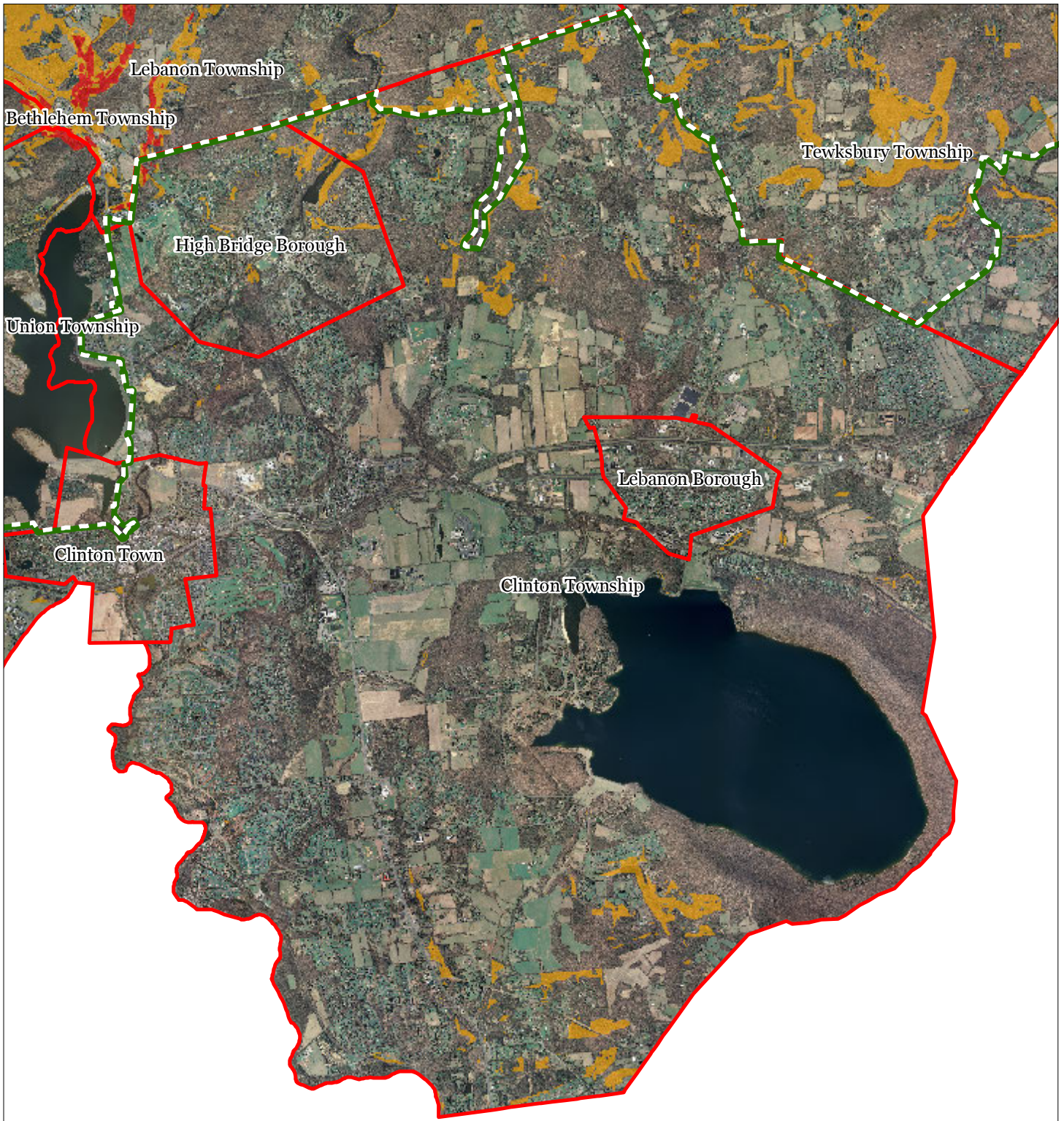
Clinton Township







1 inch = 0.956 miles



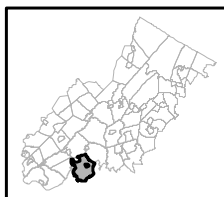
Exhibit BB: Highlands Conservation Priority Areas



Conservation Priority Area

-  Moderate
-  High
-  Preservation Area
-  Municipal Boundaries

Clinton Township

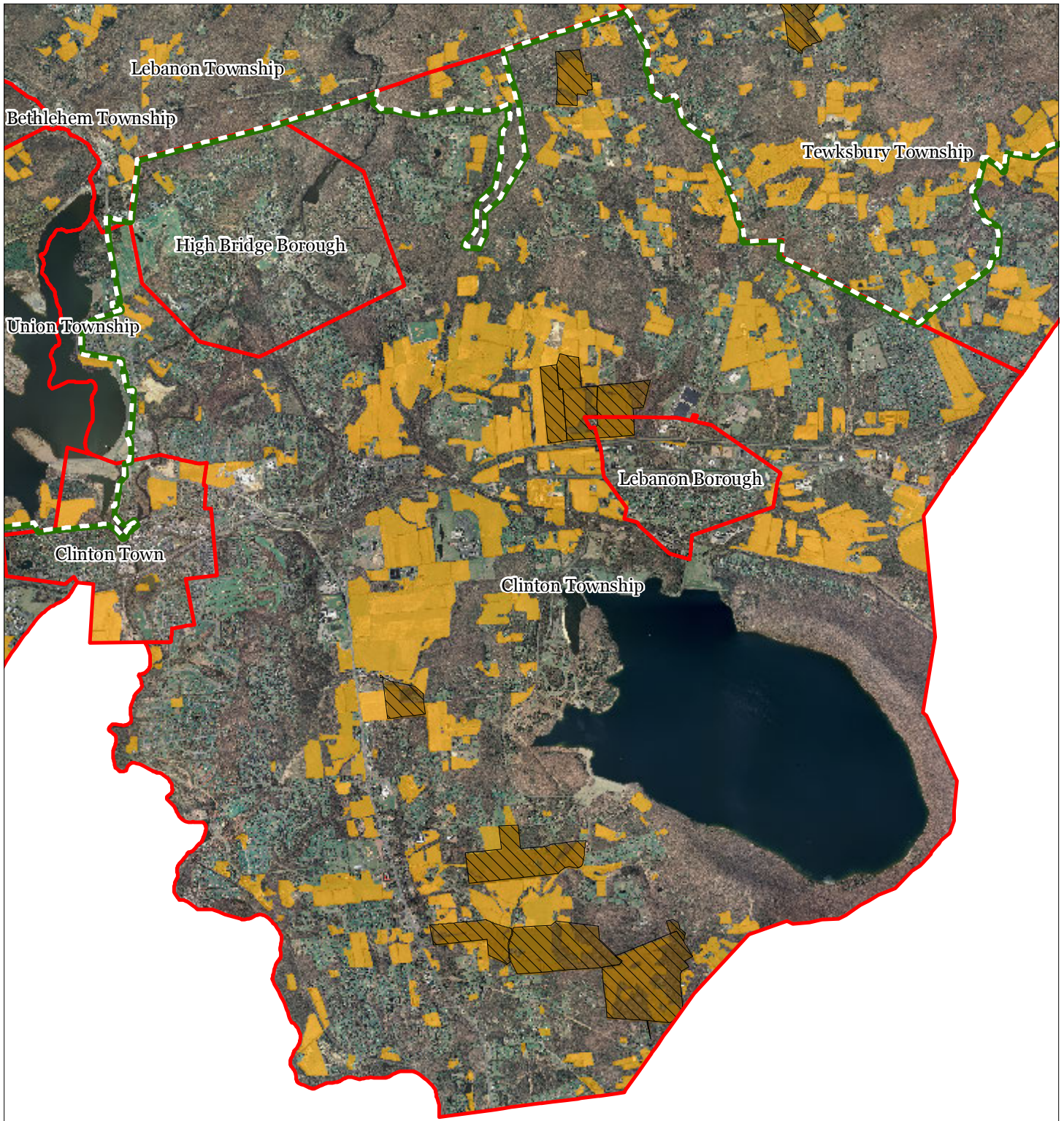


1 inch = 0.956 miles



TOWNSHIP OF CLINTON
HIGHLANDS MASTER PLAN ELEMENT

Exhibit DD: Preserved Farms, SADC Easements, All Agricultural Uses



SADC Easements

-  SADC Final
-  SADC Preserved
-  Preserved Farmland
-  Agriculture Uses
-  Preservation Area
-  Municipal Boundaries

Clinton Township

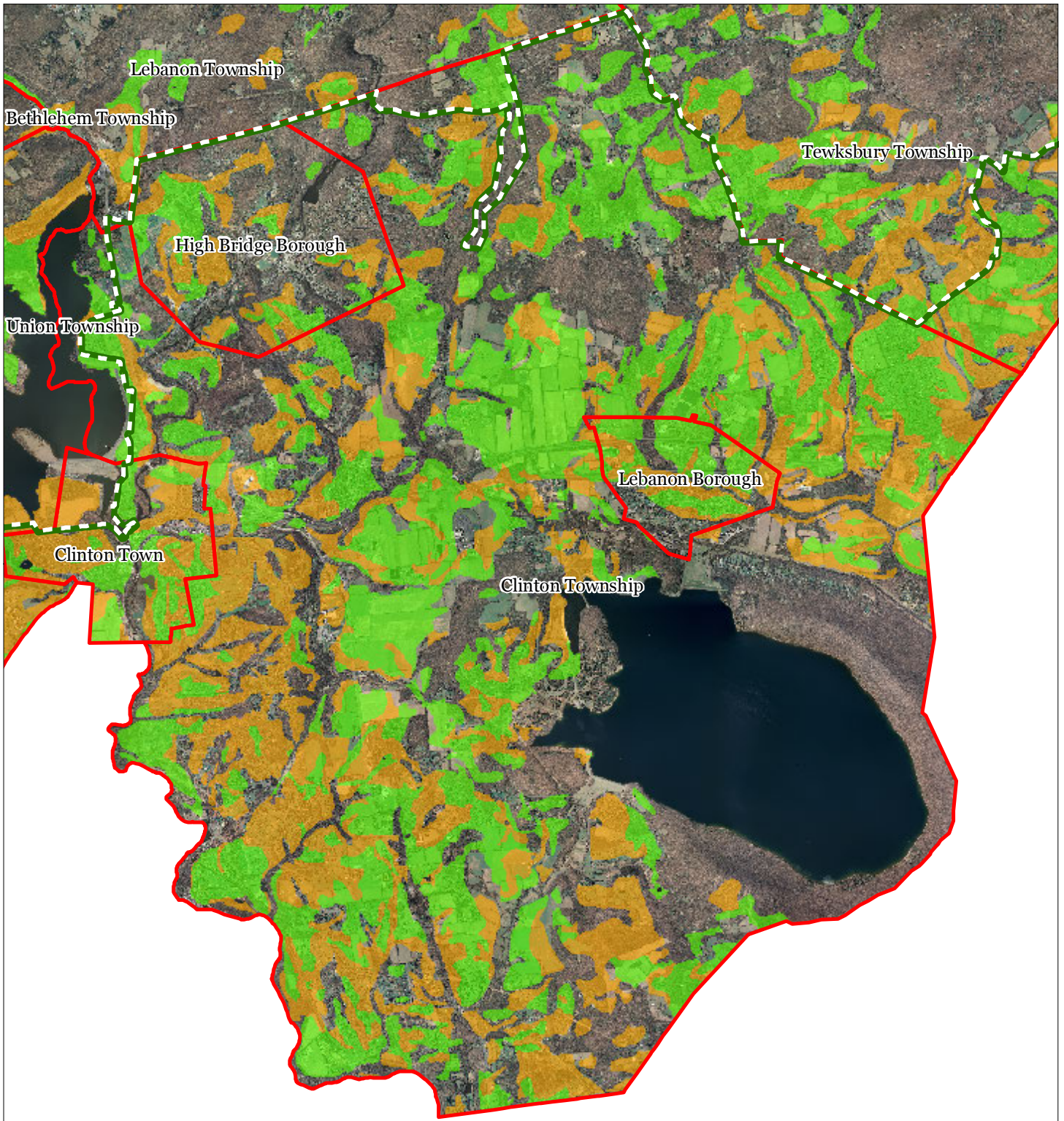


1 inch = 0.956 miles



March 2012

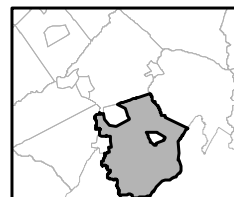
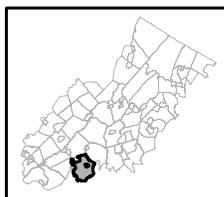
Exhibit EE: Important Farmland Soils



Important Farmland Soils

- Prime Farmland
- Farmland of Local Importance
- Farmland of Statewide Importance
- Farmland of Unique Importance
- Preservation Area
- Municipal Boundaries

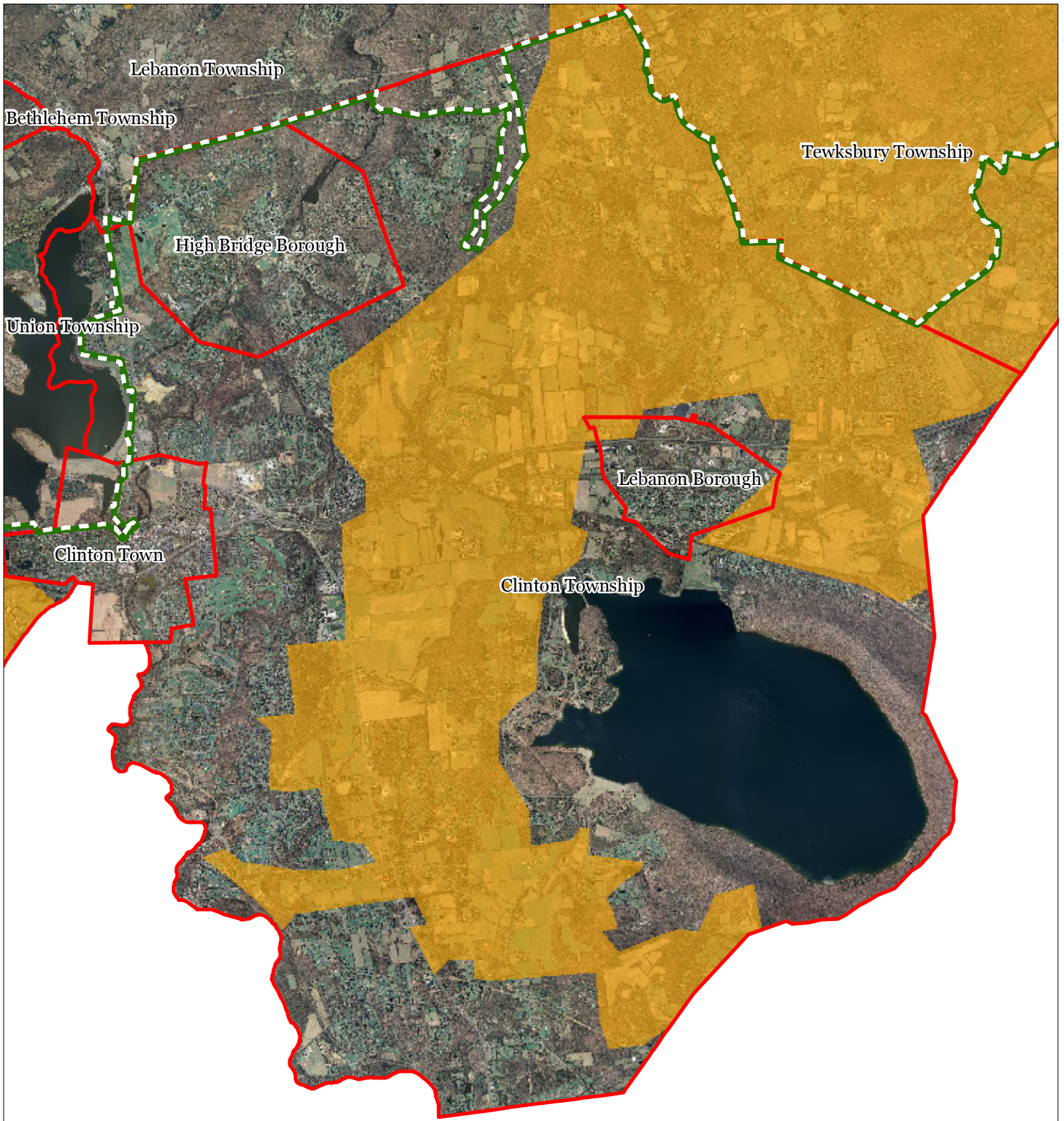
Clinton Township






1 inch = 0.956 miles

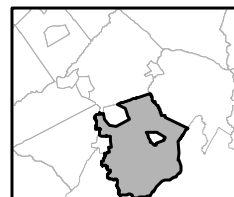
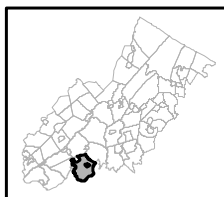


Exhibit FF: Agricultural Resource Area



-  Agricultural Resource Area
-  Preservation Area
-  Municipal Boundaries

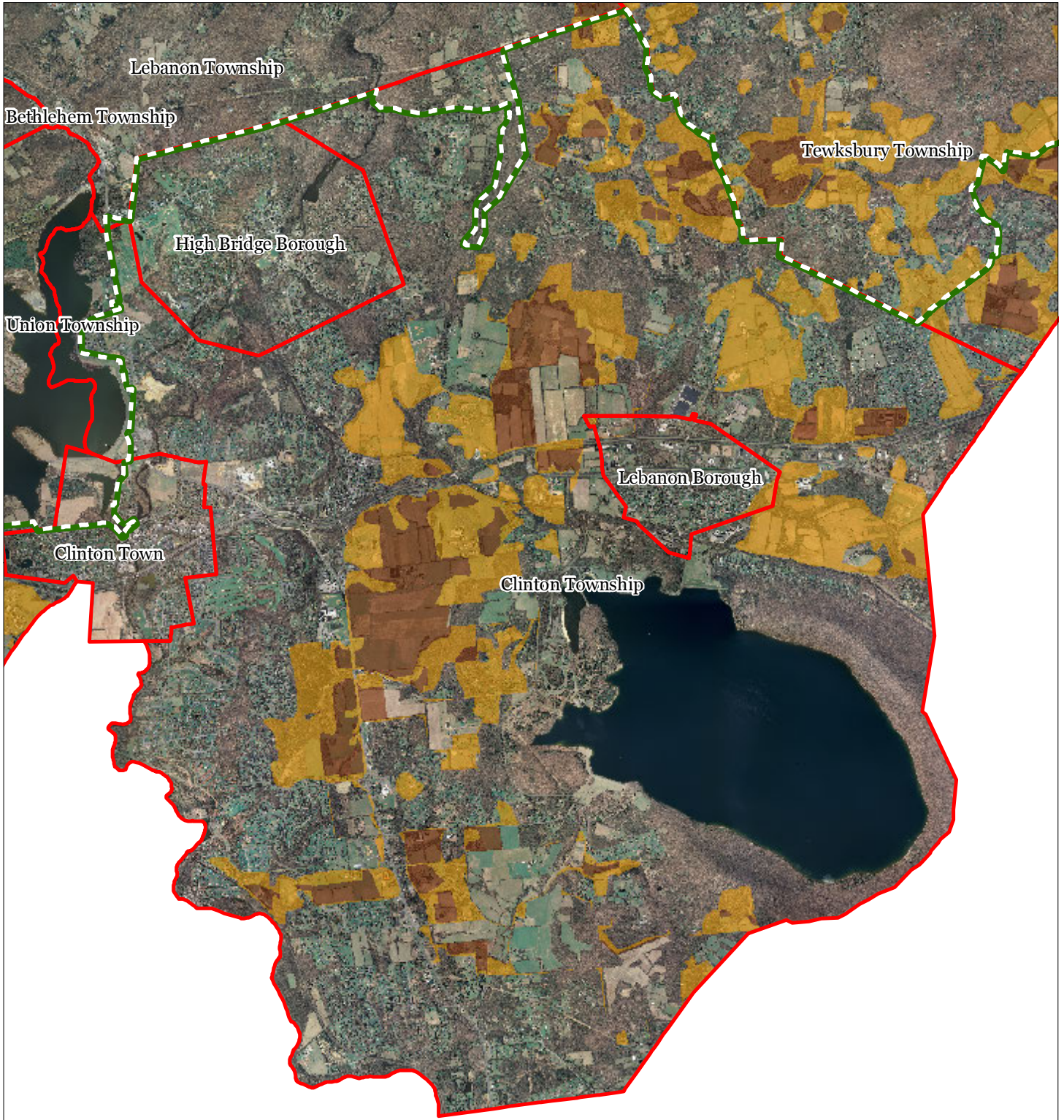
Clinton Township







1 inch = 0.956 miles



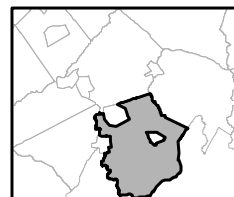
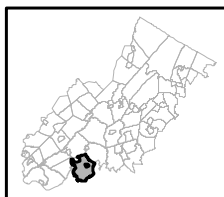
Exhibit GG: Agricultural Priority Area



Agricultural Priority Area

-  Moderate
-  High
-  Preservation Area
-  Municipal Boundaries

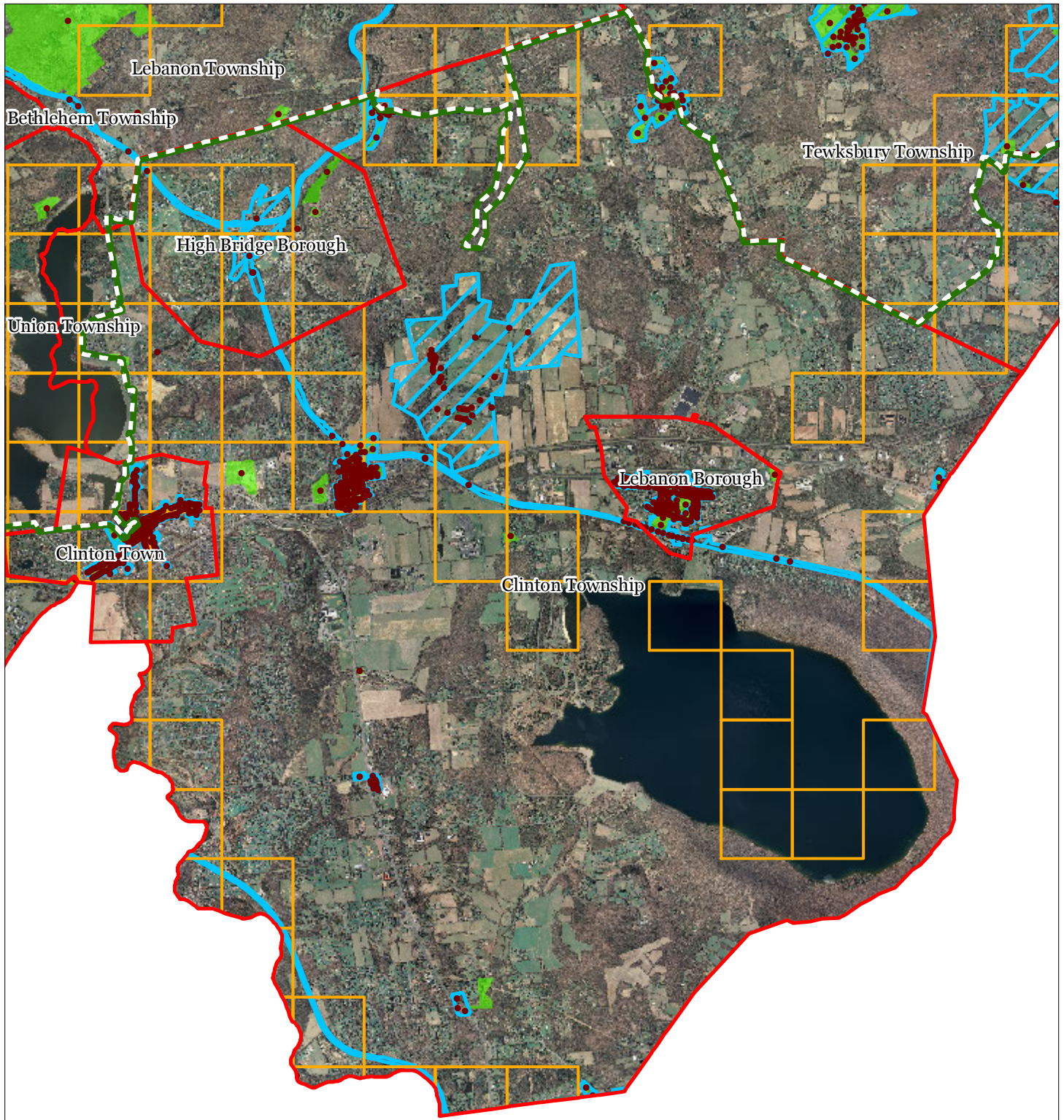
Clinton Township



1 inch = 0.956 miles



Exhibit HH: Historic, Cultural, and Archaeological Resources Inventory



-  Preservation Area
-  Municipal Boundaries
-  Archaeological Grids (1 sqmi)
-  NJ Historic Districts
-  Historic Property Points
-  Historic Property Polygons

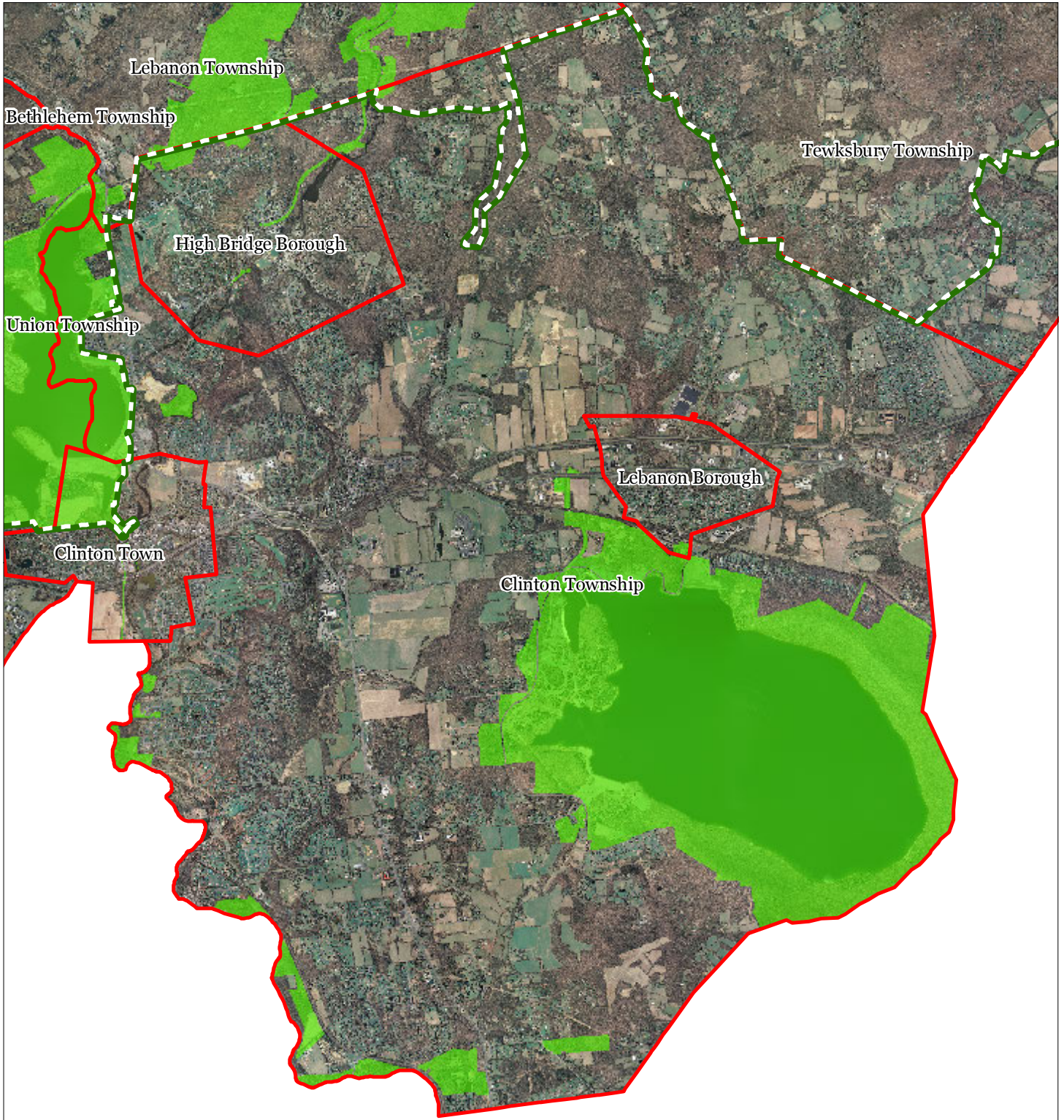
Clinton Township






1 inch = 0.956 miles

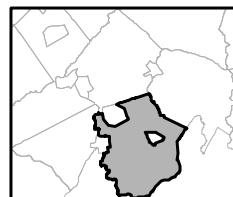
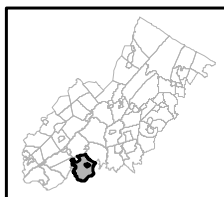


Exhibit II: Baseline Scenic Resources Inventory



-  Scenic Resources
-  Municipal Boundaries
-  Preservation Area

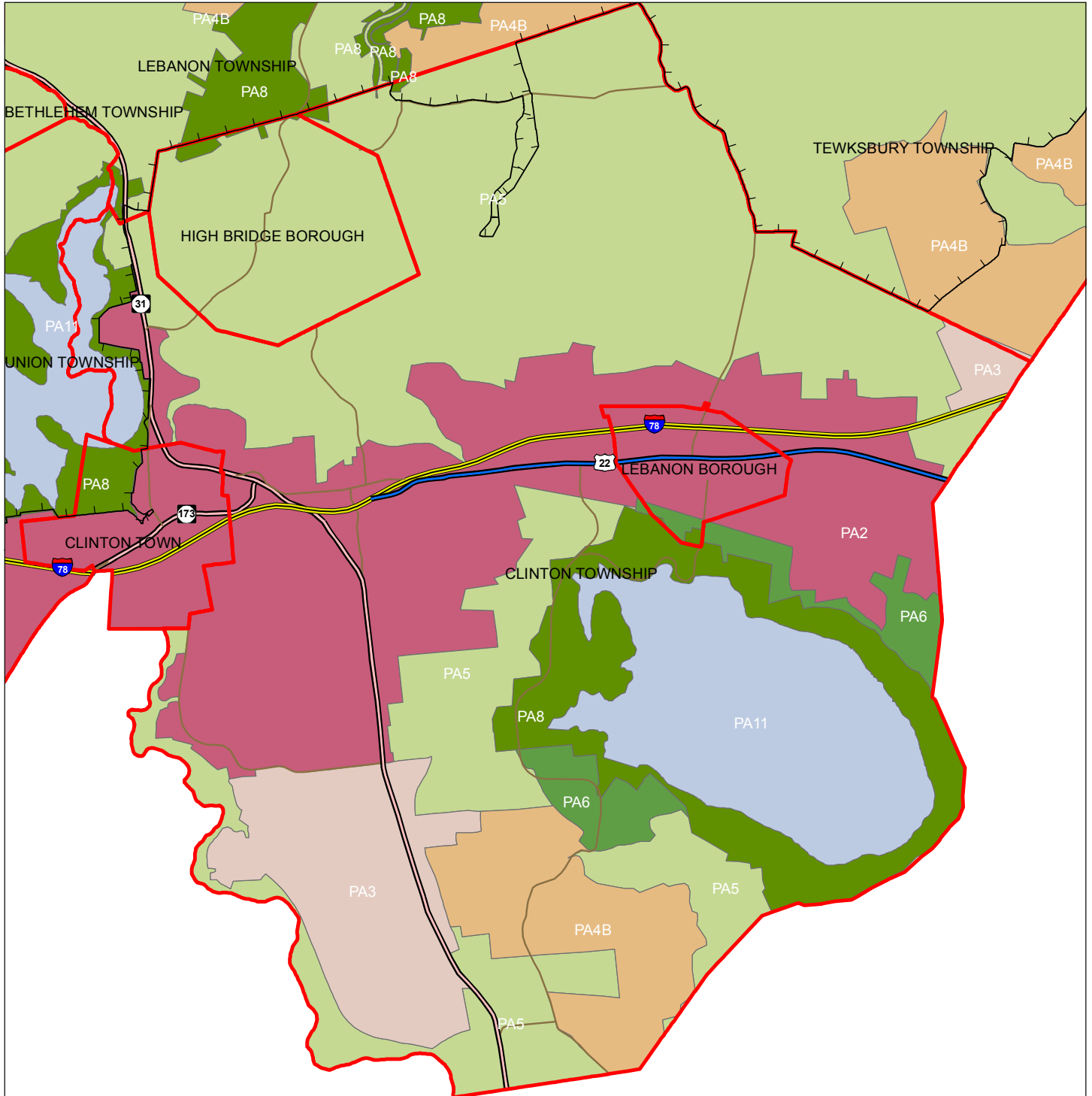
Clinton Township



1 inch = 0.956 miles



Exhibit JJ: State Planning Areas



Legend

- Preservation Area
- Municipal Boundaries
- Interstate Highways
- U.S. Routes
- State Routes
- County Routes
- Designated Centers*

State Planning Areas*

- METROPOLITAN (PA1)
- SUBURBAN (PA2)
- FRINGE (PA3)
- RURAL (PA4)
- RURAL ENVIRONMENTALLY SENSITIVE (PA4B)

- ENVIRONMENTALLY SENSITIVE (PA5)
- PARK (PA6)
- FEDERAL PARK (PA7)
- STATE PARK (PA8)
- WATER (PA11)
- MILITARY (PA12)

1 inch equals 1.01 miles

* All designated centers expired on 1/7/2008 except Byram (expires 5/19/2010), Stanhope (expires 10/16/2008), and Sparta and Vernon (expire 7/16/2009). Center designation may be redesignated by the State Planning Commission and the Highlands Council. State Planning Areas are from the State Development and Redevelopment Plan.