

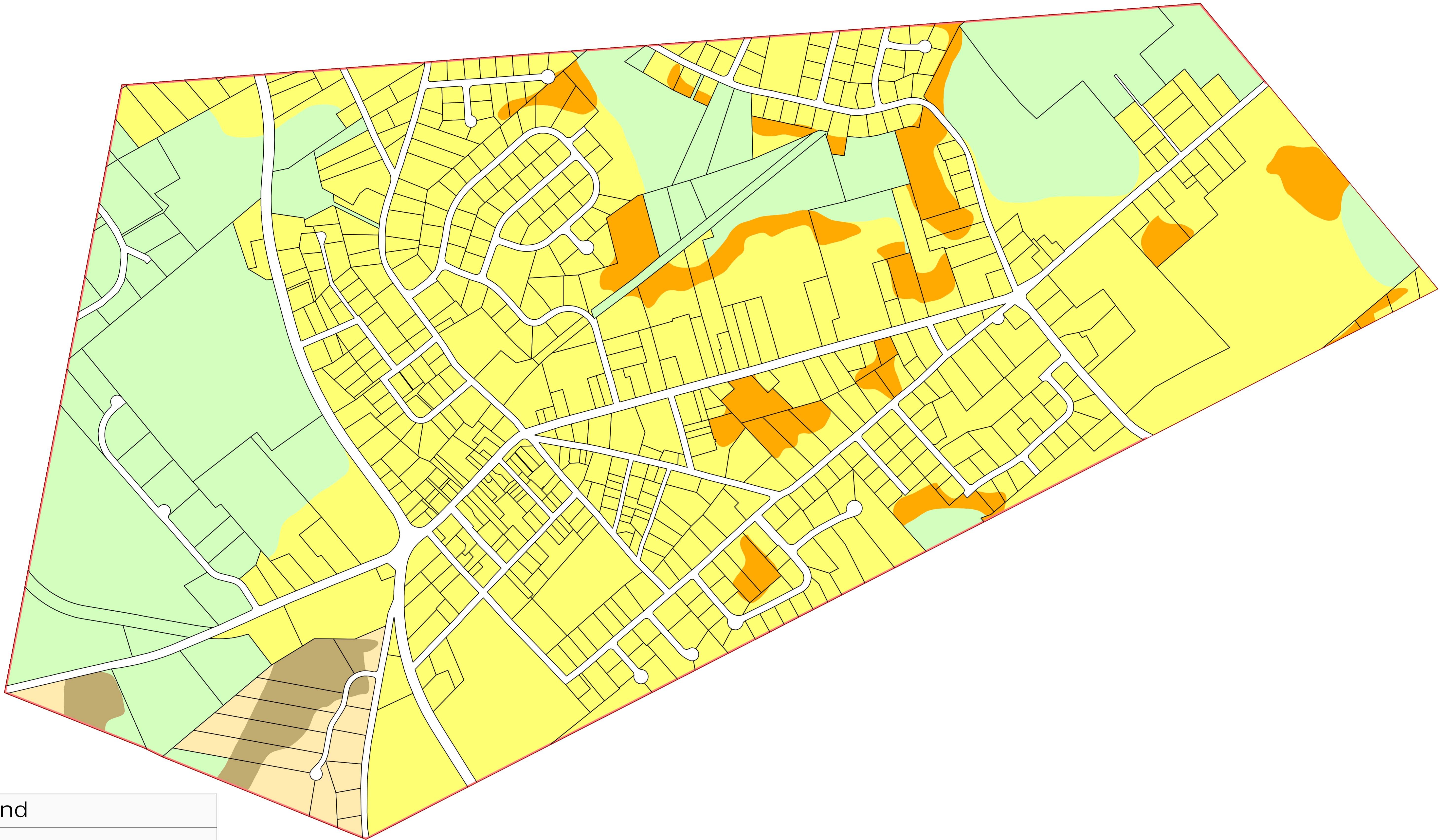
# Exhibit 1:

# BOROUGH OF CHESTER, MORRIS COUNTY, NJ



Borough of Chester Highlands Area

Highlands Zones and Sub-Zones



## Legend

- Municipal Boundary
- Parcel Boundaries
- Highlands Planning Area
- Highlands Preservation Area
- Land Use Capability Zone**
  - Protection
  - Conservation
  - Existing Community
- Land Use Capability Sub-Zone**
  - Existing Community Environmentally Constrained
  - Conservation Environmentally Constrained
  - Wildlife Management

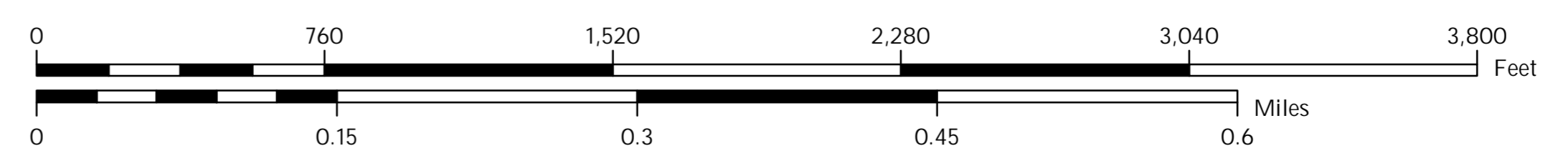
## Locator Maps



**BOROUGH OF CHESTER**  
MORRIS COUNTY, N.J.



MAP PREPARED BY THE NEW JERSEY  
HIGHLANDS COUNCIL, MAY 25, 2016



# Exhibit 2:

# BOROUGH OF CHESTER, MORRIS COUNTY, NJ

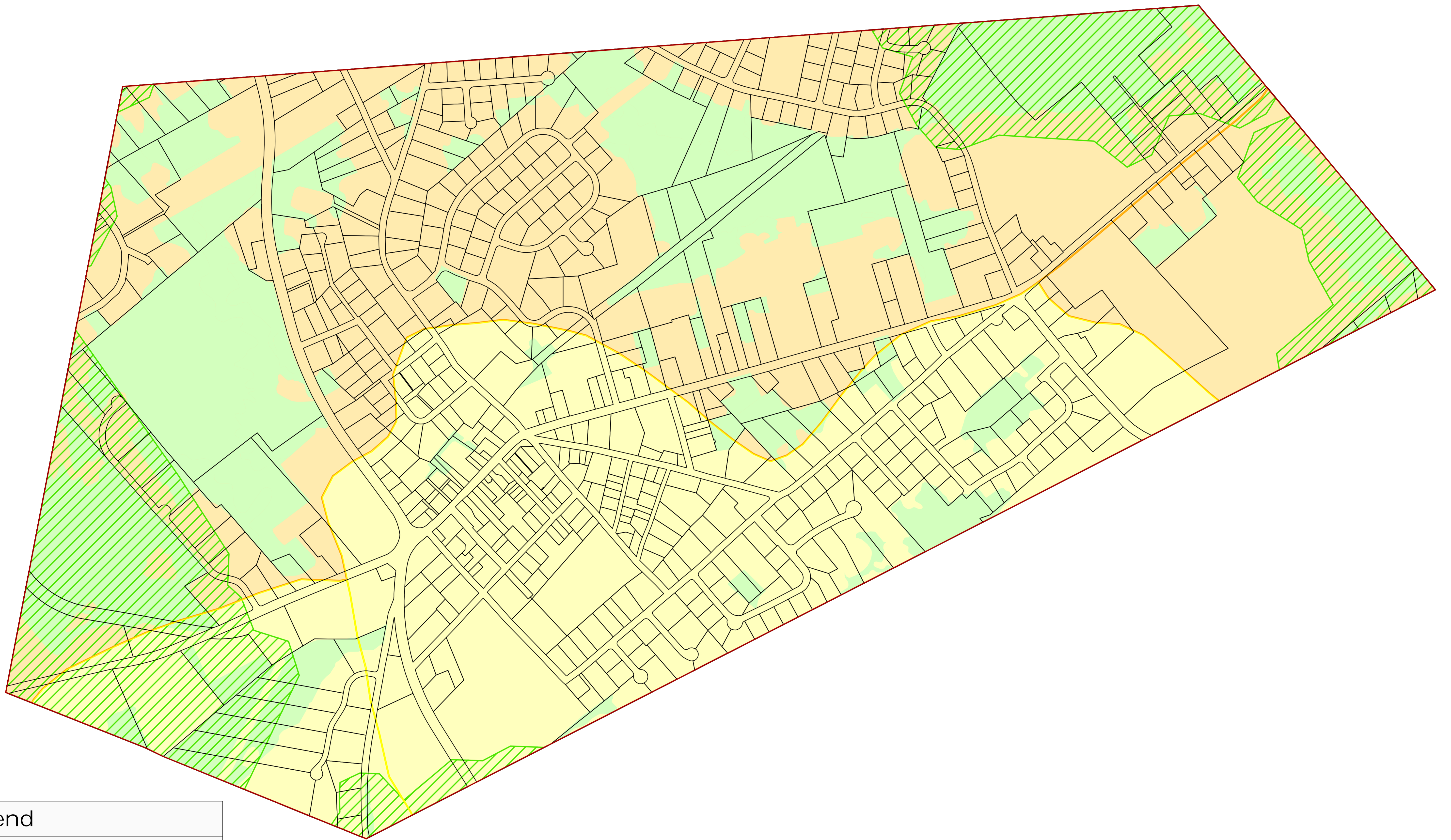


Borough of Chester Highlands Area

Forest Resource Area

Total Forest Area

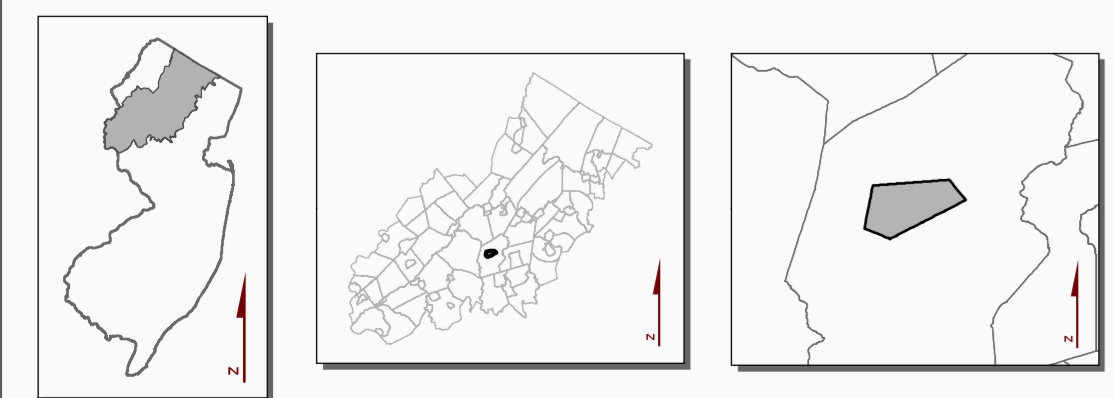
Forest Subwatershed Integrity Areas




## Legend

- Municipal Boundary
- Parcel Boundaries
- Forest Resource Area
- Total Forest Area
- Forest Integrity**  
By HUC14 Subwatershed
- Low*
- Moderate*
- High*

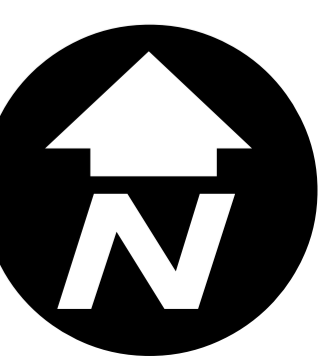
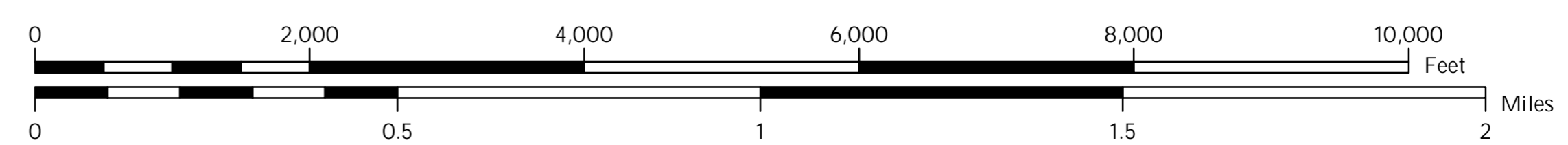
## Locator Maps



**BOROUGH OF CHESTER**  
MORRIS COUNTY, N.J.



MAP PREPARED BY THE NEW JERSEY  
HIGHLANDS COUNCIL, MAY 25, 2016



# Exhibit 3:

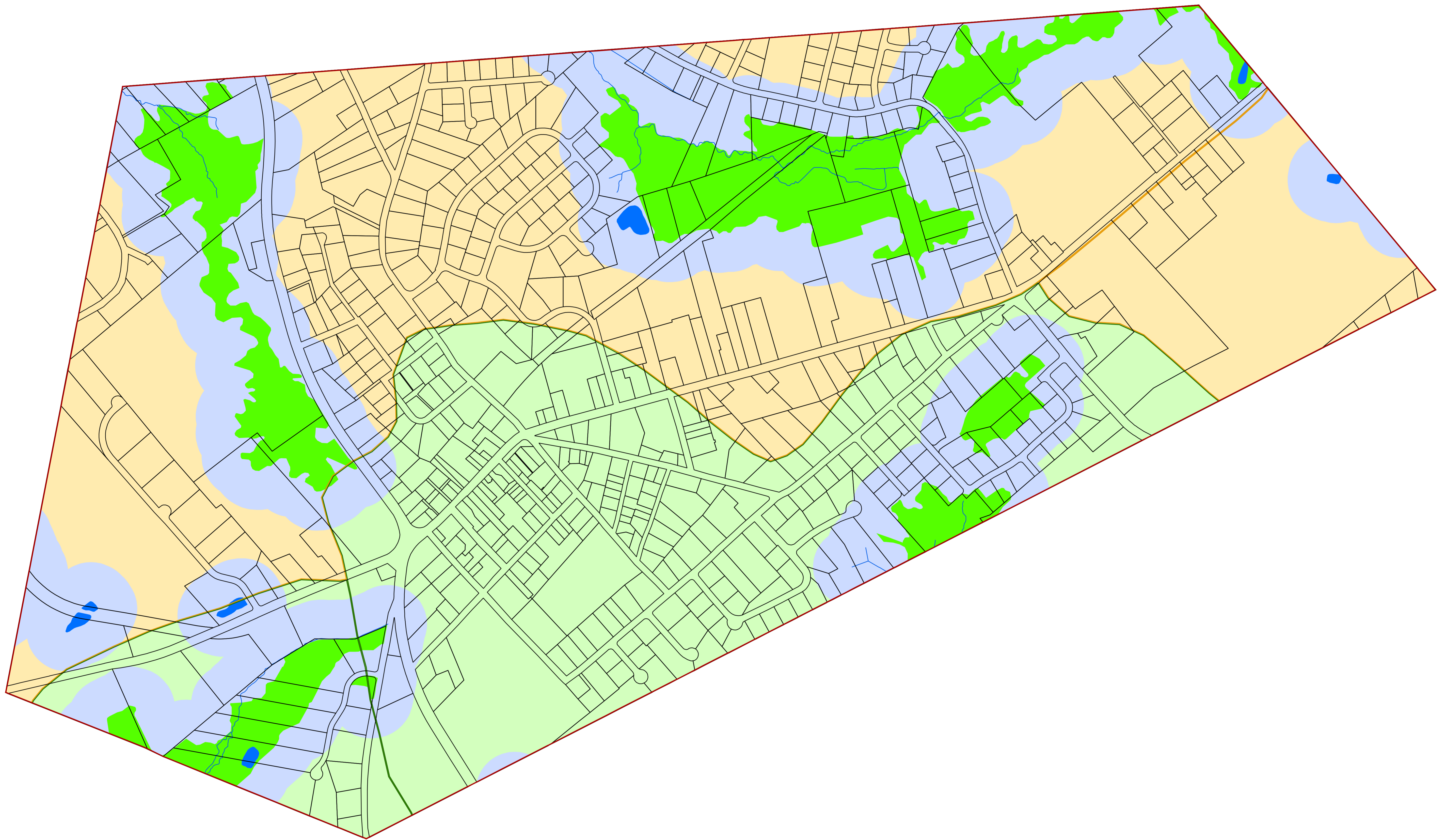
# BOROUGH OF CHESTER, MORRIS COUNTY, NJ



Borough of Chester Highlands Area

Highlands Open Waters

Watershed Resource Value Areas



## Legend

- Municipal Boundary
- Parcel Boundaries
- Lakes & Ponds
- Streams
- Wetlands
- Highlands Open Water Buffers (300ft)

### Watershed Values by HUC14 Subwatershed

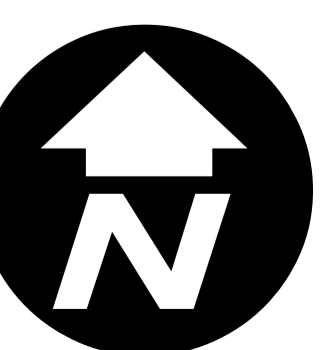
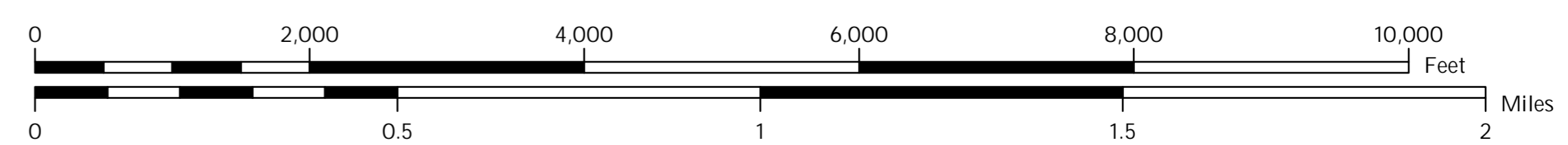
- Moderate
- High

## Locator Maps



**BOROUGH OF CHESTER**  
MORRIS COUNTY, N.J.

MAP PREPARED BY THE NEW JERSEY  
HIGHLANDS COUNCIL, MAY 25, 2016



# Exhibit 4:

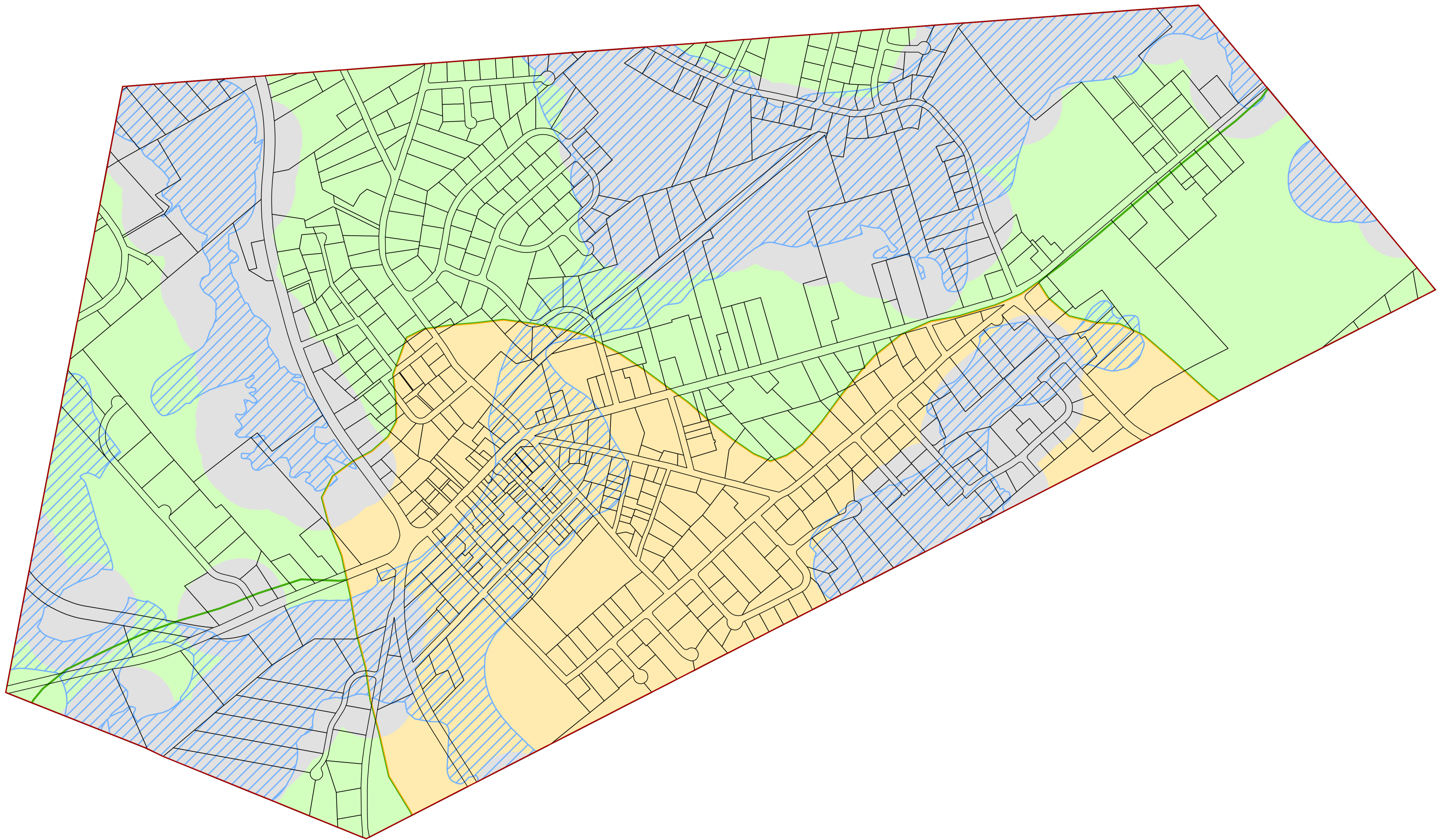
# BOROUGH OF CHESTER, MORRIS COUNTY, NJ



Borough of Chester Highlands Area

Riparian Area

Riparian Subwatershed Integrity Areas



### Legend

- Municipal Boundary
- Parcel Boundaries
- Riparian Area
- Highlands Open Water Buffers (300ft)
- Riparian Integrity**  
By HUC-14 Subwatershed
  - Moderate
  - High

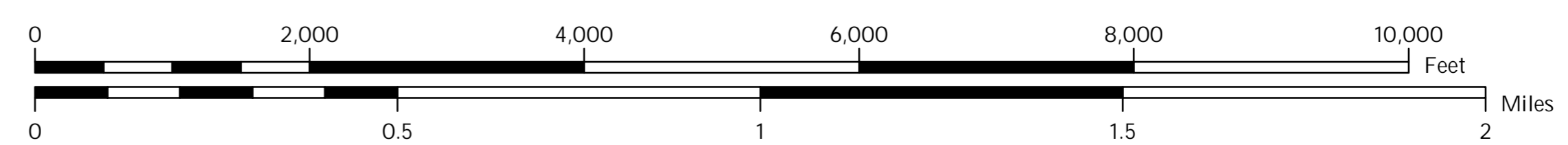
### Locator Maps



**BOROUGH OF CHESTER**  
MORRIS COUNTY, N.J.



MAP PREPARED BY THE NEW JERSEY  
HIGHLANDS COUNCIL, MAY 25, 2016



# Exhibit 5:


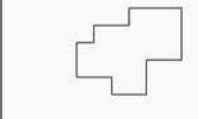



# BOROUGH OF CHESTER, MORRIS COUNTY, NJ

Borough of Chester Highlands Area

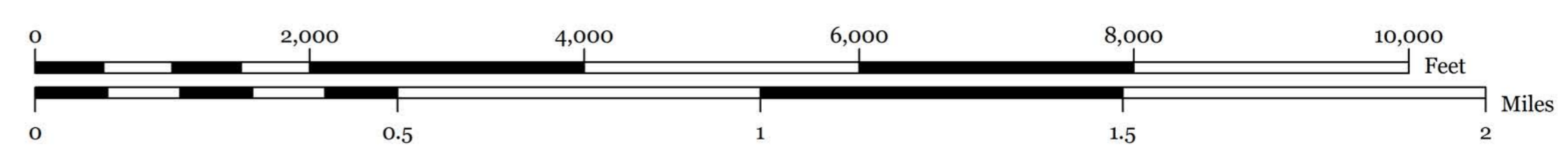
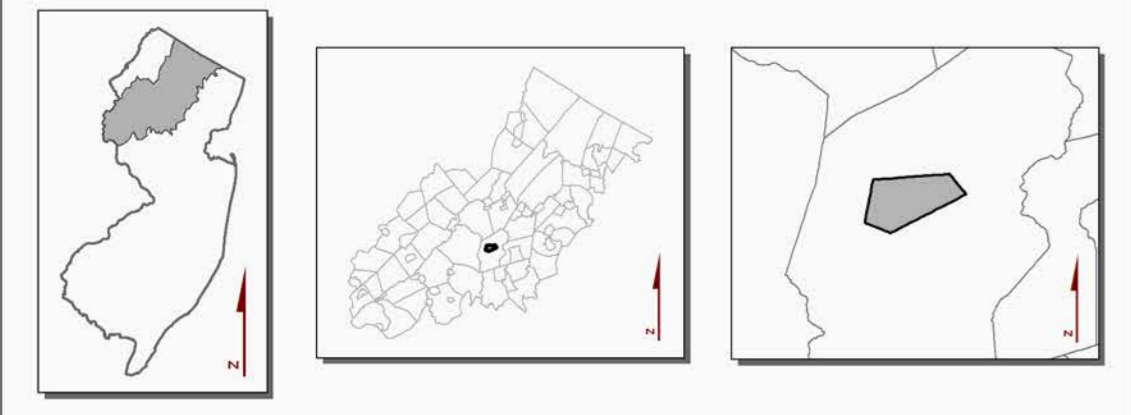
Steep Slope Protection Area



## Legend

-  Municipal Boundary
-  Parcel Boundaries
- Steep Slope Protection Area
  -  Severely Constrained
  -  Moderately Constrained
  -  Constrained/Limited Constrained

## Locator Maps

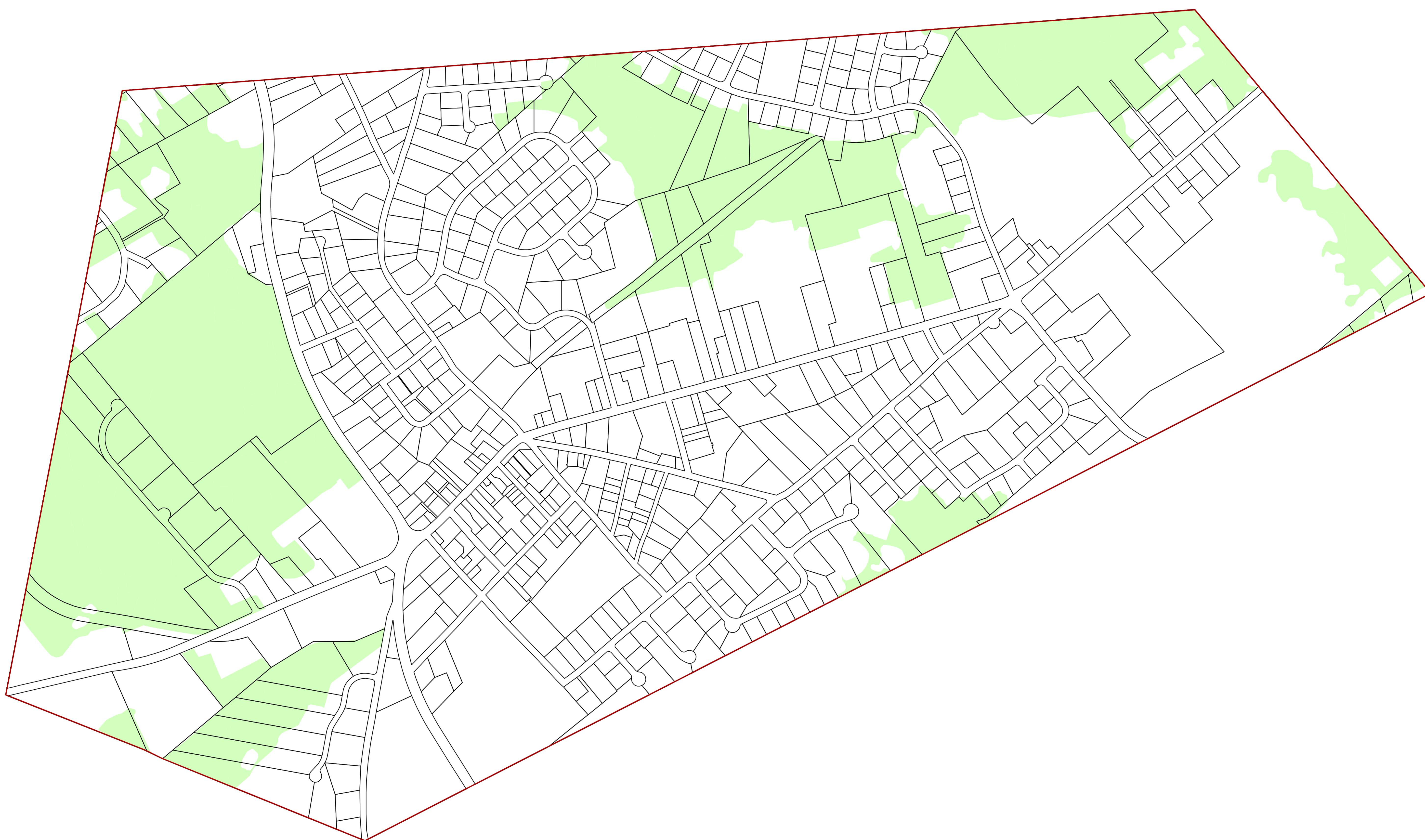


# Exhibit 6:

Borough of Chester Highlands Area

Critical Wildlife Habitat

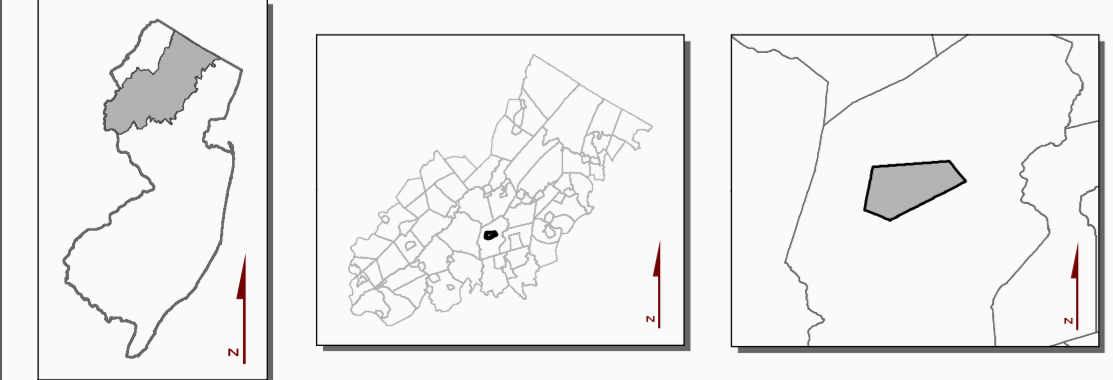
# BOROUGH OF CHESTER, MORRIS COUNTY, NJ




### Legend

- Municipal Boundary
- Parcel Boundaries
- Critical Wildlife Habitat

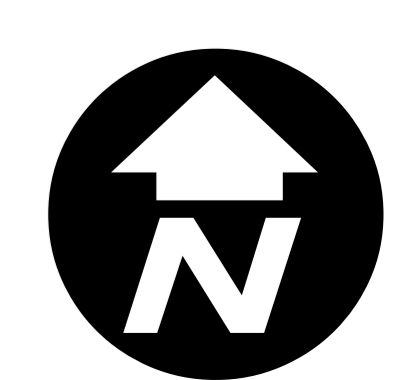
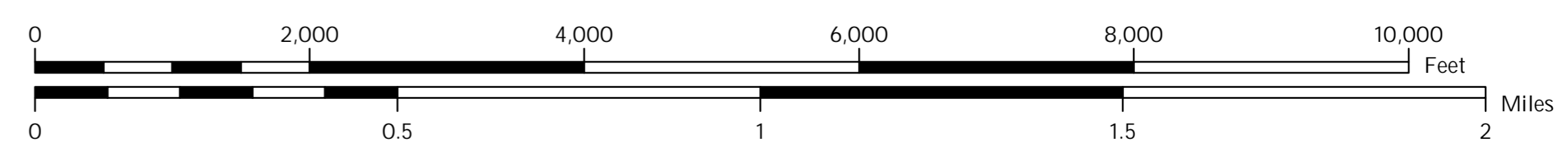
### Locator Maps



**BOROUGH OF CHESTER**  
MORRIS COUNTY, N.J.



MAP PREPARED BY THE NEW JERSEY  
HIGHLANDS COUNCIL, MAY 25, 2016



# Exhibit 7:

# BOROUGH OF CHESTER, HUNTERDON COUNTY, NJ

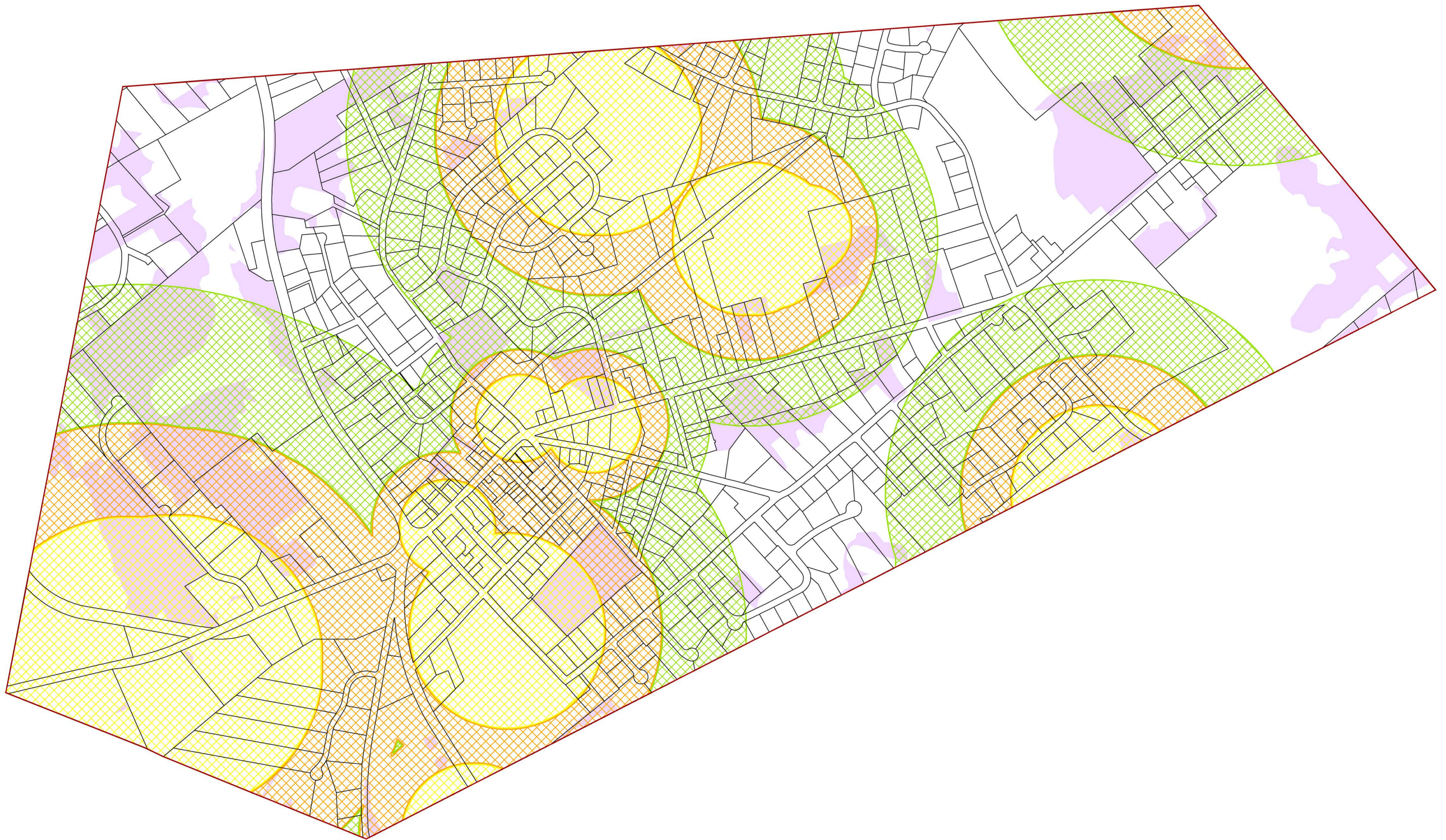


Borough of Chester Highlands Area

Carbonate Rock Area

Prime Ground Water Recharge Area

Wellhead Protection Areas



### Legend

- Municipal Boundary
- Parcel Boundaries
- Carbonate Rock Areas
- Prime Ground Water Recharge Areas
- Wellhead Protection Areas**
  - (Tier 1) 2-Year
  - (Tier 2) 5-Year
  - (Tier 3) 12-Year

### Locator Maps



**BOROUGH OF CHESTER**  
MORRIS COUNTY, N.J.



MAP PREPARED BY THE NEW JERSEY  
HIGHLANDS COUNCIL, MAY 25, 2016

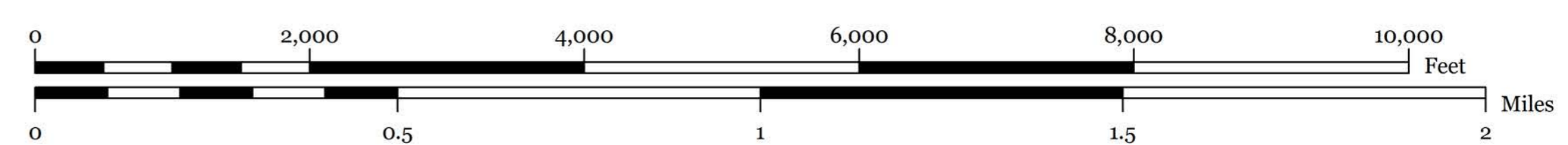


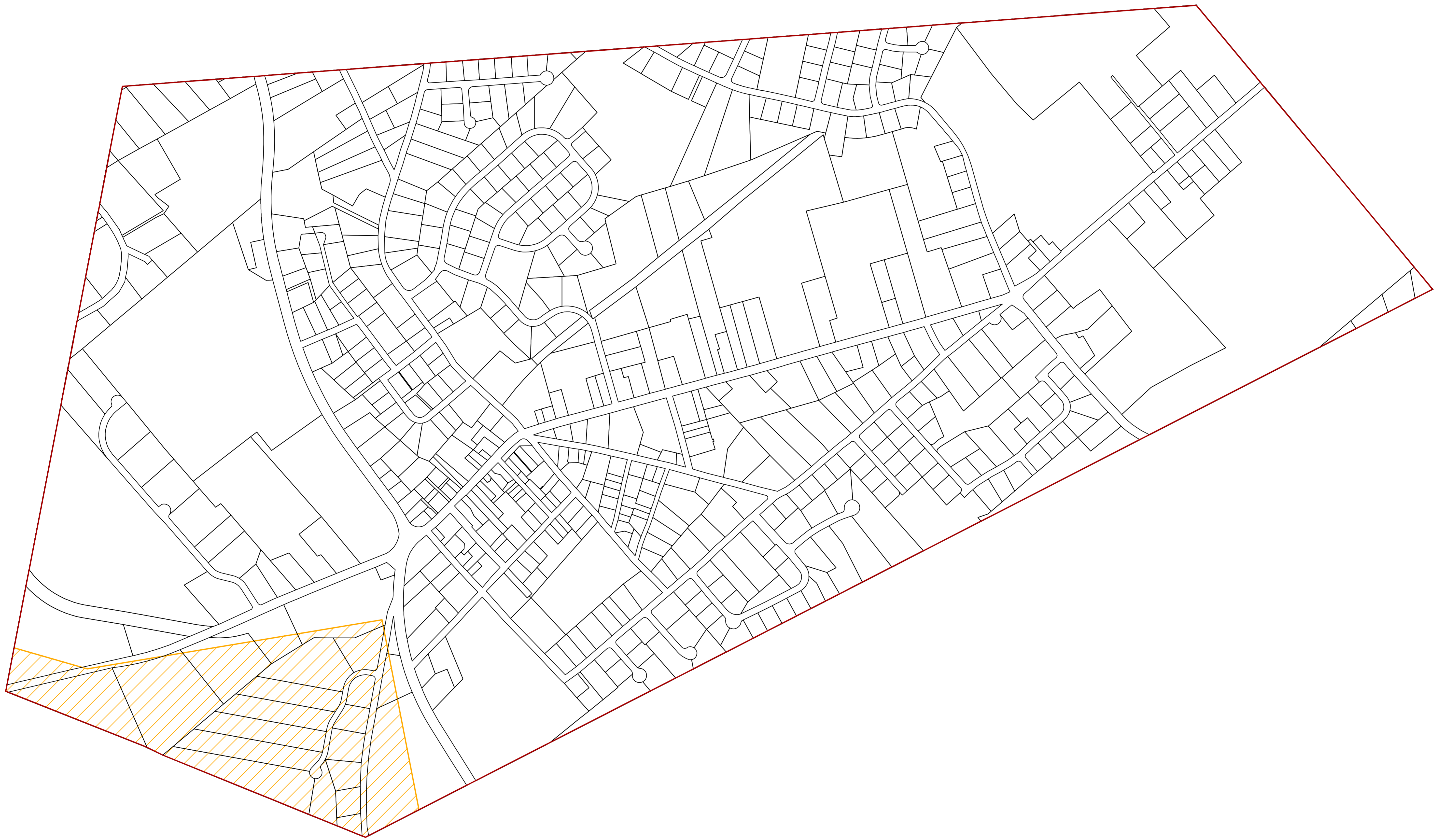
Exhibit 8:

BOROUGH OF CHESTER, MORRIS COUNTY, NJ



Borough of Chester Highlands Area

Agricultural Resource Area



Legend

- Municipal Boundary
- Parcel Boundaries
- Agricultural Resource Area

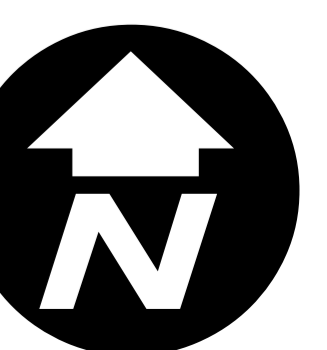
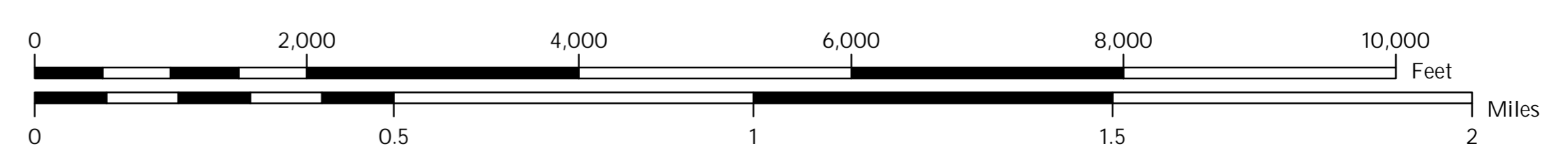
Locator Maps



BOROUGH OF  
**CHESTER**  
MORRIS COUNTY, N.J.



MAP PREPARED BY THE NEW JERSEY  
HIGHLANDS COUNCIL, MAY 25, 2016





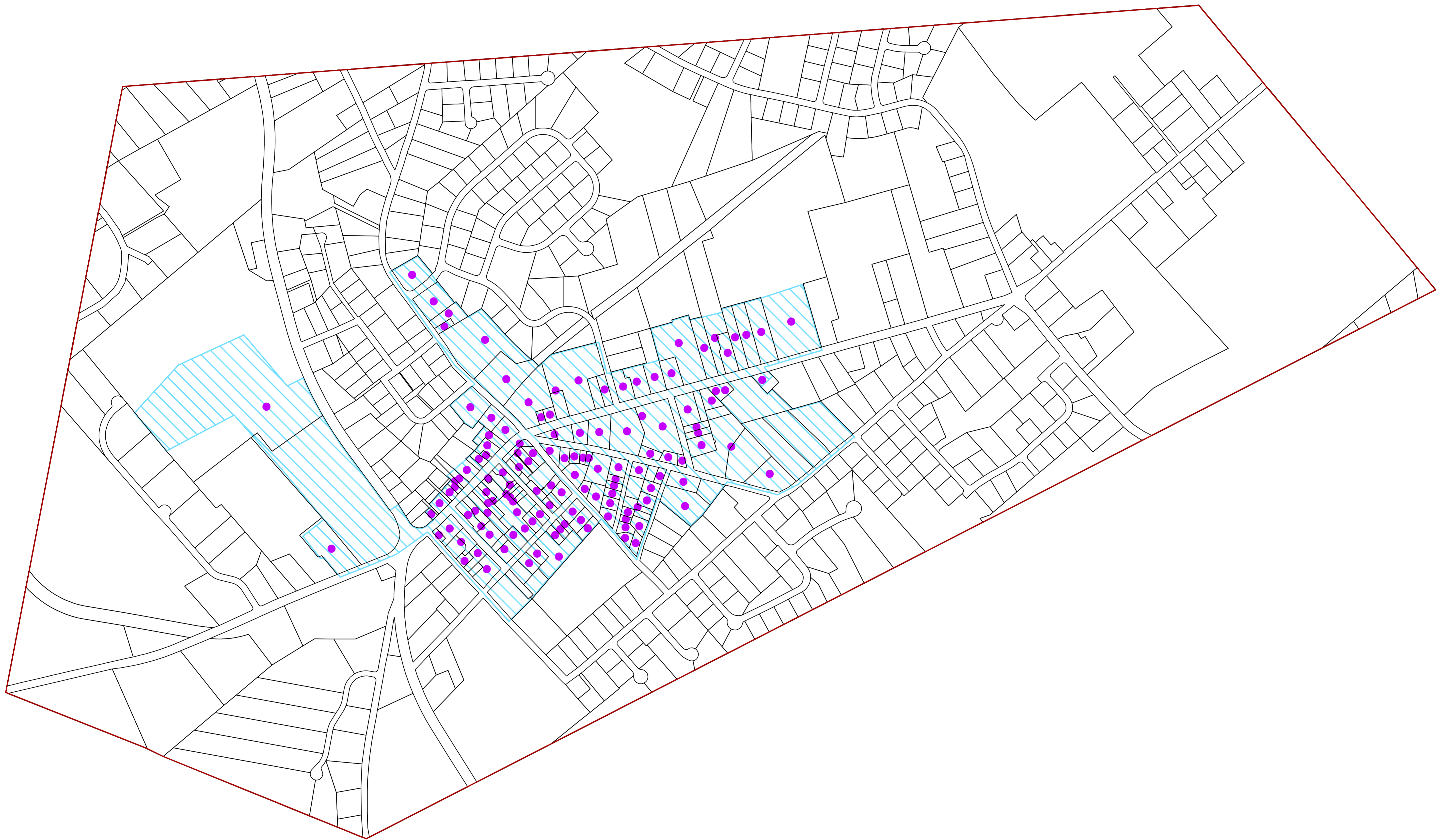
# Exhibit 9:

# BOROUGH OF CHESTER, MORRIS COUNTY, NJ



Borough of Chester Highlands Area

Highlands Historic, Cultural  
and Archaeological Resources  
Highlands Scenic Resources



## Legend

- Municipal Boundary
- Parcel Boundaries
- Scenic Resources
- Historic Properties
- NJ Historic Districts

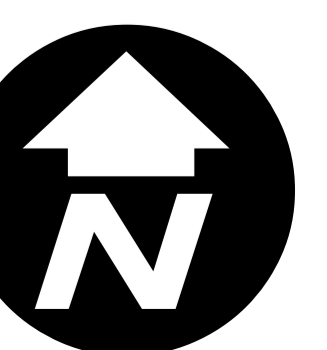
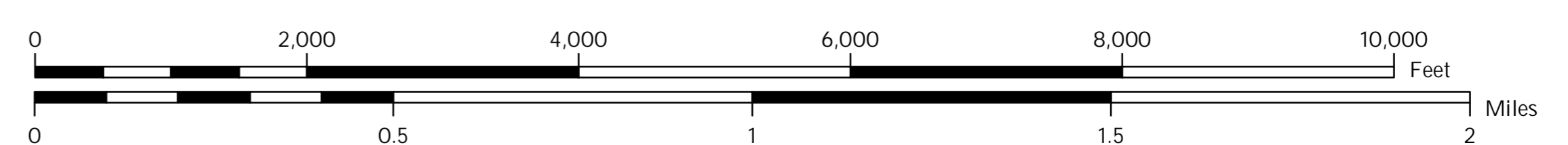
## Locator Maps



BOROUGH OF  
**CHESTER**  
MORRIS COUNTY, N.J.



MAP PREPARED BY THE NEW JERSEY  
HIGHLANDS COUNCIL, MAY 25, 2016



# Exhibit 10:

# BOROUGH OF CHESTER, MORRIS COUNTY, NJ

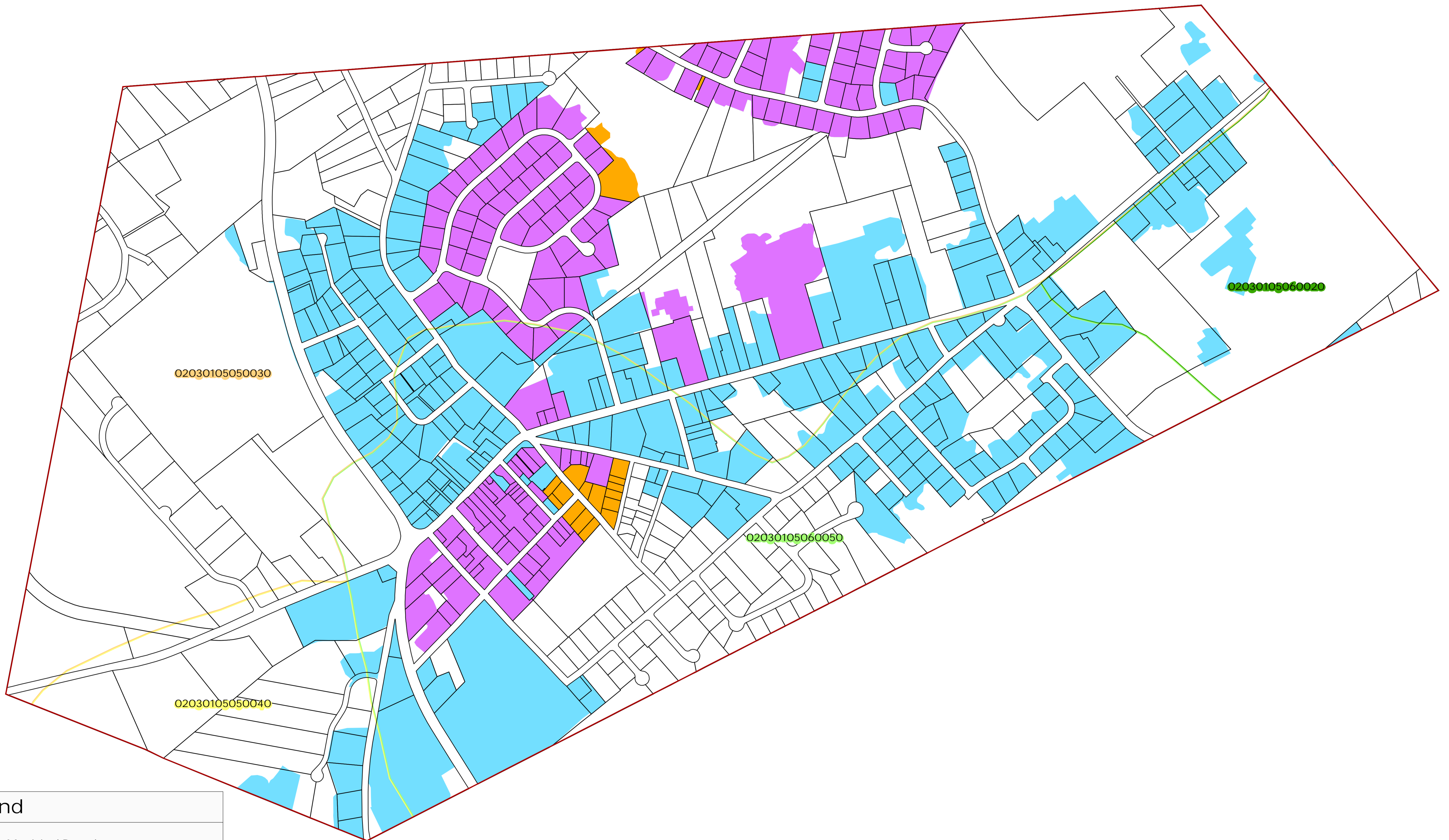


Borough of Chester Highlands Area

Net Water Availability by HUC-14 Subwatershed

Highlands Domestic Sewerage Facilities

Public Community Water Systems



## Legend

- Municipal Boundary
- Parcel Boundaries
- Existing Area Served for:
  - Public Community Water Systems
  - Highlands Domestic Sewerage Facilities
  - Highlands Domestic Sewerage Facilities and Public Community Water Systems
- Net Water Availability By HUC14 Subwatershed  
Million Gallons Per Day (MGD)
  - 0.05 - 0.09
  - 0.00 - 0.04
  - 0.09 - -0.01
  - 0.99 - -0.10

## Locator Maps



**BOROUGH OF CHESTER**  
MORRIS COUNTY, N.J.

MAP PREPARED BY THE NEW JERSEY  
HIGHLANDS COUNCIL, MAY 25, 2016

