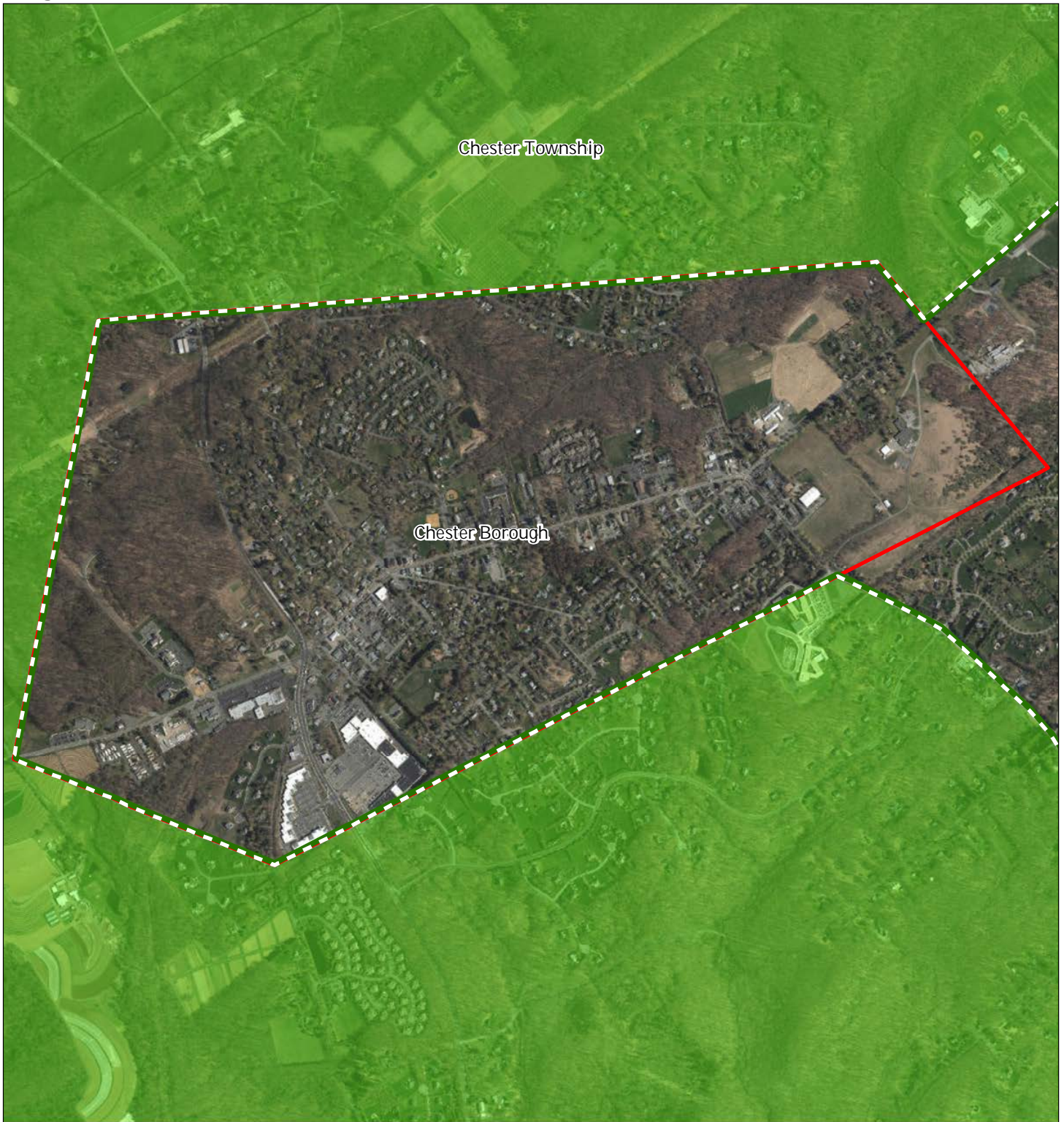


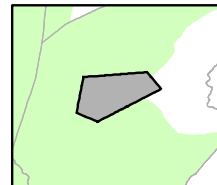
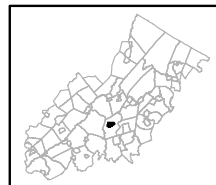


Figure 1: Preservation Area



-  Preservation Area
-  Municipal Boundaries

Chester Borough



1 inch = 0.263 miles



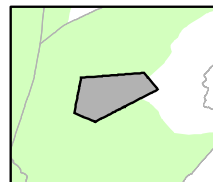
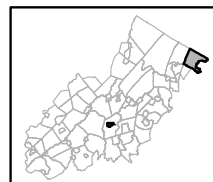
Figure 2: Land Use Capability Map Zones



Regional Master Plan Overlay Zone Designation

- | | |
|--|-----------------------------|
| Zone | |
| Protection | Lakes Greater Than 10 acres |
| Conservation | Preservation Area |
| Existing Community | Municipal Boundaries |
| Sub-Zone | |
| Existing Community Environmentally Constrained | |
| Conservation Environmentally Constrained | |
| Lake Community | |
| Wildlife Management | |

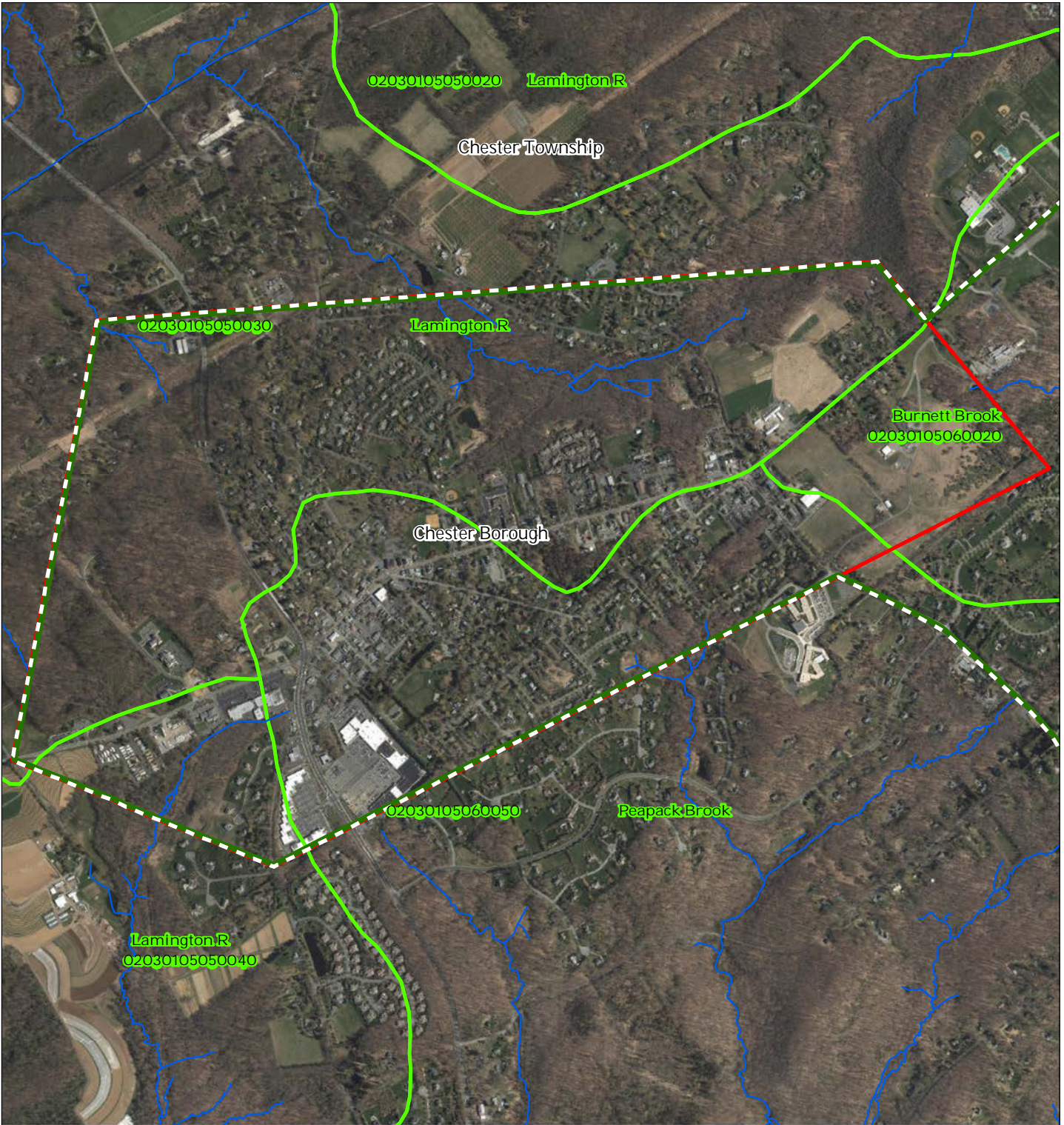
Chester Borough



1 inch = 0.263 miles

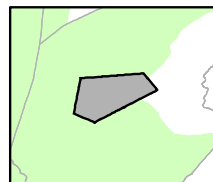
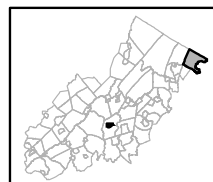


Figure 3: HUC 14 Boundaries



- HUC 14 Subwatersheds
- Stream Centerlines
- Preservation Area
- Municipal Boundaries

Chester Borough






1 inch = 0.263 miles

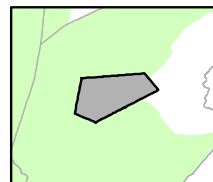
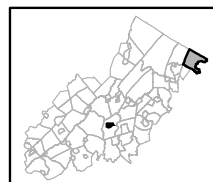


Figure 4: Forest Resource Area



-  Forest Resource Area
-  Preservation Area
-  Municipal Boundaries

Chester Borough






1 inch = 0.263 miles

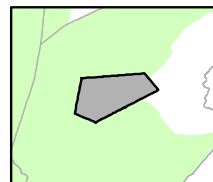
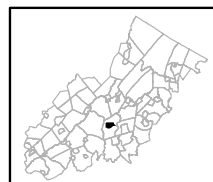


Figure 5: Total Forest Area



-  Forested Areas
-  Preservation Area
-  Municipal Boundaries

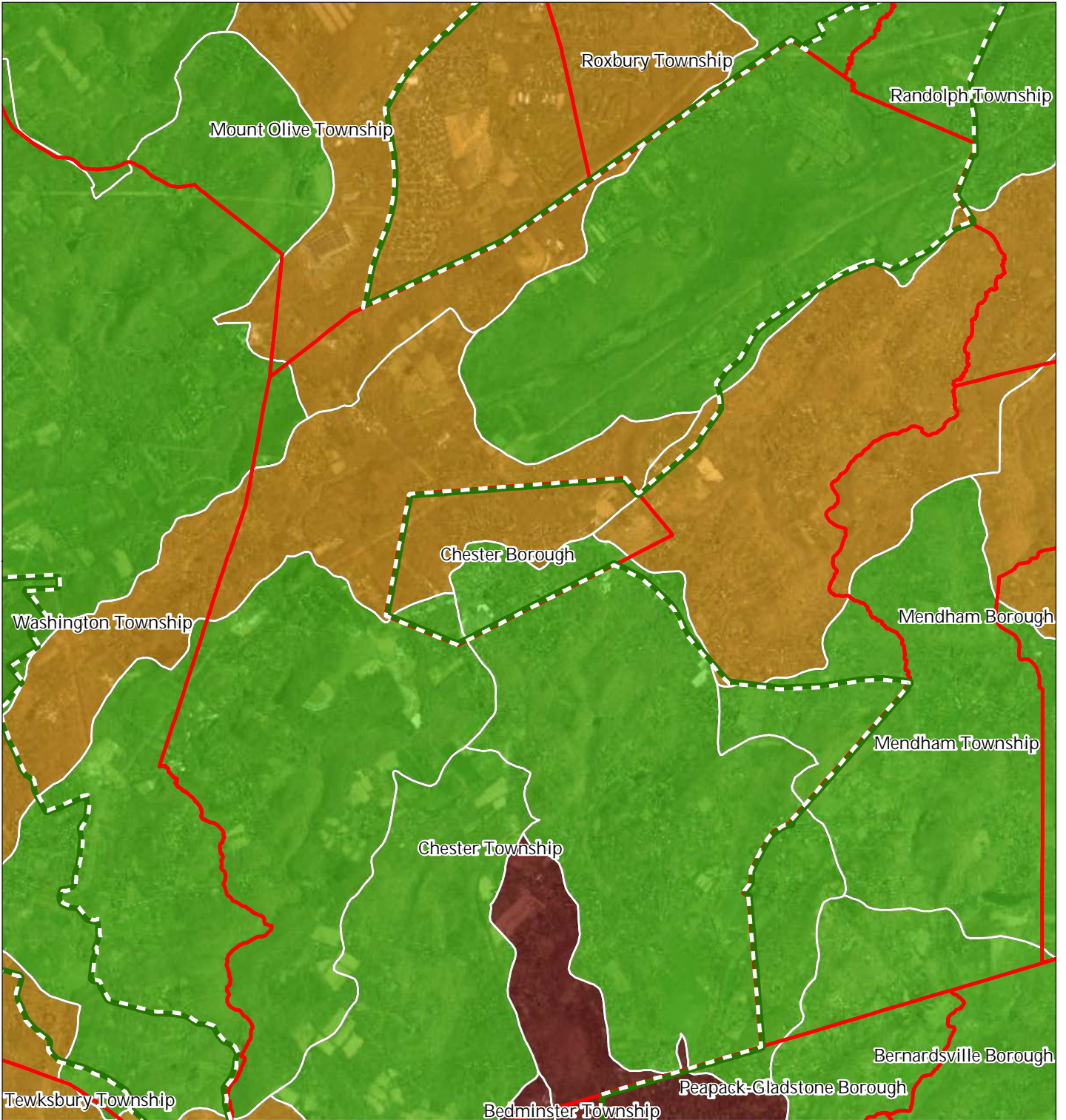
Chester Borough








1 inch = 0.263 miles



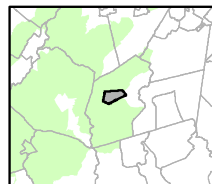
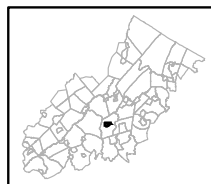
Figure 6: Forest Subwatersheds



Forest Integrity by HUC14 Subwatershed

-  *Low*
-  *Moderate*
-  *High*
-  Preservation Area
-  Municipal Boundaries

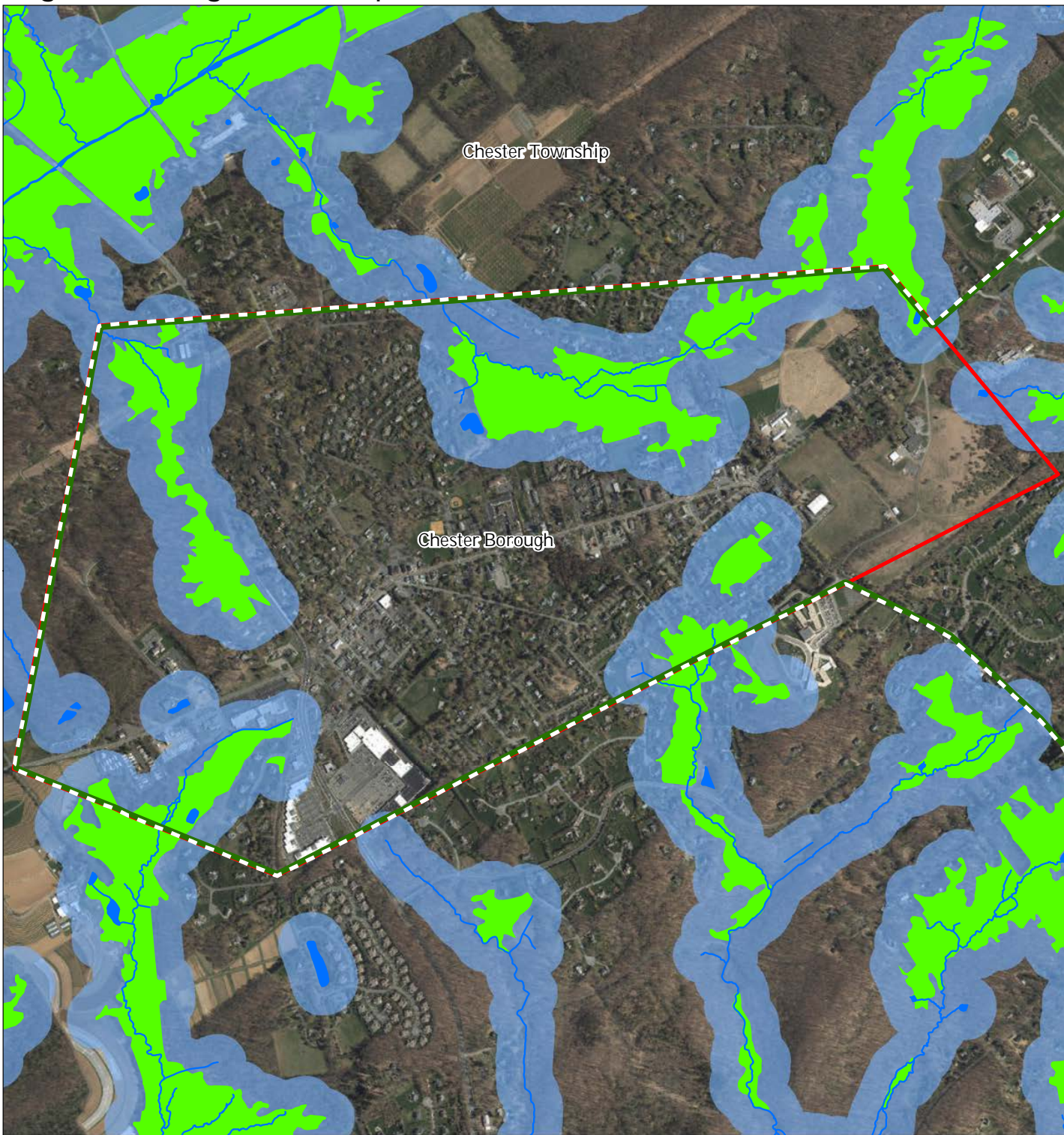
Mahwah Township



1 inch = 0.948 miles

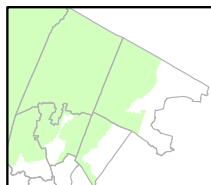
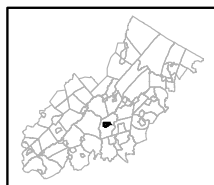


Figure 7: Highlands Open Waters



-  Highlands Open Water Buffers (300ft)
-  Streams
-  Wetlands
-  Lakes & Ponds
-  Preservation Area
-  Municipal Boundaries

Chester Borough



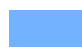


1 inch = 0.263 miles

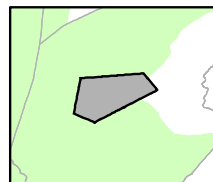
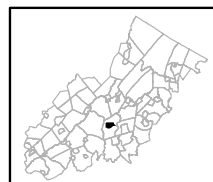


Figure 8: Highlands Riparian Areas



Chester Borough

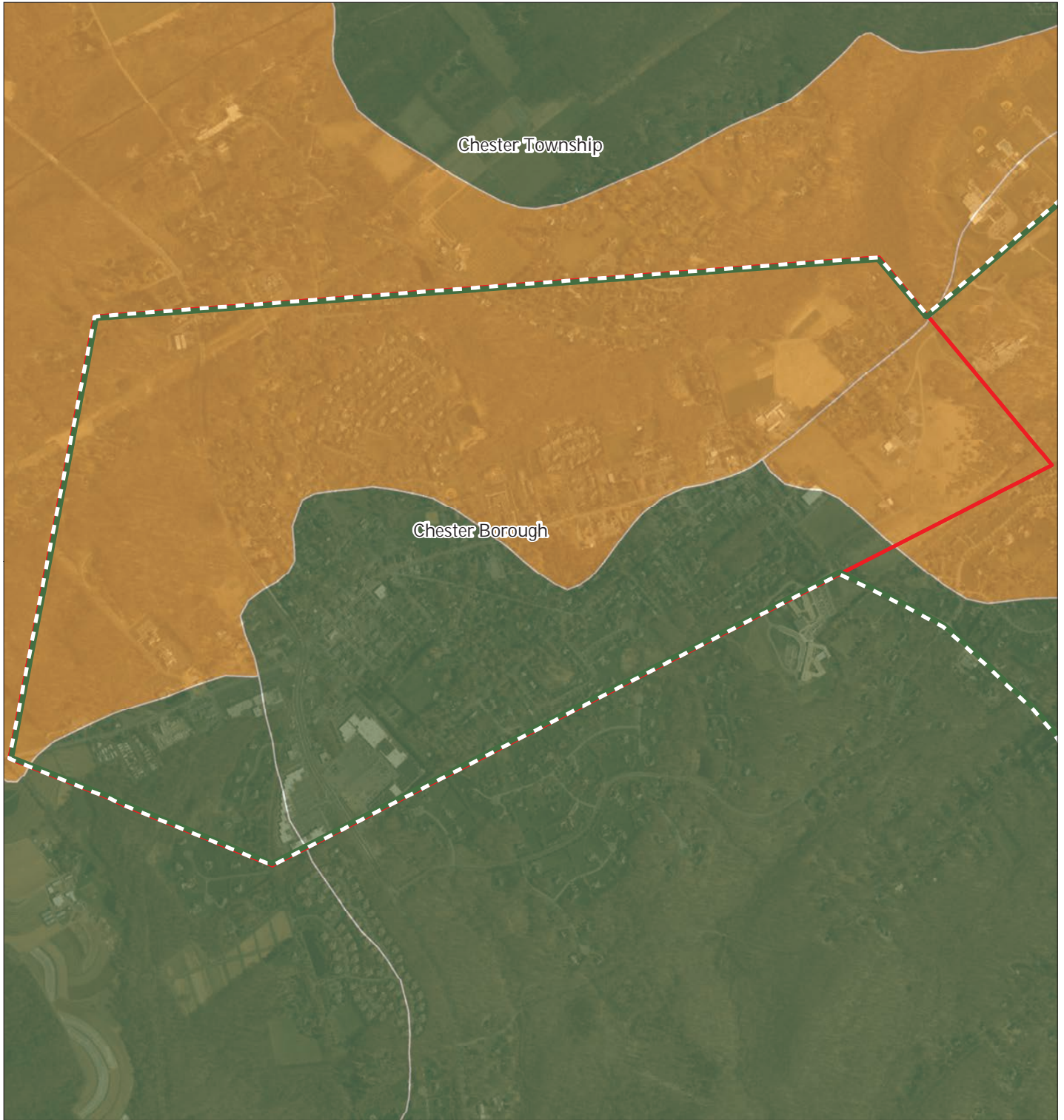
-  Riparian Area
-  Preservation Area
-  Municipal Boundaries








1 inch = 0.263 miles



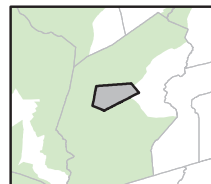
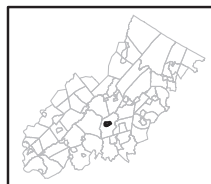
Figure 9: Watershed Values



Watershed Values by HUC14 Subwatershed

-  *Low*
-  *Moderate*
-  *High*
-  Preservation Area
-  Municipal Boundaries

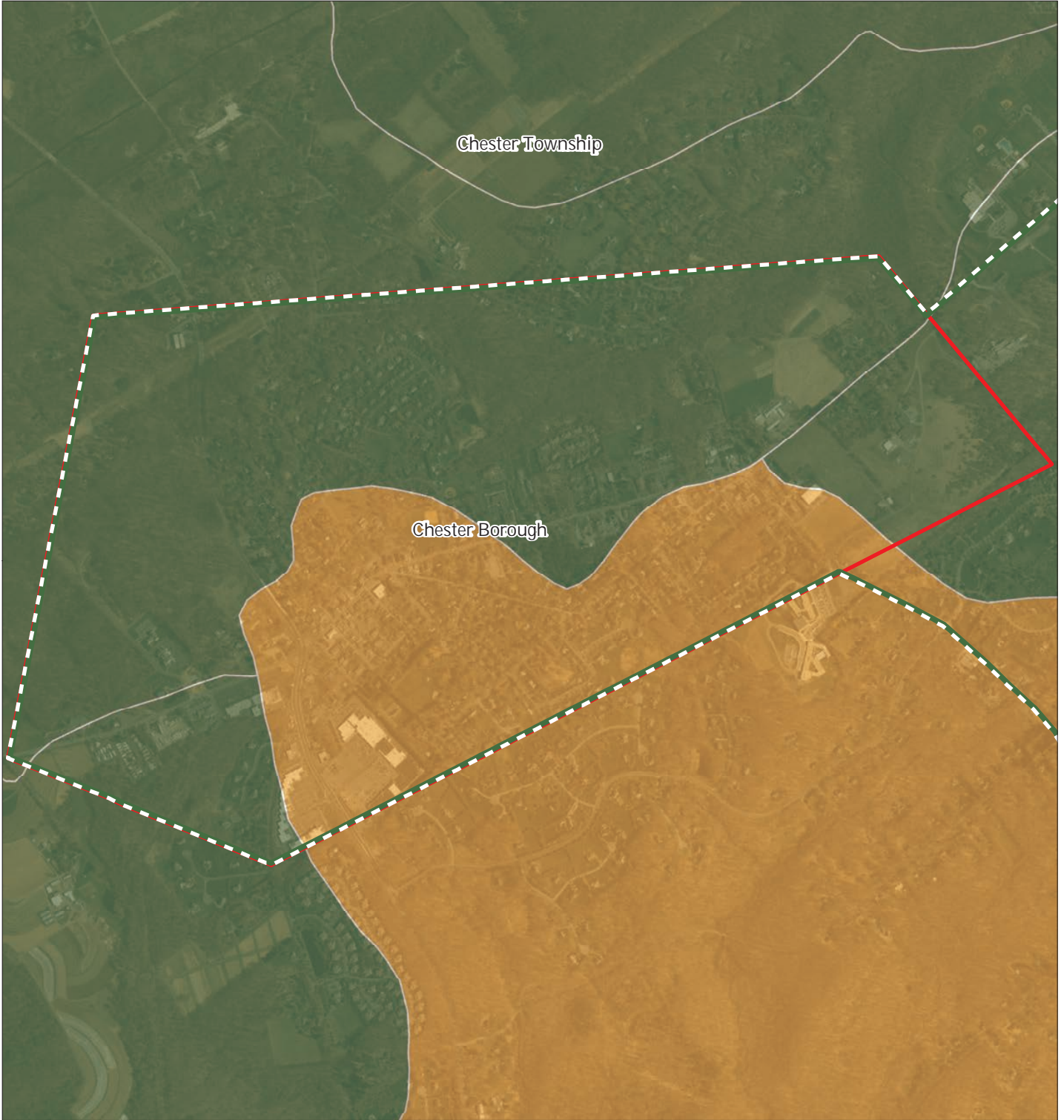
Chester Borough








1 inch = 0.261 miles



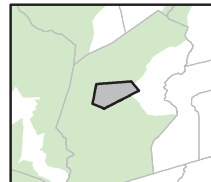
Figure 10: Riparian Integrity



Riparian Integrity by HUC14 Subwatershed

-  *Low*
-  *Moderate*
-  *High*
-  Preservation Area
-  Municipal Boundaries

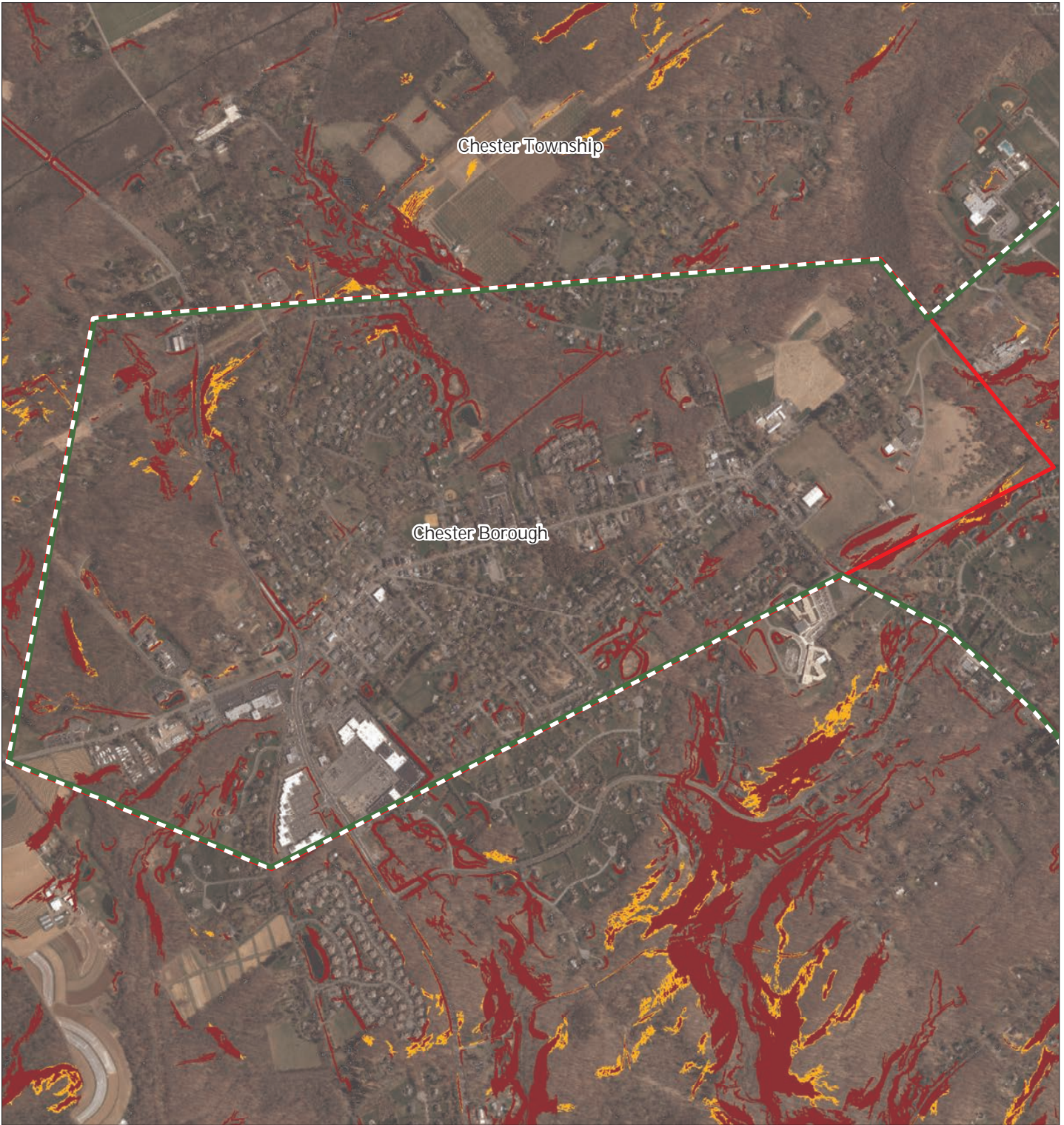
Chester Borough







1 inch = 0.261 miles



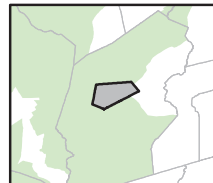
Figure 11: Steep Slope Protection Areas



Steep Slopes

-  Moderate
-  Severe
-  Preservation Area
-  Municipal Boundaries

Chester Borough






1 inch = 0.261 miles

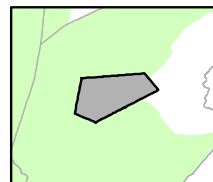
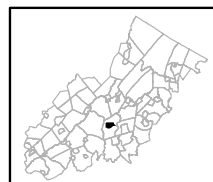


Figure 12: Critical Wildlife Habitat



-  Critical Wildlife Habitat
-  Preservation Area
-  Municipal Boundaries

Chester Borough






1 inch = 0.263 miles

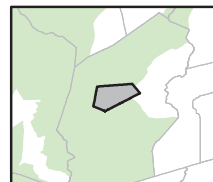
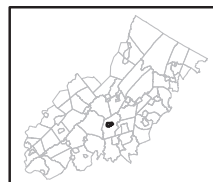


Figure 13: Significant Natural Areas



-  Significant Natural Areas
-  Preservation Area
-  Municipal Boundaries

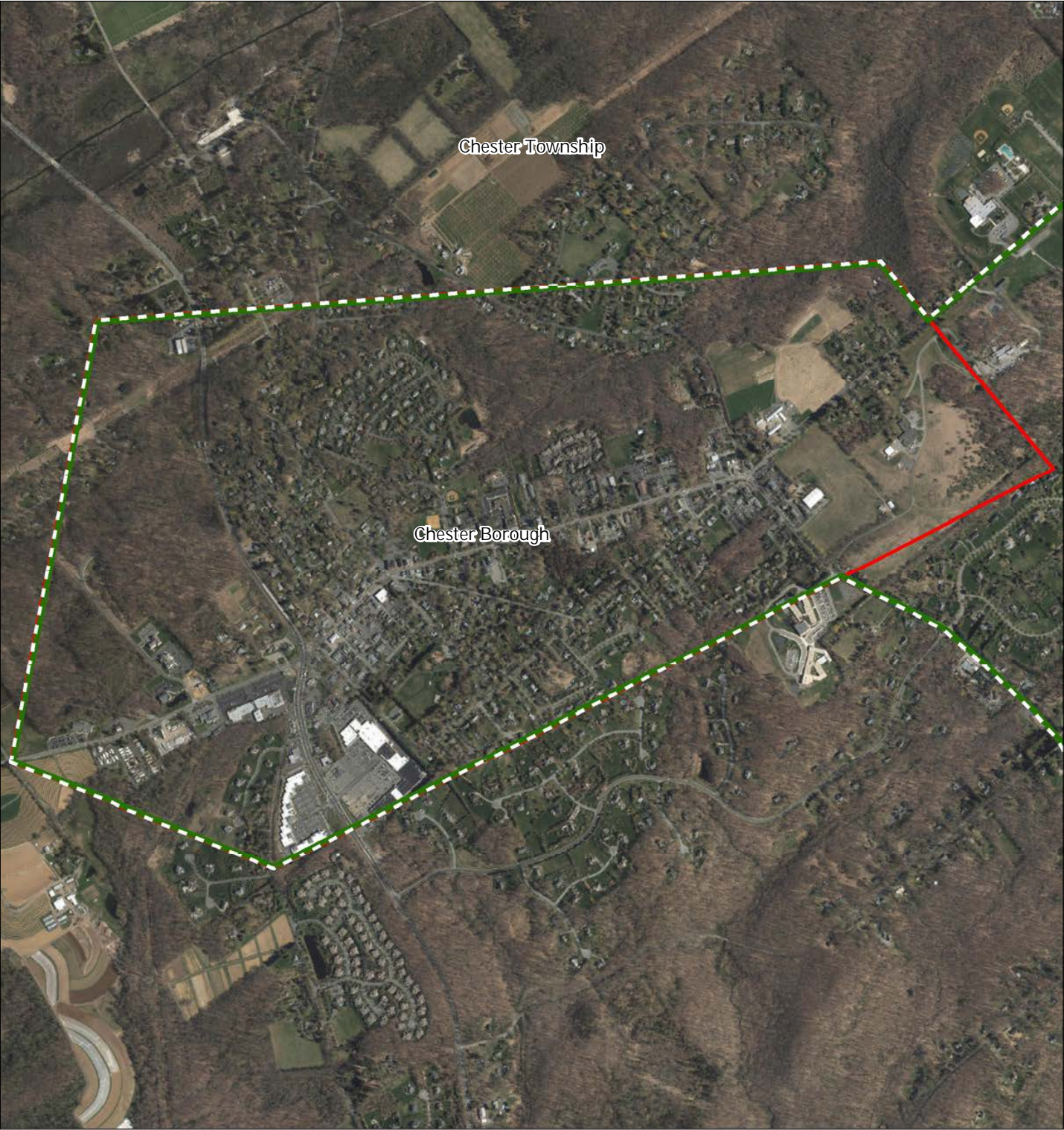
Chester Borough







1 inch = 0.261 miles

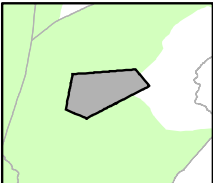
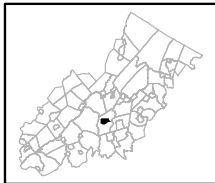


Figure 14: Vernal Pools



-  Vernal Pools + 1000ft Buffer
-  Critical Freshwater Mussel Habitat
-  Preservation Area
-  Municipal Boundaries

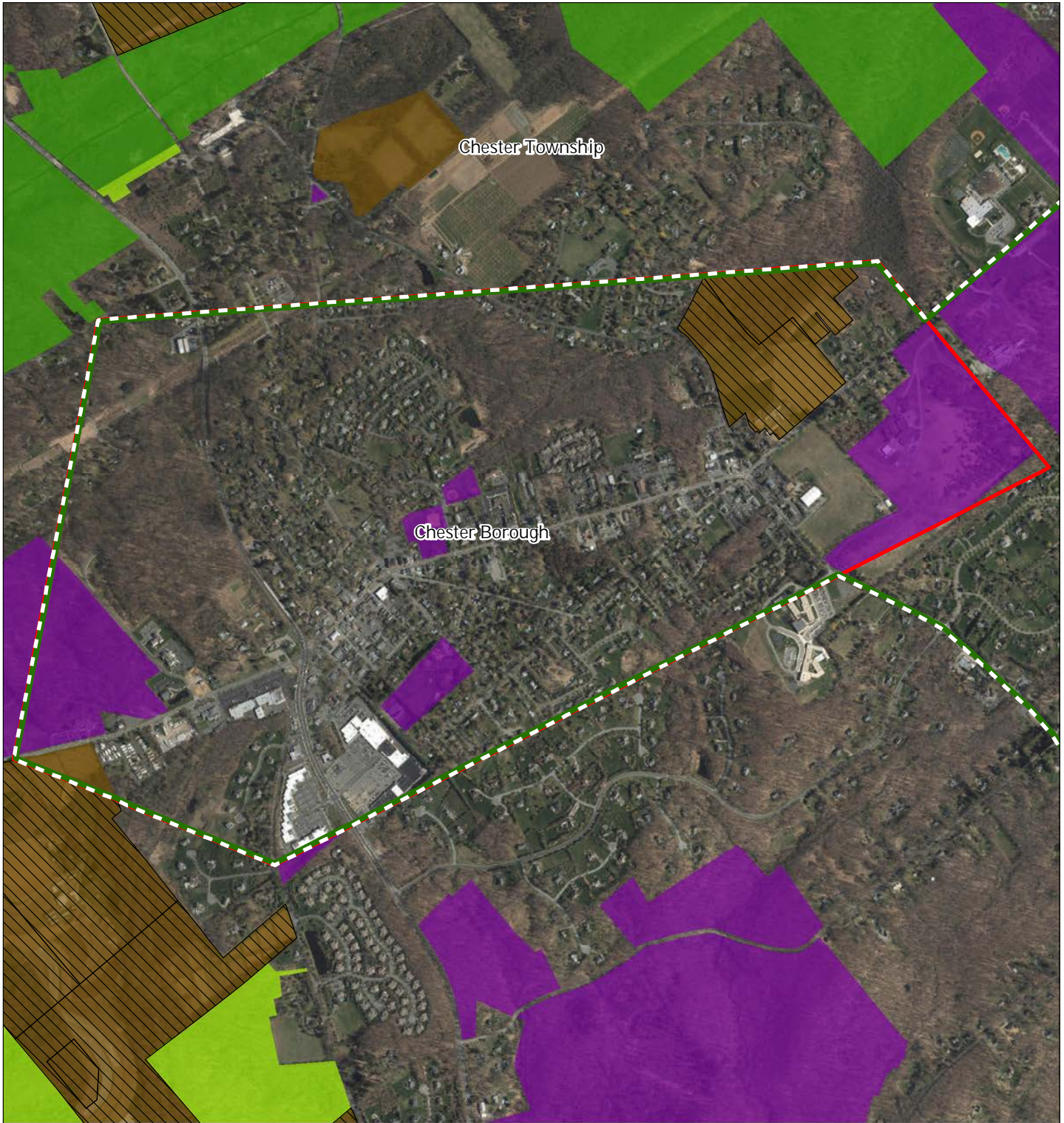
Chester Borough



1 inch = 0.263 miles



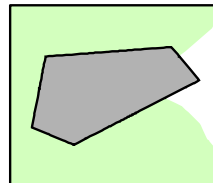
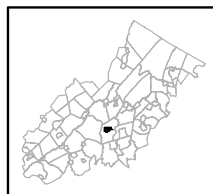
Figure 15: Preserved Lands



- Preserved Lands**
- Federal Open Space
 - State Open Space
 - County Open Space
 - Municipal Open Space
 - Non-Profit/Private Open Space
 - Water Supply Watershed Lands
 - Preserved Farmland
 - Highlands Transfer of Development Lands

- Conservation Easements**
- ▬▬▬ Green Acres
- SADC Easements**
- SADC Final
 - SADC Preserved
 - Municipal Boundaries
 - Preservation Area

Chester Borough







1 inch = 0.263 miles



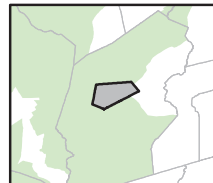
Figure 16: Highlands Conservation Priority Areas



Conservation Priority Area

-  Moderate
-  High
-  Preservation Area
-  Municipal Boundaries

Chester Borough






1 inch = 0.261 miles

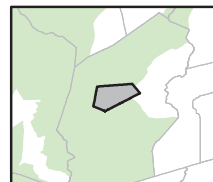
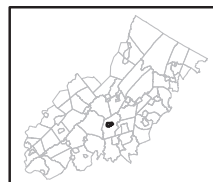


Figure 17: Highlands Special Environmental Zone



-  Special Environmental Zones
-  Preservation Area
-  Municipal Boundaries

Chester Borough






1 inch = 0.261 miles

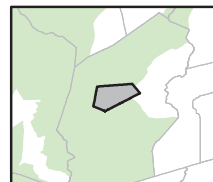
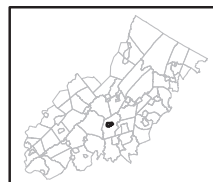


Figure 18: Carbonate Rock Areas



-  Carbonate Rock Area
-  Preservation Area
-  Municipal Boundaries

Chester Borough







1 inch = 0.261 miles

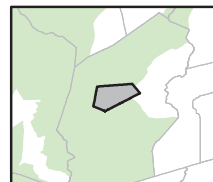
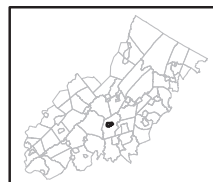


Figure 19: Lake Management Area



-  Lakes & Ponds
-  Lake Management Area
-  Preservation Area
-  Municipal Boundaries

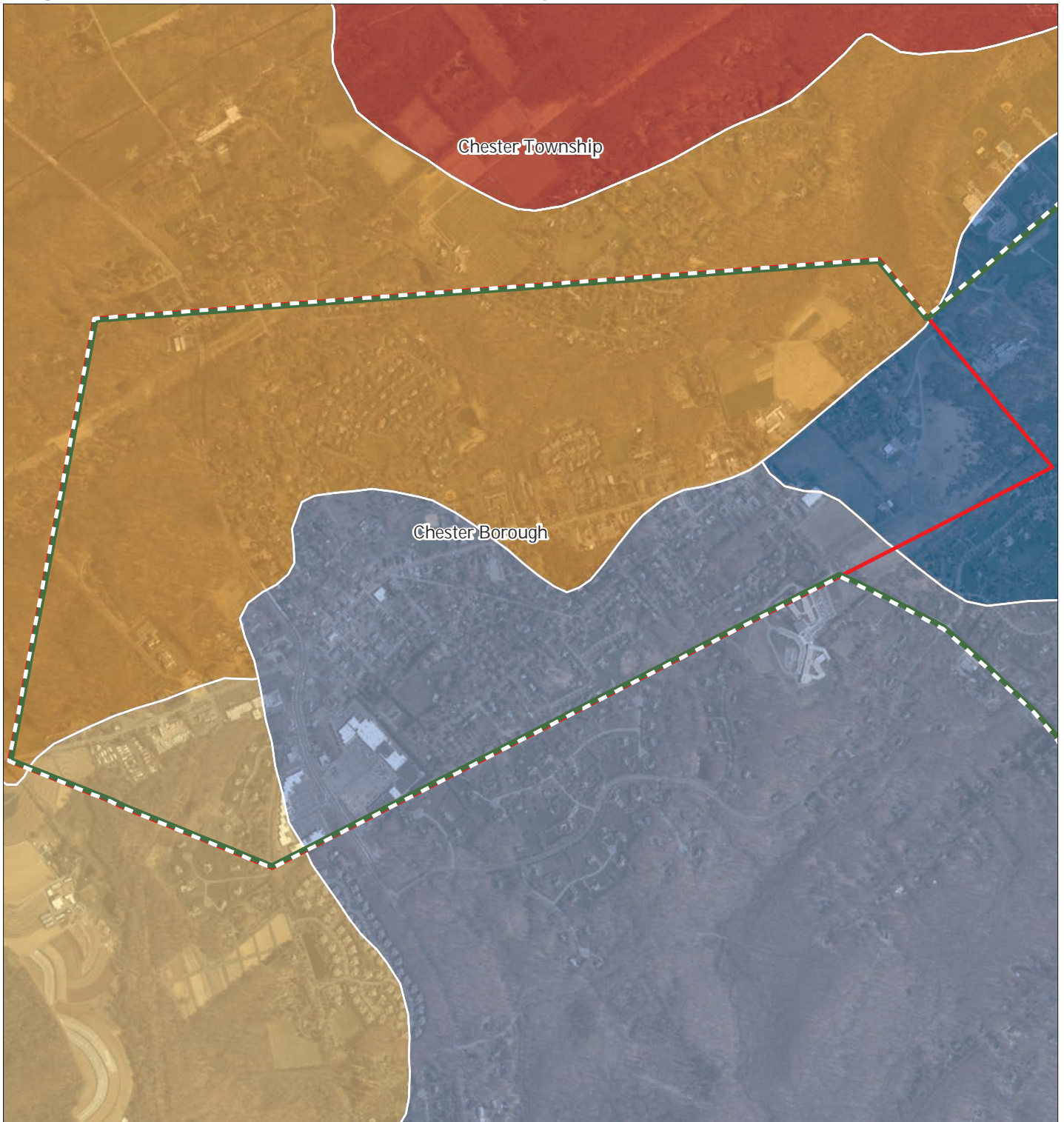
Chester Borough



1 inch = 0.261 miles



Figure 20: Net Water Availability



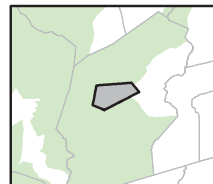
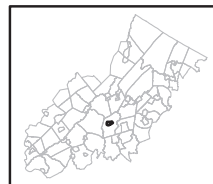
Net Water Availability By HUC14

Million Gallons Per Day (MGD)

- 0.10 - 0.39
- 0.05 - 0.09
- 0.00 - 0.04
- 0.09 - 0.00
- 0.99 - -0.10
- 7.10 - -1.00

- Preservation Area
- Municipal Boundaries

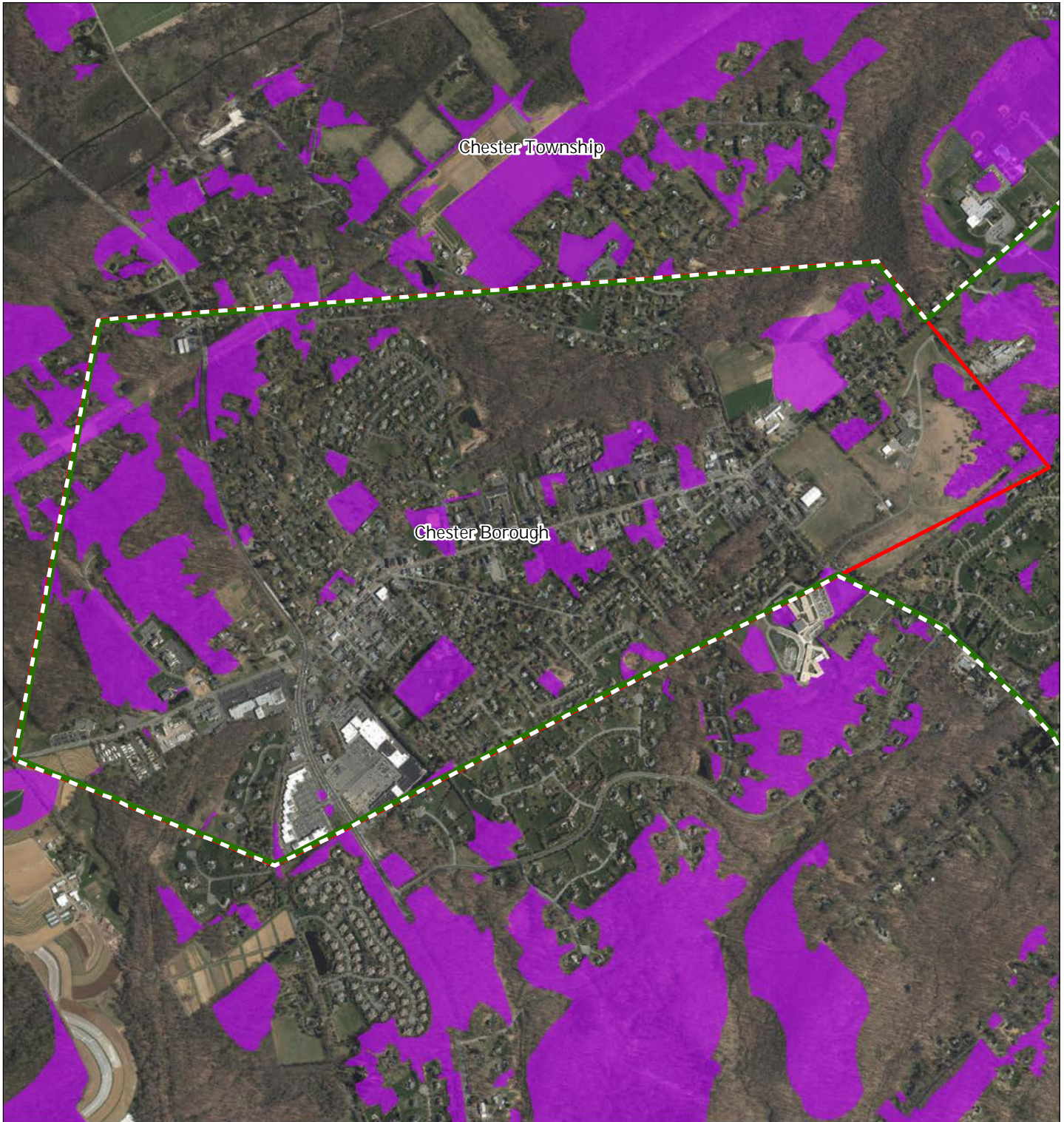
Mahwah Township






1 inch = 0.261 miles

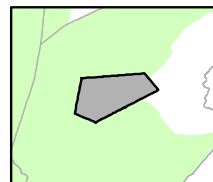
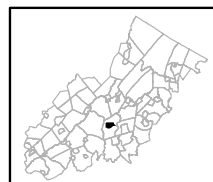


Figure 21: Prime Ground Water Recharge Areas



-  Prime Ground Water Recharge Areas
-  Preservation Area
-  Municipal Boundaries

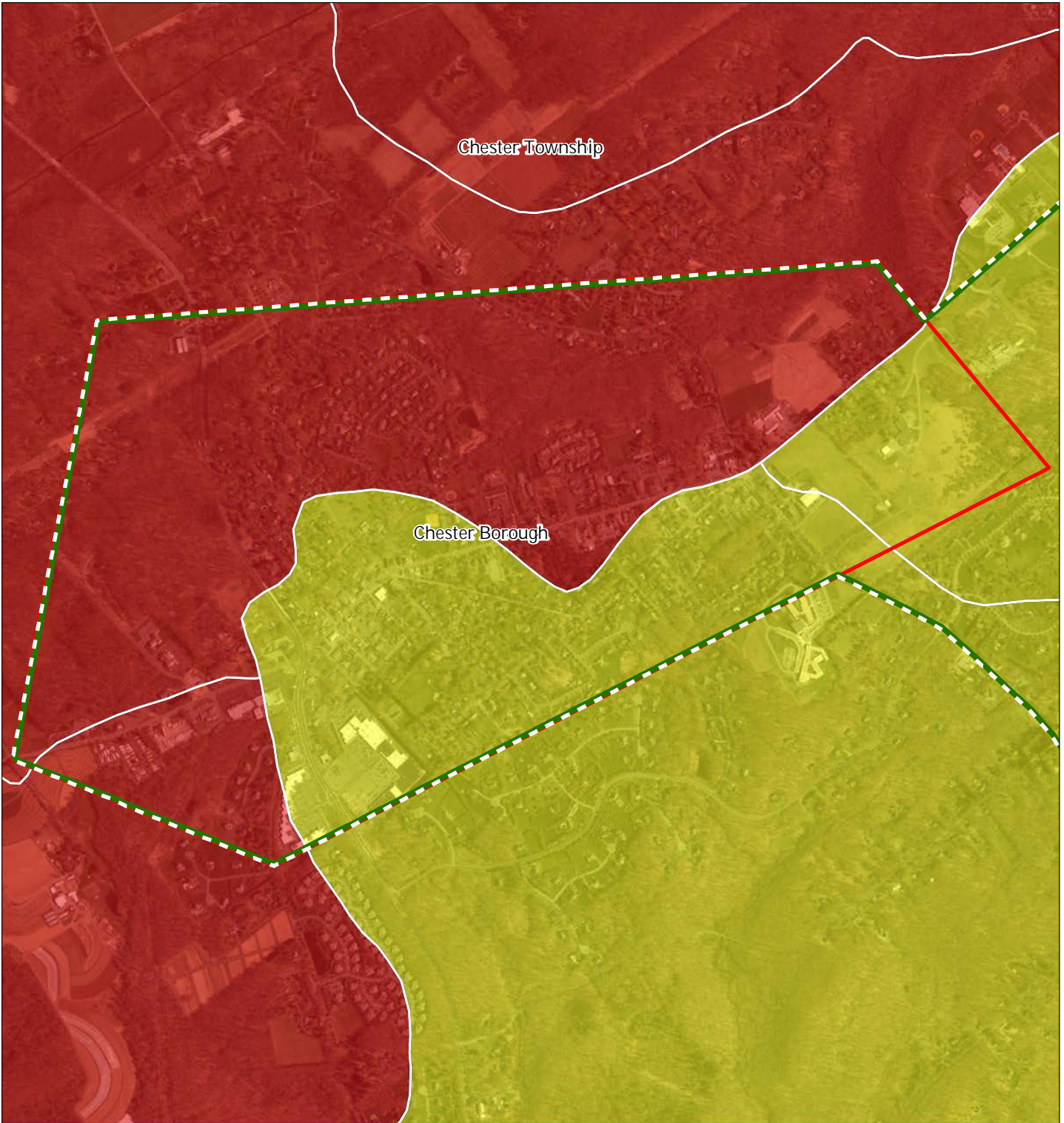
Chester Borough









1 inch = 0.263 miles



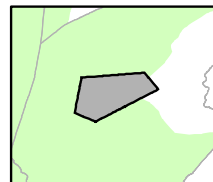
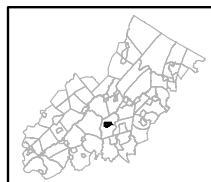
Figure 22: HUC 14s on NJDEP Impaired Waters List



Impaired Waters Overall Assessment by HUC14 Subwatershed

-  *Non Impacted*
-  *Insufficient Data Available*
-  *Moderate*
-  *Water Quality Impaired*
-  Preservation Area
-  Municipal Boundaries

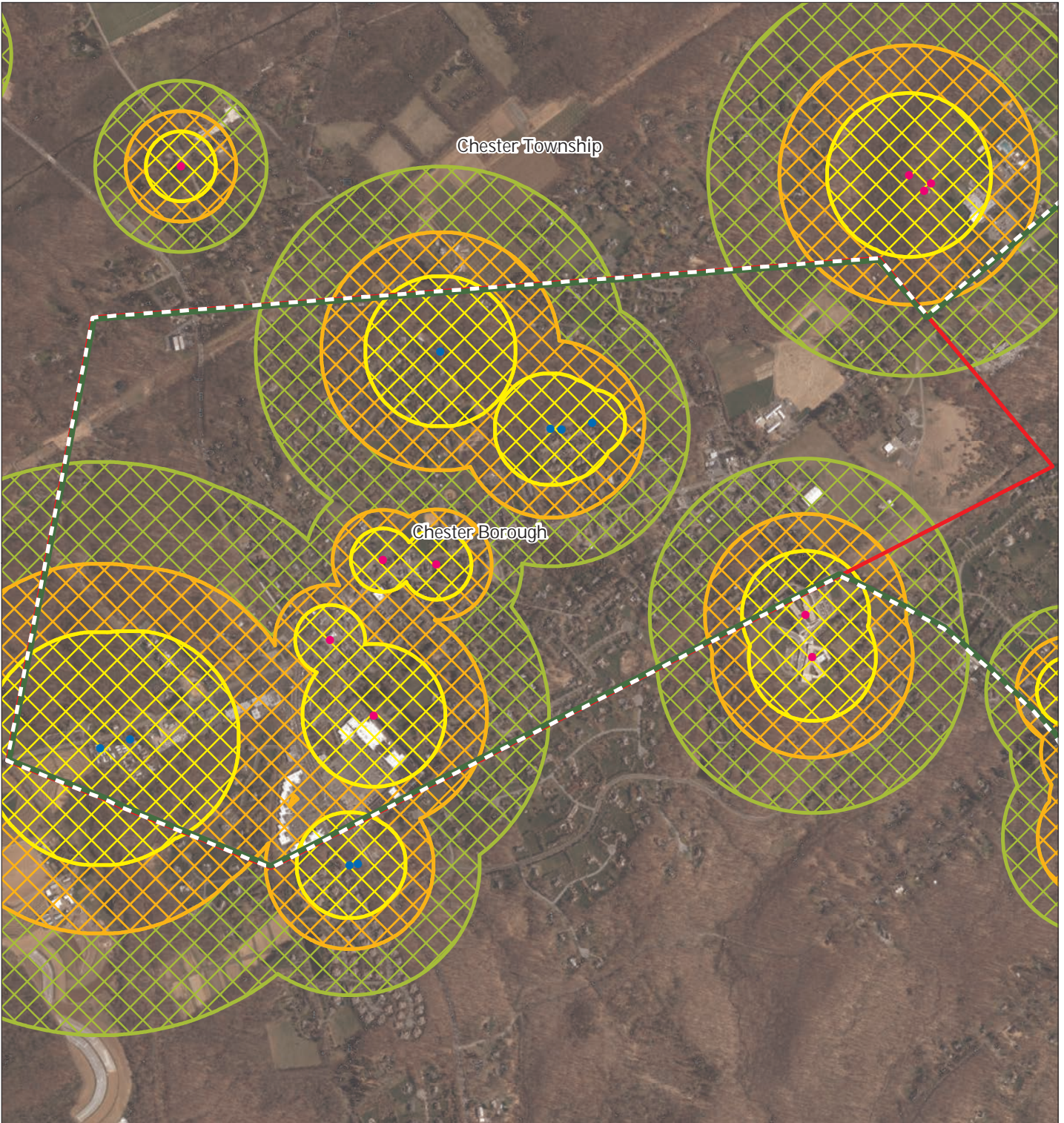
Chester Borough



1 inch = 0.263 miles



Figure 23: Wellhead Protection Areas



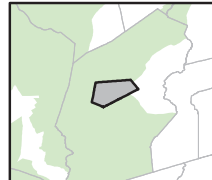
- Public Community Wells
- Public Non-Community Wells

Chester Borough

Wellhead Protection Areas

- 2-Year Tier
- 5-Year Tier
- 12-Year Tier

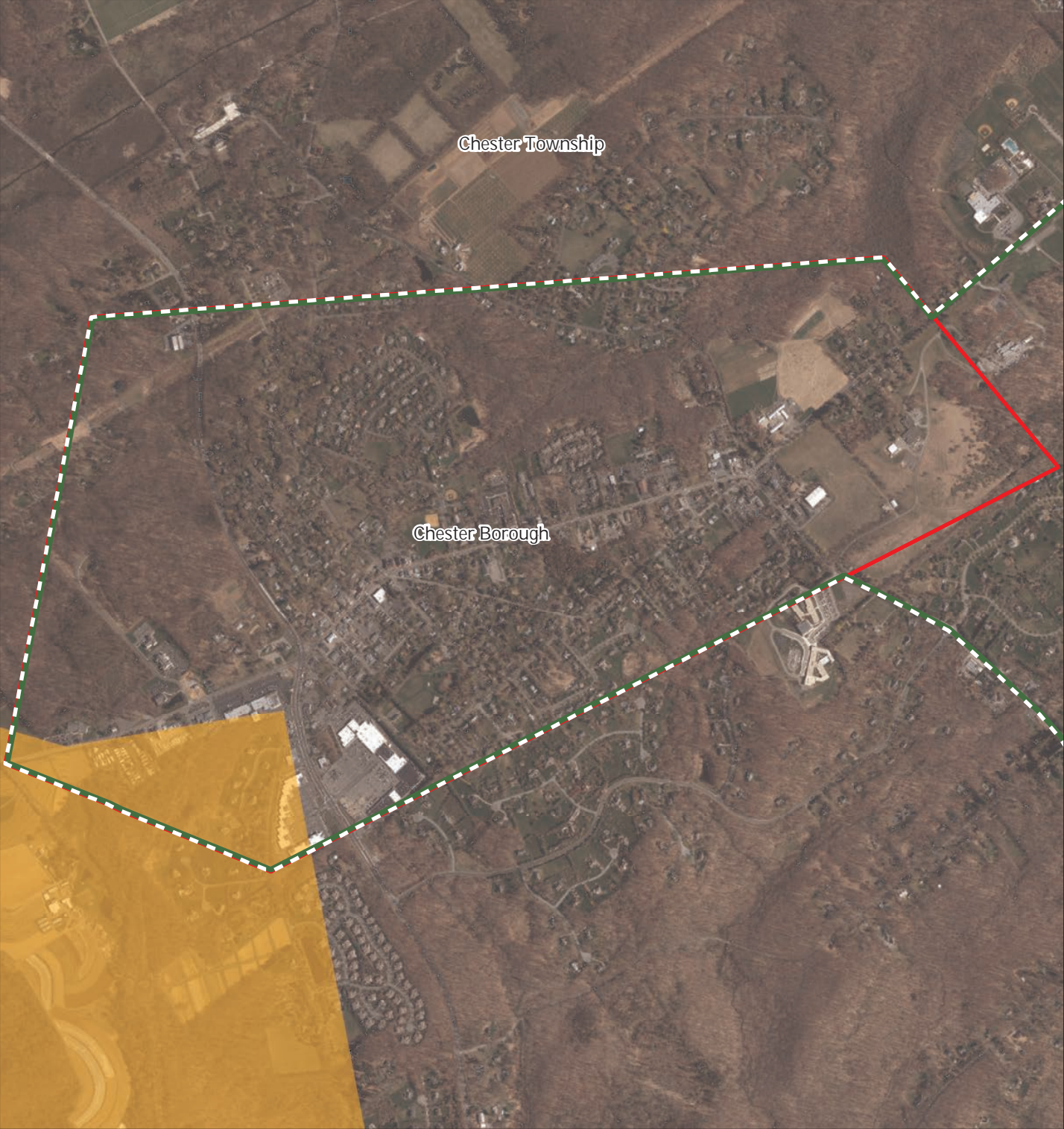
- Preservation Area
- Municipal Boundaries






1 inch = 0.261 miles

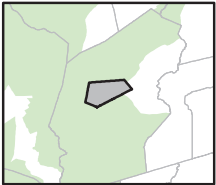


Figure 24: Agricultural Resource Area



-  Agricultural Resource Area
-  Preservation Area
-  Municipal Boundaries

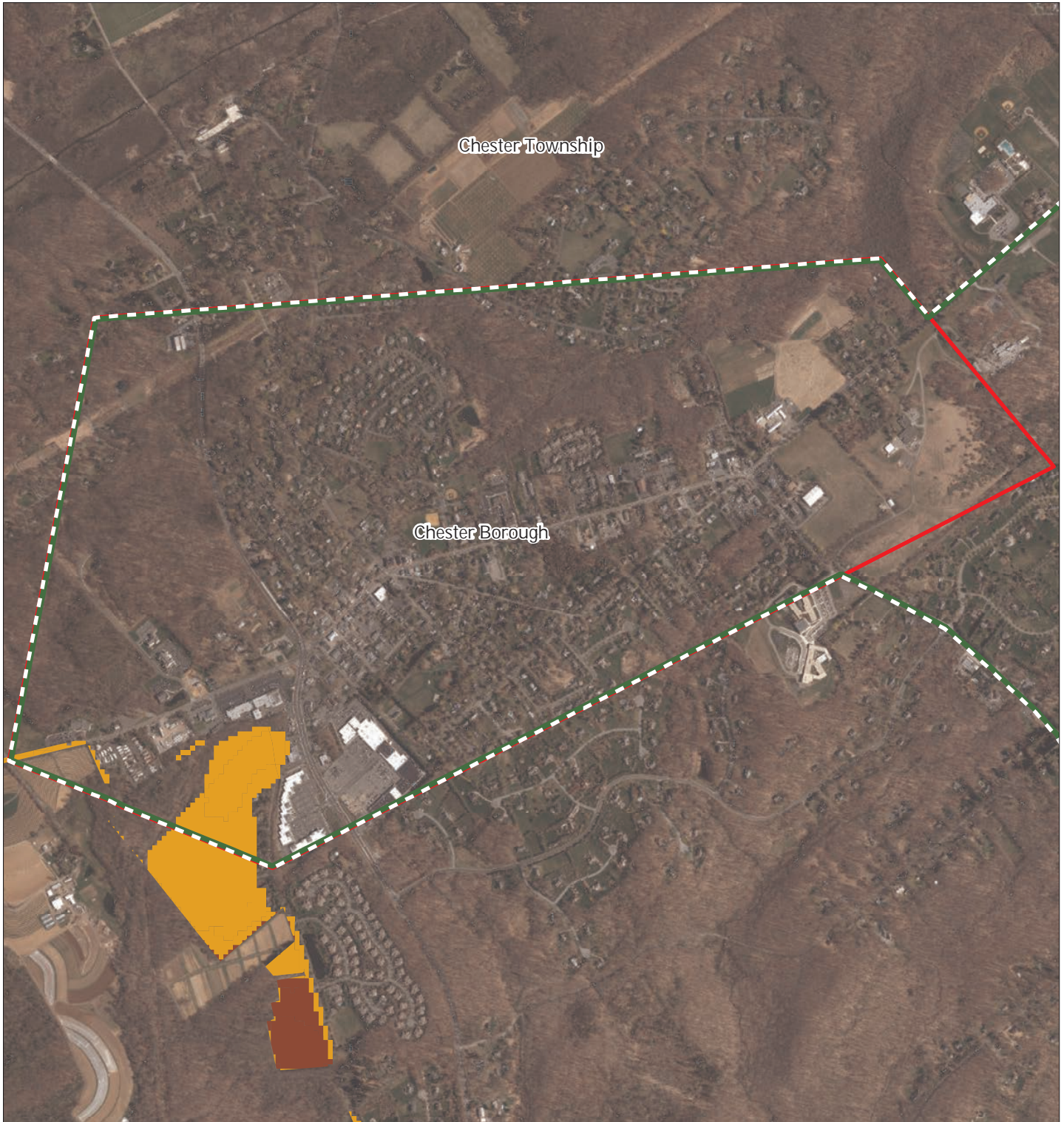
Chester Borough







1 inch = 0.261 miles



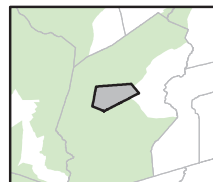
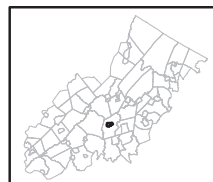
Figure 25: Agricultural Priority Area



Agricultural Priority Area

-  Moderate
-  High
-  Preservation Area
-  Municipal Boundaries

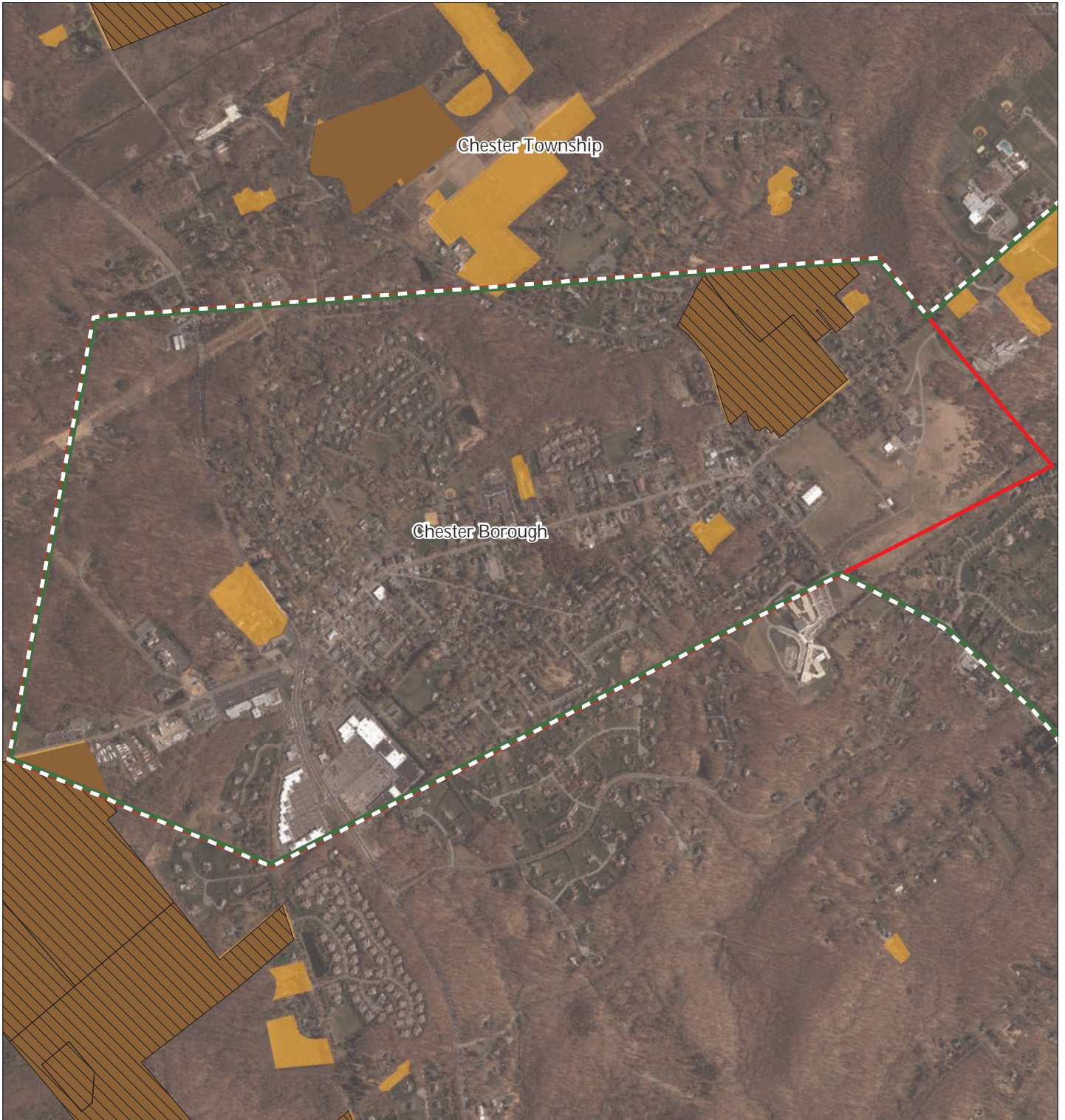
Chester Borough



1 inch = 0.261 miles



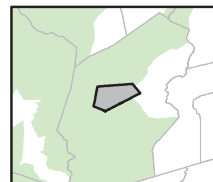
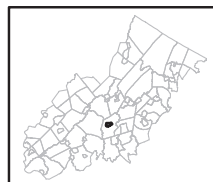
Figure 26: Preserved Farms, SADC Easements, All Agricultural Uses



SADC Easements

-  *SADC Final*
-  *SADC Preserved*
-  Preserved Farmland
-  Agriculture Uses
-  Preservation Area
-  Municipal Boundaries

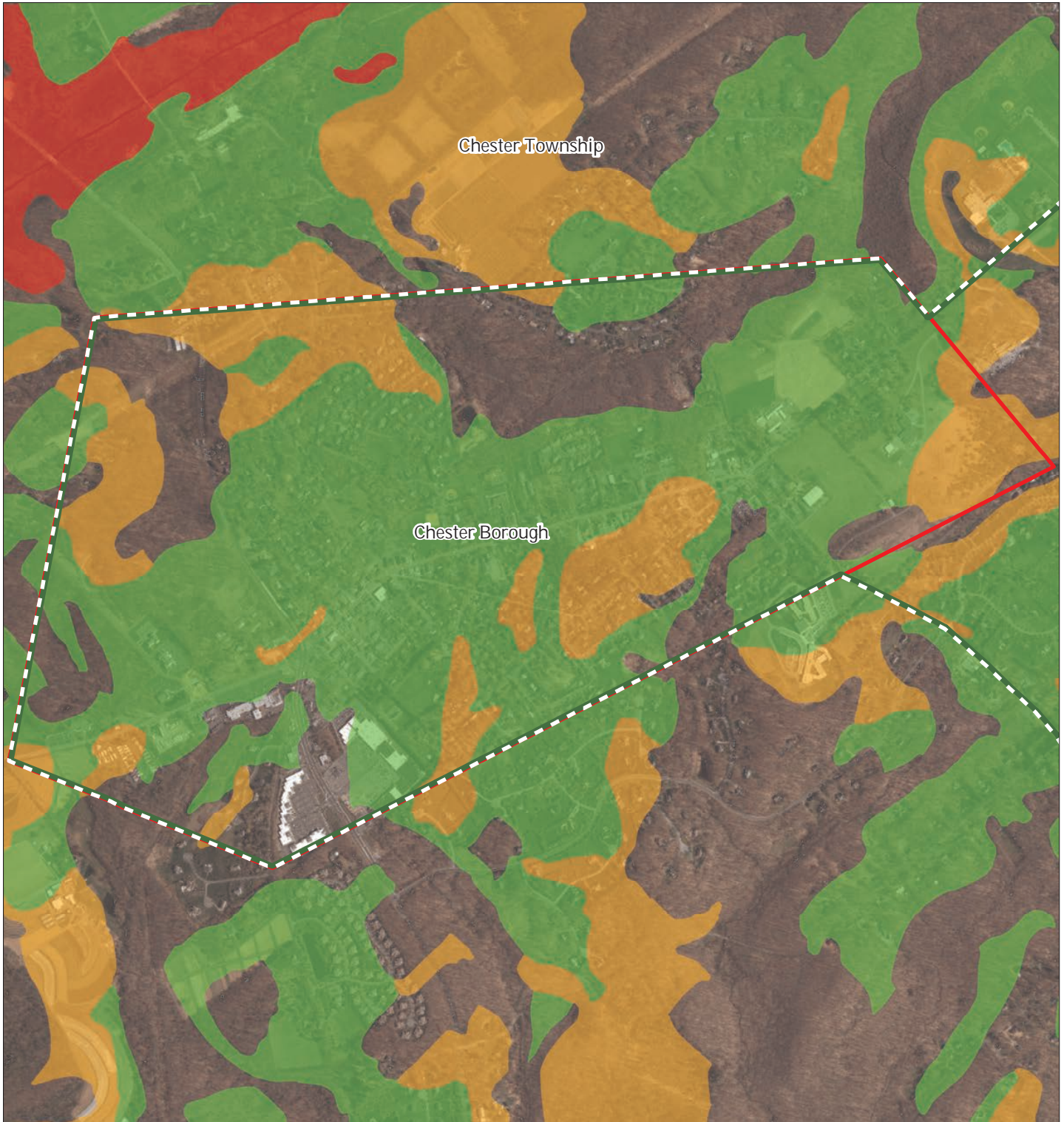
Chester Borough



1 inch = 0.261 miles



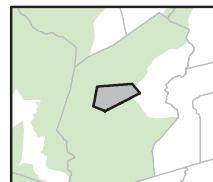
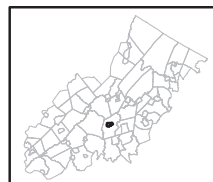
Figure 27: Important Farmland Soils



Important Farmland Soils

-  *Prime Farmland*
-  *Farmland of Local Importance*
-  *Farmland of Statewide Importance*
-  *Farmland of Unique Importance*
-  Preservation Area
-  Municipal Boundaries

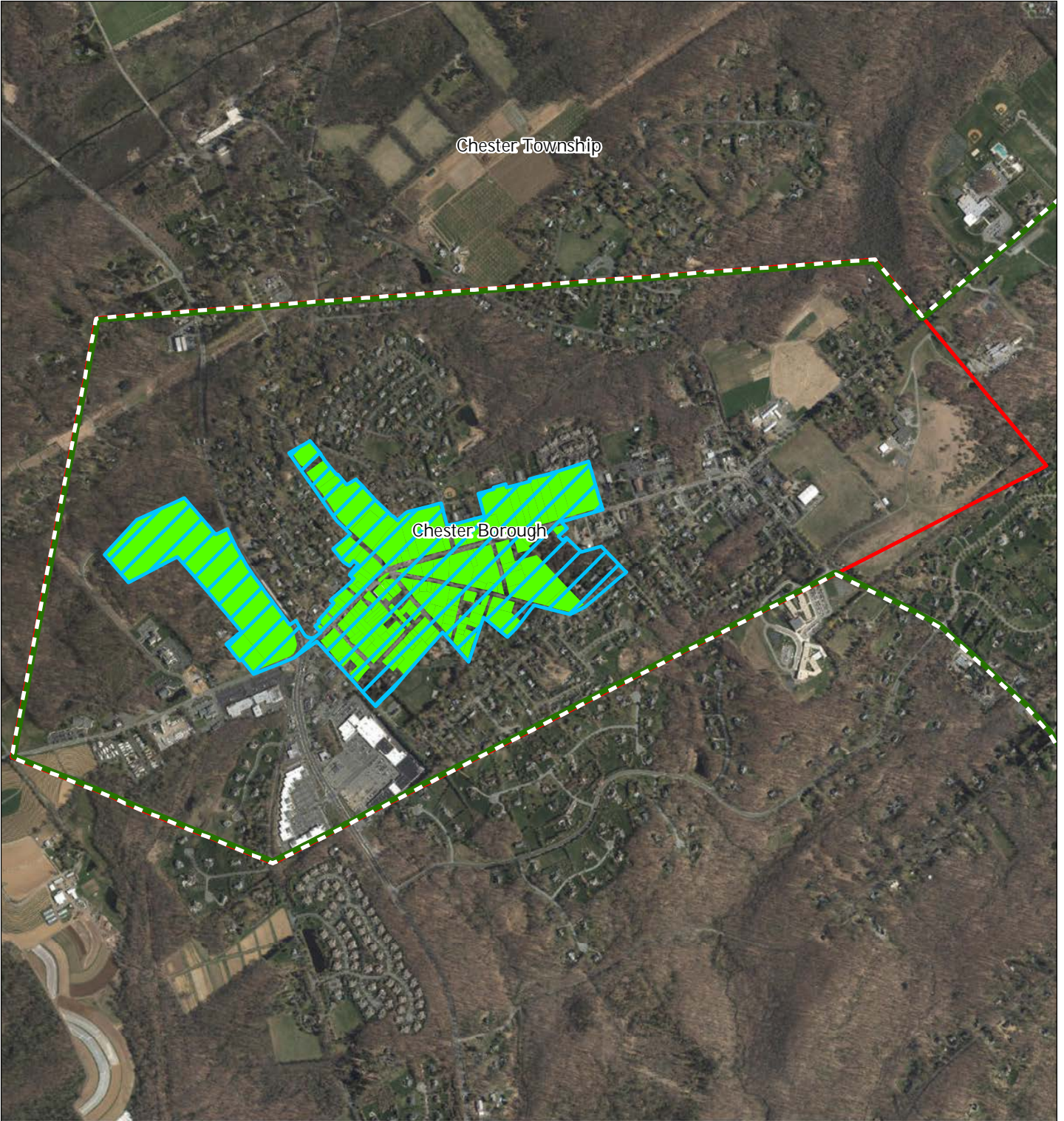
Chester Borough



1 inch = 0.261 miles

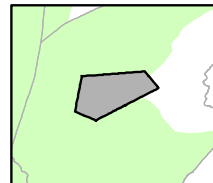
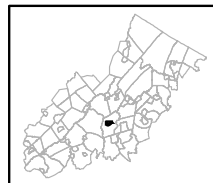


Figure 28: Historic, Cultural, and Archaeological Resources Inventory



-  Preservation Area
-  Municipal Boundaries
-  Archaeological Grids (1 sq mi)
-  NJ Historic Districts
-  Historic Property Polygons

Chester Borough






1 inch = 0.263 miles

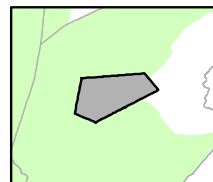
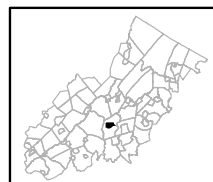


Figure 29: Baseline Scenic Resources Inventory



-  Scenic Resources
-  Municipal Boundaries
-  Preservation Area

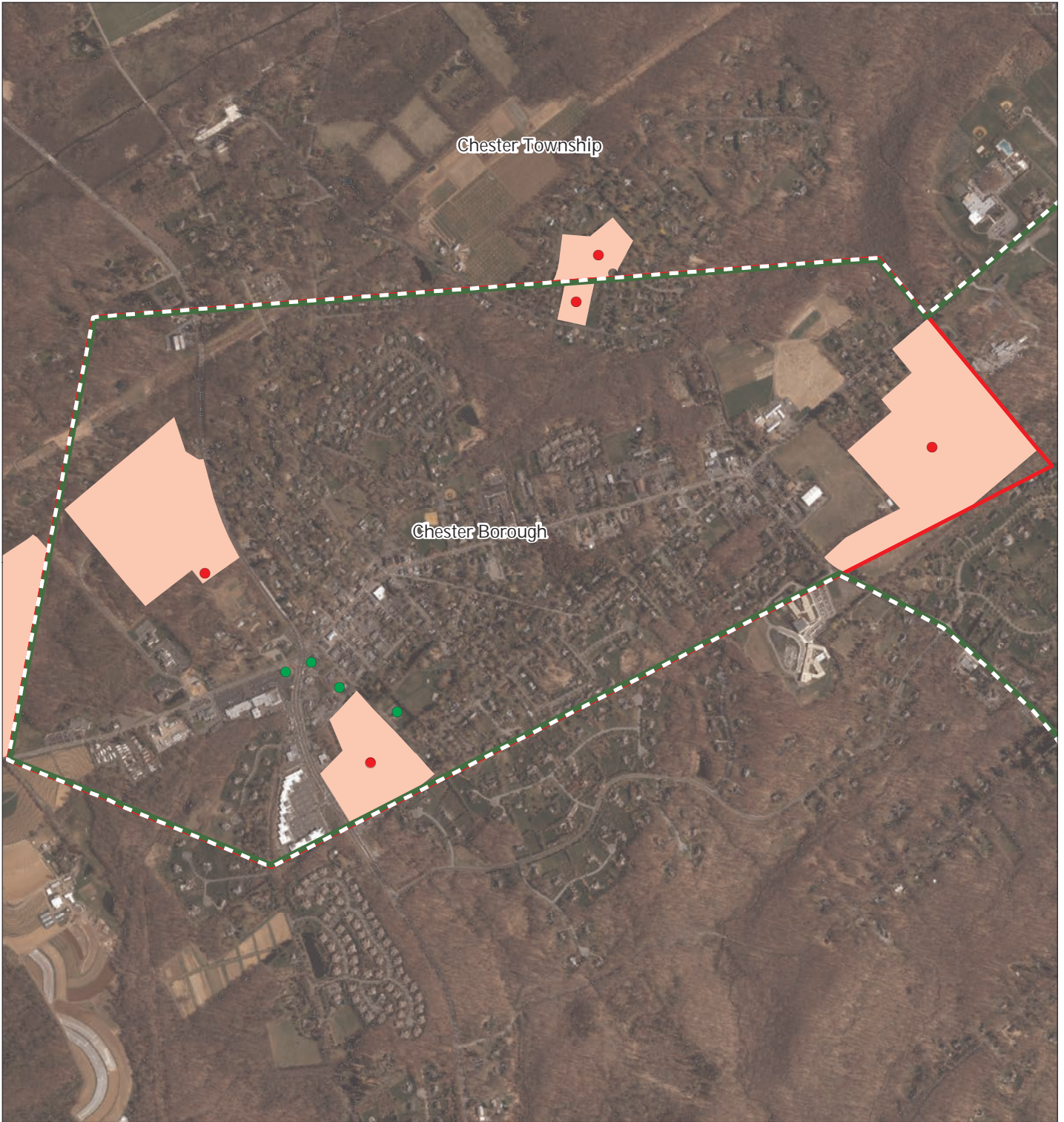
Chester Borough



1 inch = 0.263 miles



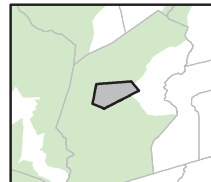
Figure 30: Highlands Contaminated Site Inventory



Highlands Contaminated Site Inventory

Chester Borough

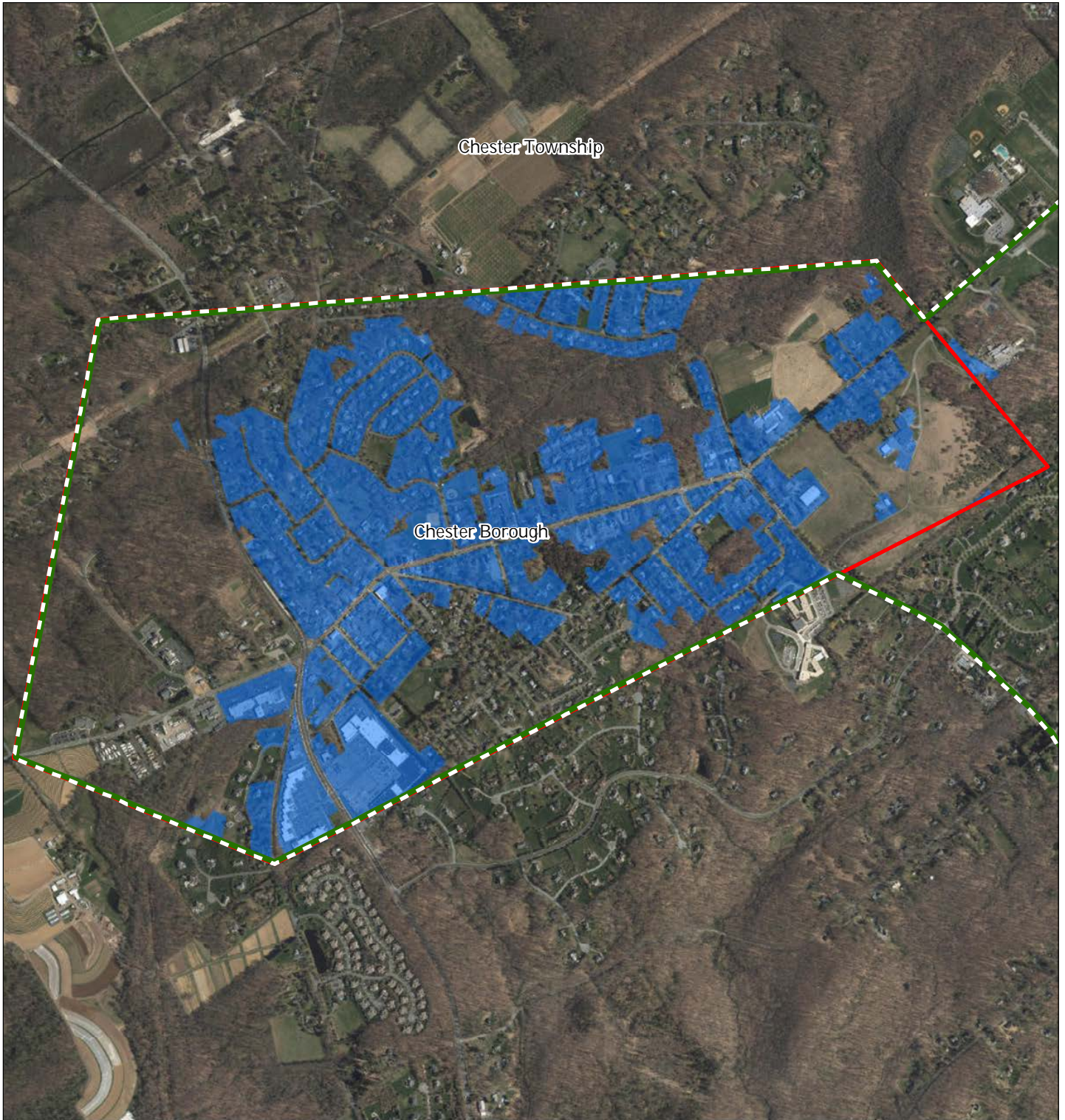
- Tier 1 Sites
- Tier 1 Sites (Polygons)
- Tier 2 Sites
- Preservation Area
- Municipal Boundaries






1 inch = 0.261 miles

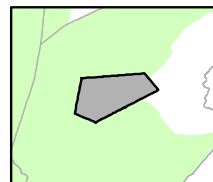
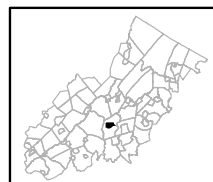


Figure 31: Public Community Water Systems



-  Public Community Water Systems
-  Preservation Area
-  Municipal Boundaries

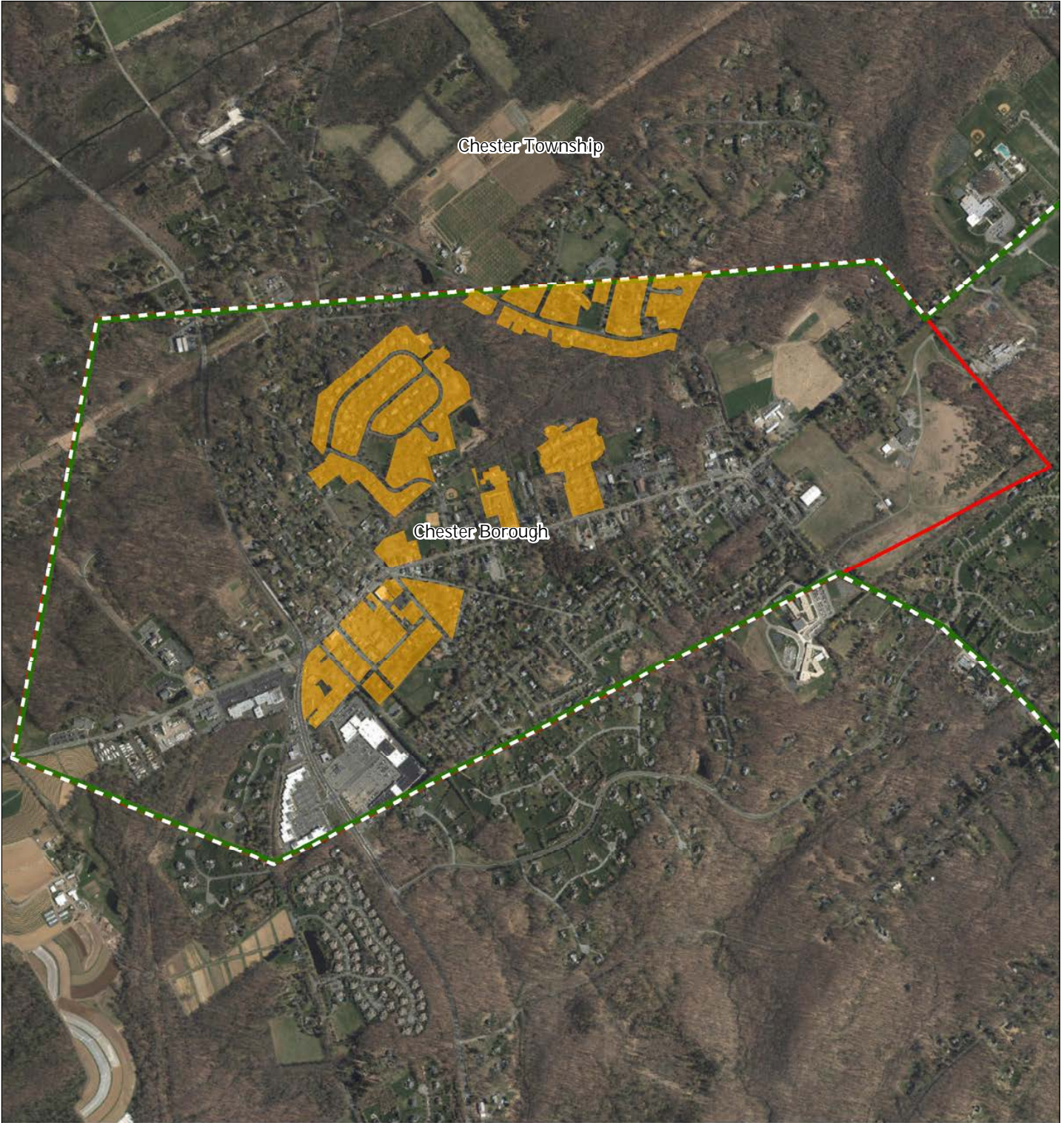
Chester Borough







1 inch = 0.263 miles



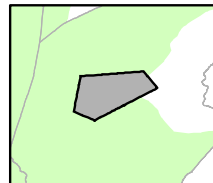
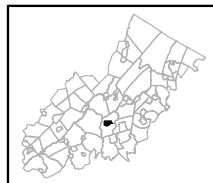
Figure 32: Highlands Domestic Sewerage Facilities



Highlands Domestic Sewerage Facilities

-  Existing Area Served
-  Future Area Served
-  Preservation Area
-  Municipal Boundaries

Chester Borough



1 inch = 0.263 miles



Figure 33: Highlands Roadway Network



Roadway Network

 Interstate Highways

 U.S. Routes

 State Routes

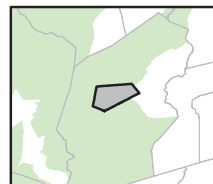
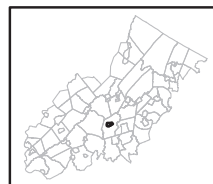
 County Routes

 Local Routes

 Preservation Area

 Municipal Boundaries

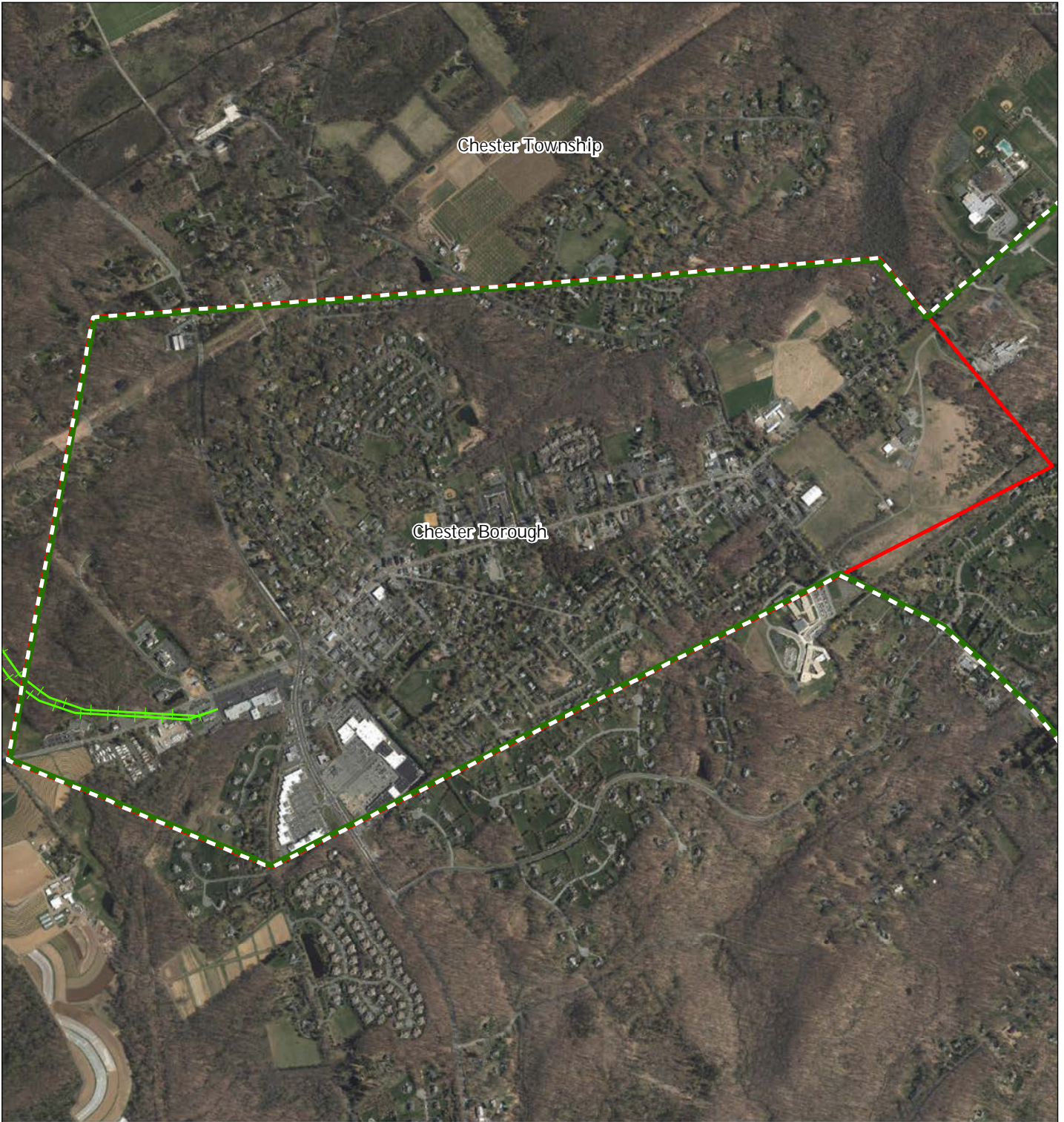
Chester Borough



1 inch = 0.261 miles

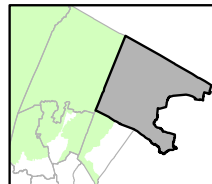
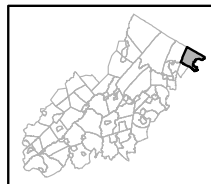


Figure 34: Highlands Transit Network



- | | |
|---|----------------------|
| Rail Network | Rail Stations |
| <i>Boonton Line</i> | Park and Ride Sites |
| <i>Main Line & Bergen County Line</i> | Private Bus Lines |
| <i>Morris and Essex Line</i> | NJ Transit Bus Lines |
| <i>Raritan Valley Line</i> | Airports |
| Freight Rail Lines | |
| <i>Freight Rail Lines</i> | |
| <i>Abandoned Freight Rail</i> | |

Chester Borough



1 inch = 0.261 miles

