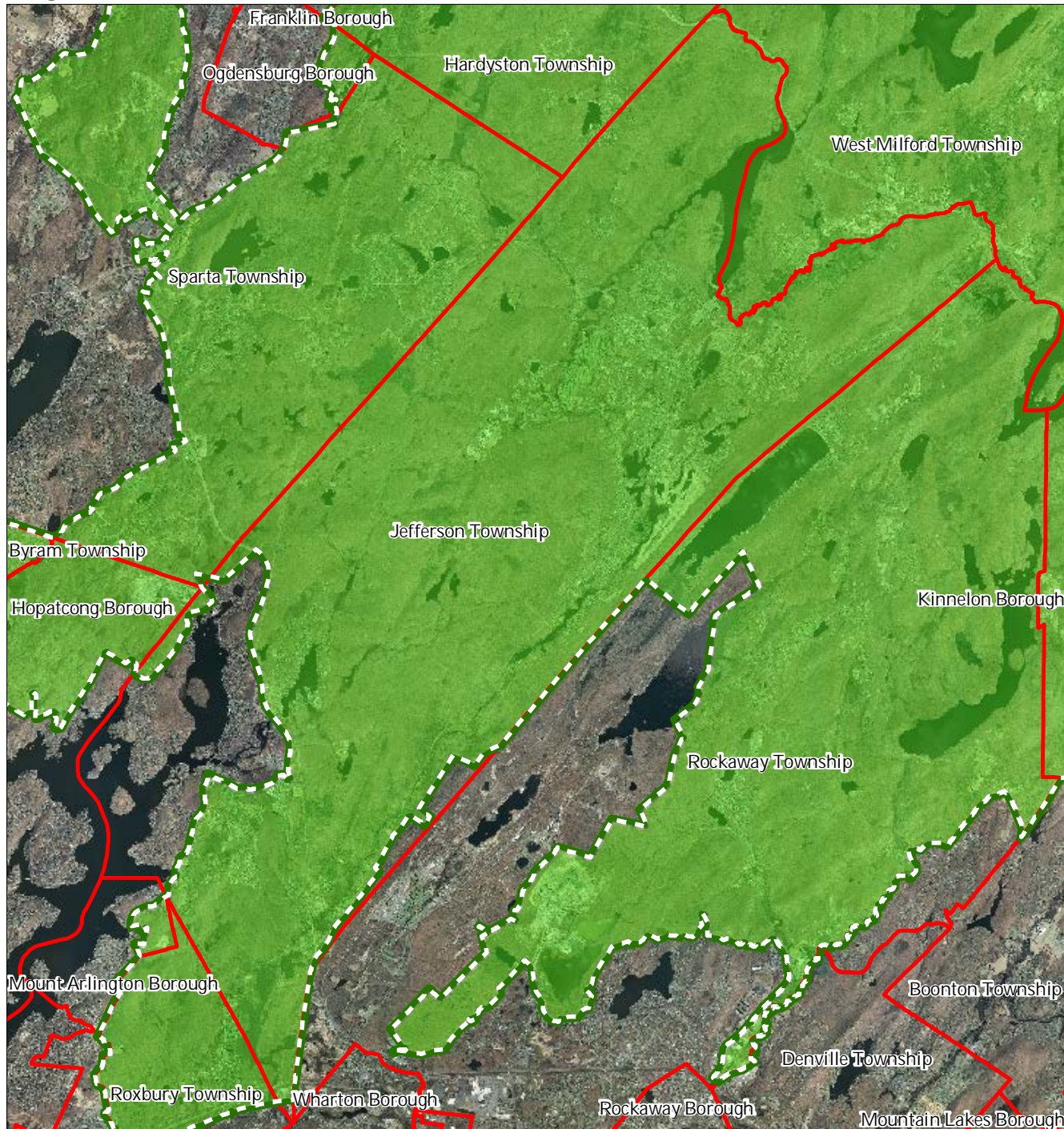


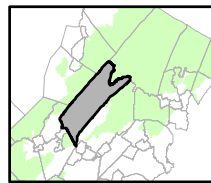
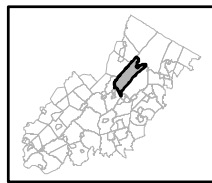


Figure 1: Preservation Area



-  Preservation Area
-  Municipal Boundaries

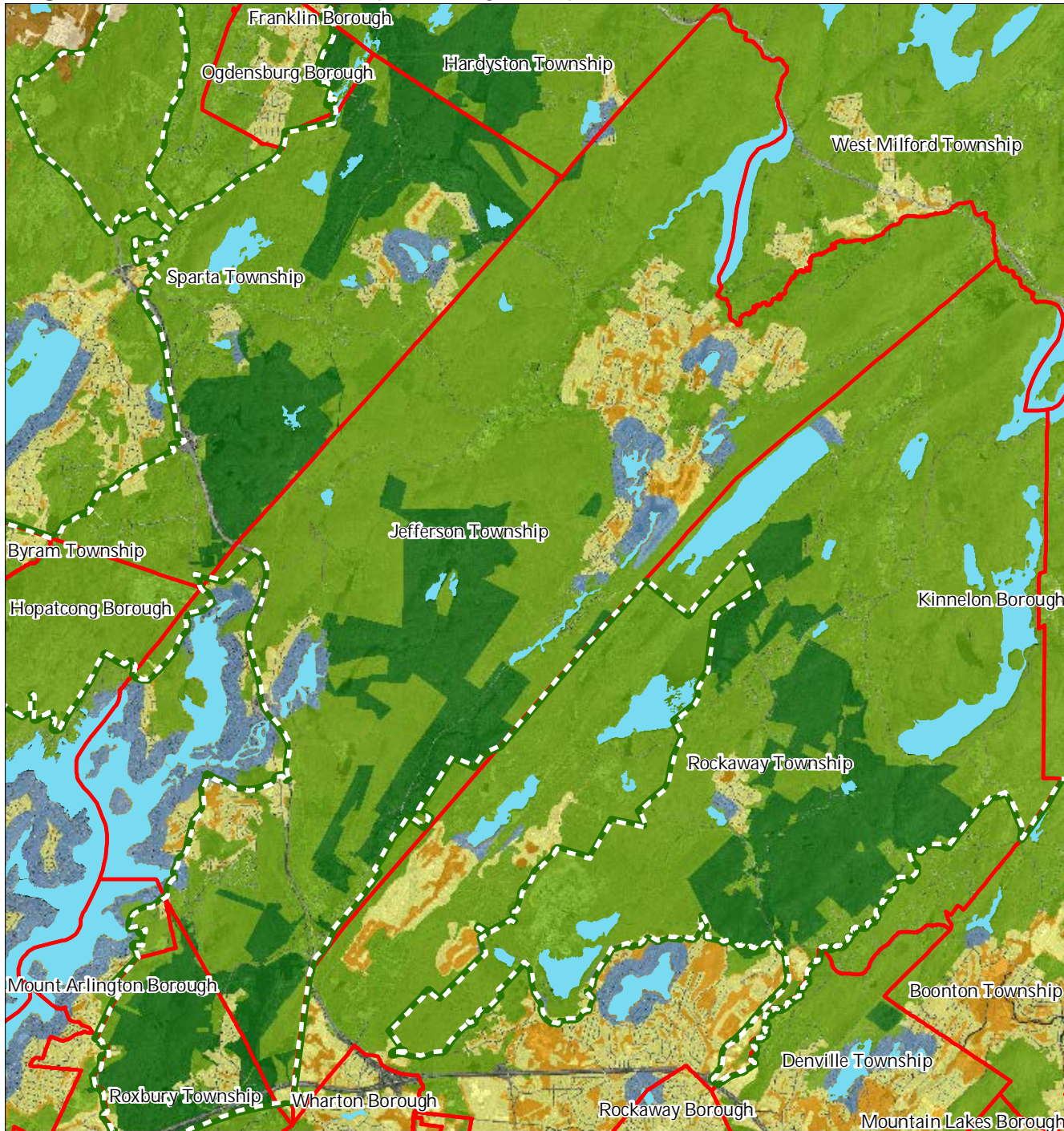
### Jefferson Township



1 inch = 1.5 miles



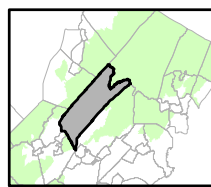
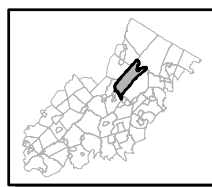
Figure 2: Land Use Capability Map Zones



Regional Master Plan Overlay Zone Designation

- |  |                             |
|--|-----------------------------|
| Protection                                     | Lakes Greater Than 10 acres |
| Conservation                                   | Preservation Area           |
| Existing Community                             | Municipal Boundaries        |
| <b>Sub-Zone</b>                                |                             |
| Existing Community Environmentally Constrained |                             |
| Conservation Environmentally Constrained       |                             |
| Lake Community                                 |                             |
| Wildlife Management                            |                             |

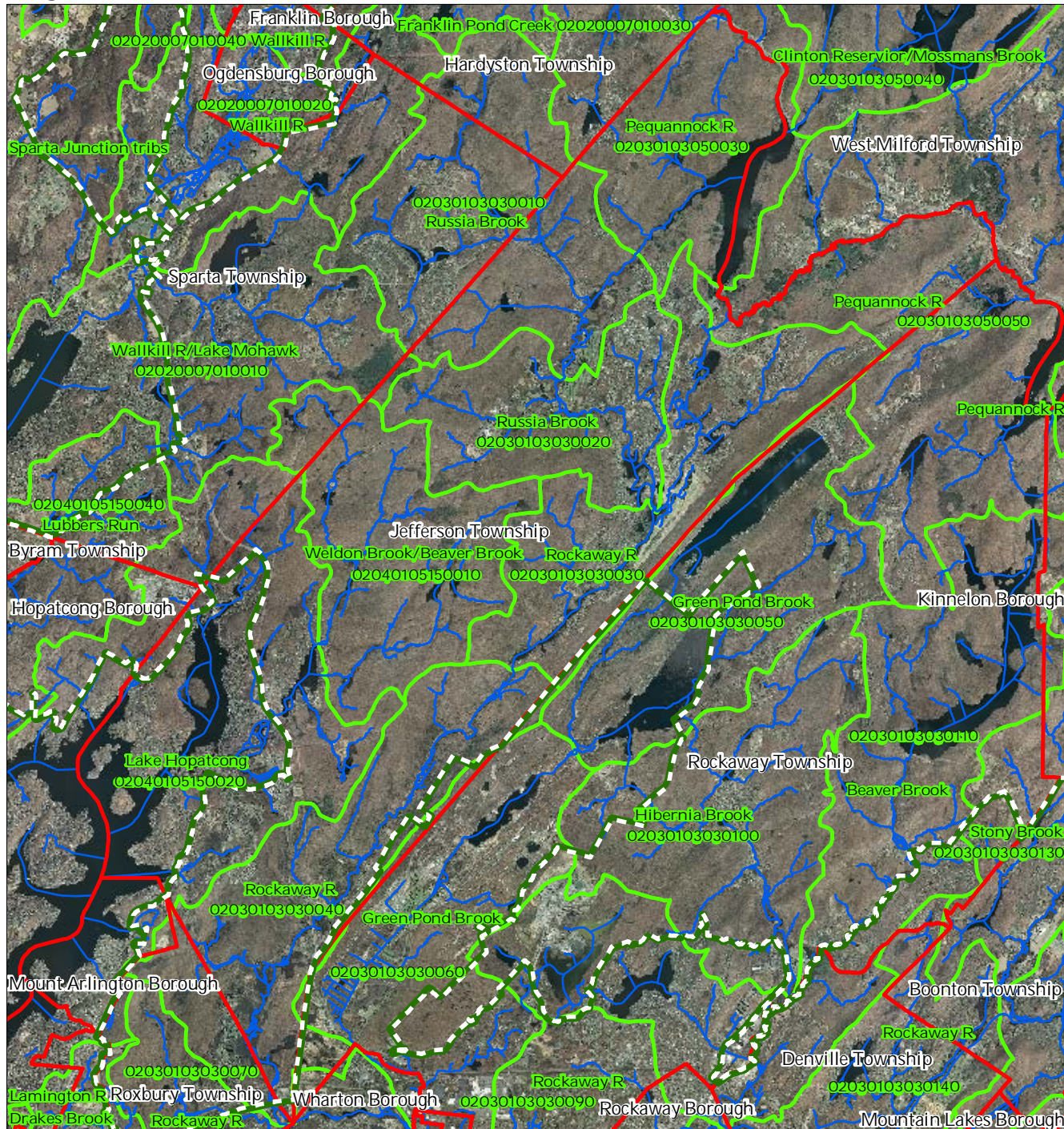
Jefferson Township







1 inch = 1.5 miles

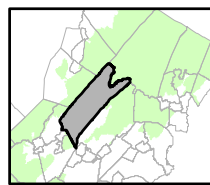
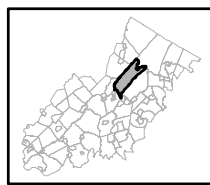


Figure 3: HUC 14 Boundaries



-  HUC 14 Subwatersheds
-  Stream Centerlines
-  Preservation Area
-  Municipal Boundaries

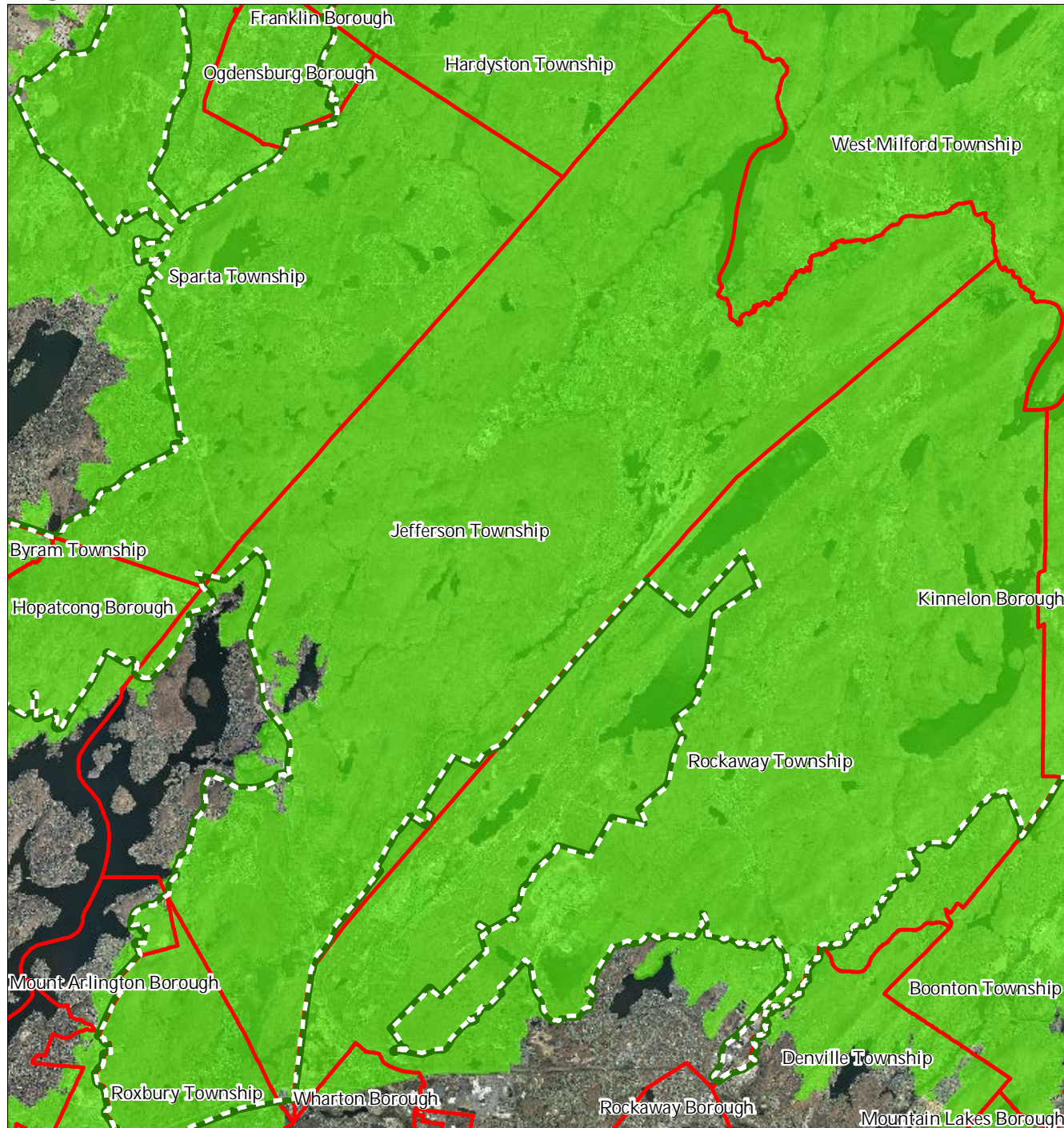
Jefferson Township



1 inch = 1.5 miles

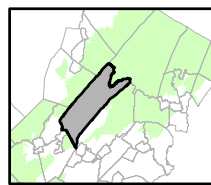
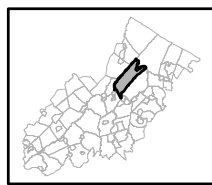


Figure 4: Forest Resource Area



- Forest Resource Area
- Preservation Area
- Municipal Boundaries

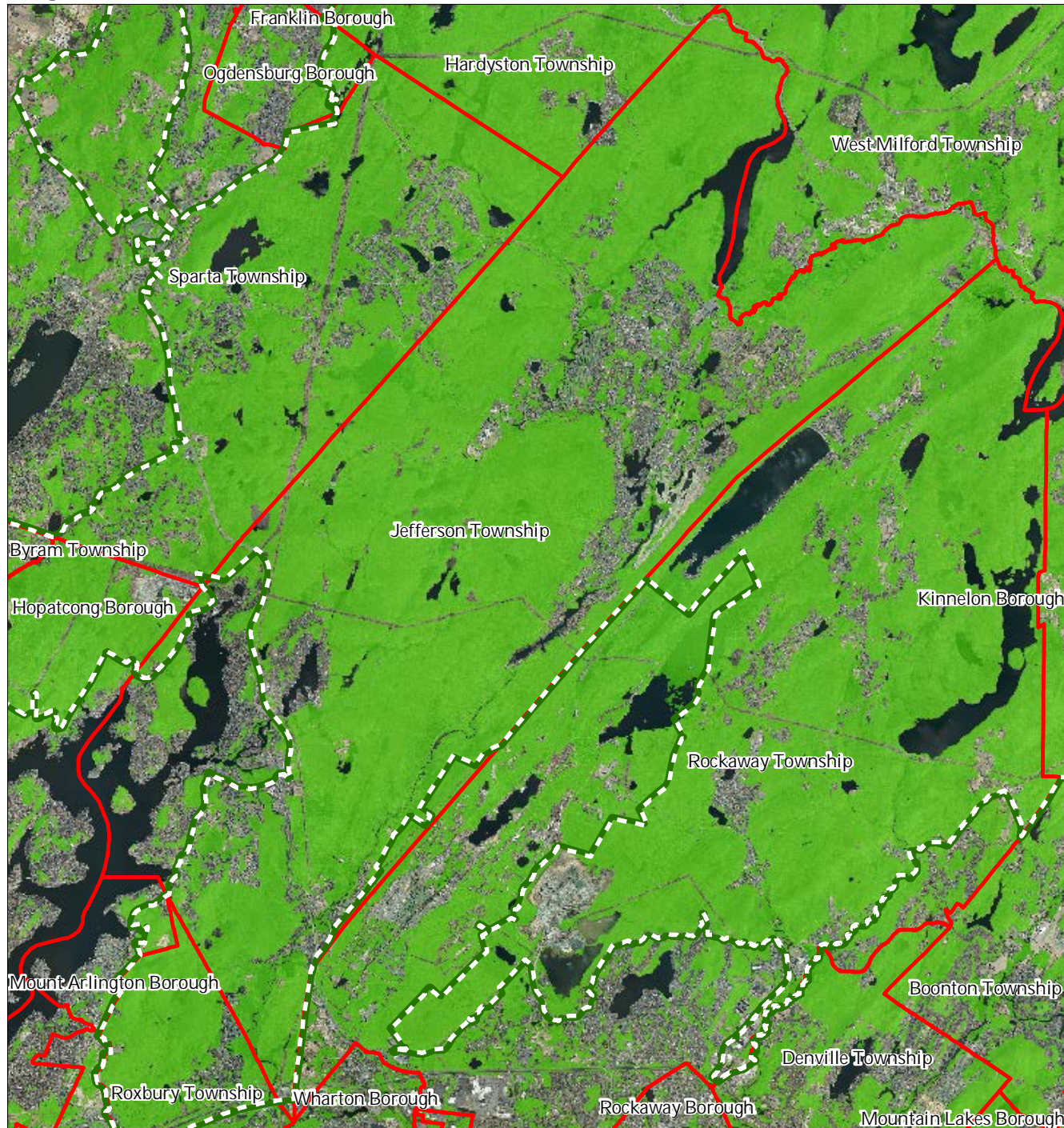
Jefferson Township



1 inch = 1.5 miles

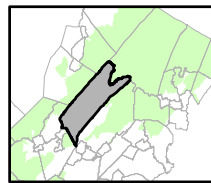
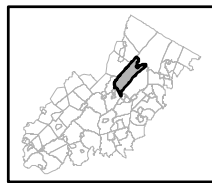


Figure 5: Total Forest Area



- Forested Areas
- Preservation Area
- Municipal Boundaries

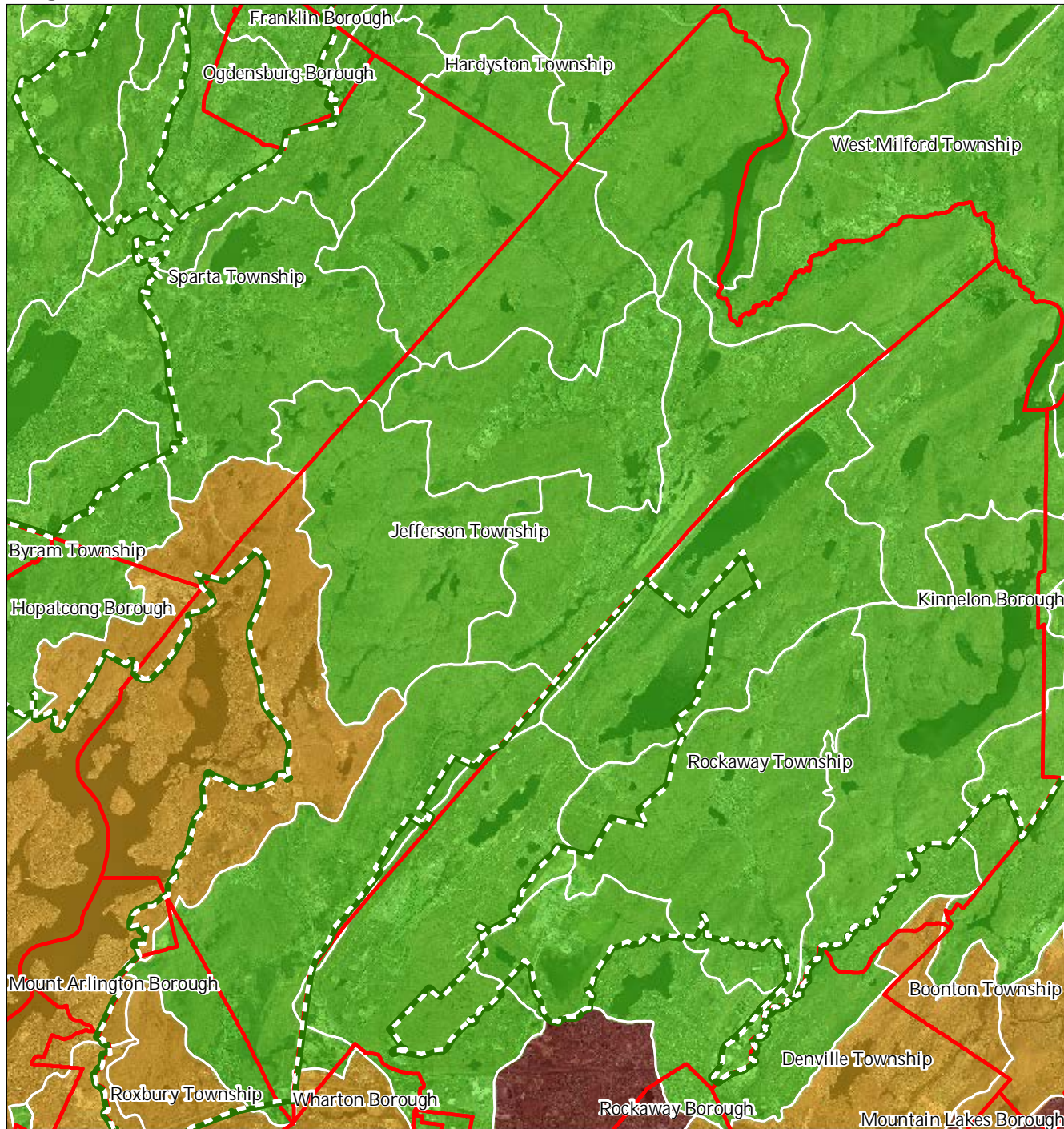
### Jefferson Township



1 inch = 1.5 miles



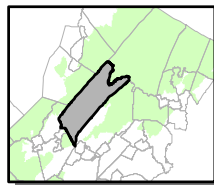
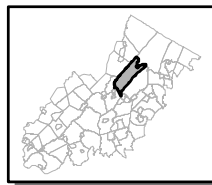
Figure 6: Forest Subwatersheds



Forest Integrity by HUC14 Subwatershed

- Low*
- Moderate*
- High*
- Preservation Area
- Municipal Boundaries

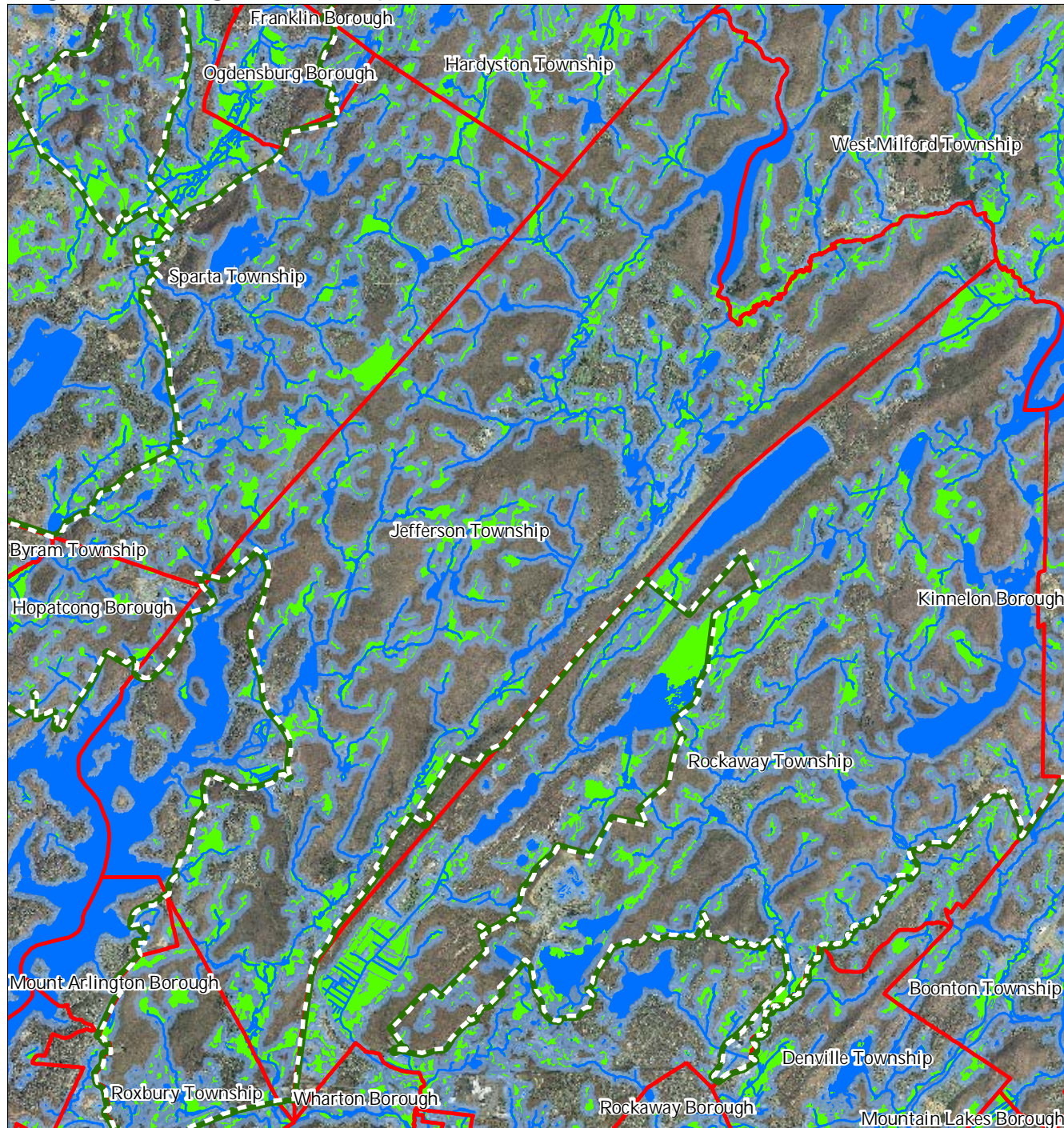
Jefferson Township



1 inch = 1.5 miles

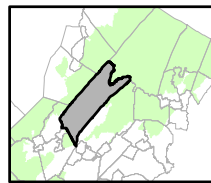
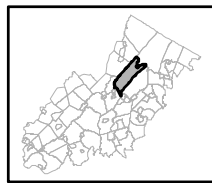


Figure 7: Highlands Open Waters



- Highlands Open Water Buffers (300ft)
- Streams
- Wetlands
- Lakes & Ponds
- Preservation Area
- Municipal Boundaries

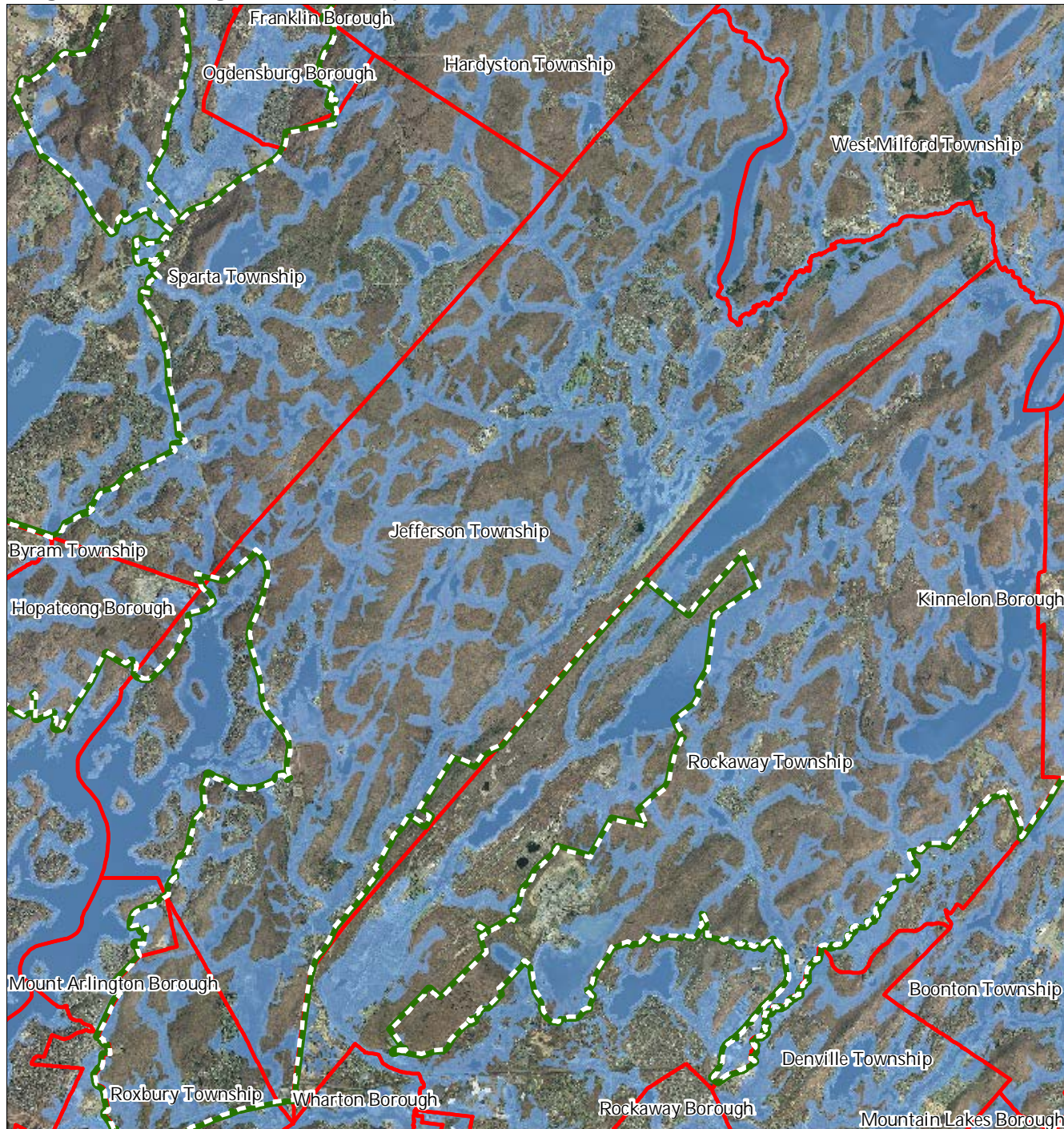
Jefferson Township



1 inch = 1.5 miles

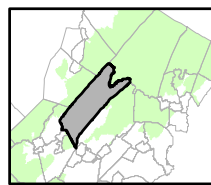
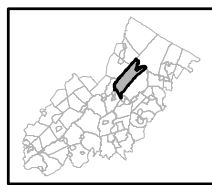


Figure 8: Highlands Riparian Areas



- Riparian Area
- Preservation Area
- Municipal Boundaries

### Jefferson Township

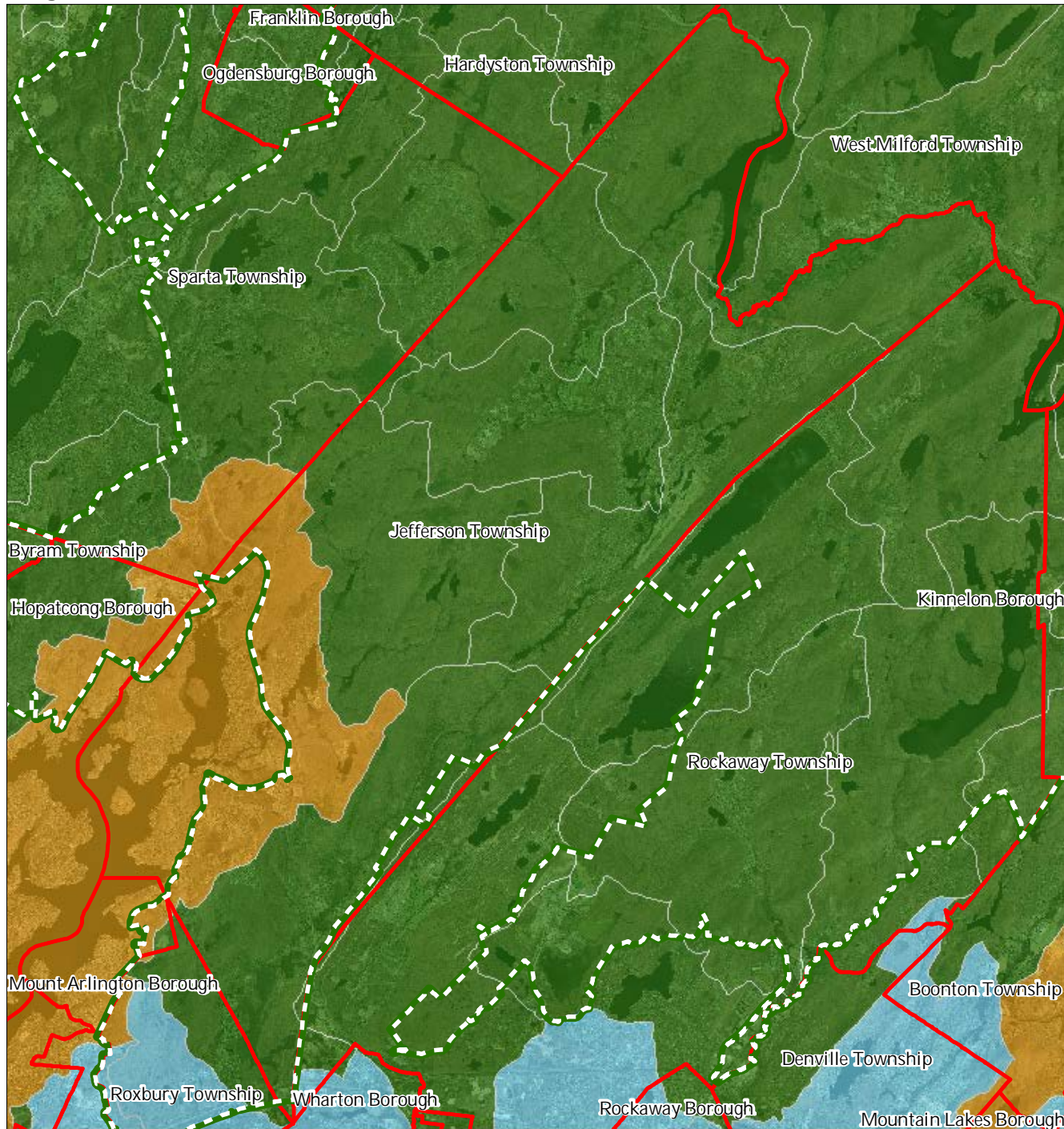


1 inch = 1.5 miles

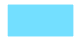








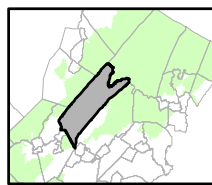
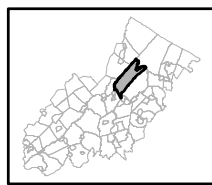
Figure 9: Watershed Values



Watershed Values by HUC14 Subwatershed

-  Low
-  Moderate
-  High
-  Preservation Area
-  Municipal Boundaries

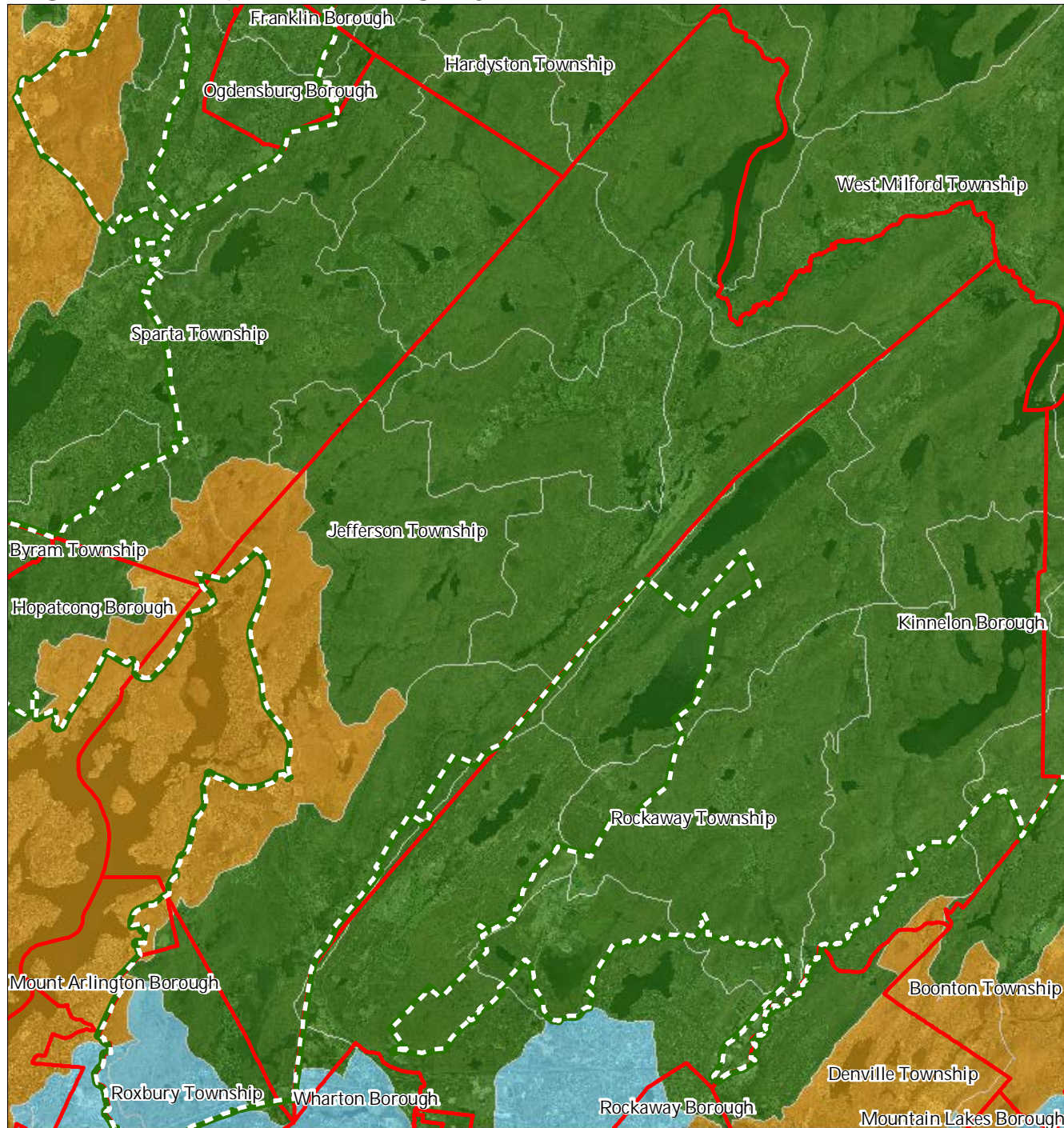
### Jefferson Township








1 inch = 1.5 miles



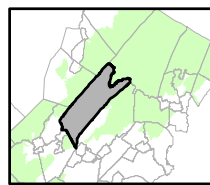
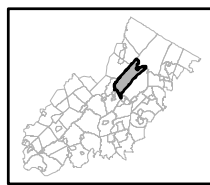
Figure 10: Riparian Integrity



Riparian Integrity by HUC14 Subwatershed

-  Low
-  Moderate
-  High
-  Preservation Area
-  Municipal Boundaries

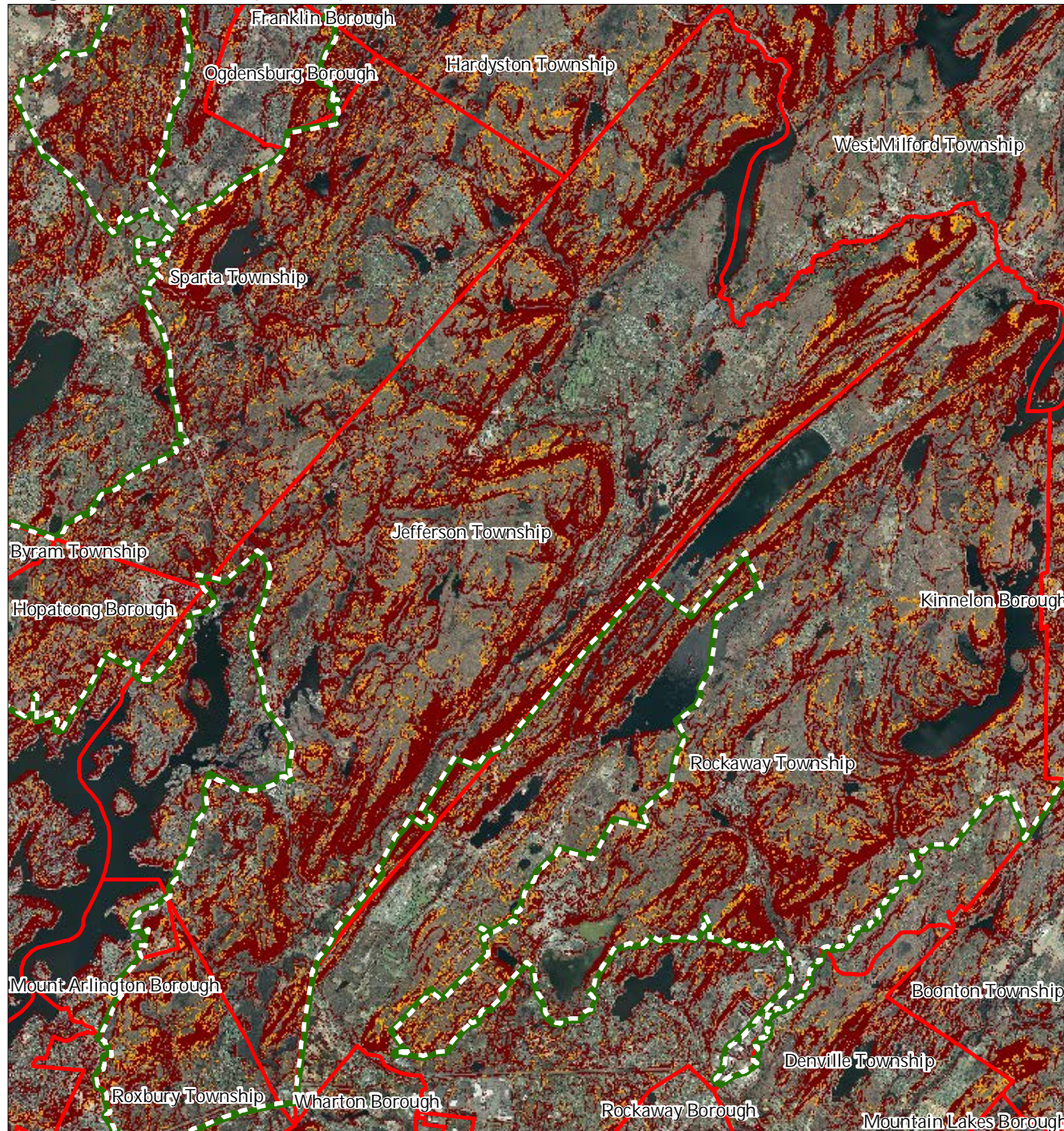
### Jefferson Township







1 inch = 1.5 miles



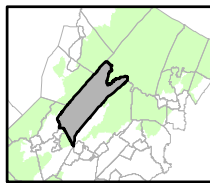
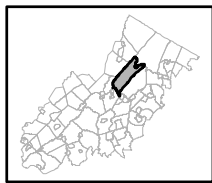
Figure 11: Steep Slope Protection Areas



Steep Slopes

-  Moderate
-  Severe
-  Preservation Area
-  Municipal Boundaries

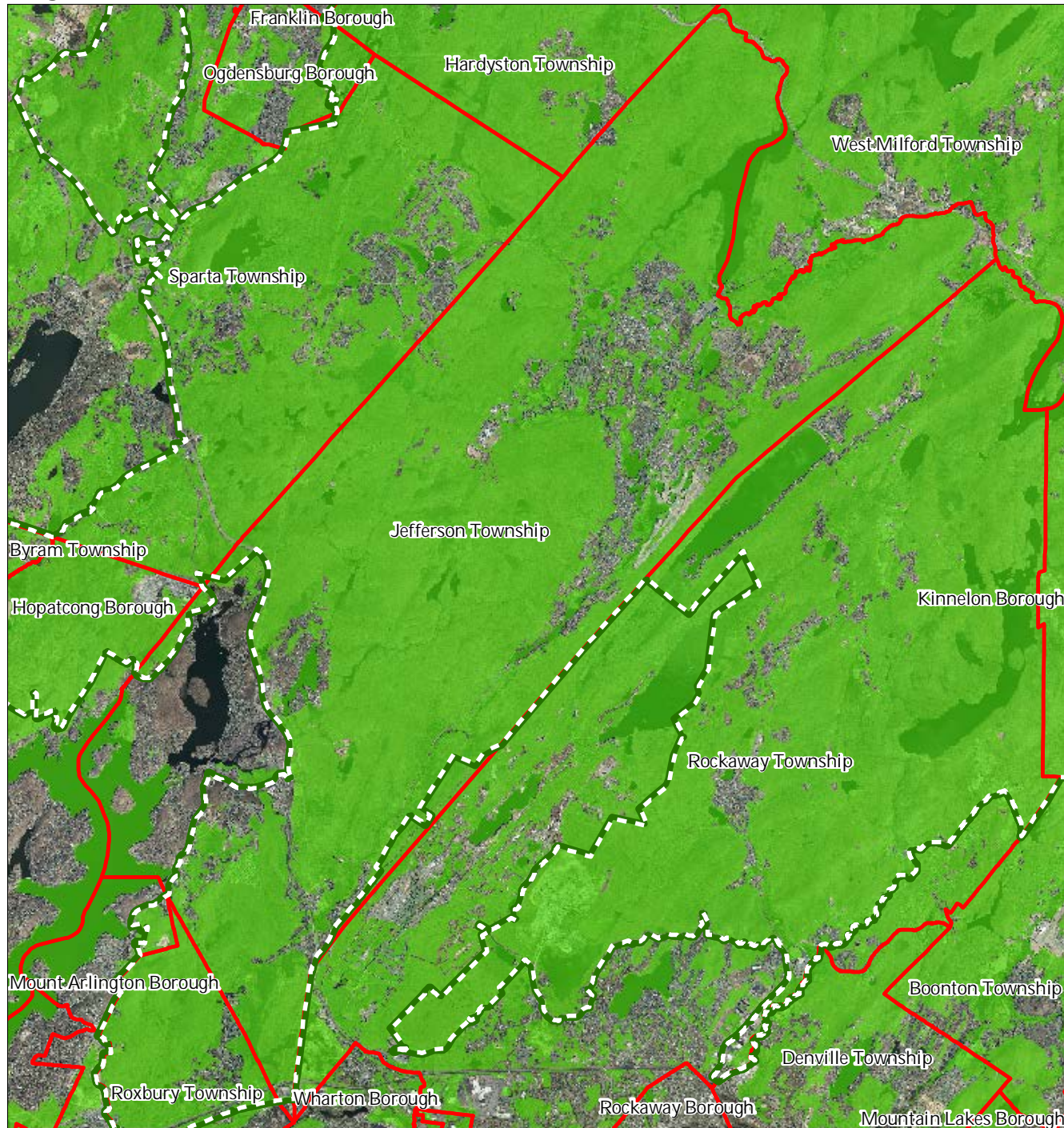
Jefferson Township






1 inch = 1.5 miles

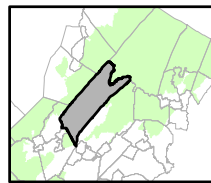
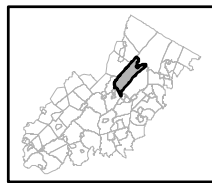


Figure 12: Critical Wildlife Habitat



-  Critical Wildlife Habitat
-  Preservation Area
-  Municipal Boundaries

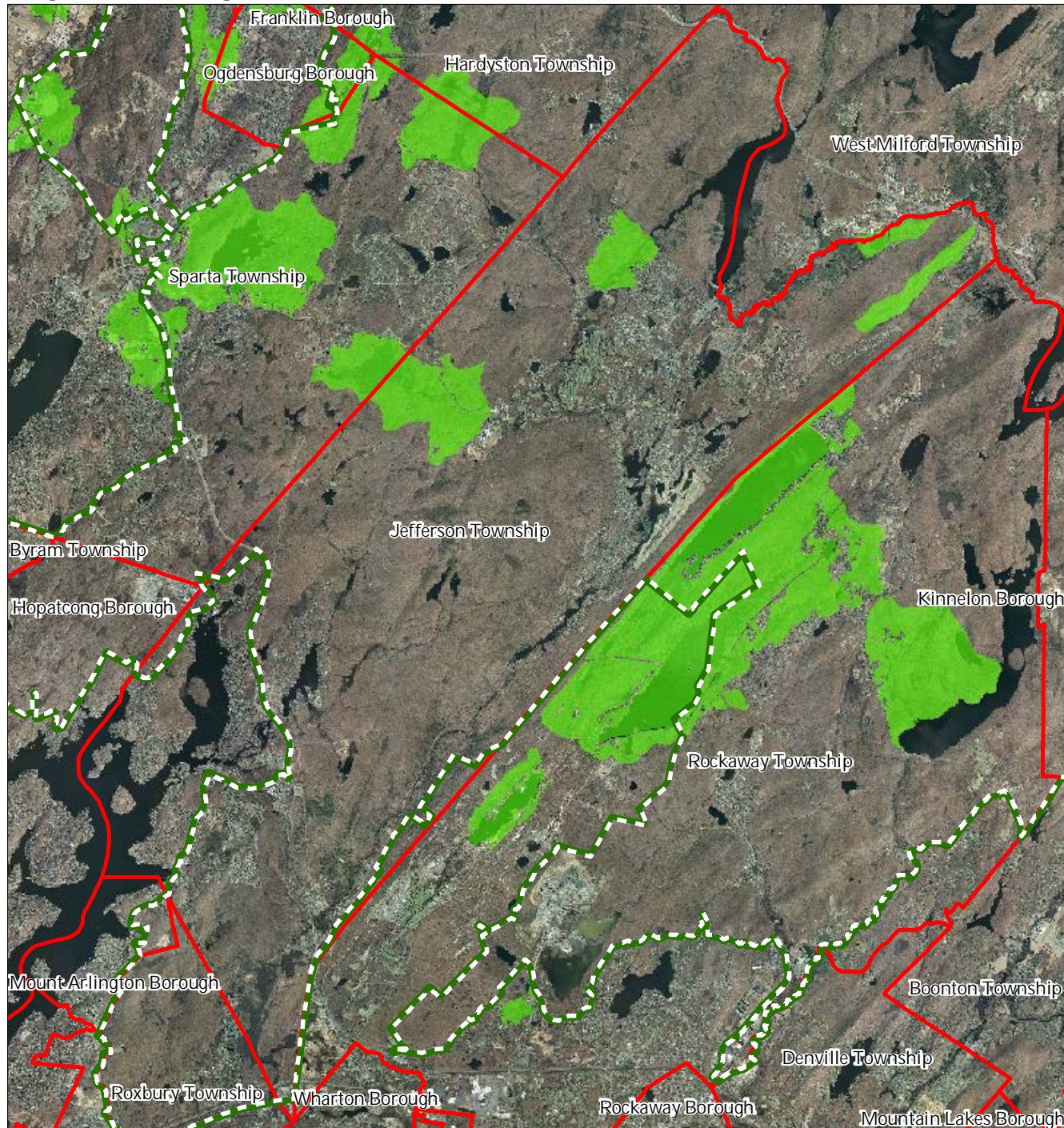
Jefferson Township






1 inch = 1.5 miles

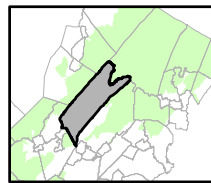
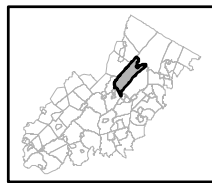


Figure 13: Significant Natural Areas



-  Significant Natural Areas
-  Preservation Area
-  Municipal Boundaries

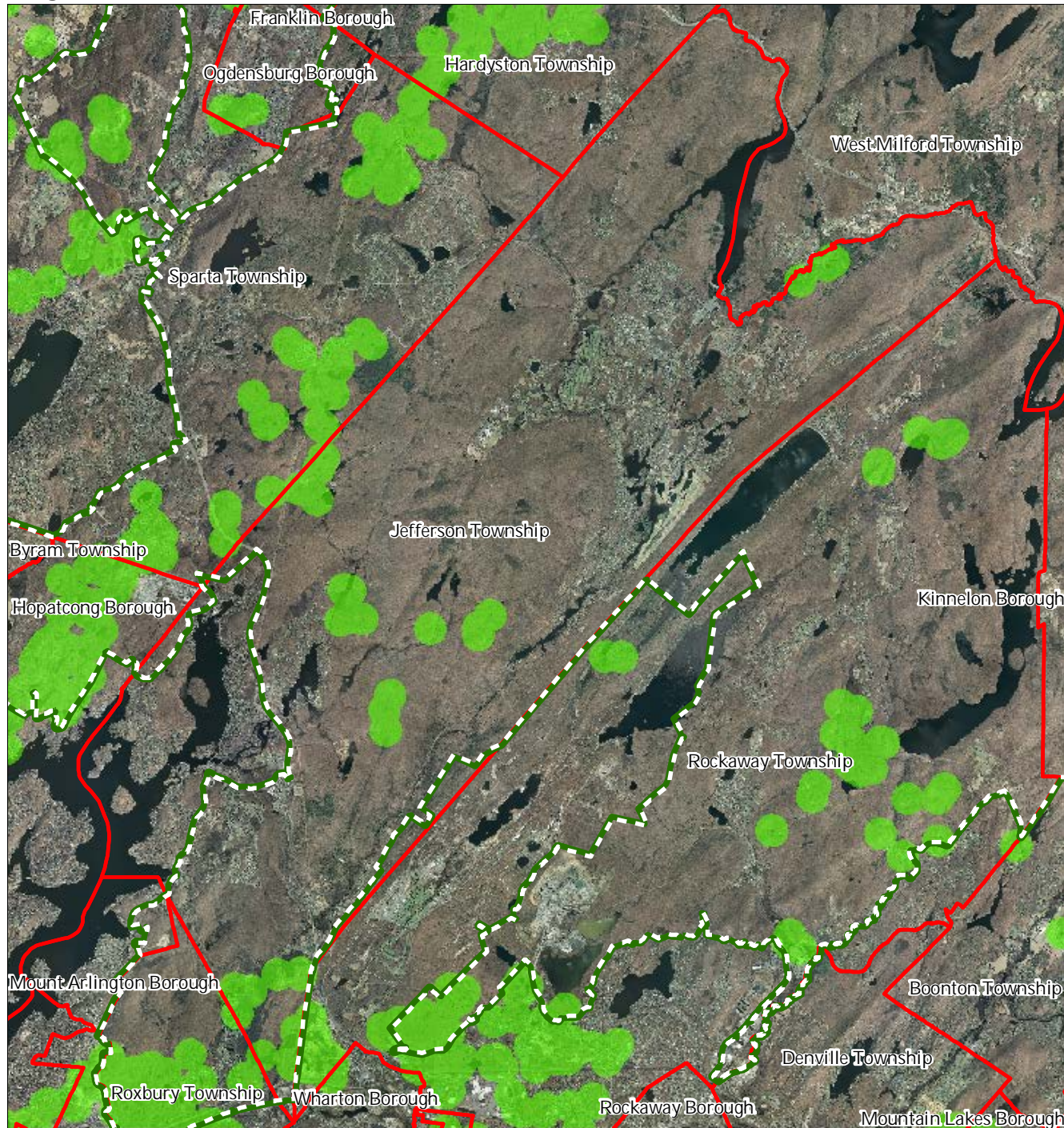
### Jefferson Township






1 inch = 1.5 miles

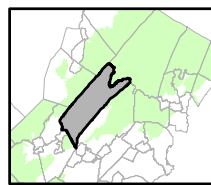
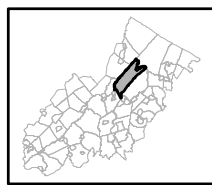


Figure 14: Vernal Pools



-  Vernal Pools + 1000ft Buffer
-  Preservation Area
-  Municipal Boundaries

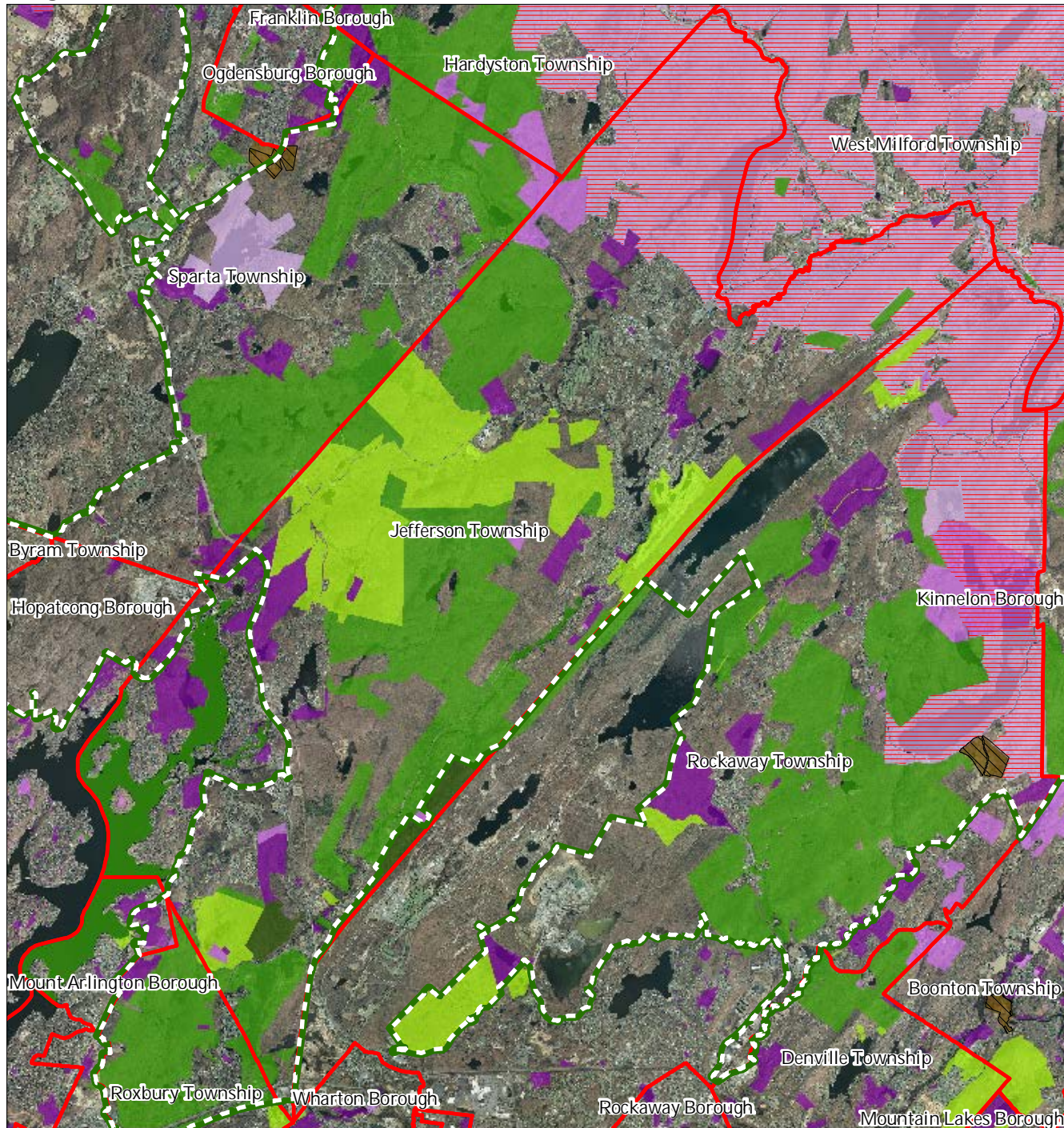
### Jefferson Township



1 inch = 1.5 miles

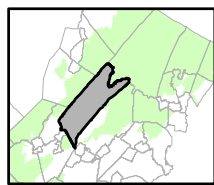
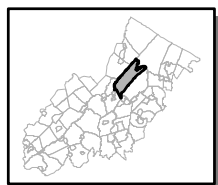


Figure 15: Preserved Lands



- |   |                               |
|---|-------------------------------|
| <b>Preserved Lands</b>                  | <b>Conservation Easements</b> |
| Federal Open Space                      | Green Acres                   |
| State Open Space                        | <b>SADC Easements</b>         |
| County Open Space                       | SADC Final                    |
| Municipal Open Space                    | SADC Preserved                |
| Non-Profit/Private Open Space           | Municipal Boundaries          |
| Water Supply Watershed Lands            | Preservation Area             |
| Preserved Farmland                      |                               |
| Highlands Transfer of Development Lands |                               |

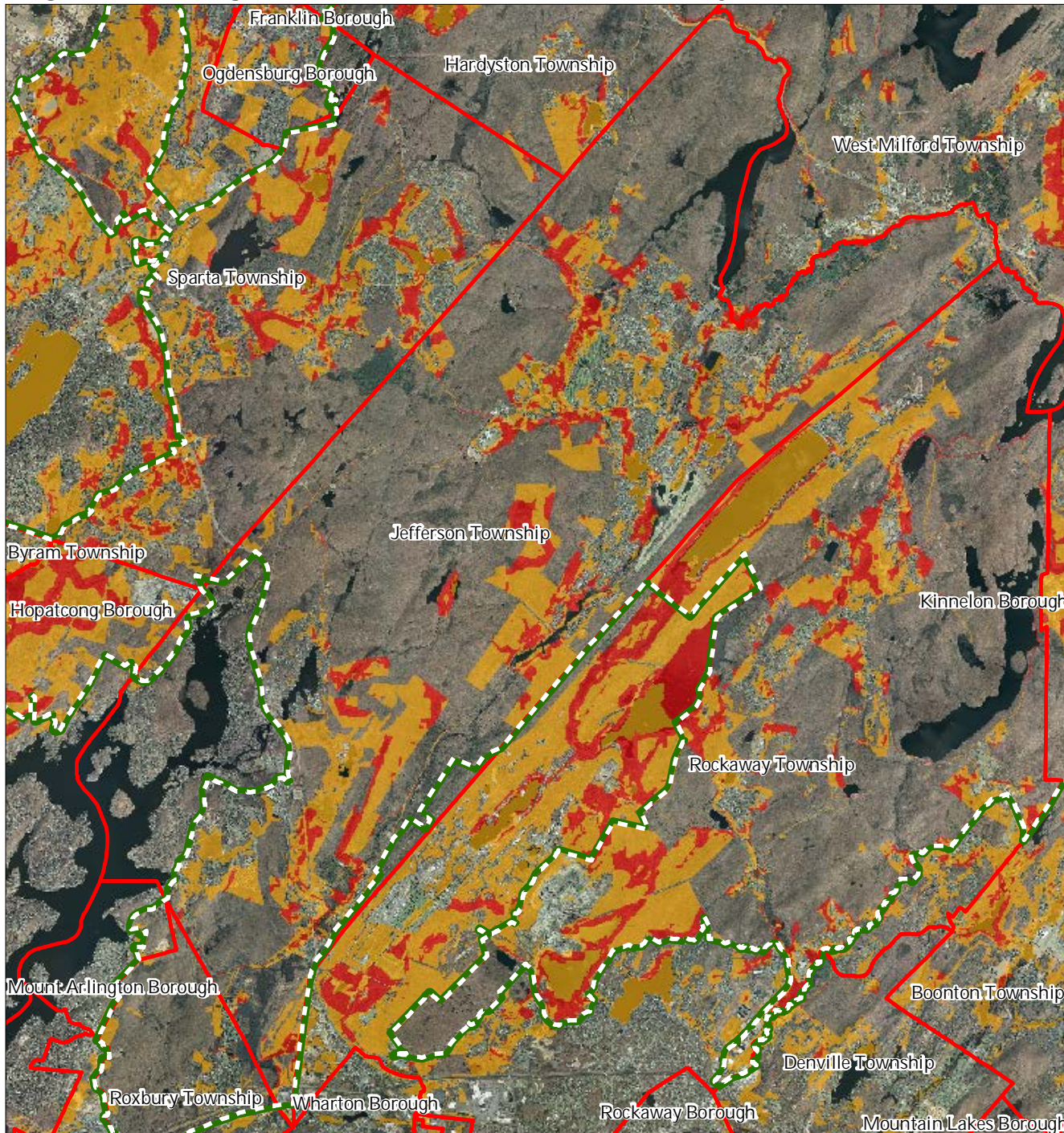
Jefferson Township



1 inch = 1.5 miles



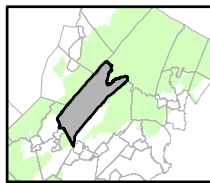
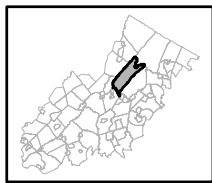
Figure 16: Highlands Conservation Priority Areas



Conservation Priority Area

- Moderate
- High
- Preservation Area
- Municipal Boundaries

Jefferson Township

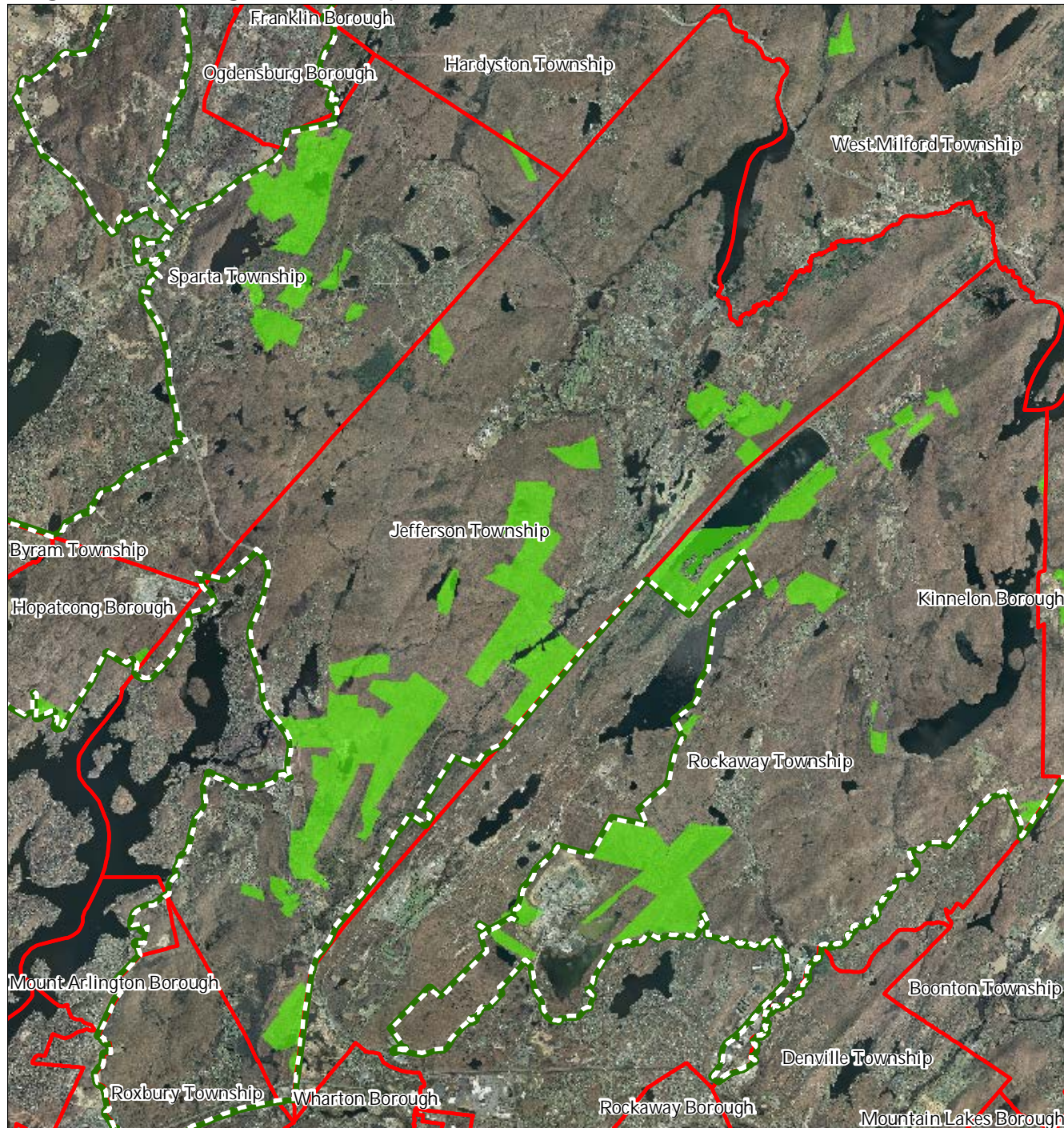


1 inch = 1.5 miles



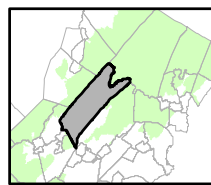
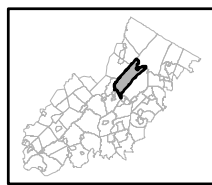


Figure 17: Highlands Special Environmental Zone



- Special Environmental Zones
- Preservation Area Municipal
- Boundaries

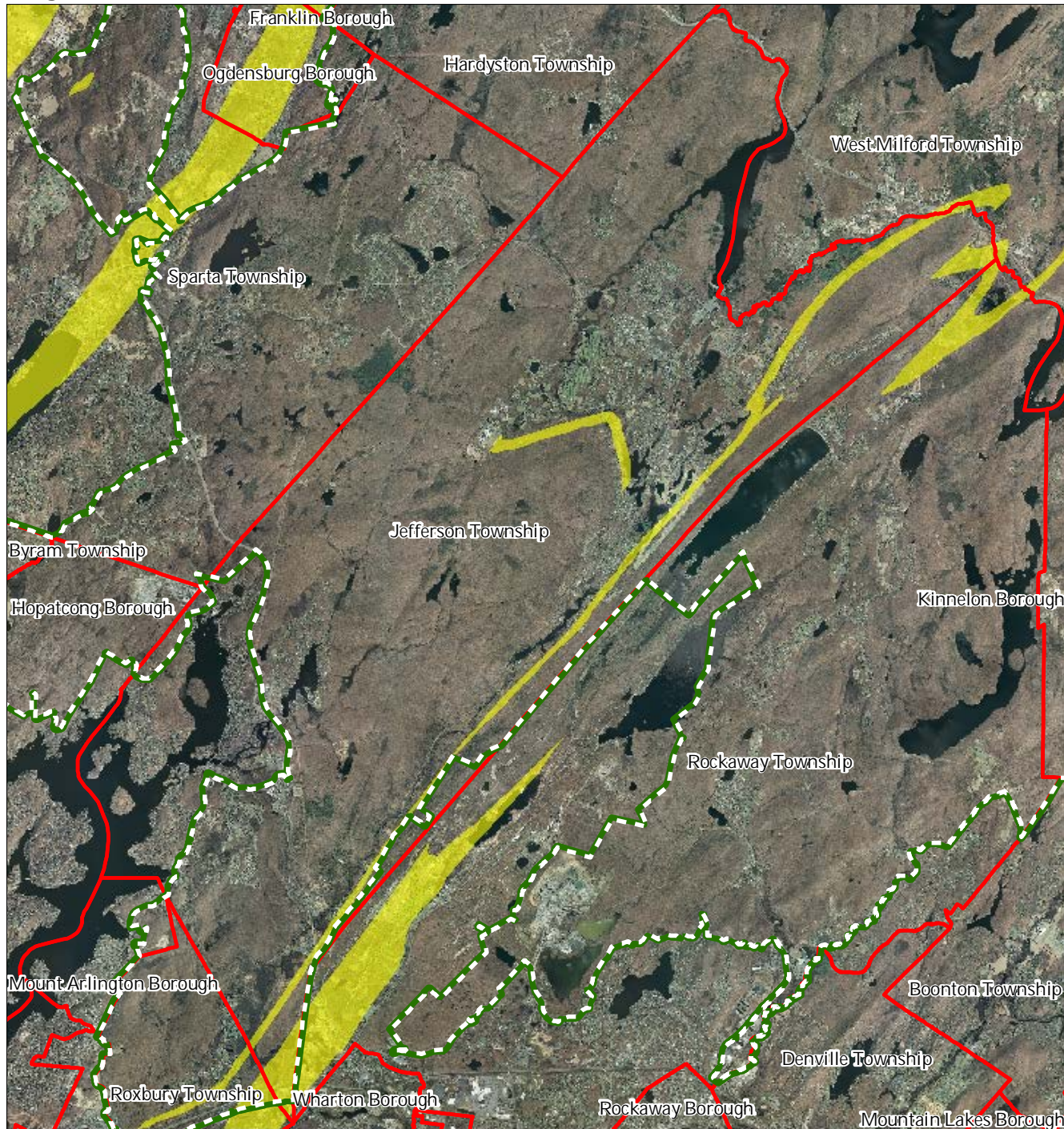
Jefferson Township



1 inch = 1.5 miles

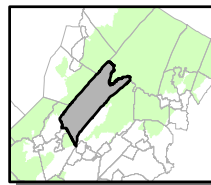
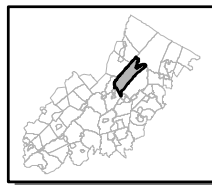


Figure 18: Carbonate Rock Areas



- Carbonate Rock Area
- Preservation Area
- Municipal Boundaries

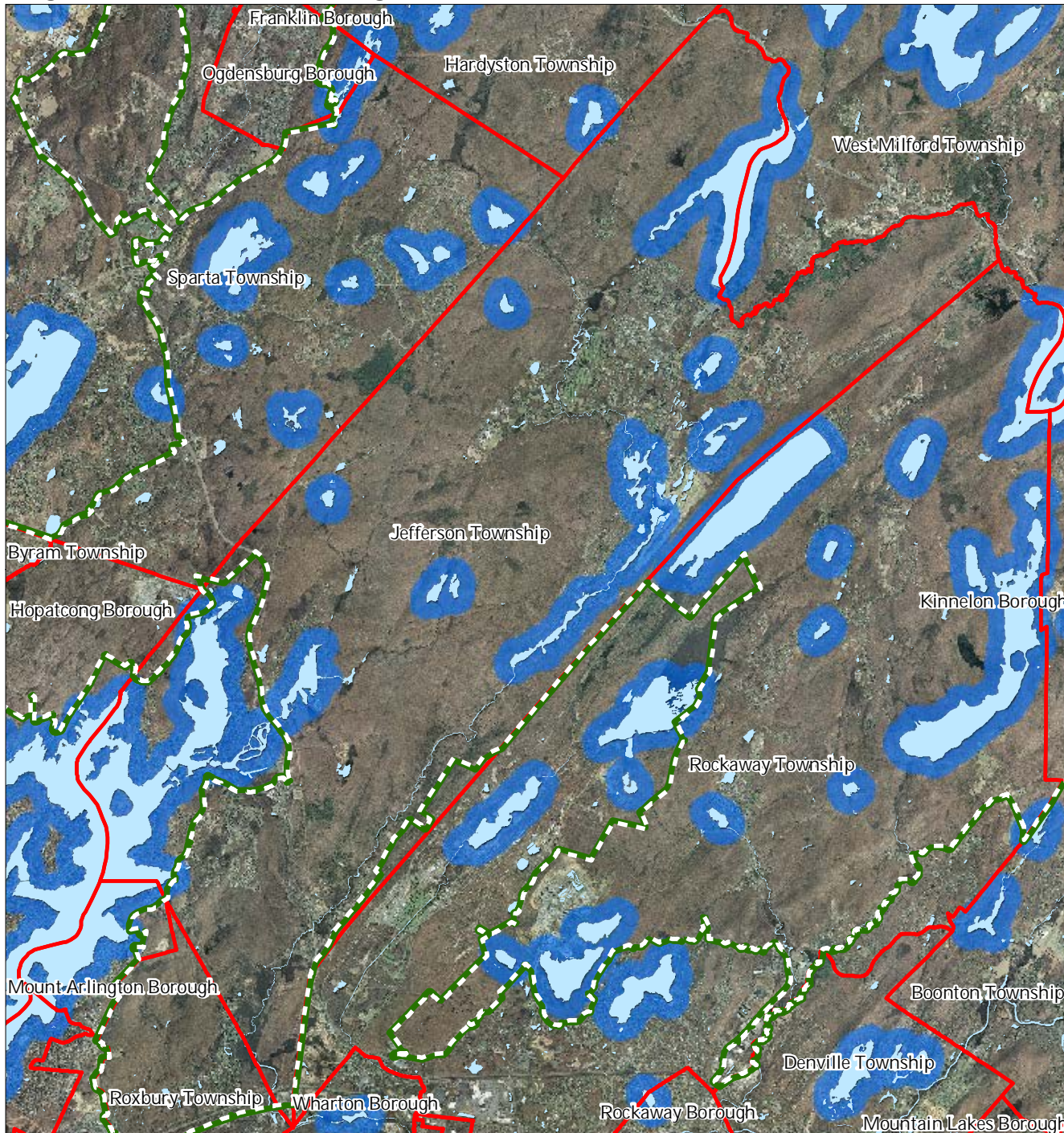
Jefferson Township



1 inch = 1.5 miles

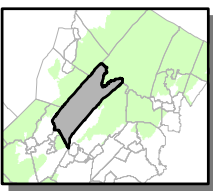
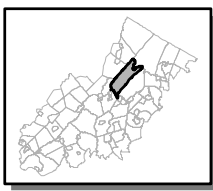


Figure 19: Lake Management Area



- Lakes & Ponds
- Lake Management Area
- Preservation Area
- Municipal Boundaries

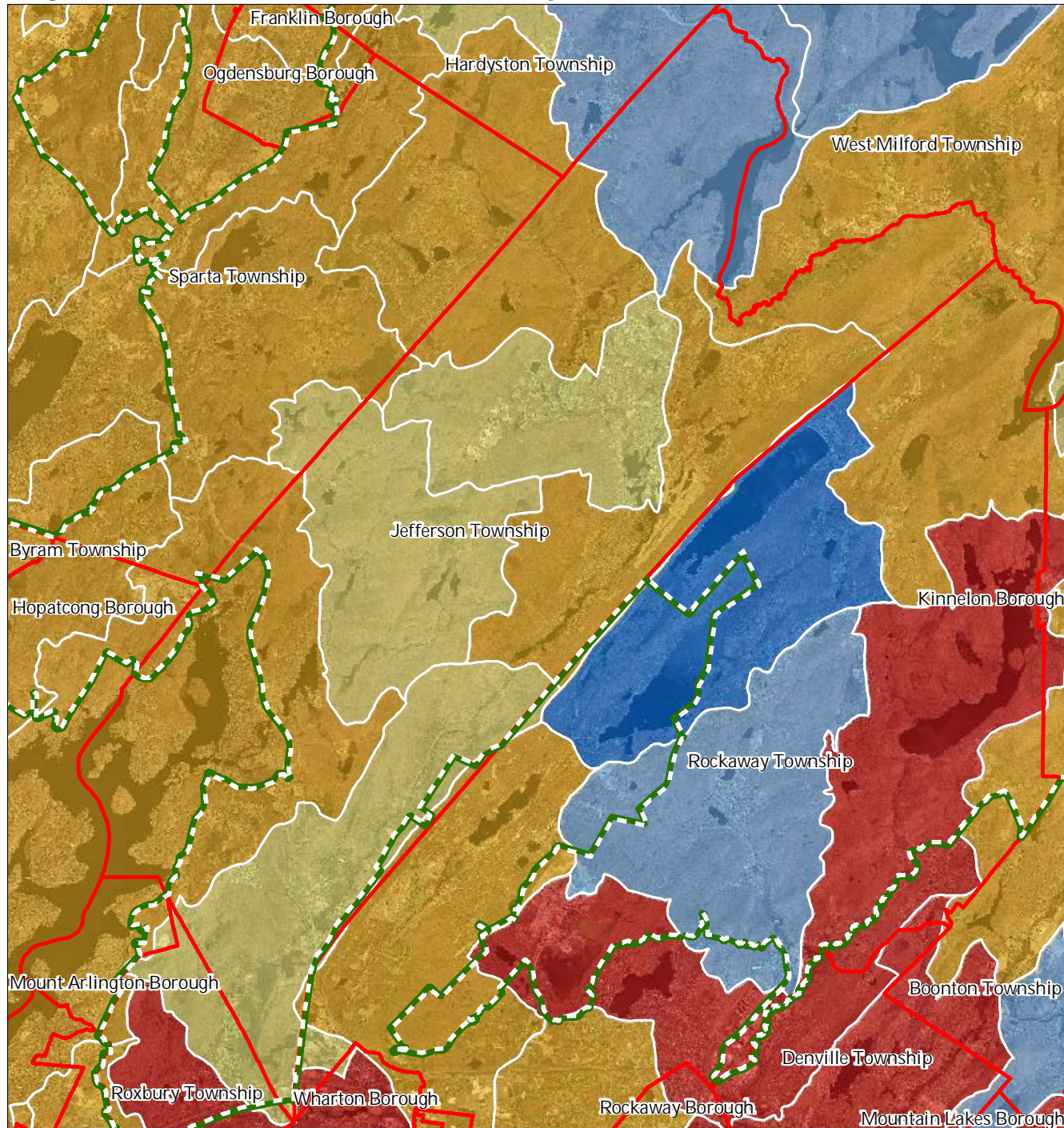
Jefferson Township



1 inch = 1.5 miles



Figure 20: Net Water Availability



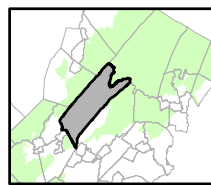
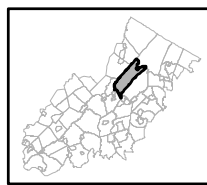
Net Water Availability By HUC14

Million Gallons Per Day (MGD)

- 0.10 - 0.39
- 0.05 - 0.09
- 0.00 - 0.04
- 0.09 - 0.00
- 0.99 - -0.10
- 7.10 - -1.00

- Preservation Area
- Municipal Boundaries

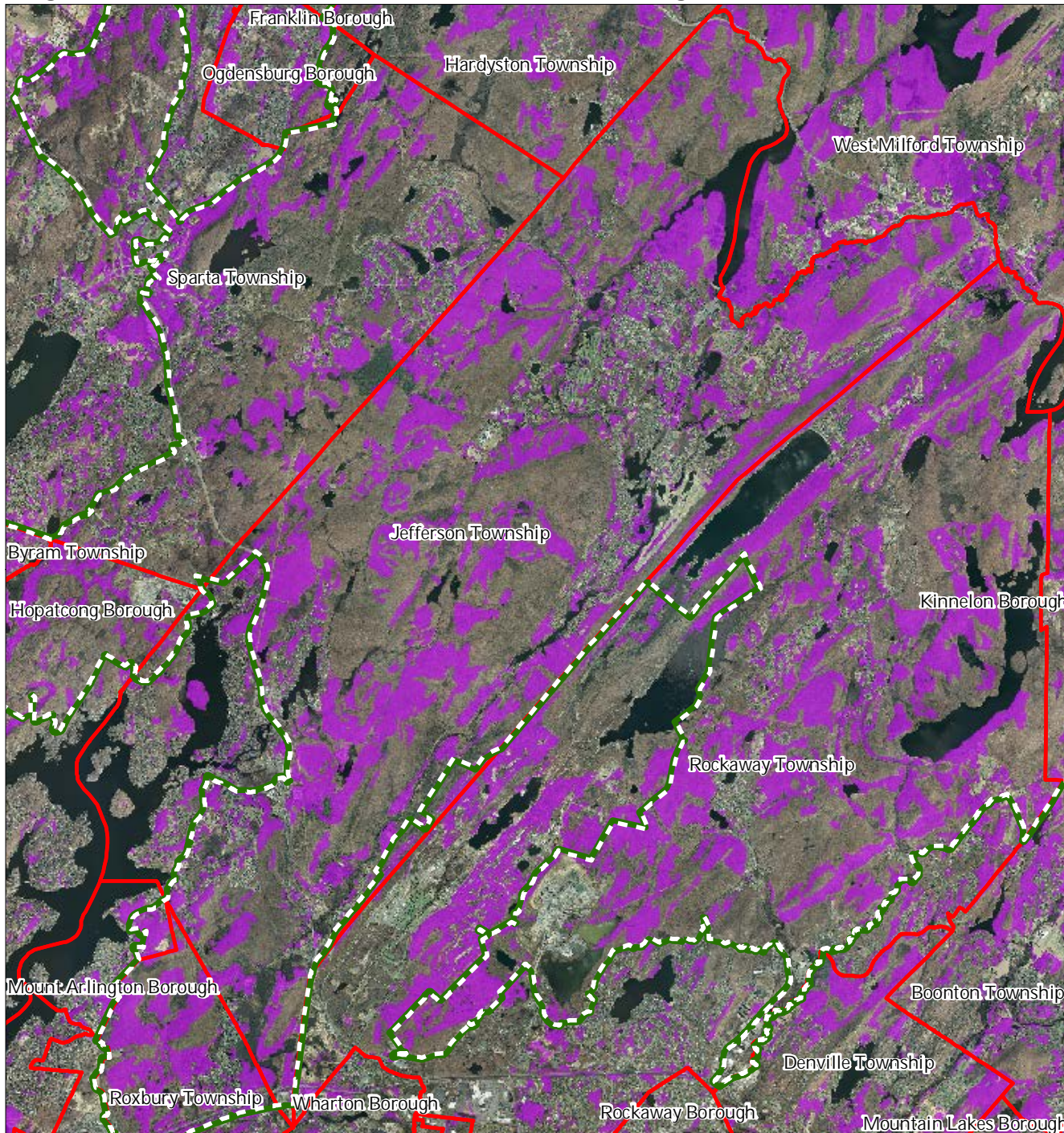
Jefferson Township



1 inch = 1.5 miles

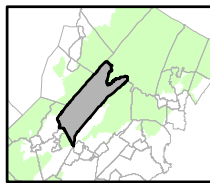
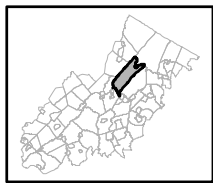


Figure 21: Prime Ground Water Recharge Areas



- Prime Ground Water Recharge Areas
- Preservation Area
- Municipal Boundaries

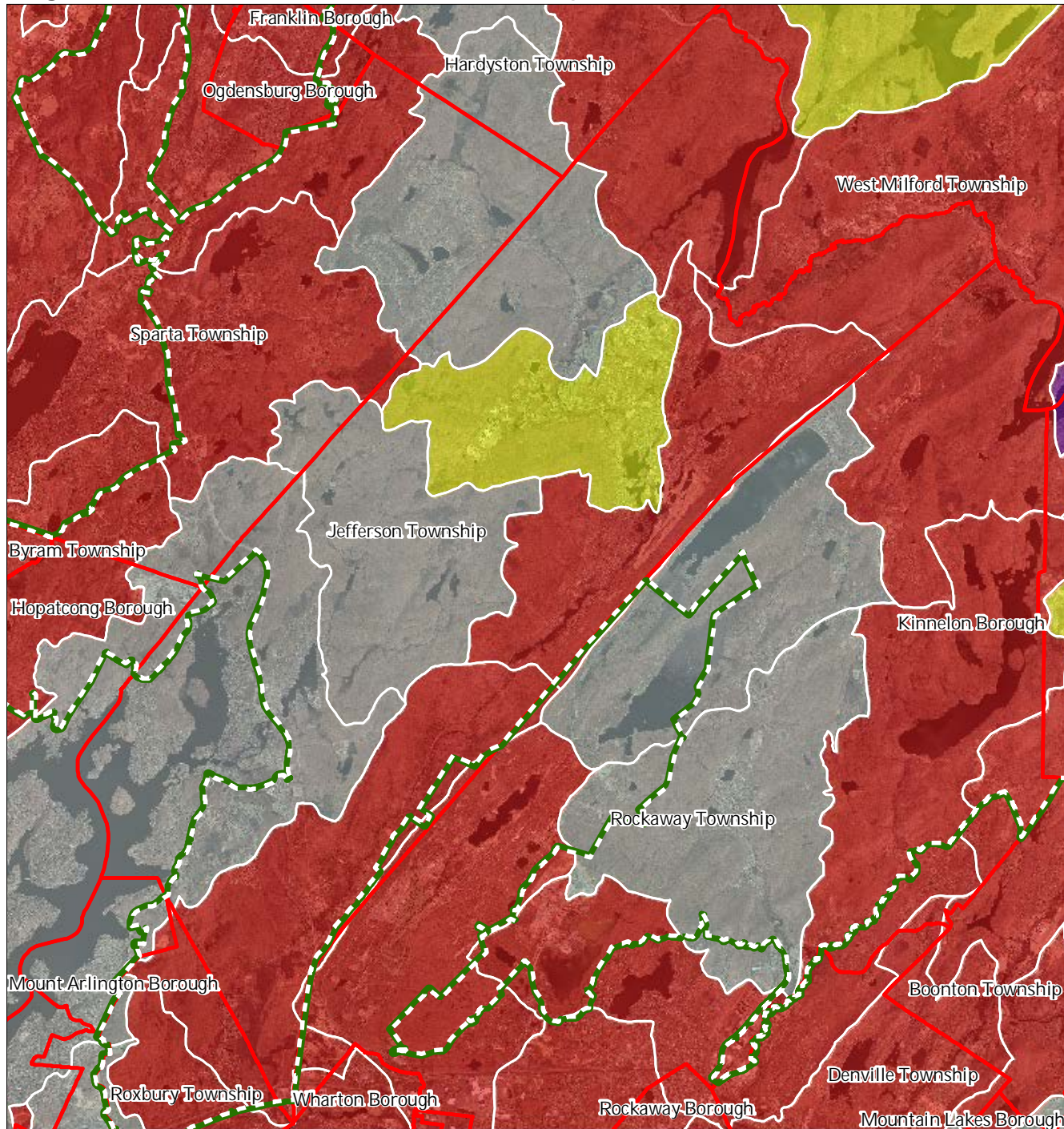
Jefferson Township



1 inch = 1.5 miles



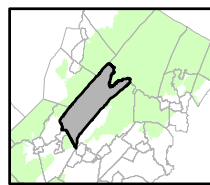
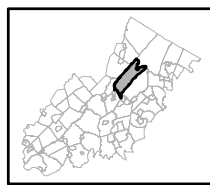
Figure 22: HUC 14s on NJDEP Impaired Waters List



Impaired Waters Overall Assessment by HUC14 Subwatershed

- Non Impacted
- Insufficient Data Available
- Moderate
- Water Quality Impaired
- Preservation Area
- Municipal Boundaries

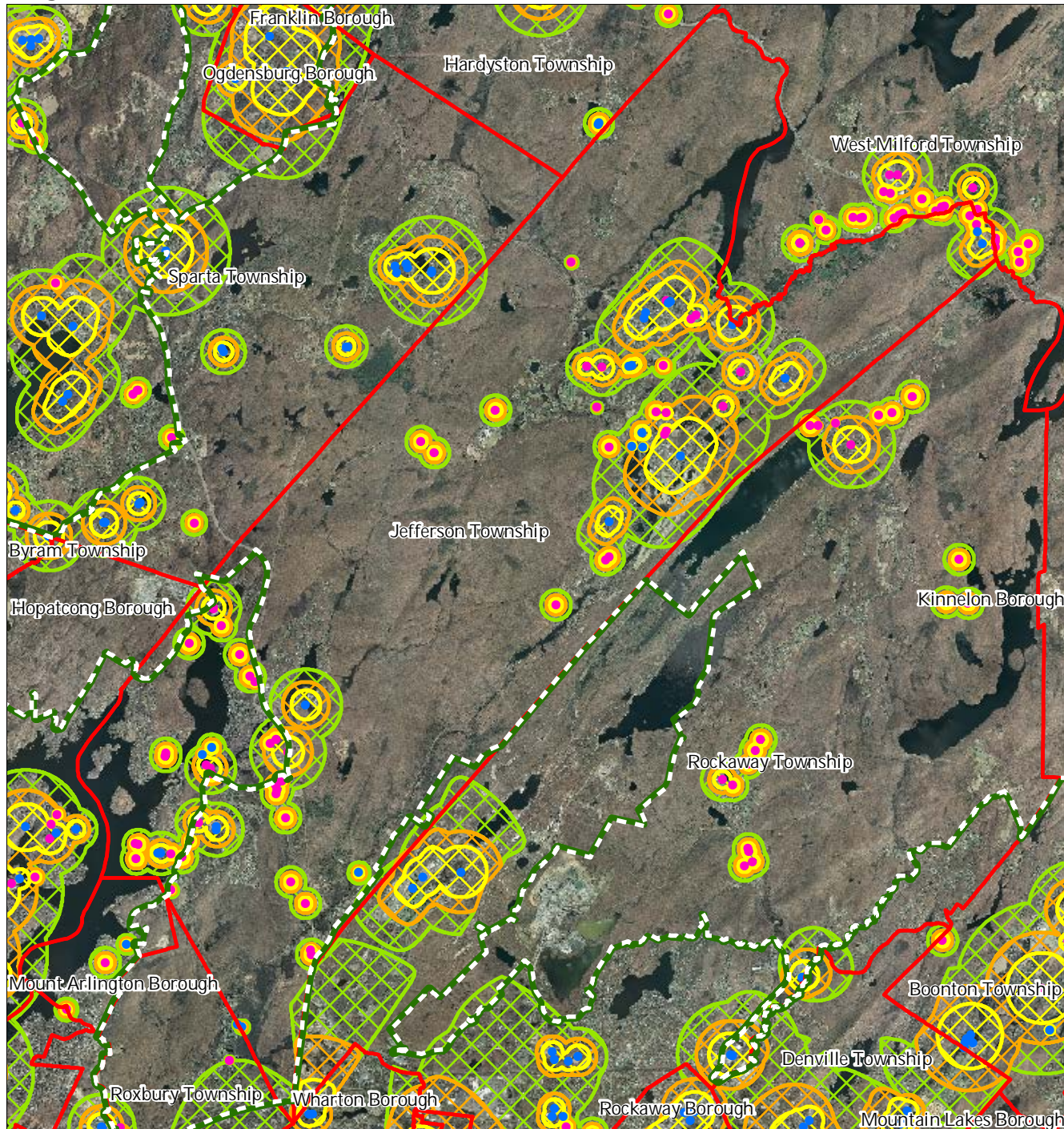
### Jefferson Township



1 inch = 1.5 miles



Figure 23: Wellhead Protection Areas



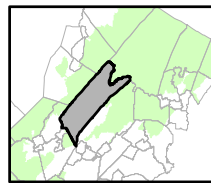
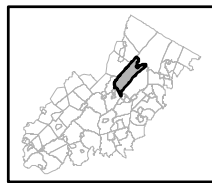
- Public Community Wells
- Public Non-Community Wells

Wellhead Protection Areas

- 2-Year Tier
- 5-Year Tier
- 12-Year Tier

- Preservation Area
- Municipal Boundaries

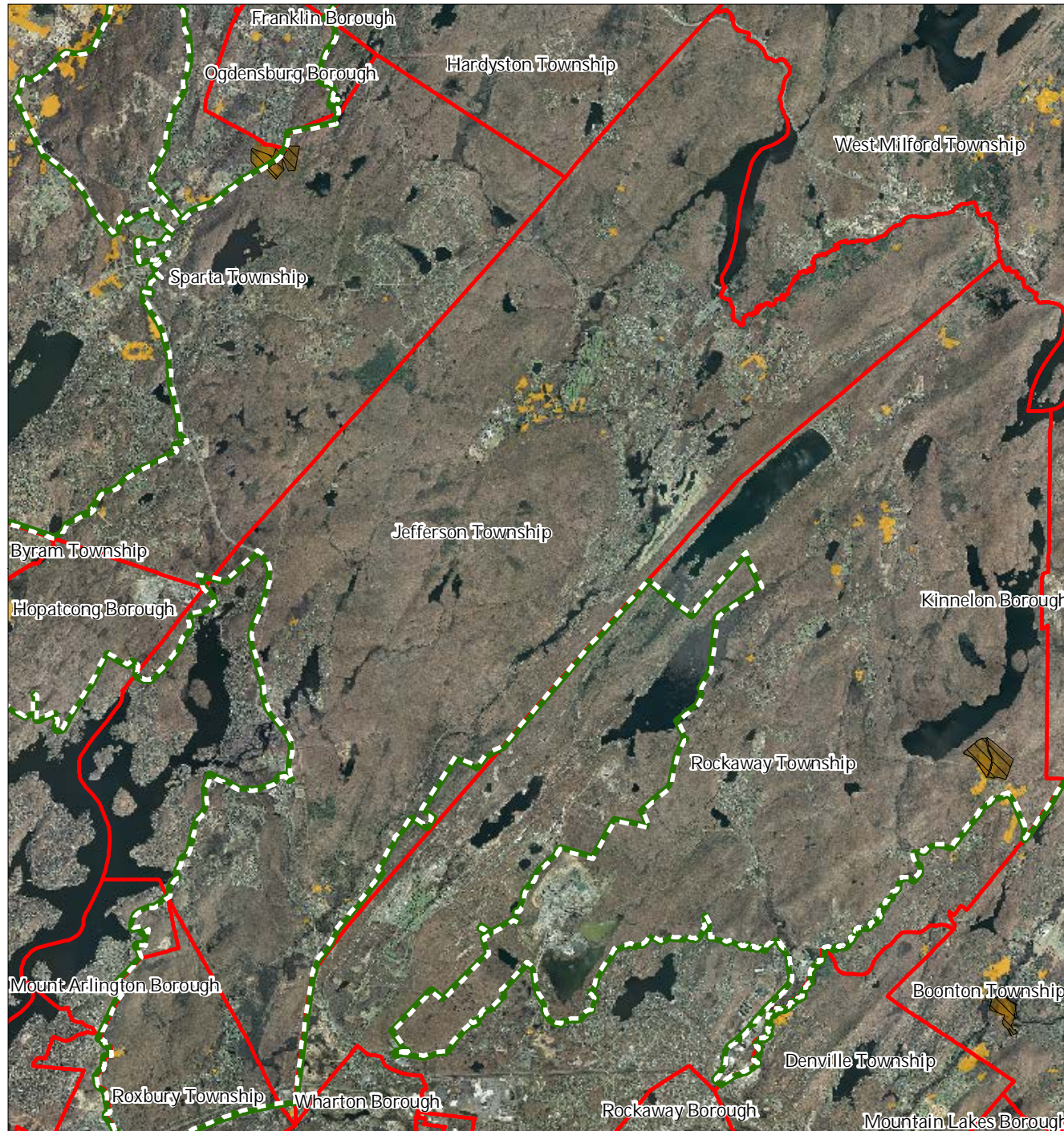
Jefferson Township



1 inch = 1.5 miles



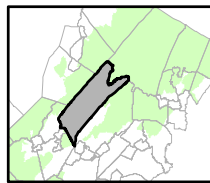
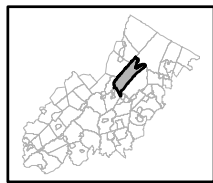
Figure 26: All Agricultural Uses



SADC Easements

-  *SADC Final*
-  *SADC Preserved*
-  Preserved Farmland
-  Agriculture Uses
-  Preservation Area
-  Municipal Boundaries

Jefferson Township

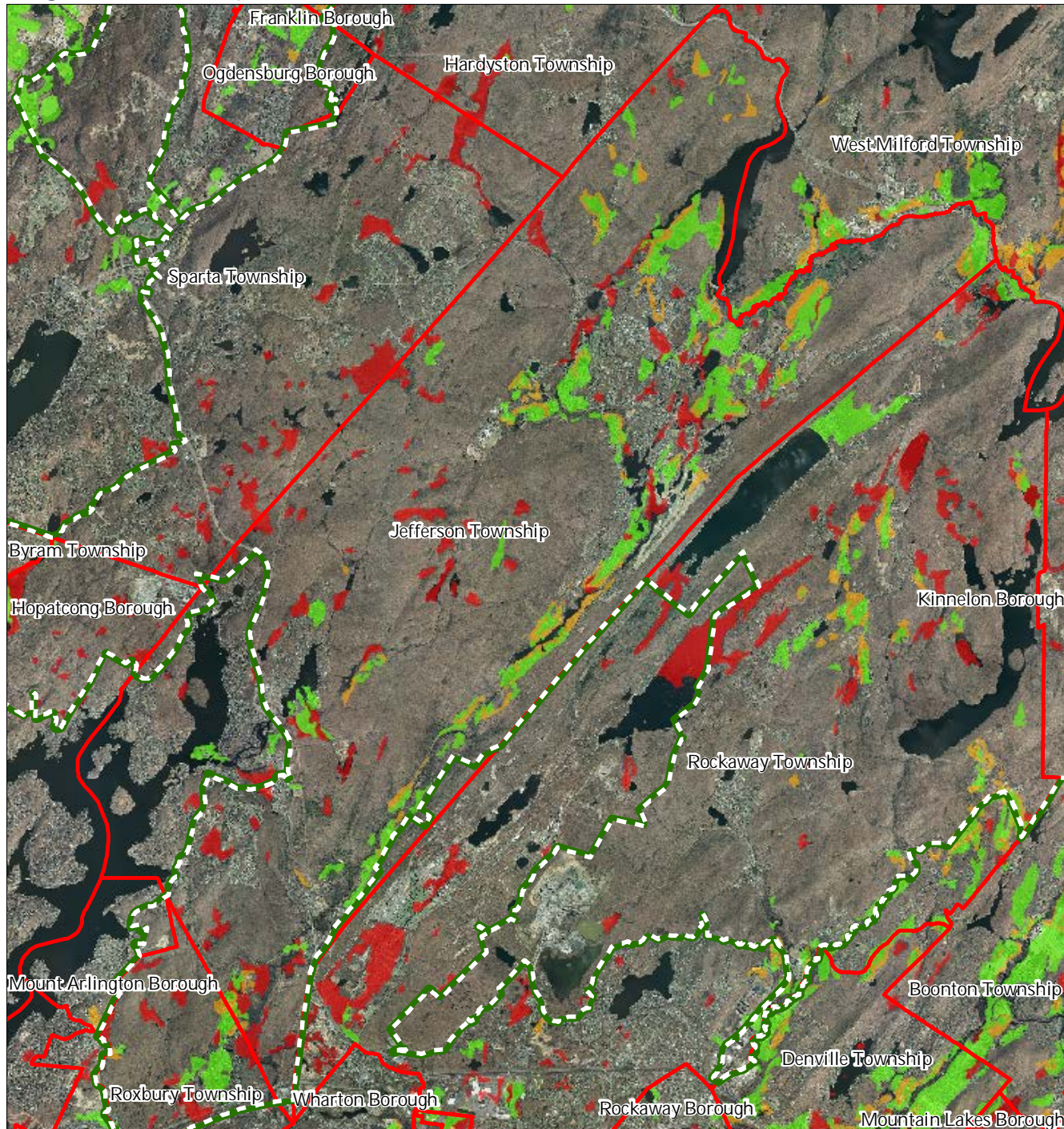


1 inch = 1.5 miles





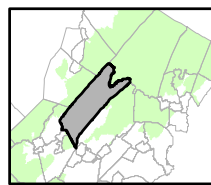
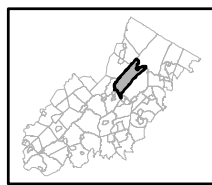
Figure 27: Important Farmland Soils



Important Farmland Soils

- Prime Farmland
- Farmland of Local Importance
- Farmland of Statewide Importance
- Farmland of Unique Importance
- Preservation Area
- Municipal Boundaries

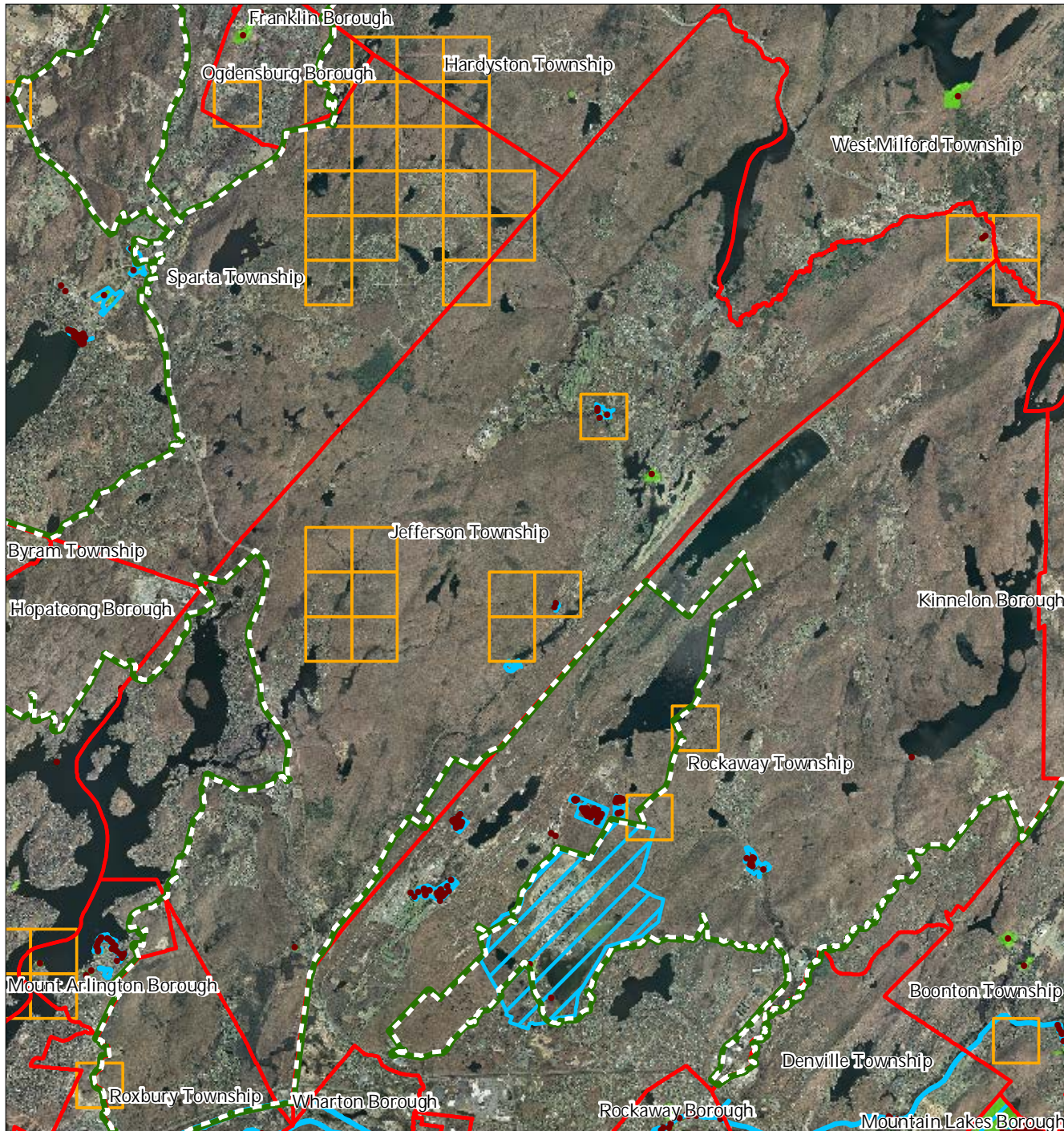
Jefferson Township



1 inch = 1.5 miles

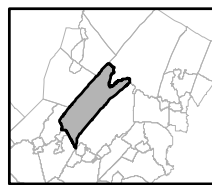
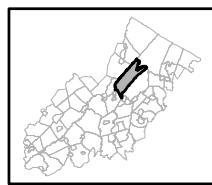


Figure 28: Historic, Cultural, and Archaeological Resources Inventory



-  Preservation Area
-  Municipal Boundaries
-  Archaeological Grids (1 sqmi)
-  NJ Historic Districts
-  Historic Property Points
-  Historic Property Polygons

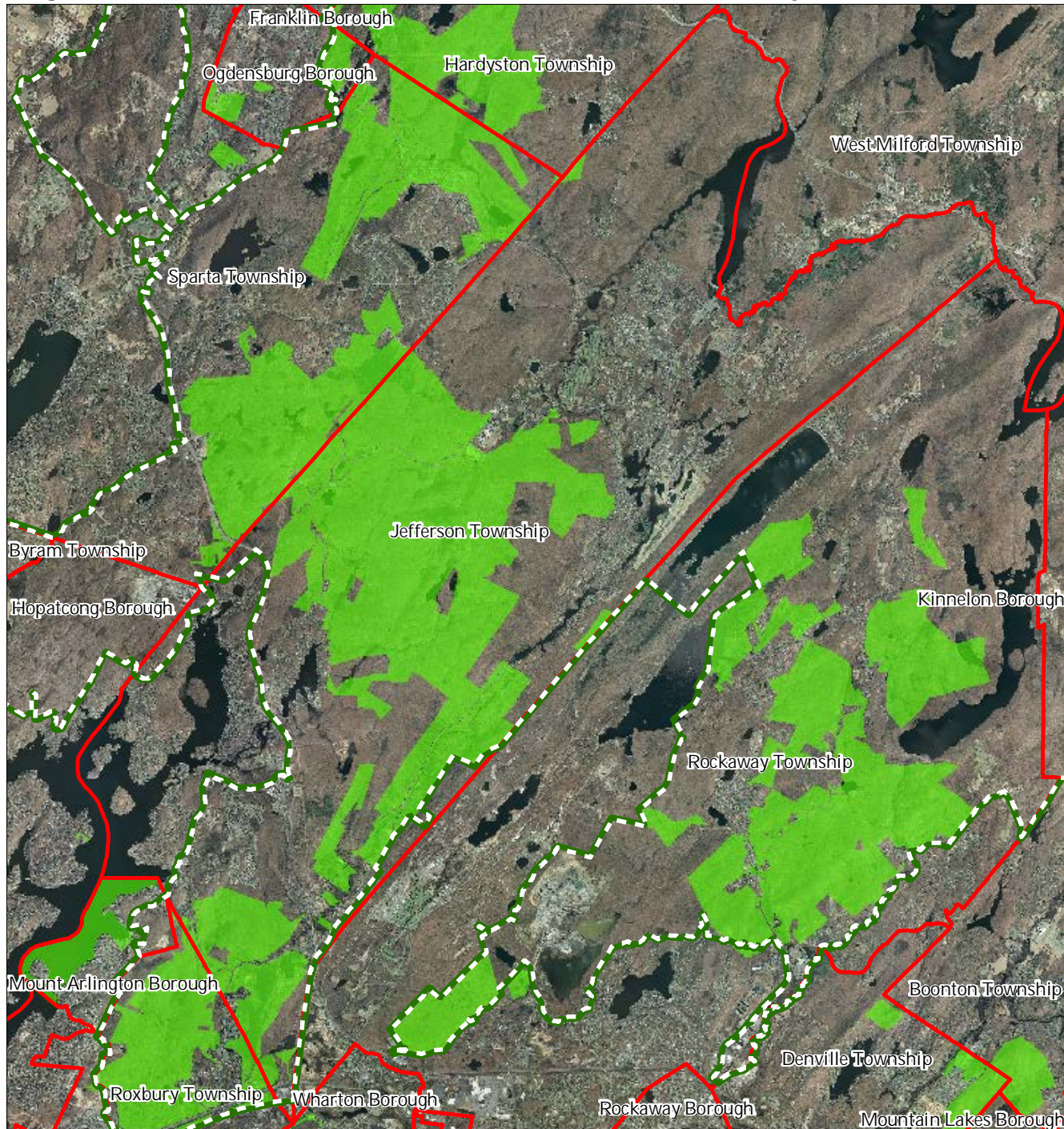
Jefferson Township



1 inch = 1.5 miles

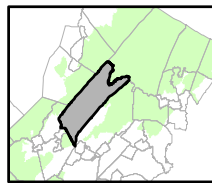
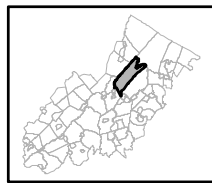


Figure 29: Baseline Scenic Resources Inventory



- Scenic Resources
- Municipal Boundaries
- Preservation Area

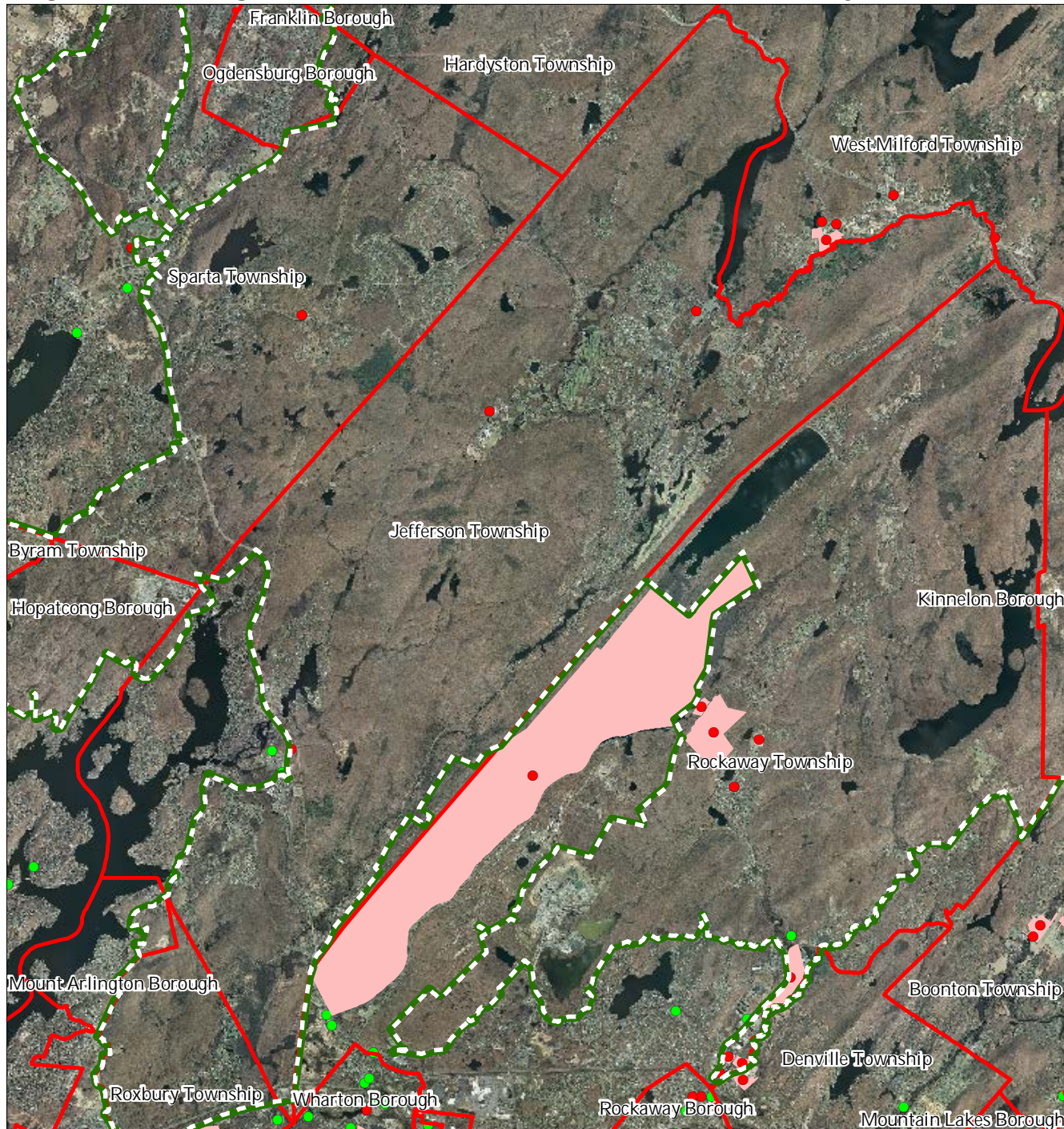
Jefferson Township



1 inch = 1.5 miles



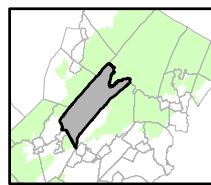
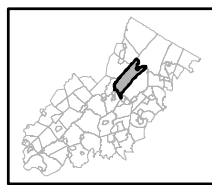
Figure 30: Highlands Contaminated Site Inventory



Highlands Contaminated Site Inventory

- Tier 1 Sites
- Tier 1 Sites (Polygons)
- Tier 2 Sites
- ▬ Preservation Area
- ▬ Municipal Boundaries

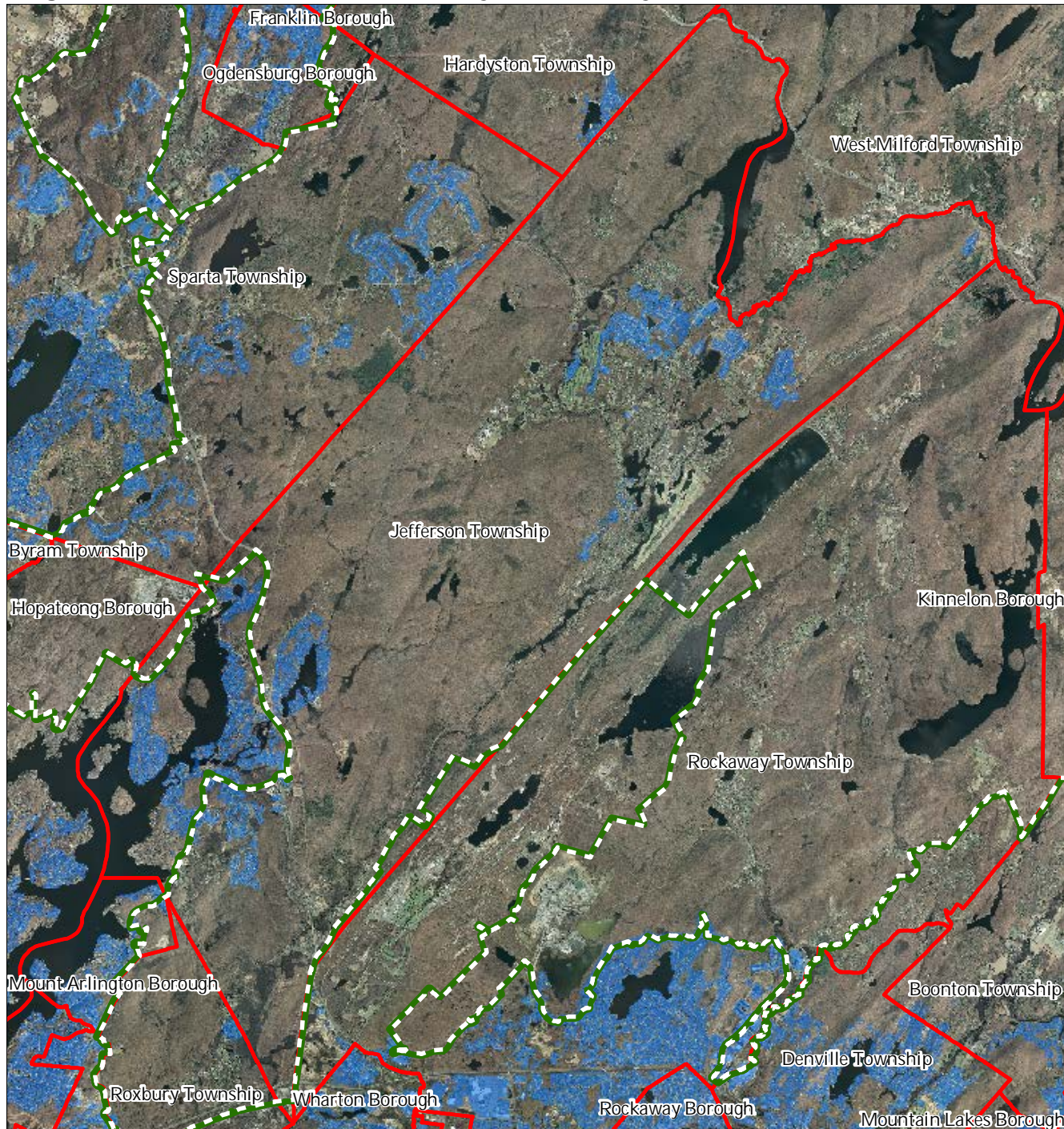
Jefferson Township



1 inch = 1.5 miles

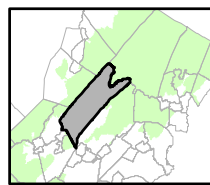
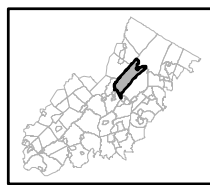


Figure 31: Public Community Water Systems



- Public Community Water Systems
- Preservation Area
- Municipal Boundaries

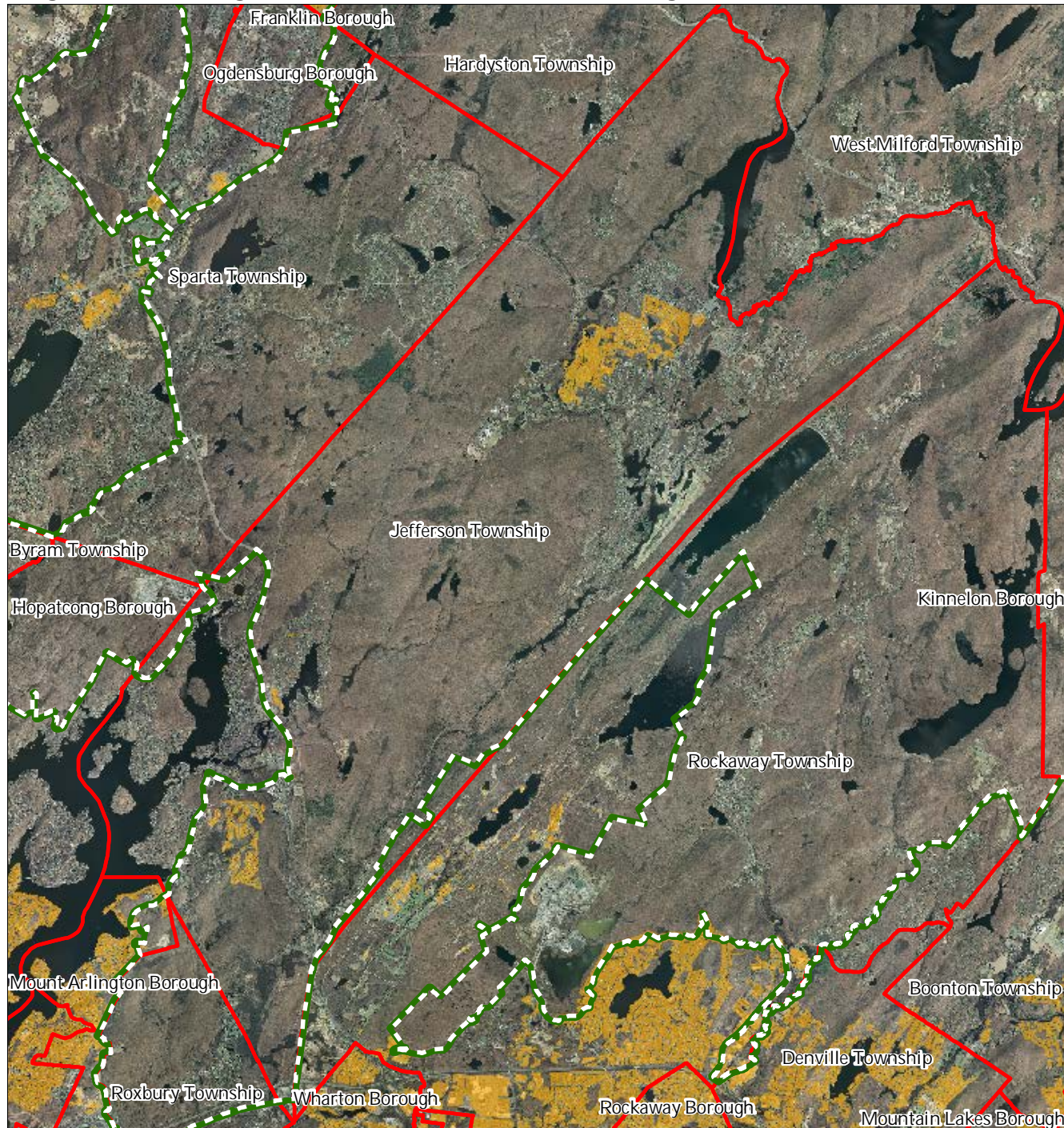
Jefferson Township






1 inch = 1.5 miles



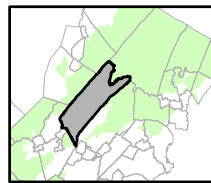
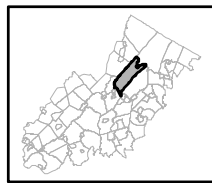
Figure 32: Highlands Domestic Sewerage Facilities



Highlands Domestic Sewerage Facilities

-  Existing Area Served
-  Preservation Area
-  Municipal Boundaries

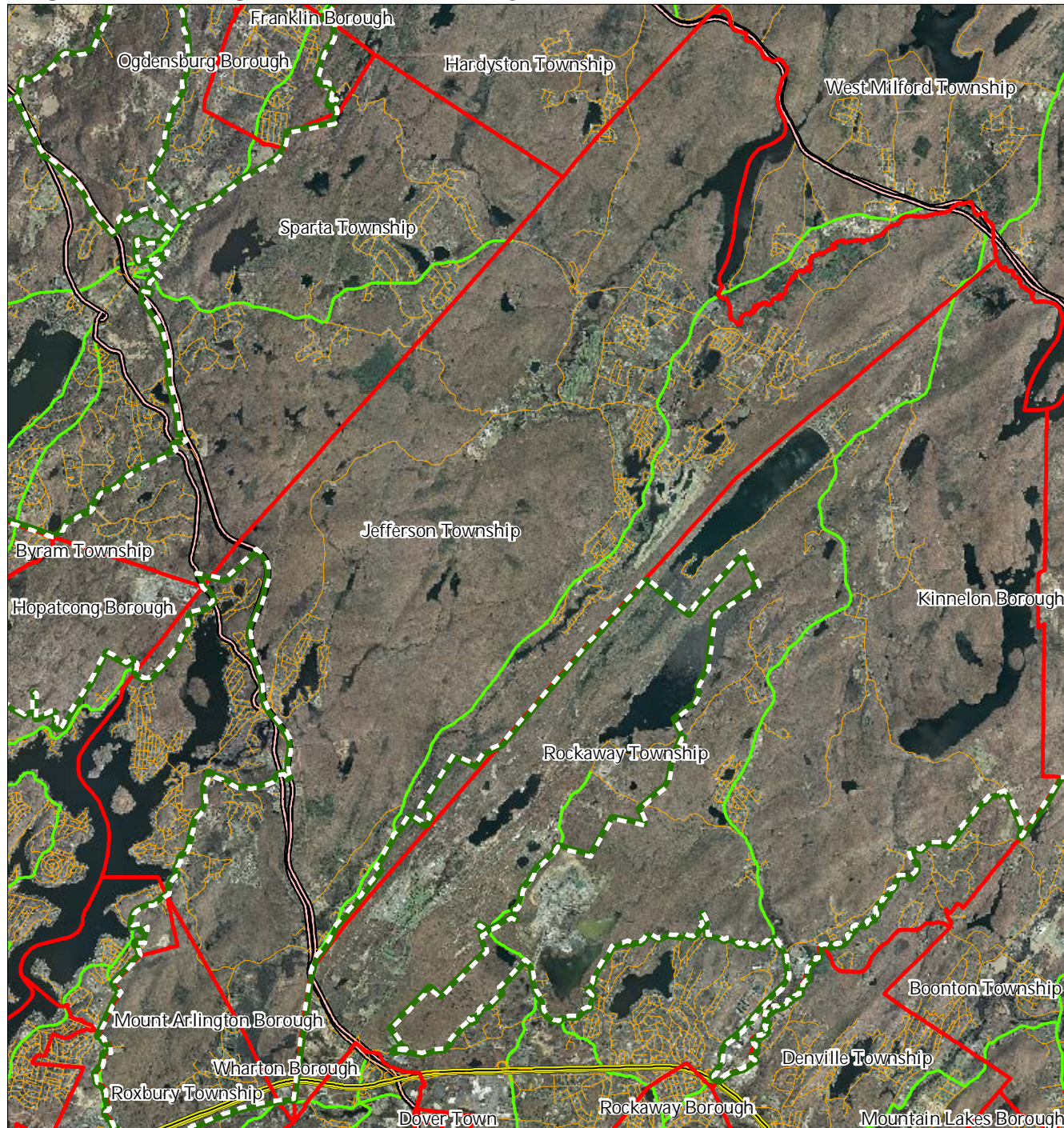
Jefferson Township



1 inch = 1.5 miles



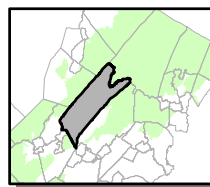
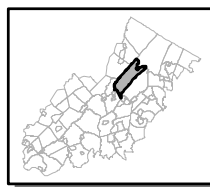
Figure 33: Highlands Roadway Network



Roadway Network

-  Interstate Highways
-  U.S. Routes
-  State Routes
-  County Routes
-  Local Routes
-  Preservation Area
-  Municipal Boundaries

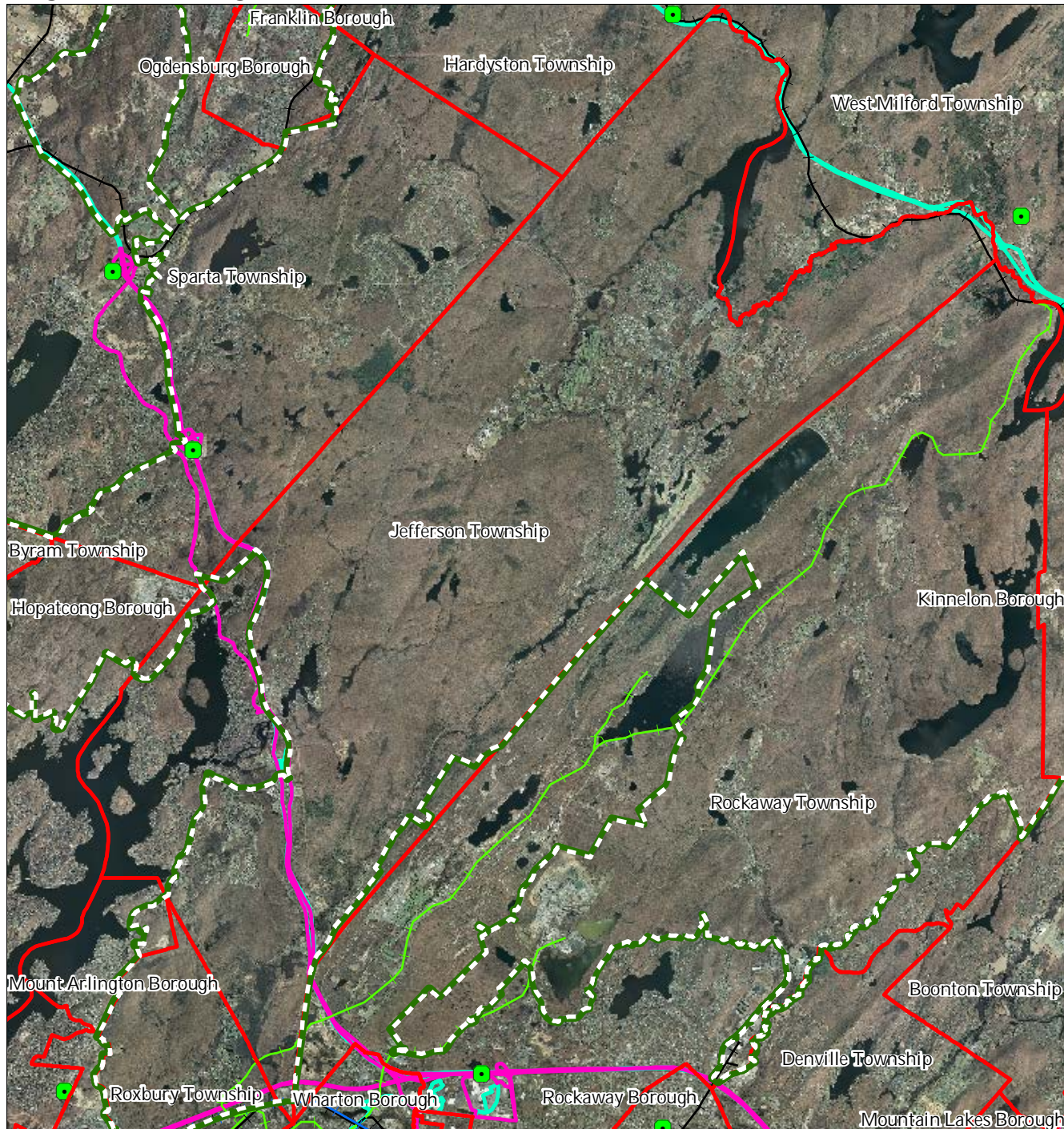
Jefferson Township



1 inch = 1.5 miles

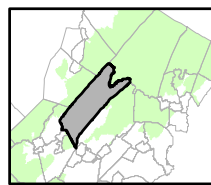
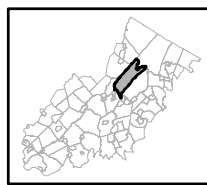


Figure 34: Highlands Transit Network



- |   |                      |
|---|----------------------|
| <b>Rail Network</b>                       | Rail Stations        |
| <i>Boonton Line</i>                       | Park and Ride Sites  |
| <i>Main Line &amp; Bergen County Line</i> | Private Bus Lines    |
| <i>Morris and Essex Line</i>              | NJ Transit Bus Lines |
| <i>Raritan Valley Line</i>                | Airports             |
| <b>Freight Rail Lines</b>                 |                      |
| <i>Freight Rail Lines</i>                 |                      |
| <i>Abandoned Freight Rail</i>             |                      |

Jefferson Township



1 inch = 1.5 miles

