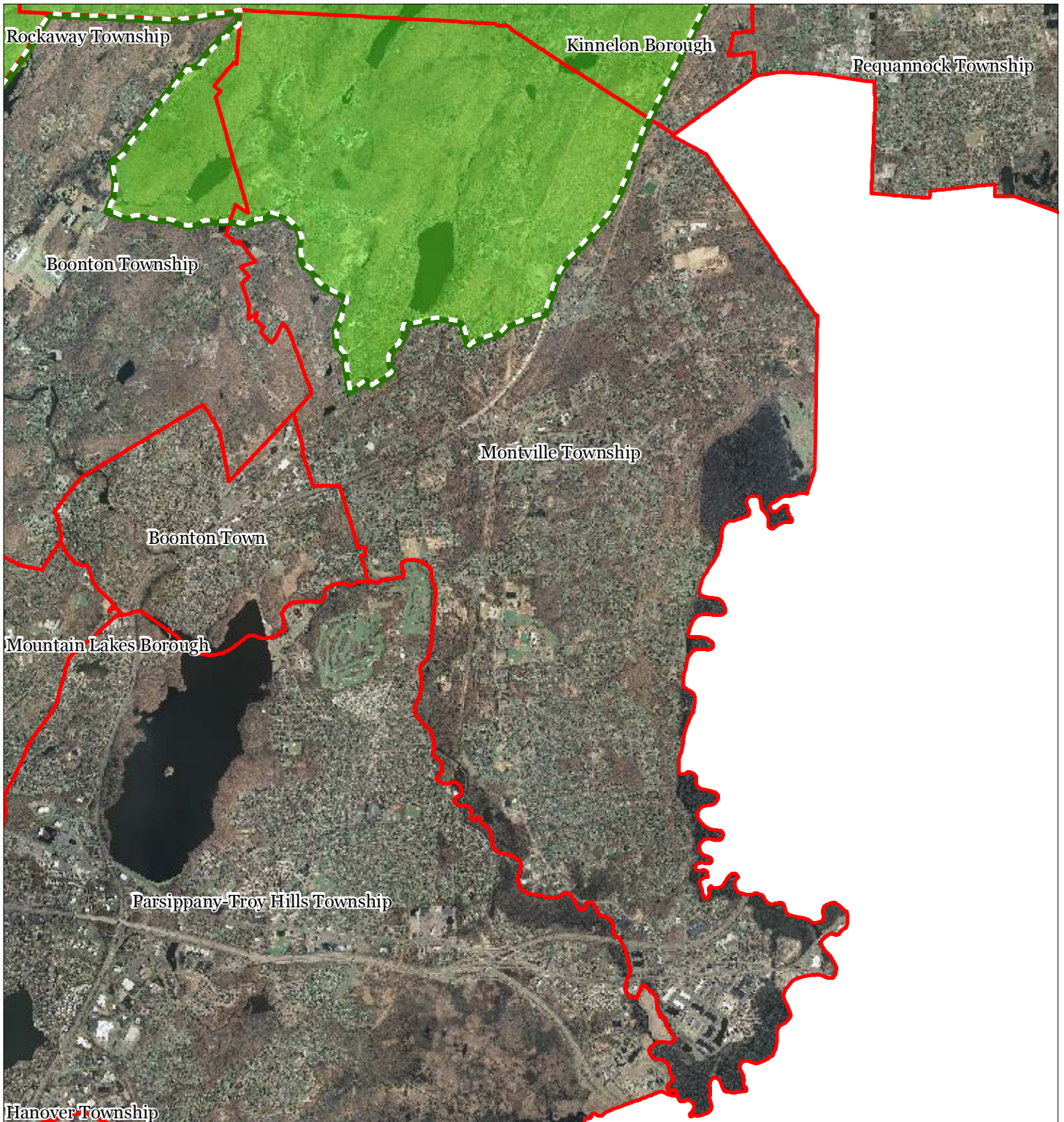


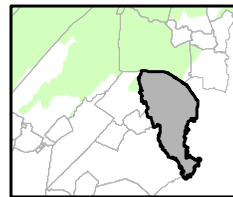
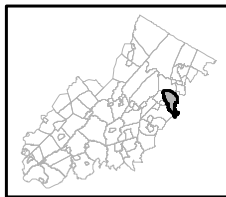


Figure 1: Preservation Area



-  Preservation Area
-  Municipal Boundaries

Montville Township



1 inch = 0.943 miles



September 2011

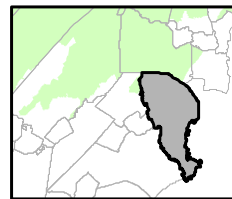
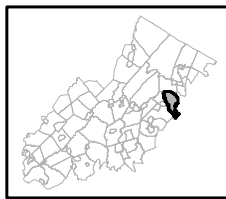
Figure 2: Land Use Capability Map Zones



Regional Master Plan Overlay Zone Designation

- | | |
|--|-----------------------------|
| Zone | Lakes Greater Than 10 acres |
| Protection | Preservation Area |
| Conservation | Municipal Boundaries |
| Existing Community | |
| Sub-Zone | |
| Existing Community Environmentally Constrained | |
| Conservation Environmentally Constrained | |
| Lake Community | |
| Wildlife Management | |

Montville Township

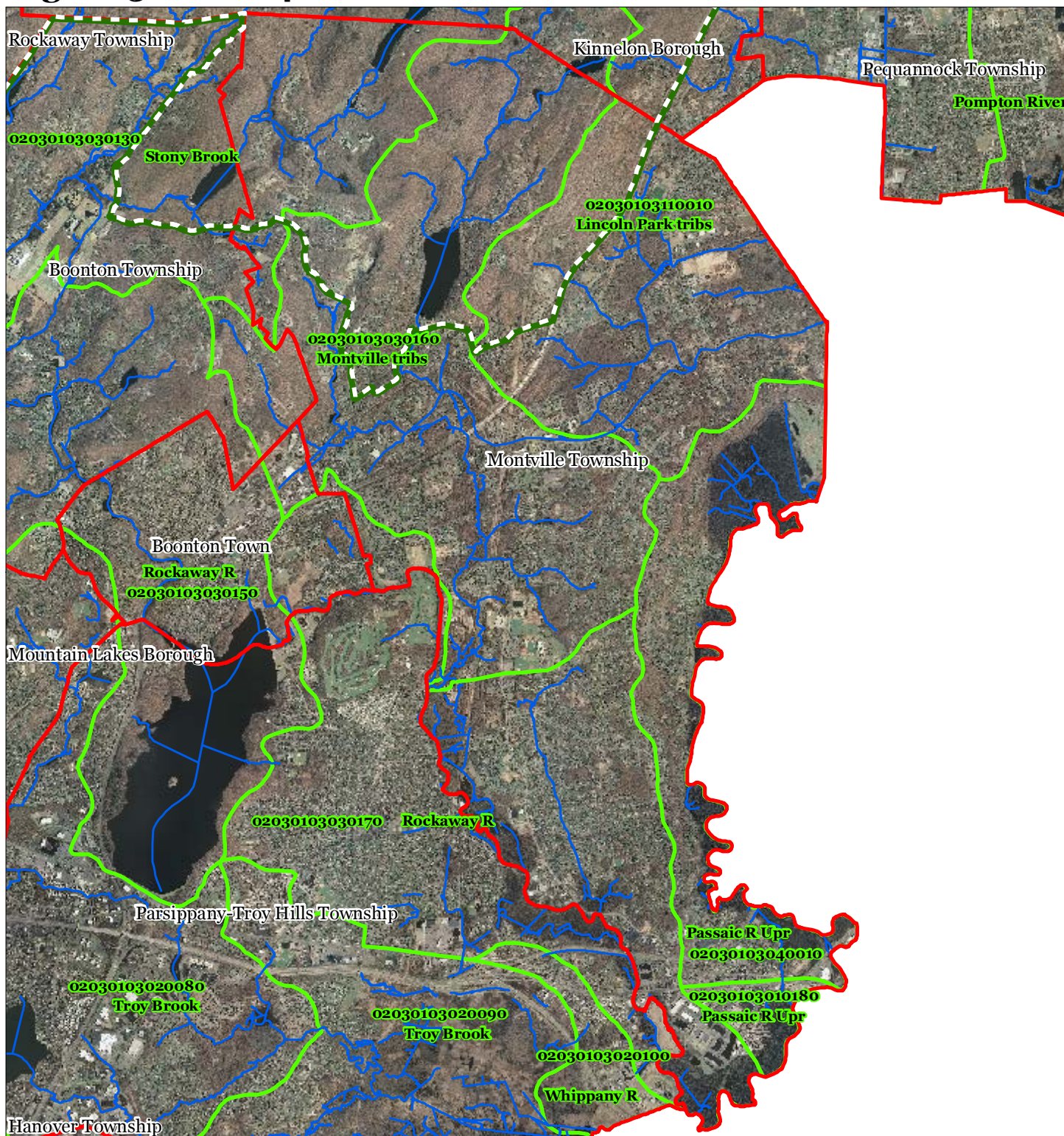


1 inch = 0.943 miles



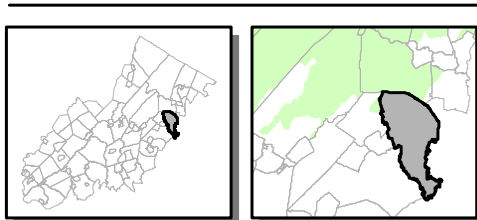
September 2011

Figure 3: HUC 14 Boundaries



- HUC 14 Subwatersheds
- Stream Centerlines
- Preservation Area
- Municipal Boundaries

Montville Township

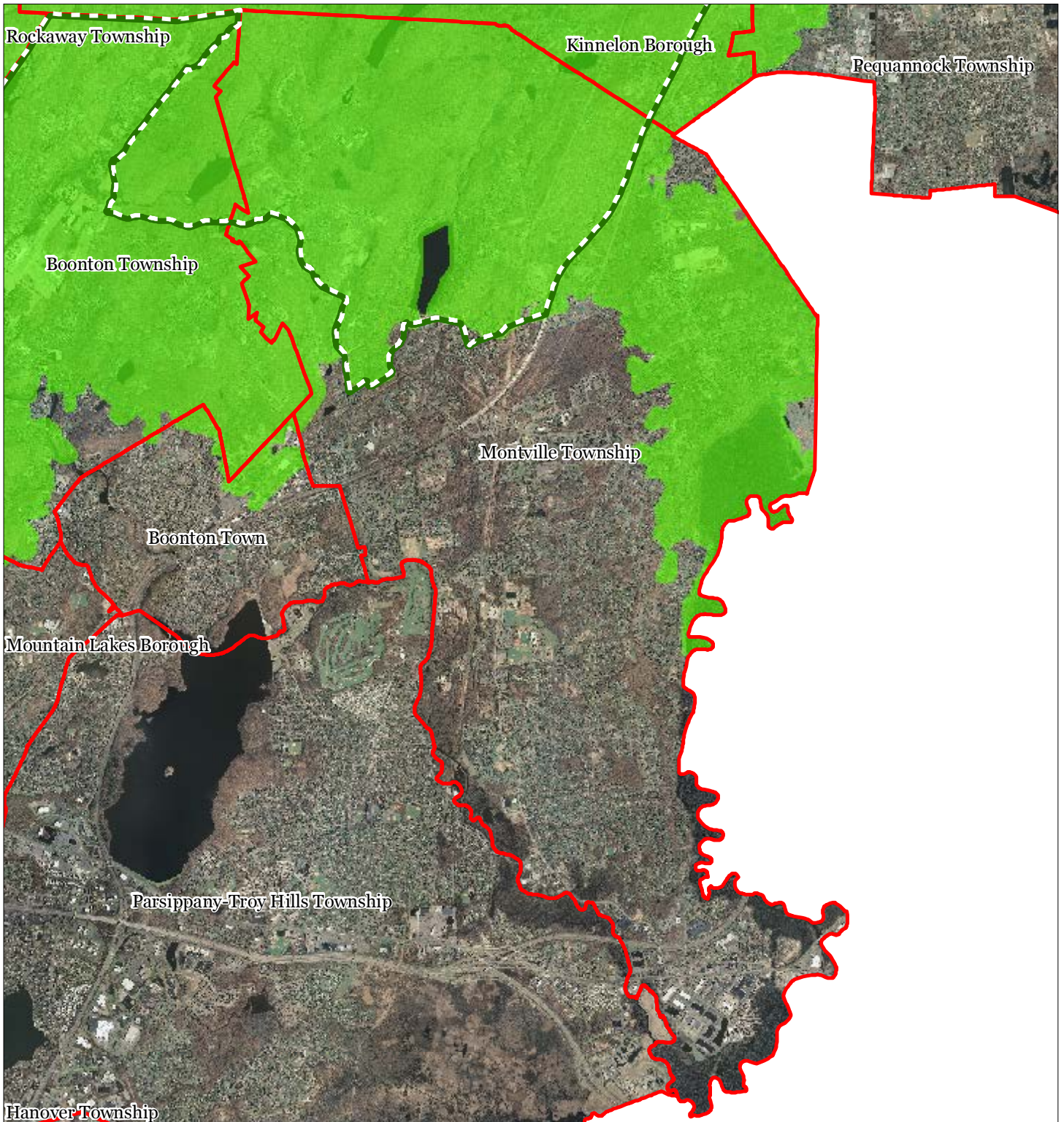





1 inch = 0.943 miles



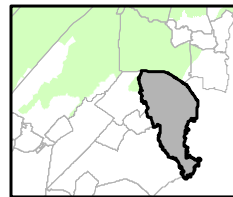
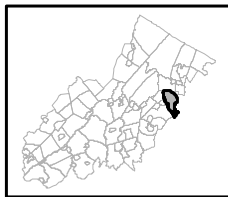
September 2011

Figure 4: Forest Resource Area



-  Forest Resource Area
-  Preservation Area
-  Municipal Boundaries

Montville Township

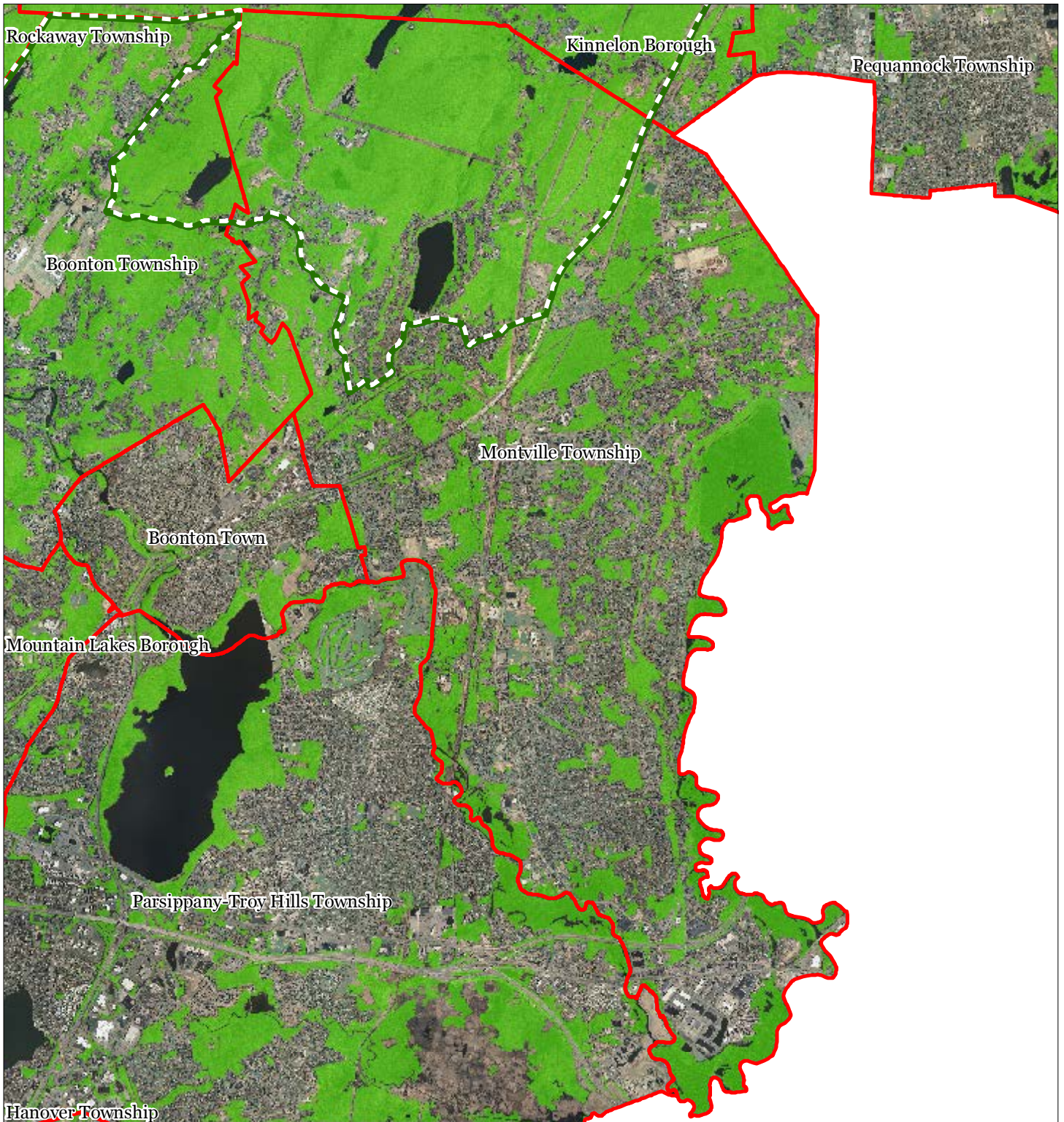





1 inch = 0.943 miles



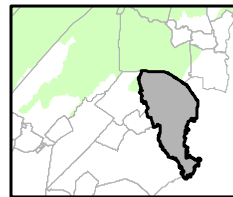
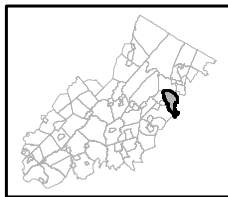
September 2011

Figure 5: Total Forest Area



-  Forested Areas
-  Preservation Area
-  Municipal Boundaries

Montville Township

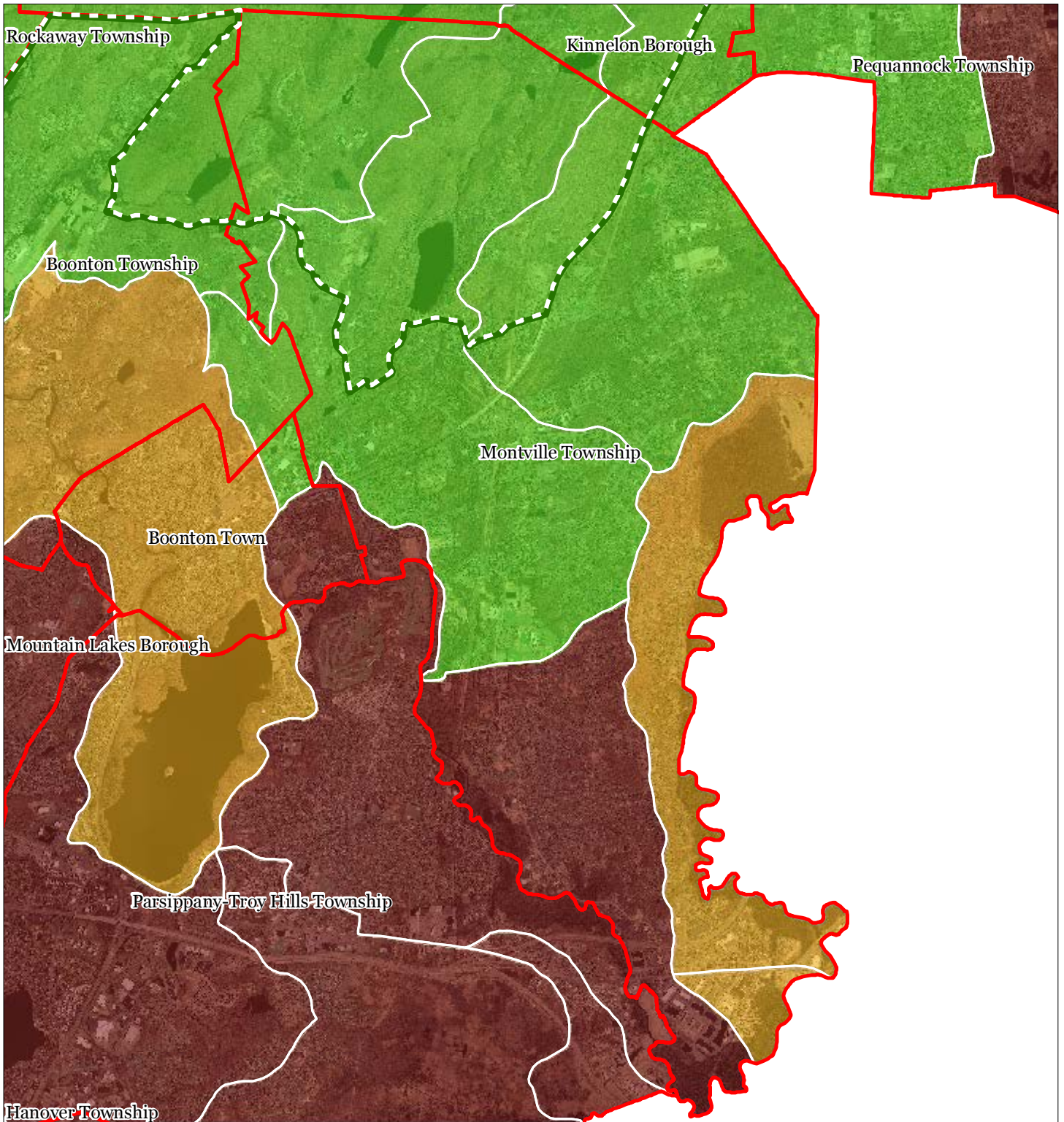


1 inch = 0.943 miles








September 2011

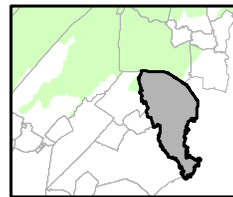
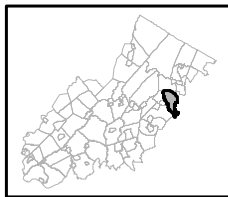
Figure 6: Forest Subwatersheds



Forest Integrity by HUC14 Subwatershed

-  *Low*
-  *Moderate*
-  *High*
-  Preservation Area
-  Municipal Boundaries

Montville Township

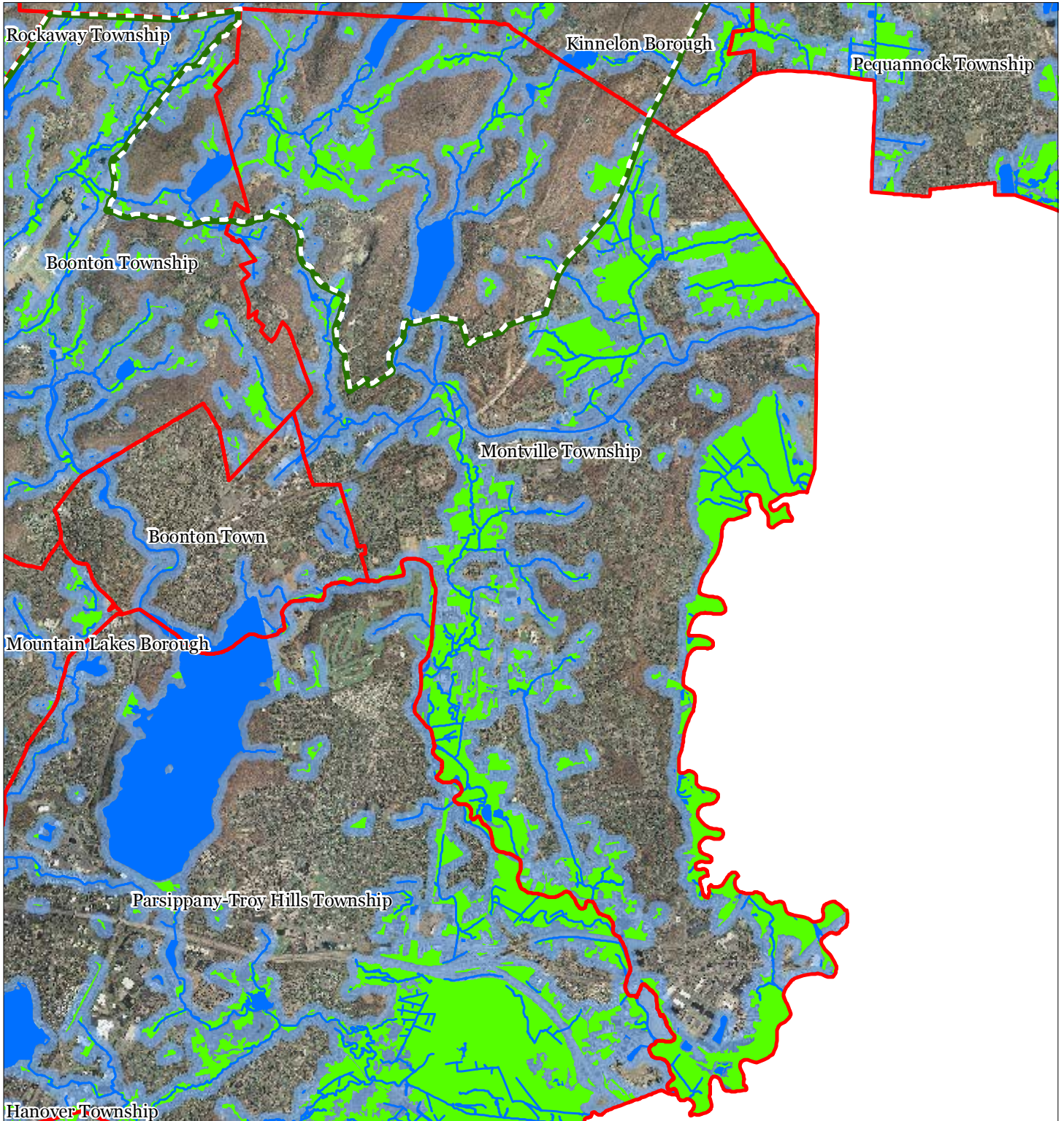


1 inch = 0.943 miles



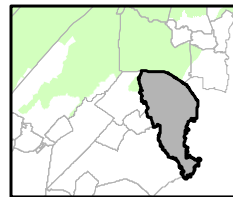
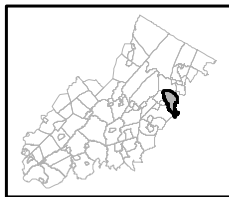
September 2011

Figure 7: Highlands Open Waters



-  Highlands Open Water Buffers (300ft)
-  Streams
-  Wetlands
-  Lakes & Ponds
-  Preservation Area
-  Municipal Boundaries

Montville Township

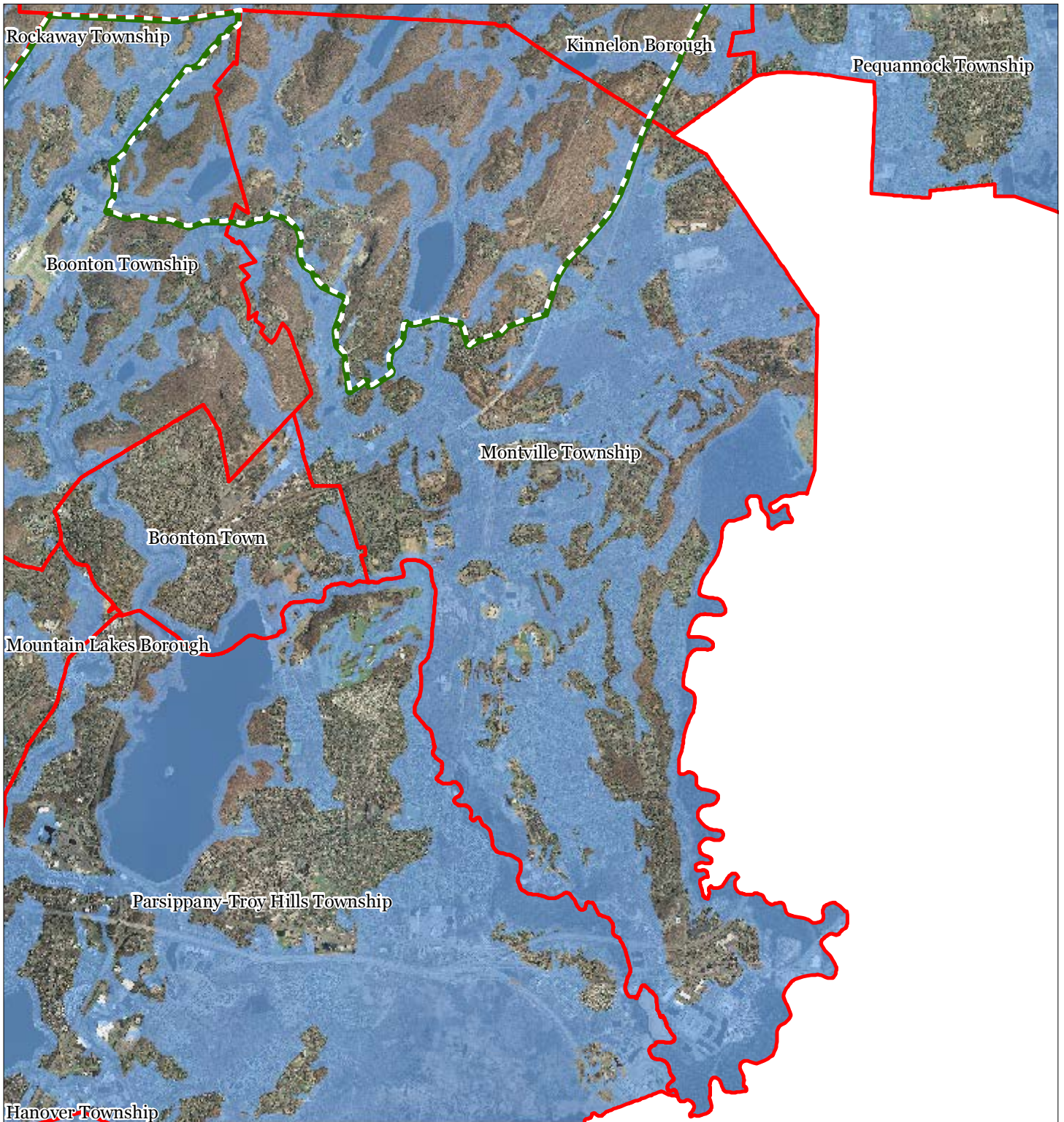


1 inch = 0.943 miles



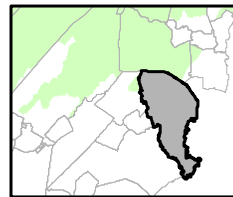
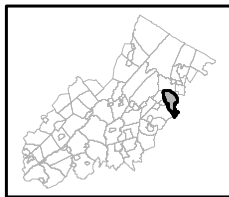
September 2011

Figure 8: Highlands Riparian Areas



- Riparian Area
- Preservation Area
- Municipal Boundaries

Montville Township

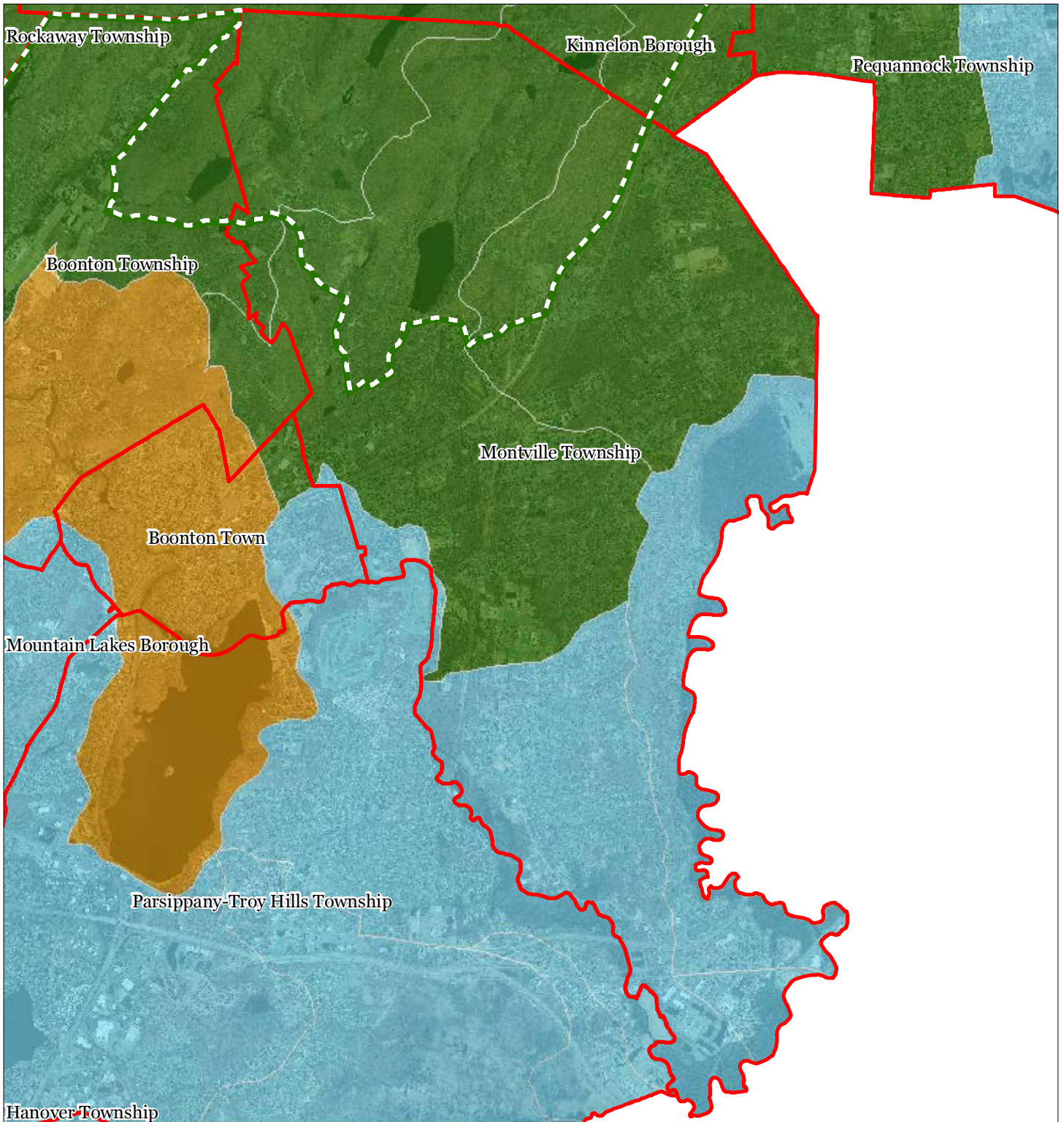


1 inch = 0.943 miles

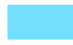





September 2011

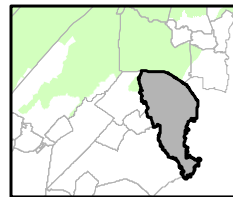
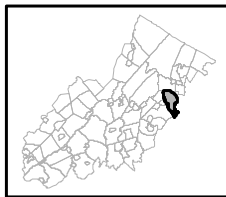
Figure 9: Watershed Values



Watershed Values by HUC14 Subwatershed

-  Low
-  Moderate
-  High
-  Preservation Area
-  Municipal Boundaries

Montville Township

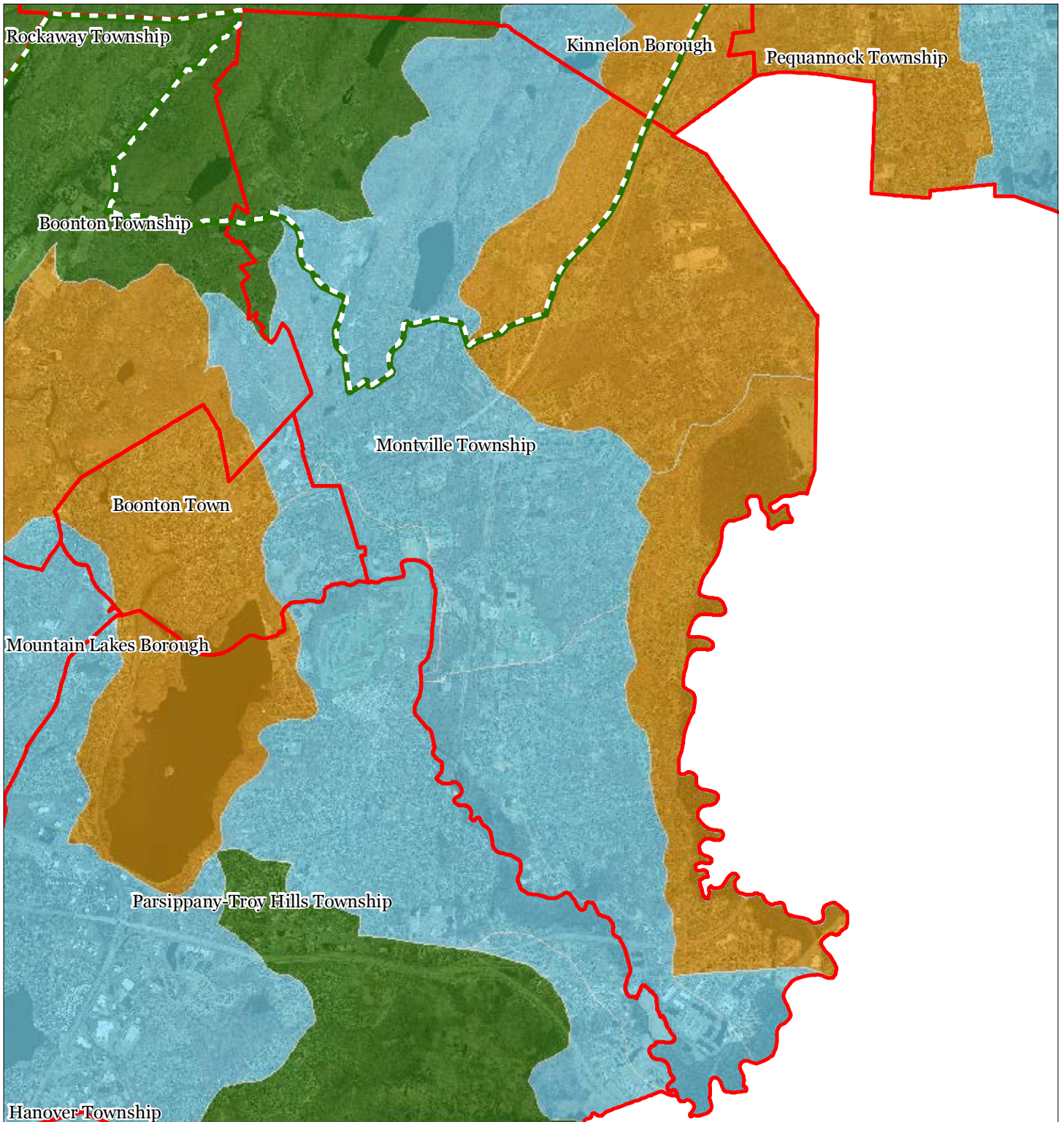


1 inch = 0.943 miles








September 2011

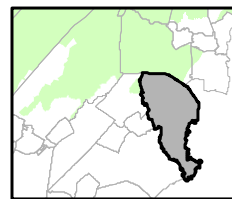
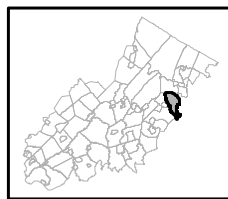
Figure 10: Riparian Integrity



Riparian Integrity by HUC14 Subwatershed

-  Low
-  Moderate
-  High
-  Preservation Area
-  Municipal Boundaries

Montville Township

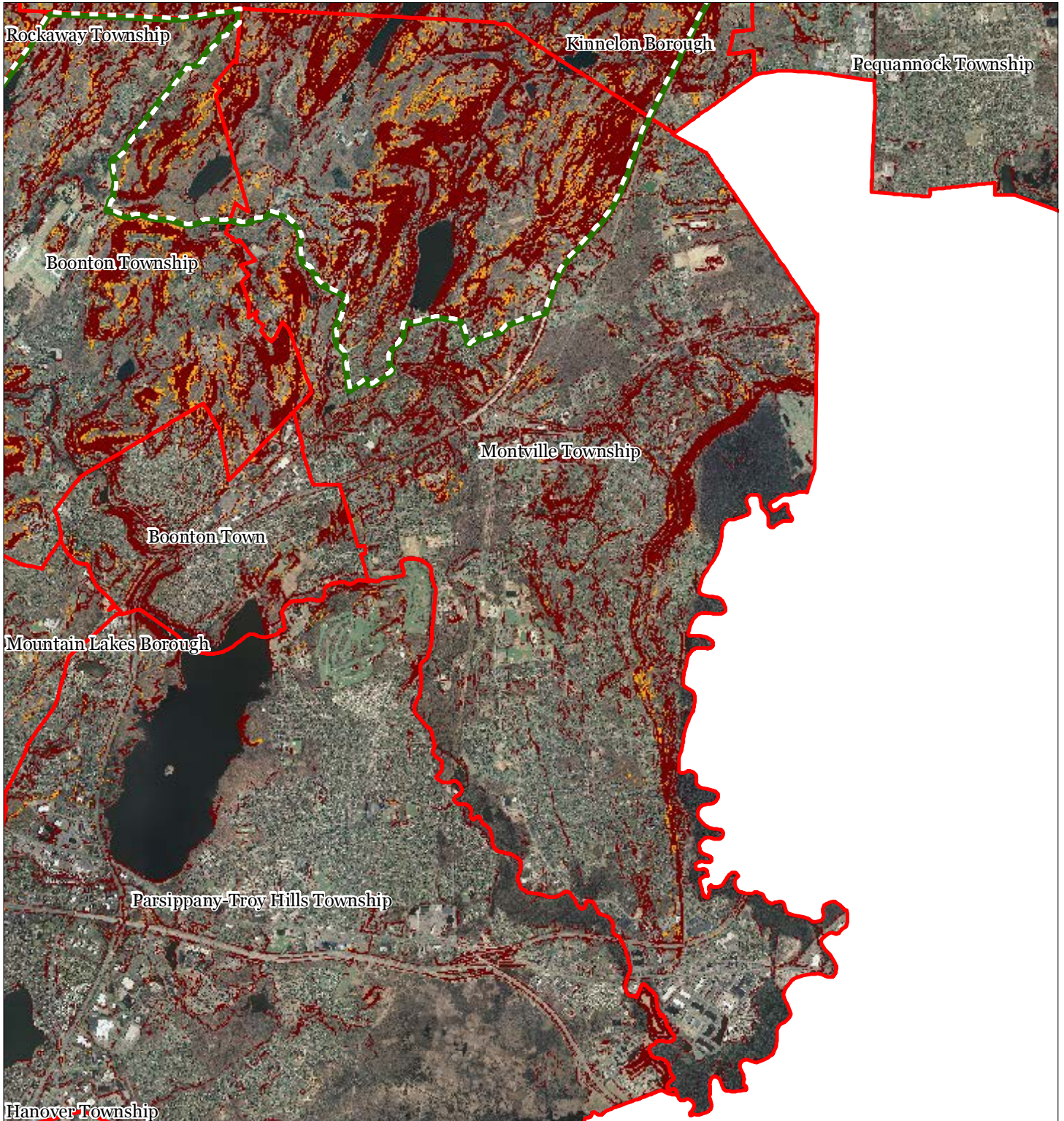


1 inch = 0.943 miles







September 2011

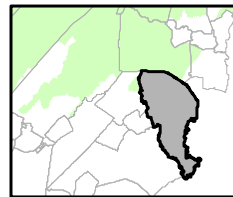
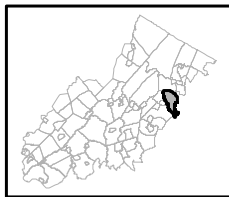
Figure 11: Steep Slope Protection Areas



Steep Slopes

-  Moderate
-  Severe
-  Preservation Area
-  Municipal Boundaries

Montville Township






1 inch = 0.943 miles



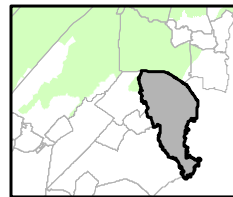
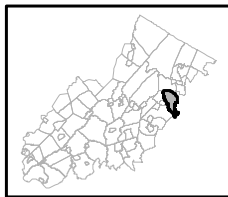
September 2011

Figure 12: Critical Wildlife Habitat



-  Critical Wildlife Habitat
-  Preservation Area
-  Municipal Boundaries

Montville Township

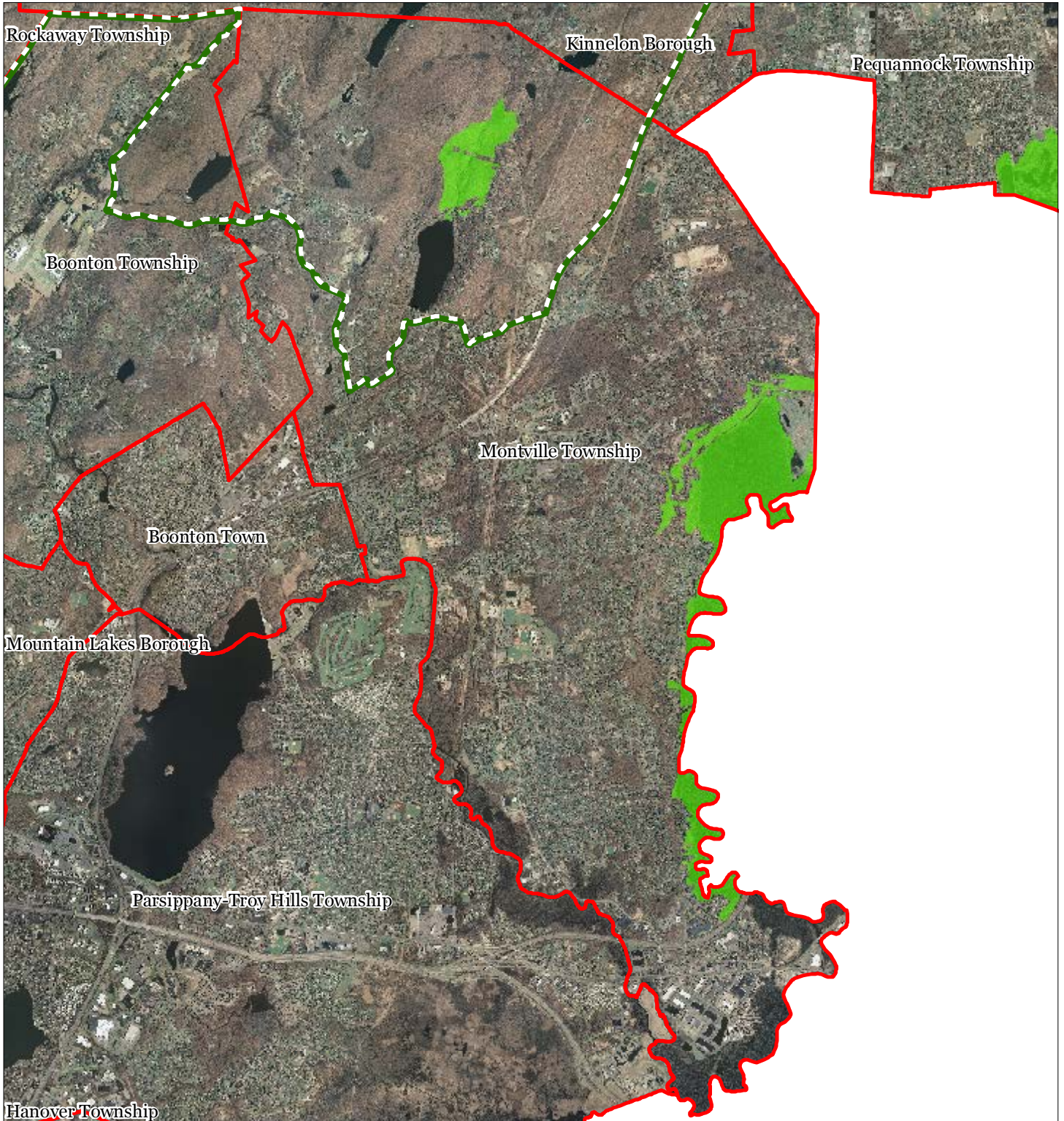





1 inch = 0.943 miles



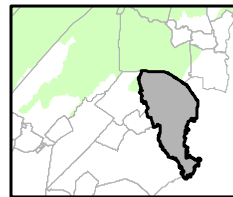
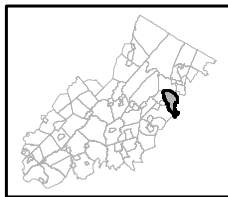
September 2011

Figure 13: Significant Natural Areas



-  Significant Natural Areas
-  Preservation Area
-  Municipal Boundaries

Montville Township

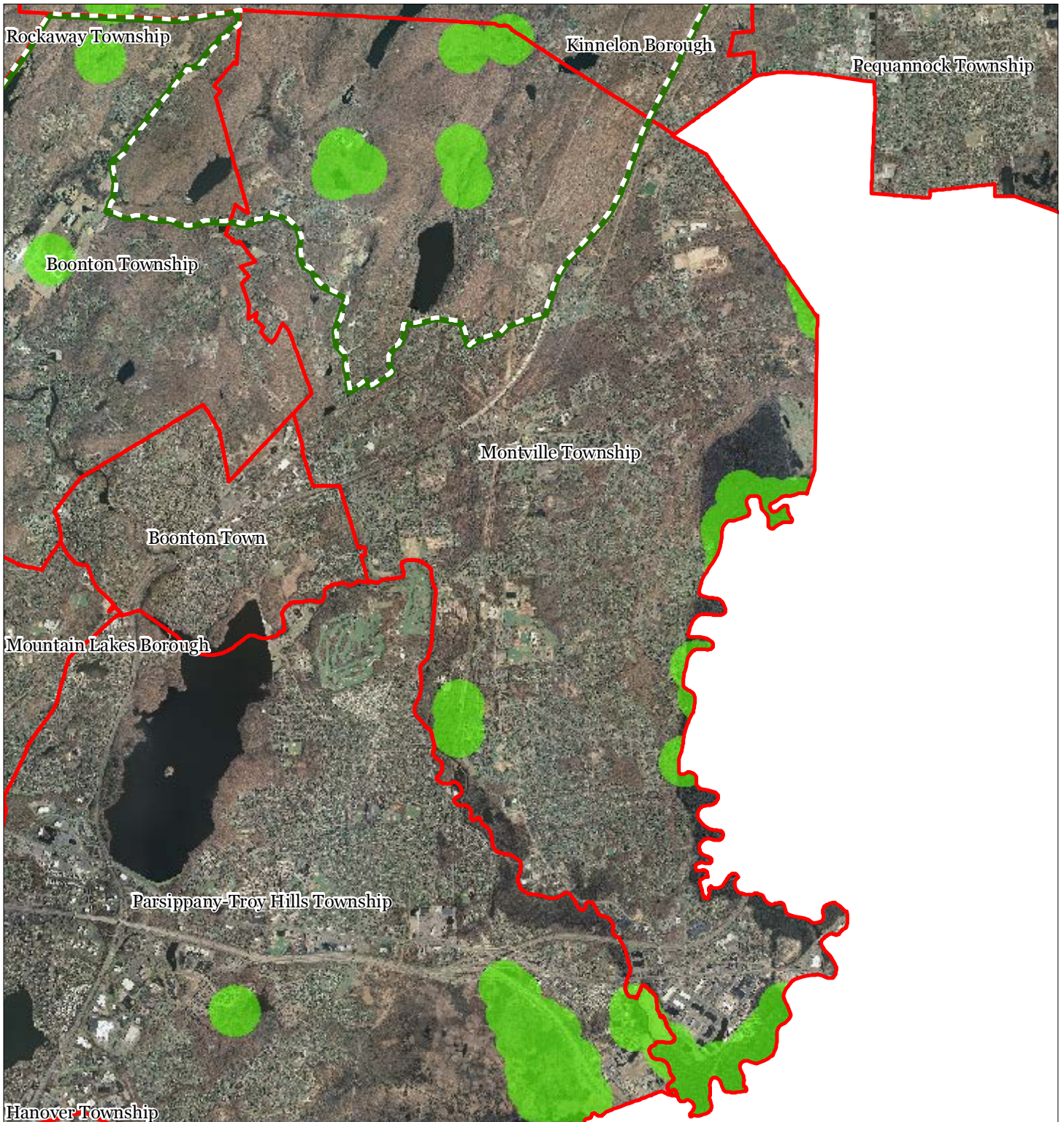





1 inch = 0.943 miles



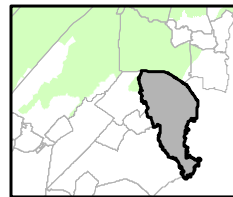
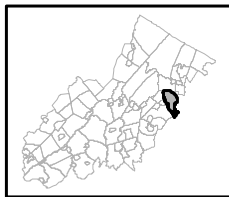
September 2011

Figure 14: Vernal Pools



-  Vernal Pools + 1000ft Buffer
-  Preservation Area
-  Municipal Boundaries

Montville Township

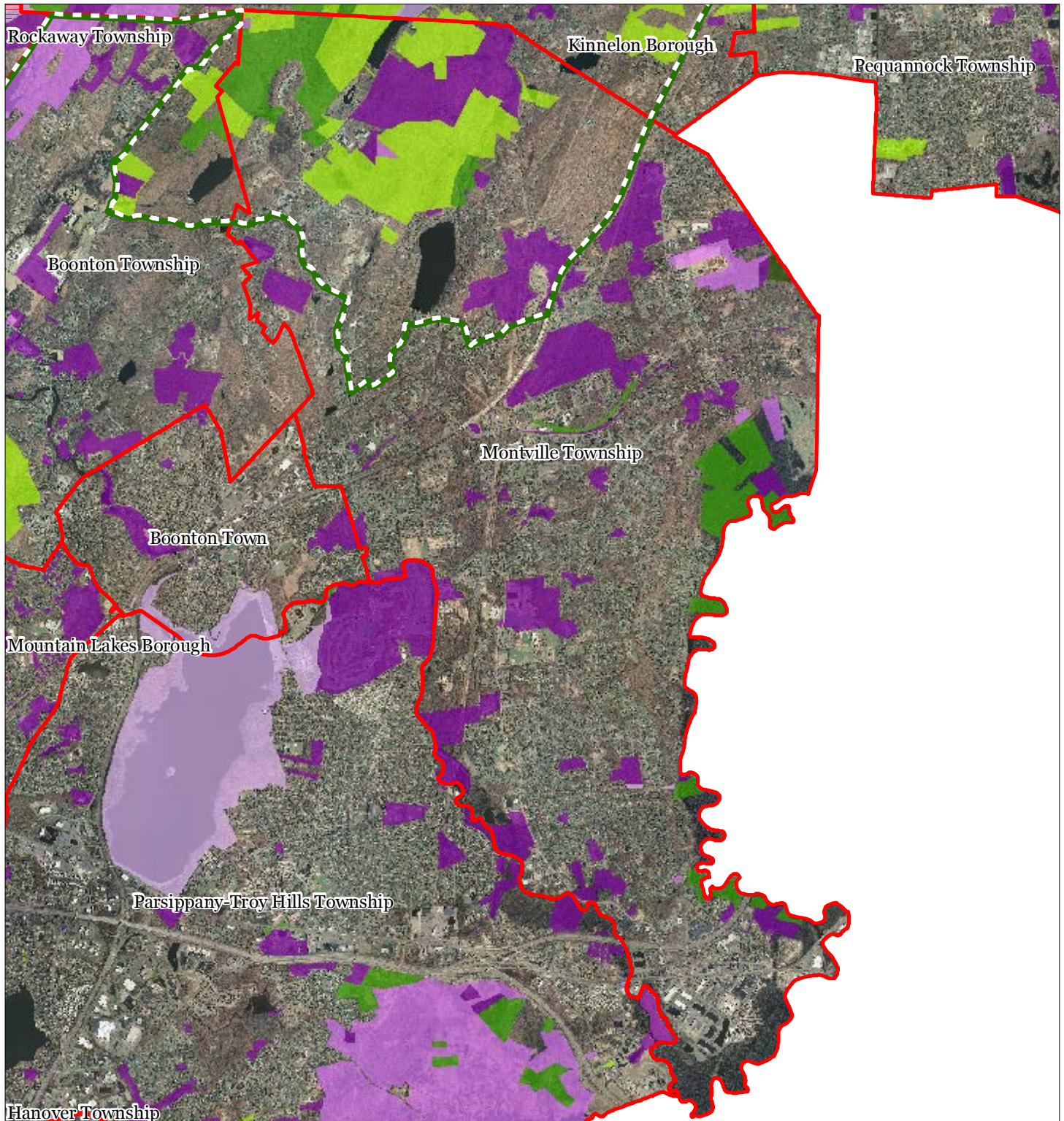


1 inch = 0.943 miles



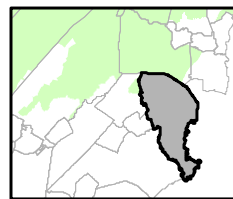
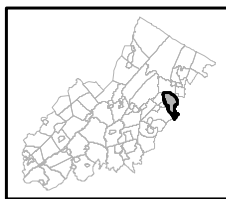
September 2011

Figure 15: Preserved Lands



- | | |
|---|-------------------------------|
| Preserved Lands | Conservation Easements |
| Federal Open Space | Green Acres |
| State Open Space | SADC Easements |
| County Open Space | SADC Final |
| Municipal Open Space | SADC Preserved |
| Non-Profit/Private Open Space | Municipal Boundaries |
| Water Supply Watershed Lands | Preservation Area |
| Preserved Farmland | |
| Highlands Transfer of Development Lands | |

Montville Township

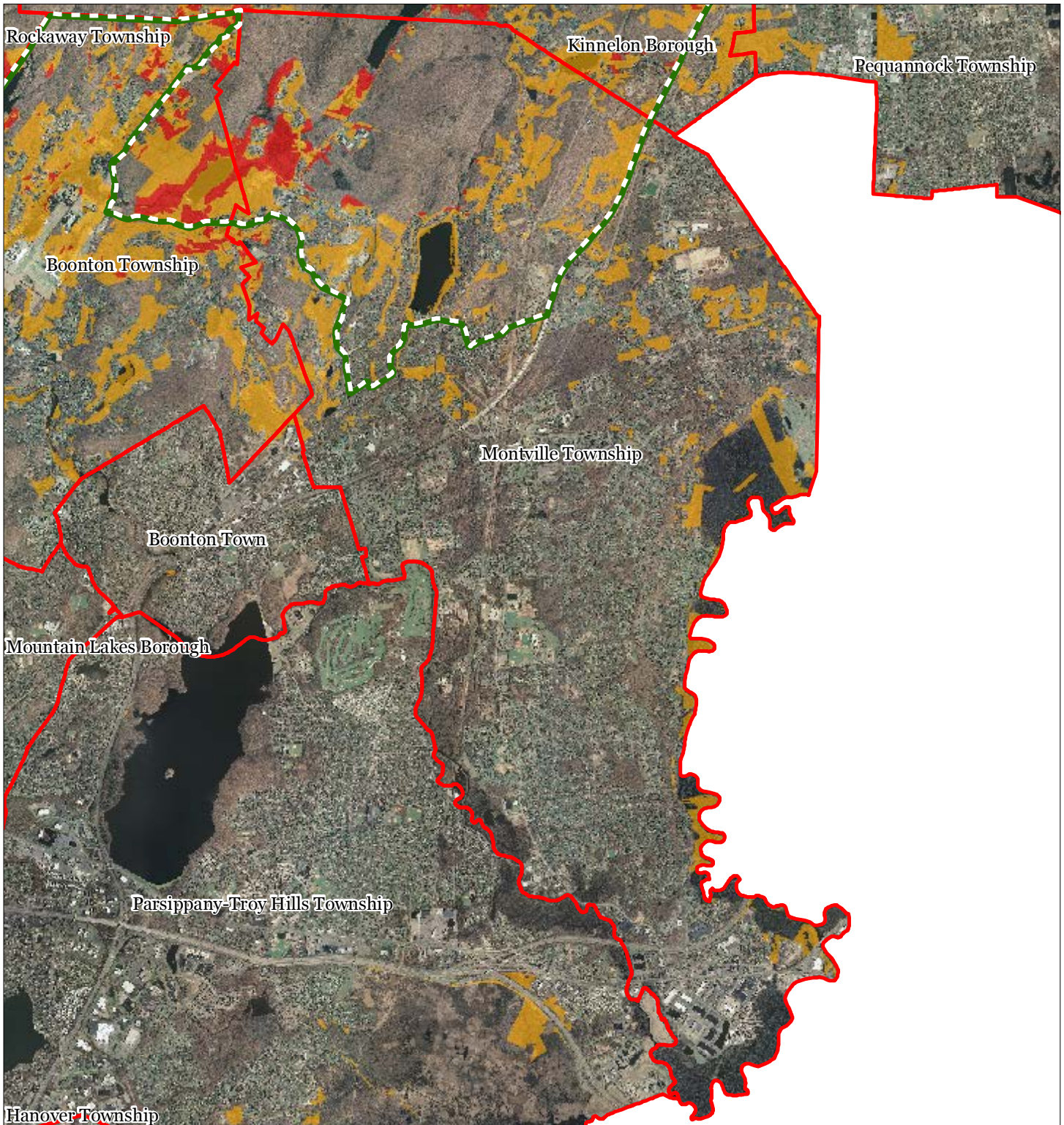


1 inch = 0.943 miles







September 2011

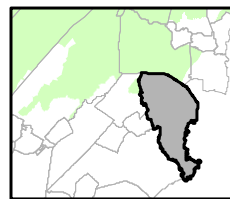
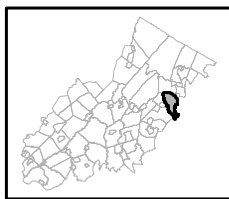
Figure 16: Highlands Conservation Priority Areas



Conservation Priority Area

-  Moderate
-  High
-  Preservation Area
-  Municipal Boundaries

Montville Township

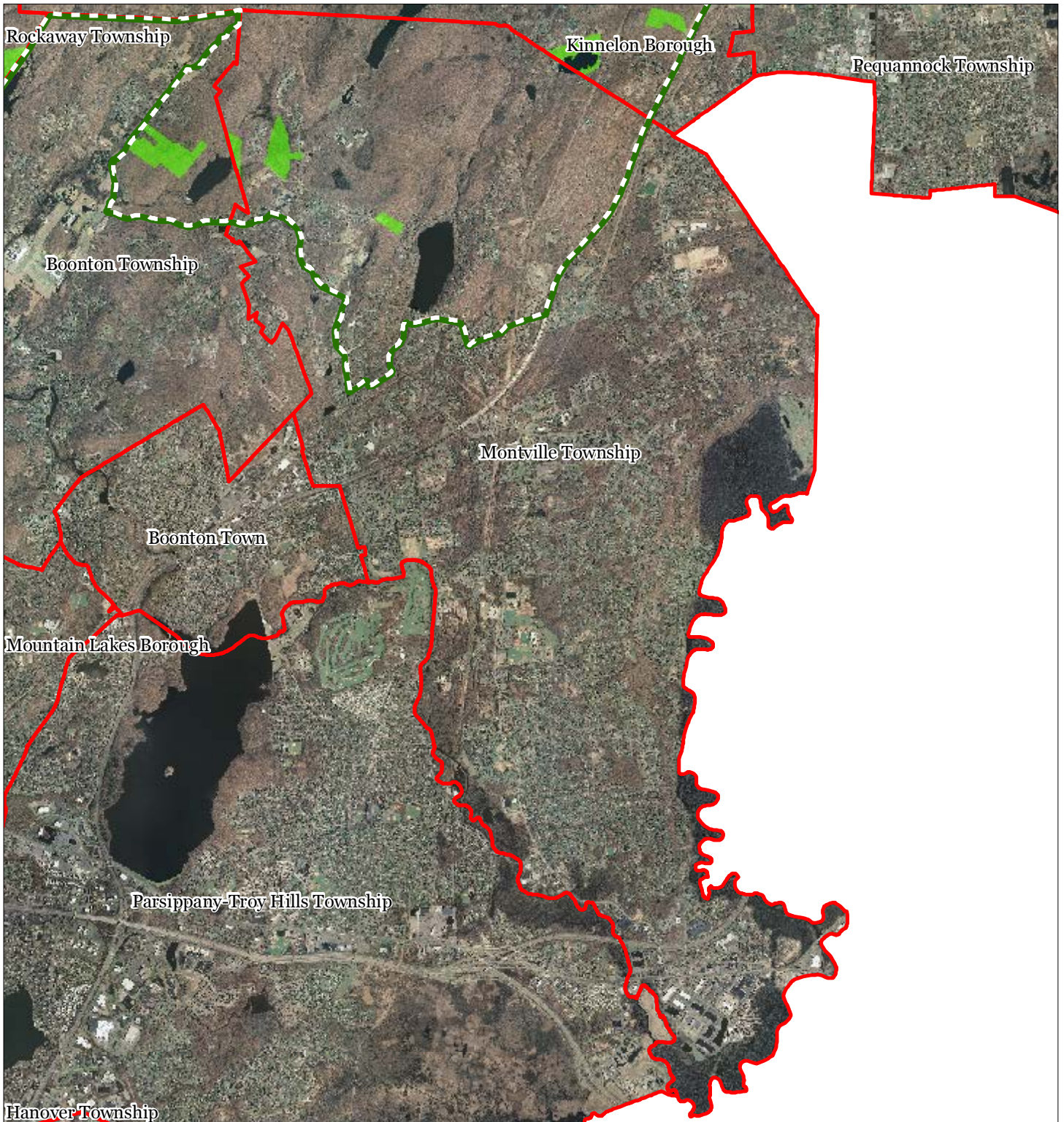





1 inch = 0.943 miles



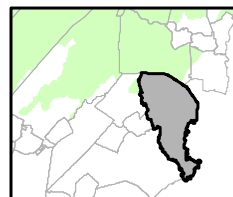
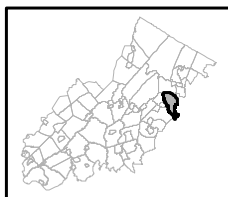
September 2011

Figure 17: Highlands Special Environmental Zone



-  Special Environmental Zone
-  Preservation Area
-  Municipal Boundaries

Montville Township

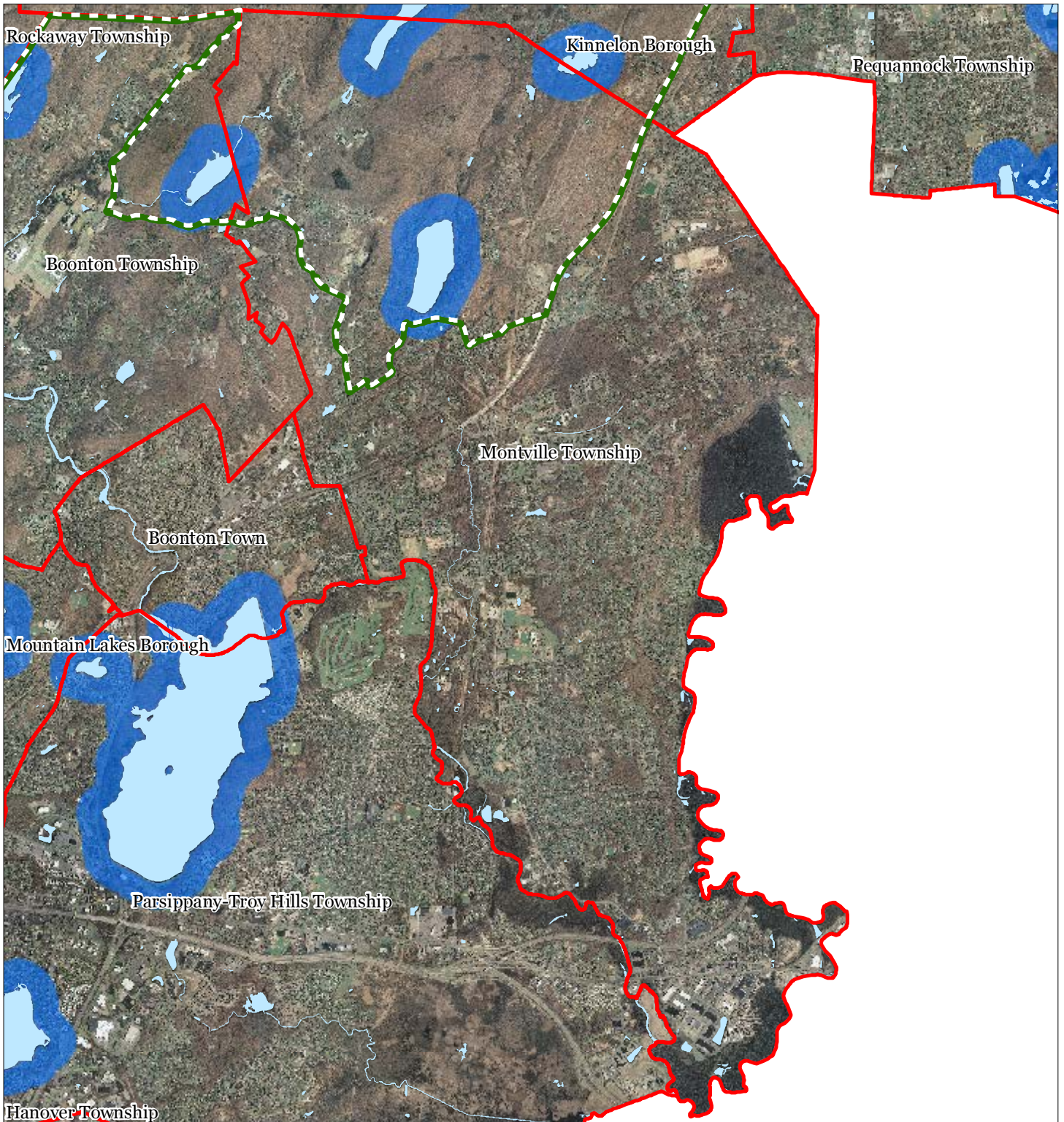


1 inch = 0.943 miles



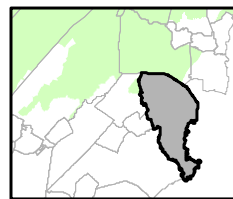
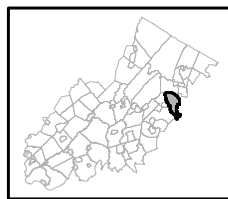
September 2011

Figure 19: Lake Management Area



- Lakes & Ponds
- Lake Management Area
- Preservation Area
- Municipal Boundaries

Montville Township

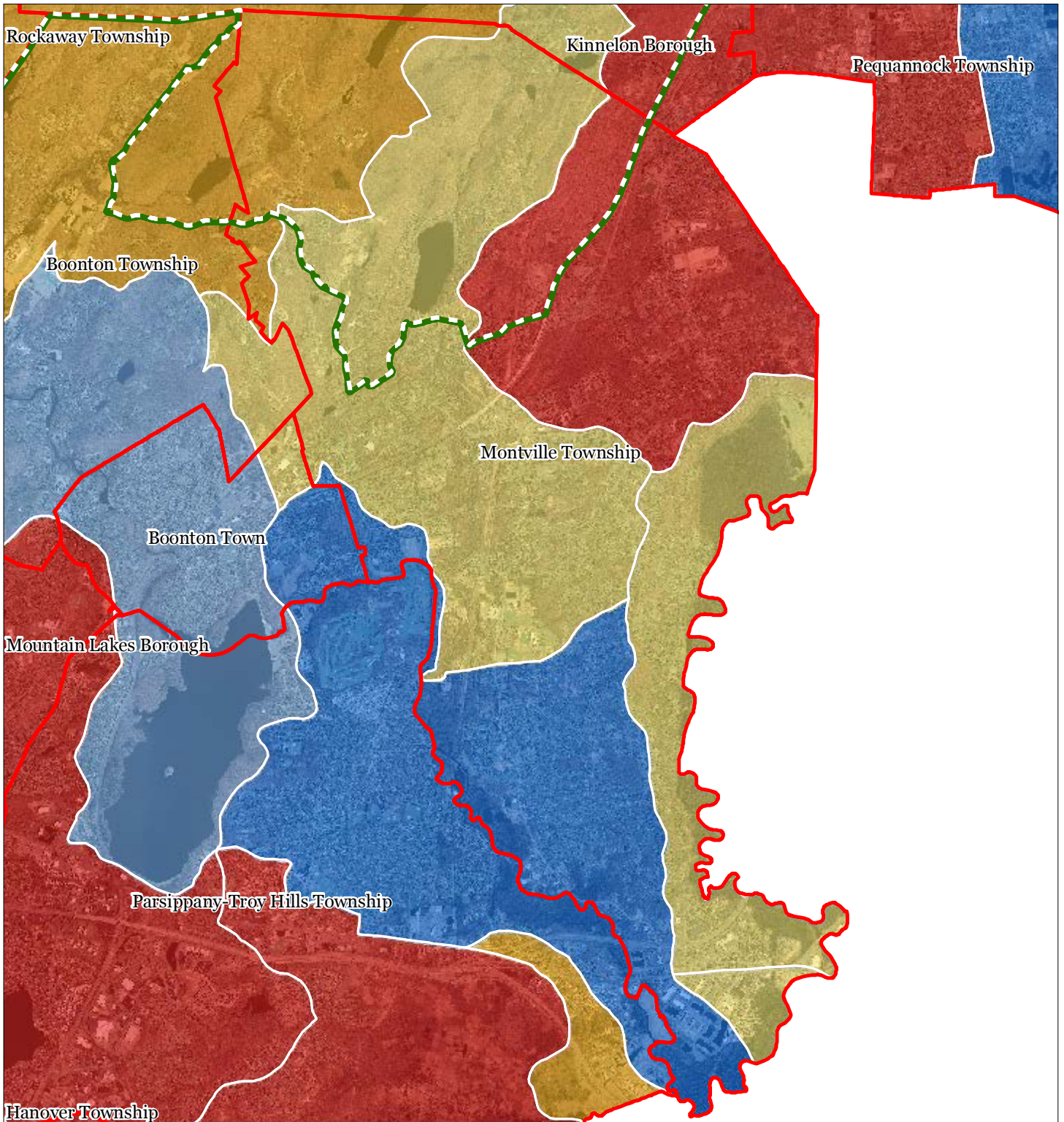


1 inch = 0.943 miles



September 2011

Figure 20: Net Water Availability

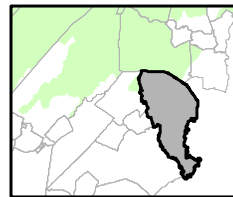
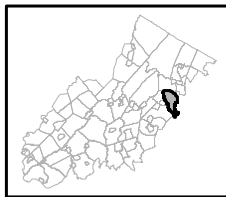


Net Water Availability By HUC14
 Million Gallons Per Day (MGD)

- 0.10 - 0.39
- 0.05 - 0.09
- 0.00 - 0.04
- 0.09 - 0.00
- 0.99 - -0.10
- 7.10 - -1.00

- Preservation Area
- Municipal Boundaries

Montville Township

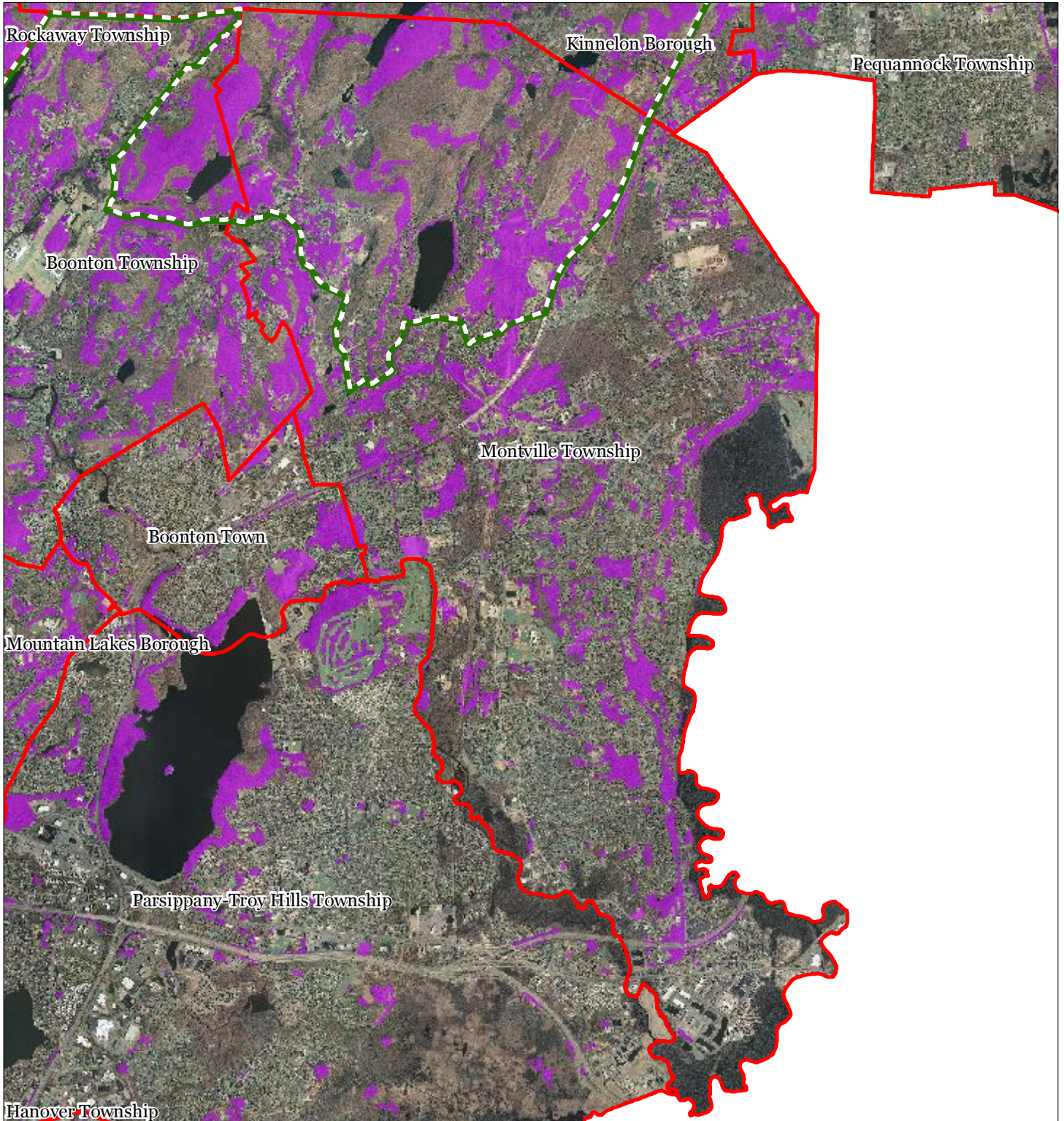





1 inch = 0.943 miles



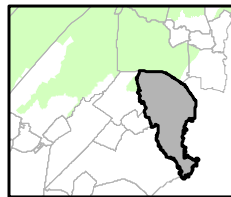
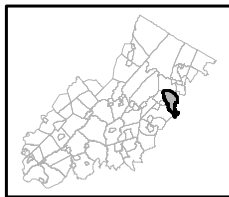
September 2011

Figure 21: Prime Ground Water Recharge Areas



-  Prime Groundwater Recharge Areas
-  Preservation Area
-  Municipal Boundaries

Montville Township

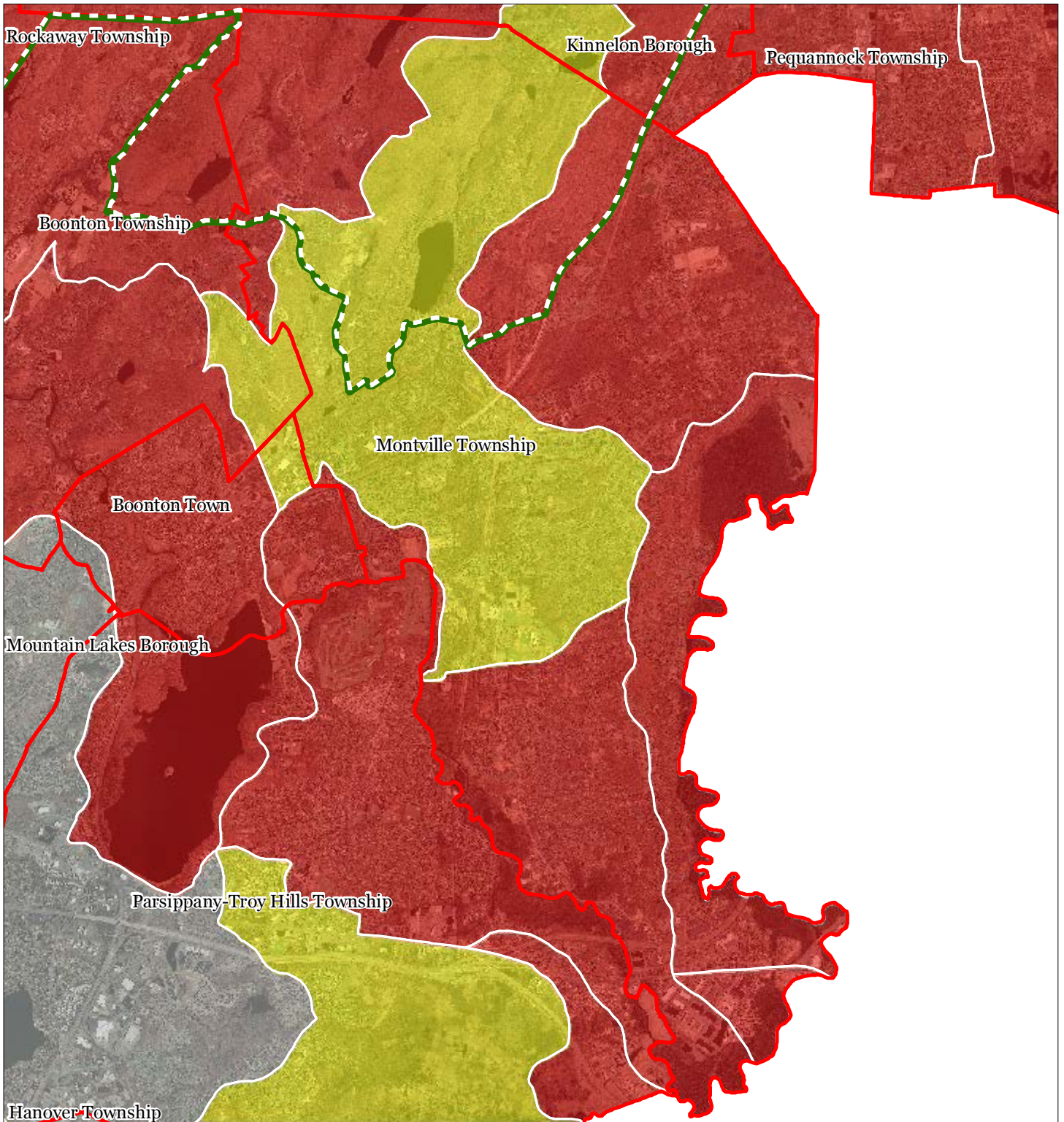


1 inch = 0.943 miles



September 2011

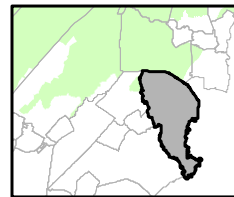
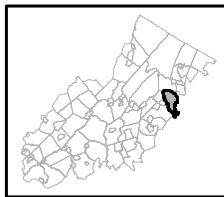
Figure 22: HUC 14s on NJDEP Impaired Waters List



Impaired Waters Overall Assessment by HUC14 Subwatershed

- Non Impacted
- Insufficient Data Available
- Moderate
- Water Quality Impaired
- Preservation Area
- Municipal Boundaries

Montville Township

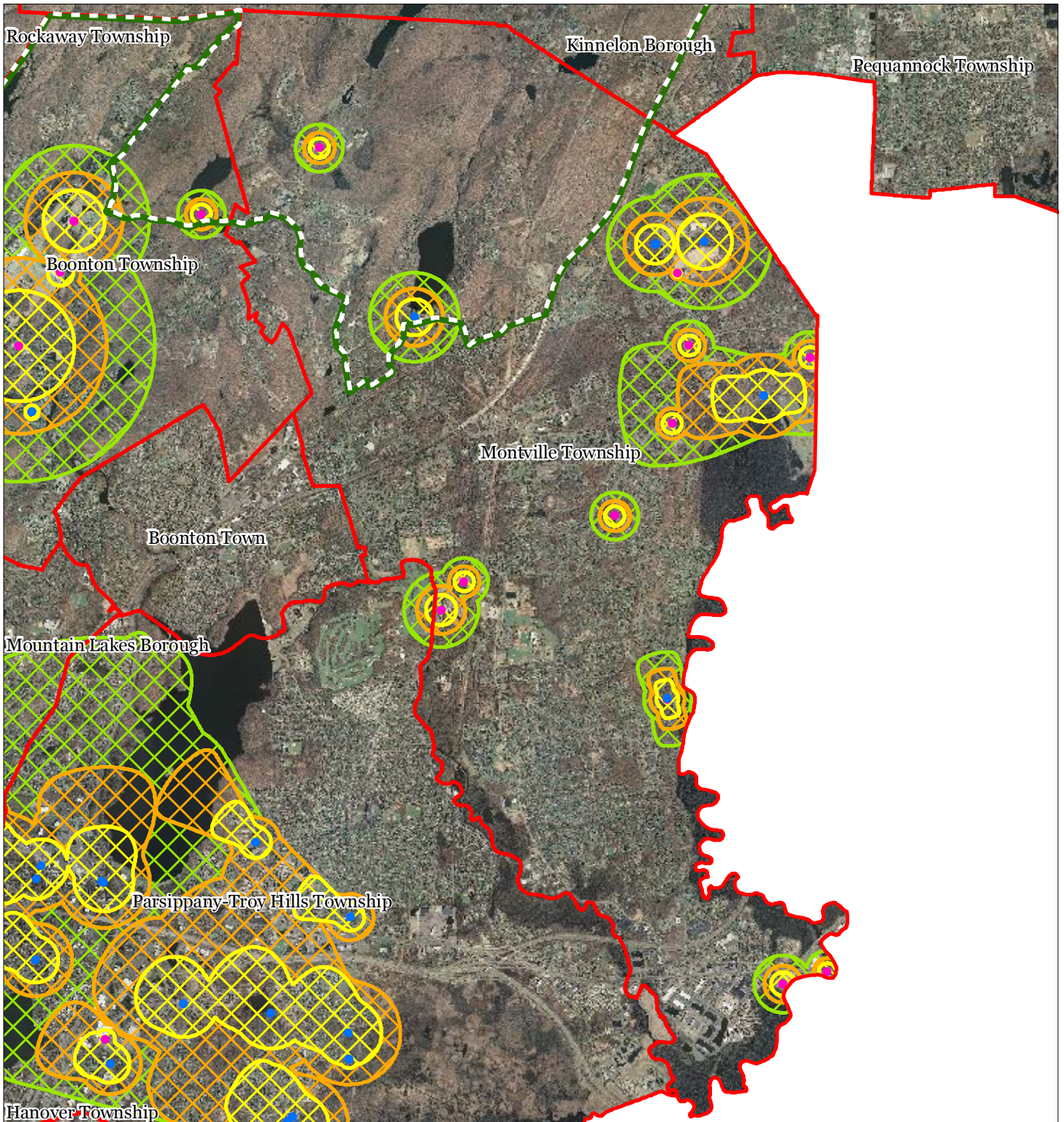


1 inch = 0.943 miles



September 2011

Figure 23: Wellhead Protection Areas



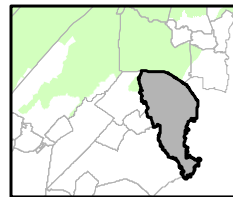
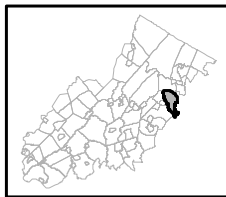
- Public Community Wells
- Public Non-Community Wells

Wellhead Protection Areas

- 2-Year Tier
- 5-Year Tier
- 12-Year Tier

- Preservation Area
- Municipal Boundaries

Montville Township

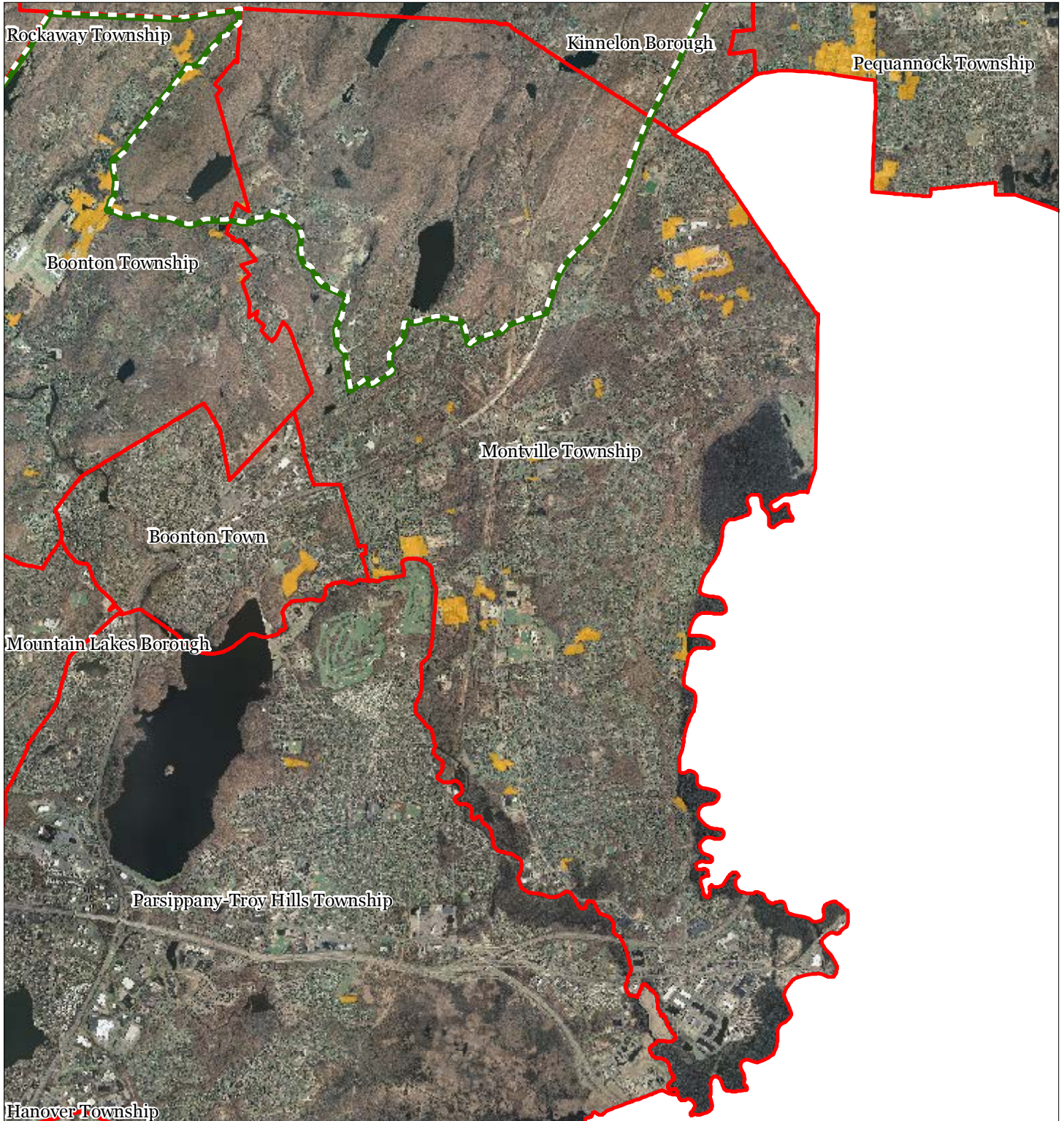


1 inch = 0.943 miles



September 2011

Figure 26: Preserved Farms, SADC Easements, All Agricultural Uses



SADC Easements



SADC Final



Preservation Area



SADC Preserved



Municipal Boundaries

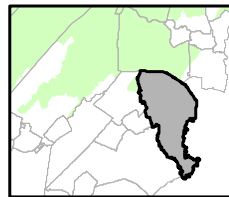
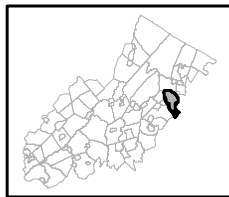


Preserved Farmland



Agriculture Uses

Montville Township

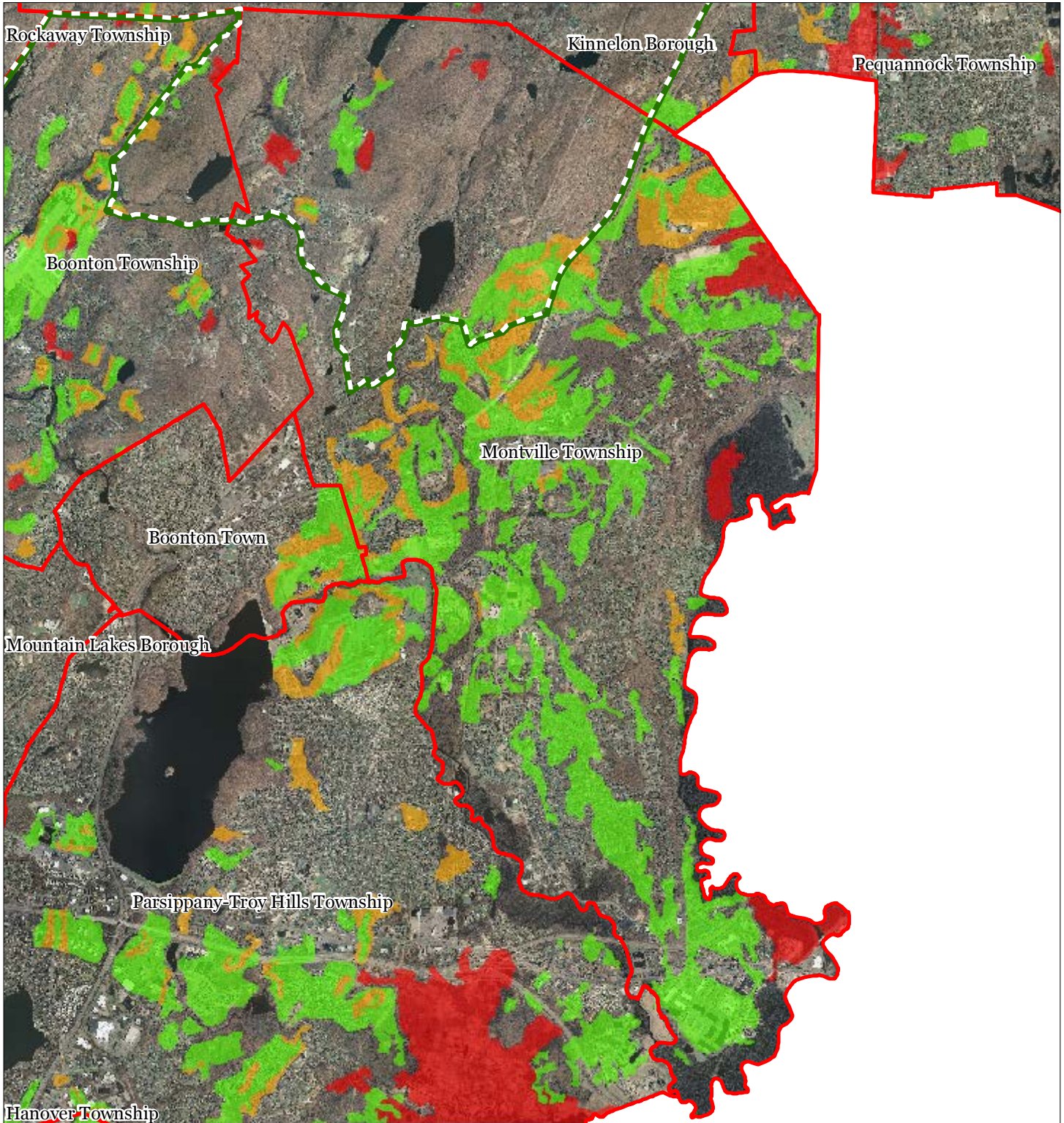


1 inch = 0.943 miles



September 2011

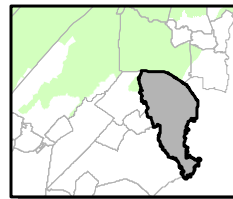
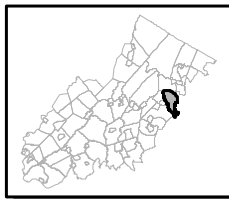
Figure 27: Important Farmland Soils



Important Farmland Soils

-  Prime Farmland
-  Farmland of Local Importance
-  Farmland of Statewide Importance
-  Farmland of Unique Importance
-  Preservation Area
-  Municipal Boundaries

Montville Township

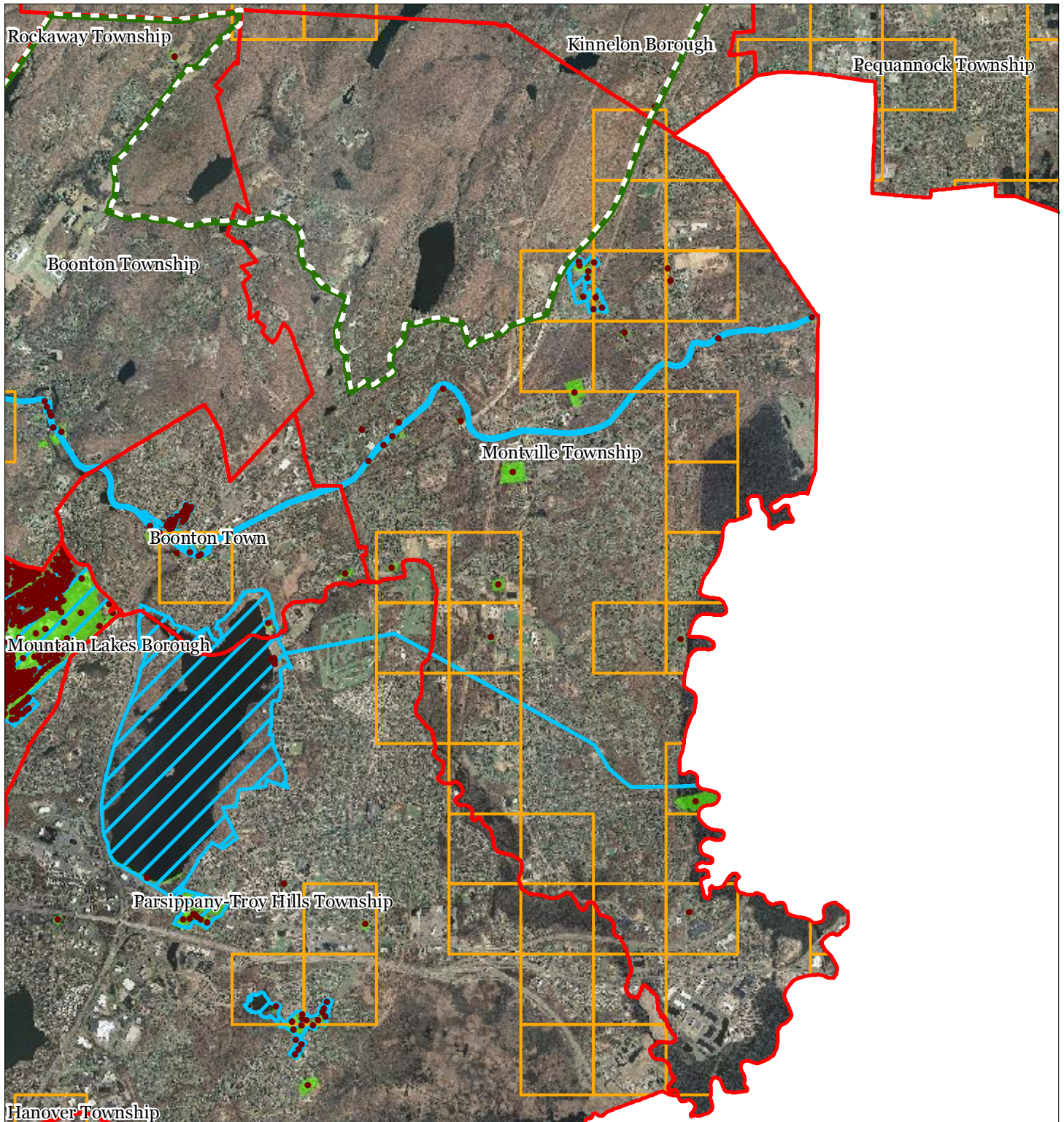



1 inch = 0.943 miles



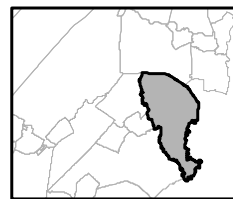
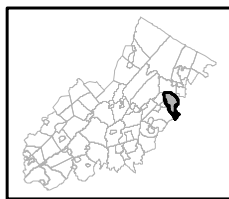
September 2011

Figure 28: Historic, Cultural, and Archaeological Resources Inventory



-  Preservation Area
-  Municipal Boundaries
-  Archaeological Grids (1 sqmi)
-  NJ Historic Districts
-  Historic Property Points
-  Historic Property Polygons

Montville Township

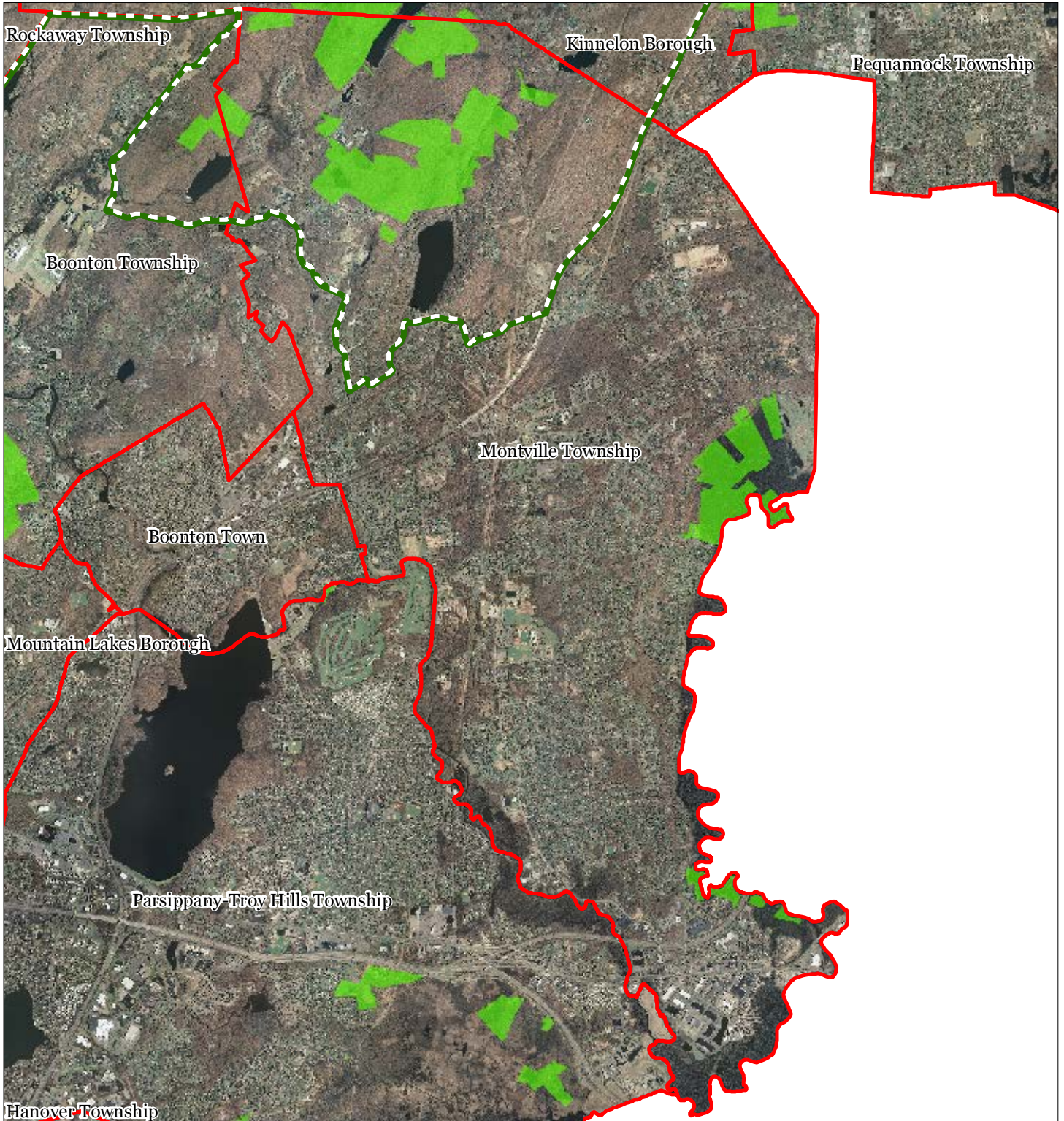


1 inch = 0.943 miles



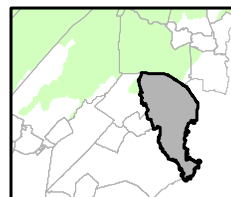
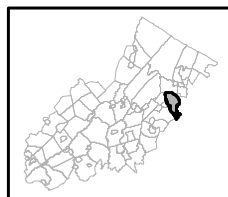
September 2011

Figure 29: Baseline Scenic Resources Inventory



- Scenic Resources
- Municipal Boundaries
- Preservation Area

Montville Township

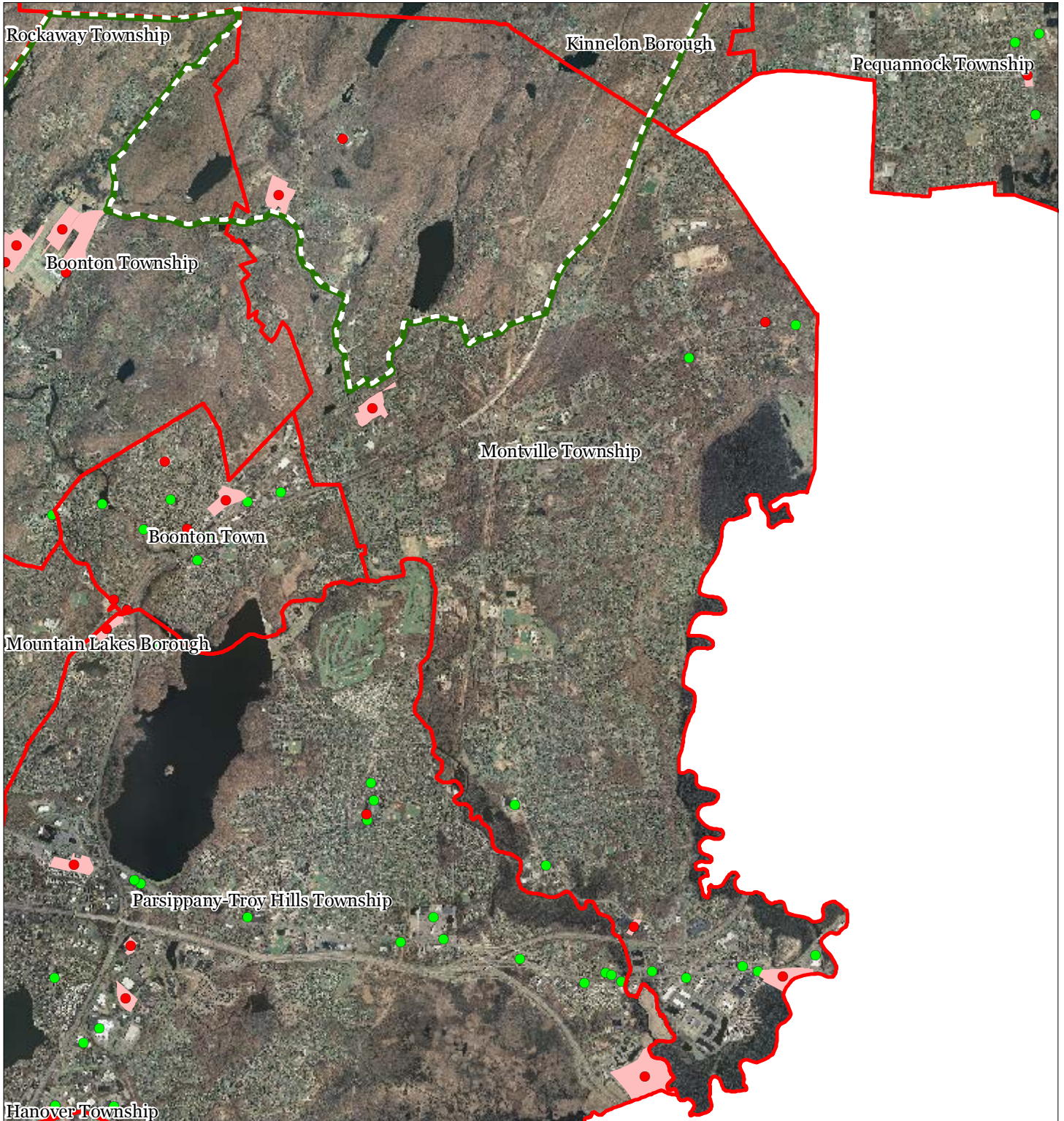


1 inch = 0.943 miles



September 2011

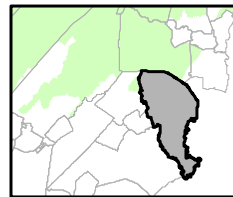
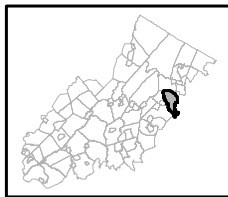
Figure 30: Highlands Contaminated Site Inventory



Highlands Contaminated Site Inventory

- Tier 1 Sites
- Tier 1 Sites (Polygons)
- Tier 2 Sites
- Preservation Area
- Municipal Boundaries

Montville Township

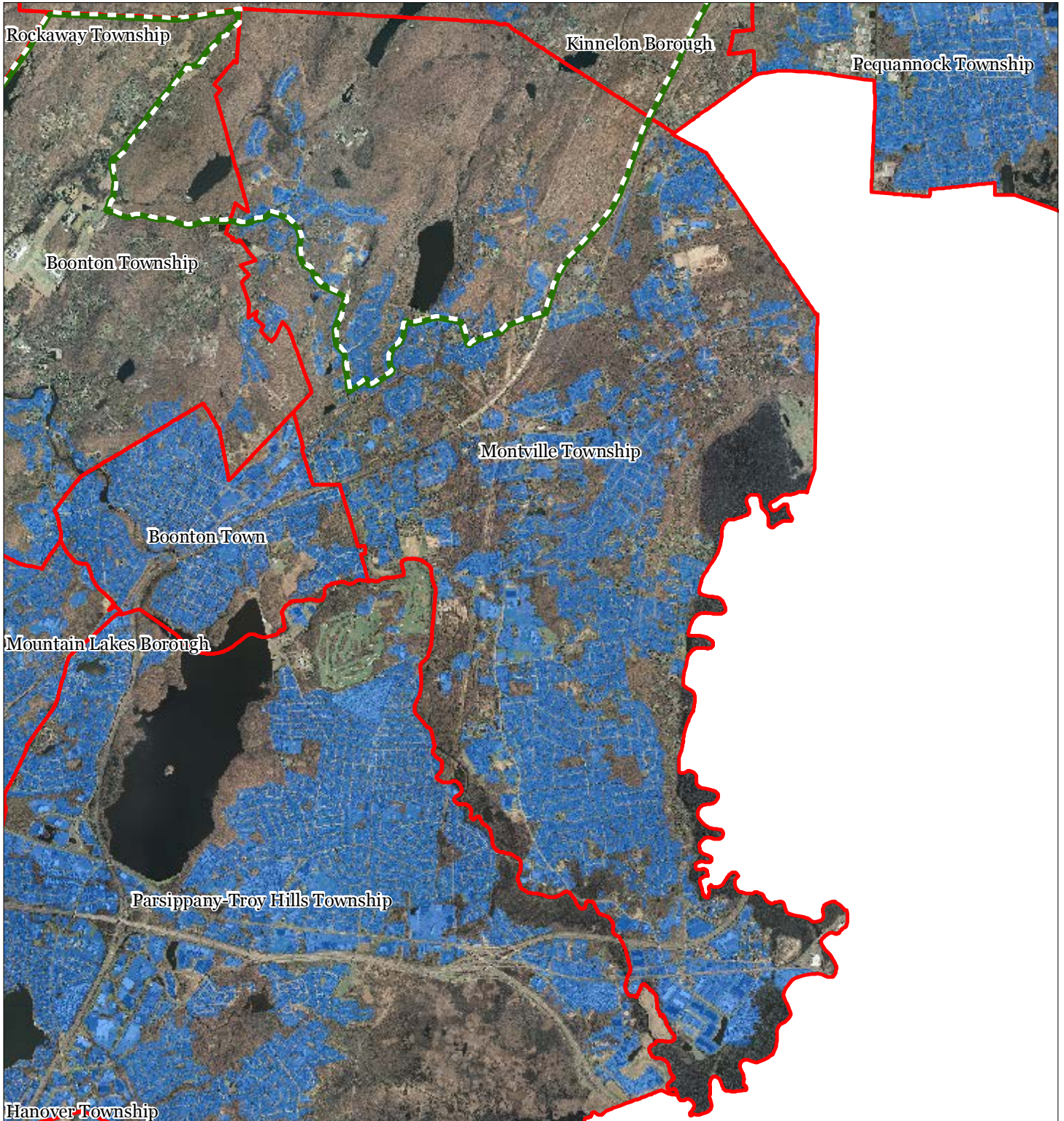





1 inch = 0.943 miles



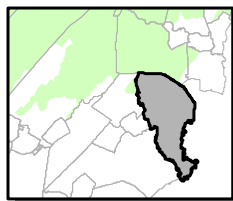
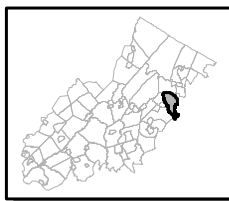
September 2011

Figure 31: Public Community Water Systems



-  Public Community Water Systems
-  Preservation Area
-  Municipal Boundaries

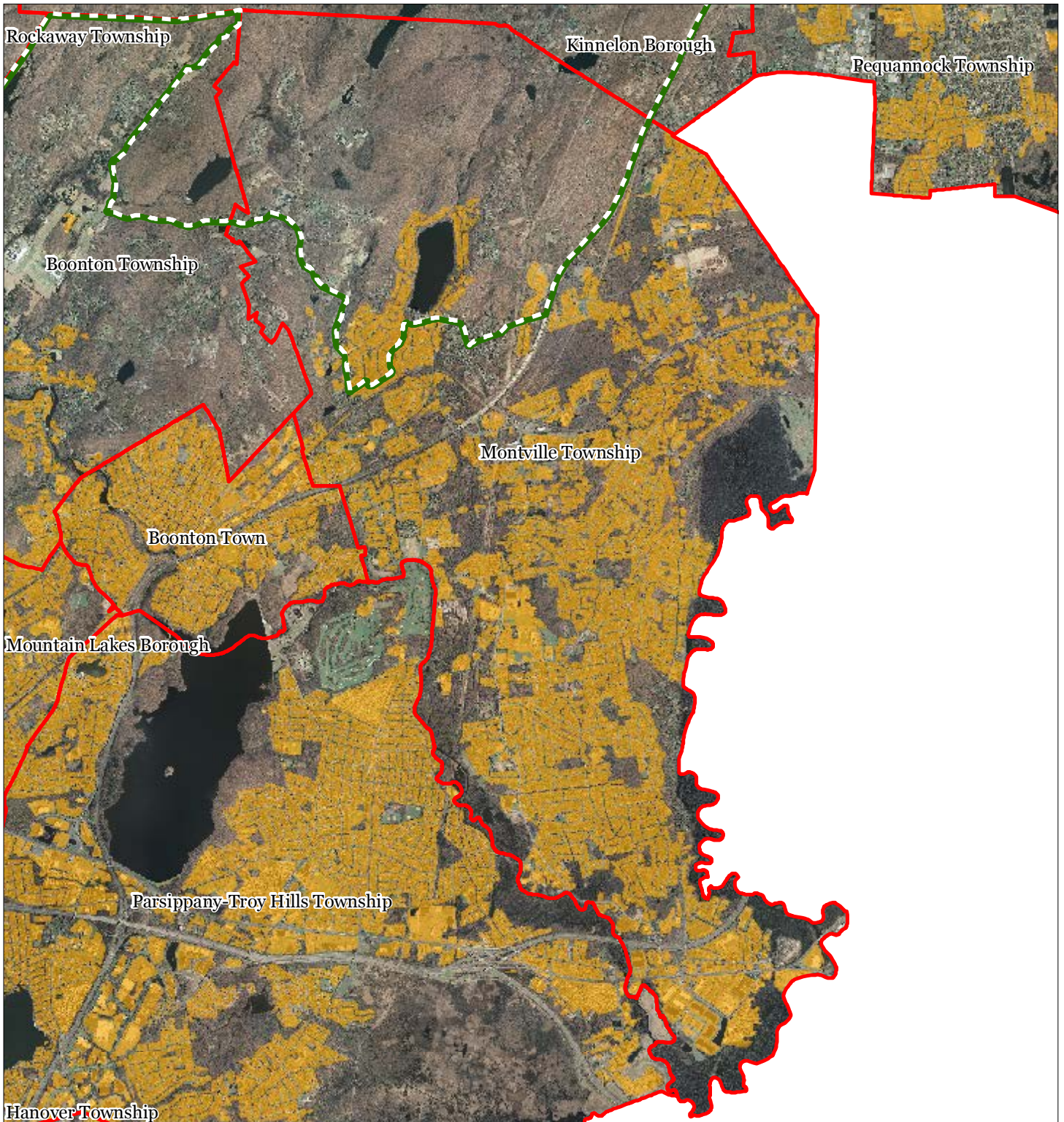
Montville Township






1 inch = 0.943 miles



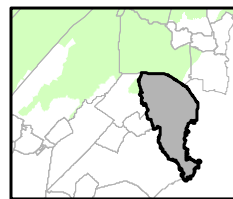
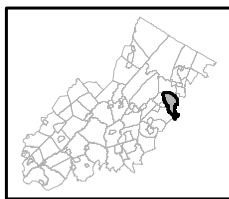
Figure 32: Highlands Domestic Sewerage Facilities



Highlands Domestic Sewerage Facilities

-  Existing Area Served
-  Preservation Area
-  Municipal Boundaries

Montville Township

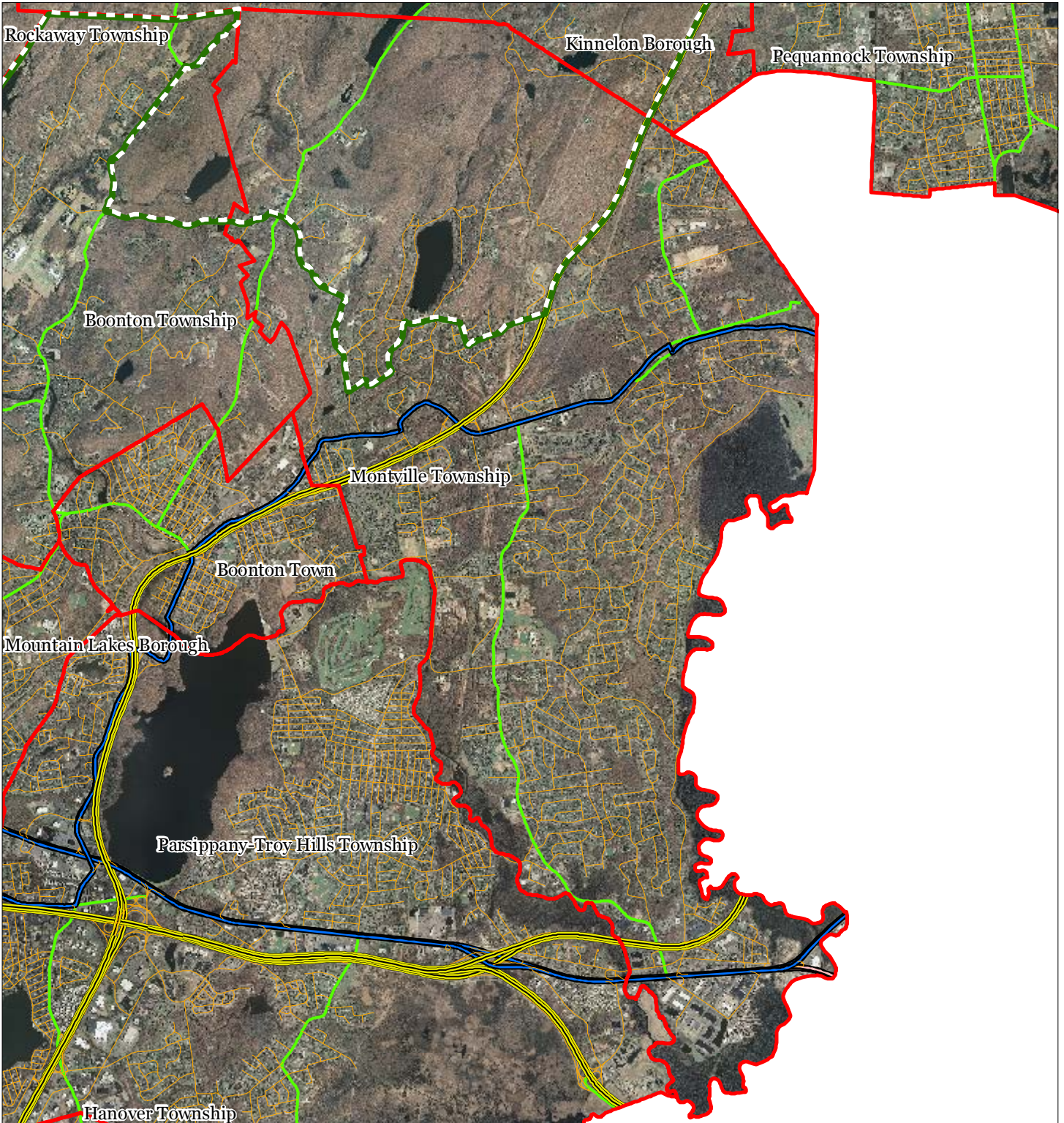


1 inch = 0.943 miles



September 2011

Figure 33: Highlands Roadway Network




Roadway Network

 Interstate Highways


 U.S. Routes

 State Routes

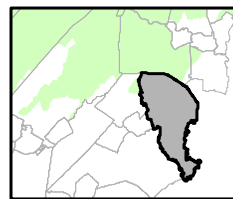
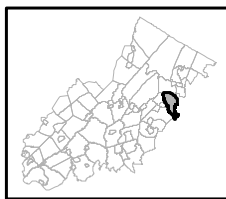
 County Routes

 Local Routes

 Preservation Area

 Municipal Boundaries

Montville Township

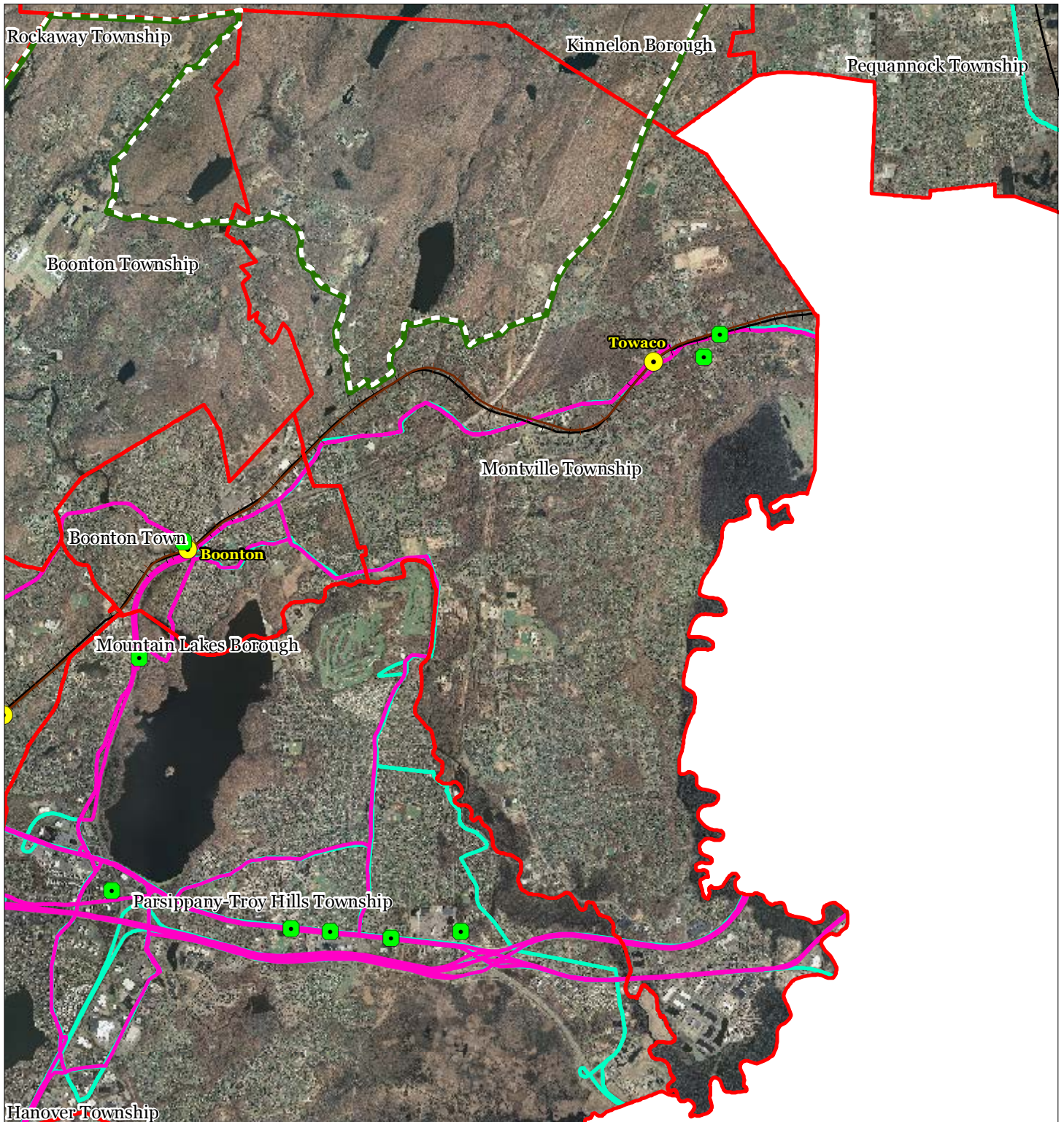


1 inch = 0.943 miles



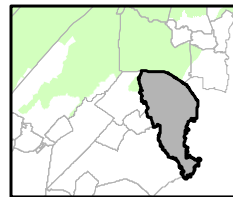
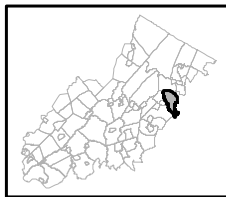
September 2011

Figure 34: Highlands Transit Network



- | | |
|--------------------------------|----------------------|
| Rail Network | Rail Stations |
| Boonton Line | Park and Ride Sites |
| Main Line & Bergen County Line | Private Bus Lines |
| Morris and Essex Line | NJ Transit Bus Lines |
| Raritan Valley Line | Airports |
| Freight Rail Lines | |
| Freight Rail Lines | |
| Abandoned Freight Rail | |

Montville Township



1 inch = 0.943 miles



September 2011