

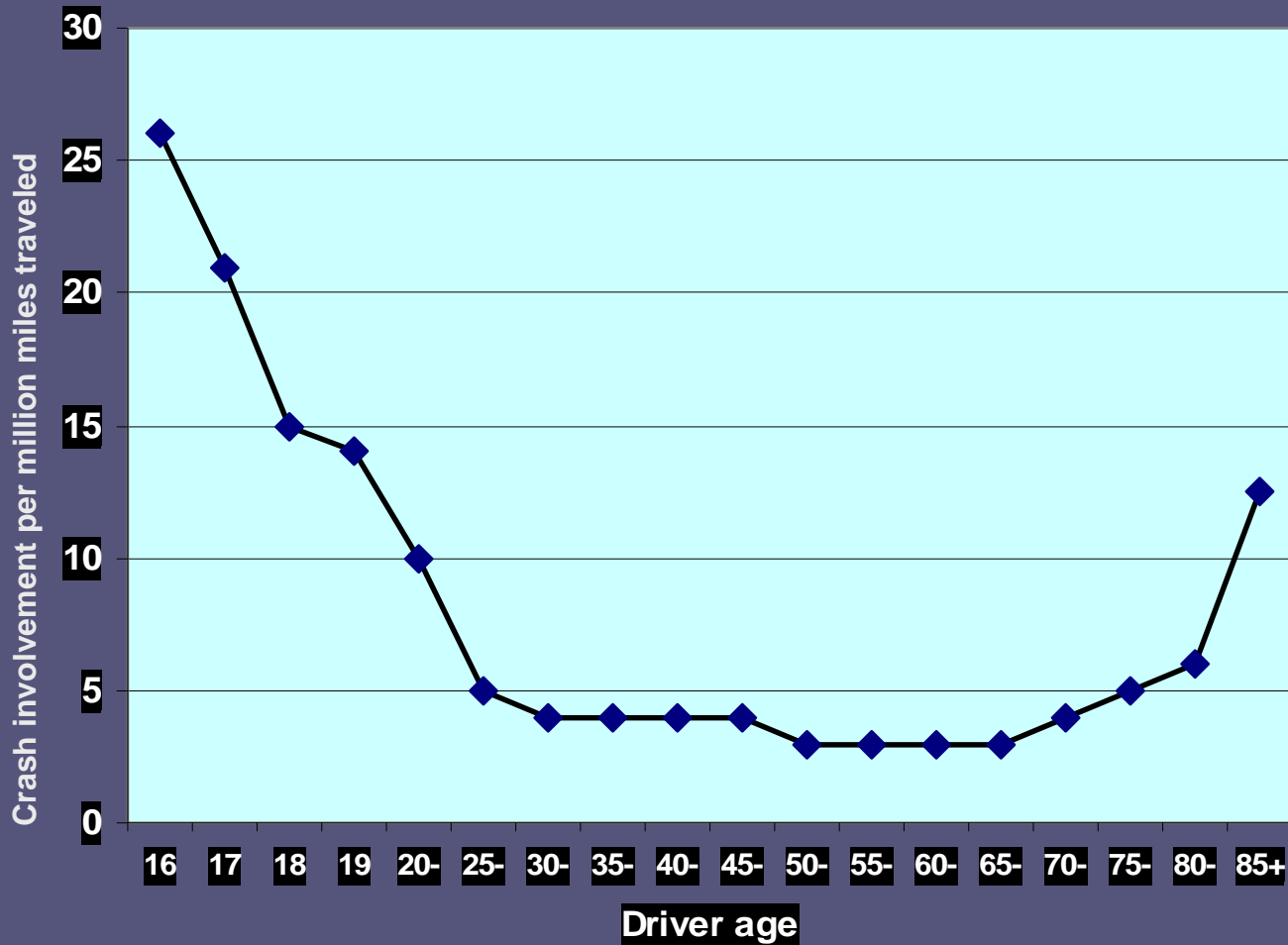


NHTSA Novice Driver Initiatives

Driver Education and Graduated Licensing

**Thomas M. Louizou, Regional Administrator
NHTSA Eastern Region
May 10, 2007**

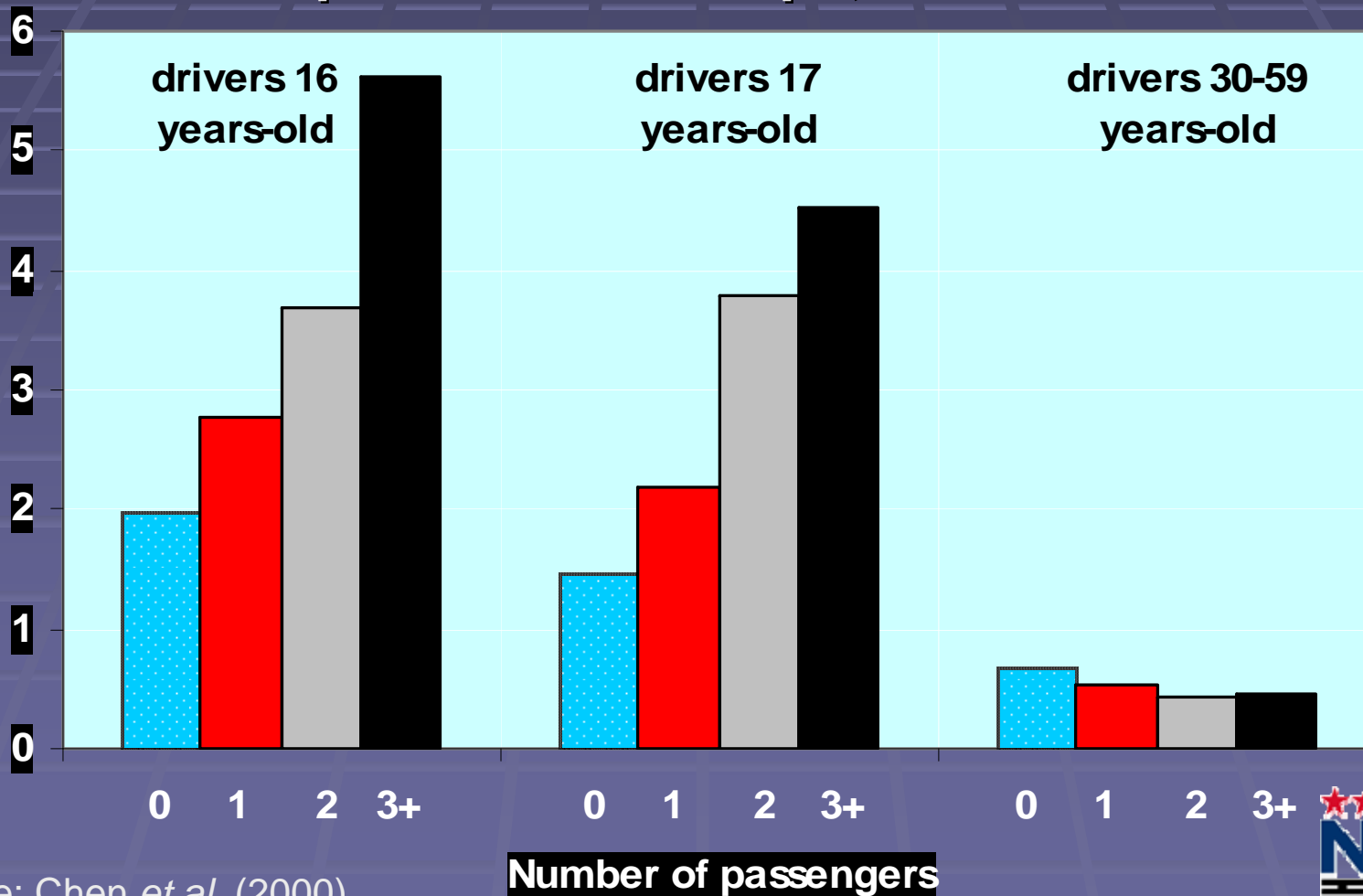
Crash Rate by Driver Age



(2001-2002 GES data; IIHS, 2006)

Driver Death Rates by Age and Passenger Presence

per 10 Million Trips, 1992-97

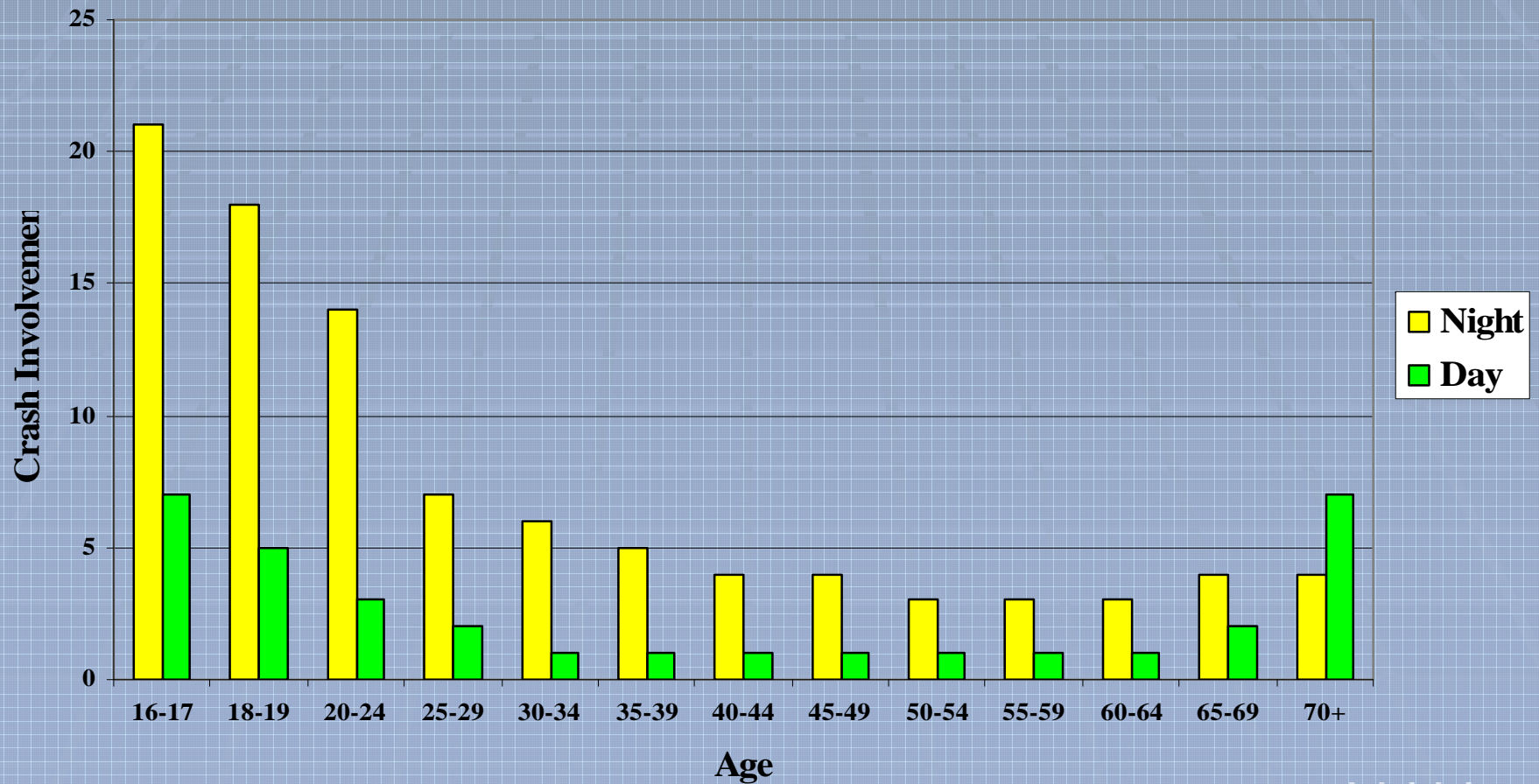


Source: Chen *et al.* (2000)

Number of passengers

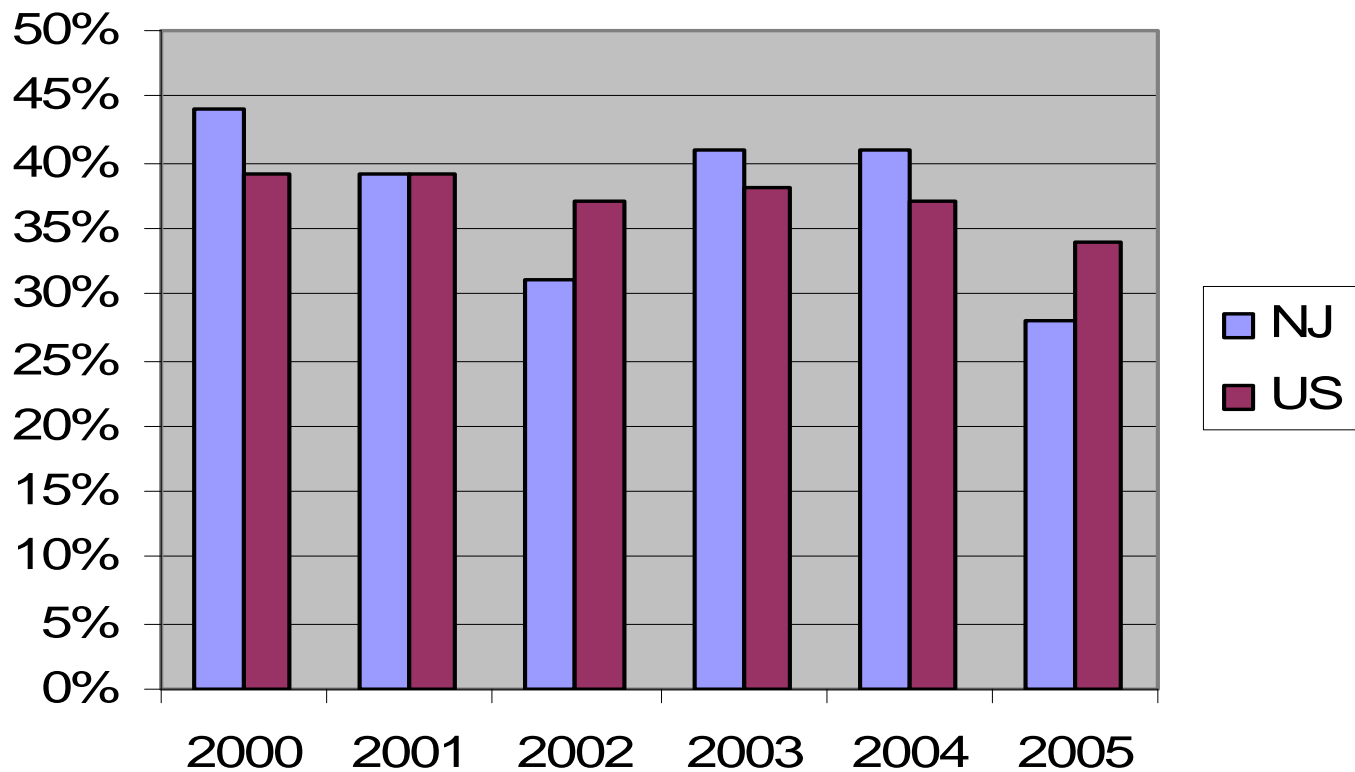


Fatal Crash Involvement, Day vs. Night



(IIHS, 2001-2002)

16-20 Year Old Alcohol Involved Fatalities 2000-2005



Crash Rates are Highest ...

- During the first few months/miles of driving
- At night
- With teenage passengers
- With alcohol

Graduated Driver Licensing

- 45 States, DC and PR
- All have 3-stage systems with most model components, although none has all components
 - Detailed list of State laws can be found at www.iihs.org
- Common restrictions include:
 - limiting passengers, nighttime driving and cell phone use
 - Safety belt requirements
 - Zero tolerance alcohol restrictions

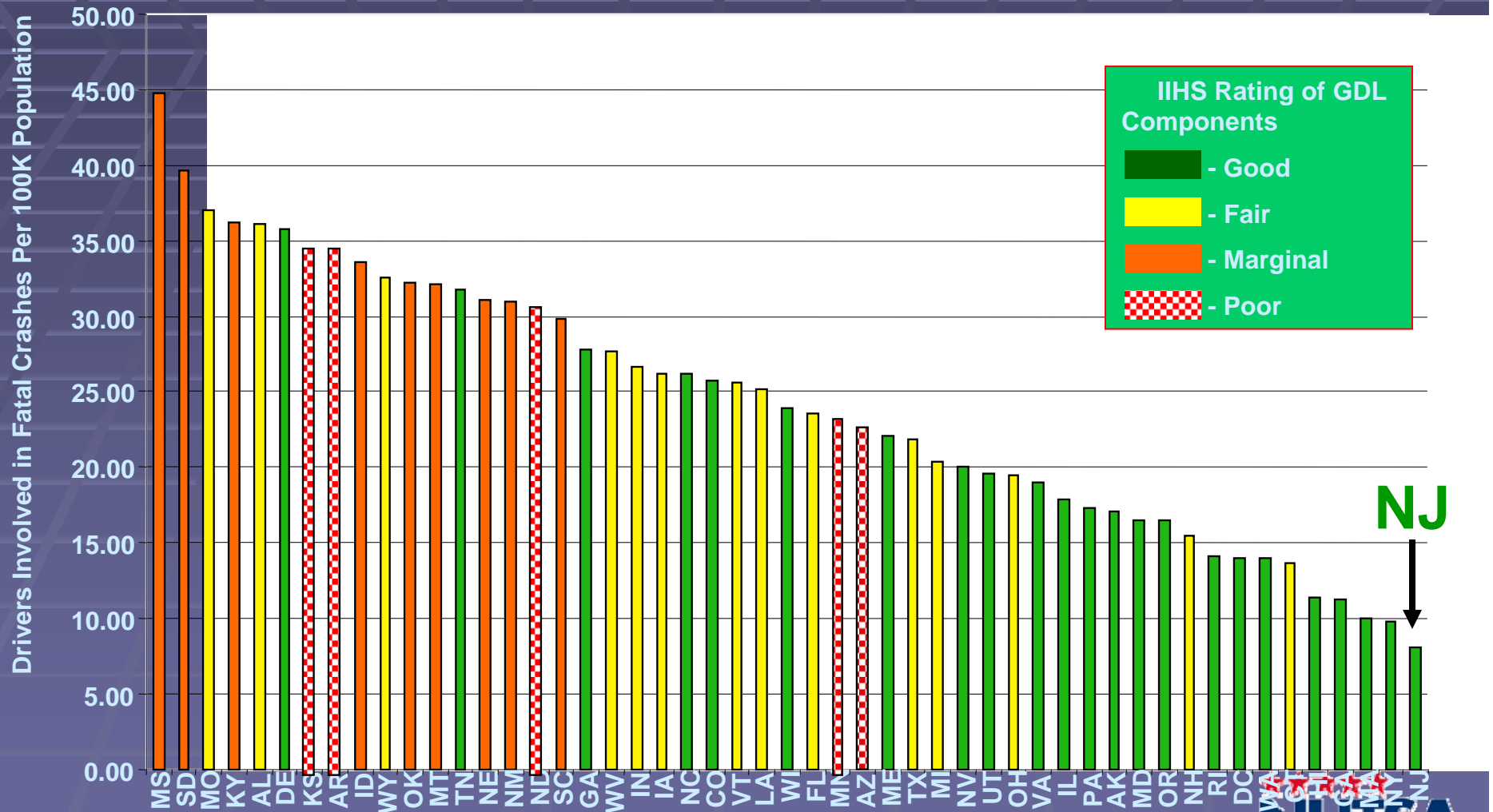
How Effective is GDL, and Why?

State	Crash Reduction
Florida	9%
Michigan	26%
North Carolina	25%
Oregon	16%
Nova Scotia	24%
Ontario	31%

- Expands the learning process
- Reduces risk exposure
- Improves driving proficiency
- Enhances motivation for self-driving

Driver Involvement Rates (Ages 15-17)

2001 - 2005



NHTSA, NCSA Information Services Branch; U.S. Census Bureau; IIHS



NHTSA Efforts

- Will convene an expert working group to develop national standards on driver ed and a national conference to consider consensus recommendations
- Continues to conduct extensive research into GDL, Driver Ed, and related issues

NHTSA State-Specific Research

- **Oregon:** GDL Program
- **Texas:** Parent-Taught driver ed
 - Parent-taught drivers are at a greater risk for crashes/injuries
- **Wisconsin and Tennessee:** GDL & belts
- **Massachusetts:** PC-based risk awareness training
- **Georgia:** TADRA Act
 - 16-year-old driver crash rates declined by 36.8% in 5+ years since enactment
- **Michigan:** GDL Program
- **Arizona:** Social Norms & Teen Belt Use

Other NHTSA Research

- Evaluation of passenger restrictions
- National GDL evaluation
- Process evaluation of Drivers Ed in the U.S.
- Feasibility Study - Evaluating Driver Ed
- Evaluation of “Driver’s Edge”
- Next Generation Driver Ed

Summary

- Young driver fatal crash rates are very high
- States vary widely with respect to crash rates and quality of laws
- GDL laws are effective in reducing crashes
- There is a relationship between low rates and strong laws
- There is limited research on impact effectiveness of driver education
- NHTSA has existing and planned products and activities to assist States

For more information:

www.nhtsa.gov

region2@dot.gov

914-682-6162

