

1756 Albertson, Abraham (Heirs (Devises of))

Town of Gloucester, Gloucester County
on Newton Creek

149 acres, 3 r., 16 p. February 10, 1756
(recorded date)

Re survey

59592

The Hon. ^{Genl} Jas. Alexander,
General of New Jersey
New York

Wine & liquors of
Abm. Alberson

149. 3roo 16bu.

Feb 4th 1757

Recd by D. 1757

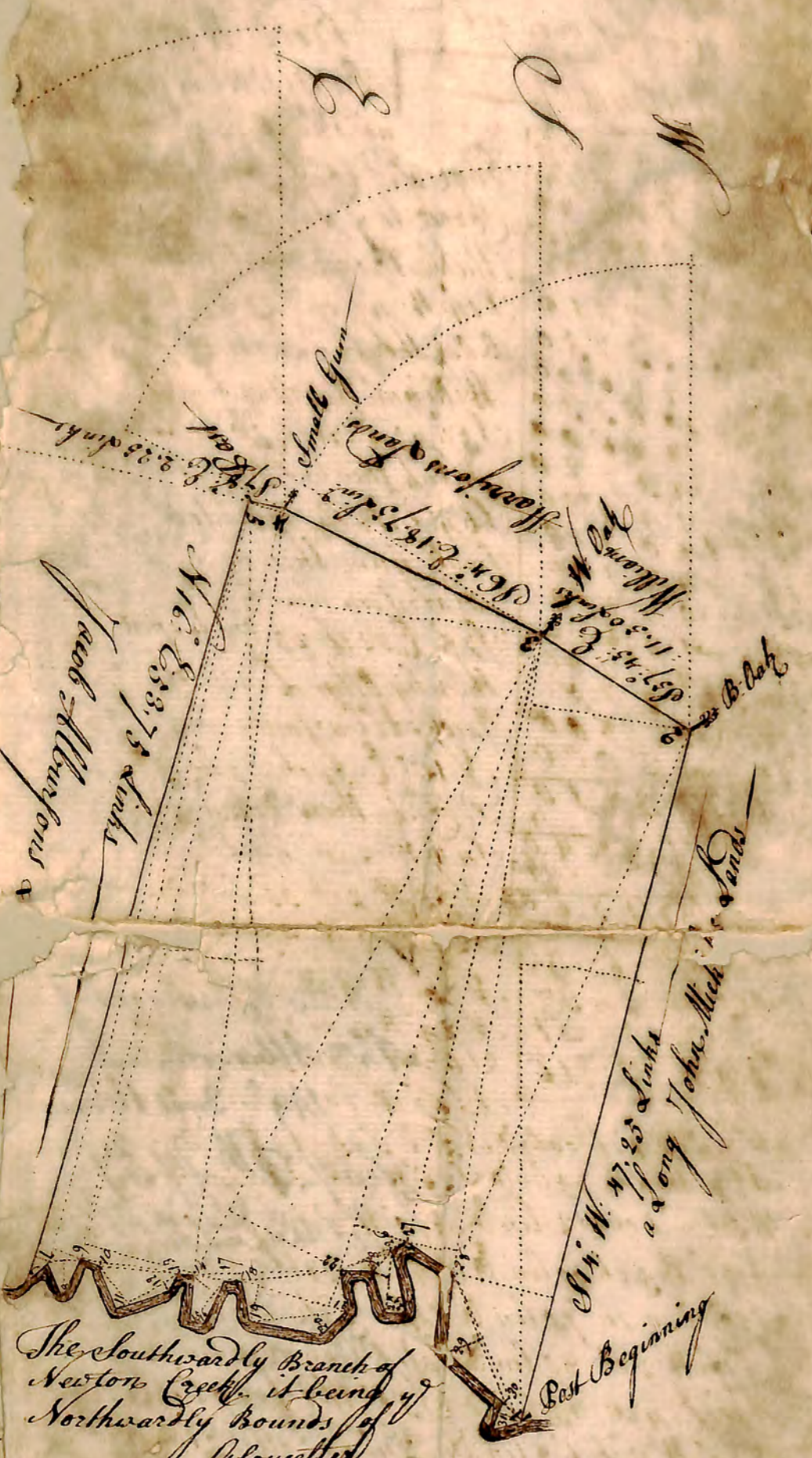
Recd 10. 1757

NTS to Ingu & w. quarterly Adm.
Conu. to his son Jacob

20 64 23
 2640
 4940
 3260
 9800
 14820
 1580800

Computation

1 st Base 1-2	47.25	Links
Corp: 24	6.70	Link
Content 13,828.75		
2 nd Base 3-25	42.55	
Corp: 2	10.50	
D: 27	3.35	
Content 29,444.60		
3 rd Base 3-22	44.20	
Corp: 27	3.65	
Content 1,429.00		
4 th Base 3-14	48.	
Corp: 22	08.	
D: 4	218.	
Content 66,094.4		
5 th Base 4-9	51.40	
Corp: 14	7.45	
D: 5	2.25	
Content 24,929.00		
6 th Base 5-7	52.30	
Corp: 9	1.95	
Content 3,073.10		
7 th Base 5-6	53.75	
Corp: 7	0.85	
Content 2,257.50		
8 th Base 7-9	2.05	
Corp: 8	2.40	
Cont: 0,246.00		
9 th Base 9-13	6.55	
Corp: 10	0.20	
Cont: 1,065.50		
10 th Base 11-13	4.70	
Corp: 10	3.20	
D: 12	0.40	
Content 8,846.0		



11 th Base 15-17	3.60	Links
Corp: 14	1.85	
D: 16	0.70	
Cont: 0,457.20		
12 th Base 14-22	9.70	
Corp: 18	0.40	
Cont: 0,194.00		
13 th Base 18-21	7.30	
Corp: 19	2.50	
D: 22	2.45	
Cont: 1,803.10		
14 th Base 19-21	6.60	
Corp: 20	1.30	
Content 942.90		
15 th Base 22-27	4.20	Links
Corp: 26	2.65	
Cont: 0,480.00		
16 th Base 22-26	3.60	
Corp: 23	2.70	
Cont: 1,126.00		
17 th Base 24-26	4.00	
Corp: 22	1.00	
D: 25	1.20	
Cont: 0,480.00		
18 th Base 25-30	9.25	
Corp: 29	2.20	
Cont: 1,017.30		
19 th Base 25-1	10.90	
Corp: 20	4.0	
Cont: 921.40		

Base 30-31 — 2 (Links)
 Corp: 1 — 1,30 Links
 Content 0,13000

Field Work Beginning

at a Cost by of —
 Doge of P. Creek Being a
 Cornet to y Lands of John
 Micklethene by J. Mickle
 S 14: W. 47 ch 25 lin to a
 B. Oak then by y Lands of
 William Harrison
 S 37: 45: E. 114 ch 30 lin to
 a W. Oak then by W. Harrison
 S 64: E. 18 ch 75 lin to a
 Small Gum then by J. —
 Harrison
 S 78: E. 2 ch 25 lin to a post
 then by other Lands of
 Jacob Alburion
 N. 18: E. 55 ch 75 lin to y
 P. Creek then down S. Creek
 S 10: W. 2 ch 90 lin to
 N. 25: W. 2 ch 55 lin to
 S 27: W. 2 ch 75 lin to
 N. 70: W. 1 ch 35 lin to
 N. 24: W. 3 ch 15 lin to
 S 67: W. 3 ch 30 lin to
 S 36: W. 1 ch 30 lin to
 N. 84: W. 1 ch 00 lin to N. 5: E 3 ch 15 lin to
 N. 75: W. 2 ch 75 lin to S 20: W. 3 ch 35 lin to
 West 1 ch 12 lin to N 10: W. 2 ch 80 lin to
 N 81: W. 3 ch 00 lin to S 48: W. 2 ch 25 lin to
 S 10: E 2 ch 70 lin to East 2 ch 25 lin to
 N 17: W 2 ch 85 lin to East 1 ch 25 lin to
 S 11: E 4 ch 15 lin to S 35: W. 1 ch 20 lin to
 N 39: W. 3 ch 68 lin to N 4: E 5 ch 30 lin to
 N 44: W. 3 ch 00 lin to N 14: E 2 ch 00 lin to
 S 27: W. 1 ch 70 lin to y Beginning
 Containing 149 Acres 3 Rods & 16 Perches
 With y Allowance for Highways Street Meas-
 sure of Chainbearers

Josiah Word & Josiah Alburion
 Affirmed before me
 S. Cement Junr
 Dep: Surd:

of Gloucester County
 of New Jersey
 I, J. Cement Junr, Dep: Surd. of Gloucester County, do hereby certify that the within and foregoing is a true and correct copy of the original survey as the same appears in the records of the County of Gloucester, New Jersey, and as the same was made and approved by the Surveyors of the County of Gloucester, New Jersey, on the 16th day of June, 1782, in the presence of the County Surveyors and the Justice of the Peace of the County of Gloucester, New Jersey, and as the same is a true and correct copy of the original survey as the same appears in the records of the County of Gloucester, New Jersey, and as the same was made and approved by the Surveyors of the County of Gloucester, New Jersey, on the 16th day of June, 1782, in the presence of the County Surveyors and the Justice of the Peace of the County of Gloucester, New Jersey.

Andrew Robinson Purchased of Edward Bytling and Trustees by Deed of Lease & Release bearing Date of Last Day of February
 And of first Day of March Anno Domini 1676 and Whereas the S. Abraham Albertson being so Seaz as aforesaid of y^e aforesaid
 200 Acres of Land did (after he had Conveyed a part thereof to his Son Jacob Albertson) Make his Last will & Testament bearing
 Bearing Date of 17th Day of December Anno Domini 1739 and therein & thereby did Devise all the Residue and Remainder thereof
 Unto his three Sons Abraham Joseph & Ephraim Albertsons to hold to them their heirs & Assigns for ever and Whereas the S.
 Abrah^m Albertson the Son did Intestate and without Issue by Reason whereof his Share Decended unto his Eldest Brother
 Joseph Albertson who did leave Issue a Son to wit Ephraim Albertson

son of Ephraim Albertson

In Pursuance of your Order to me Directed bearing Date of Sixth Day of February Anno Domini 1755
 Ordering me to Refervey unto & for y^e Heirs & Devisees of Abraham Albertson Dece^d all that Tract of Land of theirs Situate in
 the Town & County aforesaid being that 200 Acres of Land herein before Mentioned

for the said Jacob Albertson & his Sons Joseph & Ephraim Albertson

I HAVE Referred the Same which is bounded as followeth Viz: Beginning at a Post Standing of Southwardly Side
 of y^e Southwardly Branch of Newton Creek being a Corner to y^e Lands of John Mickle Thence by S. Mickle first Course
 South fourteen Degrees west Forty seven Chains twenty five Links to a Black Oak Mark four Blafes Thence
 by y^e Lands of William Harrison 2 South Fifty seven Degrees fifty five Minutes East Eleven Chains fifty Links to a
 White Oak Mark four blafes Thence Ditto 3 South Sixty four Degrees East Eighteen Chains Seventy five Links to a
 Small Gum Mark four Blafes Thence Ditto 4 South Twenty eight Degrees East two Chains & fifty Links Twenty five
 Links to a Post Thence by Other Lands Now y^e aforesaid Jacob Albertsons 5 North Sixteen Degrees East fifty three
 Chains Seventy five Links to y^e aforesaid Creek Thence Down y^e S. Creek by y^e Several Courses thereof and bounding
 thereof to y^e Beginning in which Bounds Contains one Hundred & forty nine Acres three Rods & sixteen
 Perches of Land with y^e usual Allowance for Highways — Jam^s & Sam^l Clem^t Jul^y Deputy Sur^r
 So James Alexander
 Sur^r Gen^l of New Jersey



MS. to be given to y^e parties at the
 time of the survey

MS. to be given to y^e parties at the
 time of the survey

MS. to be given to y^e parties at the
 time of the survey

MS. to be given to y^e parties at the
 time of the survey

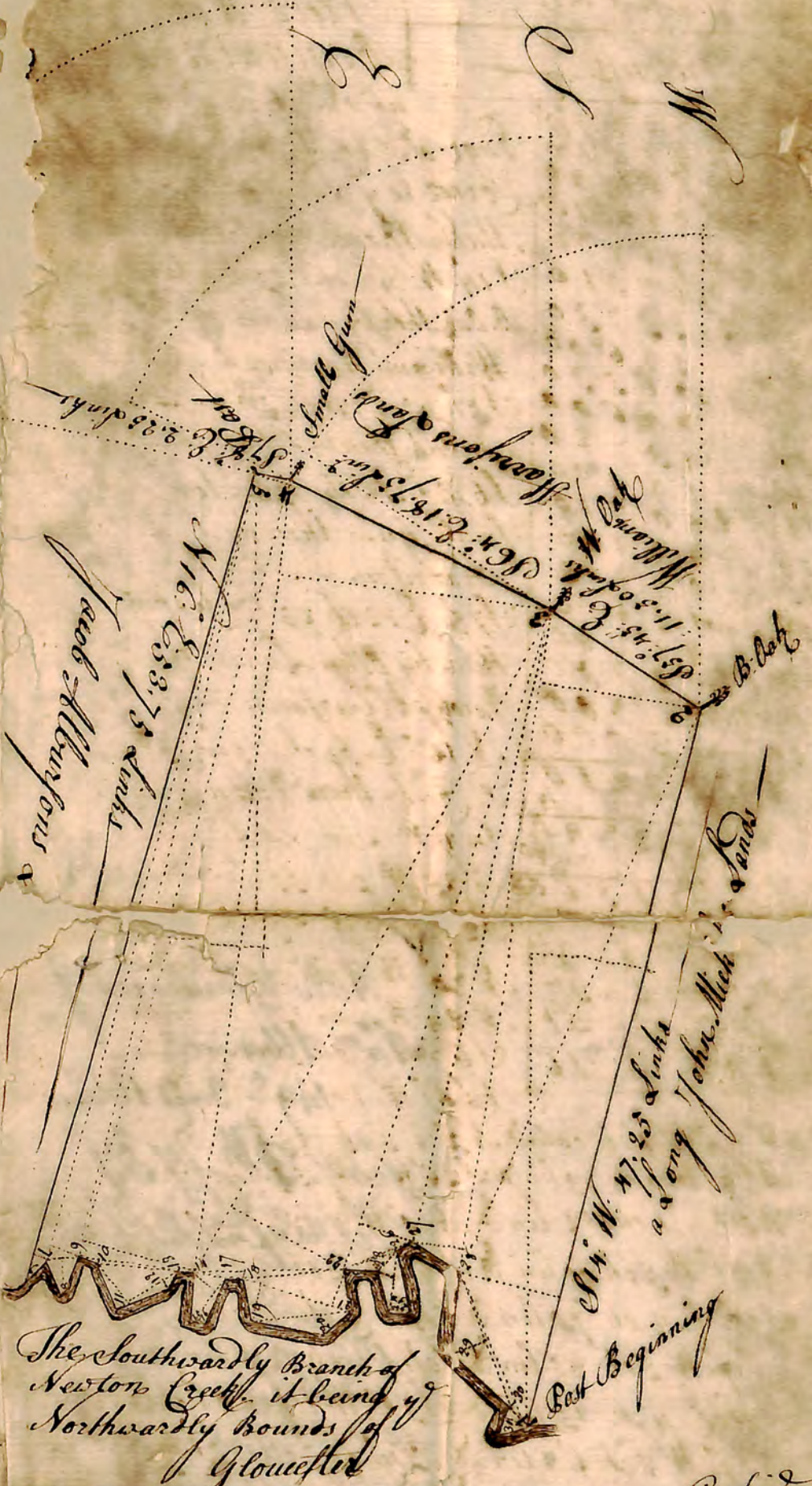
James Alexander
 Samuel Clemens
 Deputy Surveyors

64 23
2640
4940
3200
988000
14820
1580800

Computation

1 st Base 1-2	47.25	Link
Corp: 2	6.70	Link
Content 15,828.75		
2 nd Base 3-28	42.55	
Corp: 2	10.50	
Content 29,444.60		
3 rd Base 3-22	44.20	
Corp: 27	3.62	
Content 15,828.75		

4 th Base 3-11	48.	
Corp: 22	08.	
Content 66,094.4		
5 th Base 4-9	51.40	
Corp: 14	7.45	
Content 24,929.00		
6 th Base 5-7	52.30	
Corp: 9	1.95	
Content 3,073.10		
7 th Base 5-6	33.75	
Corp: 7	0.85	
Content 2,257.50		
8 th Base 7-9	2.05	
Corp: 8	2.40	
Content 0,246.00		
9 th Base 9-13	6.55	
Corp: 10	0.20	
Content 1,063.50		
10 th Base 11-13	4.70	
Corp: 10	3.20	
Content 0,846.0		



11 th Base 15-17	3.60	Link
Corp: 14	1.85	
Content 0.42720		
12 th Base 14-22	9.70	
Corp: 18	0.110	
Content 0.19400		
13 th Base 18-21	7.30	
Corp: 19	2.50	
Content 1,803.10		
14 th Base 19-21	6.60	
Corp: 20	1.30	
Content 0,429.00		
15 th Base 22-27	4.820	Link
Corp: 26	4.820	
Content 1,048.00		
16 th Base 22-26	3.60	
Corp: 23	0.70	
Content 1,126.00		
17 th Base 24-26	4.08	
Corp: 28	1.00	
Content 0,480.00		
18 th Base 28-30	9.25	
Corp: 29	2.20	
Content 1,017.50		
19 th Base 28-1	10.90	
Corp: 30	2.40	
Content 0,214.00		

10th Base 30-31 — 2 Chain
Corp: 1 — 1.30 Link
Content 0.13000

Contents

13	828.75	Doge of P. Creek being a
29	444.60	Corner to y ^e Lands of John
68	094.45	Mickle thence by P. Mickle
24	929.00	S 14: W. 47 ch 25 lin to a
5	073.10	B. Oak then by y ^e Lands of
2	257.50	William Harrison
2	46.00	S 37: 45: E. 11 ch 30 lin to
4	46.00	a W. Oak then by P. Harrison
1	37.20	S 64: E. 18 ch 75 lin to a
1	803.10	Small Gun then by P.
4	2900	Harrison
1	2600	S 78: E. 2 ch 25 lin to a post
1	48000	then by other Lands of
1	16017.50	Jacob Alburfon
2	1800	N. 16: E. 35 ch 75 lin to y ^e
1	3000	P. Creek then Down P. Creek
1	3210	S. 44: W. 2 ch 90 Lin to
1	2928.40	N. 23: W. 2 ch 55 lin to
1	13600	S. 2: W. 2 ch 75 lin
1	2137	N. 70: W. 1 ch 38 lin to
1	21	N. 24: W. 3 ch 15 lin to
1	316	S 67: W. 3 ch 30 lin to
1	16	S 36: W. 1 ch 30 lin to
1	15	N. 84: W. 1 ch 00 lin to N. 3: E. 3 ch 15 lin to
1	15	N. 75: W. 1 ch 75 lin to S 26: W. 3 ch 35 lin to
1	15	West. 1 ch 12 lin to N. 10: W. 2 ch 80 lin to
1	15	N. 81: W. 3 ch 00 lin to S. 48: W. 2 ch 25 lin to
1	15	S. 10: E. 2 ch 70 lin to East 2 ch 25 lin to
1	15	N. 17: W. 2 ch 85 lin to East 1 ch 25 lin to
1	15	S. 11: E. 4 ch 15 lin to S. 58: W. 1 ch 20 lin to
1	15	N. 39: W. 3 ch 68 lin to N. 41: E. 3 ch 30 lin to
1	15	N. 44: W. 3 ch 00 lin to N. 14: E. 2 ch 00 lin to
1	15	S. 87: W. 1 ch 70 lin to y ^e Beginning

Containing 149 acres 3 Rods & 16 Courses
with y^e Allowance for Highway, Street Measure
of Chainbearers

Josiah Word & Josiah Alburfon
Affirmed before me
S. Cement Junr.
Deft. Sur.

2040
 4940
 3200
 988000
 4820
 58,0800

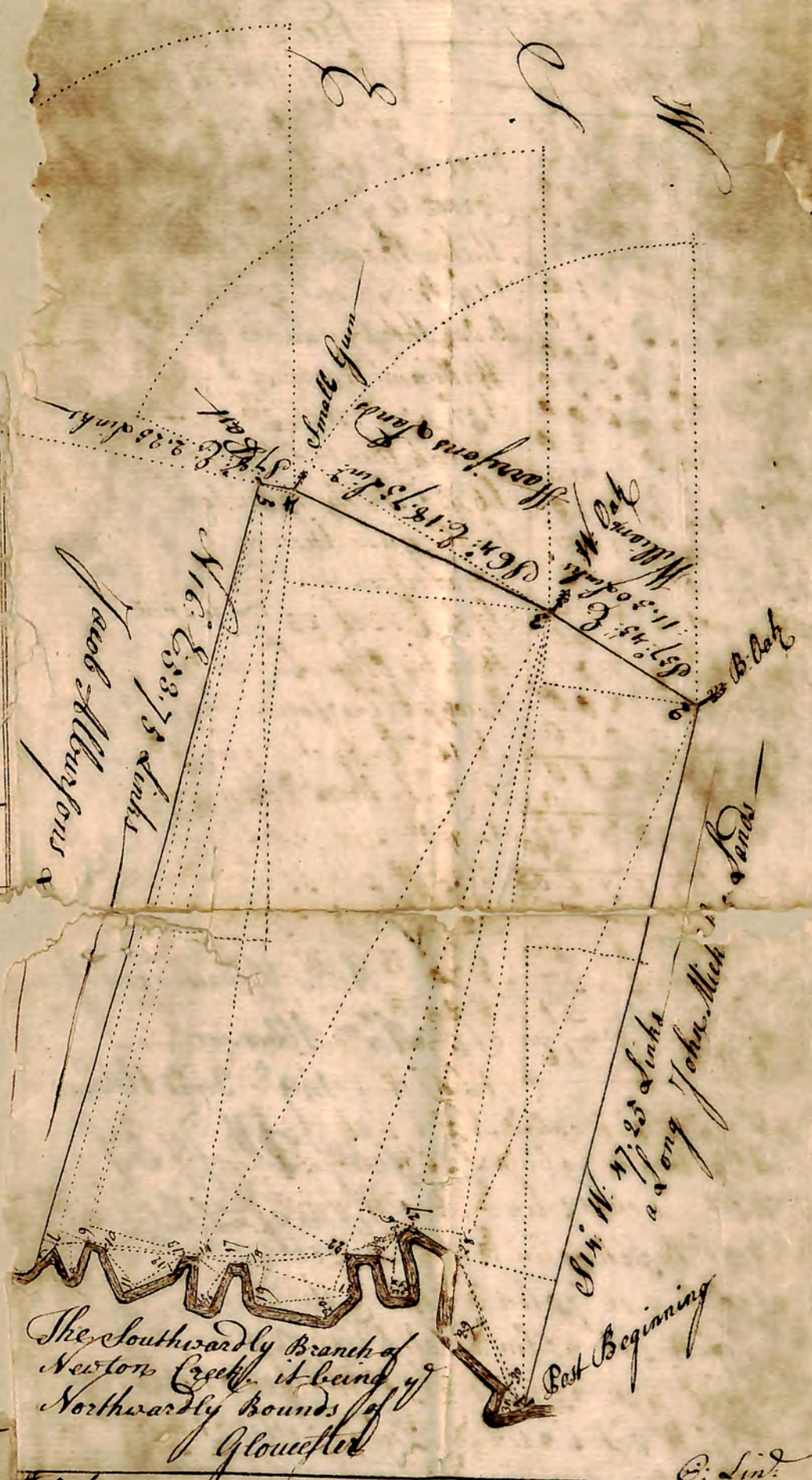
tion

Per Links
 47.25
 6.70 Link
 82475

42.55
 10.50
 3.35
 9,44460
 44.20
 3.65

48.
 08.
 18.
 66,0944
 51.40
 7.45
 2.25
 24,92900

52.30
 1.95
 3,07310
 33.75
 0.85
 2,25750



The Southwardly Branch of
 Newtons Creek, it being of
 Northwardly Bounds of
 Gloucester

15th Base 15-17 — 3.60 Link
 15th Base 22-27 — 4.80
 C. Link

20 64 23
 2640
 4940
 9880 00
 14820
 1580800

Computation

1st Base 1-2 — 47.25
 Corp: 04 — 6.70 Link
 Content 13.82875

2nd Base 3-28 — 42.55
 Corp: 2 — 10.50
 D: 27 — 23.35
 Content 29.44460

3rd Base 3-22 — 44.20
 Corp: 27 — 3.65
 Content 11.81150

4th Base 3-11 — 48.
 Corp: 22 — 08.
 D: 4 — 18.
 Content 66.0944

5th Base 4-9 — 51.40
 Corp: 14 — 7.45
 D: 5 — 2.25
 Content 24.92900

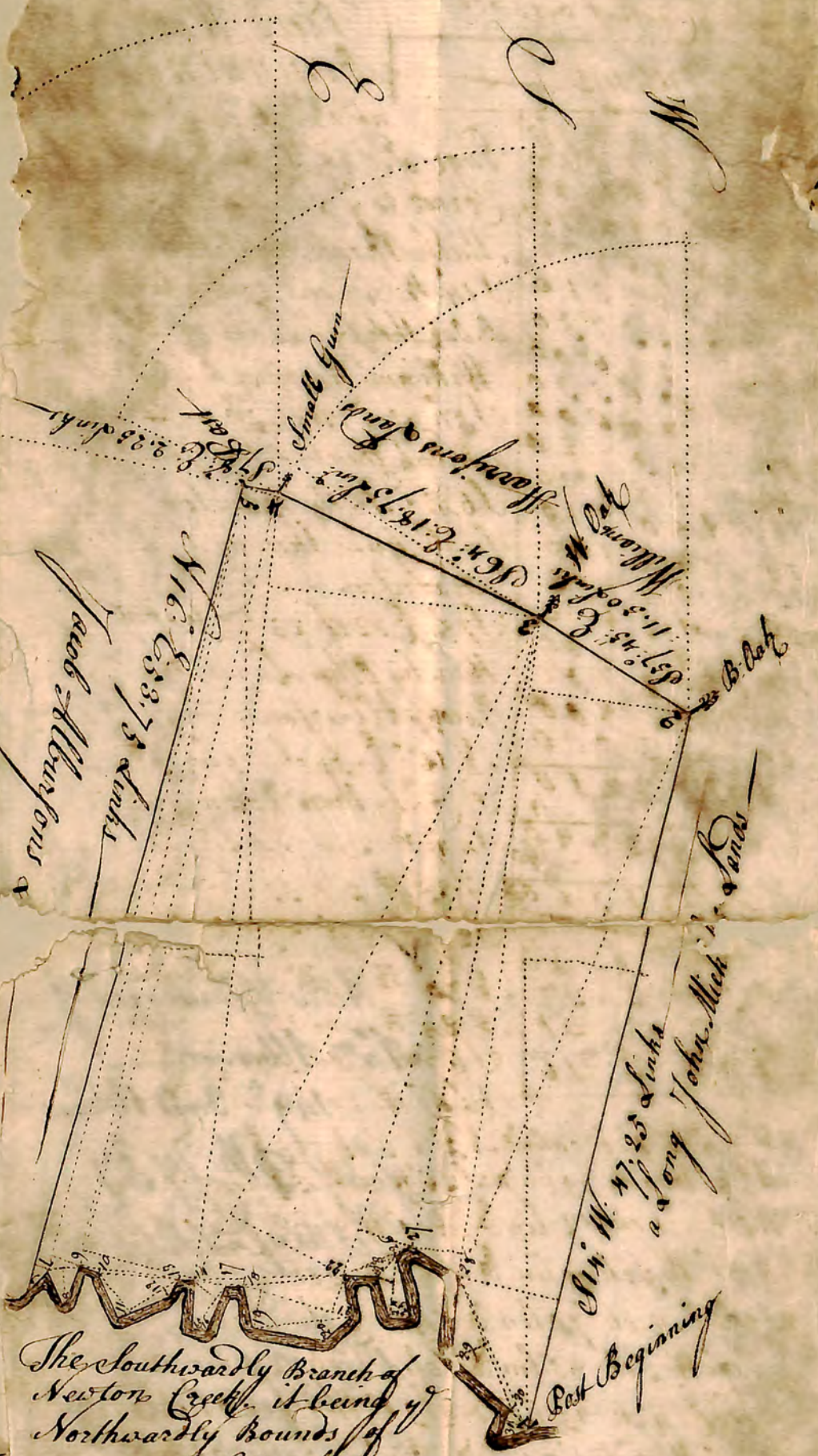
6th Base 5-7 — 52.30
 Corp: 9 — 1.95
 Content 3.07310

7th Base 5-6 — 33.75
 Corp: 7 — 0.85
 Content 2.25750

8th Base 7-9 — 2.05
 Corp: 8 — 2.40
 Content 0.24600

9th Base 9-13 — 6.55
 Corp: 10 — 0.20
 Content 1.06550

10th Base 11-13 — 4.70
 Corp: 10 — 3.20
 D: 12 — 0.40
 Content 0.8460



The Southwardly Branch of
 Newton Creek, it being of
 Northwardly Bounds of
 Gloucester

11th Base 15-17 — 3.60 Link
 Corp: 14 — 1.85
 D: 16 — 0.70
 Content 0.43720

12th Base 14-22 — 9.70
 Corp: 15 — 0.40
 Content 0.19400

13th Base 18-21 — 7.30
 Corp: 19 — 2.50
 D: 22 — 2.40
 Content 1.80310

14th Base 19-21 — 6.60
 Corp: 20 — 1.30
 Content 0.42900

15th Base 22-27 — 4.80
 Corp: 26 — 0.20
 Content 0.48000

16th Base 22-26 — 3.60
 Corp: 23 — 0.70
 Content 1.26000

17th Base 24-26 — 4.00
 Corp: 28 — 1.00
 D: 25 — 1.20
 Content 0.48000

18th Base 25-30 — 9.25
 Corp: 29 — 2.20
 Content 1.01730

19th Base 24-1 — 10.90
 Corp: 30 — 2.40
 Content 0.21400

10th Sep 30-31 - 2 (Part)
 Corpse - 1 - 1.30 Lin.

Content 0.13000

Contents

Field Work
 Beginning

at a Cost by of

15	82875	Doge of P. Creek being a
29	44460	Corner to y ^e Lands of John
3	80444	Micklethene by S. Mickle
4	6609445	S 14: W. 47 ch 25 lin to a
5	24192900	B. Oak then by y ^e Lands of
6	3507310	William Harrison
7	2125750	S 37: 43: E 11 ch 30 lin to
8	24600	a W. Oak then by S. Harrison
9	06330	S 64: E 18 ch 75 lin to a
10	84600	Small Gum then by S.
11	43720	Harrison
12	19400	S 78: E 2 ch 23 lin to a point
13	480310	then by other Lands of
14	42900	Jacob Alburson
15	04800	N. 16: E 33 ch 75 lin to y ^e
16	12600	P. Creek then Down S. Creek
17	48000	S 44: W. 2 ch 90 Lin &
18	1101750	N. 23: W. 2 ch 35 lin &
19	21800	S 2: 55: 2 ch 75 lin
20	13000	N. 70: W 1 ch 38 lin &

15773210

292840

3711360

W. R. E

Street 75 7 2 37 N. 70: W 1 ch 38 lin &

7 3 21 N. 23: W 2 ch 15 lin &

149 8 16 S 67: W 3 ch 30 lin &

S 36: W. 1 ch 30 lin &

N. 84: W 1 ch 00 lin & N. 3: E 3 ch 15 lin &

N. 75: W 0 ch 73 lin & S 20: W. 3 ch 35 lin &

West 1 ch 12 lin & N. 10: W. 2 ch 80 lin &

N. 81: W. 3 ch 00 lin & S. 48: W. 2 ch 25 lin &

S 10: E 2 ch 70 lin & East 2 ch 25 lin &

N. 17: W 2 ch 85 lin & East 1 ch 25 lin &

S 11: E 4 ch 15 lin & S 38: W. 1 ch 20 lin &

N. 39: W. 3 ch 68 lin & N. 41: E 3 ch 30 lin &

N. 46: W. 3 ch 00 lin & N. 14: E 2 ch 00 lin &

S 87: W. 1 ch 70 lin to y^e Beginning

Containing 149 acres 3 Rods & 16 Perches
 with y^e Allowance for Highways Street Mea-
 sure of Chainbearers

Josiah Word & Josiah Alburson
 Affirmed before me

S. Clement Junr. + Junr.
 Dep. Sur.

Bep 30-31 — 2 Chai.
 Corpse — 1 — 1.30 Lin.
 Content 0,13000

Contents

15	82875
29	44460
35	04440
66	09445
24	2900
5	307310
6	2,25730
7	24600
8	24600
9	06530
10	84600
11	43720
12	19400
13	480310
14	42900
15	04800
16	12600
17	48000
18	1601730
19	21800
20	13000

Field Work Beginning
 at a Post by off
 Doge of S. Creek being a
 Corner to y^e Lands of John
 Micklethence by S. Mickle
 S 14: W. 47 ch 23 lin to a
 B. Oak then by y^e Lands of
 William Harrison
 S 37: 45: E. 11 ch 30 lin to
 a W. Oak then by S. Harrison
 S 64: E. 18 ch. 75 lin to a
 Small Gum then by S.
 Harrison
 S 78: E. 2 ch 23 lin to a post
 then by other Lands of
 Jacob Alburson
 N. 16: E. 33 ch. 73 lin to y^e
 S. Creek then Down S. Creek
 S 44: W. 2 ch. 90 Lin. &
 N. 25: W. 2 ch. 55 lin. &
 S 2: W. 2 ch. 73 lin
 N. 70: W. 1 ch. 38 lin &
 N. 24: W. 2 ch. 15 lin &
 S 67: W. 3 ch 30 lin &
 S 36: W. 1 ch 30 lin &
 N. 84: W. 1 ch 00 lin & N. 3: E 3 ch. 15 lin &
 N. 75: W. 2 ch 73 lin & S 26: W. 3 ch 35 lin &
 West 1 ch 12 lin & N. 10: W. 2 ch 80 lin &
 N. 81: W. 3 ch 00 lin & S 48: W. 2 ch 25 lin &
 S 10: E 2 ch 70 lin & East 2 ch 23 lin &
 N. 7: W. 2 ch 83 lin & East 1 ch 23 lin &
 S 11: E 4 ch 15 lin & S 38: W. 1 ch 20 lin &
 N. 59: W. 3 ch 68 lin & N. 4: E 3 ch 30 lin &
 N. 44: W. 3 ch 00 lin & N. 14: E 2 ch 00 lin &
 S 87: W. 1 ch 70 lin to y^e Beginning

157	73210
292	840
371	360
7	2
7	3
149	3

Containing 149 Acres 3 Rods & 16 Perches
 with y^e Allowance for Highways Street Mea-
 sure of Chainbearers

Josiah Word & Josiah Alburson
 Affirmed before me

S. Clement Junr.
 Dep. Sur.

Gloucester County

William Albertson & Sale of
 of Henry & Maria. Dec. by his Indenture bearing Date of first Day of June in the year 1793
 Did Grant and Convey unto Abraham Alburson of the Town & County of Gloucester in the Province of
 New Jersey Yeom: the full Quantity of 200 Acres of Land whereof being Situate on the South Side of y^e
 Southwardly Branch of Newton Creek within y^e Town Bounds of Gloucester aforesd. and was Purchased by
 the S. William Albertson by an Indenture bearing Date of first Day of September Anno: Domini: 1692 of
 Andrew Robinson and was Forthwith Said forth unto y^e Andrew Robinson as his full Share and Portion
 of Land Appertaining to one Property within y^e Town Bounds aforesd: which Property of Land was by S. Andrew

Gloucester County

William Albertson, late of
of Pennsylvania Com: Dec: by his Indenture bearing Date of first Day of June 1795
Did Grant and Convey unto Abraham Albertson of the Town & County of Gloucester in the Province of
New Jersey Com: the full Quantity of 200 Acres of Land whereof being Situate on the South Side of a
Southwardly Branch of Newton Creek within y^e Town Bounds of Gloucester afores: and was Purchased by
the S: William Albertson by an Indenture bearing Date of first Day of September Anno Domini 1692 of
Andrew Robinson and was Formerly Said forth unto y^e S: Andrew Robinson as his full Share and Portion
of Land appertaining to one Propriety within y^e Town Bounds afores: which Propriety of Land was by S: Andrew
Andrew

Andrew Robinson Purchased of Edward Bylling and Trustees by Deed of Lease & Release bearing Date of Last Day of February
And of first Day of March Anno Domini 1676 and Whereas the S^r. Abraham Albertson being so Seaz as afores^d. of y^e afores^d.
200 Acres of Land Did (after he had Conveyed apart thereof to his Son Jacob Albertson) Make his Last will & Testament bearing
Bearing Date of 17th Day of December Anno Domini 1739 and therein & thereby Did Devise all the Residue and Remainder thereof
Unto his three Sons Abraham Joseph & Ephraim Albertsons to hold to them their heirs & assigns for ever. And Whereas the S^r.
Abra^m. Albertson the Son Died Intestate and without Issue by Reason whereof his Share Decended unto his Eldest Brother
Ephraim Albertson who Died leaving Issue a Son to wit Ephraim Albertson

in witness whereof
Ephraim Albertson

In Pursuance of your Order to me Directed bearing Date of Sixth Day of February Anno Domini 1755
Ordering me to Survey unto & for y^e Heirs & Devisees of Abraham Albertson Dec^d. all that Tract of Land of theirs Situate in
the Town & County aforesaid being that 200 Acres of Land herein before mentioned
I HAVE Refused the Same which is bounded as followeth Viz^t. Beginning at a Post Standing of Southwardly Side
of y^e Southwardly Branch of Newton Creek being a Corner to y^e Lands of John Mickle Thence by S^r. Mickle first Course
South fourteen Degrees west Forty Seven Chains Twenty five Links to a Black Oak Mark four Blafes Thence
by y^e Lands of William Harrifon 2 - South Fifty ^{Links} Degrees fifty five Minutes East Eleven Chains fifty Links to a
White Oak Mark four Blafes Thence Ditto 3 - South Sixty four Degrees East Eighteen Chains Seventy five Links to a
Small Gum Mark four Blafes Thence Ditto 4 - South Twenty eight Degrees East two Chains & fifty Links Sixty five
Links to a Post Thence by Other Lands Now y^e afores^d. Jacob Albertsons 5 - North Sixteen Degrees East fifty three
Chains Seventy five Links to y^e afores^d. Creek Thence Down y^e S^r. Creek by y^e Several Courses thereof and bounding
thereof to y^e Beginning in which Bounds Contains one Hundred & forty Nine Acres three Rods & Sixteen
Perches of Land with y^e usual Allowance for Highways - - - - - Jam^s &c. Jam^s. Cum^o. J^r. Deputy Sur^r.
So James Alexander
Sur^r. Gen^l. of New Jersey