

TECHNICAL REFERENCE DOCUMENT

ESTIMATING GROWTH AND ITS EFFECTS

PART I: LAND AVAILABILITY ANALYSIS

January, 1989

Prepared by: Office of State Planning, 150 W. State Street, Trenton, NJ

For: New Jersey State Planning Commission

ESTUKTUG QOQH AMD ITS KirVht.TIS
Part I: land Availability Analysis

Technical Reference Document

January, 1989

Office of State Planning undertook a mapping effort to estimate the amount of developable, developed, and undevelopable land in New Jersey. *This* project was begun in late summer of 1987, and was part of a larger analysis associated with the January 1988 draft Preliminary State Development and Redevelopment Plan. Other portions of the analysis are designed to allocate population and employment to the developable land, and calculate the fiscal impacts of the resulting distribution.

As part of this process, the Land Availability Analysis helps to determine whether there is enough vacant, developable land in the state to accommodate growth under the State Development and Redevelopment Plan. The Tier maps generated for the Draft Preliminary Plan of January 1988 were used in conjunction with the Land Availability Analysis mapping to obtain figures for developable, developed, and undevelopable land by Tier, by county. BUs report documents the methodology and conventions used to map the Tier system and the Available Land.

She estimates of developable land derived from this analysis are based on preliminary information at a regional scale. They were intended for the purposes of developing the Preliminary State Development and Redevelopment

Plan. They are not to be used to supersede any estimate of vacant developable land determined for the New Jersey Council on Affordable Housing or for any other such purpose.

The Tier system was mapped based on available data, representing current conditions but not future growth patterns. Further, to come with other statistics used for the Plan, the Land Availability Analysis does not include areas developed since the date of the aerial photographs (1986), proposed development projects, or designated corridor centers, villages, or hamlets.

Three existing planning regions - the Pinelands, Hackensack Meadowlands District, and Coastal Area (CMRA) - are excluded from the Land Availability Analysis. These areas are described in Volume II, Statewide Policies: Areas of Critical Concern.

The project falls into two broad categories, consisting of four work phases:

TIER MAPPING

- Tier factor mapping
- Tier delineations

LAND AVAILABILITY ANALYSIS

- Mapping of developable, developed, and undevelopable land
- Estimates of developable, developed, and undevelopable land

Each of these phases is described in the following sections.

Mapping was prepared at the scale of 1:24,000, or 1 inch - 2,000 feet. At this scale there are 127 maps, or quadrangles, that cover the state of New Jersey outside of the Areas of Critical Concern (see Attachment A).

These quadrangles, or quads, correspond to the U.S. Geological Survey (USGS) 1:24,000 scale series of topographic (depicting relief by means of contour lines, and showing predominant land use and cultural features) quads, and to a set of orthophotoquads. An orthophotoquad is an aerial photograph that is rectified to ~~corribul~~ for airplane tilt and terrain relief. This yields a product with a scale that is constant throughout the photograph. These orthophotoquads (hereafter 'photoquad') were produced from black & white aerial photographs taken in March 1986, for the New Jersey Department of Environmental Protection (NJDEP), Office of Environmental Analysis. Each photoquad corresponds to a USGS topoquad in land area depicted, quad number and name.

All *maps* for this project were drafted on translucent film (mylar), so that they could be overlaid onto the photoquads. The photoquads were used as a base map for much of the mapping.

TIKK MAPPING

The Tier system used in the Draft Preliminary State Development and Redevelopment Plan defines eight classifications (seven tiers and one set of sub-tiers) of areas in which different growth management strategies are recommended. Tier boundaries are delineated according to criteria which include several factors, summarized in Attachment B. The delineation of each Tier may vary from the delineation criteria as a result of the amount, detail, and extent of data available for the Draft Preliminary Plan. Therefore, this section describes the procedures used to delineate Tiers for the purposes of the Draft Preliminary Plan.

TIH* FACFCR MAPPING

Tier boundaries are determined by a number of factors, some of which were mapped separately and then aggregated to contribute to delineating the tiers. Tier factor maps were prepared for Sewer Service Areas, Pristine Watersheds, Potable Water Supply Reservoir Watersheds, Critical Plant and Wildlife Habitats, and Municipal Boundary Lines. Tier factor maps were reviewed by county planning agencies and NJDEP Division of Water Resources (for Sewer Service Area maps) to verify accuracy of the data.

Sewer service area maps were prepared using source maps obtained from counties, municipalities, sewerage authorities, and NJDEP, Division of Water Resources. These source maps were at various scales, including - 1:24,000. When they were at a different scale, the information was transferred using known reference points on the source map and photoquad.

Sewer service areas indicated on the sewer service factor maps were classified into three categories which correspond to existing and planned areas for sanitary sewer service:

Sewer Service Areas - existing and planned sewer service areas that are within the jurisdiction of a sewage collection or treatment agency, and have been approved by NJDEP for sanitary sewers as part of a Water Quality Management Plan, Wastewater Facilities Plan, or Wastewater Management Plan (approved 201 or 208 planning areas) ;

Collection Areas - existing sewer service areas that are currently served by sanitary sewer lines. Bus designation was used only when no other information on sewer service areas was available; and Proposed Areas - planned sewer service areas that are proposed for sewer service or for the extension of sewer JinpB by counties, munlcial ities, or sewerage authorities, but are not yet approved by NJDEP. For each area classified, the source map was identified by number. The Technical Reference Document "Sewer Data Sources" lists these source maps and their numbers.

Pristine Watersheds

Pristine watersheds were determined by identifying the land areas draining into water bodies classified by the New Jersey Department of Environmental Protection (NJDEP) as "Category Ore", "Trout Production", or "Trout Maintenance". The pristine watersheds factor map was compiled from two data sources. Water Quality Standards maps were obtained from the NJDEP, Division of Water Resources. One set of maps depicts Trout Waters (both production and maintenance) and their associated watersheds. The other set of maps shows Category 1 Waters (waters of high quality meriting protection from any measurable change). These data were traced onto copies of the Trout Waters maps. TEGS Watershed Boundary maps, overlaid on the Category 1 Waters maps, were used to determine the watersheds of the Category 1 waters.

actable Water Supply Reservoir Watersheds

Reservoir watersheds information was compiled from several data sources. Potable water supply reservoirs were Identified in the KJEEP "Statewide Water Supply Master Plan for New Jersey." Watershed management areas, both public and private, were identified on a KJEEP Green Acres Program 'Public Open Space and Recreation Areas' map. The USGS Watershed Boundaries map was again used to determine the boundaries of these reservoir watersheds (similar to the Pristine Watersheds factor maps) .

Critical Plant and Wildlife Habitats

map was obtained from NJDEP, Natural Trtrnrte Management and Natural Heritage Program. The data are in a grid-cell format, with each cell representing 340 acres. Although this is not point-specific data, each cell represents potential occurrence of rare species or natural communities as a surrogate for habitat. This indicates that area to be a review zone for further study. This purposeful screening of specific location was done to protect the proprietary rights of NJDEP, and the critical habitats themselves. Public Open Space and Recreation Areas

Public open space and recreation areas are excluded from the Tier system. These areas were identified using maps maintained by the NJDEP, Green Acres Program.

Boundary

Where municipal boundary lines were needed to delineate tier boundaries, a Political Boundary Overlay, prepared by R3DEP, Office of Environmental Analysis, was used.

TXER EELJNEA2TCHS

Tier boundaries were delineated by applying the criteria liffrfyj in the Draft Preliminary State Development and Redevelopment Plan for each tier, to the extent data were available. Mapping of the tiers was done manually, at the quad scale (1:24,000), using the appropriate tier factor maps to determine boundaries. The photoquads were used as base maps throughout this process .

In the absence of tier factor data of sufficient accuracy and detail, the Office of State Planning applied certain assumptions, or mapping conventions, in delineating the Tiers:

- (1) Mapping Thresholds. In recognition of the regional nature of the tier system, tier boundaries were generalized where a direct interpretation of the tier criteria and of tier factor maps would result in the HeiTrai-inn of a tier less than one square mile, or 640 acres, in size (see Attachment C). Public open space and open water areas greater than one square mile were delineated on the tier map but were not classified into any tier. (2) Agricultural Areas. Pending the identification of Tier Six

Agricultural Areas based on local information through the cross-acceptance process, Agricultural Areas were mapped by interpreting photoquads to identify fnnflmvfo existing as of the date of the photoquad. As a general indication of the economic

viability of agricultural areas in relation to developed and developing areas, a "buffer" of Tier 5, Rxurtyvm Reserve was delineated on the 1:24,000 scale preliminary "tier delineation nope to maintain a distance of one mile between areas as tiers 1, 2, 3, or 4 and tier 6A. This buffer was not established for lands idpnt.lfi.flf1 as tier 6B, Environmentally Sensitive Agricultural Areas. This assumption will be superseded by information provided through the cross-acceptance process in consultation with County Agricultural Development Boards. The following sequence was used to delineate the Tiers:

1. Sewer Service Area factor maps were used to distinguish areas in Tiers 1, 2, 3, and 4 from areas in Tier 5, 6, and 7;
2. A density grid (see Attachment C) was applied within sewer service areas to identify those areas with an average population density of fewer than 1,000 persons per square mile, which were designated Tier 4;
3. Areas with an average population density of 1,000 or more persons per square mile based on use of the density grid were designated Tier 3 where they satisfied applicable tier criteria;
4. R> distinguish between Tiers 1 & 2, Tier 1 imnlrtpalltlpB were identified using the New Jersey Office of Management and Budget Municipal Distress List (see Attachment D). A fully developed municipality located in the top one-third of the list meets the criteria for Tier 1. The Municipal Distress List is also used to identify Tier 3 communities (in the top one-third of the list);
5. Factor maps that display environmentally sensitive areas (Pristine Watersheds, Reservoir Watersheds, Rare Species and Natural

Communities) were used to identify Tier 6B and Tier 7 from Tier 5 and Tier 6A;

6. Ma^miai interpretation of photoquads was used to tentatively identify potential agricultural areas to distinguish areas in Tier 6A from areas in Tier 5, and areas in Tier 6B from areas in Tier 7.

ANNUBIS

HAPPJ5 OF EEVELQPABLE, EEVEECFH), & HCEVEDDPABE£ MND

The land Availability Analysis was carried out to determine an estimate of developable, developed, and undevelopable land, by tier, in each county. The photoquads were used as the base map throughout this phase of the project, and were used as the data source for the developed land areas.

To identify developable land, land unavailable for development was first delineated. For the purpose of this study, undevelopable land was defined as:

- solid & hazardous waste sites;
- critical slopes (greater than 15%);
- publicly owned open space lands (including public parks and preserves and military installations);
- stream corridors (streams, lakes, and adjacent wetlands and woodlands);
- coastal wetlands and beaches, and

- transportation corridors.

Undevelopable land includes land which may be developable, but is subject to severe physical and/or regulatory constraints. Excluding these areas from the developable land area provided a conservative minimum estimate of land available for development.

Data Sources

the naps were compiled from both published data sources and by photo-interpretation. The latter is the process whereby the mapper used the photoquad as the data source to determine certain data categories for which published sources are unavailable.

The published data sources were used first to delineate as much of the land area as possible, after which the rest was photointerpreted. Table 1 provides a list of the data sources used. As with the other napping, the data already at 1:24,000 was traced onto the mylar, and data at a different scale was transferred using camion points on both maps.

The following data were photointerpreted after the published sources were used:

- Beach – waterward of dunes
- Developed areas – including golf courses, cemeteries, airports, and transition areas (land already under development)
- Transportation corridors – greater than 4 lane/track rail & highway
- Stream corridors, lakes, freshwater wetlands – when a stream is without a rilflcprnhle wet flood plain, a 100 foot buffer was delineated on either side of the stream (see Attachment C)

TABLE 1

Published Data Sources

Data	Source	Scale
Pinelands	NJDEP, Office of Environmental Analysis	1:24,000
Hackensack Meadowlands	"	
Coastal Wetlands _H		
	NJDEP, Green Acres	
Federal Open Space & Recreation Areas		
Federal Military areas	USGS Stable-base topoquads	
Interstate Parks State	†	
Parks & Forests Fish and	NJDEP, Green Acres	
Game Lands Water	n	
Resource Areas Natural		
Areas		1:63,360
	NJDEP, Environmental Information Inventory (EII)	
Natural Lands Trust	"	
County Parks	NJDEP, Green Acres, EII	
Municipal Parks	"	
Watershed Mgmt. Areas & Private)	Maps from (Public jurisdictional agencies	various scales
Solid & Hazardous Waste Sites	NJDEP, Division of Waste Management	1:24,000
Critical Slopes	USGS Slope Maps	

Reference &

Photointerpretation Sources USGS Stable Base
 Topo Quads 1:24,000 USGS Paper Topo Quads
 (colored) 1:24,000 County maps (Hagstrom)
 various scales

Happing Methodology

Delineations were done on mylar sheets which were registered to the photoquads. Registering was accomplished by tracing the photoquad neat-line comers onto the mylar. In delineating ell of the data categories, a minimum size of 5 acres was used (see Attachment C). This is standard at the scale of 1:24,000. An exception to this were Solid and Hazardous Waste Sites, which were identified and mapped regardless of size.

Each quad was delineated by first using the published data fiources, and then by photointerpreting the other categories. A code was placed in each polygon to identify its characteristic. Those polygons identified as undevelopable were labeled "U" with a letter following to indicate the reason (see Attachment E). The remaining polygons were labeled ^MA^M to indicate that they were available for development, or developable.

All mylars were edge-matched to adjacent mylars, and checked by the project manager. The "A" polygons were then outlined in red on the mylar to facilitate measurement of these areas.

ESTIMATES OF EEVELGPABLE, CEVELCPH3, AM> OCEVEUGABLE LAND

For this phase of the project, electronic planimeters were used to measure the acreage of each polygon, for developed and developable land, and for county Tier totals.

Each quad mylar completed in the previous phase was layered with the Tier map and Political Boundary Overlay for that quad, so that polygons of developed and developable land were measured by Tier, by county. Tracing

paper was overlaid on each quad and planimetered figures were written over the polygon they portal npd to. Acreage determined for each polygon was aggregated for each Tier within each county. The total acreage of each Tier in each county was then planimetered. Figures for undevelopable land were derived by adding the developed and developable land areas, and subtracting them from the total area of each Tier in each county.

Some corrections to the Tier maps (Burlington, Camden, Gloucester, and Salem counties) were incorporated in the county tier totals but the corresponding developed and developable land was not re-planimetered, due to timing of the tier changes and time constraints, this led to discrepancies in the undevelopable land figures for those counties. These areas are currently being re-planimetered and recalculated, and will be updated as soon as this task is complete. These statistics are presented in Attachment F.

ATTACHMENT A Index to New Jersey Quadrangles

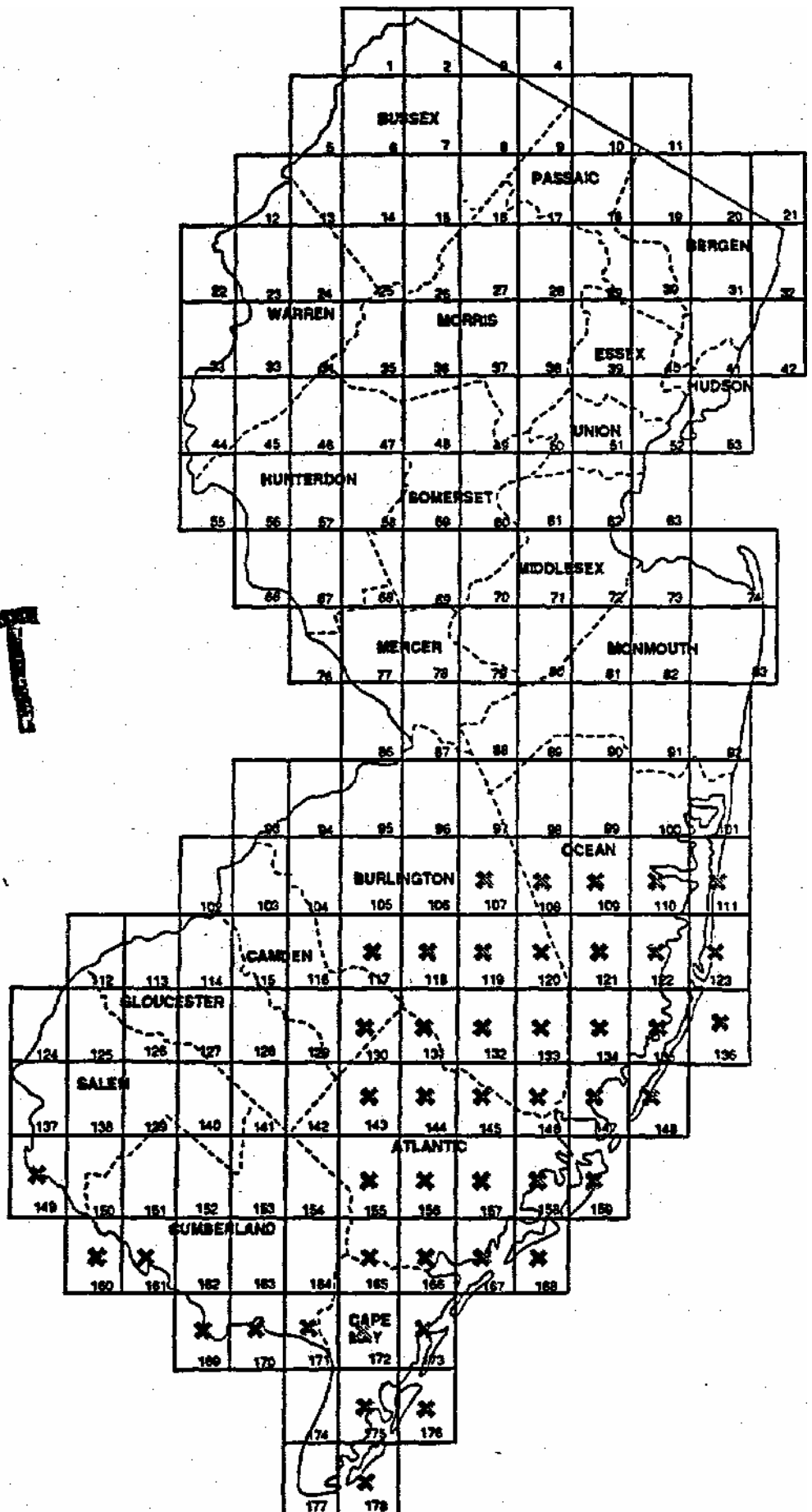
ATTACHMENT B Tier Delineation Criteria

ATTACHMENT C Ifcpping Criteria - Size Grids

ATTACHMENT D Office of Management & Budget
Municipal Distress List (August 29, 1987)

ATTACHMENT E Abbreviation List for Undevelopable Land

ATTACHMENT F Estimates of Developable, Developed, and
Undevelopable land by Tier (in acres)



DRAFT

*What do
X's mean?*

INDEX TO NEW JERSEY

1:24,000

QUADRANGLES

a?

TITO EELJNEATICK CRITERIA FOR THE ERAFT

FRELJHINAKY STATE EEVELCRQ9XT AH) RHDEVEUTMHt EUM

Tier 1: Redeveloping Cities and Rnhnrfrp

Redeveloping Urban and Suburban Areas are defined by municipal boundaries that satisfy criteria 1, 2, and 3 below:

1. The area is a fully developed municipality;
2. The area is a municipality listed within the top one-third of all municipalities on the New Jersey Office of Management and Budget Municipal Distress List (August 29, 1987);
3. The area does not meet the criteria for Suburban and Rural Towns. (Tier 3).

Tier One Urban Centers

The Plan recognizes the special needs of older urban centers, which are the most distressed municipalities in the state, qualify for the "urban center" designation when they meet the following FMi*-nnai criteria:

1. Classified as Urban level 1 on the New Jersey Office of Management and Budget Distress List; and

2. Among the first 50 municipalities on the New Jersey Office of Management and Budget Municipal Distress List.

which currently meet these criteria are the following:

1. Camden
2. Newark
3. Jersey City
4. Trenton
5. Paterson
6. Union City
7. Passaic Cty
8. Elizabeth
9. Perth Jtafcoy
10. New Brunswick
11. Asbury Park
12. East Orange
13. PI a infield
14. Atlantic City
15. Woodbury
16. long Branch

Tier 2; Stable Cities and Suburbs

The boundary of Stable Cities and Suburbs shall define an area which satisfies criteria 1, 2, and 3 below:

1. The municipality in which the area is located is within the bottom two-thirds of all municipalities on the New Jersey Office of Management and Budget Municipal Distress List;
2. The area includes resident populations, together with neighboring non-residential development, corresponding to an average residential population density of 1,000 or more persons per square mile;
3. The area is adjacent to an area in a neighboring municipality classified as Redeveloping Cities and Suburbs (Tier 1) or Stable Cities and Suburbs (Tier 2) .

Tier 3; Suburban and Rural Towns

The boundary of a Suburban and Rural Town shall define an area which satisfies criteria 1, 2, 3, and 4 below:

1. The area is a traditional center of population which may consist of adjacent parts of more than one municipality, containing a resident population currently less than 60,000;
2. a. The area is separated from the nearest tier 1, 2, or 3 areas by at least two (2) miles; or
b. The municipality in which the area is located is within the top one-third of all municipalities on the New Jersey Office of Management and Budget Municipal Distress Index and includes substantial areas of land available for future development;
3. The area is currently included in an existing or planned public sewer service area;
4. The area includes sufficient developable land and redevelopable sites to accommodate a variety of housing and economic development opportunities.

4: Suburbanizing Areas

The boundary of a Suburbanizing Area shall define an area which satisfies criteria 1, 2, and 3 below:

1. The area includes resident populations, together with neighboring non-residential development, corresponding to an average residential population density of currently less than 1,000 persons per square mile;

2. Die area is included in an existing or planned public sewer area;
3. Die area is adjacent to, and shares access to public fficilitiRB and services with, tier 1, 2 or 3 areas.

Tier 5: Future Suburbanizing Areas

boundary of a future Suburbanizing Area shall define an area which satisfies criteria 1, 2, 3, and 4 below:

1. Die area includes resident population, together with neighboring non-residential development, corresponding to an average residential population density of currently less than 1,000 persons per square mile;
2. a. Die area is not included in an existing or planned public sewer service area; or
b. Die area is in an existing poM Sr sewer service area of limited existing or planned capacity;
3. a. Die area does not meet the criteria for Agricultural Areas (Tier* 6A); or
b. The area includes land in agricultural or forestry use that is to be more suitable *far* development than for the expansion and intensification of agricultural activities based on the application of the Agricultural Land Evaluation and Site Assessment (IESA) system developed by the United States Department of Agriculture/ Soil Conservation Service or of a similar analysis;

4. The area does not include sensitive features characteristic of Environmentally Sensitive Agricultural Areas (Tier 6B) or Environmentally Sensitive Areas (Tier 7).

Tier 6A: Agricultural Areas

The boundary of an agricultural area shall define an area which satisfies all of the criteria below

1. The area primarily encompasses productive agricultural land or woodland currently in agricultural production or forestry, or that has a strong potential for future agricultural production or forestry, based on the application of the I&SA system or of a similar analysis;
2. The area is generally one mile or more from a growth area/ with the exception of suburban and rural towns (Tier 3) and of areas of prime or unique farmland as determined by the United States Department of Agriculture, Soil Conservation Service;
3.
 - a. The area is not included in an existing or planned public sewer service area; or
 - b. The area is in an existing public sewer service area of limited existing or planned capacity or availability to serve future development outside the sewer service area.
4. The area does not include areas of environmentally sensitive features characteristic of Environmentally Sensitive Agricultural Areas (Tier 6B) or Environmentally Sensitive Areas (Tier 7).

Tier 6B: Environmentally Sensitive Agricultural Areas

boundary of an environmentally sensitive agricultural area shall define an area which satisfies all of the criteria below:

1. The area primarily encompasses productive agricultural land or woodland currently in agricultural or forestry production or that has a strong potential for future agricultural production or forestry, based on the application of the IESA system or a similar analysis
2. a. The area is not currently included in an existing or planned public sewer service area; or
b. The area is in an existing public sewer service area of 1 in excess of existing or planned capacity or availability to serve future development outside the area on a cost-effective basis;
3. The area encompasses one or more of the following environmentally sensitive features:
 - a. Pristine waters designated by the New Jersey Department of Environmental Protection as Category I waters and their watersheds, defined by those waters of partial or clarity, color, scenic setting or other characteristics of scenic value, exceptional ecological or recreational significance, exceptional water supply significance, or exceptional fishery resource value, including trout production waters; or
 - b. Trout production and trout maintenance waters and their watersheds, as designated by the New Jersey Department of Environmental Protection; or
 - c. Watersheds of existing or planned public potable water supply reservoirs; or

- d. Habitats of populations of endangered or threatened plant or animal species/ as determined by the New Jersey Department of Environmental Protection.

Tier 7: Environmentally Sensitive Areas

The boundary of an Environmentally Sensitive Area shall define an area which satisfies criteria 1, 2, and 3 below:

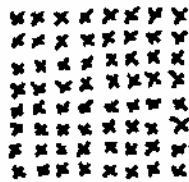
1. The area includes residential populations, together with neighboring non-residential development, corresponding to an average residential population density of less than 1,000 persons per square mile;
2. The area encompasses one or more of the following environmentally sensitive features:
 - a. Pristine waters designated by the New Jersey Department of Environmental Protection as Category I waters and their watersheds, defined by those waters of particular clarity, color, scenic setting or other characteristics of scenic value, exceptional ecological or recreational significance, exceptional water supply significance or exceptional fishery resource value, including trout production waters; or
 - b. Trout production and trout maintenance waters and their watersheds, as designated by the New Jersey Department of Environmental Protection; or
 - c. Watersheds of existing or planned public potable water supply reservoirs; or

- d. Habitats of populations of endangered or threatened plant or animal species, as determined by the New Jersey Department of Environmental protection.

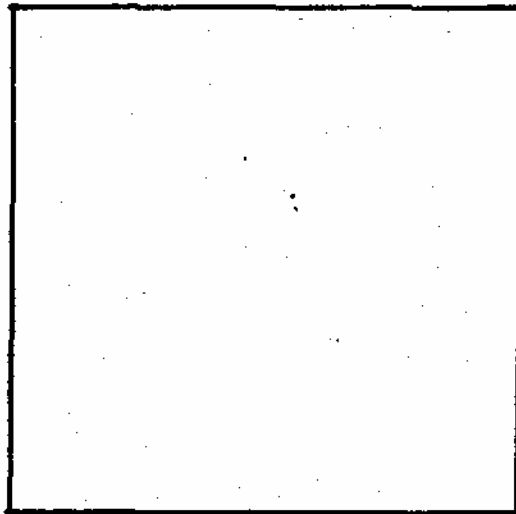
5 acres



1,000 persons
per square mile
(approximately)



stream corridor
200 feet total



one square mile

NOTE: These were originally drawn on mylar so that they could be overlaid onto the photoquad.

MUNICIPAL DISTRESS, New Jersey --(in distress rank order)

Mun. Code	Urban Level	Municipality	Total Rank	Composite Rank	1985		Per Capita Income 1983	Pre-1990 Housing Rank	Sub-Standard Housing 1980	A.F.D.C. 1985		Pop. Change 1970-82	Equalized Tax Rate 85-85 Avg	Equalized Valuation Per Capita 1985							
					Population	Unemployed 1986				% of 1985	Rank										
408	1	CAMDEN CITY	192	1	81,984	11.03191	85,170	3	50.3551	106	2.74912	44	15.16641	1	-20,061	12	4.34	3	87,006.45	5	
714	1	NEWARK CITY	201	2	316,468	10.78891	85,897	5	47.4481	128	4.92632	13	10.01041	2	-14,621	22	5.50	7	88,770.32	7	
906	1	JERSEY CITY	205	3	226,316	8.95151	97,481	26	60.7861	45	4.39241	22	5.97872	11	-15,382	20	3.15	9	114,800.44	35	
1111	2	TRENTON CITY	239	4	91,743	7.59661	47,496	27	63.3201	27	2.66042	50	6.90191	8	-12,451	57	5.06	11	110,703.18	13	
905	2	MOBKEN CITY	329	5	41,941	11.25531	47,913	29	71.3991	13	5.46012	9	3.64001	30	-7,581	101	3.91	20	110,453.22	57	
1800	1	PATERSON CITY	373	6	139,010	8.94321	68,444	7	54.6531	73	4.38162	23	5.57651	12	-3,461	196	4.30	16	111,331.00	16	
1707	4	PENNS GROVE BOROUGH	373	7	3,344	12.65381	64,543	9	49.7651	110	2.65412	51	9.59662	3	-6,491	157	3.43	27	89,592.17	9	
910	1	UNION CITY (HUDSON)	374	8	58,184	8.68531	47,049	16	63.0331	40	3.28942	11	4.36601	23	-1,961	219	3.13	10	113,743.89	21	
1607	1	PASSAIC CITY (PASSAIC)	396	9	54,190	9.09801	47,243	22	59.4491	49	3.94421	27	5.06291	17	-1,601	219	4.30	14	112,628.06	26	
601	1	BRIDGEVIEW CITY	403	10	16,040	12.13591	47,108	17	52.4571	87	1.92072	114	7.80981	6	-7,771	137	3.94	19	110,361.77	11	
1712	5	SALEN CITY	434	11	4,946	12.19911	47,790	35	58.4451	35	1.73452	135	8.11981	4	-9,101	113	3.05	45	111,813.50	10	
912	2	WEST NEW YORK TOWN	486	12	40,801	7.76341	47,732	33	59.1211	51	4.76912	17	2.65651	56	6.631	242	3.02	12	116,772.48	33	
2119	2	PHILLIPSBURG TOWN	541	13	16,873	6.06571	48,371	64	65.7131	25	2.61241	53	2.81041	50	-9,951	91	2.84	93	119,704.39	71	
2904	1	ELIZABETH CITY	562	14	167,310	7.93271	48,542	73	49.4271	112	3.54902	33	3.72941	28	-4,741	180	3.22	44	117,688.89	48	
1216	1	PERTH ANDREW CITY	586	15	37,001	8.06441	48,161	54	55.9301	67	4.80512	15	4.35312	24	-2,361	206	3.12	51	123,307.46	129	
1303	1	ASBURY PARK CITY	594	16	16,442	6.04321	47,196	26	40.8381	189	4.35892	24	8.11951	5	-6,531	232	3.62	5	114,185.92	29	
1214	1	NEW BRUNSWICK CITY	596	17	41,536	6.45061	47,555	28	51.4361	99	3.93942	7	2.95412	47	-8,831	229	3.31	34	119,890.97	74	
705	1	EAST ORANGE CITY	645	18	77,536	7.54431	48,629	48	40.5391	195	3.08432	40	4.63232	7	2,741	240	7.48	2	118,569.37	6	
717	2	ORANGE CITY TWP	613	19	31,563	6.52461	49,156	117	44.6581	157	4.20212	25	4.86012	19	-3,001	201	5.42	8	110,517.42	12	
608	3	LAWRENCE TWP (CAMDEN)	620	20	2,306	10.17961	47,903	13	56.6281	61	4.66062	6	2.68061	35	-6,991	236	2.71	129	123,399.15	109	
328	4	FENBERTON BORO	629	21	1,184	5.62701	49,072	91	50.8021	52	1.99602	168	6.64101	9	-11,761	43	2.72	124	119,451.00	69	
817	4	SMITHSBORO BOROUGH	636	22	2,085	6.16781	48,612	78	74.3591	8	3.27461	36	4.41251	22	-8,831	117	2.44	242	116,738.51	41	
437	2	WOODLYNNE BORO	655	23	2,589	4.75401	47,721	32	61.1511	33	0.79441	305	3.09002	42	-14,511	23	3.99	17	113,246.74	23	
414	2	GLoucester CITY (CAMDEN)	660	24	13,159	5.55171	47,810	36	65.4811	26	1.68581	256	3.23761	36	-10,531	87	2.89	80	114,781.52	34	
902	2	EAST NEWARK BOROUGH	668	25	1,901	11.32081	49,210	56	72.1261	11	2.01442	103	2.26201	63	-1,091	275	3.41	20	128,500.56	168	
604	5	DOMNE TWP	676	26	1,076	12.63711	48,902	12	51.5351	97	6.93722	9	2.77191	53	5.571	294	2.71	127	120,719.26	81	
302	2	BEVERLY CITY	705	27	2,082	5.94431	48,335	61	64.6091	31	1.44792	164	3.50451	33	-7,181	148	2.71	130	118,933.73	44	
901	2	BAYONNE CITY	710	28	63,487	4.36991	110,327	214	60.2891	47	2.60262	54	1.33101	111	-12,721	52	3.75	22	125,371.28	131	
709	2	IRVINGTON TWP	730	29	62,751	4.58921	48,971	101	44.1491	164	2.53522	60	5.17281	16	5,031	280	4.46	13	111,456.78	17	
323	4	HUNY HOLLY TWP	754	30	10,873	5.73241	49,617	148	47.1011	131	1.59101	149	3.75241	27	-14,471	34	2.77	106	110,218.32	54	
911	2	NEENAWKEN TWP	776	31	13,472	4.89041	110,204	204	73.2141	9	3.64962	29	2.32332	62	4,671	244	1.69	23	126,346.90	141	
187	4	EGG HARBOR CITY	776	32	4,659	10.46031	49,965	186	53.6561	74	2.56412	38	4.55831	20	8,231	317	3.14	48	118,277.44	95	
2012	1	PLAINFIELD CITY	785	33	66,076	7.34071	49,469	138	45.9581	140	2.83072	102	3.18261	40	-1,681	220	3.30	32	119,109.50	62	
516	4	WOODBINE BORO	789	34	2,728	6.33331	49,013	1	43.4911	169	3.39012	109	4.50881	21	3,921	274	2.48	224	110,201.17	10	
606	5	GREENWICH TWP (CAMDEN)	829	35	956	10.27401	49,133	118	65.2781	28	4.48182	21	2.61511	38	-0,731	230	2.62	162	131,063.61	197	
2117	5	OXFORD TWP	835	36	1,420	5.12821	48,364	63	45.8581	24	4.57572	20	4.67572	201	-6,541	150	2.80	102	124,193.52	120	
119	3	PLEASANTVILLE CITY	847	37	14,404	8.28921	48,142	52	45.4601	144	1.67792	138	3.13802	41	2,631	262	2.94	74	122,097.44	94	
814	3	PANLSBORO BOROUGH	843	38	6,670	6.27712	48,149	53	55.2451	70	0.89422	279	4.98451	18	-17,391	19	2.42	248	121,036.45	85	
1371	3	KEANSBURG BOROUGH	860	39	10,510	7.36741	47,417	25	42.3311	180	1.26241	195	3.54631	32	8,211	316	3.23	43	126,188.97	39	
908	2	NORTH BERGEN TWP	890	40	47,152	4.88611	49,870	167	50.3871	105	3.82052	28	1.31491	112	-1,231	222	3.94	10	129,846.78	183	
102	1	ATLANTIC CITY	928	41	37,140	8.96061	48,179	55	53.3371	71	2.37181	75	6.51651	10	-22,401	8	2.78	135	1147,360.19	546	
609	5	MAURICE RIVER TWP	934	42	5,231	12.11741	41	66,321	6	42.9331	174	4.87242	14	1.28081	114	39,751	463	2.73	110	114,446.31	32
904	2	HARRISON TOWN (HUDSON)	946	43	12,589	7.82751	49,032	107	61.1741	44	2.53412	61	1.64431	89	4,591	303	2.62	165	127,190.85	154	
822	1	WOODBURY CITY	948	44	16,180	4.91172	110,282	212	51.4161	94	1.85192	171	2.78901	32	-17,961	16	2.51	203	122,977.68	104	
602	4	COMMERCIAL TWP	976	45	4,884	17.29442	46,832	11	34.4201	249	9.46572	3	5.46681	13	33,191	430	2.47	228	112,308.50	20	
1325	1	LONG BRANCH CITY	991	46	29,240	5.63001	49,480	149	39.1221	211	1.90412	110	3.49521	34	-7,981	133	2.90	88	127,909.17	163	
907	2	BROOKLYN BORO	992	47	2,086	5.81281	48,779	84	63.7431	36	0.25002	304	2.54071	60	-27,321	6	2.83	100	122,797.42	101	
1921	4	SUSSEX BOROUGH	1011	48	2,360	4.76192	48,276	83	56.5681	62	6.78692	5	1.82201	78	15,801	369	2.56	184	118,120.58	53	

MUNICIPAL DISTRESS, New Jersey --(in distress rank order)

Mun. Code	Urban Level	Municipality	Total Rank	Composite Rank	1985 Population	Percent Unemployed		Per Capita Income		Pre-Housing		Sub-Standard		A.F.D.C.		Pop. Change 1970-85	Pop. Rate of Change 1970-85	Equalized Tax Rate 83-85 Avg	Equalized Valuation Per Capita 1986		
						1986	Rank	1983	Rank	2 1980	Rank	2 1980	Rank	1 of 1985	Rank						
221	2	GARFIELD CITY	1029	49	26,393	7.0285	59	89,440	137	50.1831	56	3.16831	30	0.76341	102	-13.631	41	2.22	334	429,793.43	180
1312	4	ENGLISHTOWN BOROUGH	1039	50	1,007	4.30291	230	88,024	47	56.3221	45	2.58621	55	3.03591	46	3.721	272	2.65	150	129,015.55	174
610	1	MILLVILLE CITY	1059	51	25,905	8.05191	41	88,744	82	30.5301	215	1.53111	155	3.54831	31	19.371	393	2.87	92	917,933.64	50
411	4	SMILTON BOROUGH	1065	52	597	7.04231	57	87,973	85	56.4221	44	0.93021	274	0.50251	235	4.191	200	2.91	83	910,081.27	27
1390	3	INWON BEACH BORO	1066	53	4,393	5.93391	95	88,017	46	43.2991	149	1.22311	202	1.17321	127	-1.221	224	2.81	101	824,299.29	122
812	3	NATIONAL PARK BORO	1068	54	3,440	8.92731	31	87,370	24	36.5311	236	0.62561	352	1.24711	110	-7.361	142	2.70	137	816,130.68	20
403	5	DEERFIELD TWP	1080	55	2,627	8.30891	37	87,916	41	33.5951	240	1.36211	174	2.13171	68	6.621	394	2.60	171	917,066.04	45
1307	3	BRADLEY BEACH BORO	1105	56	4,802	6.72861	47	89,243	124	50.7751	102	2.58321	56	2.17121	66	17.271	375	2.95	77	434,486.32	238
1610	2	PROSPECT PARK BORO	1113	57	5,225	6.10741	87	89,570	143	71.1541	14	2.16721	93	0.74641	104	0.951	246	2.42	249	822,330.64	97
1706	5	SLOHAMS TWP	1120	58	1,859	7.48221	48	88,696	79	42.8111	175	1.12361	220	1.49031	74	-10.971	77	2.36	271	829,292.62	176
405	5	FAIRFIELD TWP (CLAM.)	1134	59	5,816	15.34101	3	96,510	0	21.7411	369	2.07781	99	3.76531	26	16.551	372	2.45	243	811,095.98	14
2014	2	ROSELLE BOROUGH	1135	60	20,492	6.12851	70	110,435	232	37.3641	220	1.38531	171	1.10671	136	-0.301	127	3.09	52	823,967.37	119
801	3	CLAYTON BOROUGH	1136	61	6,053	9.42791	25	87,891	30	30.3921	279	1.86991	140	2.05541	72	16.181	370	2.62	166	917,088.63	46
907	2	KEARNY TOWN	1142	62	35,252	5.50431	119	99,073	148	67.1081	21	2.0901	98	1.02411	144	-6.211	162	2.58	170	835,692.65	252
1372	3	KEYPORT BOROUGH	1143	63	7,393	6.01041	209	89,000	185	45.7101	143	2.51631	62	1.44731	100	2.611	258	2.64	152	823,602.70	114
309	2	BELMONT TWP	1144	64	3,639	4.97241	156	99,124	112	52.4751	86	1.14501	215	0.65931	205	-12.461	56	2.60	170	826,512.40	144
614	1	WINDLAND CITY	1150	65	53,433	7.60831	43	88,388	38	26.8081	336	1.44981	163	3.26581	35	12.731	353	2.84	97	919,126.67	43
1201	2	CARTERET BOROUGH	1153	66	19,764	5.60341	114	110,425	230	30.1751	281	1.78021	127	1.77601	83	-14.501	33	2.74	114	828,758.20	171
1220	2	SOUTH ANDY CITY	1220	67	7,922	5.16401	143	89,738	156	39.8711	40	1.96811	110	1.35071	108	-15.161	29	2.67	412	827,093.50	151
701	2	BELLEVILLE TWP	1171	68	36,077	4.97071	157	110,453	233	46.9891	134	1.77011	129	0.93691	155	-4.121	196	3.39	50	826,842.67	147
2007	2	HILLSIDE TWP	1203	69	21,533	6.45521	75	110,407	228	40.2861	123	1.26451	191	1.01701	147	-0.401	234	3.00	55	826,906.67	150
806	3	GLASSBORO BOROUGH	1215	70	14,314	6.28191	82	87,770	141	24.6401	340	0.94081	271	2.80841	51	10.641	333	3.05	60	816,780.76	42
305	2	BURLINGTON CITY	1218	71	10,468	5.37741	128	88,930	100	52.7001	83	1.78091	126	2.24491	64	-12.041	50	1.10	541	825,031.78	126
1513	4	LAKEHURST BOROUGH	1220	72	3,055	4.83761	168	87,170	18	20.6671	386	2.29891	79	1.44031	101	15.681	367	2.94	79	813,022.14	22
1223	2	SOUTH RIVER BOROUGH	1229	73	13,577	4.70991	184	110,000	261	41.6651	184	2.25321	85	0.70711	193	-12.001	44	2.96	73	829,790.19	179
412	2	COLLINGSWOOD BORO	1236	74	15,724	3.87151	322	110,390	225	51.3401	100	1.09201	232	1.24011	120	-9.751	103	3.07	57	820,515.00	77
1715	4	WOODSTOWN BOROUGH	1240	75	3,251	5.05051	150	110,880	273	49.9221	109	1.23841	200	2.38851	61	3.631	270	2.85	94	820,900.99	83
1705	5	HANNINGTON TWP	1244	76	1,694	5.35071	130	89,293	126	46.9141	133	5.18981	12	0.41321	269	-11.451	69	2.46	230	830,012.09	275
1701	5	ALLDWAY TWP	1270	77	2,715	8.52461	35	88,816	66	45.7361	142	2.11821	97	0.99451	151	6.471	301	2.16	371	823,743.63	107
401	2	AUGUBON BORO	1280	78	9,438	3.63711	324	89,827	177	62.2931	43	0.82121	295	0.51921	229	-12.631	54	3.13	50	823,336.24	100
821	2	METZVILLE BOROUGH	1297	79	4,691	4.36241	220	89,022	106	43.9461	165	0.57141	370	2.15311	67	-9.261	112	2.55	191	819,489.04	68
2103	4	DELVIDERE TOWN	1300	80	2,432	2.94121	443	110,622	287	69.3691	18	5.68361	31	0.69901	195	-10.631	86	2.05	96	829,851.15	104
702	2	BLOOMFIELD TWP	1305	81	47,765	4.76411	176	111,491	306	35.8231	68	1.29411	187	0.64901	209	-0.201	130	3.40	79	831,335.33	200
1995	4	MENTON TOWN	1308	82	7,513	4.20101	240	99,577	184	46.8431	139	2.87531	92	0.98501	152	2.961	263	2.52	203	824,901.08	125
2121	4	WASHINGTON BOROUGH	1308	83	6,382	4.14101	240	89,622	149	51.9551	92	2.00561	106	0.76701	181	7.391	309	2.67	91	825,456.92	132
426	2	OAKLYN BORO	1312	84	4,207	5.37491	376	110,509	237	56.2401	66	0.99011	253	1.33111	110	-9.061	116	3.09	59	822,137.35	95
1702	4	ELMER BOROUGH	1316	85	1,562	4.23081	402	89,328	151	72.1651	16	1.57691	172	3.07301	44	-1.801	215	2.39	299	822,908.97	103
1315	4	FRESHFIELD BOROUGH	1342	86	9,986	4.58331	193	99,723	154	40.6691	192	1.09861	230	1.95271	75	-5.301	172	2.63	157	820,530.57	169
1340	1	RED BANK BORO	1347	87	11,821	4.71151	183	111,584	315	52.7641	91	1.01841	189	2.12331	70	-7.991	134	2.76	109	830,665.27	203
815	3	PITMAN BOROUGH	1350	88	9,491	4.80411	273	110,001	190	51.4641	90	0.96451	259	0.83241	167	-7.471	143	2.60	142	820,358.41	70
450	3	RUMMENED BORO	1351	89	9,341	4.17081	204	88,705	80	22.6881	360	0.77291	300	0.71731	191	-10.831	81	2.99	69	818,170.26	50
2102	3	ALPHA BOROUGH	1353	90	2,561	5.12821	144	110,143	201	52.3421	89	1.21091	204	0.78091	175	-9.471	147	2.20	309	824,866.20	124
1409	1	DOVER TOWN	1356	91	14,391	4.92761	163	110,627	249	51.5611	96	2.35201	73	1.11181	135	-4.311	185	2.30	261	830,516.52	191
303	2	BONCANTOWN CITY	1367	92	4,343	4.90701	163	110,924	279	61.1531	39	0.91891	276	1.05871	139	-3.231	199	2.50	179	821,857.09	91
426	2	MERCANTVILLE BORO	1367	93	3,950	3.26511	395	111,519	311	70.5991	15	1.10021	220	1.00841	137	-10.731	83	3.26	60	827,495.17	150
404	3	BERLIN TWP	1397	94	5,400	5.91581	100	88,850	81	19.8041	398	0.69201	331	1.02041	145	-3.501	194	3.04	53	821,435.01	87
1714	4	UPPER PITTSBORO TWP	1403	95	3,197	5.08741	148	88,537	76	39.4621	202	2.77781	43	1.47011	98	10.851	338	2.00	410	821,374.84	86
423	3	MAGNOLIA BORO	1413	96	4,833	4.72841	230	88,995	104	21.4941	376	0.28741	490	1.40981	97	-17.991	15	3.24	62	810,083.46	51

MUNICIPAL DISTRESS, New Jersey --(in distress rank order)

Mun. Code	Urban Level	Municipality	Total Rank Composite		1985 Population	Percent Unemployed 1986	Per Capita Income 1983	Pre-1990 Rank	Pre-1980 Rank	Sub-Standard Housing 1980 Rank	1987 A.F.D.C. % of 1985		Pop. Rate of Change 1970-85 Rank	Equalized Tax Rate 83-85 Avg Rank	Equalized Valuation Per Capita 1986 Rank						
			Score	Rank							Pop.	Rank									
1901	4	ANDOVER BOROUGH	1413	97	841	8.19332	39	89,930	170	44.0521	35	4.62051	18	0.23701	338	3.443	264	2.23	333	630,032.42	184
1334	3	NEPTUNE TWP	1420	98	28,483	5.22011	137	89,617	147	32.9161	258	1.71131	136	1.62021	90	3.672	271	2.49	221	827,735.19	140
340	4	WRIGHTSTOWN BORO	1423	99	3,238	11.87001	12	83,101	2	8.9012	523	1.10001	226	1.51331	95	19.092	307	2.59	174	16,025.56	4
1713	3	CARNEYS POINT TWP	1424	100	8,671	5.75921	104	89,544	142	27.8131	304	2.10261	90	1.14171	130	23.592	417	2.56	183	418,102.97	52
2013	2	RAHWAY CITY	1428	101	26,454	5.18501	142	811,124	286	35.2421	241	1.44151	167	0.81701	169	-8.401	126	2.91	81	432,276.74	216
1203	2	BUELLEN BOROUGH	1433	102	6,379	3.68161	319	910,930	280	55.7751	49	3.59451	32	0.39191	281	-9.802	99	2.79	133	432,065.01	220
1909	4	HARDBURG BOROUGH	1433	103	1,797	3.70751	313	89,129	113	44.4791	140	1.09031	234	1.22431	121	-1.261	221	3.04	64	431,843.23	207
420	3	LAUREL SPRINGS BORO	1438	104	3,222	2.54021	489	810,330	215	48.3831	121	0.84631	209	1.75521	84	-13.411	44	2.99	47	825,167.42	127
421	3	LAINSIDE BORO	1439	105	3,027	5.77051	102	80,911	97	18.7161	413	0.63461	350	3.17151	30	9.792	326	3.34	33	820,714.51	80
231	2	LOD1 BORO	1447	106	23,477	5.86411	99	810,385	224	25.2501	331	1.94591	111	0.77931	176	-4.701	154	2.44	151	431,246.47	199
612	8	STON CREEK TWP	1451	107	1,442	5.46341	124	87,914	42	42.9791	173	2.35551	74	0.27741	334	37.331	456	2.58	181	819,493.79	67
1200	4	JAMESBURG BOROUGH	1455	108	4,402	4.81541	149	810,200	205	24.7851	318	1.02111	240	1.49931	96	-3.971	191	2.76	111	423,270.39	117
104	4	BUNEA BOROUGH	1469	109	3,777	4.40441	212	80,876	92	28.9931	290	1.81951	124	3.15041	39	15.051	343	2.59	257	821,988.62	92
514	1	WILMIDD CITY	1475	110	5,044	13.46721	5	87,194	19	50.3431	107	1.91301	117	3.19431	15	22.731	411	2.31	249	802,936.96	502
419	3	HI-HELLA BORO	1483	111	1,244	5.19881	139	89,808	87	10.8571	501	1.10291	216	2.85271	97	4.102	277	2.56	187	811,994.31	19
411	3	CLEMENTON BORO	1489	112	5,885	4.05221	243	88,922	98	31.8601	265	0.81831	299	2.89411	40	29.231	440	3.26	39	815,880.63	37
404	3	BELLHAMR BORO (CAMDEN)	1493	113	13,526	4.96991	158	88,883	93	8.9281	524	0.48381	440	1.39731	104	-13.391	47	3.22	46	820,380.70	79
330	2	RIVERSIDE TWP	1496	114	7,984	3.24081	401	80,904	95	38.8271	53	1.06601	243	1.00181	149	-7.041	150	2.23	329	820,485.30	74
2021	3	WINFIELD TWP	1498	115	1,720	5.58601	115	810,827	194	14.1831	454	0.28651	491	0.52331	228	-21.251	10	12.01	1	83,171.99	3
431	3	SOMERDALE BORO	1516	116	5,887	3.75801	277	89,241	123	16.1941	432	0.57781	367	1.80061	79	-9.571	186	3.15	47	818,367.46	54
427	2	PENNSAUKEN TWP	1521	117	34,255	1.00091	304	89,838	163	34.1371	253	0.53371	378	1.64851	91	-5.881	164	3.04	42	825,649.21	134
824	8	WOOLWICH TWP	1523	118	1,201	5.33331	132	89,917	174	48.9851	116	4.61541	19	0.83261	144	4.712	283	2.27	313	841,623.72	320
425	2	MOUNT EPHRAIM BORO	1524	119	6,784	4.51511	200	89,352	132	28.0991	302	0.31511	473	0.71041	192	-14.921	32	2.80	103	821,525.53	88
218	3	FAIRVIEW BOROUGH	1527	120	10,427	5.45421	125	810,186	203	43.8181	166	3.17351	57	0.52751	226	-2.531	204	2.25	323	835,015.89	243
1711	5	QUINTON TWP	1534	121	2,871	4.44931	205	88,452	69	28.8981	295	2.01211	105	1.42811	103	11.942	346	2.21	339	819,746.56	72
113	8	HAWMONTON TOWN	1542	122	12,340	8.40241	34	89,945	183	40.7811	191	1.47681	160	1.34521	109	7.441	311	2.14	379	828,928.53	173
1529	3	SOUTH TONS RIVER BORO	1543	123	3,895	6.29481	81	84,584	10	5.2011	358	0.45871	415	3.80091	43	-2.161	210	2.56	186	816,371.01	40
314	3	FIELDSBORO BOROUGH	1543	124	602	5.49451	122	88,419	67	43.1141	152	0.51811	399	0.64451	203	-2.111	211	2.26	321	819,604.34	64
713	2	MONTCLAIR TWP	1551	125	38,449	3.85111	227	815,583	493	69.0451	19	1.95501	113	0.79651	173	-12.201	61	3.39	31	846,483.99	344
1401	2	BOONTON TOWN	1558	126	8,464	4.98121	133	811,704	328	56.8371	60	2.20521	87	0.61901	310	-8.611	120	2.52	201	839,260.81	297
1906	4	FRANKLIN BOROUGH	1565	127	4,382	4.78811	173	89,299	127	53.3041	77	0.37501	452	0.45641	235	3.451	267	3.04	61	827,194.11	153
407	3	MOPENELL TWP (CONJ.)	1574	128	4,406	7.03871	58	89,148	116	26.4981	387	0.95171	264	0.77171	180	16.981	340	2.58	180	817,850.57	49
1811	2	HANVILLE BORO	1581	129	18,952	3.56081	338	810,595	234	29.4501	286	2.20311	88	0.40181	277	-15.941	27	2.71	128	831,447.29	201
250	2	RIDGEFIELD PARK TWP	1585	130	12,392	4.49811	202	812,296	374	43.2441	29	1.84961	122	0.29861	324	-11.421	70	2.61	168	839,219.41	296
1194	4	NIGHTSTOWN BOROUGH	1588	131	4,494	5.17101	408	812,210	343	44.3881	162	0.95881	243	1.17941	125	-17.251	20	3.14	49	831,159.53	198
410	5	CHESTERLAURET BORO	1590	132	1,441	7.13281	54	87,274	23	9.4381	519	0.60481	355	4.08291	25	104.871	544	3.30	37	814,345.10	31
123	5	MEYHOUTH TWP	1594	133	1,330	9.81881	23	89,390	134	34.6321	248	4.10371	26	0.90231	158	35.271	451	2.14	390	820,210.76	164
1347	3	SOUTH BELMAR BORO	1595	134	1,514	3.98341	334	89,616	144	50.5941	104	1.84961	122	1.91551	77	1.411	249	2.79	183	840,331.31	303
804	5	ELK TWP	1598	135	3,373	5.76191	103	88,478	71	27.7331	308	2.47241	49	0.83011	168	26.401	420	2.87	414	819,417.96	65
117	5	HALLAZA TWP	1612	136	5,346	6.52911	73	89,185	111	28.4431	299	1.90261	119	1.79571	80	57.631	498	2.31	296	826,136.04	134
301	5	MASS RIVER TWP	1616	137	1,394	0.99471	20	88,884	94	40.5131	194	3.38411	34	0.43041	285	71.041	513	2.43	244	834,635.40	240
1403	3	MALEDON BOROUGH	1621	138	6,789	4.69841	186	810,352	219	16.8741	39	2.25991	83	0.41241	270	0.331	240	2.16	374	830,292.29	180
810	3	RAHWAY TWP	1627	139	9,805	5.12651	144	89,514	141	23.7691	349	0.81661	300	0.86411	163	-0.391	237	2.53	198	822,044.81	93
805	5	FRANKLIN TWP (ELMO.)	1628	140	13,436	6.90821	62	88,123	50	21.7001	370	1.55671	153	1.45201	99	61.601	490	2.23	331	819,849.65	73
213	1	ENGLEWOOD CITY	1632	141	23,403	4.88891	144	814,049	430	44.4941	136	1.58841	132	1.26891	115	-4.001	143	3.22	43	852,830.61	403
204	2	DOGOTA BOROUGH	1639	142	8,143	4.31781	278	811,950	346	45.2381	30	1.17481	210	0.23331	343	-9.121	114	2.74	137	833,716.62	232
351	2	RIVERTON BORO	1647	143	2,901	1.90481	330	812,897	400	71.5931	12	2.57921	57	0.93871	223	-12.631	53	2.48	223	826,947.53	149
1346	3	BRUNSWICK TWP	1651	144	1,153	7.47221	49	88,120	51	13.1501	472	0.44791	240	0.80001	353	-8.951	227	3.54	6	813,649.34	23

MUNICIPAL DISTRESS, New Jersey --(in distress rank order)

Mun. Code	Dist. Level	Municipality	Total Rank	Composite Rank	1985 Population	Percent Unemployed		Per Capita Income 1983	Per Capita Income 1985	Per Capita Income 1986	Sub-Standard Housing % 1980	1987 A.F.D.C. % of 1985		Pop. Rate of Change 1970-85	Equalized Tax Rate 83-85 Avg	Equalized Valuation Per Capita 1986					
						1985 Rank	1986 Rank					1987 Rank	1988 Rank								
403	3	BARRINGTON BORO	1652	143	7,290	4.060%	275	\$10,250	209	19,300	405	0.5630	374	0.6213	212	-13.9%	37	3.32	35	\$25,055.00	103
1521	3	OCEAN GATE BORO	1655	144	1,417	4.044%	267	\$8,325	60	40,000	201	2.4130	-70	2.6112	59	31.00	443	3.31	297	\$36,309.71	250
1332	4	TUCKERTON BORO	1656	147	3,651	6.769%	64	\$8,340	62	27,902	307	0.9410	270	3.0533	45	37.44	457	2.49	215	\$33,934.61	230
1011	4	FRENCHTOWN BORO	1670	140	1,529	4.072%	250	\$10,343	220	66,770	23	1.6667	141	0.4570	254	4.00	294	2.35	377	\$32,134.71	213
413	5	UPPER MERFIELDS TWP	1683	149	6,994	8.601%	33	\$6,979	103	22,343	345	0.6410	344	2.8882	89	3.20	291	2.16	373	\$24,243.43	121
902	3	DEPTFORD TWP	1686	150	24,056	5.395%	127	\$9,230	121	13,131	673	0.6733	339	1.0260	143	-0.73	231	2.44	158	\$22,299.45	96
405	3	BERLIN BORO	1693	151	3,000	6.575%	194	\$10,623	240	26,720	319	0.9509	265	2.1259	61	17.67	376	2.99	84	\$26,308.60	130
413	3	BLOSSBOM BORO	1694	152	2,620	4.213%	239	\$9,170	110	25,194	332	0.6402	349	0.7252	189	-0.53	233	2.05	95	\$26,309.89	139
1004	2	BOUND BROOK BORO	1695	153	9,331	2.916%	444	\$11,326	296	46,500	135	1.9922	167	0.6859	190	-10.71	84	2.51	264	\$37,005.37	223
1710	5	PITTSBORO TWP	1690	154	7,719	5.643%	119	\$7,927	43	23,076	334	1.6601	143	1.1531	129	67.13	509	2.15	300	\$16,703.84	43
316	3	HAINESPORT TWP	1690	155	3,360	5.583%	104	\$8,929	99	29,949	283	1.1130	223	0.4454	259	12.64	352	2.64	156	\$14,991.79	210
315	3	FLORENCE TWP	1700	156	9,269	3.820%	300	\$9,817	360	49,003	115	0.8067	292	0.9270	156	0.20	310	2.45	234	\$26,053.04	133
339	5	WOODLAND TWP	1711	157	1,987	3.270%	391	\$5,766	4	13,974	650	13.960	1	0.4529	256	-2.21	200	2.10	355	\$16,164.64	30
410	2	HADDON HEIGHTS BORO	1716	158	8,214	3.607%	434	\$11,620	320	47,761	127	0.9491	266	0.4018	270	-12.29	160	2.96	74	\$27,639.33	137
437	3	STRATFORD BORO	1720	159	7,730	3.940%	210	\$9,000	170	9,950	513	0.5047	403	1.1643	120	-21.13	11	2.77	100	\$22,553.67	99
436	3	WINSLOW TWP	1722	160	23,711	4.401%	213	\$8,535	74	13,201	470	2.4701	64	2.0539	73	111.67	540	2.50	210	\$19,690.27	70
212	2	EAST RUTHERFORD BORO	1723	161	7,885	6.201%	84	\$10,280	211	52,024	82	2.3033	78	0.5594	220	-7.06	136	1.50	319	\$50,526.41	393
1010	1	SOMERVILLE BORO	1725	162	11,603	2.969%	438	\$12,290	373	41,304	187	1.2616	196	1.2066	123	-15.01	30	2.04	98	\$30,240.24	200
1304	3	ATLANTIC HIGHLANDS BORO	1727	163	5,050	4.135%	244	\$11,494	307	50,206	140	1.0793	239	0.6524	207	-0.06	220	2.70	134	\$35,893.22	253
402	2	AUGUBIN PARK BORO	1729	164	1,208	3.287%	390	\$8,200	57	7,143	538	0.2008	520	0.7762	170	-13.67	40	5.84	4	\$2,971.49	2
1206	3	HELVETIA BORO	1730	165	973	4.083%	257	\$9,399	135	43,034	172	1.8576	120	0.3003	320	1.00	253	2.40	256	\$32,201.57	217
1314	4	FARMINGDALE BORO	1733	166	1,341	5.197%	140	\$10,613	243	37,902	222	0.3513	300	3.7204	29	16.01	373	2.64	154	\$30,476.04	190
435	5	WATERFORD TWP	1734	167	9,396	5.091%	147	\$8,394	65	21,306	377	0.7373	319	1.3091	113	130.69	553	2.98	71	\$21,642.23	89
420	3	PIKE HILL BORO	1736	168	9,100	5.316%	133	\$8,867	90	16,912	420	0.4913	409	1.7347	85	77.47	520	3.25	61	\$14,171.97	30
1207	2	HIGHLAND PARK BORO	1750	169	13,199	4.350%	221	\$13,151	414	39,054	204	0.8702	288	0.4319	264	-0.24	129	3.34	34	\$30,908.83	194
329	3	PENBERTON TWP	1751	170	31,016	6.510%	72	\$7,616	30	7,151	537	1.0831	230	1.9345	76	57.01	496	2.35	270	\$13,525.35	24
225	1	HACKENSACK CITY	1755	171	35,294	4.783%	174	\$12,642	397	29,799	280	2.4544	66	0.9010	199	-1.98	212	2.19	104	\$43,574.93	350
716	2	BUTLEY TWP	1758	172	29,216	6.317%	129	\$12,265	370	49,700	111	0.7317	320	0.4107	271	-0.45	123	3.26	30	\$39,059.50	214
1017	4	LAMBERTVILLE CITY	1763	173	3,926	2.748%	463	\$10,446	234	76,811	6	1.9790	109	1.0490	130	-9.33	90	2.04	420	\$37,127.06	267
1014	2	NORTH PLAINFIELDS BORO	1763	174	10,212	3.776%	304	\$12,342	376	36,823	231	1.0106	250	0.4063	274	-16.44	20	2.74	115	\$30,379.75	189
1923	5	WALPACK TWP	1764	175	100	1.136%	350	\$10,906	277	44,444	161	3.1250	39	1.0000	150	-73.96	1	0.70	363	\$11,320.59	15
2015	3	ROSELLE PARK BORO	1771	176	13,263	3.629%	375	\$11,460	305	45,377	147	1.1038	237	0.2413	333	-7.10	199	2.90	87	\$29,675.54	170
1500	5	ENGLEWOOD TWP	1786	177	1,054	6.779%	175	\$7,036	15	38,534	214	1.8190	156	1.4205	104	20.31	437	2.10	361	\$41,912.31	324
504	5	DEARNS TWP	1794	178	4,547	9.290%	26	\$6,440	60	32,931	237	2.7279	67	0.6590	204	72.50	514	1.01	403	\$30,692.17	193
1019	3	SOUTH BOUND BROOK BORO	1797	179	4,220	3.354%	382	\$9,939	181	26,479	320	1.7340	134	0.2607	337	-6.74	135	2.69	140	\$26,795.12	146
1314	3	LAKEWOOD TWP	1799	180	39,693	6.929%	162	\$9,130	115	11,483	497	1.1703	208	3.1744	37	57.37	497	2.69	130	\$26,626.03	143
813	4	NEWFIELD BORO	1799	181	1,560	3.037%	431	\$8,800	86	63,470	170	0.3731	054	2.7423	54	9.45	293	2.51	209	\$22,820.27	102
1014	2	BARTON BORO (SOMERSET)	1802	182	6,019	2.319%	500	\$10,594	243	52,323	90	3.2664	35	0.4901	239	-10.04	93	2.56	103	\$34,492.94	413
1015	4	HAMPTON BORO	1803	183	1,493	3.460%	354	\$9,950	180	52,432	85	1.1804	207	0.1560	300	22.29	400	2.63	150	\$23,233.43	104
312	3	WEST CAPE MAY BORO	1809	184	1,230	9.549%	24	\$8,720	81	44,963	155	1.1236	221	1.2193	122	22.39	610	1.72	494	\$40,063.50	302
105	5	ONEA VISTA TWP	1811	185	7,342	9.960%	93	\$7,942	44	20,276	309	1.3749	173	2.0703	171	73.20	517	1.93	449	\$20,090.40	75
330	3	WILLINGBORO TWP	1812	186	38,068	4.990%	154	\$10,076	197	6,206	566	0.9402	354	1.2472	119	-10.41	90	2.90	83	\$17,111.34	47
416	2	HADDON TWP	1813	187	15,977	3.715%	312	\$11,672	323	41,402	185	0.6430	345	0.1753	390	-12.10	62	2.97	72	\$21,649.94	116
506	4	MIDDLE TWP	1814	188	12,654	7.509%	52	\$8,513	72	23,012	357	1.2661	193	1.7939	81	45.03	001	2.15	304	\$30,801.27	149
2100	4	HACKETTSTOWN TOWN	1826	189	9,046	3.154%	414	\$9,671	191	34,020	236	1.3523	175	0.3640	295	-4.50	102	2.85	149	\$31,616.21	204
823	3	MOOREBURG HEIGHTS BORO	1832	190	3,344	4.229%	182	\$10,010	191	27,720	309	0.6635	342	0.4107	260	-7.63	139	2.41	253	\$26,876.11	140
900	5	MARRISBORO TWP (GLONC.)	1837	191	3,666	9.360%	129	\$10,396	226	45,954	141	0.7053	320	1.1104	134	37.72	459	2.33	207	\$25,640.44	133
1335	3	NEPTUNE CITY BORO	1830	192	5,004	4.070%	260	\$11,385	301	20,090	296	0.8760	286	0.6090	214	-7.60	140	2.50	213	\$25,194.13	120

MUNICIPAL DISTRICTS, New Jersey --(in district rank order)

Municipality	Total Rank	Composite Rank	1985 Population	Percent Unemployed 1986		Per Capita Income 1983		Pre-1980	Sub-Standard	A.F.A.C. 1 of 1985	Pop. 1970-85	Rate of Change	Equalized Tax Rate 85-85 Avg	Equalized Valuation Per Capita 1986				
				Rank	Rank	Rank	Rank	Rank	Rank	Rank	Rank	Rank	Rank	Rank				
MONROE TWP (GLDUC.)	1839	193	22,758	6.8367%	91	10,661	77	14.982%	446	0.7211%	322	1.7884%	82	61,741	361	2.30	260	618,983
DELMAR BOROUGH (INDIAN)	1843	194	8,483	5.9819%	92	918,628	250	34.518%	235	2.0131%	104	1.5271%	94	12,121	348	2.18	463	941,441
GLENN GARDNER BOROUGH	1860	195	1,005	1.2448%	333	89,903	172	74.484%	7	1.9481%	114	0.2985%	325	14,991	362	2.67	144	629,886
PALMYRA BORO	1865	196	7,189	3.6872%	317	818,789	265	18.116%	124	0.3234%	394	1.1267%	133	3,161	264	2.42	291	823,617
LOWER ALLBAYS CREEK	1872	197	1,594	4.3662%	219	18,475	70	52.920%	81	0.7788%	16	1.1292%	132	13,861	328	0.76	361	659,657
FRANKLIN TWP (WARREN)	1874	198	2,329	4.3925%	214	918,340	216	48.892%	117	1.6971%	137	0.7299%	188	18,041	378	2.17	348	834,453
NORTH HANOVER TWP	1888	199	9,295	5.8756%	97	67,239	21	5.392%	357	0.9824%	254	0.4411%	261	-5,711	148	1.48	322	98,921
LYNDHURST TWP	1889	200	20,894	4.2503%	234	311,632	282	55.681%	72	2.8584%	188	0.3832%	287	-11,591	67	1.89	463	848,274
PILESBORO TWP	1897	201	2,867	4.8503%	265	818,319	213	34.603%	250	3.4120%	58	0.4917%	245	5,211	292	2.15	383	832,571
PENNSYLVANIA TWP	1910	202	13,665	4.7843%	68	918,394	223	21.691%	371	0.6988%	332	0.9416%	164	0,9416%	164	2.23	338	827,756
GARDNER BOROUGH	1933	203	4,678	3.1705%	410	811,075	285	48.550%	118	1.4213%	168	0.2779%	333	-11,061	75	2.44	248	840,232
MALDENBORO BORO	1934	204	18,478	4.7888%	172	818,559	239	39.742%	285	2.4548%	67	0.3149%	316	1,891	234	1.92	454	832,873
BERGENFIELD BOROUGH	1954	205	25,413	4.4745%	203	811,814	336	28.833%	298	0.8922%	288	0.2125%	375	-12,371	39	2.73	122	838,341
VICTORY GARDENS BORO	1964	206	1,177	7.8175%	60	89,388	128	5.512%	533	0.4843%	412	1.6992%	87	14,611	361	2.35	273	821,789
MEMORIAL BOROUGH	1967	207	2,248	3.3727%	377	813,262	422	58.836%	183	0.3822%	449	1.2580%	117	-5,251	174	2.64	153	828,853
SOUTH HARRISON TWP	1979	208	1,672	4.1611%	244	89,926	176	34.851%	244	1.6704%	139	0.3589%	299	36,381	454	2.28	388	823,842
PLUMSTEAD TWP	1983	209	4,914	3.4835%	351	98,515	73	27.166%	313	1.3338%	178	1.1803%	124	19,471	394	1.93	454	822,548
EDGEWATER BOROUGH	1993	210	2,688	3.9888%	288	89,891	189	38.122%	219	0.4785%	413	0.3489%	382	18,811	384	3.08	44	832,659
WHARTON BORO	1994	211	3,595	4.3188%	227	811,858	341	45.025%	154	0.8955%	278	0.4826%	246	1,081	247	2.45	234	837,394
KNIGHTON TWP	2009	212	2,238	3.1638%	412	89,187	128	41.467%	186	2.2727%	82	0.7623%	183	28,311	436	2.18	339	833,674
WASHINGTON TWP (MORRIS)	2011	213	882	2.9578%	448	87,669	31	37.318%	229	3.7057%	8	0.4988%	238	19,171	389	1.99	446	833,553
WATKIN BORO	2014	214	8,598	3.9532%	283	812,213	384	21.126%	388	0.6807%	335	0.7218%	198	-5,981	164	2.73	121	829,688
LIMBENHOLD BORO	2021	215	18,418	4.1644%	245	89,873	169	9.291%	328	0.4545%	418	1.7157%	84	38,981	489	2.85	38	815,088
SEASIDE HEIGHTS BORO	2021	216	2,062	6.9574%	61	87,682	29	25.744%	327	2.6316%	52	3.2376%	14	65,271	384	1.88	388	818,588
FRANKFORD TWP	2027	217	3,818	5.0282%	152	818,015	193	32.766%	288	2.2194%	84	0.3393%	298	88,411	323	2.49	216	839,258
ELLSBORO TWP	2027	218	1,281	4.7548%	179	811,373	388	34.992%	232	1.7375%	133	0.3125%	318	6,481	388	1.93	453	823,479
FRANKLIN TWP (ATLANTIC)	2032	219	11,849	6.4179%	77	818,232	287	23.188%	356	2.2976%	81	1.3736%	187	83,851	328	2.85	423	835,781
HAPLEWOOD TWP	2046	220	22,889	3.4183%	364	814,884	478	78.458%	16	0.5886%	362	0.2852%	381	-8,111	132	3.35	75	839,824
WEST MILMOOD BORO	2041	221	393	13.4529%	6	87,913	48	26.647%	321	2.3818%	72	1.2658%	116	68,071	511	1.86	471	884,636
WEST BRIDGE TWP	2044	222	88,753	3.3778%	335	814,889	446	48.854%	188	0.9441%	269	0.3982%	283	-4,781	154	3.46	26	841,778
RUTHERFORD BORO	2044	223	18,463	3.7232%	318	812,974	483	68.852%	46	1.1856%	211	0.1661%	481	-10,281	92	2.45	337	843,496
ALLENTOWN BOROUGH	2048	224	1,944	2.7451%	463	811,184	288	38.428%	216	0.8734%	287	1.1385%	131	21,081	482	2.73	119	826,481
SPOTSWOOD BOROUGH	2051	225	8,521	4.5868%	281	818,833	289	11.368%	493	0.6651%	361	0.5844%	234	7,981	313	2.99	68	825,331
WEST MILFORD TWP	2059	226	24,326	3.6744%	188	818,634	251	28.375%	388	1.2755%	188	0.4483%	262	81,741	478	2.73	128	837,825
GREENWICH TWP (HARRIS)	2072	227	1,674	4.4881%	211	818,348	217	58.912%	181	1.8383%	123	0.1195%	438	12,961	338	2.18	368	837,428
POHATCONG TWP	2079	228	3,734	1.9967%	522	89,329	138	36.264%	237	1.7537%	138	0.2891%	336	-5,381	173	2.19	338	838,575
MORRISTOWN TOWN	2074	229	16,941	3.8897%	338	813,289	425	67.828%	124	2.3476%	76	1.8488%	142	-4,081	188	2.18	338	837,487
NEW HANOVER TWP	2085	230	15,232	2.9758%	437	87,812	14	3.688%	331	1.2712%	187	0.8598%	493	-44,361	3	2.12	393	81,387
HIGHLANDS BOROUGH	2094	231	5,221	3.2689%	399	812,382	381	42.561%	177	1.8989%	229	1.5323%	93	33,321	452	2.84	139	832,871
NORTH WILMOOD CITY	2094	232	5,827	18.9445%	1	88,976	182	32.398%	263	1.3129%	185	1.6511%	88	28,441	438	1.71	388	892,461
CAPE MAY CITY	2098	233	5,174	11.8266%	13	89,585	145	35.874%	245	1.2352%	281	0.9884%	157	17,811	377	1.77	187	848,124
HOPE TWP	2101	234	1,582	5.4859%	123	89,936	188	38.184%	228	2.1622%	94	0.3161%	313	38,771	488	2.16	378	843,341
LINDEN CITY	2109	235	37,838	5.3883%	135	818,984	278	28.975%	293	1.4663%	162	0.8666%	162	-8,591	122	1.51	517	848,789
WATKINS TOWN	2118	236	7,571	4.9588%	168	815,476	411	34.293%	252	2.4649%	65	1.3584%	92	31,581	444	2.38	381	841,888
WINE HILL TWP	2123	237	3,344	3.9563%	282	811,672	324	23.293%	352	1.2422%	199	0.2888%	377	-5,371	171	2.39	177	834,744
FRELINGHUYSEN TWP	2124	238	1,571	4.8888%	276	818,737	282	32.816%	91	1.6293%	145	0.5892%	232	48,521	467	2.18	354	839,127
MANAHOSS BOROUGH	2128	239	18,321	3.8845%	294	89,821	161	27.358%	311	0.9758%	257	0.3232%	383	21,831	488	2.53	199	838,888
NORTH ARLINGTON BORO	2137	240	18,239	3.9288%	289	811,734	331	37.864%	223	1.1584%	214	0.1989%	388	-18,261	94	2.13	392	831,882

MUNICIPAL DISTRESS, New Jersey --(in distress rank order)

Municipality	Total Rank	Composite Rank	1983 Population	Percent Unemployed 1985	Rank	Per Capita Income 1983	Rank	Pre-Housing 1980	Rank	Sub-Standard Housing 1980	Rank	A.F.B.C. % of 1985	Rank	Pop. Rate of Change 1970-85	Rank	Equalized Tax Rate 83-85 Avg	Rank	Equalized Valuation Per Capita 1986
AMOUNT BOROUGHS	2130	291	17,979	3.43621	361	\$11,831	337	38.3312	290	0.82771	293	0.19471	302	-19.801	82	2.67	166	\$36,657
LOMBSBURY BOROUGHS	2140	292	844	1.79641	536	\$12,227	365	78.4051	17	2.19162	89	0.23701	359	-3.781	190	2.19	351	\$31,985
ALDWELL BOROUGHS TWP	2142	293	7,600	2.30611	501	\$14,057	451	46.4671	137	0.88441	283	0.23681	360	-12.412	58	3.04	63	\$39,014
JACKSON TWP	2145	294	27,430	4.54611	197	\$9,267	125	7.0721	539	0.80381	302	0.65111	200	47.901	486	2.67	165	\$21,439
ROCKTON BOROUGHS	2159	295	623	2.54631	488	\$10,731	266	63.1771	38	1.16281	212	0.32101	304	0.651	243	2.25	327	\$38,526
LIBERTY TWP	2168	296	1,818	4.99361	153	\$9,909	173	28.0451	303	1.12901	218	0.38591	284	47.841	485	2.36	302	\$33,166
ETUCHEN BOROUGHS	2183	297	13,125	3.68451	318	\$14,758	449	31.3331	268	0.59421	357	0.38101	289	-18.131	14	2.74	114	\$45,062
MANTAGE TWP	2185	298	7,713	5.02721	151	\$9,280	121	25.9541	326	1.21161	203	0.20741	379	78.171	522	2.94	239	\$35,162
SOUTH GRANDE VILLAGE TWP	2189	299	15,874	2.53721	490	\$10,732	337	64.3711	32	1.00941	251	0.21421	373	-4.461	159	3.84	21	\$41,754
ARMONY TWP	2193	299	2,614	3.75311	308	\$10,155	202	43.6181	167	2.44721	68	0.19131	397	19.871	388	2.16	404	\$37,468
NORTHFIELD CITY	2198	291	7,671	5.61101	113	\$12,127	360	24.2931	342	0.11491	541	0.31291	317	-11.281	73	2.59	176	\$38,035
EAST GREENWICH TWP	2199	292	4,346	3.79681	301	\$10,263	210	37.6121	223	1.26381	194	0.43721	263	32.361	449	2.18	401	\$27,483
BERDEEN TWP	2209	293	18,754	3.89391	298	\$11,441	303	18.8201	502	0.75691	316	0.53321	224	6.071	298	2.98	86	\$29,827
OPENELL BOROUGHS	2212	294	2,613	2.28991	567	\$11,985	351	68.0721	28	2.17111	92	0.64971	266	-11.361	72	2.21	343	\$41,667
SOUTH WICKENSACK TWP	2217	295	2,204	4.57411	195	\$10,383	222	28.5171	323	2.50661	63	0.48831	273	-8.621	119	1.76	488	\$111,314
MALDEN TWP	2219	296	17,979	5.92231	96	\$9,486	139	20.8541	385	1.26711	199	0.47511	248	113.621	549	2.83	427	\$29,870
EARLSTADT BOROUGHS	2224	297	6,144	4.46921	210	\$10,784	263	58.1281	57	2.17481	91	0.16271	407	-8.681	121	1.33	533	\$143,685
SPRINGFIELD TWP (BUR.)	2226	298	2,819	3.26801	393	\$9,813	159	32.5251	267	2.86661	43	0.39021	282	25.621	423	2.85	422	\$34,825
LUCESTER TWP (CAMDEN)	2230	299	49,284	4.67021	261	\$9,889	171	7.0421	540	0.39051	445	0.81571	176	85.701	536	3.09	54	\$18,921
LIFFSIDE PARK BORO	2230	260	20,863	3.87321	98	\$13,949	444	45.5621	146	2.43821	69	0.36431	290	10.441	331	1.85	472	\$47,332
ETCONG BORO	2234	261	3,394	3.87931	295	\$10,585	242	31.0571	278	0.88241	284	0.48651	245	22.251	487	2.33	288	\$31,533
ATMONTOWN BOROUGHS	2235	262	13,959	3.44691	360	\$10,892	275	10.3661	508	0.66281	343	0.42881	266	-10.671	85	2.78	132	\$37,425
WIDDLESET BOROUGHS	2242	263	33,216	3.13561	417	\$13,249	298	21.1481	379	0.55211	379	0.29311	328	-12.121	63	2.77	187	\$38,213
POWER TWP	2244	264	19,130	10.19311	20	\$8,325	59	9.5561	517	0.76331	314	1.40091	105	88.401	534	1.91	460	\$33,971
ROSEVELT BORO	2245	265	846	4.38761	215	\$11,772	332	58.4971	54	0.80001	561	0.80001	553	6.291	299	2.95	76	\$27,394
VALISADES PARK BORO	2249	266	13,595	3.88871	215	\$11,968	348	38.6651	213	2.33101	77	0.29011	344	1.831	252	2.11	397	\$41,918
WANSFIELD TWP (BUR.)	2249	267	2,704	1.72161	539	\$11,239	289	53.4461	73	1.62221	146	0.78271	194	4.121	278	1.93	458	\$37,968
CLIFTON CITY	2255	268	76,673	4.10541	253	\$11,719	329	40.6441	194	1.32821	180	0.26211	338	-6.971	151	1.90	463	\$43,839
WANSFIELD TWP (MORRIS)	2285	269	9,807	4.16761	252	\$10,213	284	37.9121	421	1.59021	150	0.61991	215	63.761	507	2.21	341	\$28,723
WILMINGTON BOROUGHS	2286	270	8,073	3.78231	303	\$10,640	252	28.8581	315	0.67951	336	0.13631	427	3.341	260	2.78	136	\$32,460
MALDEN BOROUGHS	2286	271	1,020	3.28951	389	\$12,346	378	48.3701	122	1.08781	235	0.27411	329	5.151	289	2.49	219	\$41,471
MURKINGTON TWP	2283	272	11,588	4.03211	249	\$9,653	150	12.6981	477	0.83211	297	1.85281	140	9.161	322	2.15	387	\$35,365
HIGH BRIDGE BOROUGHS	2283	273	3,762	1.35881	551	\$11,065	284	49.0821	113	1.34231	177	0.58511	235	44.361	478	2.51	288	\$34,581
OLD BRIDGE TWP	2287	274	54,469	4.59711	191	\$11,529	312	6.8601	542	0.58101	484	0.49371	248	12.221	349	2.88	89	\$27,879
HEARCK TWP	2300	275	38,514	3.17091	409	\$14,017	449	47.2921	130	0.45541	419	0.25451	342	-9.071	115	2.98	76	\$46,538
WILMODO PARK BORO	2300	276	18,212	5.35761	131	\$10,726	258	19.8581	489	1.17781	209	0.16171	404	-11.211	74	1.82	482	\$42,791
BARNEGAT TWP	2300	277	9,476	3.69061	316	\$7,833	37	7.4971	534	0.51481	406	0.93921	154	515.721	567	2.57	182	\$23,426
WELLEN HEDGE BOROUGHS TWP	2303	278	7,994	3.76831	305	\$16,461	588	37.8851	4	0.16141	531	0.13921	425	-7.211	147	3.62	28	\$46,186
WILMINGTON TWP (MERCER)	2306	279	85,766	3.52061	342	\$10,793	266	25.2671	353	0.56091	375	0.32301	306	7.731	312	2.54	193	\$27,733
ROSEWATER BOROUGHS	2313	280	4,738	3.96581	281	\$15,794	493	49.0581	114	2.25331	84	0.65431	206	-4.991	178	1.93	451	\$85,373
WILFORD BOROUGHS	2318	281	1,365	2.15341	513	\$9,859	164	34.6791	206	0.80161	383	0.73261	186	18.981	339	2.32	289	\$41,294
WILMINGTON LAKES BORO	2327	282	11,034	4.19621	241	\$12,271	371	21.6491	374	0.75951	317	0.11781	441	-3.191	260	2.72	126	\$36,675
UPPER FREEHOLD TWP	2332	283	2,850	1.77151	537	\$11,329	297	43.1911	171	2.29891	88	0.57631	227	11.721	344	2.28	307	\$46,922
ROSEWATER PARK TWP	2333	284	9,220	4.05041	244	\$11,842	283	8.7951	326	0.79951	384	0.63991	218	24.391	419	2.38	263	\$19,281
EAST PATERSON BORO	2334	285	11,463	4.34331	223	\$11,382	293	20.2751	398	1.74491	131	0.16581	403	-1.961	213	2.66	373	\$40,414
WILSON BOROUGHS	2334	286	1,943	6.81831	65	\$9,184	119	9.1671	521	0.33331	463	0.56611	219	9.961	327	1.94	445	\$29,191
WILMODO TWP	2339	287	2,909	4.11391	251	\$11,689	327	43.5131	168	2.04921	181	0.37811	279	26.811	425	2.83	431	\$43,741
WON-ON-THE-SEA BORO	2339	288	2,310	4.36871	218	\$12,251	367	33.3121	76	0.81831	298	0.77921	177	6.801	306	1.87	449	\$36,934

MUNICIPAL DISTRESS, New Jersey --(in distress rank order)

Mun. Code	Urban Level	Municipality	Total Rank	Composite Rank	1985		Percent Unemployed 1986		Per Capita Income 1983		Pre-1940 Housing		Sub-Standard Housing		A.F.D.C. % of 1985		Pop. Rate of Change 1970-85		Equalized Tax Rate 81-85 Avg		Equalized Valuation Per Capita 1984	
					Population	Rank	Rank	Rank	Rank	Rank	Rank	Rank	Rank	Rank	Rank	Rank	Rank	Rank	Rank	Rank	Rank	
009	3	LOGAN TWP	2340	289	3,529	0.02481	272	89,920	175	27,989	305	1,77301	120	0.73682	185	91,792	336	2.05	421	941,947.07	318	
1604	2	HAWTHORNE BOROUGH	2342	290	18,817	3.49492	348	811,511	310	47,913	125	1,34361	176	0.67492	478	-2,485	205	2.17	362	843,852.00	338	
1504	3	DEACONSDOWN BOROUGH	2342	291	9,932	3.35222	340	98,859	99	15,826	636	0.34821	657	0.51052	231	82,962	574	2.35	109	823,512.68	113	
2019	3	UNION TWP (UNION)	2346	292	30,763	5.21742	138	812,083	357	38,092	202	1.24432	321	0.24432	351	-4,341	184	2.19	348	844,091.52	343	
249	2	WISSENFIELD BORO	2348	293	10,128	3.26872	134	812,151	361	33,190	243	1.47431	161	0.24662	332	-10,442	88	0.65	566	863,323.61	456	
1416	3	LINCOLN PARK BOROUGH	2349	294	9,857	4.32722	224	816,745	264	25,676	320	0.71321	324	0.12177	436	9,112	323	2.41	167	838,675.73	294	
2122	5	WASHINGTON TWP (MORREN)	2357	295	4,333	3.46481	335	811,288	292	25,240	350	1.68442	142	0.36932	292	20,862	400	2.33	284	837,083.63	262	
1483	2	BUTLER BOROUGH	2361	296	7,415	3.05452	429	811,292	295	41,932	181	0.58012	451	0.51252	230	5,162	290	2.49	217	837,708.45	270	
2101	5	HARDWICK TWP	2369	297	1,049	10.07371	22	91,984	109	31,270	269	0.97721	256	0.28042	331	91,622	333	2.07	411	843,351.44	354	
1223	2	MOOREBURNE TWP	2378	298	82,644	3.99882	277	811,810	335	17,959	420	0.67431	338	0.32172	307	-6,372	161	2.46	231	840,664.83	309	
1327	3	HANAUQUAN BOROUGH	2385	299	5,304	4.17922	242	811,547	314	45,056	153	1.64671	165	0.47132	290	6,702	385	1.74	493	844,876.29	463	
1009	1	FLEMINGTON BOROUGH	2392	300	4,251	1.26072	553	812,385	382	44,589	159	2.70711	40	0.58702	218	8,732	320	2.25	325	849,045.97	387	
1919	3	STARHOPE BOROUGH	2409	301	3,702	1.21131	467	812,684	359	18,529	306	1.19011	205	0.40522	276	21,781	405	2.62	161	833,351.41	227	
515	3	MILBROOK CREST BORO	2402	302	4,261	13.74412	4	810,813	192	21,083	381	1.53512	154	0.68062	199	22,342	409	1.39	527	8123,763.39	536	
1523	3	PINE BEACH BOROUGH	2406	303	1,773	3.36972	378	810,457	253	22,371	361	0.72652	323	0.67482	206	22,102	427	2.32	204	834,784.98	260	
237	2	MORRISVILLE BORO	2409	304	2,462	7.07222	53	810,382	221	18,689	414	1.07631	200	0.33812	303	-9,792	184	1.77	336	8135,944.09	540	
2000	3	KENILWORTH BORO	2420	305	8,168	5.78852	166	810,615	246	15,284	444	0.54172	384	0.51832	512	-10,881	79	1.77	436	854,171.26	411	
1426	3	MOUNT ARLINGTON BORO	2424	306	4,081	3.87762	296	811,969	349	15,266	406	0.94852	267	0.39212	280	13,681	357	2.39	258	832,820.57	211	
230	2	LITTLE FERRY BORO	2432	307	10,225	4.32412	226	812,342	377	28,291	381	1.73762	132	0.18582	394	12,812	354	2.16	374	838,004.28	274	
1433	3	RIVERDALE BORO	2432	308	2,462	4.24982	235	811,671	322	36,554	233	0.34972	454	0.24372	352	-9,781	181	2.30	304	857,356.44	429	
1527	3	SEASIDE PARK BOROUGH	2434	309	1,816	5.56262	120	812,347	379	38,870	212	1.33331	179	2.20262	45	26,822	426	1.60	512	8142,126.10	541	
319	3	MAPLE SHADE TWP	2438	310	26,008	3.76122	306	810,577	241	13,180	471	0.54882	382	0.38482	286	21,532	403	2.34	279	820,793.42	82	
367	5	CHESTERFIELD TWP	2454	311	4,210	1.55362	547	89,852	108	39,286	216	1.18892	204	0.04752	516	34,972	446	2.17	366	819,831.04	61	
909	2	SECAUCUS TOWN	2456	312	15,150	5.49812	121	813,483	439	28,044	304	1.32682	181	0.37602	279	16,331	339	2.38	261	888,256.96	512	
1434	3	ROCKAWAY BORO	2459	313	6,447	3.94552	286	812,867	398	34,116	254	1.58862	151	0.04022	496	4,142	279	2.32	290	810,300.66	387	
304	3	BORDENTOWN TWP	2460	314	7,114	3.59382	333	810,918	278	7,816	532	0.59552	356	0.30802	321	-2,182	289	2.32	282	833,491.82	279	
1102	3	EWING TWP	2462	315	33,259	3.38162	372	811,842	336	18,000	418	0.58432	363	0.24672	347	7,482	310	2.44	147	828,387.99	165	
1013	5	LAFAYETTE TWP	2464	316	1,769	3.61452	328	810,857	276	36,531	234	1.68842	144	0.22612	345	47,172	684	2.42	258	849,393.22	389	
101	3	MORRIS CITY	2465	317	7,282	5.42572	126	811,989	352	24,366	341	0.49142	408	0.09442	242	19,492	339	2.12	396	831,626.92	285	
1914	5	MONTAGUE TWP	2474	318	2,231	5.31592	134	89,722	131	14,350	432	1.61872	147	0.67232	202	97,262	338	1.69	303	843,587.98	345	
417	2	MORRISFIELD BORO	2477	319	12,663	1.93642	525	816,723	509	59,276	50	0.47682	614	0.22382	368	-8,042	133	2.76	130	846,886.93	348	
1414	3	JEFFERSON TWP	2485	320	16,706	4.23812	236	810,997	281	14,147	433	1.25252	197	0.38312	288	18,302	380	2.09	404	837,197.37	264	
1920	5	STILLWATER TWP	2485	321	4,637	1.66082	544	89,752	157	28,919	299	1.31312	184	0.29732	327	87,672	333	2.46	232	832,235.72	214	
1917	5	SANDYSTON TWP	2487	322	1,545	2.66012	472	-810,671	235	28,988	295	16,075	2	0.25892	341	18,372	382	2.09	485	845,191.76	339	
2020	3	WESTFIELD TOWN	2509	323	30,329	3.95182	284	817,778	527	45,313	148	0.74472	311	0.14082	626	-9,442	180	2.33	283	856,351.92	624	
807	3	GREENWICH TWP (GLMC.)	2513	324	5,284	4.15072	247	810,614	229	29,825	284	0.43862	428	0.79462	174	-6,872	153	1.49	502	876,930.91	496	
1018	1	LEBANON BOROUGH	2516	325	906	2.18692	588	811,444	321	86,782	22	0.00002	561	0.77262	179	2,372	256	2.43	217	856,867.68	622	
2118	5	PANAMAQUI TWP	2519.5	326	75	0.00002	564.5	810,310	268	77,782	5	0.00002	561	0.00002	553	-44,792	2	1.33	534	827,788.00	180	
1339	3	HAZLET TWP	2523	327	22,822	4.28182	231	810,607	244	6,475	543	0.17892	524	0.24982	343	2,422	259	2.50	211	828,315.58	166	
2003	3	CRAWFORD TWP	2530	328	24,252	3.29052	388	813,846	443	39,341	289	0.52772	391	0.09072	461	-11,442	68	2.51	287	847,887.88	371	
225	2	HASBROUCK HTS BORO	2538	329	11,816	2.98812	435	813,639	486	80,279	198	0.93862	273	0.29542	358	-13,442	44	2.06	428	854,240.94	612	
229	2	LEDMIN BORO	2543	330	8,093	2.64382	475	815,923	499	48,433	119	0.79142	386	0.08652	463	-8,522	123	2.76	131	854,364.66	625	
1903	4	BRANCHVILLE BORO	2545	331	837	0.97852	559	811,751	330	63,272	37	1.13942	217	0.23892	356	-8,122	131	1.71	497	854,785.63	418	
1318	3	HONELL TWP	2548	332	29,799	4.33312	222	810,683	199	14,882	449	0.67762	337	0.31212	319	36,972	433	2.18	352	832,242.96	215	
1222	3	SOUTH PLAINFIELD BORO	2552	333	20,271	4.10022	285	811,287	291	15,429	439	0.38132	458	0.23682	361	-4,122	187	2.67	143	858,549.39	426	
106	5	CORDON CITY	2557.5	334	379	0.00002	564.5	89,952	184	41,481	156	2.87772	41	0.00002	353	8,142	315	1.70	501	835,189.44	245	
1916	5	LITTLE EGG HARBOR TWP	2560	335	10,887	4.68872	198	88,823	88	3,831	561	0.28442	698	0.08232	161	239,482	561	2.52	290	839,664.83	381	
1332	5	HILLSTONE TWP	2569	336	4,234	3.58882	346	810,081	198	26,320	332	1.59462	148	0.25982	340	67,022	508	2.22	338	846,081.42	360	

Mun. Code	Urban Level	Municipality	Total Rank	Composite Rank	1985 Population	Percent Unemployed 1986		Per Capita Income 1983		Pre-1980 Housing		Sub-Standard Housing 1980		1987 A.F.D.C. % of 1985		Pop. Change 1970-85		Equalized Tax Rate 85-85 Avg		Equalized Value Per Capita 1986	
						Rank	Rank	Rank	Rank	Rank	Rank	Rank	Rank	Rank	Rank	Rank	Rank	Rank	Rank	Rank	
234	2	WYHOOD BORO	2548	337	9,784	2.251%	504	812,237	344	32,889	259	1,252	198	0.153%	414	-11,752	66	2.16	389	848,704.96	381
122	2	VENTNOR CITY	2574	338	11,951	3.683%	107	813,044	407	42,419	179	0.760%	315	0.562%	236	13,882	345	1.47	524	648,585.01	441
189	5	ESTELL WANDA CITY	2575	339	1,064	4.588%	192	98,789	85	21,543	375	0.974%	258	0.298%	326	86,447	532	1.85	475	842,743.41	332
311	3	EASTAMPTON TWP	2577	340	3,824	2.154%	512	811,566	316	8,162	329	0.997%	252	0.470%	251	47,432	510	2.72	123	828,946.25	84
108	5	EGG HARBOR TWP	2578	341	21,385	6.397%	78	910,039	195	9,800	515	0.526%	392	1.178%	126	116,482	350	1.85	474	435,389.66	248
1338	3	OCEANPORT BORO	2579	342	6,253	3.902%	291	811,596	319	30,513	277	0.165%	330	0.880%	471	-14,662	21	2.27	317	435,145.01	353
2123	5	WHITE TWP	2579	343	2,983	3.484%	350	89,754	158	32,297	264	1.092%	231	0.636%	211	28,251	434	1.86	478	442,985.93	453
120	5	PORT REPUBLIC CITY	2583	344	890	3.593%	332	810,677	236	34,854	255	1.818%	125	0.224%	366	51,882	491	1.48	504	835,719.13	254
121	3	SONERS POINT CITY	2593	345	10,476	4.468%	159	810,788	264	12,341	484	0.441%	426	0.496%	197	32,297	448	2.17	364	435,682.98	251
720	2	WERONA BORO	2664	346	14,217	3.937%	278	816,353	506	37,598	226	0.412%	439	0.042%	515	-3,442	170	2.96	75	850,980.79	395
1811	3	RINGWOOD BORO	2685	347	13,306	4.761%	178	811,506	309	15,269	449	0.295%	488	0.315%	315	28,032	433	2.72	125	838,839.66	288
1612	2	TOTONA BORO	2686	348	11,362	4.867%	167	810,484	227	34,461	251	0.497%	329	0.880%	462	-1,882	716	1.64	519	848,539.45	444
1808	3	FRAWLIN TWP (SOMERSET)	2688	349	33,952	3.355%	383	812,479	392	15,766	438	0.440%	348	1.019%	146	11,722	345	2.48	220	442,986.89	358
1219	3	SAVREVILLE BORO	2611	350	32,367	4.128%	250	811,341	299	17,416	423	0.497%	405	0.237%	357	-0,432	256	2.84	419	832,748.54	272
235	2	HIGHLAND PARK BORO	2616	351	7,274	2.743%	464	812,540	388	42,538	178	0.961%	261	0.687%	484	-10,951	80	2.17	363	858,392.94	374
1804	2	NORTH HALEDON BORO	2618	352	9,501	6.185%	85	811,547	313	28,971	292	0.487%	410	0.882%	468	11,452	343	2.15	385	841,735.94	322
249	2	WOOD RIDGE BORO	2619	353	7,943	4.443%	264	812,783	393	31,640	93	0.564%	373	0.842%	491	-4,432	183	1.75	489	849,725.64	371
267	2	WESTWOOD BORO	2620	354	10,967	3.271%	372	813,153	415	36,925	230	1.322%	187	0.164%	485	-1,242	225	2.13	394	847,985.12	379
1336	3	TINTON FALLS BORO	2622	355	8,891	3.464%	357	811,874	343	12,865	490	0.331%	467	0.472%	249	3,911	297	2.91	82	843,018.42	357
332	5	SHAWING TWP	2620	356	4,960	3.613%	329	89,932	179	10,247	509	1.057%	244	0.282%	332	276,332	565	2.26	370	827,174.71	152
238	2	NEW MILFORD BORO	2629	357	16,511	3.517%	313	812,429	384	15,465	443	0.399%	441	0.127%	434	-13,782	39	2.43	245	839,288.42	368
1109	3	PINCETON BORO	2630	358	12,831	2.746%	505	813,083	411	82,972	41	1.072%	282	0.207%	378	-2,277	267	2.83	425	835,750.69	421
317	5	LUMBERTON TWP	2633	359	5,282	2.844%	453	810,431	231	12,318	486	0.532%	200	0.357%	221	31,862	445	2.36	272	826,136.11	137
227	2	HILLSDALE BORO	2637	360	10,297	3.408%	345	814,730	468	29,183	288	0.673%	340	0.048%	508	-12,582	55	2.50	212	832,188.60	401
1076	5	WEST AMHILL TWP	2641	361	2,268	1.877%	531	812,163	362	30,873	271	1.958%	112	0.220%	370	5,887	276	2.31	300	832,137.76	399
310	2	DELRAN TWP	2643	362	19,452	3.377%	375	810,727	259	8,144	530	0.330%	389	0.491%	244	43,592	474	2.48	254	822,998.02	218
920	3	WEST DEPTFORD TWP	2676	363	18,143	4.375%	216	810,814	268	15,578	463	0.580%	481	0.593%	217	30,242	442	2.17	363	832,954.36	276
1912	3	HOPATCONG BORO	2676	364	15,874	3.383%	384	810,353	238	12,582	481	0.763%	313	0.364%	294	64,531	505	2.47	225	834,863.13	234
2885	2	FANWOOD BORO	2685	365	7,387	3.264%	394	814,141	451	25,800	335	0.158%	533	0.091%	468	-13,822	38	2.49	141	842,018.87	329
1510	3	ISLAND HEIGHTS BORO	2687	366	1,638	3.121%	422	89,381	129	45,172	150	0.323%	472	0.122%	435	17,252	374	2.19	402	848,288.90	383
1911	5	HARDYSTON TWP	2690	367	4,427	3.380%	373	810,461	254	15,502	442	0.857%	296	0.127%	438	32,242	447	2.42	163	839,042.94	291
1083	4	CLINTON TOWN	2692	368	1,999	2.689%	478	812,264	349	40,827	280	1.084%	237	0.052%	501	9,597	325	2.43	160	857,475.78	430
1212	3	HILLTOWN BORO	2696	369	7,048	3.018%	432	812,339	375	37,838	224	0.573%	349	0.224%	364	9,282	324	2.27	316	839,058.80	292
1316	5	FREEDHOLD TWP	2703	370	20,452	3.387%	370	812,282	372	8,435	527	2.822%	44	0.353%	301	56,632	495	2.34	281	841,169.16	315
335	5	TABERNACLE TWP	2721	371	6,882	2.770%	459	89,440	136	5,444	534	1.108%	224	0.470%	422	223,442	558	2.11	398	846,325.40	146
1282	3	CRANBURY TWP	2725	372	2,143	1.689%	542	814,710	467	52,431	88	1.490%	159	0.466%	253	-4,792	179	1.66	507	818,133.88	530
2112	5	INDEPENDENCE TWP	2728	373	2,941	3.450%	359	810,474	235	21,629	373	1.161%	213	0.170%	488	42,982	472	2.16	378	839,214.52	298
429	3	PINE VALLEY BORO	2732.3	374	29	0.000%	544.5	89,851	144	85,000	1	0.000%	561	0.000%	553	8,782	319	4.32	15	828,988.32	553
264	2	WALWICK BORO	2762	375	10,582	3.511%	345	813,171	417	18,990	411	0.390%	484	0.341%	423	-14,862	35	2.40	255	847,244.20	372
2104	5	BALWINSTON TWP	2764	376	4,743	7.048%	56	811,927	344	24,896	345	1.494%	158	0.252%	343	116,772	551	0.65	567	848,121.85	380
1313	3	FAIR HAVEN BORO	2768	377	5,543	3.135%	418	815,584	488	35,194	242	0.103%	544	0.289%	338	-9,758	102	2.47	227	833,492.53	469
1812	3	HILLSTONE BORO	2768	378	520	0.920%	560	814,479	462	40,230	199	0.578%	364	0.192%	383	-17,462	18	1.72	495	838,075.84	277
1524	3	POINT PLEASANT BORO	2772	379	18,375	4.059%	262	810,947	196	12,659	478	0.328%	470	0.451%	257	13,872	364	2.61	434	848,926.81	311
322	3	MOORESTOWN BORO	2772	380	15,841	3.184%	404	814,063	501	37,571	227	0.588%	362	0.246%	348	1,497	250	2.35	275	852,365.33	402
1817	3	ROCKY HILL BORO	2775	381	782	1.345%	552	815,911	498	45,588	145	1.132%	222	0.342%	428	-23,452	7	1.38	528	852,784.24	405
1310	3	DEAL BORO	2778	382	1,868	2.423%	446	823,261	557	55,641	76	0.521%	398	0.903%	172	-21,281	9	1.25	537	8128,970.92	539
1217	3	PISCATAWAY TWP	2781	383	43,252	3.573%	334	811,128	287	11,327	494	0.544%	383	0.374%	291	18,772	384	2.34	378	842,837.55	334
1007	5	DELAWARE TWP	2783	384	3,851	2.600%	481	812,972	482	47,348	129	1.309%	186	0.155%	418	18,622	383	2.08	488	848,338.31	384

MUNICIPAL DISTRESS, New Jersey --(in distress rank order)

Municipality	Total Rank	Composite Rank	1965 Population	Percent Unemployed		Per Capita Income		Pre-1960 Housing		Sub-Standard Housing		A.F.D.C. of 1965		Pop. Rate of Change 1970-65		Equalized Tax Rate 65-65 Avg		Equalized Valuation Per Cap 1960
				1966	Rank	1965	Rank	% 1960	Rank	% 1960	Rank	Pop.	Rank	1970-65	Rank			
SEA ISLE CITY	2704	383	2,934	6.449%	49	\$11,071	342	17,124	424	1,021	246	1,431	102	71,301	514	1.21	530	\$109,43
SHREWSBURY BORO	2794	396	2,954	3.048%	430	\$14,453	446	21,708	360	0.000	561	0.406	273	-10,071	70	2.62	164	\$64,30
PEGANUCK TWP	2797	387	13,352	4.172%	244	\$13,040	408	19,192	607	0.308	470	0.036	519	-9,701	169	2.40	222	\$44,37
LICH ABOUR VILLAGE	2805	388	350	1.010%	535	\$16,167	504	82,942	3	0.000	561	0.000	553	-9,371	110	2.09	90	\$62,04
LEBANDON TWP	2807	389	9,483	3.245%	400	\$11,477	325	30,782	274	2.496	71	0.145	910	29,472	441	1.36	530	\$43,97
RICHELLE PARK TWP	2808	390	5,420	3.134%	419	\$11,939	345	29,177	289	0.776	309	0.129	431	-14,922	31	1.09	520	\$45,00
HAMPTON TWP	2812	391	4,170	3.128%	420	\$9,975	180	11,948	491	0.504	344	0.239	353	99,451	541	2.53	192	\$34,80
SUNNIT CITY	2819	392	21,773	3.397%	347	\$22,105	555	46,201	130	1.075	241	0.109	450	-9,941	97	1.04	474	\$76,40
MADISON BORO	2829	393	13,293	2.849%	452	\$16,032	500	40,424	197	1.021	247	0.130	429	-8,472	120	2.02	432	\$41,75
ALLENBURST BORO	2829	394	991	3.058%	420	\$15,065	403	83,110	2	0.555	377	0.111	444	-10,972	76	1.79	340	\$70,84
BEACH HAVEN BORO	2833	395	1,776	3.415%	117	\$12,732	394	30,859	272	0.765	310	0.450	250	19,351	391	1.10	342	\$179,61
MOUNTAIN LAKES BORO	2834	396	4,120	1.695%	541	\$20,459	547	56,536	63	0.083	547	0.121	437	-13,661	49	2.60	172	\$70,46
WASHINGTON TWP INCERO	2839	397	3,719	4.545%	198	\$12,363	300	40,292	366	0.948	291	0.000	449	12,372	350	2.01	436	\$44,32
UPPER TWP	2844	398	8,359	4.254%	233	\$9,736	155	19,617	400	1.266	192	0.191	386	144,922	355	0.60	544	\$45,00
SCOTCH PLAINS TWP	2843	399	26,884	3.622%	326	\$13,473	494	16,012	433	0.436	422	0.191	383	-1,792	210	2.35	100	\$47,67
CLIMAX TWP	2845	400	13,719	2.478%	472	\$12,766	396	11,173	499	0.299	406	0.299	323	-7,331	145	2.31	215	\$31,97
FAIR LAWN BORO	2847	401	31,200	3.749%	309	\$13,739	441	22,392	343	0.419	434	0.000	446	-17,612	17	2.09	407	\$53,86
WEST LONG BRANCH BORO	2848	402	7,561	3.378%	374	\$12,083	350	26,853	316	0.305	479	0.211	376	10,461	333	2.31	290	\$41,82
SEA BRIGHT BORO	2852	403	1,062	4.071%	259	\$16,992	514	35,189	244	0.892	201	0.537	222	39,662	662	2.19	306	\$72,99
ROXBURY TWP	2856	404	19,672	3.140%	416	\$12,282	360	19,463	403	0.925	240	0.249	346	24,071	421	2.33	285	\$45,43
CEDAR GROVE TWP	2856	405	12,613	2.368%	405	\$12,000	399	15,160	445	0.495	407	0.110	439	-19,051	13	2.31	200	\$49,23
WESTAMPTON TWP	2856	406	4,849	3.210%	403	\$11,445	304	10,577	506	0.262	500	0.499	241	80,931	325	2.40	169	\$31,72
WEST CALDWELL TWP	2861	407	11,453	3.676%	321	\$13,040	181	23,254	354	0.301	483	0.061	493	-3,861	192	2.01	99	\$60,21
PT PLEASANT BEACH BORO	2861	408	5,484	3.260%	390	\$11,330	290	30,503	270	0.693	330	0.499	237	10,491	336	1.71	497	\$45,26
DOVER TWP	2865	409	69,116	3.691%	320	\$9,960	187	5,462	355	0.334	462	0.730	187	57,901	499	2.32	272	\$46,20
SHIP BOTTOM BORO	2865	410	1,463	4.378%	217	\$11,799	334	19,448	644	2.139	162	0.409	272	35,771	453	1.14	344	\$156,40
OCEAN CITY (CAPE MAY)	2868	411	15,230	4.232%	237	\$12,665	391	30,621	276	0.906	253	0.833	165	64,022	474	1.35	331	\$125,59
ROCKAWAY TWP	2873	412	19,722	3.386%	371	\$13,077	410	12,366	483	0.820	296	0.136	426	4,951	274	2.33	194	\$54,56
CHERRY HILL TWP	2873	413	71,292	2.904%	436	\$14,250	455	5,624	352	0.454	417	0.232	343	10,711	337	3.07	54	\$37,82
BERKELEY TWP	2881	414	30,340	4.744%	191	\$8,900	96	3,686	562	-0.417	421	0.369	293	283,181	344	1.83	479	\$38,71
OCEAN TWP (OCEANO)	2882	415	3,063	3.423%	362	\$9,714	152	10,136	511	0.557	427	0.499	196	73,852	510	2.16	377	\$49,67
RIDGEWOOD TWP	2883	416	29,923	2.459%	495	\$20,132	544	46,921	132	0.425	432	0.040	509	-9,531	104	2.54	194	\$61,31
ANDOVER TWP	2883	417	4,731	3.342%	385	\$10,963	272	15,592	446	0.530	387	0.190	390	53,432	494	2.47	229	\$30,79
LDPATEONG TWP	2885	418	4,910	3.991%	279	\$10,879	274	10,824	412	0.374	453	0.166	402	53,241	493	2.22	235	\$34,89
EAST AMWELL TWP	2887	419	3,431	1.539%	548	\$12,627	390	40,813	199	1.444	146	0.385	285	61,392	468	1.06	470	\$46,97
LACEY TWP	2889	420	16,715	5.083%	149	\$9,103	110	4,706	399	0.414	437	0.596	210	262,111	562	1.95	515	\$43,33
SURF CITY BORO	2890	421	1,599	6.007%	80	\$10,642	257	12,321	485	0.744	310	0.813	171	41,631	469	0.96	350	\$190,91
WASHINGTON TWP (BLM.C.)	2891	422	31,763	3.358%	380	\$10,343	210	5,423	354	0.223	515	0.475	247	101,791	543	2.27	310	\$74,50
LIMWOOD CITY	2896	423	4,200	4.175%	243	\$13,722	440	10,583	416	0.140	534	0.111	443	2,042	253	2.45	235	\$42,28
PARK RIDGE BORO	2898	424	8,410	2.688%	471	\$14,514	464	25,963	325	0.570	371	0.118	440	-3,341	197	2.47	224	\$52,72
FRANKLIN TWP	2912	425	2,440	1.908%	529	\$13,003	405	39,437	208	1.923	110	0.163	406	13,451	354	1.92	459	\$50,81
VERNON TWP	2915	426	10,106	4.812%	170	\$9,945	182	5,815	349	0.495	146	0.110	445	200,151	537	2.31	274	\$40,90
SADDLE BROOK TWP	2922	427	13,065	3.267%	394	\$11,042	339	14,489	454	0.576	360	0.180	396	-13,211	40	1.60	504	\$54,87
BLEEN ROCK BORO	2924	428	11,239	3.182%	407	\$16,783	510	38,325	217	0.104	343	0.035	521	-13,621	42	2.43	244	\$60,35
SOUTHAMPTON TWP	2926	429	9,904	3.265%	397	\$10,859	271	10,161	510	0.787	307	0.531	225	80,732	324	1.75	400	\$31,45
FAIR HILLS BORO	2931	430	673	2.031%	517	\$26,743	561	64,092	34	0.393	444	0.444	260	-13,661	43	1.30	329	\$144,14
STAFFORD TWP	2944	431	12,172	4.795%	171	\$9,371	133	7,452	535	0.309	477	0.949	153	250,401	359	1.72	496	\$53,20
ERESBON BORO	2945	432	7,557	3.615%	327	\$13,299	427	13,431	466	0.269	497	0.079	472	-10,331	91	2.36	249	\$51,03

MUNICIPAL DISTRESS, New Jersey --(in distress rank order)

Municipality	Total Rank	Composite Rank	1985 Population	Percent Unemployed 1984		Per Capita Income 1983		Prv- Housing % 1980		Sub-Standard Housing % 1980		1987 A.F.S.C. % of Pop. 1985		Pop. Rate of Change 1970-85		Equalized Tax Rate 80-85 Avg		Equalized Valuation Per Capita 1986
				1984	Rank	1983	Rank	% 1980	Rank	% 1980	Rank	Pop.	Rank	1970-85 Rank	80-85 Avg Rank			
LITTLE FALLS TWP	2956	433	12,236	3.2022	465	\$13,190	420	32.447	261	0.0185	297	0.0650	400	4.34	201	1.91	461	\$43,409
OCEAN TWP (MORNINGTON)	2958	434	23,753	2.7552	662	\$13,074	409	13.981	657	0.4849	411	0.3157	316	27.41	429	2.45	140	\$42,601
MARGATE CITY	2959	435	9,104	4.9533	161	\$17,252	520	10.425	415	0.3311	468	0.3074	322	-13.92	36	1.43	525	\$67,000
EAST BRUNSWICK TWP	2970	436	60,776	4.0273	271	\$13,651	438	6.847	545	0.3320	464	0.1423	422	19.33	390	2.74	113	\$41,991
PENNINGTON BOROUGH	2974	437	2,232	2.9678	439	\$17,040	518	53.141	79	0.5256	395	0.0440	513	3.77	273	2.10	357	\$52,165
CLOSTER BOROUGH	2976	438	8,160	3.0827	425	\$15,012	400	30.810	273	0.5257	394	0.0613	492	-5.16	175	2.35	274	\$44,500
DAKLAND BORO	2980	439	13,070	3.2920	387	\$13,519	434	8.850	525	0.3292	449	0.0765	476	-9.36	111	2.09	173	\$34,326
SOUTH BRUNSWICK TWP	3000	440	19,972	3.5238	341	\$12,069	355	12.264	468	0.7843	312	0.1903	389	42.07	471	2.55	190	\$43,367
SILVER EDGE BORO	3002	441	10,735	2.9391	444	\$14,943	474	20.996	383	0.3362	461	0.0372	510	-16.32	75	2.27	311	\$49,043
BYRAM TWP	3011	442	7,650	2.6993	469	\$11,390	294	0.1793	435	0.2222	349	0.6597	304	66.59	304	2.39	178	\$37,795
BRICK TWP	3018	443	59,280	3.7200	311	\$9,831	162	5.986	548	0.3036	400	0.4234	267	49.10	512	2.63	450	\$40,619
FAIRFIELD TWP (ESSEX)	3019	444	8,333	4.7086	105	\$12,492	396	13.324	440	0.7180	327	0.1920	386	21.63	401	2.22	337	\$106,479
ALEXANDRIA TWP	3020	445	3,047	2.7741	458	\$11,853	340	34.815	247	0.5302	390	0.0963	453	43.25	473	2.27	312	\$45,249
NORTH BRUNSWICK TWP	3029	446	25,427	3.8349	299	\$13,294	426	11.663	493	1.1272	219	0.1800	391	52.34	492	2.22	334	\$47,477
HOLLAND TWP	3035	447	4,585	4.2772	252	\$11,567	317	22.405	362	0.5921	360	0.1743	399	27.82	431	0.48	585	\$46,535
BETHLEHEM TWP	3036	448	3,174	2.8279	454	\$11,977	350	26.337	324	0.8232	294	0.0945	434	129.17	552	2.37	266	\$43,285
LAWALLETT BOROUGH	3037	449	2,185	4.5192	199	\$11,787	333	16.903	429	0.6256	353	1.0649	148	44.80	479	1.11	546	\$193,456
NORTH CALMELL BORO TWP	3039	450	1,265	4.0959	256	\$17,551	524	16.107	434	0.2980	505	0.6319	523	-4.93	132	2.34	195	\$46,290
HALL TWP	3041	451	19,492	3.2099	404	\$11,405	302	22.359	344	0.5150	401	0.1899	393	19.36	392	2.00	409	\$47,585
MIDDLETON TWP	3049	452	67,800	3.1494	415	\$13,264	425	19.836	397	0.3247	415	0.3212	308	24.27	418	2.29	305	\$40,761
NORWOOD BORO	3052	453	4,545	4.3251	225	\$14,958	475	26.791	317	0.4500	416	0.0800	443	3.54	263	2.11	400	\$75,252
CLARK TWP	3054	454	16,021	3.4591	358	\$13,287	424	7.450	533	0.7853	492	0.0470	485	-12.79	51	2.20	320	\$40,314
EDISON TWP	3064	455	79,331	3.4644	331	\$12,955	401	0.421	520	0.5923	359	0.2710	335	10.19	379	2.19	353	\$47,953
EAST WINDSOR TWP	3065	456	22,682	3.3303	386	\$12,412	383	2.538	544	0.4422	423	0.1279	432	93.27	337	2.76	112	\$33,300
MANCHESTER TWP	3066	457	32,531	4.4261	207	\$10,242	208	1.822	545	0.0480	549	0.3250	304	330.87	565	1.82	401	\$30,102
HARBOR TWP	3079	458	24,305	3.0000	426	\$13,174	410	11.071	506	2.3491	59	0.0699	481	90.04	539	2.30	303	\$44,660
NEWFORD LAKES BORO	3078	459	5,175	1.1819	557	\$13,140	412	13.474	445	0.3322	465	0.0966	454	7.99	314	2.30	244	\$20,662
WAYNE TWP	3107	460	68,950	3.4900	349	\$13,617	437	11.339	490	0.3005	405	0.1430	419	-6.37	230	2.35	274	\$33,272
INTERLAKEN BOROUGH	3114	461	991	2.0408	518	\$17,029	516	62.432	42	0.2323	503	0.0000	553	-16.16	26	1.48	523	\$58,697
TENNYLY BORO	3115	462	13,400	2.3712	490	\$20,349	346	39.573	297	0.4419	424	0.0471	514	-9.57	104	2.25	322	\$42,368
PENPACK-GLANSTONE BORO	3116	463	2,118	2.5122	491	\$16,127	503	37.817	50	2.156	95	0.0000	553	10.00	329	1.21	539	\$143,313
LITTLE SILVER BORO	3119	464	3,442	3.1592	613	\$17,319	521	22.799	339	0.1605	532	0.0104	535	-9.43	109	2.49	210	\$30,518
NORTHVALE BORO	3121	465	3,022	3.0177	433	\$11,990	390	19.129	468	0.3945	443	0.0199	530	-2.99	202	2.21	342	\$43,871
GREEN TWP	3123	466	2,999	2.5701	484	\$11,595	318	19.841	396	0.3968	442	0.0800	470	86.00	531	2.44	233	\$35,307
MOUNT OLIVE TWP	3126	467	19,290	2.9462	442	\$11,959	347	12.444	479	0.5905	361	0.1762	397	85.66	529	2.31	293	\$38,112
NEW PROVIDENCE BORO	3129	468	12,357	2.6252	677	\$16,831	511	13.126	474	0.5914	358	0.8243	525	-10.43	89	2.41	252	\$40,917
PARSIPPANY-TROY HILLS TWP	3133	469	49,456	3.1267	421	\$13,100	419	0.999	522	0.3263	393	0.1042	447	-10.26	91	2.06	415	\$36,234
DEWILLE TWP	3161	470	14,157	3.4980	347	\$13,519	433	24.134	344	0.2785	494	0.0563	498	0.00	245	2.16	372	\$33,642
RARITAN TWP (HUNT.)	3161	471	10,053	2.0180	456	\$13,905	447	24.273	343	1.0915	233	0.2180	371	44.90	480	2.19	350	\$44,620
LAWRENCE TWP (MERCER)	3166	472	22,804	3.0728	627	\$13,509	432	24.034	346	0.5071	402	0.1086	392	16.54	371	2.19	309	\$36,610
RAMSEY BORO	3148	473	13,161	4.0420	260	\$15,210	404	24.745	337	0.2349	508	0.0201	526	4.69	202	3.37	267	\$48,873
SPARTA TWP	3160	474	13,838	2.6175	476	\$14,457	461	21.437	372	0.7140	325	0.0723	400	27.90	432	2.49	214	\$31,500
SPRINGFIELD TWP (UNION)	3162	475	13,944	3.3545	301	\$15,908	497	14.040	440	0.1959	521	0.1004	452	-11.41	71	2.25	324	\$46,104
SPRING LAKE BORO	3174	476	4,173	3.9412	287	\$15,370	486	53.051	86	0.2347	310	0.0959	425	7.11	300	1.82	526	\$16,407
CHESTER BOROUGH	3183	477	1,477	1.9917	524	\$13,157	416	41.953	182	0.4310	354	0.0000	553	15.24	366	2.32	291	\$77,007
RAMSOLPH TWP	3187	478	10,619	3.4135	363	\$13,082	470	10.641	505	0.3680	372	0.0913	439	40.03	466	2.63	159	\$40,531
KANALAPAN TWP	3190	479	23,448	3.3537	339	\$12,481	395	7.273	536	0.4821	334	0.0713	520	66.90	507	2.36	268	\$39,653
FORT LEE BOROUGH	3204	480	32,786	4.0502	264	\$18,109	531	12.093	476	1.4991	157	0.0441	489	7.04	307	1.74	492	\$73,494

MUNICIPAL DISTRESS, New Jersey --(in distress rank order)

Municipality	Total Rank	Composite Rank	1985 Population	Percent Unemployed 1986 Rank	Per Capita Income 1983 Rank	Pre-Housing 1980 Rank	Sub-Standard Housing 1980 Rank	1987 A.F.D.C. % of 1983 Pop. Rank	Pop. Rate of Change 1970-85 Rank	Equalized Tax Rate 83-85 Avg Rank	Equalized Value Per Cap 1986
MORRIS PLAINS BORO	3204	401	9,099	3.6413% 323	\$13,643 482	27,238 312	0.4341% 431	0.1549% 411	4.84% 286	1.94 447	490,35
CANTHAM BOROUSH	3210	482	8,282	1.8604% 532	\$10,174 533	39,907 203	0.3411% 459	0.0000% 553	-13.42% 45	2.03 428	643,61
GREEN BROOK TWP	3245	483	4,583	2.6629% 473	\$12,742 395	14,610 451	0.2131% 517	0.2400% 359	6.33% 302	2.20 306	661,77
WASHINGTON TWP (MORRIS)	3253	404	13,834	2.9564% 441	\$13,234 421	23,324 351	0.8164% 301	0.1064% 448	98.71% 540	2.20 343	833,01
STONE HARBOR BOROUSH	3253	485	1,360	7.1933% 53	\$12,545 389	19,651 399	0.6536% 344	0.0000% 553	20.11% 390	0.93 554	942,58
HARDTH BORO	3269	486	3,432	3.1133% 423	\$16,851 512	36,139 239	0.0000% 561	0.0000% 553	-8.72% 118	2.15 382	670,85
READINGTON TWP	3270	487	11,267	2.2937% 502	\$13,441 433	24,704 339	1.0363% 245	0.1331% 420	46.33% 403	2.03 424	454,56
BARNBET LIGHT BORO	3274	498	665	4.6154% 189	\$14,499 443	12,500 487	0.2959% 487	1.0524% 141	20.04% 377	0.92 556	628,51
WINSON BORO	3294	499	7,586	2.4063% 480	\$22,526 556	38,182 210	0.2350% 511	0.1083% 449	-0.47% 235	2.19 347	800,20
WALTON LAUREL TWP	3295	490	22,777	2.6494% 474	\$12,975 404	4,270 546	1.0152% 249	0.2631% 380	102.99% 544	2.17 347	642,42
HARRINGTON PARK BORO	3298	491	4,612	2.5472% 487	\$16,329 503	27,091 314	0.2759% 548	0.0000% 553	-9.73% 101	2.37 263	661,34
BRIDGEWATER TWP	3309	492	20,493	2.3571% 499	\$15,004 479	12,292 487	0.3119% 476	0.1533% 413	-3.10% 177	2.26 310	644,54
MALLENDALE BOROUSH	3310	493	4,676	3.3820% 379	\$19,833 542	27,562 310	0.0000% 561	0.0494% 507	-2.43% 203	2.26 319	674,75
BRIGANTINE CITY	3316	494	9,327	4.3580% 196	\$12,020 353	2,705 543	0.2934% 489	0.5963% 216	44.30% 477	1.33 532	675,63
HILLBURN TWP	3321	495	19,521	2.2371% 504	\$27,238 562	41,834 183	0.2829% 493	0.0461% 512	-7.44% 144	2.13 393	6105,33
WOPPELL TWP (MERCER)	3322	496	11,040	2.1243% 514	\$15,808 496	23,774 348	0.9106% 277	0.0000% 553	10.07% 328	2.16 349	666,14
WASHINGTON TWP (MERCER)	3328	497	10,140	3.5727% 337	\$14,253 456	5,779 550	0.1101% 534	0.0197% 531	-4.04% 189	2.23 332	631,07
CLINTON TWP	3328	498	9,099	2.5047% 483	\$13,381 429	25,136 333	1.3134% 183	0.1099% 446	77.75% 521	1.09 444	665,77
BERNARDSVILLE BORO	3349	499	4,673	1.7443% 538	\$21,637 551	40,492 193	0.6413% 347	0.1049% 451	-0.35% 241	1.65 308	694,66
ROCKLEIGH BORO	3350.5	500	180	0.0000% 564.5	\$14,234 454	31,563 93	0.0000% 561	0.0000% 553	-30.94% 5	0.76 560	674,51
CRESSKILL BOROUSH	3360	501	7,611	1.9566% 525	\$14,998 477	25,451 329	0.0892% 546	0.0526% 508	-8.28% 128	2.14 391	645,19
RIVER VALE TWP	3362	502	9,812	3.6742% 315	\$16,388 507	9,538 518	0.2362% 509	0.0510% 504	10.44% 332	2.45 230	660,25
BELMISTON TWP	3366	503	3,914	3.8967% 292	\$27,931 543	42,589 176	0.9695% 262	0.0511% 503	50.71% 607	1.13 545	6125,01
FREDON TWP	3370	504	2,363	2.0016% 520	\$11,680 326	20,872 384	0.2759% 494	0.0000% 553	72.23% 513	2.44 241	642,89
HAHAJAH TWP	3371	505	13,951	3.1600% 411	\$15,450 490	22,867 358	0.4820% 333	0.2166% 372	20.25% 435	1.00 447	684,04
KIMMELON BOROUSH	3373	506	8,047	3.9211% 290	\$17,429 522	15,792 437	0.2547% 502	0.0000% 553	3.00% 295	2.27 315	644,46
ORADELL BORO	3374	507	8,447	3.5142% 344	\$17,476 523	24,715 336	0.1068% 542	0.0118% 557	-2.12% 176	1.98 433	670,06
ESSEX FIELDS TWP	3382	508	2,353	1.0551% 533	\$23,267 550	45,170 151	0.1355% 537	0.0000% 553	-7.32% 146	2.10 389	691,61
ALLANUCHY TWP	3383	509	2,049	0.0316% 570	\$18,491 535	14,703 450	0.7180% 324	0.2457% 349	150.35% 354	1.01 485	654,45
TRAVISTOCK BORO	3392.5	510	7	0.0000% 564.5	\$9,851 165	8,000 567	0.0000% 561	0.0000% 553	-41.67% 4	2.06 410	6354,00
MONTVALE BORO	3403	511	7,590	4.1014% 254	\$16,074 502	16,983 427	0.3017% 482	0.0791% 473	3.39% 269	1.90 464	6107,90
BRITELLE BOROUSH	3406	512	4,437	3.4690% 352	\$19,229 485	19,377 481	0.1251% 530	0.3608% 297	23.44% 414	1.87 468	662,79
SPRING LAKE HEIGHTS BORO	3410	513	9,467	3.3987% 344	\$13,563 435	13,748 440	0.2453% 506	0.0915% 457	10.80% 385	1.97 439	646,20
MONTGOMERY TWP	3416	514	7,970	1.9189% 528	\$14,664 476	21,290 378	1.1080% 225	0.0678% 444	23.45% 422	1.95 441	672,01
TEKESBURY TWP	3419	515	4,257	1.5016% 549	\$25,449 540	36,190 230	1.3981% 170	0.0470% 511	63.07% 475	2.07 413	693,73
OLD TAPPAN BORO	3426	516	4,382	4.6341% 180	\$15,437 489	13,709 461	0.0841% 548	0.1111% 442	11.07% 347	1.91 462	675,51
PASSAIC TWP (MORRIS)	3434	517	7,519	1.2459% 534	\$13,383 487	30,482 275	0.2095% 518	0.0665% 487	1.70% 251	2.06 416	641,70
PARAMUS BORO	3438	518	24,190	3.3951% 348	\$13,338 428	8,015 531	0.3500% 455	0.0534% 499	-7.67% 130	1.85 509	687,31
VOORHEES TWP	3444	519	29,434	1.6660% 543	\$13,758 442	6,055 547	0.2258% 513	0.1841% 395	232.07% 560	2.33 197	635,30
LIVINGSTON TWP	3454	520	28,400	2.9041% 447	\$17,996 529	14,541 453	0.0581% 553	0.0649% 486	-5.73% 167	2.25 326	675,90
BOONTON TWP	3454	521	3,388	1.7099% 510	\$17,003 515	29,341 287	0.3510% 381	0.1676% 416	10.36% 350	1.50 513	667,90
LONGPORT BOROUSH	3460	522	1,254	3.9494% 285	\$14,381 459	12,253 489	0.0686% 590	0.3185% 311	2.53% 257	0.94 553	622,21
EDLTS NECK TWP	3466	523	8,187	4.6894% 187	\$17,134 519	13,354 467	0.5405% 385	0.0000% 553	39.23% 463	1.92 450	639,64
CHESTER TWP	3471	524	3,431	2.5487% 486	\$18,707 473	20,240 391	0.4419% 425	0.0104% 534	27.34% 428	2.34 282	662,61
EVESHAM TWP	3475	525	27,290	2.5982% 482	\$12,027 354	4,019 560	0.1424% 535	0.1612% 408	102.07% 543	2.13 381	632,01
MORRIS TWP (MIDDLESEX)	3478	526	19,253	3.4684% 353	\$13,848 446	9,448 516	0.9340% 272	0.0727% 479	110.71% 547	1.05 473	650,41
HARVEY CEDARS BORO	3482	527	380	5.1887% 141	\$12,075 356	14,206 455	0.3816% 448	0.0000% 553	23.37% 416	0.99 548	6389,91
NEEDHAM TWP	3491	528	19,853	2.4600% 494	\$13,147 413	11,574 494	0.2419% 507	0.1461% 417	139.45% 594	2.20 344	637,01

MUNICIPAL DISTRESS, New Jersey --(in distress rank order)

Mun. Code	Urban Level	Municipality	Total Rank	Composite Rank	1985 Population	Percent Unemployed		Per Capita Income		Pre-Housing		Sub-Standard Housing		1987 A.F.D.C. % of Pop.		Rate of Change		Equalized		Equalized Valuation	
						1984	Rank	1983	Rank	1980	Rank	1980	Rank	1985	Rank	1970-85	Rank	83-85 Avg	Rank	1984	Rank
1517	3	LONG BEACH TWP	3493	529	3,741	5.5062	118	813,623	436	12,920	475	0.5309	384	0.0267	524	28.56	439	0.92	535	4373,322.59	542
209	3	DEWARST BOROUG	3513	530	4,951	2.4719	493	819,850	543	21,072	382	0.0449	351	0.0202	529	-3.55	193	2.20	346	848,647.36	474
1025	3	UNION TWP (MANTERSBORO)	3513	531	3,855	1.2042	554	814,839	471	20,407	392	0.0700	283	0.0519	362	63.97	563	1.93	452	445,141.34	354
2010	3	MOUNTAINSIDE BORO	3533	532	7,070	3.4457	354	819,523	539	10,751	504	0.1670	520	0.0545	497	-3.00	145	1.93	450	878,544.75	494
2601	3	BERKELEY HEIGHTS TWP	3541	533	12,563	5.3963	349	817,786	528	13,821	459	0.1049	522	0.0079	530	-3.76	193	2.62	433	481,745.62	499
1010	3	MILLSBOROUGH TWP	3542	534	22,452	2.0232	519	813,844	443	14,372	507	0.4349	430	0.1509	409	104.79	540	2.27	310	647,246.73	373
1310	3	PRINCETON TWP	3552	535	14,202	2.1030	509	820,947	540	14,854	447	0.4318	451	0.0434	490	0.44	275	1.94	444	874,716.16	400
718	3	ROSELAND BOROUG	3556	536	9,470	2.7700	457	817,940	517	19,000	410	0.3254	471	0.1273	433	23.47	413	2.21	340	809,430.69	513
1422	3	MORRIS TWP	3572	537	19,739	2.7543	441	810,534	536	23,950	347	0.5216	397	0.0507	505	0.04	321	1.85	400	597,494.20	325
220	2	HONKUS BORO	3577	538	4,044	1.8274	534	821,440	530	31,620	266	0.2181	516	0.0000	553	-4.44	140	1.75	491	383,524.45	527
1410	3	EAST HANOVER TWP	3592	539	9,544	3.0942	424	812,516	387	16,220	451	0.4200	423	0.0038	447	23.40	412	1.43	511	499,594.82	347
1313	3	WEST MINNSON TWP	3594	540	9,700	1.9242	524	813,579	492	16,324	417	0.4373	429	0.0722	481	30.83	480	2.33	286	610,809.78	475
1319	3	HANTOKING BOROUG	3594	541	445	0.3953	541	820,619	544	44,626	150	0.0000	561	0.0999	140	39.50	444	0.73	562	854,892.21	544
3502	3	DRY HEAD BOROUG	3605	542	1,318	2.8570	459	814,351	457	40,393	120	0.1770	524	0.0000	553	21.78	440	1.10	543	819,287.44	353
1070	3	WARREN TWP (ISHERSET)	3620	543	9,046	2.0099	454	817,672	526	21,853	347	0.2277	512	0.0914	450	14.59	340	1.94	440	807,745.86	501
503	3	CAPE MAY POINT BORO	3642	544	201	1.4599	550	810,561	240	44,742	163	0.0000	561	0.0000	553	37.73	450	0.81	559	823,956.65	358
740	3	MOGOCLEFF LAKE BORO	3645	545	5,504	2.9197	445	819,698	541	17,679	422	0.0600	552	0.0350	520	1.42	240	2.11	349	893,435.10	510
270	3	WYCKOFF TWP	3647	546	13,739	2.6104	479	817,449	525	17,072	425	0.2071	519	0.0000	553	-1.07	217	1.95	442	873,549.19	487
1410	3	HENDON BOROUG	3647	547	5,170	2.8954	448	816,953	513	23,643	350	0.4403	427	0.0193	532	30.84	441	2.01	435	871,622.12	481
1333	3	MOUNDTH BEACH BORO	3647	548	3,543	2.4391	474	820,245	545	16,994	426	0.4494	426	0.2244	367	70.58	519	2.03	429	845,133.70	443
1344	3	SEA BIRT BORO	3648	549	2,439	2.1754	510	810,001	530	31,539	267	0.3394	440	0.1514	413	19.57	394	1.31	335	816,047.47	530
1421	3	MONTVILLE TWP	3644	550	15,017	2.7453	440	814,872	472	20,029	393	0.3803	444	0.0400	516	20.77	426	1.81	404	844,811.87	449
1002	3	BERNARDS TWP	3644	551	13,971	2.7042	503	810,110	532	19,921	395	0.1850	523	0.0707	474	3.01	207	1.95	443	804,772.58	509
1412	3	HANOVER TWP	3647	552	11,943	2.1619	511	813,923	440	13,561	444	0.4160	434	0.1423	421	11.62	342	1.40	521	894,710.42	524
202	3	ALPINE BOROUG	3673	553	1,614	3.7851	302	839,044	547	20,874	297	0.3074	447	0.0000	553	20.24	399	0.95	551	823,208.49	357
301	3	VALON BOROUG	3685	554	2,334	4.0190	200	813,413	430	10,751	503	0.1772	525	0.2140	374	82.07	526	0.87	550	8371,014.54	541
1005	3	BRANCHBURG TWP	3687	555	8,410	2.1072	515	814,340	450	17,997	419	0.3240	474	0.1514	412	44.46	402	1.92	437	847,097.97	470
1413	3	HARDING TWP	3737	556	3,405	1.5452	546	837,831	546	30,007	221	0.1761	527	0.0507	496	4.00	205	0.97	549	8181,488.50	547
250	3	SADDLE RIVER BORO	3751	557	2,000	3.8301	314	830,578	545	19,533	402	0.3300	444	0.0344	522	10.51	381	0.95	552	8194,448.49	351
263	3	UPPER SAMBLE RIVER BORO	3747	558	7,767	2.8571	450	821,921	553	6,953	541	0.3433	450	0.0374	517	0.25	239	1.70	406	894,409.82	523
1419	3	HENDON TWP	3799	559	4,564	2.0009	521	821,797	532	23,172	355	0.2761	495	0.0219	527	23.45	413	2.04	417	894,540.54	519
1411	3	FLORENCE PARK BOROUG	3810	560	10,341	2.8511	451	814,613	445	13,631	462	0.1649	529	0.0193	533	10.54	334	1.50	510	897,510.73	326
1405	3	CHATHAM TWP	3845	561	9,999	2.0499	516	822,177	554	15,510	441	0.2644	499	0.0000	553	12.43	354	1.93	440	872,004.73	483
1021	3	WYCKHURST BOROUG	3879	562	9,340	1.5999	543	821,123	549	14,557	430	0.1197	539	0.0753	477	11.50	341	1.04	477	894,179.12	521
216	2	ENGLEWOOD CLIFFS BORO	3888	563	5,741	2.3954	497	819,129	538	10,051	512	0.2246	514	0.0174	536	-3.32	190	1.10	547	8150,144.70	544
262	2	PETERBORO BORO	4014.8	564	22	0.0000	544.8	814,134	452	20,000	394	0.0000	561	0.0000	553	13.74	348	0.90	557	80,070,808.50	547
1310	3	MILMEL TWP	4037	565	9,753	2.7021	440	819,444	540	9,861	514	0.2609	501	0.0710	482	39.47	500	1.55	516	891,727.30	516
220	3	FRANKLIN LAKES BORO	4073	566	9,433	2.7444	444	824,033	539	12,417	480	0.1169	540	0.0000	553	21.59	430	1.54	516	8100,824.49	333
1210	3	PLATTSBORO TWP	4090	567	9,040	1.9227	527	810,200	534	6,613	544	0.4142	430	0.0774	475	440.54	564	1.71	490	303,944.23	500

ATTACHMENT E ANNOTATED KEY A « Available

for development, or developable

U -= Unavailable for development; undevelopable

UP •* Pinelands

UH = Hackensack Meadowlands UCW «

Coastal Wetlands UB = Beach,

waterward of dunes UD = Developed

area

UF «= Federal open space and recreation areas, including
military

UIP = Interstate park

USP «= State parks and forests

UF6 = Fish, Game & Wildlife areas

UNA «= Natural Area

UNT = Natural Lands Trust

UWR >= Division of Water Resources

UCP *= County park

UWM « Watershed Management Area

UMP « Municipal park

XITC * Transportation corridor - 4 lane and greater highways;
rail complexes; airports. Roads are included as part
of "U"-type polygons (except roads less than 4 lanes
bisecting or surrounded by an "A"ⁿ-type polygon).

UHW « Hazardous Waste Site

USW = Solid Waste Disposal Site

UCS «= Critical Slope (greater than 15%)

USL « Stream corridors, lakes and freshwater wetlands

ATTACHMENT F

ESTIMATES OF DEVELOPABLE, DEVELOPED, & UNDEVELOPABLE LAND BY TIER

(in acres)
January, 1989

COUNTY		TOTAL	Tier 1	Tier 2	Tier 3	Tier 4	Tier 5	Tier 6A	Tier 6B	Tier 7
* ENTIRE STATE	Total	4,791,885	179,279	565,043	91,388	368,539	425,782	402,268	350,340	584,397
	Developed	803,077	140,414	378,805	48,568	102,927	43,816	16,586	13,876	50,498
	Available	1,456,951	9,681	58,314	23,690	173,641	197,732	400,840	281,946	277,021
	Undevelopabl	2,531,857	29,184	131,977	26,837	94,783	185,957	0	58,348	257,449
* ATLANTIC	Total	362,861	0	0	957	1,064	0	3,015	209	0
	Developed	557	0	0	479	0	0	78	0	0
	Available	4,426	0	0	494	0	0	3,747	185	0
	Undevelopabl	357,878	0	0	0	1,064	0	0	24	0
* BERGEN	Total	150,125	11,527	86,987	0	10,326	15,704	0	0	8,712
	Developed	98,194	6,978	75,626	0	5,629	9,863	0	0	98
	Available	9,650	37	2,514	0	2,062	1,997	0	0	3,040
	Undevelopabl	42,281	4,512	8,847	0	2,635	3,844	0	0	5,574
* BURLINGTON	Total	523,290	7,796	27,201	12,550	43,236	28,878	48,316	6,531	132
	Developed	41,218	5,631	20,412	2,879	4,502	1,764	2,077	224	0
	Available	106,104	1,201	4,286	908	12,899	10,211	36,089	6,416	200
	Undevelopabl	375,968	964	2,503	8,763	25,835	16,903	10,150	0	0
* CAMDEN	Total	142,086	30,958	26,974	9,541	18,622	1,954	0	441	2,122
	Developed	52,568	24,733	23,370	2,584	1,478	161	39	0	203
	Available	23,154	3,488	7,120	1,149	3,445	2,288	2,864	378	2,422
	Undevelopabl	66,364	2,737	0	5,808	13,699	0	0	63	0
* CAPE MAY	Total	168,557	0	215	0	760	172	0	0	2,085
	Developed	925	0	236	0	615	74	0	0	0
	Available	2,213	0	45	0	842	1,326	0	0	0
	Undevelopabl	165,419	0	0	0	0	0	0	0	2,085
* CUMBERLAND	Total	321,107	0	0	19,288	9,658	24,017	41,962	20,305	18,985
	Developed	17,627	0	0	10,600	1,861	1,328	2,908	737	193
	Available	96,377	0	0	5,172	4,585	16,794	41,486	15,666	12,674
	Undevelopabl	207,103	0	0	3,516	3,212	5,895	0	3,902	6,118

COUNTY		TOTAL	Tier 1	Tier 2	Tier 3	Tier 4	Tier 5	Tier 6A	Tier 6B	Tier 7
ESSEX	Total	81,562	33,674	39,975	0	0	1,209	0	0	3,447
	Developed	58,185	30,556	27,583	0	0	0	0	0	46
	Available	3,814	356	3,458	0	0	0	0	0	0
	Undevelopabl	19,563	2,762	8,934	0	0	1,209	0	0	3,401
* GLOUCESTER	Total	210,150	3,252	15,158	10,567	47,169	45,077	24,854	18,033	10,201
	Developed	32,299	2,739	6,712	8,383	11,805	949	660	958	93
	Available	104,967	169	2,021	5,913	16,723	12,353	49,182	17,357	1,249
	Undevelopabl	72,884	344	6,425	0	18,641	31,775	0	0	8,859
* HUDSON	Total	29,709	23,856	121	243	0	0	0	0	0
	Developed	18,196	17,604	592	0	0	0	0	0	0
	Available	505	505	0	0	0	0	0	0	0
	Undevelopabl	11,008	5,747	0	243	0	0	0	0	0
HUNTERDON	Total	274,944	0	0	8,277	13,990	23,310	69,661	79,326	72,390
	Developed	19,385	0	0	3,336	3,096	2,862	2,422	2,533	5,136
	Available	184,594	0	0	2,542	7,467	14,475	64,147	54,750	41,213
	Undevelopabl	70,965	0	0	2,399	3,427	5,973	3,092	22,043	26,041
MERCER	Total	144,640	4,898	35,472	1,757	35,282	27,195	18,383	7,898	1,762
	Developed	44,804	3,935	25,624	857	9,377	2,640	1,994	320	57
	Available	79,755	105	5,560	779	26,138	20,619	19,744	5,815	995
	Undevelopabl	20,081	858	4,288	121	0	3,936	0	1,763	710
MIDDLESEX	Total	199,040	14,580	91,256	549	37,136	38,288	2,447	896	5,421
	Developed	88,595	10,939	64,008	488	10,935	2,071	0	0	154
	Available	64,223	1,025	10,160	33	28,056	19,760	2,401	0	2,788
	Undevelopabl	46,222	2,616	17,088	28	0	16,457	46	896	2,479
MONMOUTH	Total	301,804	5,483	37,840	4,326	41,007	37,261	23,597	37,827	46,433
	Developed	73,830	4,063	29,320	4,254	18,593	5,261	711	3,218	8,410
	Available	126,344	990	5,757	841	15,717	24,961	18,070	31,549	28,459
	Undevelopabl	101,630	430	2,763	0	6,697	7,039	4,816	3,060	9,564
MORRIS	Total	300,953	3,242	102,302	2,480	14,198	44,714	0	9,887	133,824
	Developed	77,197	2,011	43,190	810	4,956	8,101	0	275	17,854
	Available	101,320	281	7,367	289	4,855	18,170	0	8,894	61,464
	Undevelopabl	122,436	950	51,745	1,381	4,387	18,443	0	718	54,506

COUNTY		TOTAL	Tier 1	Tier 2	Tier 3	Tier 4	Tier 5	Tier 6A	Tier 6B	Tier 7
* OCEAN	Total	407,738	4,137	0	0	12,716	10,370	7,470	6,520	4,871
	Developed	7,937	2,504	0	0	3,368	232	367	561	905
	Available	30,200	872	0	0	9,375	4,990	6,110	5,337	3,516
	Undevelopabl	369,601	761	0	0	0	5,148	993	622	450
PASSAIC	Total	122,886	7,510	33,653	5,582	7,786	2,284	0	0	46,666
	Developed	33,732	7,309	20,029	1,883	2,526	260	0	0	1,725
	Available	19,433	84	2,853	826	2,398	980	0	0	12,292
	Undevelopabl	69,721	117	10,771	2,873	2,862	1,044	0	0	32,649
* SALEN	Total	221,798	0	0	4,533	0	46,159	81,587	22,314	11,048
	Developed	8,246	0	0	5,436	0	526	1,999	285	0
	Available	126,850	0	0	2,290	0	1,125	97,967	25,468	0
	Undevelopabl	86,702	0	0	0	0	44,508	0	0	11,048
SOMERSET	Total	195,552	6,079	22,159	405	62,975	45,000	29,322	3,084	17,906
	Developed	51,779	3,397	12,955	253	22,637	4,199	2,191	146	2,143
	Available	101,345	284	5,932	107	30,544	32,451	19,713	2,413	9,709
	Undevelopabl	42,428	2,398	3,272	45	9,794	8,350	7,418	525	6,054
SUSSEX	Total	336,698	0	0	5,838	2,370	21,371	35,727	68,927	117,516
	Developed	21,782	0	0	3,818	632	2,976	868	1,671	11,817
	Available	146,577	0	0	1,271	797	8,765	26,928	50,048	58,768
	Undevelopabl	168,339	0	0	749	941	9,630	7,931	17,208	46,931
UNION	Total	65,875	20,291	44,632	0	0	0	0	0	0
	Developed	44,743	16,322	28,421	0	0	0	0	0	0
	Available	1,096	164	932	0	0	0	0	0	0
	Undevelopabl	20,036	3,805	15,279	0	0	0	0	0	0
WARREN	Total	231,392	1,996	1,098	4,495	10,244	12,819	15,927	68,142	80,876
	Developed	11,278	1,693	727	2,508	917	549	272	2,948	1,664
	Available	124,004	120	309	1,076	7,738	6,467	12,392	57,670	38,232
	Undevelopabl	96,110	183	62	911	1,589	5,803	3,263	7,524	40,980

* NOTE: Areas within the jurisdictions of the Pinelands Commission, Hackensack Meadowlands Development Commission, and the Coastal Area Facilities Review Act (CAFRA) were excluded from this Available and Developed Land exercise.