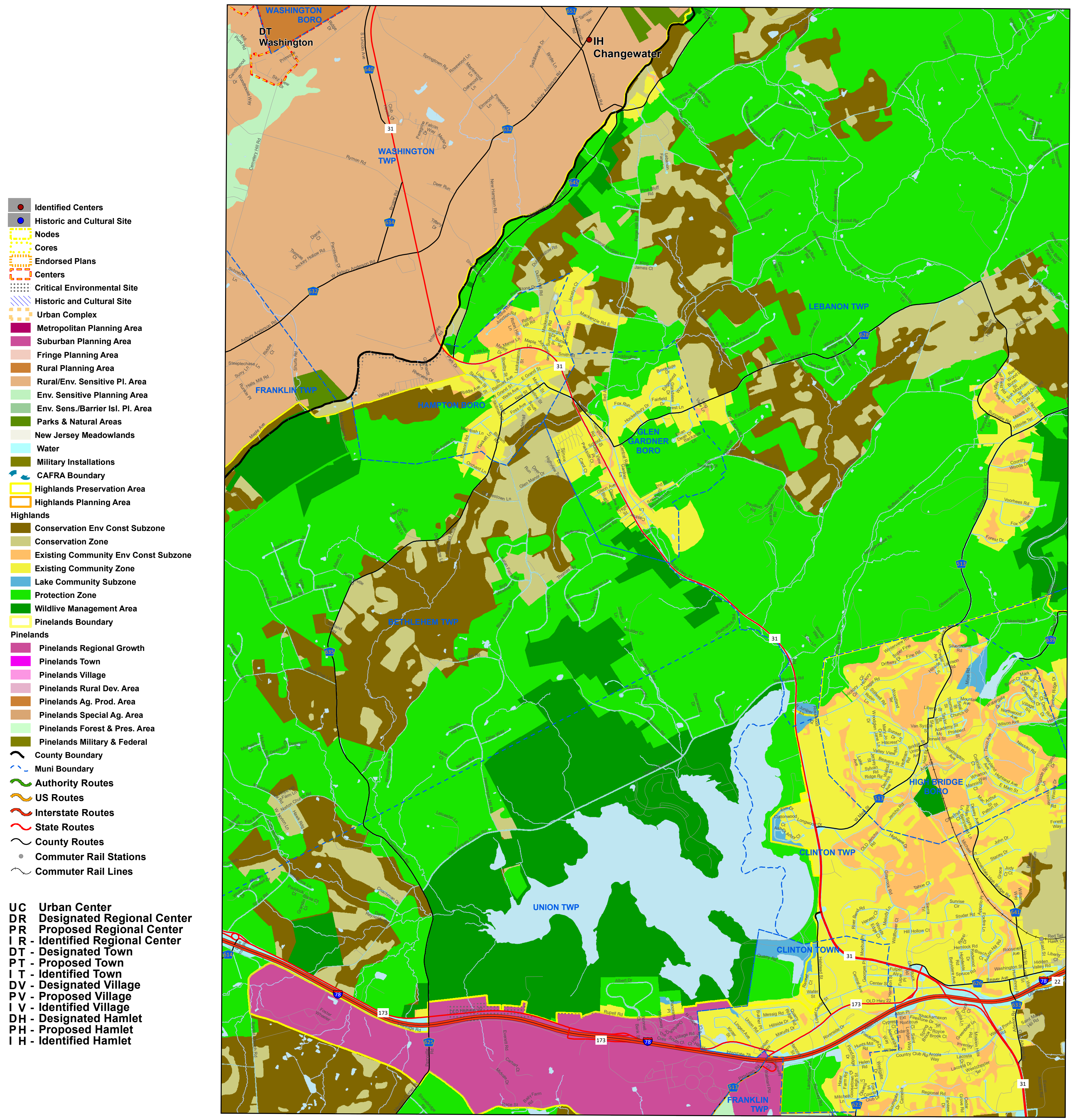


Policy Map of the State Development and Redevelopment Plan

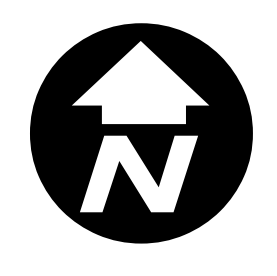
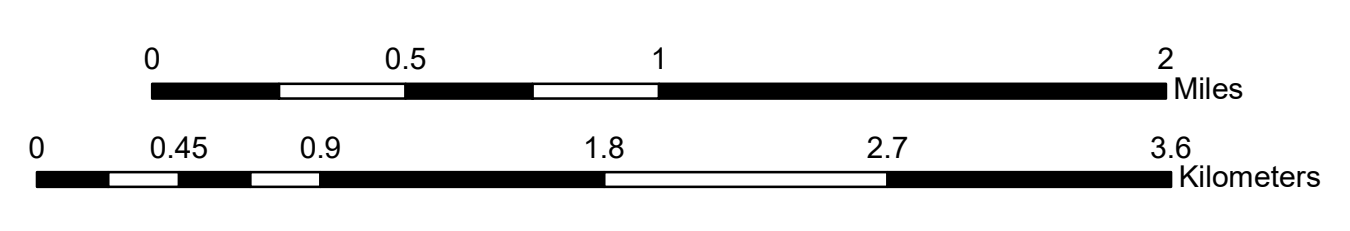
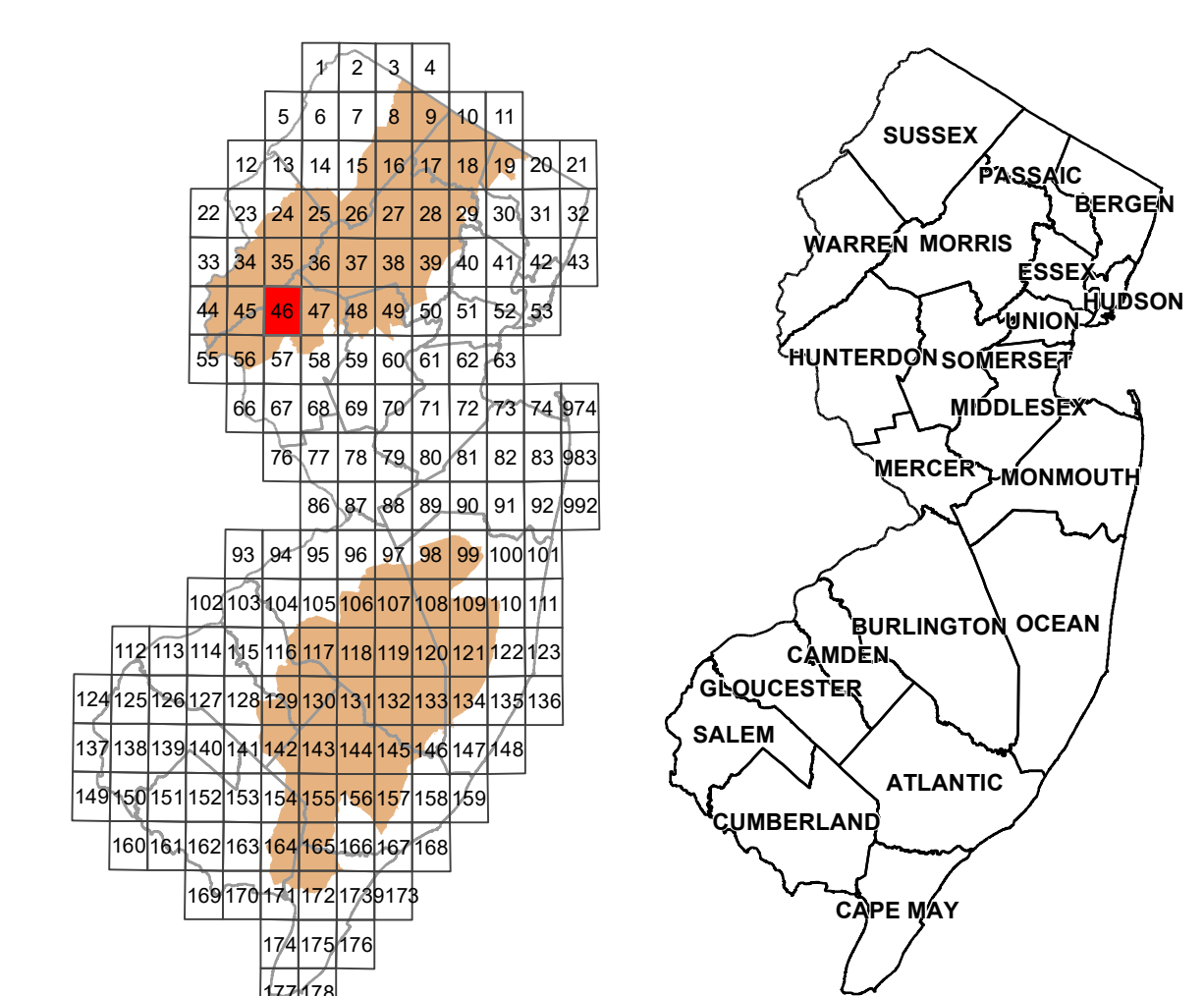
The State Plan is not itself a regulation but a statement of State policy that has been adopted by the State Planning Commission pursuant to statute to guide State, regional and local agencies in the exercise of their statutory authority.

New Jersey State Planning Commission December 14, 2020

Map prepared by the New Jersey Office for Planning Advocacy. Map was developed in part using digital data from the New Jersey Department of Environmental Protection, New Jersey Department of Transportation, New Jersey Highlands Council and the New Jersey Pinelands Commission. New Jersey State Plane Coordinate System, North American Datum 1983 (NAD83).



- UC - Urban Center
- DR - Designated Regional Center
- PR - Proposed Regional Center
- IR - Identified Regional Center
- DT - Designated Town
- PT - Proposed Town
- IT - Identified Town
- DV - Designated Village
- PV - Proposed Village
- IV - Identified Village
- DH - Designated Hamlet
- PH - Proposed Hamlet
- IH - Identified Hamlet



I certify that this quadrangle of the State Plan Policy Map was adopted and approved by the New Jersey State Planning Commission on December 14, 2020.

Donna Rendeiro
Donna Rendeiro, Secretary