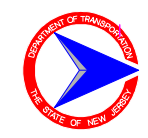


# New Jersey Department of Transportation Organization Chart



**Mission Statement:** "Improving Lives by Improving Transportation."  
View our latest organization chart online at:  
[www.njdot.nj.gov/about/](http://www.njdot.nj.gov/about/)

**Commissioner**  
Diane Gutierrez-Scaccetti

**Chairman of the Board  
NJ Transit**  
Diane Gutierrez-Scaccetti

**The Commissioner serves in an ex-officio capacity for the following agencies:**

- New Jersey Transit Corporation (Chair)
- New Jersey Transportation Trust Fund Authority (Chair)
- Delaware Valley Regional Planning Commission
- New Jersey Motor Vehicle Commission
- New Jersey Redevelopment Authority
- New Jersey Turnpike Authority
- North Jersey Transportation Planning Authority
- South Jersey Transportation Authority
- South Jersey Transportation Planning Organization

**The Commissioner is also**

- Chairman of the Board, New Jersey Transit Corporation
- Chairman of the Board, New Jersey Transportation Trust Fund Authority
- Chairman of the Board, New Jersey Turnpike Authority
- Chairman of the Board, South Jersey Transportation Authority

**Inspector General**  
Amalia McShane (Acting)

**Deputy Commissioner**  
Joseph D. Bertoni

**Legal Services**  
Philip Espinosa

**Chief of Staff**  
Jay Jimenez

**Assistant Commissioner**  
Finance and Administration  
(Chief Financial Officer)  
Lewis Daidone

**Assistant Commissioner**  
Transportation Operations Systems & Support  
(Emergency Management Coordinator)  
Andrew Tunnard

**Senior Director**  
Sal Cowan (Acting)

**Senior Director**  
Michael Davis (Acting)

**Director Human Resources**  
Michele Shapiro

**Director Civil Rights & Affirmative Action/ EEO Officer**  
TBA

**Director Community & Constituent Relations**  
TBA

**Director Legislative, Administrative & Regulatory Actions**  
Susan Pigula (Acting)

**Director Communications**  
Stephen Schapiro

**Employee Relations**  
D. Barretts

**Contract Compliance**  
J. R. Overton

**Employee Operations**  
P. Vannozi

**Small & Disadvantaged Business Enterprise**  
L. Harper

**Employee Benefits and Services**  
J. Nelson

**ADA & Title VI Nondiscrimination**  
TBA

**Employee Classification and Performance**  
K. Jarszewski

**Affirmative Action**  
V. Tilghman-Ansley

**Recruitment and Appointments**  
K. Hutchinson

**Director Budget**  
Deborah Stevenson

**Director Accounting and Auditing**  
Barbara DeLucia

**Director Procurement**  
Anthony Genovese

**Director Information Technology**  
Gary Zayas

**Director Capital Investment and Program Coordination**  
Eric Powers

**Budget Analysis**  
R. Calderon

**Accounting Operations**  
T. Goodson

**Professional Services Procurement**  
K. Abbott

**IT Security and Services**  
D. Deveney

**Capital Program Development**  
J. Vari

**Program Analysis**  
G. Britton

**Accounting Operations**  
A. Rossi

**Construction Services Procurement**  
K. Daniels

**Applications Development & Systems Support**  
M. Dorsch

**Capital Program Coordination**  
S. Tomlinson

**Auditing**  
C. Breza

**Equipment, Materials & Supplies**  
D. Kern

**Information Management & Technology Ping.**  
C. Dey

**Traffic Operations North**  
M. Juliano

**Traffic Operations South**  
W. Patterson

**Statewide Incident/ Emergency Management and Transportation Security**  
M. Moran

**Director Mobility & Systems**  
Wasif Mirza

**Director Administrative Support**  
Michael Davis

**Equipment Engineering & Operations**  
A. Derrico

**Finance/Budget and Claims**  
C. Maciejunas

**Operations Systems Support**  
U. Dave

**Training**  
P. Oza

**Permits**  
P. Menz

**Facilities Planning & Engineering & Construction**  
M. DeAngelo

**Employee Safety**  
A. Nucci

**Bldg. Mgmt. Services**  
L. Kruger

**Division Director Operations North**  
Christopher Tomlin

**Division Director Operations Central**  
Christopher Feintheil

**Division Director Operations South**  
John Bystrycki

**Asst. Division Director North**  
F. Parete

**Asst. Division Director Central**  
A. Ennas

**Asst. Division Director South**  
G. Worek

**Operations Support and Engineering**  
J. Longworth

**Assistant Commissioner**  
Planning, Multimodal, and Grants Administration  
Michael Russo

**Assistant Commissioner**  
Capital Program Management  
(State Transportation Engineer)  
Snehal Patel

**Director Multimodal Services**  
Nicole Minutoli

**Director Local Aid & Economic Development**  
Laine Rankin

**Director Statewide Planning**  
Andrew Swords

**Director Environmental Resources**  
Elkins Green

**Aeronautics & Federal and State Safety Programs**  
TBA

**Local Aid Economic Development & Local Support**  
TBA

**Statewide Strategies**  
J. Lewis

**Environmental Program Resources & Project Support**  
L. Rappleye

**Maritime Resources, Freight Services & Multimodal Grants**  
G. Clifton

**Local Aid District 1**  
TBA

**Research**  
A. Gendek

**Environmental Services Support**  
M. Yousef

**Transportation Data and Support**  
TBA

**Local Aid District 2 Newark**  
TBA

**Safety, Bicycle and Pedestrian Programs**  
TBA

**Local Aid District 3**  
T. Berryman

**Local Aid District 4 Cherry Hill**  
S. Mikhael

**Director Highway & Traffic Design**  
(Deputy State Transp Engr)  
Robert Marshall

**Director Right of Way & Access Management**  
Victor Akpu

**Director Capital Program Support**  
Paul Schneider

**Director Project Management**  
A. Shah (Acting)

**Director Bridge Engineering & Infrastructure Mgt.**  
(Deputy State Transp Engr)  
Eddy Germain

**Director Construction Services & Materials**  
A. Balluch (Acting)

**Roadway Design Group 1**  
K. Ranganathan (Acting)

**Northern District**  
J. Miksits

**Major Access, Right of Way, Access Engineering & Outdoor Advertising**  
E. Schwartz

**Design Standards**  
W. Howard

**Executive Regional Manager Team A**  
S. Abuhuzelma

**Structural Design & Geotechnical Engineering**  
J. Dalal

**Roadway Design Group 2**  
M. Martynenko

**South District**  
M. Palmer

**Technical Support**  
D. Kook

**Landscape Architecture & Env. Solutions**  
J. Sweger

**Executive Regional Manager Team B**  
W. Birch

**Structural Evaluation & Bridge Management**  
G. Renman

**Traffic Engineering**  
J. Oplinger

**Closing**  
D. Hutchinson

**Program Management Office**  
TBA

**Executive Regional Manager Team C**  
T. Saylor

**Structural & Railroad Engr Services**  
TBA

**Pavement & Drainage Management and Technology**  
S. Gresavage

**Executive Regional Manager Team D**  
A. Shah

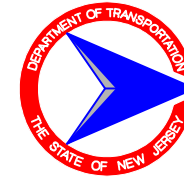
**Reg. Constr. Engineering North**  
(Deputy State Transp Engr)  
C. Roessner

**Reg. Constr. Engineering Central**  
J. Mesinger

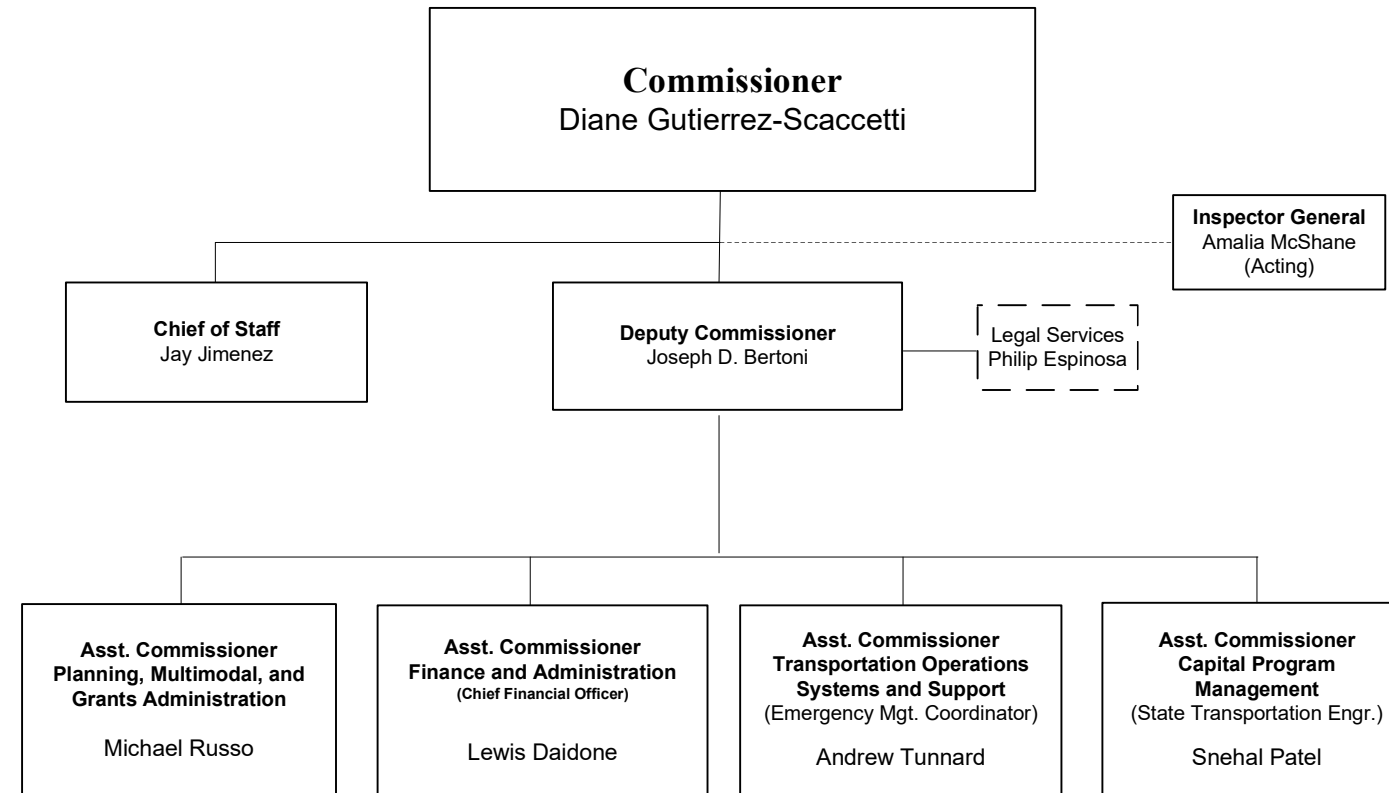
**Reg. Constr. Engineering South**  
C. Kneidinger



# New Jersey Department of Transportation Organization Chart



## Deputy Commissioner

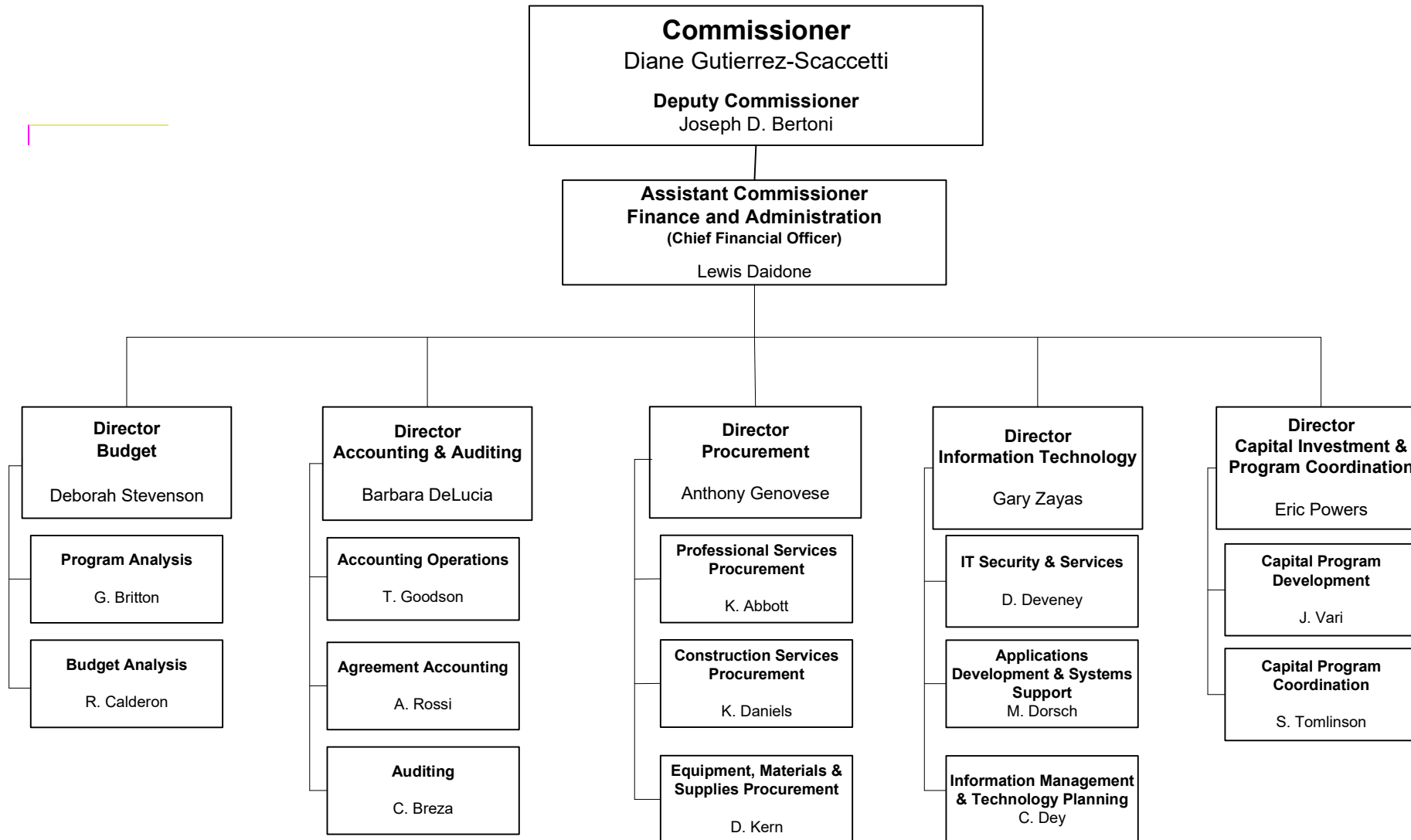




# New Jersey Department of Transportation Organization Chart

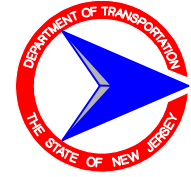


## Finance and Administration

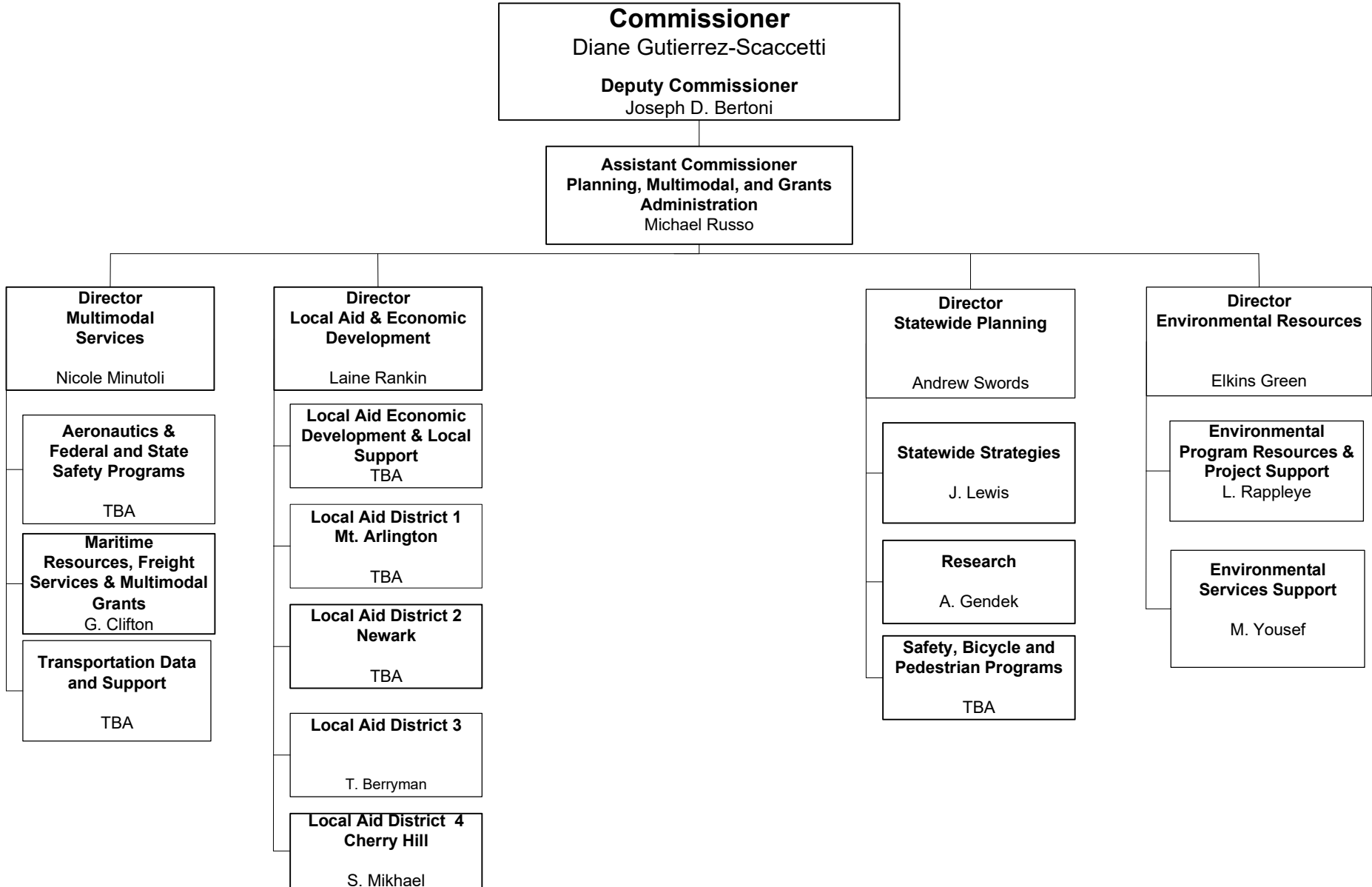




New Jersey Department of Transportation  
Organization Chart



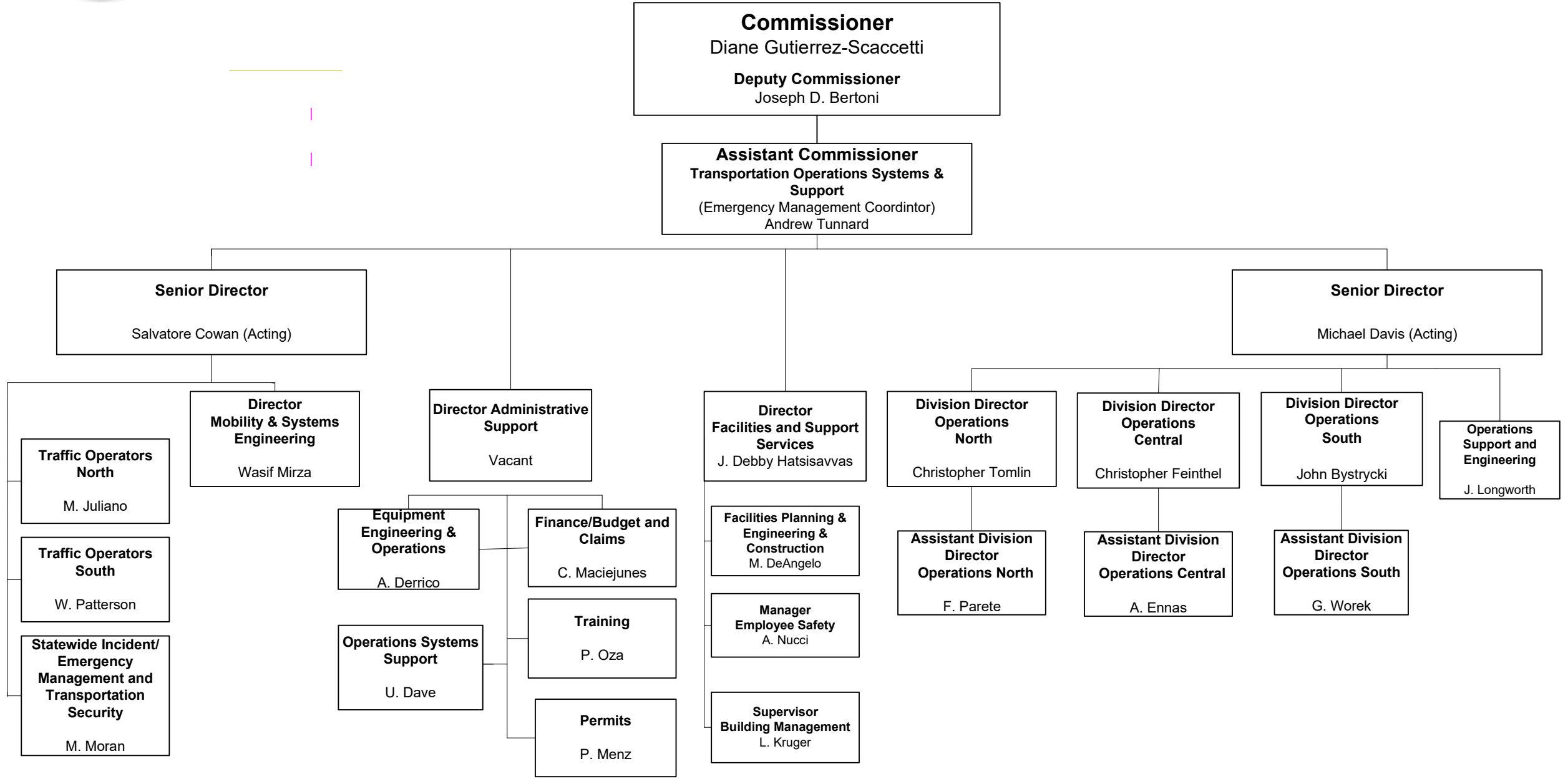
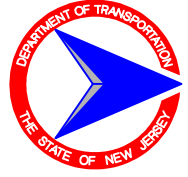
**Planning, Multimodal, and Grants Administration**





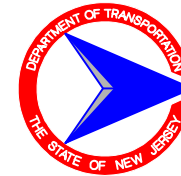
# New Jersey Department of Transportation Organization Chart

## *Transportation Operations Systems and Support*





# New Jersey Department of Transportation Organization Chart

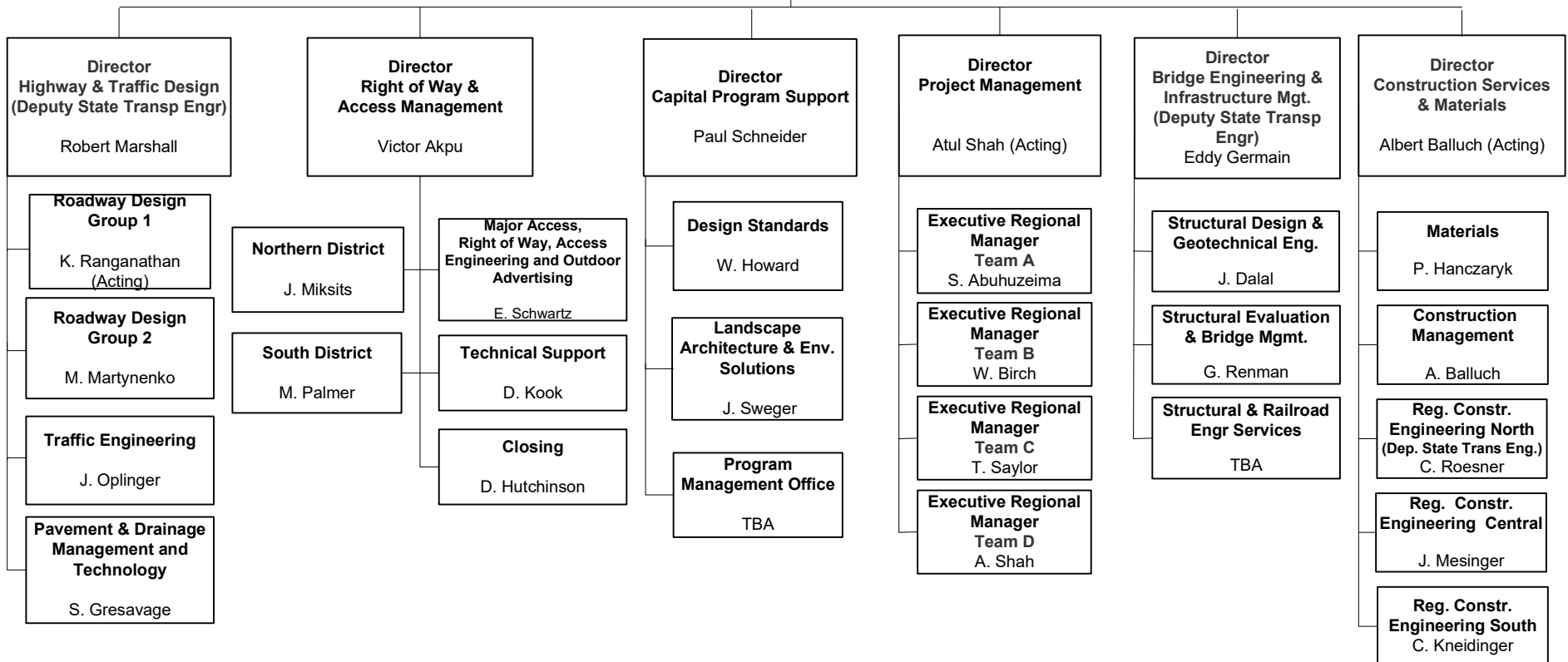


## Capital Program Management

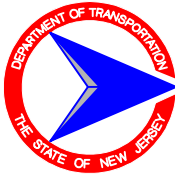
**Commissioner**  
Diane Gutierrez-Scaccetti

**Deputy Commissioner**  
Joseph D. Bertoni

**Assistant Commissioner  
Capital Program Management  
(State Transportation Engineer)**  
Snehal Patel



# New Jersey Department of Transportation Organization Chart



## Chief of Staff

**Commissioner**  
Diane Gutierrez-Scaccetti

**Chief of Staff**  
Jay Jimenez

