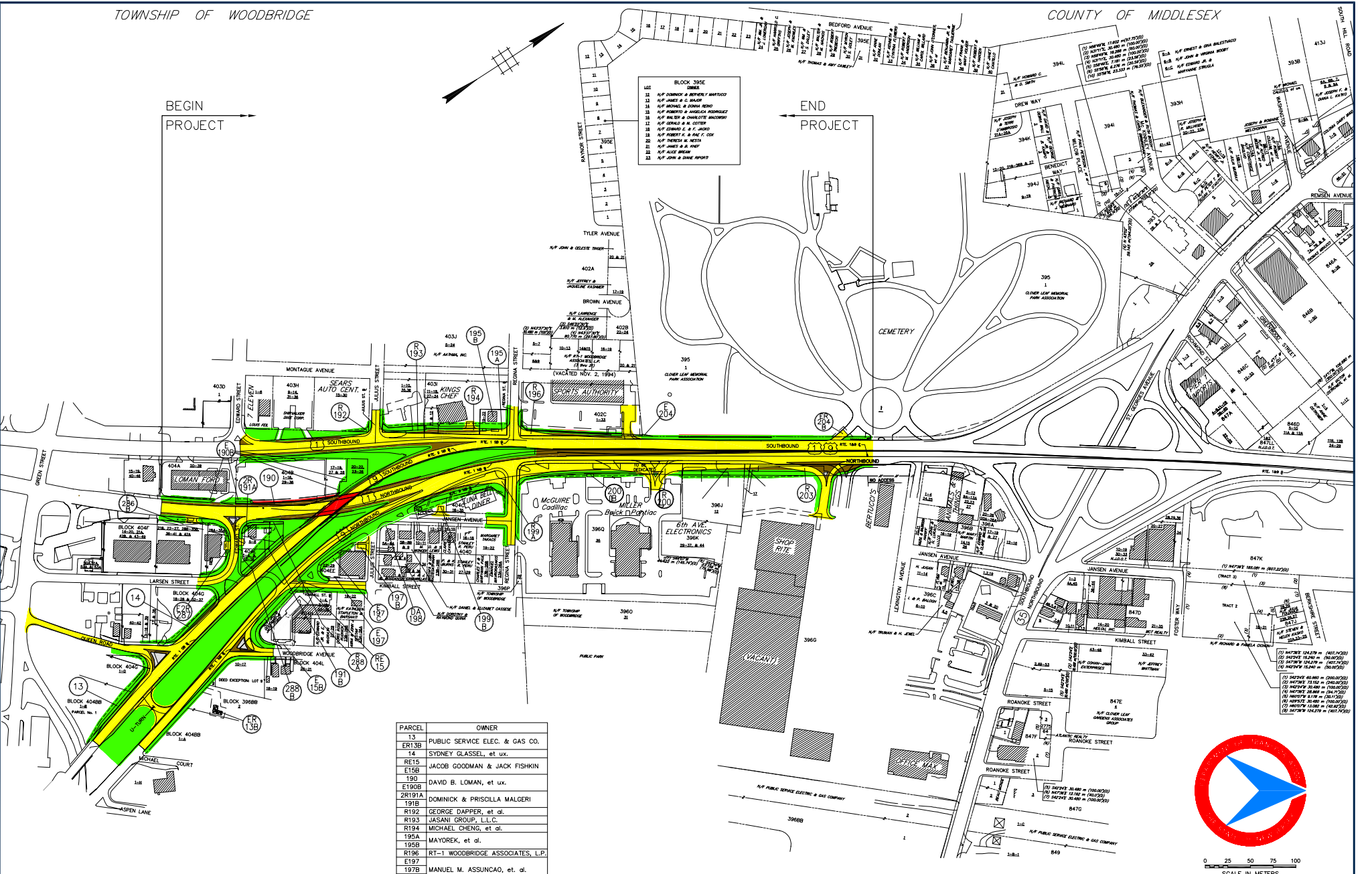


BEGIN PROJECT

END PROJECT



- LOT BLOCK 395E**
- 12 N/P DOMONICO & SENEVILLA MARIOTTI
 - 13 N/P JAMES & C. BALDI
 - 14 N/P DOMONICO & SENEVILLA MARIOTTI
 - 15 N/P DOMONICO & SENEVILLA MARIOTTI
 - 16 N/P DOMONICO & SENEVILLA MARIOTTI
 - 17 N/P DOMONICO & SENEVILLA MARIOTTI
 - 18 N/P DOMONICO & SENEVILLA MARIOTTI
 - 19 N/P DOMONICO & SENEVILLA MARIOTTI
 - 20 N/P DOMONICO & SENEVILLA MARIOTTI
 - 21 N/P DOMONICO & SENEVILLA MARIOTTI
 - 22 N/P DOMONICO & SENEVILLA MARIOTTI
 - 23 N/P DOMONICO & SENEVILLA MARIOTTI
 - 24 N/P DOMONICO & SENEVILLA MARIOTTI
 - 25 N/P DOMONICO & SENEVILLA MARIOTTI
 - 26 N/P DOMONICO & SENEVILLA MARIOTTI
 - 27 N/P DOMONICO & SENEVILLA MARIOTTI
 - 28 N/P DOMONICO & SENEVILLA MARIOTTI
 - 29 N/P DOMONICO & SENEVILLA MARIOTTI
 - 30 N/P DOMONICO & SENEVILLA MARIOTTI

PARCEL	OWNER
13	PUBLIC SERVICE ELEC. & GAS CO.
ER13B	PUBLIC SERVICE ELEC. & GAS CO.
14	SYDNEY GLASSL, et ux.
RE15	JACOB GOODMAN & JACK FISKIN
E15B	JACOB GOODMAN & JACK FISKIN
190	DAVID B. LOMAN, et ux.
E190B	DAVID B. LOMAN, et ux.
ZR191A	DOMINICK & PRISCILLA MALGERI
191B	DOMINICK & PRISCILLA MALGERI
R192	GEORGE DAPPER, et al.
R193	JASANI GROUP, L.L.C.
R194	MICHAEL CHENG, et al.
195A	MAYOREK, et al.
195B	MAYOREK, et al.
R196	RT-1 WOODBRIDGE ASSOCIATES, L.P.
E197	RT-1 WOODBRIDGE ASSOCIATES, L.P.
197B	MANUEL M. ASSUNCAO, et. al.
E197C	MANUEL M. ASSUNCAO, et. al.
DA198	MILDRED FRANCHAK
R199A	MYRA J. LEWIS
199B	MYRA J. LEWIS
R200	ARGONAUT HOLDINGS, INC.
R200B	ARGONAUT HOLDINGS, INC.
201	TEMIZ L.L.C.
202	TEMIZ L.L.C.
R203	JANICE H. LEVIN
E204A	GLOVER LEAF MEMORIAL PARK ASSOCIATION
ER204B	GLOVER LEAF MEMORIAL PARK ASSOCIATION
E286B	THE COLONIAL LIFE INSURANCE COMPANY OF AMERICA
E287	TICES HAZLET CO.
R288A	RABBIT WHOLESALERS
288B	RABBIT WHOLESALERS

- LEGEND:**
- PROPOSED ROADWAY
 - PROPOSED SHOULDER
 - PROPOSED BRIDGES/RETAINING WALLS
 - PROPOSED LANDSCAPING/BORDER AREA



0 25 50 75 100
SCALE IN METERS
1:1 500

NEW JERSEY DEPARTMENT OF TRANSPORTATION
 ROUTES U.S. 1 (1953), U.S. 9 (1953),
 AND U.S. 1&9 (1953)
 CONTRACT No. 035950170
 FREDERIC R. HARRIS, INC.
 CONSULTING ENGINEERS
 ISELIN, N.J.