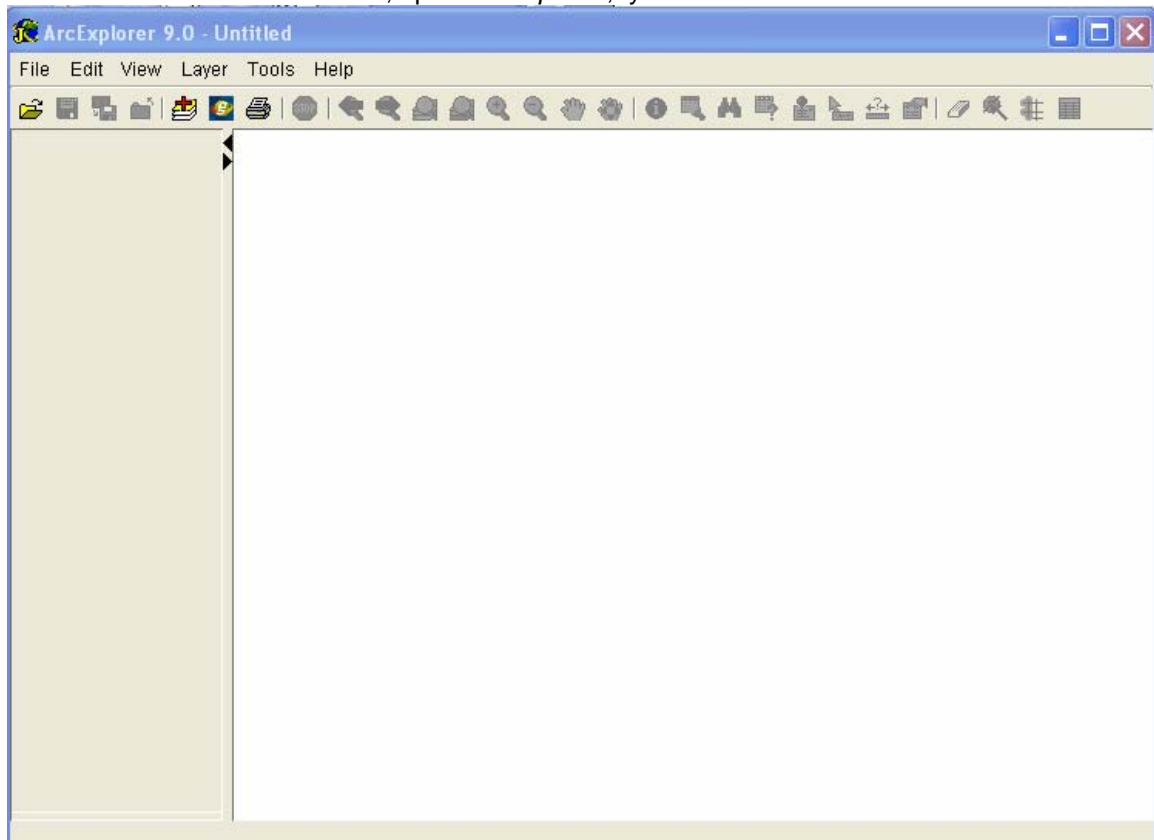


Procedure for installing *ArcExplorer* and viewing New Jersey 2002 aerial photos

Note: *ArcExplorer* is free software available for download via the ESRI website. To view the New Jersey 2002 aerial photography, you must first load *ArcExplorer*. Steps 1-4 are current as of April 2005. NJDOT has no control over the content or layout of the ESRI website and so these steps may change or appear “different” from what is described in these steps.

1. Using Internet Explorer, go to the ESRI *ArcExplorer* website at: <http://www.esri.com/software/arcexplorer/index.html>
2. Select Download *ArcExplorer*
3. At the next page select the version of *ArcExplorer* your computer supports. If your running Windows and want the current version, go to the **ArcExplorer 9—Java Edition** heading and select Download with Instructions
4. To complete the installation, follow the instructions under **Downloading ArcExplorer 9 for Windows**
5. Once the software is loaded, open *ArcExplorer*, you will see a window similar to this:

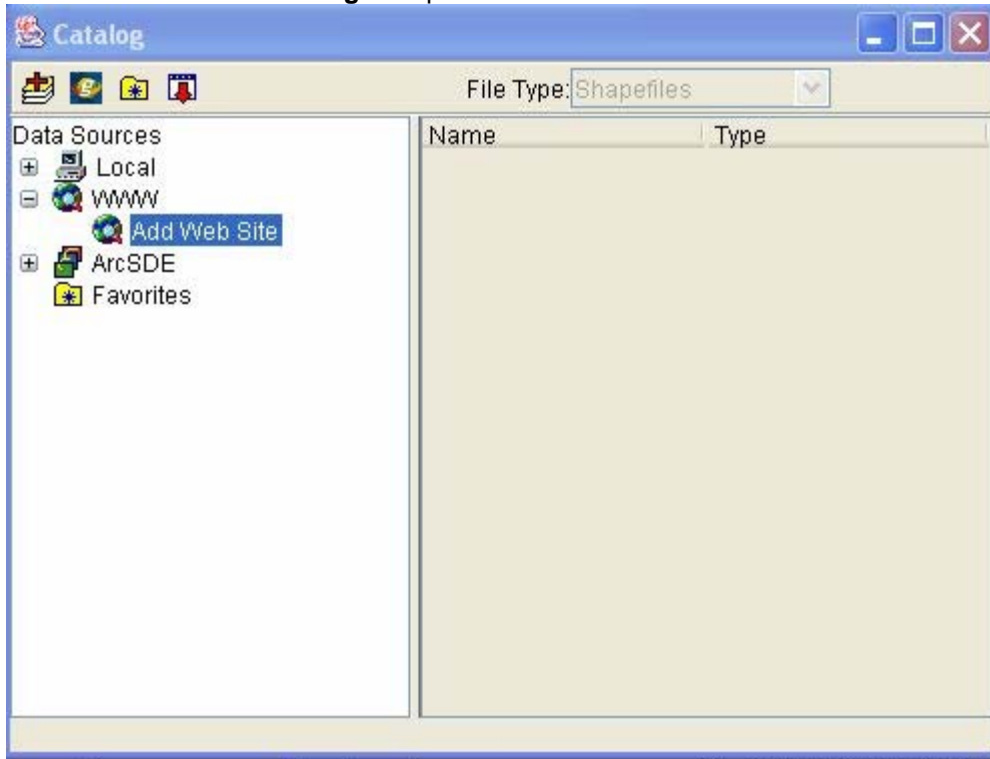


6. Click the **Add Layers** button 

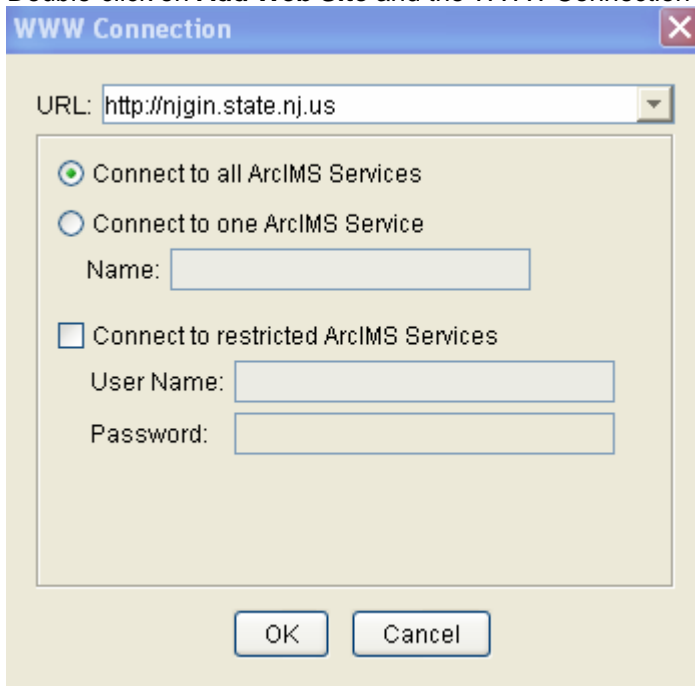


Procedure for installing *ArcExplorer* and viewing New Jersey 2002 aerial photos

7. A new window called **Catalog** will open:



8. Double-click on **Add Web Site** and the WWW Connection windows opens:

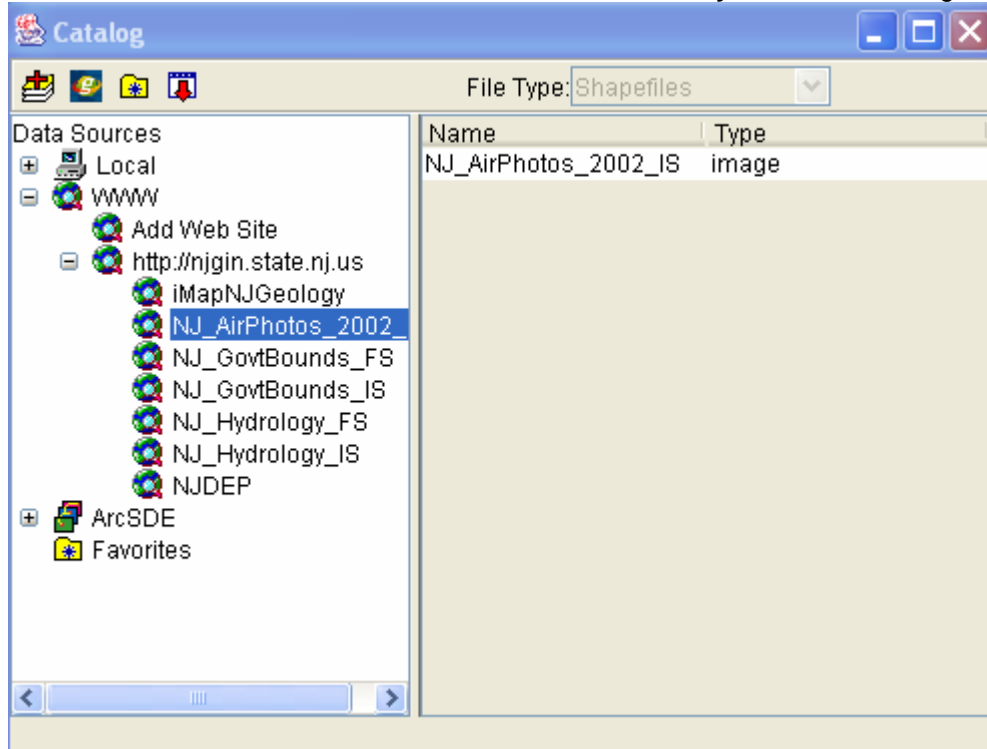


9. In the URL area type in <http://njgin.state.nj.us> and click OK



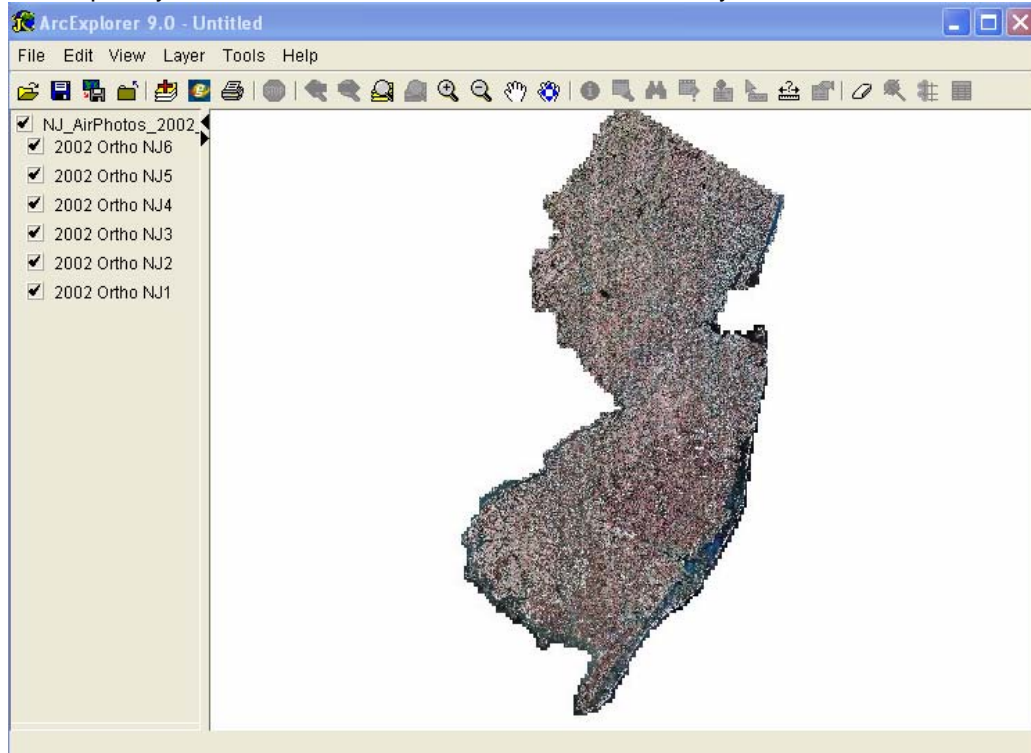
Procedure for installing *ArcExplorer* and viewing New Jersey 2002 aerial photos


10. The services available at NJGIN will become available to you. For the aerials, highlight the service titled NJ_AirPhotos_2002_IS and hit the **Add Layers** button once again:



Procedure for installing *ArcExplorer* and viewing New Jersey 2002 aerial photos

11. At this point you will see an outline of the state of New Jersey with the aerials:



12. To zoom into an area highlight the **Zoom In** button: 

13. As you zoom in, highways and municipal boundaries and labels will draw (if you add these layers in addition to the photography). The aerial photos will sharpen-up after a few moments with each successive zoom-in.

14. Click on the Help file for an overview on using *ArcExplorer*.

