



PRICE LIST - January 1, 2012 New Jersey State Contract Submission

Effective 1-Jan-12

Item	Description	UM	\$ USD MSRP
CALIBER Robots			
CAL-MK3	MK3 CALIBER ROBOT with Analog Video	Ea.	\$ 70,825.00
CAL-T5	CALIBER T5 with Analog Video	Ea.	\$ 74,300.00
CAL-MINRC	MiniCALIBER with Claw Arm and Flippers	Ea.	\$ 34,795.00
Robot Accessories			
CAL-2WA	2-way audio system (talk/listen)	Ea.	\$ 3,345.00
CAL-HWT	HARD WIRE TETHER (500') ON REEL WITH BRAKE	Ea.	\$ 3,255.00
CAL-PTZ	PTZ, color camera, panning 360°, 26 X optical zoom	Ea.	\$ 5,760.00
CAL-RC0	Robotic Claw on telescoping arm	Ea.	\$ 13,300.00
CAL-TD0	Twin-Distrupter Turret on telescoping arm	Ea.	\$ 13,810.00
CAL-TR0	Track System with Anti-flip bar	Ea.	\$ 4,230.00
CAL-CCU15	MK3/T5 CCU Upgrade	Ea.	\$ 16,500.00
CAL-DVR	Digital Video Recorder	Ea.	\$ 1,950.00
CAL-FR0	Fiber Optic Spooler	Ea.	\$ 8,750.00
CAL-MAFB	Motorized Anti-Flip Bar	Ea.	\$ 2,500.00
CAL-MPTZ	Motorized PTZ Mast	Ea.	\$ 3,500.00
CAL-PIP	Picture-in-Picture functionality	Ea.	\$ 3,500.00
03A1011	Main Switch Lock for CALIBER Robot	Ea.	\$ 75.00
CAL-AL0	Aluminium Folding Ramps (SET OF 2)	Ea.	\$ 475.00
CAL-APC	Auxillary Pole Camera MK3 or T5	Ea.	\$ 910.00
CAL-BC0	Extra CALIBER 24V Battery Charger	Ea.	\$ 325.00
CAL-CA0	CALIBER Claw Attachment Kit	Ea.	\$ 2,775.00
CAL-CCB	CCU Battery Charger	Ea.	\$ 140.00
CAL-DPM	MOUNT FOR DUKE PRO INITIATOR	Ea.	\$ 370.00
CAL-DVS	Digital COFDM Video Upgrade	Ea.	\$ 27,175.00
CAL-EB0	EXTRA ROBOT BATTERY PACK 24VDC (RECHARGEABLE)	Ea.	\$ 1,060.00
CAL-EXA	T5 - Arm Extension Kit	Ea.	\$ 4,730.00
CAL-EXWAR	CALIBER Robot Extended Warranty (3rd Year)	Ea.	\$ 3,680.00
CAL-HCU	HANDHELD CONTROLLER UNIT	Ea.	\$ 1,570.00
CAL-PSA	Portable Screen for ANALOG System	Ea.	\$ 3,450.00
CAL-PSD	Portable Screen for DIGITAL System	Ea.	\$ 4,950.00
CAL-TJK	Tele-Jack Robot Accessory	Ea.	\$ 8,930.00
CAL-TK0	External truck brackets for RF system (Client installs)	Ea.	\$ 730.00
CAL-TRC	Heavy Duty Hard Shell Transit Case (set of 2)	set	\$ 3,945.00
CAL-TTC	CALIBER ROBOT ONSITE TRAINING	Ea.	\$ 1,375.00
CAL-VEX	VIDEO RF RANGE EXTENDER FOR CALIBER ROBOT	Ea.	\$ 2,055.00
CAL-XR1	VIDISCO XRAY MOUNT FOR XR-200 OR XR-300	Ea.	\$ 925.00
CAL-K100	PAN DISRUPTER UNIT (12 GA)	Ea.	\$ 2,710.00
CAL-K1000	PAN RECOIL REDUCTION KIT	Ea.	\$ 2,305.00
K7000	.357 Magnum Micro Disrupter * (K7000)	Ea.	\$ 2,745.00
CAL-SP0	CALIBER Basic Spare Parts Kit (MK3)	Ea.	\$ 2,120.00
CAL-SP1	CALIBER Basic Spare Parts Kit (T5)	Ea.	\$ 2,120.00
CAL-NRM	Interchangeable Weapons Turret to hold RAM & 20mm Neutrex (includes R	Ea.	\$ 5,520.00
ESI/RM2	DUKE PRO - TWO CHANNEL INITIATOR WITH MOUNT	Ea.	\$ 1,475.00
CAL-BSG	BENELLI M4 SUPER SHOTGUN MOUNT (SHOTGUN NOT INCLUDED)	Ea.	\$ 2,305.00
CAL-TPTZ	MiniCALIBER - Telescoping PTZ (option not available if Mini-CALIBER has manipulator arm	Ea.	\$ 12,000.00
CAL-FRC	1x Firing Circuit for Mini-CALIBER	Ea.	\$ 1,000.00
Stealth Search Products			
M1000	UNDER VEHICLE SEARCH MIRROR	Ea.	\$ 575.00
M2000	5-SECTION SEARCH MIRROR	Ea.	\$ 430.00
M3000	3 SECTION SEARCH MIRROR	Ea.	\$ 168.00
PSM-H&L	POCKET SEARCH MIRROR	Ea.	\$ 190.00
03A1035	Stealth Search Pole Cam	Ea.	\$ 3,050.00
Hook & Line Rigging Kits			
ESHL01	ESSENTIAL HOOK & LINE KIT	Ea.	\$ 3,805.00
ESHL03	ESSENTIAL HOOK & LINE KIT WITH BACKPACK	Ea.	\$ 3,805.00
ULHL02	ULTIMATE HOOK AND LINE KIT	Ea.	\$ 5,995.00
EOD Accessories			
FR50	50 METER FIRING LINE AND REEL (7.5 "DIA) ASSY PAR100000	Ea.	\$ 345.00
FR100	100 METER FIRING LINE AND REEL (11.5" DIA) ASSY	Ea.	\$ 420.00
FR300	300 METER FIRING LINE AND REEL	Ea.	\$ 740.00
CCR-150	500 FOOT- 5 COAX CABLE COM. REEL ASSY	Ea.	\$ 4,045.00
TSK	Search Tool Kit	Ea.	\$ 1,915.00
Crimper	EOD CRIMPER / CUTTER ASSY REV 3	Ea.	\$ 105.00

MK3 - CALIBER® MEDIUM EOD ROBOT

Articulating Dual Weapons Turret



Claw Attachment Kit



Lifts up to 65 lbs (30kg)



X-ray Mount



Arms fold back for easy storage



Extended Disrupter Reach



Portable Command Control Unit (CCU)



Climbs Stairs



Drags / tows bodies

MULTI-USE

The MK3 - CALIBER® EOD robot satisfies a growing need for a medium-size platform that offers the towing and dragging capability of a larger robot, but with the speed, agility and dexterity of smaller lightweight platforms.

COST EFFICIENT / MODULAR

Equipped with a heavy duty claw and rotating Twin-Disrupter Turret the MK3 - CALIBER® offers mission critical dependent features at low cost. Based on recommendations from bomb technicians, the robot is completely modular, allowing for easy platform upgrades, field repair and part replacement and reduces annual maintenance costs.

MULTIPLE WEAPONS

The unique 355° rotating, 180° tilting Twin-Disrupter Turret provides unparalleled aiming capability of 2 recoilless disrupters. Integrated Cross hairs on the CCU screen with 4 green lasers and 2 color cameras are used for sighting weapons. 4 independent firing circuits are used for initiating disrupters, bottle charges or x-ray systems. An optional mount for a Benelli M4 shotgun is also available.

MANEUVRABLE

A 3-speed transmission accelerates the robot up to 5 mph (8 km/h) while providing the low end torque to climb steep stairs and drag bodies. The 6 x 6 all wheel chain drive, fitted with the rubber tracks can maneuver over all types of rugged terrain including snow and sand.

COMMAND & CONTROL UNIT (CCU)

The weather resistant CCU provides precise, simultaneous operation using the variable speed drive joystick and dedicated Pan-Tilt-Zoom (PTZ) Camera joystick. An intuitive 3D layout of the robot on the deck of the CCU includes backlit buttons and user feedback ensuring ease of use during operations. The low reflection 15" (38.1cm) LCD color screen shows clear images in both bright and low light conditions from any of the 6 color cameras. To minimize unsafe actions,

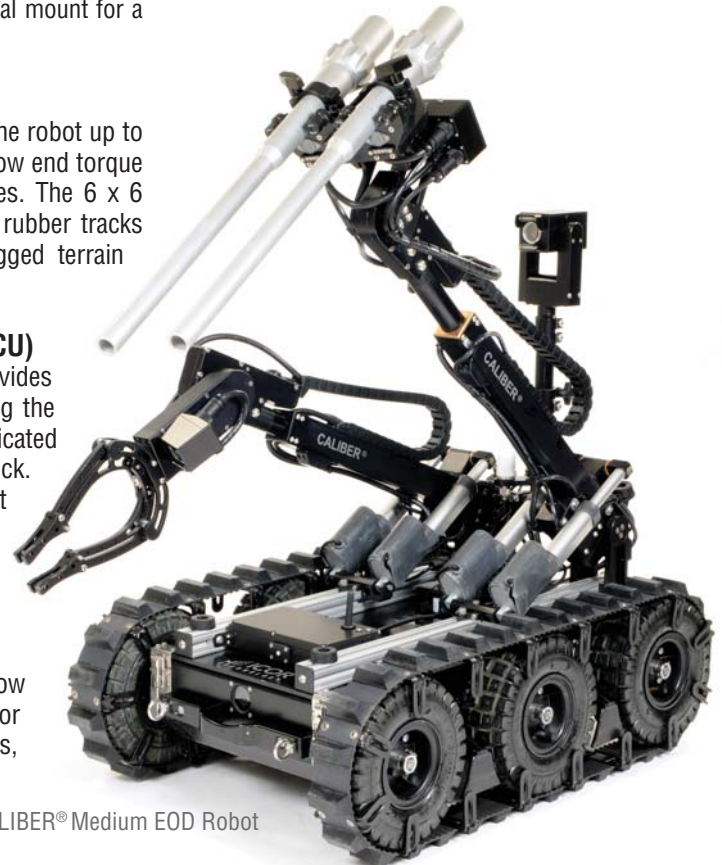
the CCU requires a two-step function for firing disrupters or weapons by featuring a removable key switch and dual push-button operation. Video jacks allow for camera output to an auxiliary monitor. Audio jacks allow for output to powered speakers or input of a MP3 player. Optional features include Picture-in-Picture (PIP) (COFDM only) and Digital Video Recorder for recording MPEG and JPEG and audio. Please see the CCU datasheet for more details on CCU Features.

MISSION TIME

24 VDC quick-change rechargeable batteries extend your mission time to 3 – 5 hours (mission dependant). Feedback screen on CCU indicates battery status of robot and CCU. It literally takes seconds to swap batteries or you can charge the battery without removing it from the chassis.

DEPLOYED WORLDWIDE

Law enforcement agencies throughout the USA, Canada, Europe, Middle East and Asia currently deploy the MK3 - CALIBER® EOD/SWAT Robot.



MK3 - CALIBER® Medium EOD Robot

Standard Features & Capacities

FEATURE	DESCRIPTION
Drive System	<ul style="list-style-type: none"> • 6x6 All wheel chain drive with 3-speed transmission • Pneumatic tires with quick release coupler (tire size: 10.0"/25.0 cm). • Low Gear: Stair Climbing > 1 mph (1.6 km/h) • Med. Gear: 0-2 mph (0-3.2 km/h) • High Gear: 0-5mph (0-8 km/h)
CCU	<ul style="list-style-type: none"> • Command and Control Unit to operate robot • Multi-function control, with simultaneous use of variable speed joysticks • Dedicated joystick for PTZ camera • 15" (38.1cm) bright daylight readable LCD Screen • Battery status indicator • Video jacks output to auxiliary monitor • Audio output and MP3 audio inputs • Weather resistant
RF System	Wireless system (900 MHz data, 2.4 GHz video)
Robot Battery Pack	2 x 13A/h, 24 VDC, quick-change, rechargeable, lead-acid battery
Battery Chargers	<ul style="list-style-type: none"> • 1 x Robot: 24 VDC/110 or 220 VAC • 1 x CCU: 12 VDC/110 or 220 VAC
Track System	Rubber Track System fits over the pneumatic tires; includes anti-flip bar
Robotic Claw on Telescoping Arm	<ul style="list-style-type: none"> • 3 axis, 360° rotating claw • 1 x color camera • 1 x LED light • 10" (25cm) claw opening • 71.5" (181 cm) Vertical Reach; 30" (76 cm) Horizontal Reach from Chassis • 1 x Firing Circuit • Shoulder Range: 0-100° • Lift capacity: 65lbs (29.5kg)
Twin-Disrupter Turret on Telescoping Arm	<ul style="list-style-type: none"> • 2 x mounting brackets for recoilless disrupters <i>(*Note: use only recoilless disrupters)</i> • 2 x Color Weapon Cameras CCD • 4 x Aiming Green Lasers • 2 x Firing Circuits • 2 x LED Lights • Turret Rotate: 0-355° • Turret Tilt: 0-180° • Motorized Arm Extension: 16" (41cm) travel • Shoulder Range: 0-100°
PTZ Camera	<ul style="list-style-type: none"> • Pan- Tilt-Zoom (PTZ) color camera • 26 X optical zoom • 2 x LED light • 360° continuous rotation • Folds down for transportation • Telescopic height adjustment
Front Drive Camera	Infrared Color CCD
Back Drive Camera	Infrared Color CCD, adjustable
LED Lights	4 sets of LED lights (chassis, arms and PTZ camera)
Hardwire Tether	Standard 500 ft. (153m) tether reel with Slip Ring; used as an alternative to RF control
Digital 2 - Way Audio	Two-way communication (talk/listen) with transmitter, receivers and PTT headset; audio in/out ports to connect to MP3 player or external speakers
Robot Deck	Backlit on/off switch; 1 x Firing Circuit
Training Course	One day Robot Operation and Maintenance course. Either at ICOR or customers facility
WARRANTY	2-YEAR LIMITED WARRANTY
TECHNICAL SUPPORT	UNLIMITED TECHNICAL SUPPORT

Optional Features

FEATURE	DESCRIPTION
Digital COFDM Video System	Upgrade to a true COFDM digital system. Operating in 1.14 GHz and 1.4 GHz ensures transmission of video images free of distortion up to 1 Km non-line of sight. Ideal for mobile and urban environments. Optional Picture-in-Picture (PIP) allows for simultaneous viewing of any two cameras.
Digital Video Recorder	Hardwired into CCU case. Records up to 120GB of video and audio on an HDD & SD Card memory storage with USB 2.0 PC interface – MPEG-4, JPEG capable. Integrated 3.5" (8.8cm) color LCD screen
Claw Attachment Kit	Set of 10 tools for CALIBER® claw includes: window breaker, tire deflator, finger extension, cutting hook, utility knife, multiple effectors and hook & line accessories
Spare Parts Kit	Set of basic spare parts for CALIBER®
X-ray Mount	X-ray mounting bracket for Vidisco XR-200 OR XR-300. (Please call for other systems)
Truck Mount	External truck brackets for RF system
Handheld Controller Unit	Lightweight HCU connected via tether input providing full motor control of robotic arms, drive system and LED lights
Handheld Screen	Secondary portable wireless RF LCD Screen. Ideal for SWAT entry teams.
Shock Tube Initiator	2 Channel Shock Tube Initiator with attachment mounts
Ramps	Set of lightweight, folding aluminum ramps for truck deployment
Camera Extension Pole	Extendable Camera Pole mounts into weapons arm to add up to 74" (188 cm) of vertical surveillance
RF Extender	Increases Video and Data RF distance
Heavy Duty Transit Case	Ideal for repeated shipping of robot.
Extra Battery Charger	Additional battery charger for either the robot battery or CCU battery
Motorized PTZ	Control for motorized, telescoping mast for Pan-Tilt-Zoom (PTZ) Camera max reach of 55" (140 cm)
Motorized Anti-flip	Control for motorized anti-flip bar to shorten robot chassis in confined spaces
Fiber Optic Reel	1000' (305m) milspec fiber-optic tether reel with auto-spooler for use as a backup to RF control of the CALIBER® robot

General Capacities

Mission Time	3 – 5 hours +, mission dependent
Width	23.75" (60.3 cm)
Height (Stowed Position)	22" (56 cm)
Length	33" (84 cm)
Ground Clearance	2.25" (5.7 cm) - allows for driving in snow and sand
Weight	185 lbs (84 kg)
Drag Capacity	250 lbs (113 kg)
Stair Climbing Angle	40° - 45° depending on stair structure
Weather Resistance	Environmentally sealed; chem.-bio wash down capability



Printed in Canada V2011.08.24

CALIBER® T5

SMALL EOD / SWAT ROBOT



Sharing the same core design principles as the MK3 CALIBER® robot, the CALIBER® T5 packs mission critical features into a smaller, lighter, narrower robot chassis. What makes the CALIBER® T5 different is a single highly agile robotic arm with 5 degrees of movement including a turret, shoulder, elbow, wrist and claw joint.

MOBILITY

Measuring only 17.25" (44 cm) wide, the CALIBER® T5 is best suited to EOD and SWAT teams needing to deploy a compact robot into narrow passages such as buses, trains and planes. Weighing in at only 140 lbs (64 kgs), the robot can be quickly deployed from a trunk of a car. With a vertical reach of 66" the CALIBER® T5 can reach most suspicious devices. The optional Arm Extension Kit extends the reach of the arm to 105" (267 cm); allowing for easy access to overhead airplane or bus compartments.

WEAPONS SYSTEM

The T5 comes equipped with a single Disrupter Mount and is interoperable with most popular brands of recoilless disrupters. An optional mount for a Benelli M4 shotgun is also available. Integrated Cross hairs on the CCU screen with 2 green lasers and 1 color camera are used for sighting weapons. 4 independent firing circuits are used for initiating disrupters, bottle charges or x-ray systems.

DRIVE SYSTEM

Powerful drive motors control the chain driven rubber tracks, while a 3 speed transmission accelerates the robot up to 5 mph (8 km/h) while providing the low end torque to climb steep stairs and easily navigate all types of rugged terrain including snow and sand.

COMMAND & CONTROL UNIT (CCU)

The weather resistant CCU provides precise, simultaneous operation using the variable speed drive joystick and dedicated Pan-Tilt-Zoom (PTZ) Camera joystick. An intuitive 3D layout of the robot on the deck of the CCU includes backlit buttons and user feedback ensuring ease of use during operations. The low reflection 15" (38.1cm) LCD color screen shows clear images in both bright and low light conditions from any of the 5 color cameras. To minimize unsafe actions, the CCU requires a two-step function for firing disrupters or weapons by featuring a removable key switch and dual push-button operation. Video jacks allow for camera output to an auxiliary monitor. Audio jacks allow for output to powered speakers. Optional features include Picture-in-Picture (PIP) (COFDM only) and Digital Video Recorder for recording MPEG and JPEG and audio. Please see the CCU datasheet for more details on CCU features.

MISSION TIME

24 VDC quick-change rechargeable batteries extend your mission time to 2 – 4 hours (mission dependant). Feedback screen on CCU indicates battery status of robot and CCU. It literally takes seconds to swap batteries or you can charge the batteries directly inside the robot chassis without removing them. 2 robot battery packs are provided as a part of the standard package.



CALIBER® T5 Small EOD / SWAT Robot

Standard Features & Capacities

FEATURE	DESCRIPTION
Drive System	<ul style="list-style-type: none"> • Chain driven with 3-speed transmission • Rubber tracks with anti-flip bar for climbing stairs. • Low Gear: Stair Climbing > 1 mph (1.6 km/h) • Med. Gear: 0-2 mph (0-3.2 km/h) • High Gear: 0-5mph (0-8 km/h)
Turning circle	0 degrees
Robot Battery Pack	2 x 8Ah 24V DC lead acid rechargeable, quick change
Battery Chargers	1 x Robot: 24 VDC/110 or 220 VAC 1 x CCU: 12 VDC/110 or 220 VAC
CCU	<ul style="list-style-type: none"> • Command and Control Unit to operate robot • Multi-function control, with simultaneous use of variable speed joysticks • Dedicated joystick for PTZ camera • 15" (38.1cm) bright daylight readable LCD Screen • Battery status indicator • Video jacks output to auxiliary monitor • Audio output and MP3 audio inputs • Weather resistant
RF System	Wireless system (900 MHz data, 2.4 GHz video)
Turret and Arm rotation	+/- 120 degrees
Shoulder rotation	0 - 180 degrees
Elbow rotation	0 - 270 degrees
Claw rotation	360 degrees continuous rotation. 25 cm (10") opening, rubber lined effectors
Lift capacity	8kg (18 lbs) - <i>Arm Extended</i> 20kg (45 lbs) - <i>Arm Retracted</i>
Vertical reach	66" (168 cm)
Horizontal reach	47" (119 cm)
Front Drive Camera	Infra Red Color Camera CCD
Rear Drive Camera	Infra Red Color Camera CCD
PTZ Camera	<ul style="list-style-type: none"> • Pan- Tilt-Zoom color camera • 26 X optical zoom • 2 x LED light • 360° continuous rotation • Folds down for transportation • Telescopic height adjustment
Claw Camera	Color Camera CCD with LED Light
Weapons Camera	Color Camera CCD with Lasers for aiming Recoilless Disrupters
Turret Lights	2 LED lights mounted on Turret
Firing system	4 independent isolated circuits
Disrupter Mount	Single Mounting bracket for one Recoilless Disrupter – 20mm Proparms, RE70M3, PAN with recoil adapter <i>(*Note: use recoilless disrupters only)</i>
Hardwire Tether	Standard 500 ft. (153m) tether reel with Slip Ring; used as an alternative to RF controls
2 - Way Audio	Two-way communication (talk/listen) with transmitter, receivers and PTT headset; audio in/out ports to connect to MP3 player or external speakers
Training Course	One day Robot Operation and Maintenance course. Either at ICOR or customers facility
WARRANTY	2-YEAR LIMITED WARRANTY
TECHNICAL SUPPORT	UNLIMITED TECHNICAL SUPPORT

Printed in Canada V2011.08.24

Optional Features

FEATURE	DESCRIPTION
Digital COFDM Video System	Upgrade to a true COFDM digital system. Operating in 1.14 GHz and 1.4 GHz ensures transmission of video images free of distortion up to 1 Km non-line of sight. Ideal for mobile and urban environments. Optional Picture-in-Picture (PIP) allows for simultaneous viewing of any two cameras.
Digital Video Recorder	Hardwired into CCU case. Records up to 120GB of video and audio on an HDD & SD Card memory storage with USB 2.0 PC interface – MPEG-4, JPEG capable. Integrated 3.5" (8.8cm) color LCD screen
Claw Attachment Kit	Set of 10 tools for CALIBER® claw includes: window breaker, tire deflator, finger extension, cutting hook, utility knife, multiple effectors and hook & line accessories
Arm Extension Kit	Quick connect telescoping Arm Extension fits onto the existing arm, extends reach up to 105" (267 cm)
Spare Parts Kit	Set of basic spare parts for CALIBER®
X-ray Mount	X-ray mounting bracket for Vidisco XR-200 OR XR-300 (please call for other systems)
Truck Mount	External truck brackets for mounting RF antennas outside command vehicle.
Handheld Controller Unit	Lightweight HCU connected via tether input providing full motor control of robotic arm, drive system and LED lights
Handheld Screen	Secondary portable wireless RF LCD Screen. Ideal for SWAT entry teams.
Shock Tube Initiator	2-Channel Shock Tube Initiator with attachment mounts
Ramps	Set of lightweight, folding aluminum ramps for truck deployment
Camera Extension Pole	Extendable Camera Pole mounts into weapons arm to add up to 74" (188 cm) of vertical surveillance
RF Extender	Increases Video and Data RF distance
Extra Battery Charger	Additional battery charger for either the robot battery or CCU battery
Heavy Duty Transit Case	Ideal for repeated shipping of robot.
Motorized PTZ	Control for motorized, telescoping mast for Pan-Tilt-Zoom (PTZ) Camera max reach of 55" (140 cm)
Motorized Anti-flip	Control for motorized anti-flip bar to shorten robot chassis in confined spaces
Fiber Optic Reel	1000' (305m) milspec fiber-optic tether reel with auto-spooler for use as a backup to RF control of the CALIBER® robot

General Capacities

Mission Time	2 - 4 hours +, mission dependent
Width	17.25" (44 cm)
Height (Stowed Position)	22" (56 cm)
Length	34.5" (87 cm)
Ground clearance	2.75" (7 cm) - allows for driving in snow and sand
Weight	140 lbs (64 kg)
Drag Capacity	200 lbs (91 kg)
Stair Climbing	Climbs 8" (20 cm) stairs at 45 degrees with suitable traction
Weather resistance	Environmentally sealed; chem.-bio wash down capability

CALIBER® ROBOT

OPTIONAL FEATURES

Claw Attachment Kit (CAL-CA0)

Increase the capabilities of your CALIBER® and keep responders out of harm's way with the addition of claw accessories such as a window breaker, box cutter, and tire deflator. Specially designed fingertips make opening doors, gripping bags, and reaching into narrow spaces an easy task and use the hook and line attachments for remote retrieval of suspicious devices. *(Available for MK3 and T5)*



Picture-In-Picture (CAL-PIP)

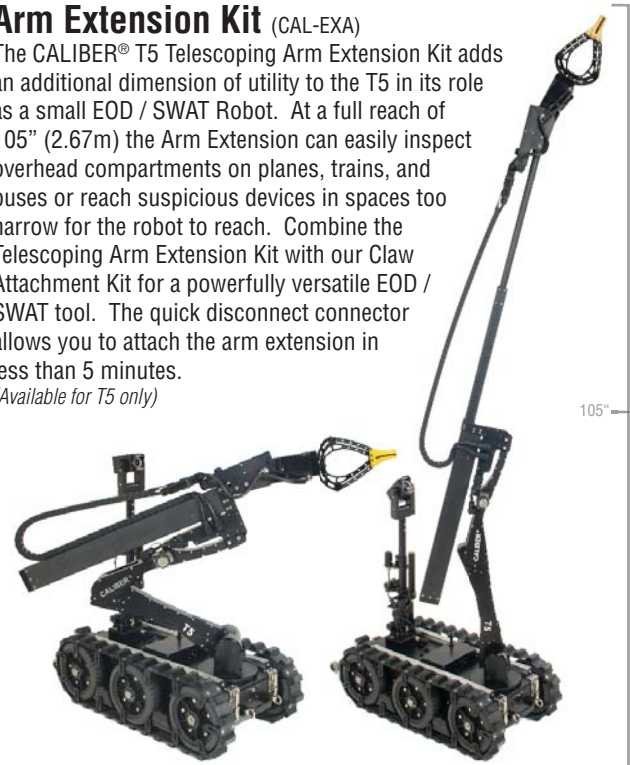
Enhance situational awareness by adding Picture-In-Picture functionality to your CALIBER® Robot. Simultaneously view any two of the CALIBER® Robot's onboard cameras including the Pan-Tilt-Zoom (PTZ) Camera, Front and Rear IR Drive Cameras, Claw Camera or Weapon Camera.

Combined with the dedicated PTZ control stick, allowing for concurrent operation of the robot and PTZ Camera, the Picture-In-Picture capabilities of the CALIBER® Robot lets you stay on task while remaining aware of your surroundings. *(Available for MK3 and T5)*



Arm Extension Kit (CAL-EXA)

The CALIBER® T5 Telescoping Arm Extension Kit adds an additional dimension of utility to the T5 in its role as a small EOD / SWAT Robot. At a full reach of 105" (2.67m) the Arm Extension can easily inspect overhead compartments on planes, trains, and buses or reach suspicious devices in spaces too narrow for the robot to reach. Combine the Telescoping Arm Extension Kit with our Claw Attachment Kit for a powerfully versatile EOD / SWAT tool. The quick disconnect connector allows you to attach the arm extension in less than 5 minutes. *(Available for T5 only)*





Digital COFDM Video System (CAL-DVS)

Upgrade to a true COFDM Digital System. Operating in the 1.14GHz – 1.4GHz range ensures the transmission of video images free of distortion from up to 1km away (non-line of sight); ideal for searching buildings with a mass amount of concrete and steel in heavy urban environments and airports.

(Available for MK3 and T5)

External Truck Mount for RF System (CAL-TKO)

The external truck mounting bracket provides quick deployment of the data and video antennas to the outside of your command vehicle allowing for safe operation of the robot from inside your command vehicle while maximizing the RF operating range. The kit includes up to 15' (4.5m) of shielded cable and quick disconnect brackets for the Command and Control Unit (CCU) and antennas.

(Available for MK3 and T5)



RF Extender (CAL-VEX)

Increase the operating RF range of you CALIBER® robot with the RF Extender. Mounted on a portable tripod, data and video antennas can be directly connected to the CCU using the 500' Hardwire Tether (included in standard robot package) ensuring distortion free RF Transmissions. The RF Extender is for use with both the analog and Digital COFDM video and data system.

(Available for MK3 and T5)

Motorized Anti-Flip Bar (CAL-MAFB)

Remotely stow and deploy the motorized anti-flip bar up to shorten chassis, assists with climbing and descending stairs and turning in confined spaces

(Available for MK3 only)



Auxilliary Pole Camera (CAL-APC)

Extend your vertical viewing capability by attaching the IR enable auxiliary pole camera into the weapons mount of the CALIBER®. The three stage telescoping pole that extends to 74" (188cm). A lockable fly wheel allows operators to adjust the angle of the IR camera remotely

Motorized PTZ Mast (CAL-MPTZ)

Remotely increase the height of your Pan-Tilt- Zoom (PTZ) camera up to 55" (140 cm), with the motorized, three stage telescoping PTZ mast.

(Available for MK3 and T5)



Portable Handheld Screen (CAL-PSA/D)

The CALIBER®'s Portable Handheld Screen is ideal for SWAT entry teams that want to see what the robot operator is viewing on the CCU screen. Available for analog or Digital COFDM RF System

Digital Video Recorder (CAL-DVR)

Digital Video Recorder (DVR) hardwired into CCU case. Allows operator to record video and audio. Up to 120GB HDD & SD Card memory storage with USB 2.0 PC interface – MPEG-4, JPEG capable. An integrated 3.5" (8.8cm) color LCD screen with time stamp format and frame counter allows for easy playback of video.

(Available for MK3 and T5)





Benelli® M4 Shotgun Mount (CAL-BSG)

Turn your CALIBER® robot into a breaching tool with the attachment of an M4 Shotgun. May also be used to fire less lethal rounds.

**Please note, shotgun is not included.
(Available for MK3 and T5)*



Ideal Products PAN Disrupter™ Unit (K100)

12 gauge, shock tube initiated disrupters. Recoil Reducer Kit is required to fire PAN disrupters from the CALIBER® Robot *(Available for MK3 and T5)*



Ideal Products Recoil Reducer Kit (K1000)

Recoil reducer is required to fire PAN disrupters from the CALIBER® Robot *(Available for MK3 and T5)*



Duke Pro 2 Channel Shock Tube Initiator (ESI/RM2)

Required for initiating the PAN disrupter or Bottle Charges. Includes attachment mounts for CALIBER® Robot *(Available for MK3 only)*



Neutrex Ram Mount (CAL-NRM)

Interchangeable Weapons Turret to hold RAM & one 20mm Neutrex (includes RAM, disrupter is not included) *(Available for MK3 and T5)*



Dual Neutrex Ram Mount (CAL-DRM)

Weapons turret head with integrated actuators to reduce recoil. Holds two standard 20mm Neutrex disrupters. Disrupters not included. *(Available for MK3 only)*



29mm Weapons Mount (CAL-PSA/D)

Weapons Mount with sighting camera for the Proparms 29mm disrupter *(Available for MK3 only)*



X-Ray Mount (CAL-XR1)

The X-Ray Mount keeps technicians clear of danger by using the CALIBER® robot to remotely deploy the XR-200 or XR-300 x-ray systems. ICOR can customize mounts for alternative x-ray systems.

(Available for MK3 and T5)



T5 Battery

MK3 Battery

Quick-change Battery Pack (CAL-EB0)

Lead-acid rechargeable battery pack for the CALIBER® MK3 or T5 Robot
 MK3 - 13 A/h 24 VDC; T5 - 8 A/h 24 VDC (Available for MK3 and T5)

24V Battery Charger (CAL-BC0)

CALIBER® Robot Battery charger will plug into the rear battery charger port of robot or directly into port on battery. 24 VDC/110 or 220 VAC
 (Available for MK3 and T5)



12V Battery Charger (CAL-CCB)

CALIBER® Command and Control Unit battery charger. 12 VDC/110 or 220 VAC
 (Available for MK3 and T5)

Fiber-Optic Reel (CAL-DVS)

1000' (305m) milspec fiber-optic tether reel with auto-spooler for use as a backup to RF control of the CALIBER® robot (Available for MK3 and T5)



Handheld Controller Unit (CAL-HCU)

The lightweight Handheld Controller Unit has a 9' cord that connects to the tether input of your robot, providing full motor control of the weapon arm, claw arm, drive system and LED lights. The controller uses the same variable speed joystick with "dead man" button as the standard CCU and is powered by a 9V battery.

(Available for MK3 and T5)

Aluminum Ramps (CAL-AL0)

Foldable, lightweight ramps for loading and unloading CALIBER® robot into response vehicles (Available for MK3 and T5)



Basic Spare Parts Kit (CAL-SP0/1)

Contains essential spare parts for the chassis, deck, tracks, wrist, arms, cameras, etc. that are needed for regular maintenance.

(Available for MK3 and T5)

Hardshell Transit Cases (CAL-TRC)

A set of 2 (two) Heavy Duty Hard Shell Transit Case can be used for repeated transport of the CALIBER® robot with accessories

(Available for MK3 and T5)



GSA Contract Holder
 # GS-07F-0430V

Printed in Canada V2011.08.24

HOOK & LINE RIGGING EQUIPMENT

ICOR Technology's Hook and Line kits are designed to stand up to the rigors of EOD rigging missions.

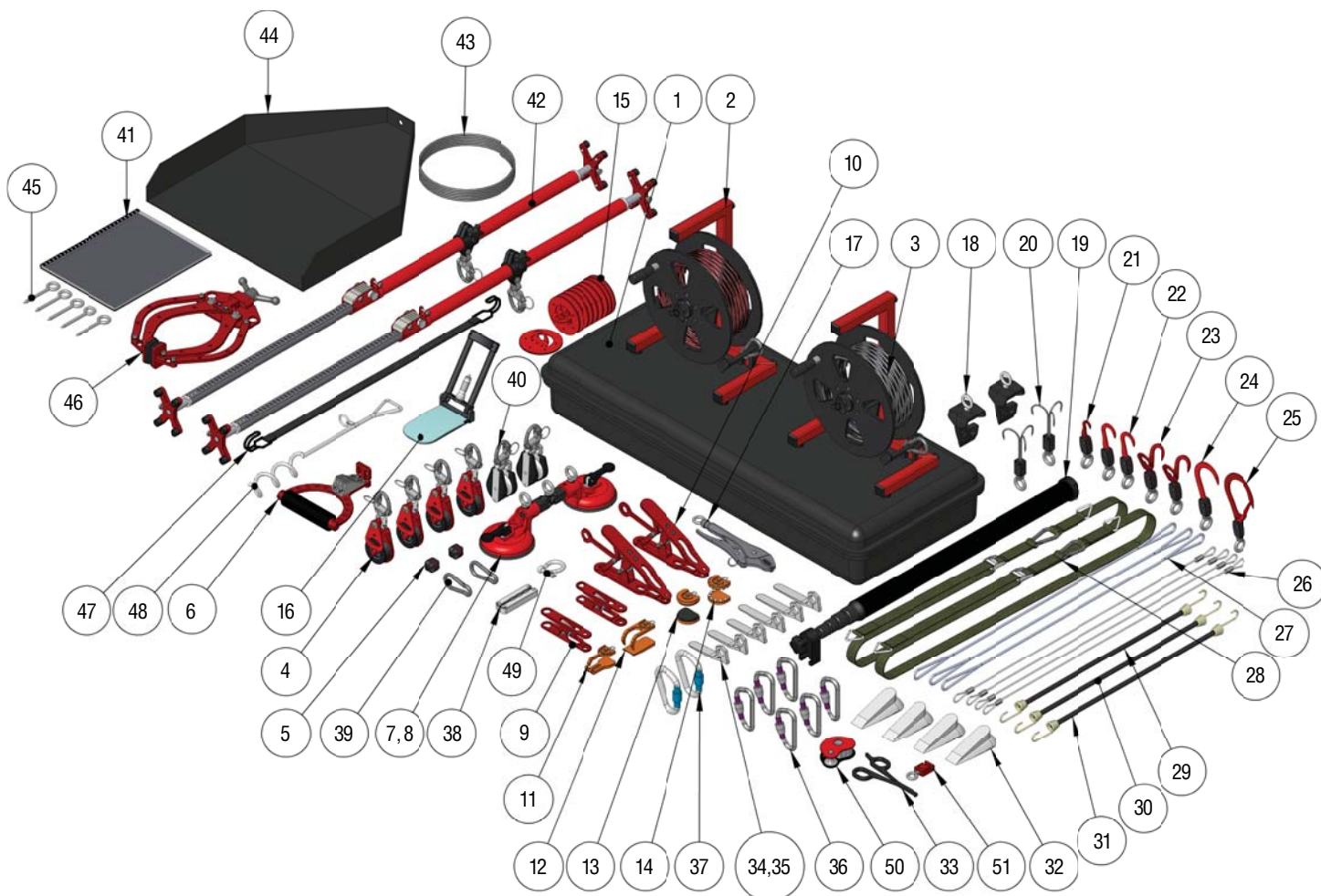
Engineered from high strength, laser cut, stainless steel, ICOR offers two different Hook and Line models:

ESSENTIAL - basic single-line
ULTIMATE - advanced two-line

Both kits come equipped with all the necessary tools for semi-remote handling of suspect devices including: hooks, clamps, and pulleys to attach and redirect items; high strength, low stretch, color-coded Kevlar® core line; and a multitude of wedges, pitons, karabiners, wires and ropes to act as anchors.



HOOK & LINE - COMPONENTS



*Note: ULTIMATE kit shown

ITEM	ESSENTIAL		ULTIMATE		ITEM	ESSENTIAL		ULTIMATE	
	QTY		QTY			QTY		QTY	
1 Pelican™ Storage Case <small>*Optional Backpack Storage available for Essential only</small>	1	1	18 Wedge-It™ Door Stop with Eyebolt	1	2 35 3 1/2" (90mm) Piton	2	3		
2 Basic Reel w/ 400' (120m) Main Line (Red)	1	1	19 10' (3m) Telescopic Pole with Hook Setter	1	1 36 Carabiner, Medium Screw Gate	4	6		
3 Basic Reel w/ 400' (120m) Main Line (Black)	-	1	20 Large Triple Hook	2	2 37 Carabiner, Large Screw Gate	2	2		
4 Swivel Release Pulley	2	4	21 1/2" (12.7mm) Hook	1	1 38 Leatherman® Multi-tool	1	1		
5 Splitter Ball	2	2	22 1" (25.4mm) Hook	2	2 39 Fireman Snap	2	2		
6 Rope Pull Handle	1	1	23 1" (25.4mm) Double Hook	2	2 40 Standard Snatch Block	2	2		
7 Single Suction Cup	2	2	24 2" (50.8mm) Hook	1	1 41 Hook and Line Manual	1	1		
8 Suction Cup Bridge (Swivel)	1	1	25 2" (50.8mm) Locking Hook	1	1 42 Doorway Anchor Pole	-	2		
9 Small Spring Clamp	1	2	26 Wire Sling 1/8" x 6.5' (3mm x 2m)	2	4 43 33' (10m) Auxiliary Line (No Eyes)	-	1		
10 Large Spring Clamp	1	2	27 Rope Sling w/ Eyes	2	3 44 EOD Sledge	-	1		
11 Clamp Tip Set, Needle Nose	1	1	28 Barrel Strap	1	2 45 4" (102mm) Screw Eye	-	5		
12 Clamp Tip Set, Wide Finger	1	1	29 24" (62 cm) Bungee Cord	1	1 46 Heavy Duty Clamp Anchor	-	1		
13 Clamp Tip Set, Flat Rubber-Padded	1	1	30 32" (81 cm) Bungee Cord	1	1 47 30" (762mm) Flat Bungee Strap	-	1		
14 Clamp Tip Set, Spike Grip	1	1	31 48" (122 cm) Bungee Cord	1	1 48 Spiral Ground Anchor	-	1		
15 Adhesive Wall Anchors	10	10	32 Rubber Door Stops	2	4 49 5/16" (8mm) D-Shackle	-	1		
16 Pocket Search Mirror	1	1	33 Forceps	1	1 50 Snatch Block, One Way	-	1		
17 Vice Grip w/ Eyebolt	1	1	34 2 3/4" (70mm) Piton	2	3 51 Line Lock	-	1		
								TOTAL # OF Components	66 97

Mini-CALIBER® SWAT ROBOT

MAN TRANSPORTABLE ROBOT

The lightweight, modular Mini-CALIBER® is a man transportable robot for SWAT and EOD operators. Developed for rapid tactical missions, the robot is simple to operate and quick to deploy, providing fast action for searching rooms, hallways, stair wells and confined spaces.

MISSION CONFIGURABLE

Basic Set-Up - The modular robot is configurable to your mission requirements. The basic Mini-CALIBER® provides simple surveillance capabilities with 2 wide angle IR cameras for low light conditions and two-way audio communications. Front and rear flippers allow for climbing stairs. An optional motorized, telescoping Pan-Tilt-Zoom (PTZ) camera expands the vertical viewing capability of the robot, extending up to 41" (104cm) as well as pivoting 0° - 190° facilitating under-vehicle searches.

Advanced Set-Up - The advanced configuration of the Mini-CALIBER® includes a manipulator arm on a rotating turret with a 10X zoom camera on the claw. The arm will lift objects up to 10lbs, deliver packages and open doors. The zoom camera will reach up to 64" (163cm), high enough to look into car windows and the horizontal reach of 50" (128cm) allows for under vehicle searches. Panning and tilting the zoom camera is controlled by moving the claw.

PAYLOADS

CBRNE detectors, sensors and thermal imaging cameras can be mounted onto the deck of the robot chassis, assisting first responders in identifying hazardous items. Contact your ICOR representative for complete details.

MOBILITY

The compact platform measures less than 16" (40cm) wide, allowing it to drive down aisles of planes, buses and other confined spaces. Powerful 24V drive motors achieve speeds up to 2.5 mph (4 km/h) and handle rough terrain, rocks and snow with ease. The polyurethane tracks and articulating front and rear flippers allow the robot to effortlessly climb stairs and other angles between 40° and 45°.

COMMAND & CONTROL UNIT (CCU)

Weighing only 4lbs (1.8 kg) the handheld CCU is truly portable and intuitive to use. The robot is controlled through a variable speed joystick and incorporates 2-way audio for hostage negotiation. Clear images are transmitted to the 5.8" (14.7cm) LCD daylight readable screen over a wireless RF system.

MULTIPLE MISSIONS

- Surveillance / Reconnaissance
- Inspection of planes, trains & buses
- Barricaded suspect / hostage negotiation
- Deliver / retrieve packages
- Open doors and move objects
- Under-vehicle inspection
- IEDD identification & disposal
- Intelligence gathering



Man portable Mini-CALIBER® and Command and Control Unit

*Images subject to change.

Mini-CALIBER® SPECIFICATIONS

Standard Features & Capacities

FEATURE	DESCRIPTION
Front Drive Camera	One IR Color CCD mounted in front of chassis
Rear Drive Camera	One IR Color CCD mounted in rear of chassis
Drive System	<ul style="list-style-type: none"> • Drives Speeds up to 2.5 mph (4 km/h) • Chain Drive motors with polyurethane tracks • 0° turning circle
Front/Rear Flippers	<ul style="list-style-type: none"> • Front and Rear articulating flippers for stair-climbing, and obstacle clearance • 360° Continuous Rotation • Preset stair-climbing position • Preset stow position
Robot Battery Pack	<ul style="list-style-type: none"> • Lithium Iron Phosphate (LFP) rechargeable batteries • Battery Chargers included • Up to 2 hours run time (mission dependent)
Command & Control Unit (CCU)	<ul style="list-style-type: none"> • Handheld, portable CCU • Variable Speed Joystick Control • 5.8" (14.7cm) LCD daylight readable anti-glare screen • Weight: 4lbs (1.8kg)
RF Communications	<ul style="list-style-type: none"> • Wireless RF analog for Video and Data • Approximately 1,000 ft operating distance
2 - Way Audio	<ul style="list-style-type: none"> • Digital 2-way (talk/listen) • PTT headset with adjustable volume • Omni-directional microphone on robot • Weather resistant speaker
Training Course	One day Robot Operation and Maintenance course. Either at ICOR or customers facility
WARRANTY	2-YEAR LIMITED WARRANTY
TECHNICAL SUPPORT	UNLIMITED TECHNICAL SUPPORT



Printed in Canada V2011.11.22

Optional Features

FEATURE	DESCRIPTION
PTZ Camera	<ul style="list-style-type: none"> • Pan-Tilt-Zoom Color Camera with 10x optical zoom • Shoulder range: 0° - 190° • Motorized telescoping pole, up to 41" (104cm) * Telescoping PTZ is not available with Claw Arm
Claw Arm	<ul style="list-style-type: none"> • 5 axis arm on rotating turret • Turret rotate: + / - 95° • Claw rotate: 360° Continuous Rotation • Max 64" (163 cm) Vertical Reach • Max 50" (128 cm) Horizontal Reach • 10 lb (4.5 kg) lift capacity • Color zoom camera with 10x optical zoom
Firing System	One independent, isolated firing circuit for RSP tools and/or breaching
Handheld Screen	Secondary handheld, portable, RF wireless LCD screen. Ideal for SWAT entry teams to view images from robot.

General Capacities

Width	15.8" (40 cm)
Height	9.5" (24 cm)
Length	<ul style="list-style-type: none"> • 24" (60 cm) Flippers Stowed • 33.8" (86cm) Flippers Deployed
Ground Clearance	1.5" (3.8 cm)
Weight	40 lbs (18 kg) - Basic Set-up 55 lbs (25 kg) - Advanced Set-up
Stair Climbing Angle	40° - 45° depending on stair structure (with front and rear flippers)
Weather Resistance	Environmentally sealed; chem.-bio wash down capability



STEALTH SEARCH MIRRORS

ICOR Technology's line of Stealth Search Mirrors are used by EOD technicians, tactical operators, law enforcement agencies, security guards and facility inspectors around the world. The durable, lightweight Stealth Search Mirrors are ideal for rapid searches under vehicles, around corners, and in ceilings. The ergonomic design, forearm supports and foam grip handles provide precise control and minimize operational fatigue. Easy to assemble, maintain, store, and use, ICOR's Stealth Search Mirrors is an easy choice

Stealth Model PSM Pocket Search Mirror

Our compact Pocket Search Mirror is ideal for tactical situations when you want a light-weight, easy to use and easy to deploy mirror. Perfect for close quarters situations where space is limited or for detailed inspection of automobiles

SPECIFICATIONS

5 in. x 2.75 in (12.5 cm x 7 cm) convex mirror with folding base

Bright LED light, 15hrs run time

Quick change standard LR 44 Alkaline Coin Cells (x4)

Telescopic, non-rotational three-section handle;
6 in - 18 in (15cm - 45cm)

Length: 6.5 in. (17cm)

Width: 3.5 in. (9cm)

Height: 1.2 in. (3cm)

Weight: 10.5 oz (300g)



Stealth Model M1000 Under Vehicle Search Mirror

The Stealth M1000 Search Mirror offers the best advantage for viewing the undercarriage of vehicles. A large 12 in. (30 cm) convex mirror along with the aid of a bright 4 LED light assembly, provides the operator an easy and quick view. This mirror was specifically chosen for its low-profile convex shape that provides a more realistic image, unlike the images normally associated with many convex mirrors. To enhance the specially designed convex mirror's image reflection, the mirror is tilted towards the operator, providing a direct, clear view of the image.

SPECIFICATIONS

12 in. Diameter (30 cm) convex mirror tilted for easy viewing

Bright LED light bar (x2), 15hrs run time

Quick change standard 9v (x2) batteries located outside the pole

Foam hand grip

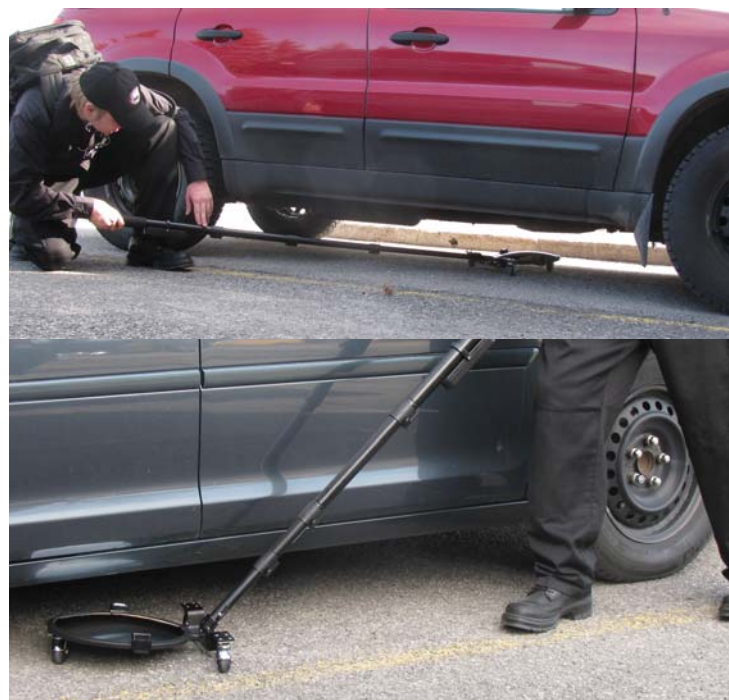
Deluxe swivel caster (x3)

Mil spec water tight push button switch

Telescopic, non-rotational, black anodized pole (4 sections)

Length 25" to 66" (63.5 cm to 167.5cm), non-rotational telescopic pole (5 pc.)

Width: 7.0 lbs (3.2 kg)



STEALTH SEARCH MIRRORS

Stealth Model M2000 5-section Search Mirror

With the added features of LED lights, this mirror pole can be extended up to 80 in. (203 cm) in length. The M2000 can be maneuvered to view areas that are far-removed or difficult to access, such as attics and false ceilings. The M2000 is perfectly balanced to look around corners using one hand while leaving the other hand free for personal protection.



SPECIFICATIONS

8 in. (20 cm) convex mirror with swivel base

Bright LED light bar, 15hrs run time

Quick change standard 9V (x2) batteries located outside the pole

Mil spec water tight push button switch

Foam grip, ergonomic forearm rest

Telescopic, non-rotational, black anodized pole (5 sections)

Length: 30 in. to 80 in. (76 cm to 203 cm)

Weight: 4.5 lbs (2.0 kg)

Stealth Model M3000 3-section Search Mirror

Our easy-to-use M3000 mirror is compact and lightweight; consisting of 3-section, telescopic, non-rotational, aluminium poles and extends to 40 in (101 cm). With the attached Halogen light, the M3000 is ideal for general use and can be carried anywhere.

SPECIFICATIONS

8 in. (20 cm) convex mirror with swivel base

10 hr halogen light with replaceable "C" batteries

Foam grip, ergonomic forearm rest

Telescopic, non-rotational, black anodized pole (3 sections)

Length: 20 in. to 40 in. (53 cm to 101 cm)

Weight: 2.5 lbs (1.2 kg)



GSA Contract Holder #GS-07F-0430V

Printed in Canada V2010.03.30

STEALTH SEARCH POLE CAM

The Stealth Search Pole Cam from ICOR Technology Inc. is a multi-functional, portable, video search system ideal for under-vehicle searches at perimeter security points and tactical missions. It's compact design stows to 26" (66cm) and has a maximum extension of 79" (200cm); with an extension of 34" (86cm) at the elbow. The 5" (12.7cm) LCD screen is suitable for bright daylight operations and the integrated IR Camera allows for clear visibility in low-light conditions. The elbowed pole assembly is mounted on quick detachable wheels for ease of use while searching under vehicles which is complimented with the ergonomic forearm brace and foam handle.

The quick detachable wheels also make it easy to convert the Stealth Search Pole Cam into a tactical search camera to increase situational awareness for tactical teams. Suitable for building searches, looking around corners and inspecting ceilings, the tactical camera is the first step to keeping operators safe from danger. (P/N: SSPC)

Monitor Specifications

Size (WxHxD): 5.9" x 4.9" x 1.3" (15cm x 12.5cm x 3.5cm)

Weight: 1.6lbs (0.725kg)

Display Size: 5" (12.7cm) Diagonal; 320 x 239; NTSC

Batteries: 4 x Rechargeable Lithium-Ion w/ Chargers

Run Time: 8+ hours; 5.5 hours Charge time

Mounting Options: Quick detachable mounting system to be used either on pole or around neck

Pole Specifications

Extended Length: 79" (200cm)

Collapsed Length: 48" (122cm)

Weight: 4.6lbs (2.08kg)

Mounting Options: Quick detachable wheels

Construction: 5 section, Telescoping, Non-rotational, Anodized Aluminum Pole with elbow for under-vehicle inspection

Case Specifications

Size (LxWxH): 48" x 16.5" x 6" (122cm x 42cm x 15.25 cm)

Weight: 26.4lbs (12kg)

Construction: Pelican® Hardshell Transport Case



Elbow pole assembly for use as undervehicle search camera



Quick detachable wheels and monitor for easy conversion from undervehicle search camera to Search Pole Cam

* Image subject to change

Printed in Canada V2011.04.01

CABLE REELS

Increase safety and reduce response time with ICOR Technology's speciality Cable Reels. The Firing Cable Reel and Communication Cable Reels are designed to help organize and manage long lengths of firing cable and coaxial cables, respectively. ICOR's cable reels feature sturdy all welded frame construction, ergonomic carrying handles and a slim design profile for easy storage. If one of our standard reel configurations doesn't meet your needs, contact us and we'll be pleased to design a cable reel to your specifications.

FIRING CABLE REELS

Firing Cable Reels are perfect for organizing and managing long lengths of firing cable. Firing Cable Reels are made of precision material for reliability and durability. They are available in 50m (165'), 100m (330') and 300m (985m) lengths.

Firing Cable Reel Features:

Sturdy all welded frame construction.

Lock function for securing reel when not in use.

Two stereo jacks and two banana jacks (binding post terminals) for quick secured connection.

FR50, FR100, FR300 Specifications (respectively)

Cable Length	50m (165'), 100m (330'), 300m (985')
Reel Size	FR50 - 40cm x 40cm x 15cm (16" x 16" x 6") FR100 - 40cm x 40cm x 23cm (16" x 16" x 9") FR300 - 40cm x 40cm x 30cm (16" x 16" x 12")
Reel Finish	Black Powder-coated paint
Reel Construction	Steel and engineered plastic
Cable Material	20 gauge stranded, twisted pair with black and brown PVC jacket



COMMUNICATION CABLE REELS

Communication Cable Reels are specifically designed for the law enforcement, bomb disposal and tactical community. Used for connecting command posts together or linking multiple audio / visual sources, they provide a better way to organize, store and transport coaxial cables used in law enforcement response vehicles. With 4 coaxial inputs and one binding post terminal for audio cables, mounted onto a slip ring assembly, the cable reels provide flexibility and adaptability for the most demanding mission. The Communication Cable Reels are ergonomically designed for easy portability, making setting up and tearing down your communication equipment faster and easier.

Communication Cable Reel Features:

Sturdy all welded frame construction.

4 coaxial terminals and one binding post terminals (banana jacks) for audio feed

Adjustable drag brake for securing reel when not in use.

CCR - 150 Specifications

Cable Length	150m (500')
Reel Size	48cm x 43cm x 36cm (18.75" x 17" x 14")
Reel Finish	Black Powder-coated paint
Reel Construction	Steel and engineered plastic

SEARCH TOOLKIT

Item	Qty	Description	Item	Qty	Description
1	1	Ryobi Set Drill/light	31	1	Chisel with hand guard
2	1	Illuminated Micro Mirror	32	1	Automatic Center Punch
3	1	Telescopic Mirror (2" Dim)	33	1	Bent Nose Pliers, large
4	1	Telescopic Mirror (5" Dim)	34	1	Self-adjusting pliers
5	1	Magnifying Glasses (3" Dim)	35	1	Linesman Pliers
6	1	Head Lamp	36	1	Tin Snips
7	1	Mag Light, 2AA	37	1	Vise Grip
8	1	Tape Measure	38	1	"C" Clamp 2.0"
9	1	Safety Glasses	39	1	Siesers (St. Steel)
10	1	Gloves	40	1	Siesers, Plastic (Set of 2)
11	1	Nylon Rope w/handle (200 feet)	41	1	Scissors, Heavy Duty
12	1	Rope with Cavlar core (30 feet)	42	1	Utility Knife
13	1	Cable Tie (Pack of 15)	43	1	Tweezer, plastic
14	1	3M Electrical Tape, Heavy Duty	44	1	Tweezer Set, St. Steel, 5 pcs
15	1	Basic Soldering Iron with solder	45	1	Hex Drive Set-Imperial
16	1	Multi Meter, Digital	46	1	Hex Drive Set-Metric
17	1	Plastic Probe (Set of 2)	47	1	Fishing Hooks (set of 5)
18	1	Key Hole Saw	48	1	Wedge-It Multi-Purpose Door Stop
19	1	Drywall Saw	49	1	Adjustable Wrench, 8"
20	1	Junior Hacksaw	50	1	Masonry Drill Bit
21	1	Hacksaw	51	1	3/8" Wood Bit
22	1	Wrecking Bar 24"	52	1	7/8" Flat Wood Bit
23	1	Claw Hammer	53	1	3/16" HSS Drill Bit (set of 2)
24	1	Socket Set 40pcs	54	1	1/4" HSS Drill Bit (set of 2)
25	1	Phillips Screw Driver 6"	55	1	3/8" HSS Drill Bit
26	1	Flat Screw Driver 8"	56	1	1/2" HSS Drill bit
27	1	Jeweler Screw Driver Set	57	1	Storage Case with foam insert
28	1	Screw Driver, multi bit			
29	1	Bolt Cutter			
30	1	Wood Chisel			

Printed in Canada V.2010.03.30